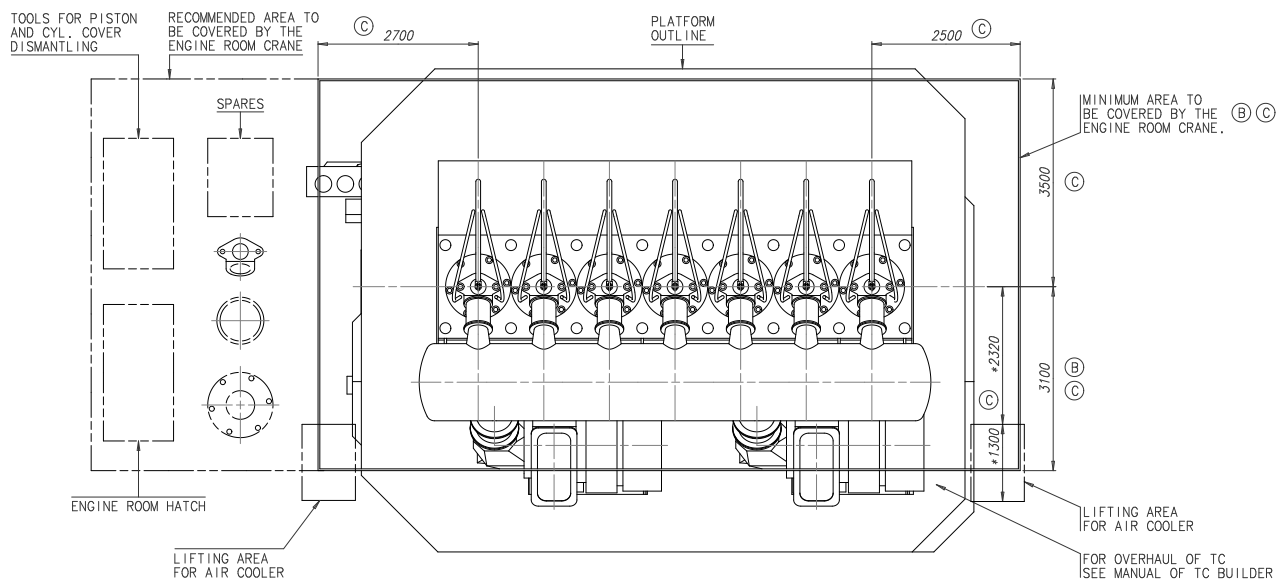
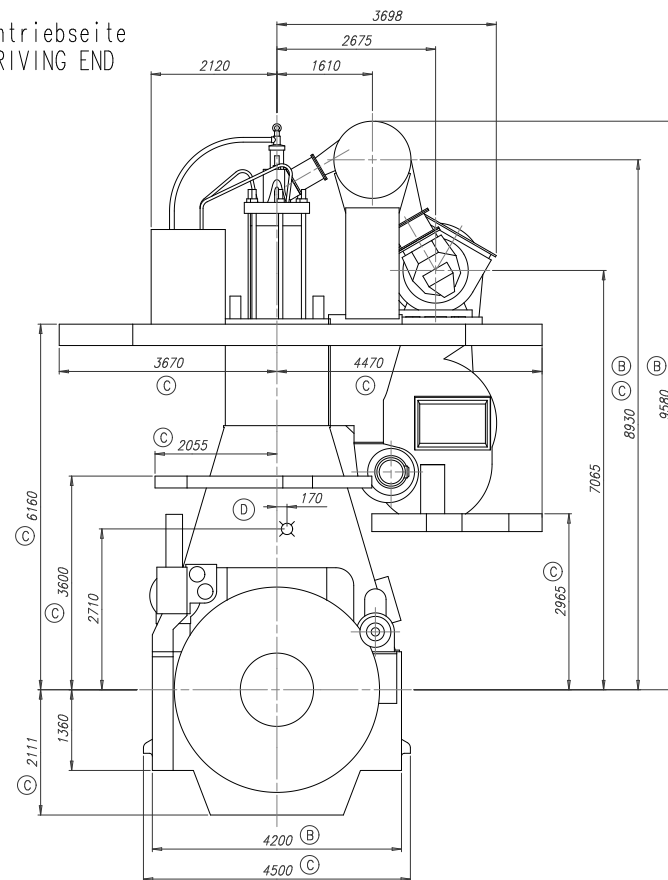

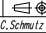


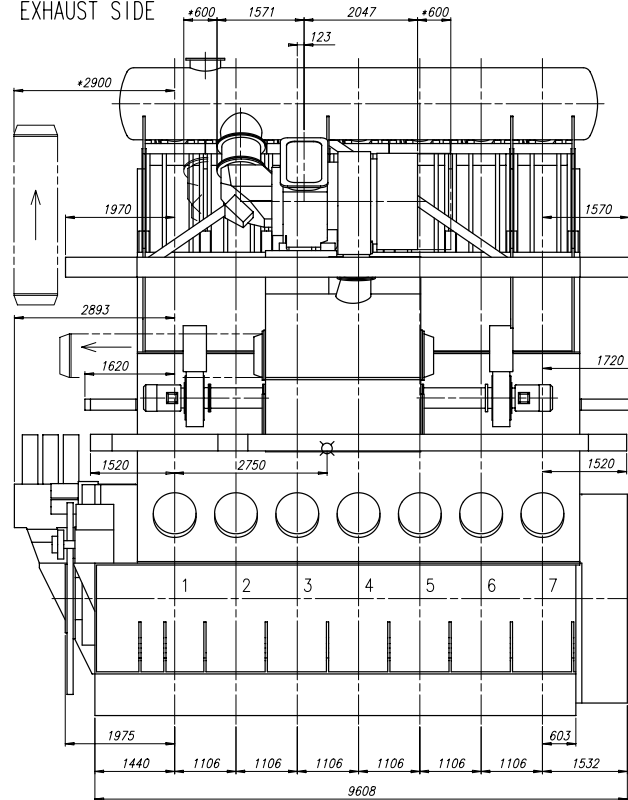
Abgasseite
EXHAUST SIDE



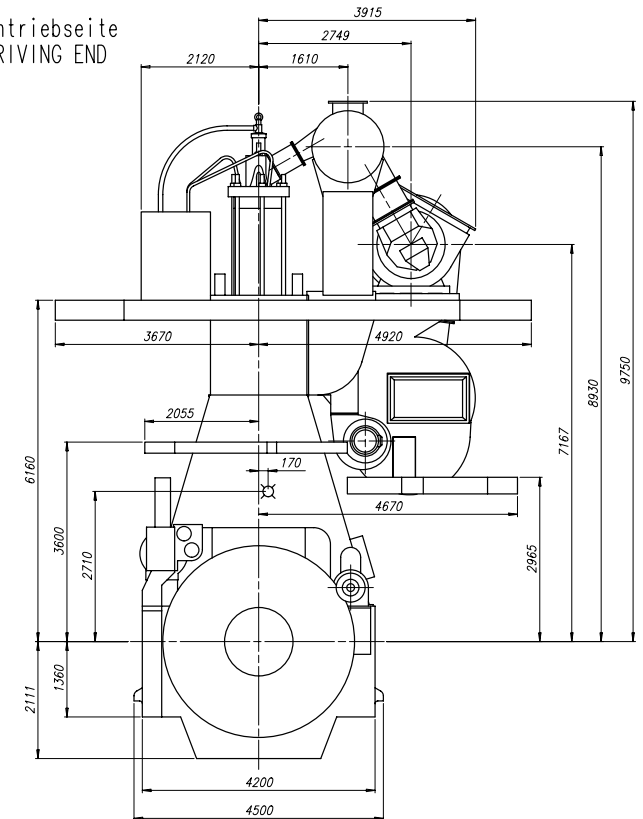
<div><div>D</div><div>ca. Schwerpunkt APPROX. CENTRE OF GRAVITY</div></div>												
Gewicht ohne Wasser und Öl= 435 t WEIGHT WITHOUT WATER AND OIL												
* Platz fuer Demontage SPACE FOR REMOVAL												
TURBOCHARGER A175-L												
1	001	PAAD082991		DISMANTLING DIMENSIONS			DAAD027102				0,00	
QTY	STD	Material ID		Material Name			Dimension/Doc.Dimension		Standard or Drawing		Basic Material Material Standard	
											O-Code XXXXXX ISO JIS	
											Main Drw. H	
From space for												
Matr.	A		EAAD083762		18.04.2012		B		EAAD084217		23.10.2012	
	C		EAAD084341		11.11.2012		D		EAAD085447		25.09.2013	
	Number	Drawn date		Number	Drawn date		Number	Drawn date		Number	Drawn date	
				Product W7X62		ENGINE OUTLINE VIEW A175-L Motoransichten A175-L						
				Basic Material		Size A1 Page 1/1		Material ID		Net Weight 0,001		
										PAAD055123		
Unit	mm	kg	IDE		Scale 1:45		Design Group		Drawing ID		Rev.	
Model	18.07.2011		csc001		C.TurboLuz		0812		DAAD019095		D	
Chkd	20.02.2012		pne001		Neracher							
Appd	20.02.2012		bfr005		Frei							

Download
"DXF file"

Abgasseite
EXHAUST SIDE



Antriebsseite
DRIVING END

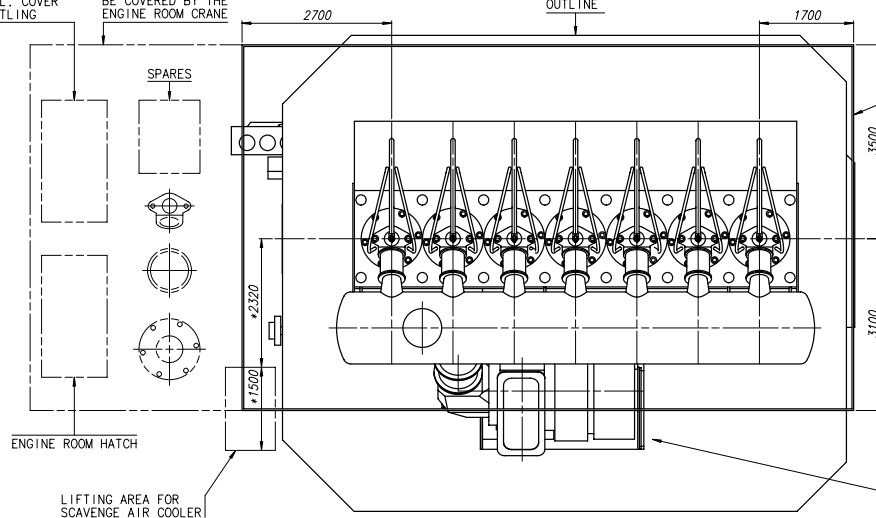


TOOLS FOR PISTON AND CYL. COVER DISMANTLING

RECOMMENDED AREA TO
BE COVERED BY THE
ENGINE ROOM CRANE

PLATFORM OUTLINE

MINIMUM AREA TO
BE COVERED BY THE
ENGINE ROOM CRANE.




FOR OVERHAUL OF TC
SEE MANUAL OF TC BUILDER

ca. Schwerpunkt
APPROX. CENTRE OF GRAVITY

Gewicht ohne Wasser und Oel= 435 t
WEIGHT WITHOUT WATER AND OIL

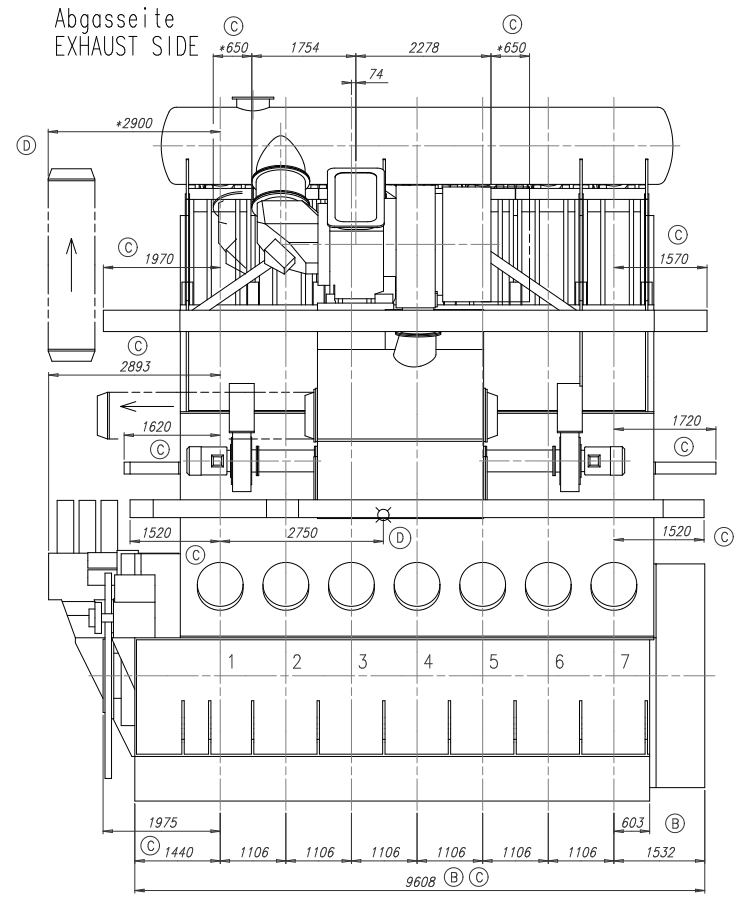
* Platz fuer Demontage
SPACE FOR REMOVAL

TURBOCHARGER A180-L

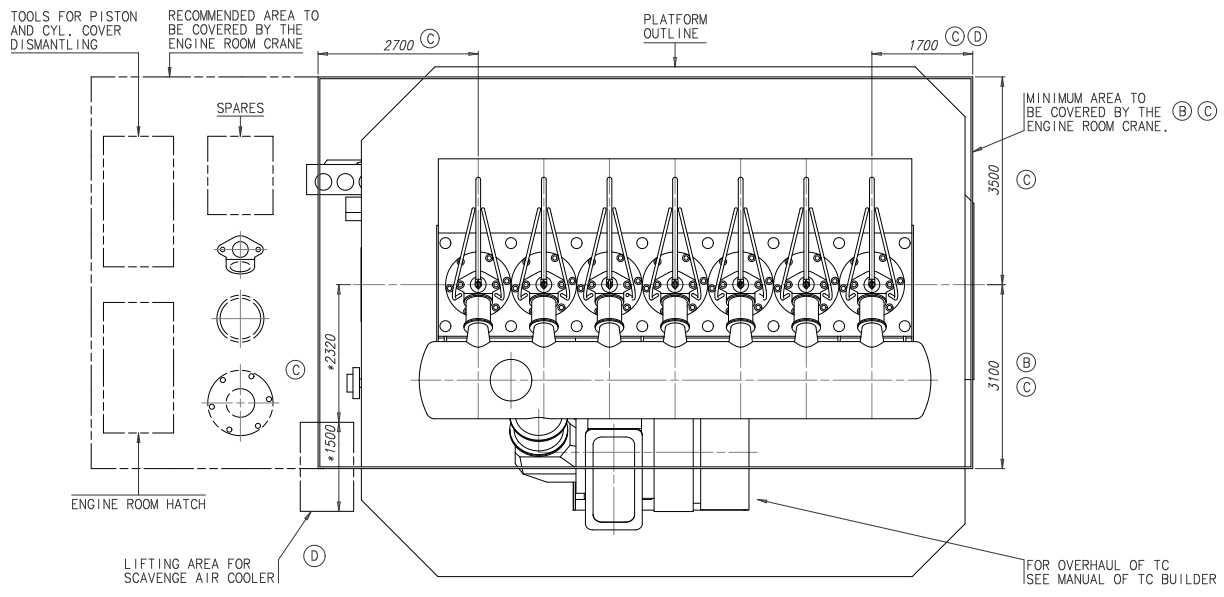
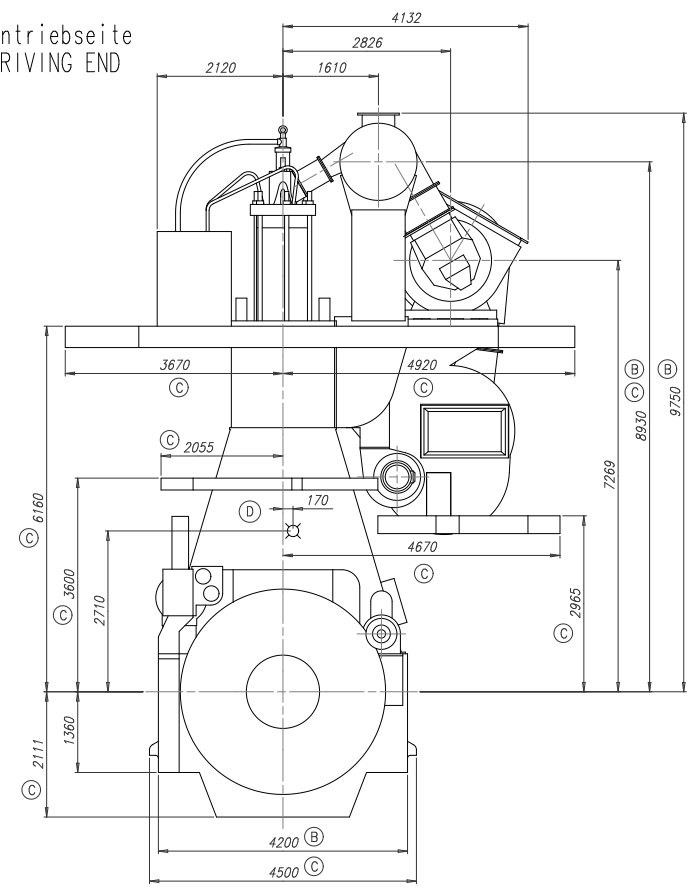
1	001	PAAD082991	DISMANTLING DIMENSIONS			DAAD027102	0.001	
QTY	REQ NO	Material ID	Material Name	Dimension/Qty/Dimension	Standard or Drawing	Basic Material Material Standard	Weight Unit	Weight
From Stock						U-Code Standard	xxxxxx ISO JIS	Min Part H
Mat. ID	Number	Draw date	Number	Draw date	Number	Draw date	Number	Draw date
		Product W7X62		ENGINE OUTLINE VIEW A180-L Motoransichten A180-L				
								
Units	mm	kg	Basic Material				Net Weight 0.001	
Order	01.10.2014	082001	Scale 1:45		Size	Page	Material ID	PAAD172566
Check	06.10.2014	rsd082 Saz	Design Group		0812	DA1	1/1	
App	06.10.2014	bfr008 Frai	0812		Drawing ID	PAAD054688		Rev.

Download
"DXF file"

Abgasseite
EXHAUST SIDE



Antriebsseite
DRIVING END



ca. Schwerpunkt
APPROX. CENTRE OF GRAVITY

Gewicht ohne Wasser und Öl = 435 t
WEIGHT WITHOUT WATER AND OIL

Platz fuer Demontage
* SPACE FOR REMOVAL

TURBOCHARGER A185-L

1	001	PAAD082991	DISMANTLING DIMENSIONS		DAAD027102		0,001				
QTY	Std	Material ID	Material Name	Dimension/Qty	Standard or Drawing	Basic Material Material Standard	Weight GP./Net				
						O-Code XXXXX	Netr. Draw.				
						Standard ISO JIS	H				
1	EAAD083762	18.04.2012	B	EAAD084217	23.10.2012	C	EAAD084341	11.12.2012	D	EAAD085447	25.09.2014
	Number	Draw date	Number	Draw date	Number	Draw date	Number	Draw date	Number	Draw date	

Units mm kg IDE Scale 1:45 Size A1 Page 1/1 Material ID PAAD074594

MODE 01.02.2012 csc001 C. Schmutz Design Group 0812 Drawing ID DAAD024731 Rev. D

SURFACE PROTECTION SEE GROUP 0344
TOLERANCING PRINCIPLE ISO 8015
GENERAL TOLERANCES ACCORDING TO ISO 2768-mK

Product W7X62
ENGINE OUTLINE VIEW
Motoransichten
A185-L

Net Weight 0,001

Download
"DXF file"

Kolben mit Stange komplett
und Stopfbuechse
PISTON WITH ROD COMPLETE
AND GLAND BOX

Zylindereinsatz mit
Wasserleitmantel
CYLINDER LINER WITH
WATER GUIDE JACKET

Zylinderdeckel mit Auslassventil
komplett und Wasserleitmantel
CYLINDER COVER WITH EXHAUST
VALVE COMPLETE AND WATER
GUIDE JACKET

Auslassventil komplett
EXHAUST VALVE COMPLETE

A Gewicht ohne Hebwerkzeug:
WEIGHT WITHOUT LIFTING TOOL:

E 2015 kg

A Gewicht ohne Hebwerkzeug:
WEIGHT WITHOUT LIFTING TOOL:

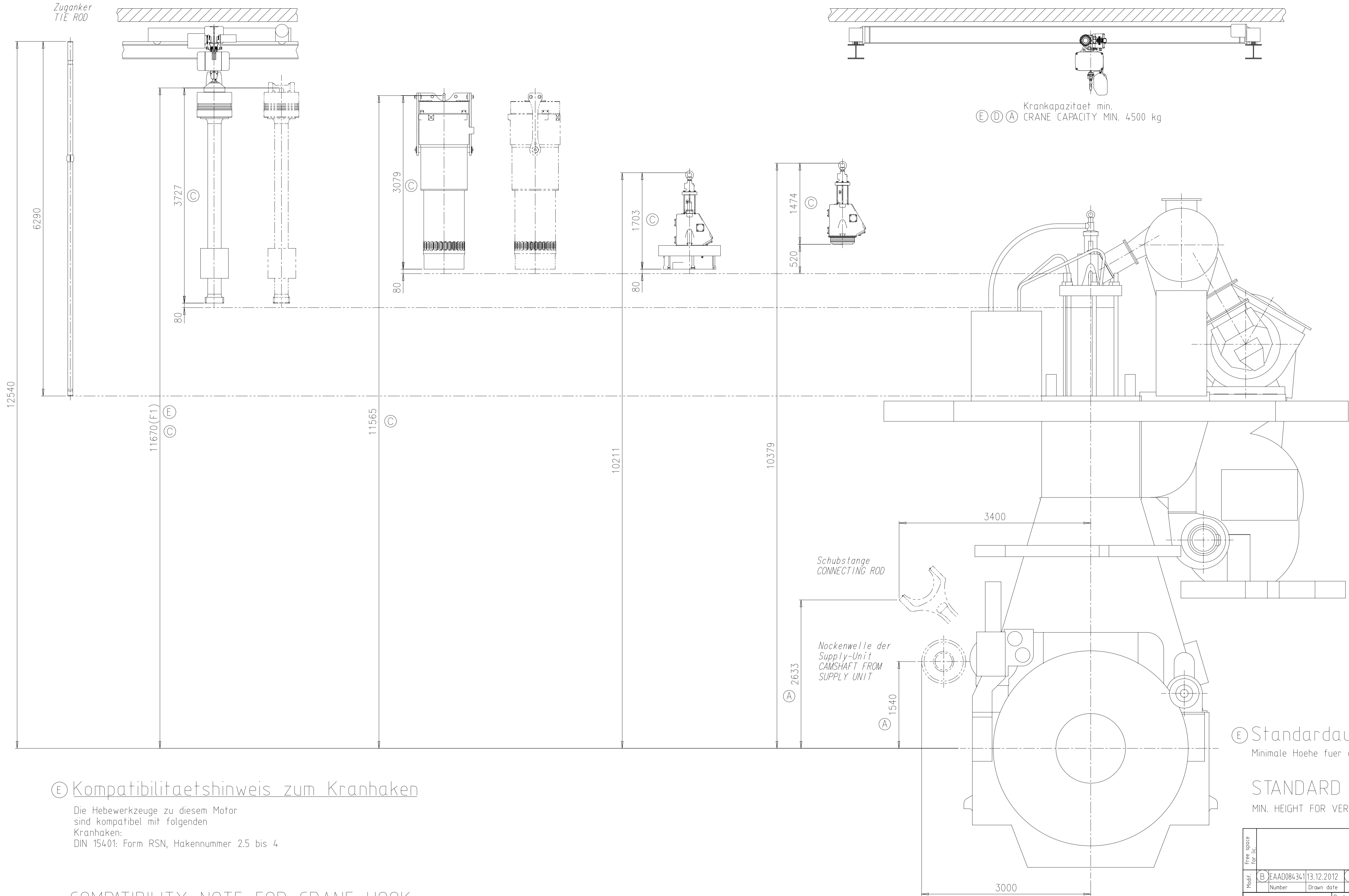
E 3800 kg

A Gewicht ohne Hebwerkzeug:
WEIGHT WITHOUT LIFTING TOOL:

E 2220 kg

A Gewicht ohne Hebwerkzeug:
WEIGHT WITHOUT LIFTING TOOL:

E 675 kg



Ⓔ Kompatibilitäetshinweis zum Kranhaken

Die Hebwerkzeuge zu diesem Motor
sind kompatibel mit folgenden
Kranhaken:
DIN 15401: Form RSN, Hakennummer 2,5 bis 4

COMPATIBILITY NOTE FOR CRANE HOOK

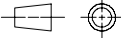
THE LIFTING TOOLS FOR THIS ENGINE
ARE COMPATIBLE WITH FOLLOWING
CRANE HOOK:
DIN 15401: SHAPE RSN, HOOK NUMBER 2.5 TO 4

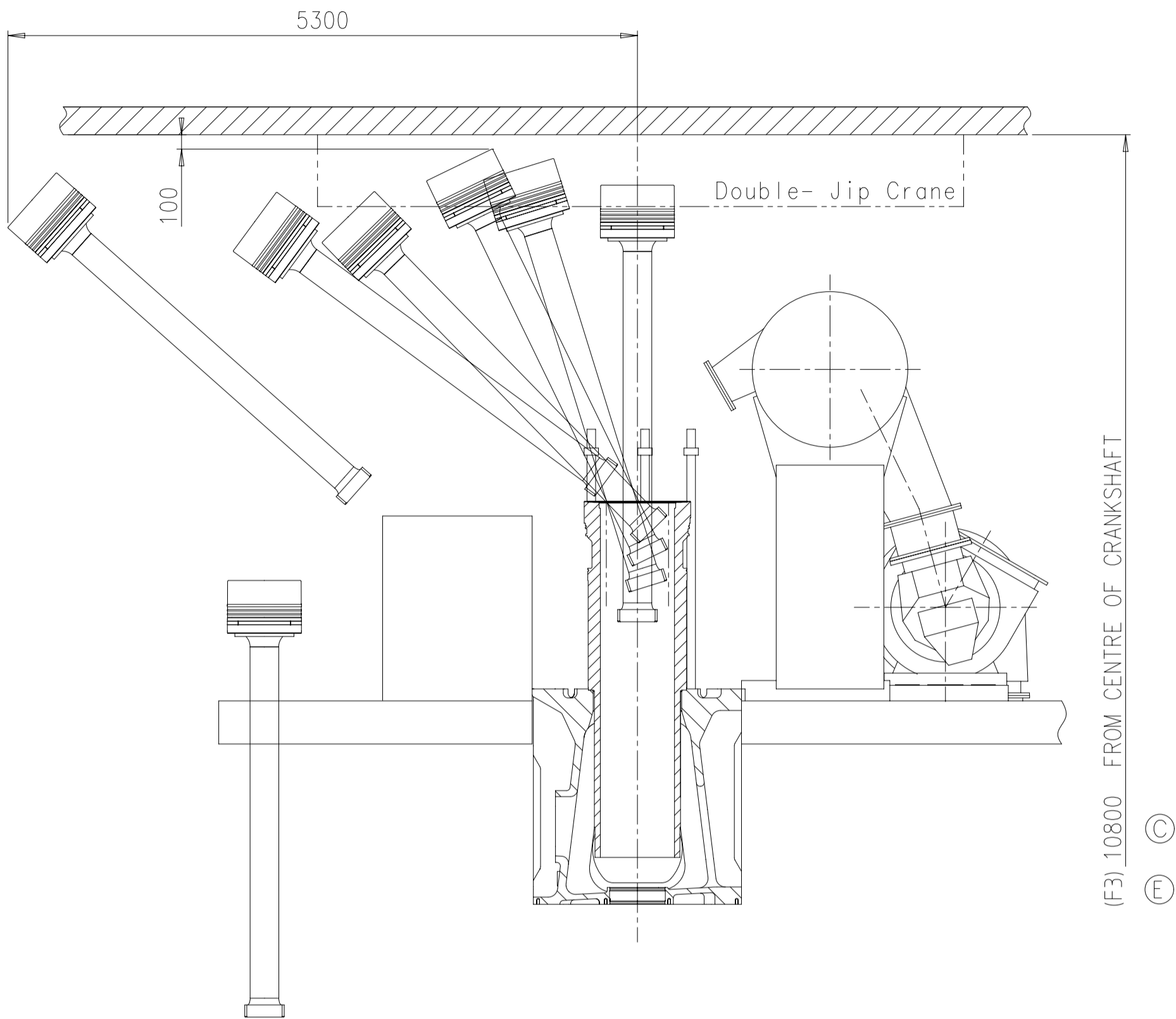
Ⓔ Standardausbau

Minimale Hoehe fuer den vertikalen Ausbau: F1

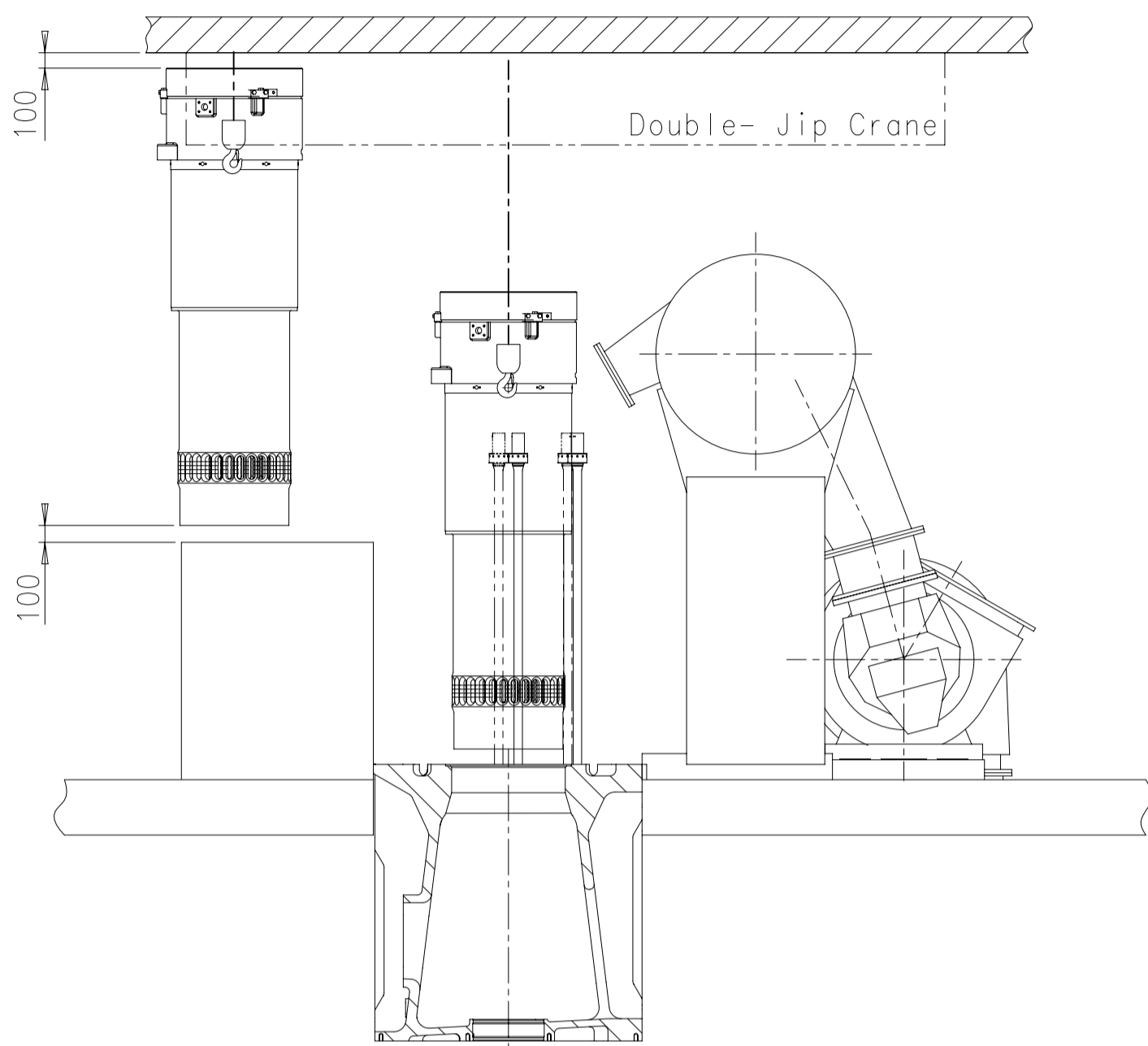
STANDARD DISMANTLING

MIN. HEIGHT FOR VERTICAL REMOVAL: F1

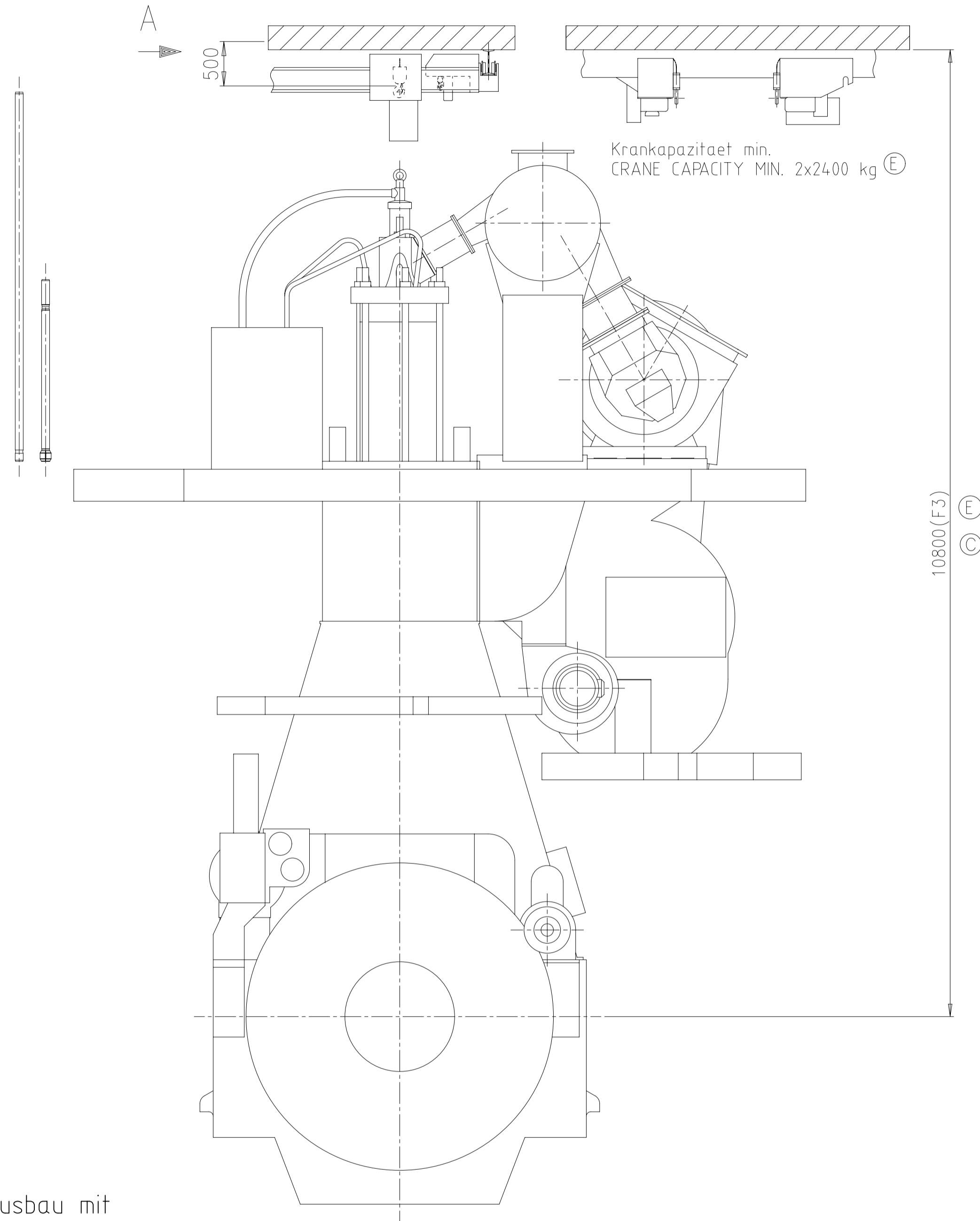
Free space for file										D-Code XXXXXX Standard ISO; JIS		Main Dwg.	
Modif.	B	EAAD084341	13.12.2012	C	EAAD084682	09.07.2013	D	EAAD085438	24.09.2014	E	EAAD091495	22.04.2020	
	Number	Number	Drawn date	Number	Number	Drawn date	Number	Number	Drawn date	Number	Number	Drawn date	
<div>WIN GD</div> <div>Winterthur Gas & Diesel</div>				Product W-X62			DISMANTLING DIMENSIONS Ausbaumasse						
Units		mm	kg	NX				Basic Material				Net Weight 0,001	
Made	17.04.2012		csc001		C.Schmutz		Scale 1:35		Size	A1	Page 1/2	Material ID	PAAD082991
Chkd	02.05.2012		pne001		Neracher		Design Group		Drawing ID	DAAD027102	Rev.	E	
Appd	03.05.2012		bfr005		Frei		0812						



1. Disassembly of exhaust valve cage, cylinder cover and upper water guide jacket
2. Disassemble three cylinder cover bolts on fuel side
3. Pull out the piston with standard piston disassembly tool, then attach tool for further lifting
4. Proceed with tilted piston removal
5. place piston on support for overhaul



6. Put the pins for liner lifting into designated holes
7. Attach crane hooks for lifting
8. Pull out the liner until over top of rail unit
9. Move liner over rail unit and put in designated place for overhaul



Ⓐ Kompatibilitaetshinweis zum Kranhaken für Double-Jib Kran

Die Hebewerkzeuge zu diesem Motor sind kompatibel mit folgenden Kranhaken:
DIN 15401: Form RSN, Hakennummer 08

COMPATIBILITY NOTE FOR CRANE HOOK FOR DOUBLE-JINB CRANE

THE LIFTING TOOLS FOR THIS ENGINE ARE COMPATIBLE WITH FOLLOWING CRANE HOOK:
DIN 15401: SHAPE RSN, HOOK NUMBER 08

Ⓔ Voraussetzungen fuer diese Ausbauart

- zweiteilige Zylinderdeckel-Dehnbolzen auf der Brennstoffseite
- zweiteilige Zuganker im Reparaturfall
- Spezialkran (DOUBLE-JIB)
- spezielle Hebewerkzeuge fuer den Zylindereinsatz und den Kolben

REQUIREMENTS FOR THIS DISMANTLING METHOD

- TWO-PIECE ELASTIC STUDS FOR CYLINDER COVER ON FUEL SIDE
- TWO-PART TIE ROD IN CASE OF REPAIR
- SPECIAL CRANE (DOUBLE-JIB)
- SPECIAL LIFTING TOOLS FOR CYLINDER LINER AND PISTON

Ⓔ Standardausbau mit Double-Jib Kran

Minimale Hoehe fuer den gekippten Ausbau mit dem Double-Jib Kran: F3
Die Distanz von der obersten Hakenposition bis zur Decke varriert je nach der ausgewaehlten Kranausfuehrung

Für gekippten Ausbau mit Double-Jib E/R Kran von Fuchs Foerdertechnik AG

STANDARD DISMANTLING WITH DOUBLE-JIB CRANE

MIN. HEIGHT FOR TILTED WITH DOUBLE-JIB CRANE: F3
DISTANCE BETWEEN TOP POSITION OF HOOK AND ENGINE ROOM CEILING VARIES DEPENDING ON CRANE TYPE.

FOR TILTED REMOVAL WITH DOUBLE JIB E/R CRANE BY FUCHS FOERDERTECHNIK AG

SURFACE PROTECTION SEE GROUP 0344		Modt.	B	EAAD084341	13.12.2012	C	EAAD084682	09.07.2013	D	EAAD085438	24.09.2014	E	EAAD091495	22.04.2020
TOLERANCING PRINCIPLE ISO8015		Chkd	02.05.2012		pne001 Neracher		Design Group		0812		DRAFTING ID		DAAD027102	
GENERAL TOLERANCES ACCORDING TO ISO2768-mK		Appd	03.05.2012		bfr005 Frei								Rev. E	

WinGD-7X62_Engine-outline-views

TRACK CHANGES

DATE	SUBJECT	DESCRIPTION
2018-02-26	DRAWING SET	First web upload
2020-07-17	DAAD027102	Revised Dismantling Dimensions drawing has been updated.

DISCLAIMER

© Copyright by Winterthur Gas & Diesel Ltd.

All rights reserved. No part of this document may be reproduced or copied in any form or by any means (electronic, mechanical, graphic, photocopying, recording, taping or other information retrieval systems) without the prior written permission of the copyright owner.

THIS PUBLICATION IS DESIGNED TO PROVIDE AN ACCURATE AND AUTHORITATIVE INFORMATION WITH REGARD TO THE SUBJECT-MATTER COVERED AS WAS AVAILABLE AT THE TIME OF PRINTING. HOWEVER, THE PUBLICATION DEALS WITH COMPLICATED TECHNICAL MATTERS SUITED ONLY FOR SPECIALISTS IN THE AREA, AND THE DESIGN OF THE SUBJECT-PRODUCTS IS SUBJECT TO REGULAR IMPROVEMENTS, MODIFICATIONS AND CHANGES. CONSEQUENTLY, THE PUBLISHER AND COPYRIGHT OWNER OF THIS PUBLICATION CAN NOT ACCEPT ANY RESPONSIBILITY OR LIABILITY FOR ANY EVENTUAL ERRORS OR OMISSIONS IN THIS BOOKLET OR FOR DISCREPANCIES ARISING FROM THE FEATURES OF ANY ACTUAL ITEM IN THE RESPECTIVE PRODUCT BEING DIFFERENT FROM THOSE SHOWN IN THIS PUBLICATION. THE PUBLISHER AND COPYRIGHT OWNER SHALL UNDER NO CIRCUMSTANCES BE HELD LIABLE FOR ANY FINANCIAL CONSEQUENTIAL DAMAGES OR OTHER LOSS, OR ANY OTHER DAMAGE OR INJURY, SUFFERED BY ANY PARTY MAKING USE OF THIS PUBLICATION OR THE INFORMATION CONTAINED HEREIN.