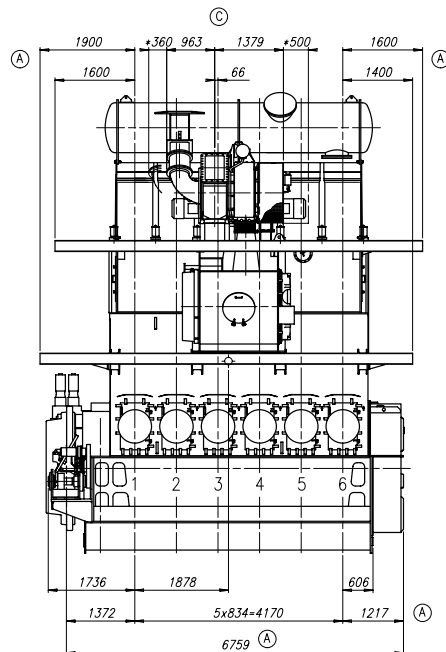
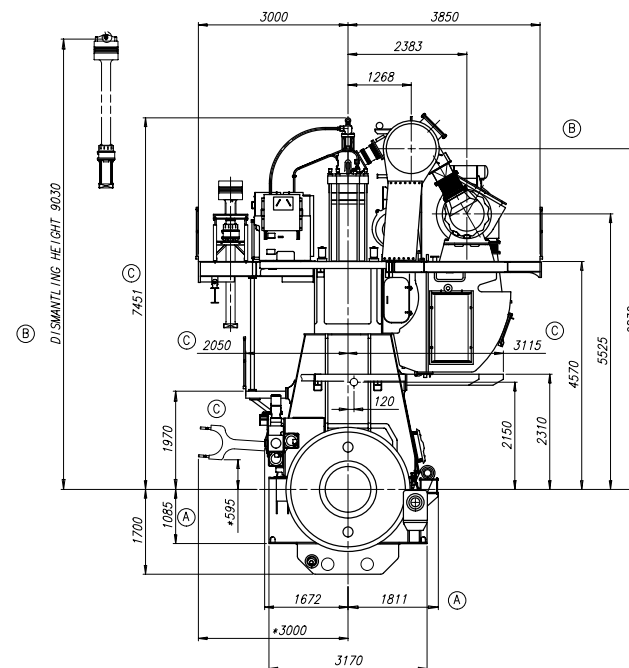


Download  
"DXF file"

Abgasseite  
EXHAUST SIDE

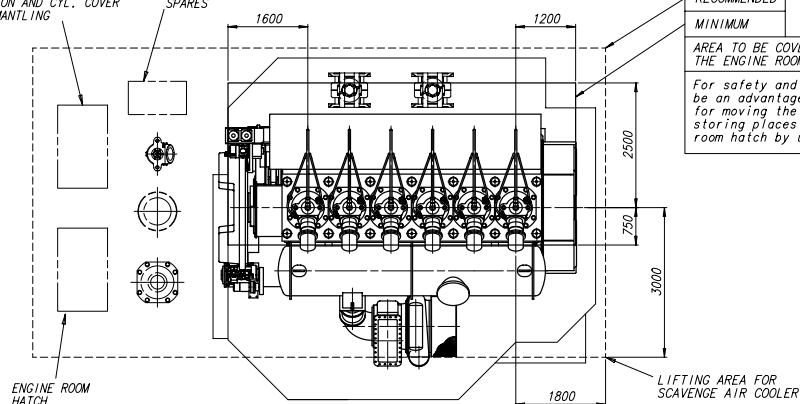


Antriebsseite  
DRIVING END



TOOLS FOR  
PISTON AND CYL. COVER  
DISMANTLING

SPARES



RECOMMENDED  
MINIMUM

AREA TO BE COVERED BY  
THE ENGINE ROOM CRANE

For safety and timesaving reasons it will  
be an advantage to increase the minimum area  
for moving the heavy components between the  
storing places and the engine or to the engine  
room hatch by using the engine room crane.

TURBOCHARGER 1xTPL 73

ca. Schwerpunkt  
APPROX. CENTRE OF GRAVITY

\* Platz fuer Demontage  
SPACE FOR REMOVAL

Gewicht ohne Wasser und Oel= 205 t  
WEIGHT WITHOUT WATER AND OIL

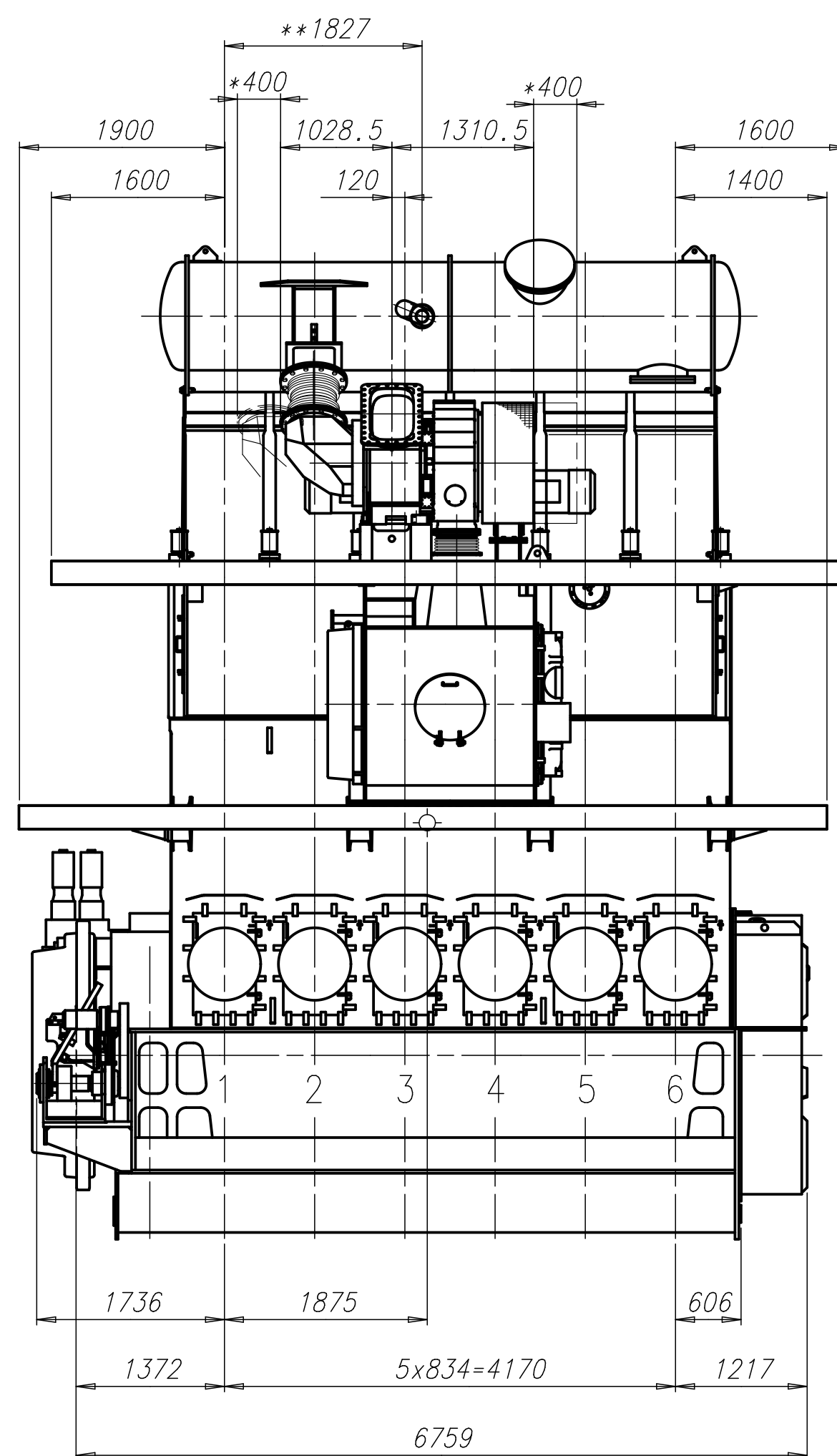
PLEASE NOTE:

MAIN STAIRS WITH MORE THAN 4 STEPS ONLY  
IN LONGITUDINAL DIRECTION OF THE ENGINE.

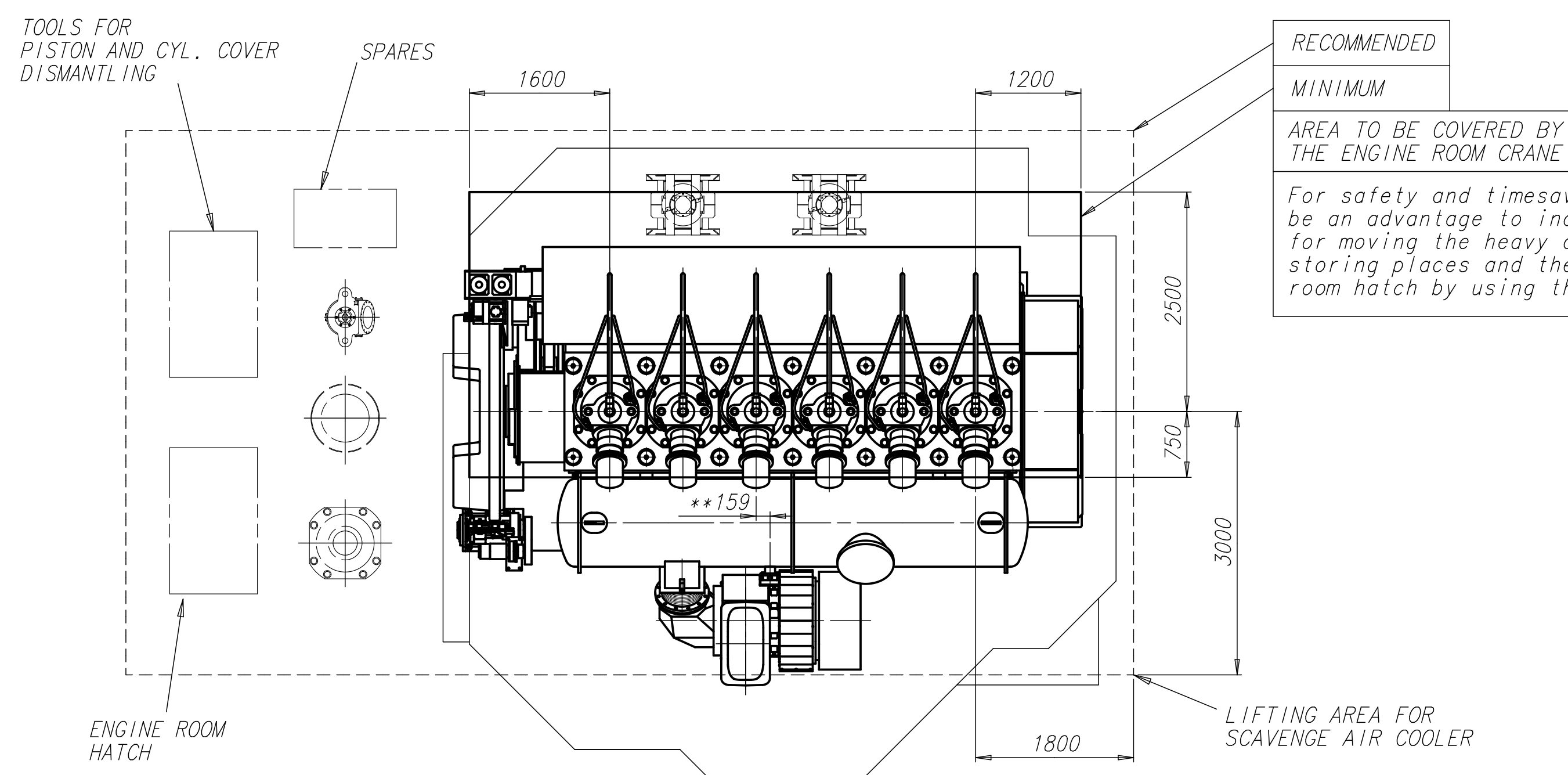
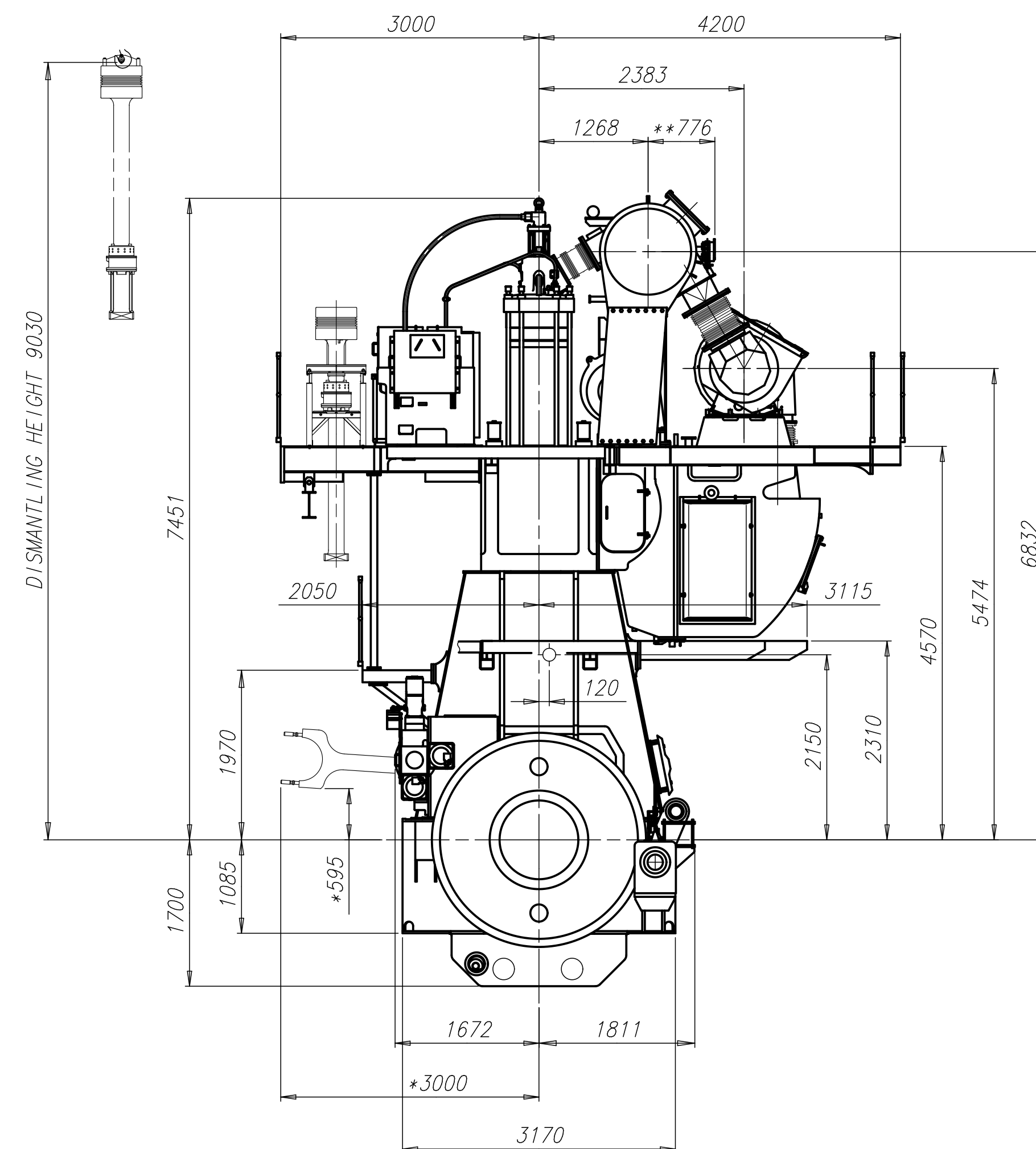
WARTSILA		ENGINE OUTLINE VIEW		Motoransichten	
Units	mm x g	IDE	Scale	1:50	Size
Sheet	31_10_2008	ap/1001 Piuess	Design Group	0812	Drawings to
Check	05_11_2008	ame012 Mehmenn	0812	107,406.695	mm C
Appr	31_03_2011	ame012 Mehmenn			
SURFACE PROTECTION SEE GROUP 0344		TOLERANCING PRINCIPLE ISO8015		GENERAL TOLERANCES ACCORDING TO ISO2768-mk	
Made		Scale		Size	
31_10_2008		1:50		A1	
05_11_2008		ame012 Mehmenn		107,406.695	
31_03_2011		ame012 Mehmenn		C	

Download  
"DXF file"

Abgasseite  
EXHAUST SIDE



Antriebseite  
DRIVING END



RECOMMENDED
MINIMUM

AREA TO BE COVERED BY  
THE ENGINE ROOM CRANE

For safety and timesaving reasons it will be an advantage to increase the minimum area for moving the heavy components between the storing places and the engine or to the engine room hatch by using the engine room crane.

LIFTING AREA FOR  
SCAVENGE AIR COOLER

*TURBOCHARGER 1x A165-L*




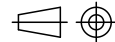
Gewicht ohne Wasser und Oel= 205 t  
WEIGHT WITHOUT WATER AND OIL

\* Platz fuer Demontage  
SPACE FOR REMOVAL

\*\* WITH EXHAUST WASTE GATE FOR LLT (OPTIONAL)

PLEASE NOTE:

MAIN STAIRS WITH MORE THAN 4 STEPS ONLY  
IN LONGITUDINAL DIRECTION OF THE ENGINE.

Free space for ITC								O-Code XXXXX		Main Drw.				
								Standard ISO JIS		H				
Modif.														
	Number	Drawn date	Number	Drawn date	Number	Drawn date	Number	Drawn date	Number	Drawn date				
 <b>WIN GD</b> <i>Winterthur Gas &amp; Diesel</i>			Product 6RT-flex48T-D v1		ENGINE OUTLINE VIEW									
					Motoransichten									
Units	mm kg	IDE			Basic Material				Net Weight 0,001					
Mode	16.11.2016 hda002 H.Doerre				Scale	1:50		Size	A1	Page	1/1	Material ID	PAAD233305	
Chkd	10.01.2017 lthe003 Herceg				Design Group		0812		Drawing ID	DAAD079896			Rev.	-
Appd	11.01.2017 bha009 Raag													
nrk														

DIMENSIONS ONLY FOR REFERENCE  
THIS OUTLINE DRAWING CAN NOT BE USED FOR FINAL DESIGN.  
PLEASE TAKE CORRESPONDING DESIGN GROUP

SURFACE PROTECTION SEE GROUP 0344
TOLERANCING PRINCIPLE ISO8015
GENERAL TOLERANCES ACCORDING TO ISO2768-mK

Mode	16.11.2016	hdo002	H. Doerre
Chkd	10.01.2017	ihe003	Herceg
Appd	11.01.2017	bha009	Haag

Scale	1:50	Size	A1	Page	1/1	Material ID	PAAD233305	
Design Group	0812	Drawing ID	DAAD079896				Rev.	—

## WinGD-6RT-flex48T-D\_Engine-outline-views

### TRACK CHANGES

DATE	SUBJECT	DESCRIPTION
2018-02-26	DRAWING SET	First web upload

### DISCLAIMER

© Copyright by Winterthur Gas & Diesel Ltd.

All rights reserved. No part of this document may be reproduced or copied in any form or by any means (electronic, mechanical, graphic, photocopying, recording, taping or other information retrieval systems) without the prior written permission of the copyright owner.

THIS PUBLICATION IS DESIGNED TO PROVIDE AN ACCURATE AND AUTHORITATIVE INFORMATION WITH REGARD TO THE SUBJECT-MATTER COVERED AS WAS AVAILABLE AT THE TIME OF PRINTING. HOWEVER, THE PUBLICATION DEALS WITH COMPLICATED TECHNICAL MATTERS SUITED ONLY FOR SPECIALISTS IN THE AREA, AND THE DESIGN OF THE SUBJECT-PRODUCTS IS SUBJECT TO REGULAR IMPROVEMENTS, MODIFICATIONS AND CHANGES. CONSEQUENTLY, THE PUBLISHER AND COPYRIGHT OWNER OF THIS PUBLICATION CAN NOT ACCEPT ANY RESPONSIBILITY OR LIABILITY FOR ANY EVENTUAL ERRORS OR OMISSIONS IN THIS BOOKLET OR FOR DISCREPANCIES ARISING FROM THE FEATURES OF ANY ACTUAL ITEM IN THE RESPECTIVE PRODUCT BEING DIFFERENT FROM THOSE SHOWN IN THIS PUBLICATION. THE PUBLISHER AND COPYRIGHT OWNER SHALL UNDER NO CIRCUMSTANCES BE HELD LIABLE FOR ANY FINANCIAL CONSEQUENTIAL DAMAGES OR OTHER LOSS, OR ANY OTHER DAMAGE OR INJURY, SUFFERED BY ANY PARTY MAKING USE OF THIS PUBLICATION OR THE INFORMATION CONTAINED HEREIN.