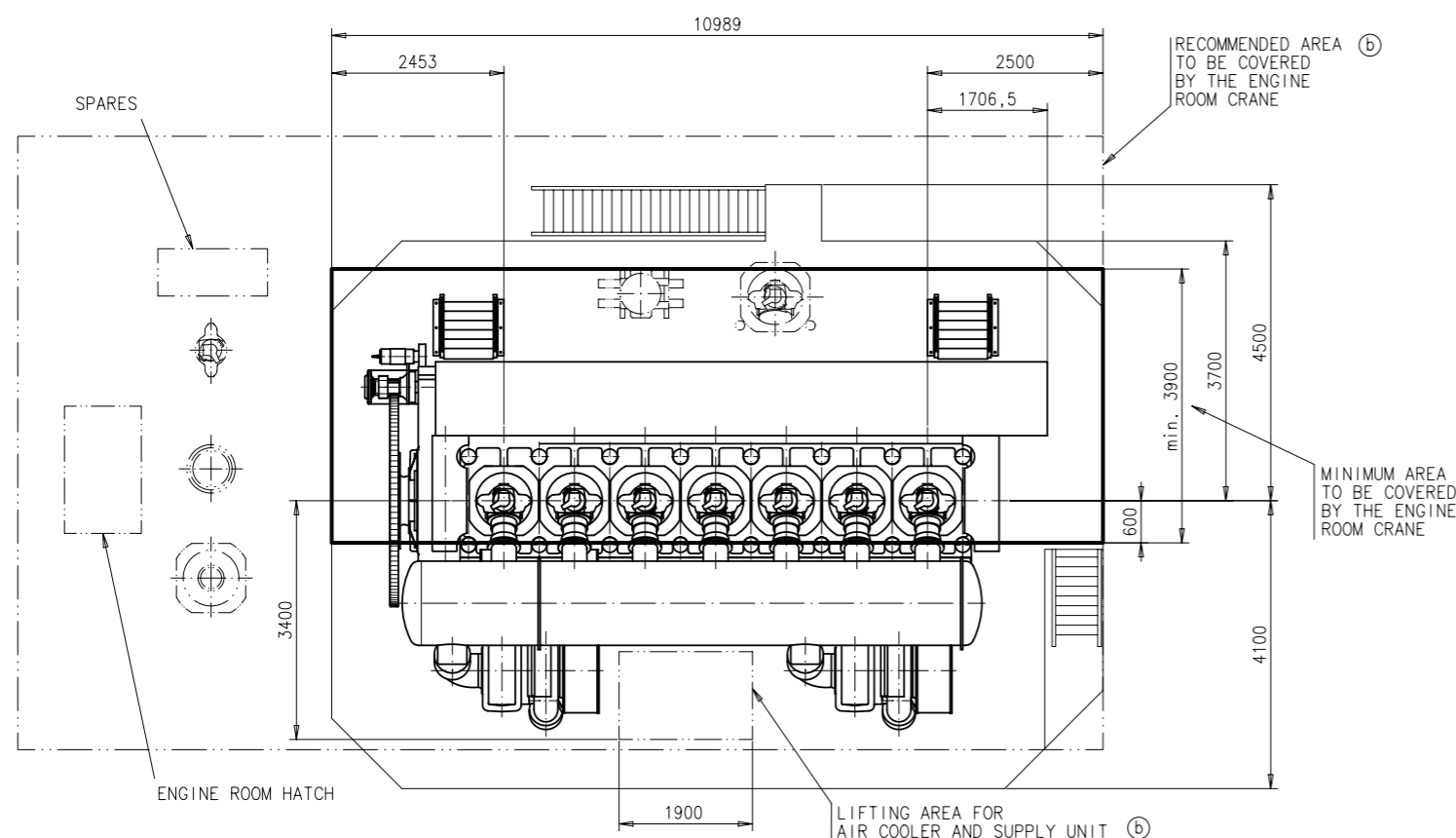
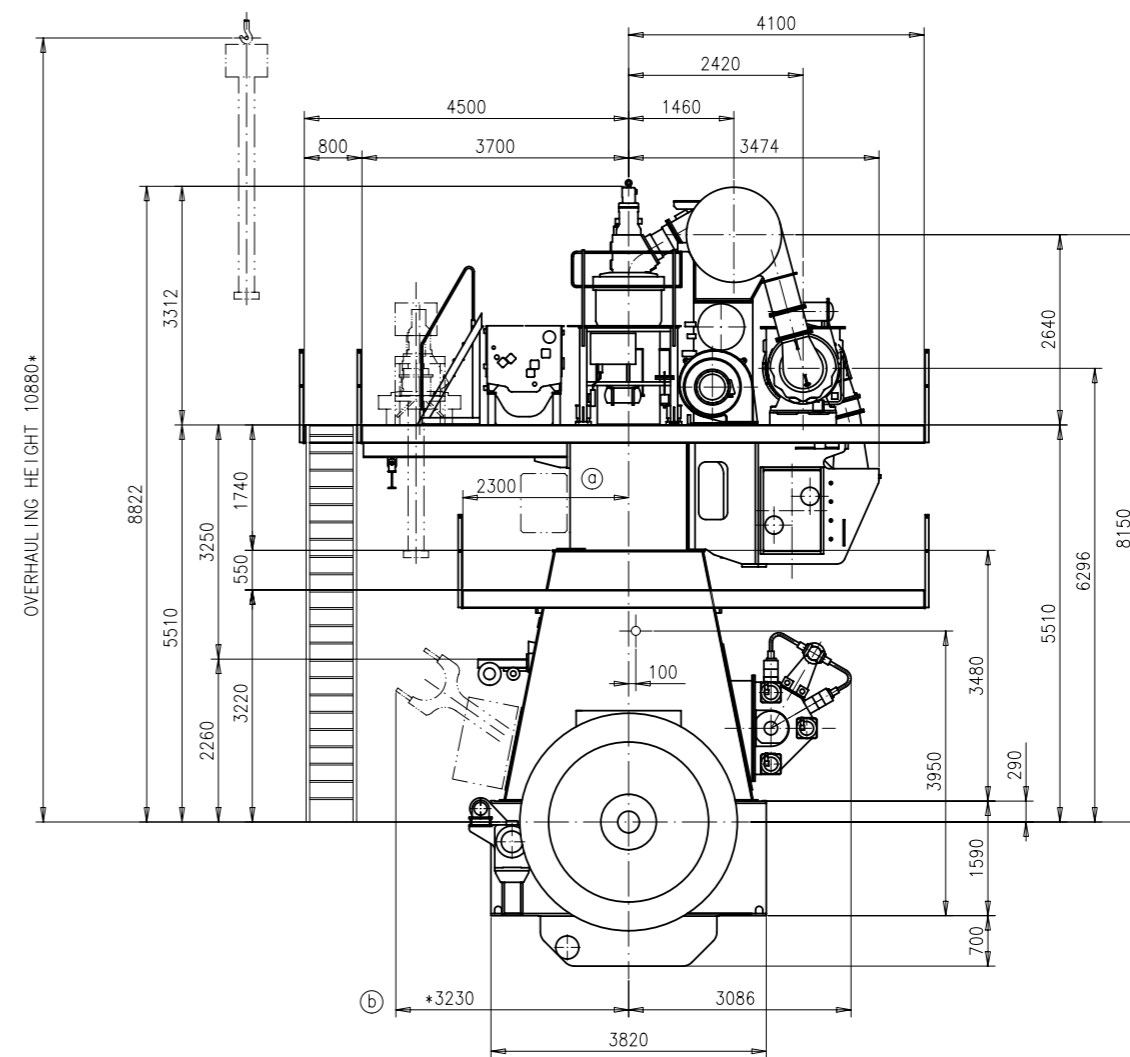
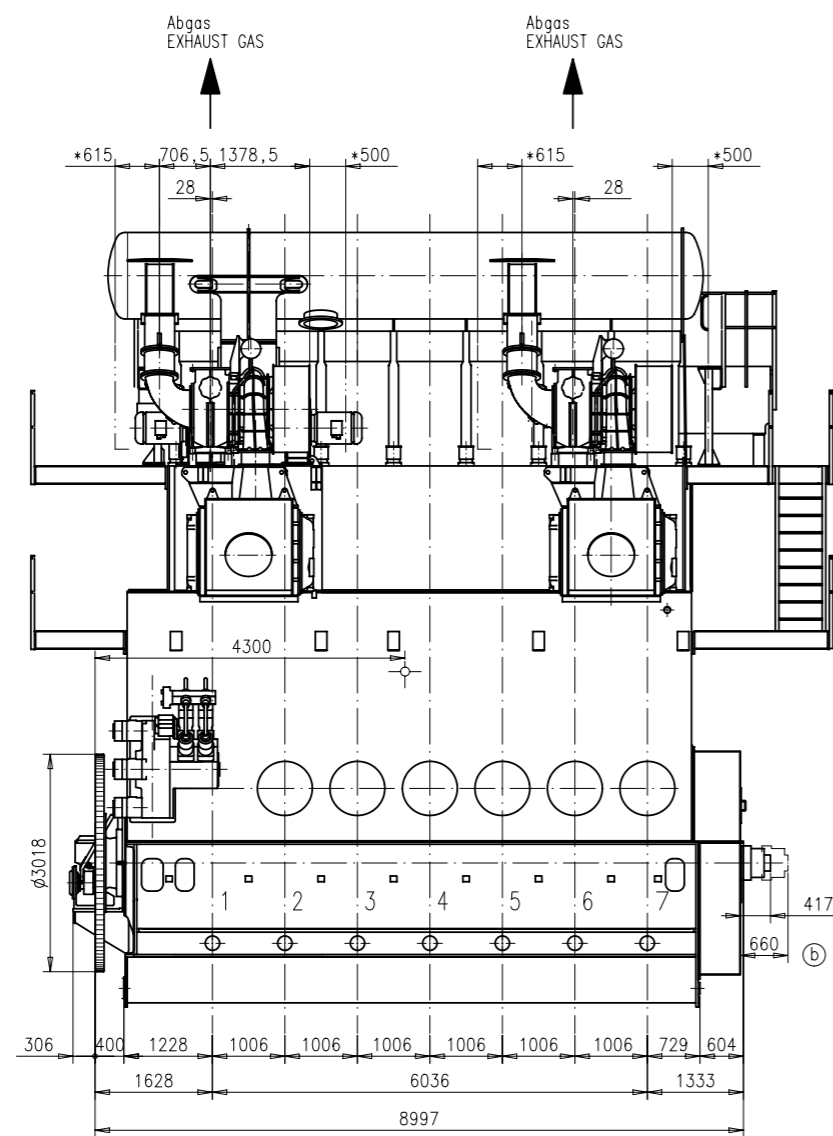
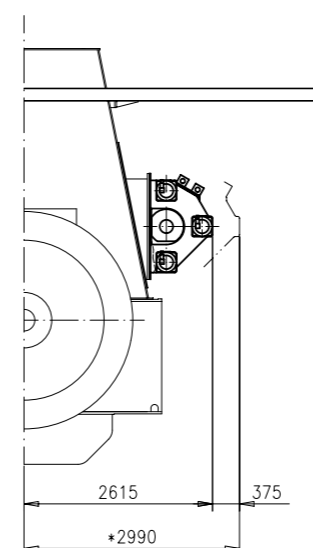


Download
"DXF file"



Ausbau
DISMANTLING ⑥



⊙ = ca. Schwerpunkt
AB. CENTRE OF GRAVITY

* = Platz fuer Demontage
SPACE FOR REMOVAL

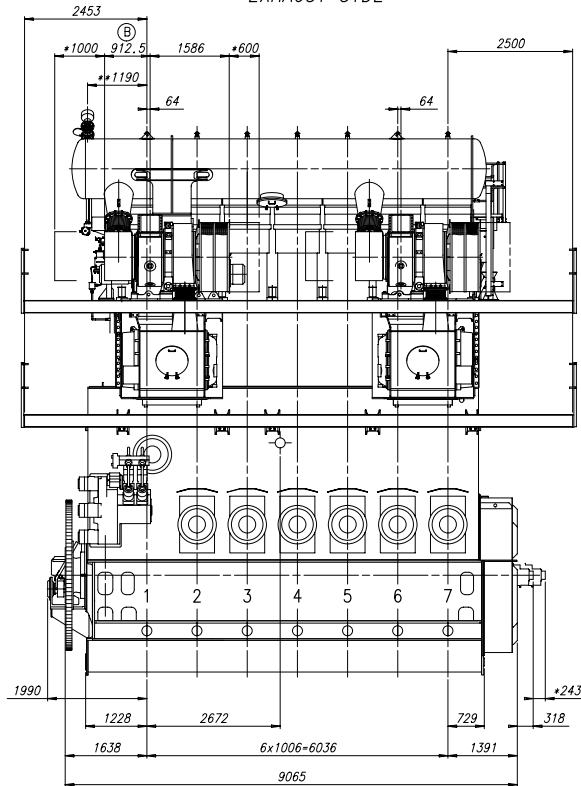
Gewicht ohne Wasser und Oel = 377 t ⑥
WEIGHT WITHOUT WATER AND OIL

2xTPL73-B

WARTSILA									
WARTSILA									
WARTSILA									
WARTSILA									
WARTSILA									
WARTSILA									
WARTSILA									
WARTSILA									
WARTSILA									
WARTSILA									
WARTSILA									
WARTSILA									
WARTSILA									
WARTSILA									
WARTSILA									
WARTSILA									
WARTSILA									
WARTSILA									
WARTSILA									
WARTSILA									
WARTSILA									
WARTSILA									
WARTSILA									
WARTSILA									
WARTSILA									
WARTSILA									
WARTSILA									
WARTSILA									
WARTSILA									
WARTSILA									
WARTSILA									
WARTSILA									
WARTSILA									
WARTSILA									
WARTSILA									
WARTSILA									
WARTSILA									
WARTSILA									
WARTSILA									
WARTSILA									
WARTSILA									
WARTSILA									
WARTSILA									
WARTSILA									
WARTSILA									
WARTSILA									
WARTSILA									
WARTSILA									
WARTSILA									
WARTSILA									
WARTSILA									
WARTSILA									
WARTSILA									
WARTSILA									
WARTSILA									
WARTSILA									
WARTSILA									
WARTSILA									
WARTSILA									
WARTSILA									
WARTSILA									
WARTSILA									
WARTSILA									
WARTSILA									
WARTSILA									
WARTSILA									
WARTSILA									
WARTSILA									
WARTSILA									
WARTSILA									
WARTSILA									
WARTSILA									
WARTSILA									
WARTSILA									
WARTSILA									
WARTSILA									
WARTSILA									
WARTSILA									
WARTSILA									
WARTSILA									
WARTSILA									
WARTSILA									
WARTSILA									
WARTSILA									
WARTSILA									
WARTSILA									
WARTSILA									
WARTSILA									
WARTSILA									
WARTSILA									
WARTSILA									
WARTSILA									
WARTSILA									
WARTSILA									
WARTSILA									
WARTSILA									
WARTSILA									
WARTSILA									
WARTSILA									
WARTSILA									
WARTSILA									
WARTSILA									
WARTSILA									
WARTSILA									
WARTSILA									
WARTSILA									
WARTSILA									
WARTSILA									
WARTSILA									
WARTSILA									
WARTSILA									
WARTSILA									
WARTSILA									
WARTSILA									
WARTSILA									
WARTSILA									
WARTSILA									
WARTSILA									
WARTSILA									
WARTSILA									
WARTSILA									
WARTSILA									
WARTSILA									
WARTSILA									
WARTSILA									
WARTSILA									
WARTSILA									
WARTSILA									
WARTSILA									
WARTSILA									
WARTSILA									
WARTSILA									
WARTSILA									
WARTSILA									
WARTSILA									
WARTSILA									
WARTSILA									
WARTSILA									
WARTSILA									
WARTSILA									
WARTSILA									
WARTSILA									
WARTSILA									
WARTSILA									
WARTSILA									
WARTSILA									
WARTSILA									
WARTSILA									
WARTSILA									
WARTSILA									
WARTSILA									
WARTSILA									
WARTSILA									
WARTSILA									
WARTSILA									
WARTSILA									
WARTSILA									
WARTSILA									
WARTSILA									
WARTSILA									
WARTSILA									
WARTSILA									
WARTSILA									
WARTSILA									
WARTSILA									
WARTSILA									
WARTSILA									
WARTSILA									
WARTSILA									
WARTSILA									
WARTSILA									
WARTSILA									
WARTSILA									
WARTSILA									
WARTSILA									
WARTSILA									
WARTSILA									
WARTSILA									
WARTSILA									
WARTSILA									
WARTSILA									
WARTSILA									
WARTSILA									
WARTSILA									
WARTSILA									
WARTSILA									
WARTSILA									
WARTSILA									
WARTSILA									
WARTSILA									
WARTSILA									
WARTSILA									
WARTSILA									
WARTSILA									
WARTSILA									
WARTSILA									
WARTSILA									
WARTSILA									
WARTSILA									
WARTSILA									
WARTSILA									
WARTSILA									
WARTSILA									
WARTSILA									
WARTSILA									
WARTSILA									
WARTSILA									
WARTSILA									
WARTSILA									
WARTSILA									
WARTSILA									
WARTSILA									
WARTSILA									
WARTSILA									
WARTSILA									
WARTSILA									
WARTSILA									
WARTSILA									
WARTSILA									
WARTSILA									
WARTSILA									
WARTSILA									
WARTSILA									
WARTSILA									
WARTSILA									
WARTSILA									
WARTSILA									
WARTSILA									
WARTSILA									
WARTSILA									
WARTSILA									
WARTSILA									
WARTSILA									
WARTSILA									
WARTSILA									
WARTSILA									
WARTSILA									
WARTSILA									
WARTSILA									
WARTSILA									
WARTSILA									
WARTSILA									
WARTSILA									
WARTSILA									
WARTSILA									
WARTSILA									
WARTSILA									
WARTSILA									
WARTSILA									
WARTSILA									
WARTSILA									
WARTSILA									
WARTSILA									
WARTSILA									
WARTSILA									
WARTSILA									
WARTSILA									
WARTSILA									
WARTSILA									
WARTSILA									
WARTSILA									
WARTSILA									
WARTSILA									
WARTSILA									
WARTSILA									
WARTSILA									
WARTSILA									
WARTSILA									
WARTSILA									
WARTSILA									
WARTSILA									
WARTSILA									
WARTSILA									
WARTSILA									
WARTSILA									
WARTSILA									
WARTSILA									
WARTSILA									
WARTSILA									
WARTSILA									
WARTSILA									
WARTSILA									
WARTSILA									
WARTSILA									
WARTSILA									
WARTSILA									
WARTSILA									
WARTSILA									
WARTSILA									
WARTSILA									
WARTSILA									
WARTSILA									
WARTSILA									
WARTSILA									
WARTSILA									
WARTSILA									
WARTSILA									
WARTSILA									
WARTSILA									
WARTSILA									
WARTSILA									
WARTSILA									
WARTSILA									
WARTSILA									
WARTSILA									
WARTSILA									
WARTSILA									
WARTSILA									
WARTSILA									
WARTSILA									
WARTSILA									
WARTSILA									
WARTSILA									
WARTSILA									
WARTSILA									

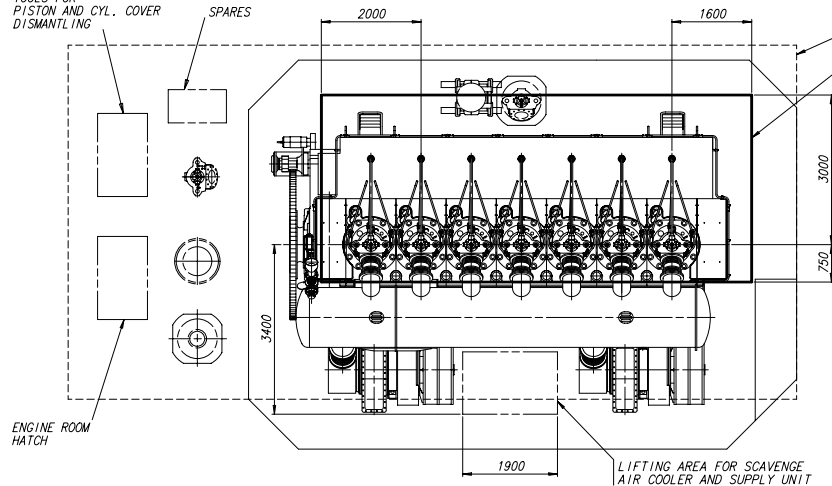
Download
"DXF file"

Abgasseite
EXHAUST SIDE



TOOLS FOR
PISTON AND CYL. COVER
DISMANTLING

SPARES

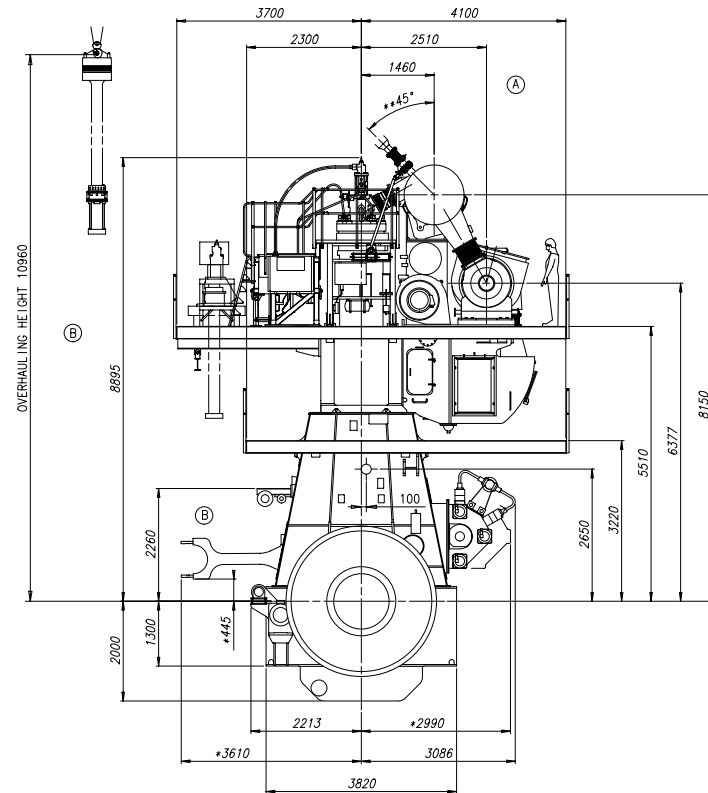


RECOMMENDED
MINIMUM

AREA TO BE COVERED BY
THE ENGINE ROOM CRANE

For safety and timesaving reasons it will be an advantage to increase the minimum area for moving the heavy components between the storing places and the engine or to the engine room hatch by using the engine room crane.

Antriebsseite
DRIVING END



TURBOCHARGER 2xMET53MB

SUPPLY UNIT ON EXHAUST SIDE

 ca. Schwerpunkt
APPROX. CENTRE OF GRAVITY


* Platz fuer Demontage
SPACE FOR REMOVAL

** WITH EXHAUST WASTE GATE FOR
LLT (OPTIONAL). DESIGNED FOR ANGLE 45°

Gewicht ohne Wasser und Öl= 377 t
WEIGHT WITHOUT WATER AND OIL

PLEASE NOTE:

MAIN STAIRS WITH MORE THAN 4 STEPS ONLY
IN LONGITUDINAL DIRECTION OF THE ENGINE.

		Product: 7RT-flex58-D		ENGINE OUTLINE VIEW Motoransichten	
Unit mm kg	IDE	Basic Material		Net Weight 0.001	
06.07.2011 hr1004 R.Riser		Scale 1:50	Size A1	PAAD053888	
03.08.2011 bsc002 Schweizer		Design Group		Material 1/1	
24.02.2012 oho005 Habicht		0812	Drawing No. DAAD018823	Rev. 0	

WinGD-7RT-flex58T-D_Engine-outline-views

TRACK CHANGES

DATE	SUBJECT	DESCRIPTION
2018-02-26	DRAWING SET	First web upload

DISCLAIMER

© Copyright by Winterthur Gas & Diesel Ltd.

All rights reserved. No part of this document may be reproduced or copied in any form or by any means (electronic, mechanical, graphic, photocopying, recording, taping or other information retrieval systems) without the prior written permission of the copyright owner.

THIS PUBLICATION IS DESIGNED TO PROVIDE AN ACCURATE AND AUTHORITATIVE INFORMATION WITH REGARD TO THE SUBJECT-MATTER COVERED AS WAS AVAILABLE AT THE TIME OF PRINTING. HOWEVER, THE PUBLICATION DEALS WITH COMPLICATED TECHNICAL MATTERS SUITED ONLY FOR SPECIALISTS IN THE AREA, AND THE DESIGN OF THE SUBJECT-PRODUCTS IS SUBJECT TO REGULAR IMPROVEMENTS, MODIFICATIONS AND CHANGES. CONSEQUENTLY, THE PUBLISHER AND COPYRIGHT OWNER OF THIS PUBLICATION CAN NOT ACCEPT ANY RESPONSIBILITY OR LIABILITY FOR ANY EVENTUAL ERRORS OR OMISSIONS IN THIS BOOKLET OR FOR DISCREPANCIES ARISING FROM THE FEATURES OF ANY ACTUAL ITEM IN THE RESPECTIVE PRODUCT BEING DIFFERENT FROM THOSE SHOWN IN THIS PUBLICATION. THE PUBLISHER AND COPYRIGHT OWNER SHALL UNDER NO CIRCUMSTANCES BE HELD LIABLE FOR ANY FINANCIAL CONSEQUENTIAL DAMAGES OR OTHER LOSS, OR ANY OTHER DAMAGE OR INJURY, SUFFERED BY ANY PARTY MAKING USE OF THIS PUBLICATION OR THE INFORMATION CONTAINED HEREIN.