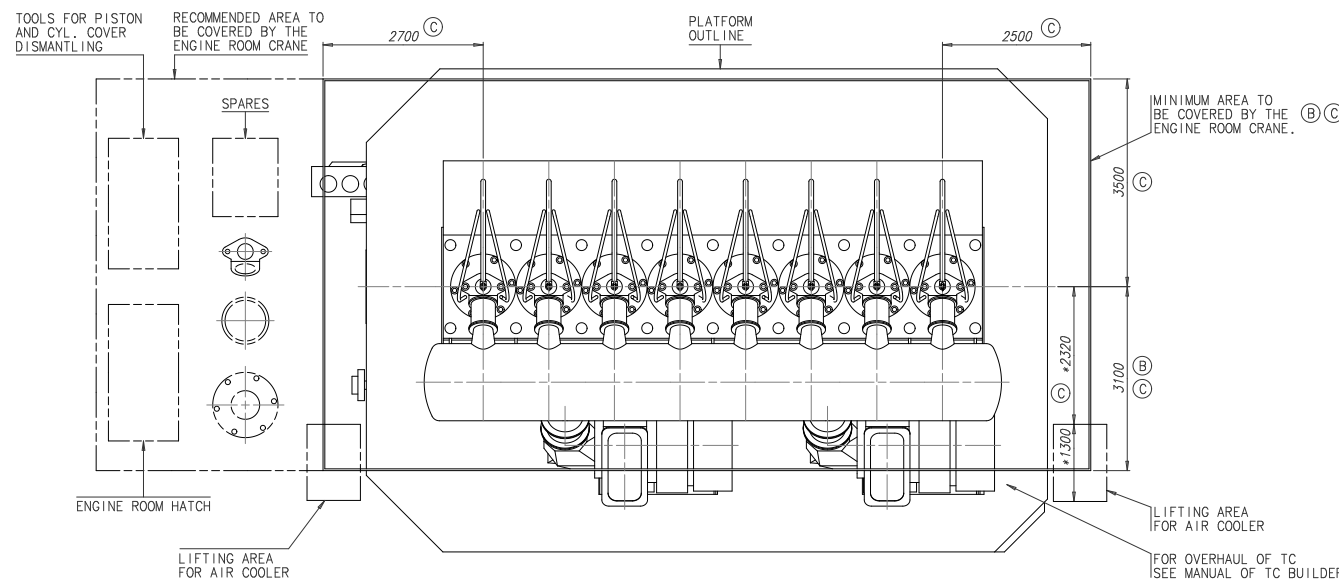


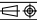


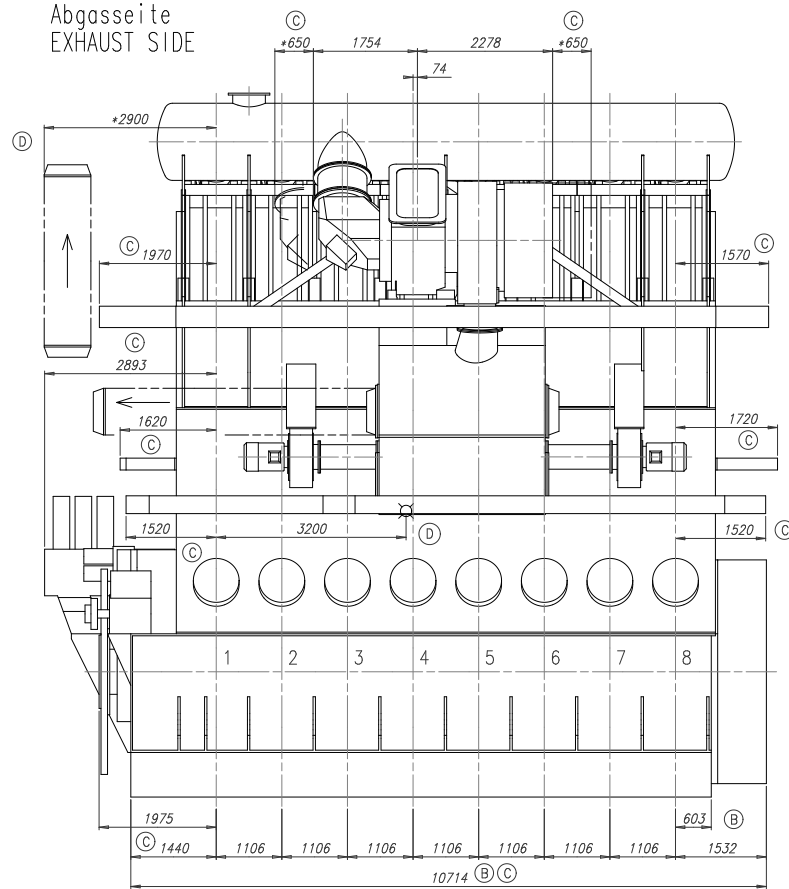
Abgasseite
EXHAUST SIDE



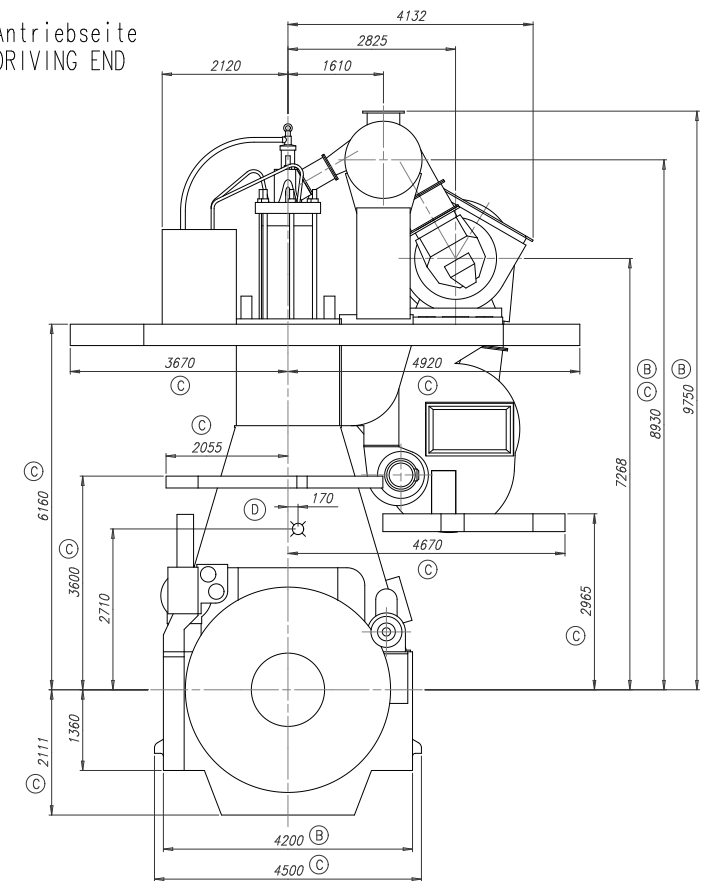
| | | | | | | | | | | | | |
|---|------------|---|------------|---|------------|---|---|---------------------|------------|----------------------------------|--------------|------------|
| D | | X | | co. Schwerpunkt APPROX. CENTRE OF GRAVITY | | | | | | | | |
| Gewicht ohne Wasser und Öl= 482 t WEIGHT WITHOUT WATER AND OIL | | | | | | | | | | | | |
| * Platz fuer Demontage SPACE FOR REMOVAL | | | | | | | | | | | | |
| TURBOCHARGER A175-L | | | | | | | | | | | | |
| 1 | | 001 | | PAAD082991 | | DISMANTLING DIMENSIONS | | DAAD027102 | | O_001 | | |
| QTY | SQ ID | Material ID | | Material Name | | Dimensions/Occ.Dimensions | | Standard or Drawing | | Basic Material Material Standard | | |
| Free space for IEC | | | | | | | | | xxxxxx | | Neig. Dr. | |
| | | | | | | | | | Standard | | ISO JIS | |
| | | | | | | | | | | | H | |
| | | | | | | | | | | | | |
| Mod. | A | EAND083762 | 18.04.2012 | B | EAND084217 | 23.10.2012 | C | EAND084341 | 11.12.2012 | D | EAND085447 | 25.09.2014 |
| | | Number | Draw date | | Number | Draw date | | Number | Draw date | | Number | Draw date |
| | |  | | Product WSX62 | | ENGINE OUTLINE VIEW A175-L Motoransichten A175-L | | | | | | |
| | |  | | | | Basic Material | | | | Net Weight O_001 | | |
| Units | mm kg | IDE | |  | | Scale 1:45 | | Size A1 | Page 1/1 | Material ID | PAAD055125 | |
| Model | 18.07.2011 | csc001 C.Schmutz | | | | Design Group | | | | | | |
| Chad | 20.02.2012 | pne001 Neracher | | | | Drawing ID | | 0812 | | DAAD019096 | Rev. D | |
| Appd | 20.02.2012 | bfr005 Frei | | | | | | | | | | |

Download
"DXF file"

Abgasseite
EXHAUST SIDE



Antriebsseite
DRIVING END



TOOLS FOR PISTON AND CYL. COVER DISMANTLING

RECOMMENDED AREA TO
BE COVERED BY THE
ENGINE ROOM CRANE

PLATFORM OUTLINE

MINIMUM AREA TO BE COVERED BY THE ENGINE ROOM CRANE. (B) (C)

ENGINE ROOM HATCH

LIFTING AREA FOR
SCAVENGE AIR COOLER



FOR OVERHAUL OF TC
SEE MANUAL OF TC BUILDER

Ⓓ ☒ ca. Schwerpunkt
APPROX. CENTRE OF GRAVITY

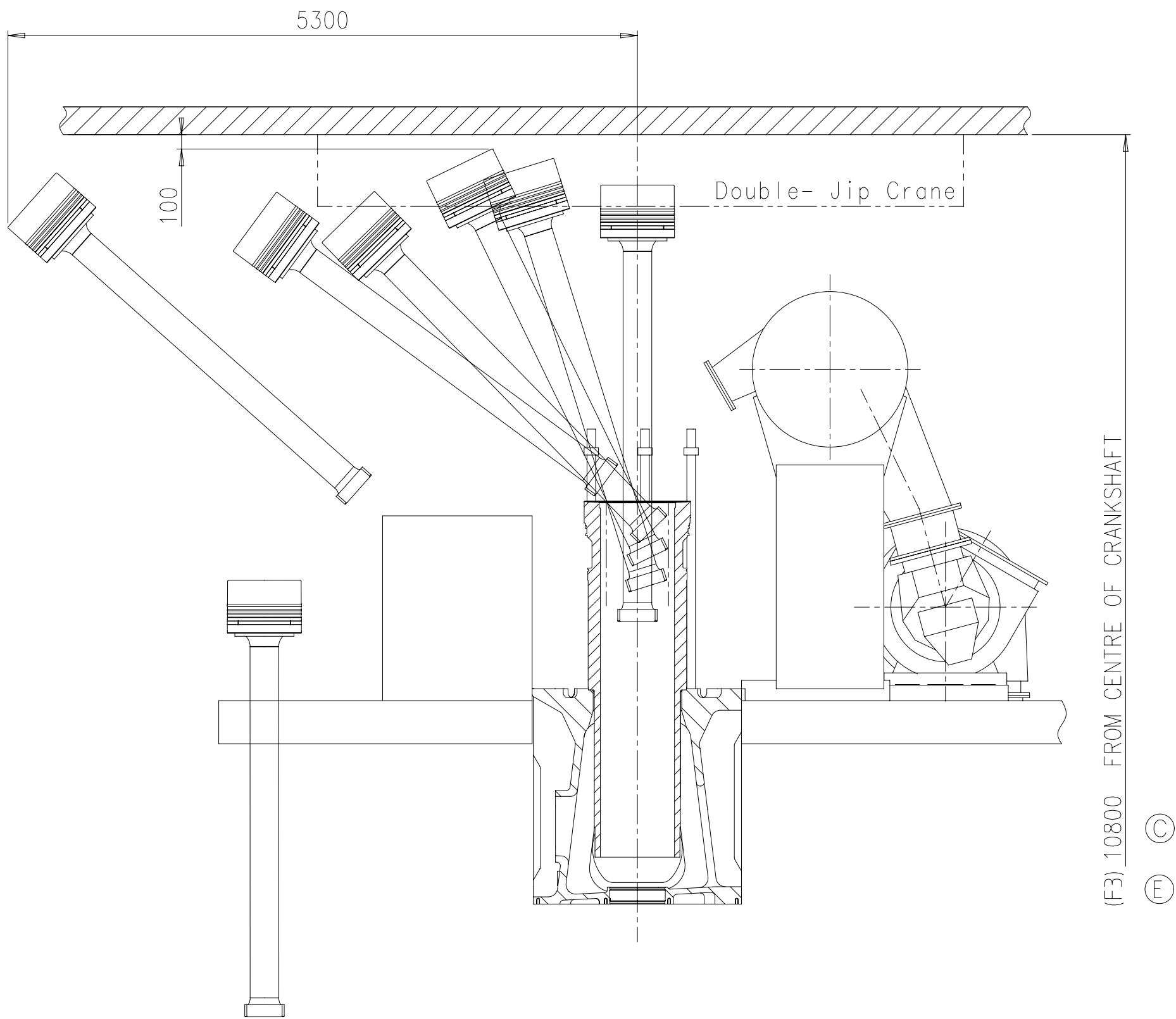
Gewicht ohne Wasser und Oel= 482 t
WEIGHT WITHOUT WATER AND OIL

* Platz fuer Demontage
SPACE FOR REMOVAL

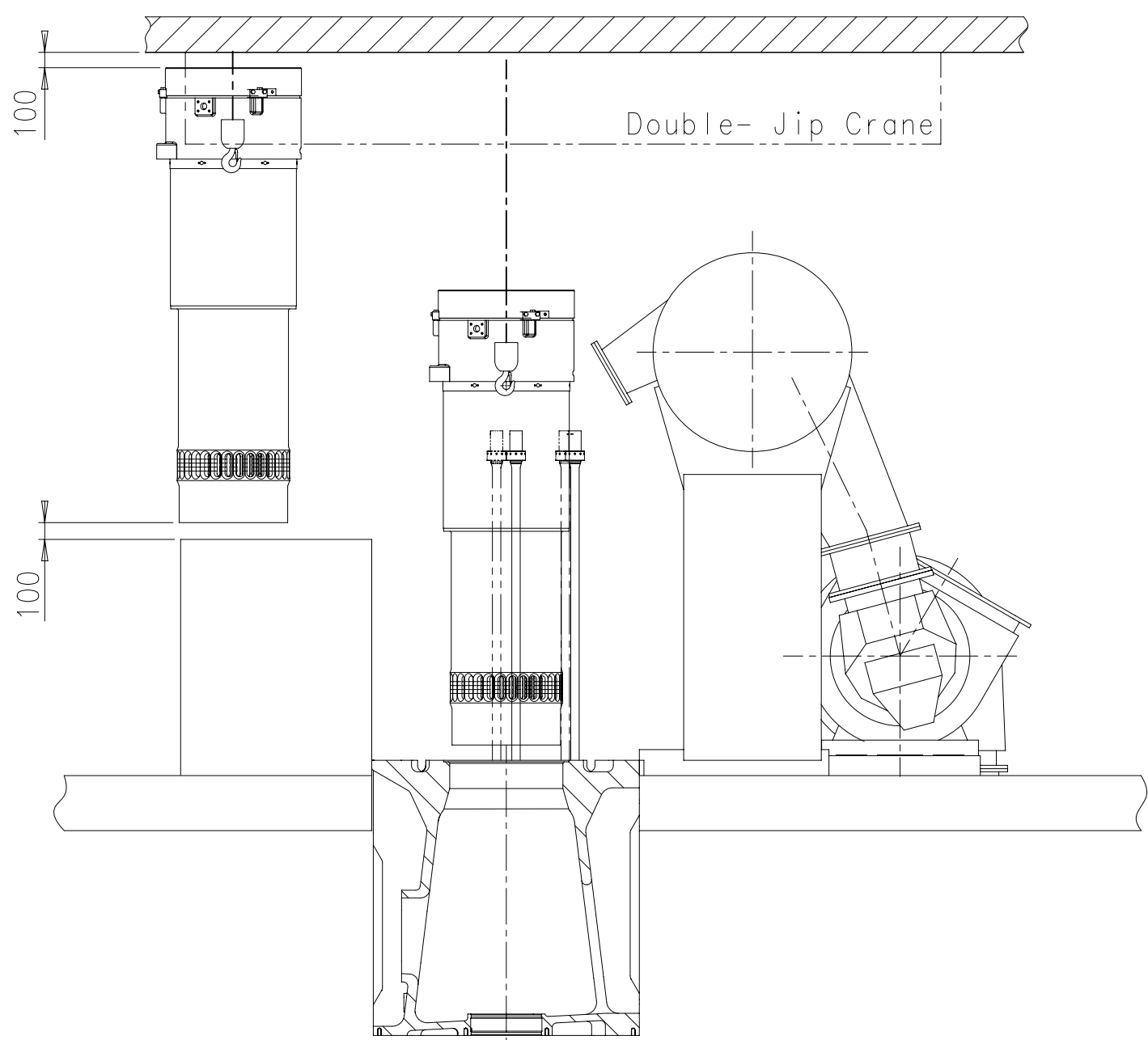
TURBOCHARGER A185-L

| | | | | | | | | | | | |
|---|----------|-------------|------------------------|---|--|--------------------------------|---------------------|------------|------------|----------|------------|
| 1 | 001 | PAAD082991 | DISMANTLING DIMENSIONS | | | DAAD027102 | | 0.001 | | | |
| QTY | STD ID | Material ID | Material Name | Dimension/Occ. Dimension | Standard or Drawing | Basic Material Material Number | Weight (g./kg.) | | | | |
| Free space for LC. | | | | | | Q-Code | XXXXXX Main Draw. | | | | |
| | | | | | | Standard | ISO JIS H | | | | |
| | | | | | | | | | | | |
| Modt. | A | EAAD083762 | B | EAAD084217 | C | EAAD084341 | D | EAAD085447 | 25.09.2012 | | |
| | Number | Drawn date | Number | Drawn date | Number | Drawn date | Number | Drawn date | | | |
|  | | | Product WBX62 | | ENGINE OUTLINE VIEW A185-L Motorsnichten A185-L | | | | | | |
| Units | mm | kg | IDE |  | Basic Material | | Net Weight (g./kg.) | | | | |
| Mode | 01.02.12 | csc001 | C. Schmitz | Scale | 1:45 | Size | A1 | Page | 1/1 | Material | PAAD074640 |
| Chkd | 20.02.12 | pne001 | Neracher | Design Group | | | | | | | |
| Appd | 20.02.12 | pb005 | Frei | 0812 | | Drawing ID | DAAD027436 | | | Rev. | D |

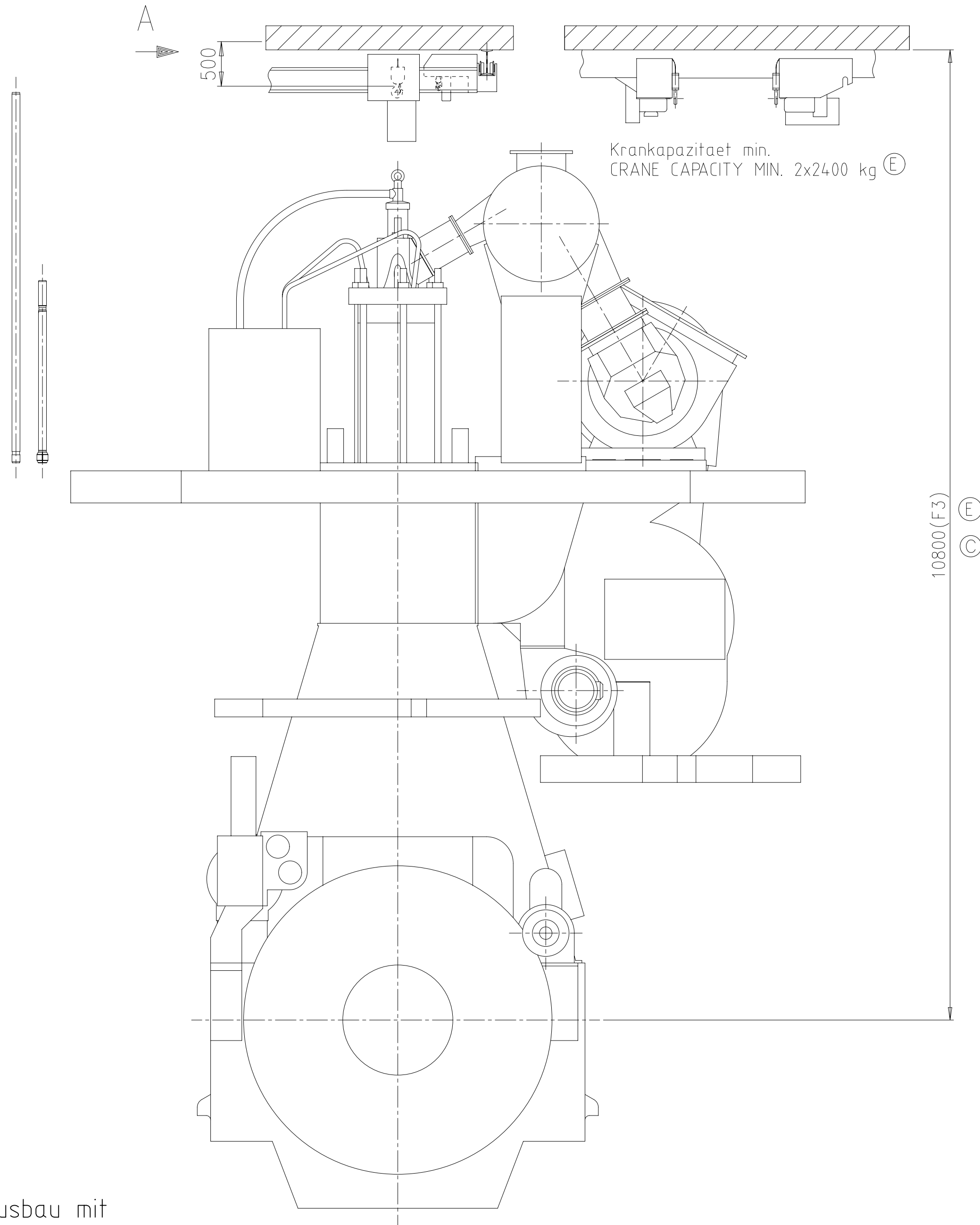
Copyright Wirtbil. All rights reserved. By taking possession of the drawing the recipient recognizes and honours these rights. Neither the whole nor any part of this drawing may be used in any way for construction, fabrication, marketing or any other purpose nor copied in any way nor made accessible to third parties without the previous written consent of Wirtbil.



1. Disassembly of exhaust valve cage, cylinder cover and upper water guide jacket
2. Disassemble three cylinder cover bolts on fuel side
3. Pull out the piston with standard piston disassembly tool, then attach tool for further lifting
4. Proceed with tilted piston removal
5. place piston on support for overhaul



6. Put the pins for liner lifting into designated holes
7. Attach crane hooks for lifting
8. Pull out the liner until over top of rail unit
9. Move liner over rail unit and put in designated place for overhaul



Ⓐ Kompatibilitaetshinweis zum Kranhaken für Double-Jib Kran

Die Hebwerkzeuge zu diesem Motor sind kompatibel mit folgenden Kranhaken:
DIN 15401: Form RSN, Hakennummer 08

COMPATIBILITY NOTE FOR CRANE HOOK FOR DOUBLE-JINB CRANE

THE LIFTING TOOLS FOR THIS ENGINE ARE COMPATIBLE WITH FOLLOWING CRANE HOOK:
DIN 15401: SHAPE RSN, HOOK NUMBER 08

Ⓔ Voraussetzungen fuer diese Ausbauart

- zweiteilige Zylinderdeckel-Dehnbolzen auf der Brennstoffseite
- zweiteilige Zuganker im Reparaturfall
- Spezialkran (DOUBLE-JIB)
- spezielle Hebwerkzeuge fuer den Zylindereinsatz und den Kolben

REQUIREMENTS FOR THIS DISMANTLING METHOD

- TWO-PIECE ELASTIC STUDS FOR CYLINDER COVER ON FUEL SIDE
- TWO-PART TIE ROD IN CASE OF REPAIR
- SPECIAL CRANE (DOUBLE-JIB)
- SPECIAL LIFTING TOOLS FOR CYLINDER LINER AND PISTON

Ⓔ Standardausbau mit Double-Jib Kran

Minimale Hoehe fuer den gekippten Ausbau mit dem Double-Jib Kran: F3
Die Distanz von der obersten Hakenposition bis zur Decke varriert je nach der ausgewaehlten Kranausfuehrung

Für gekippten Ausbau mit Double-Jib E/R Kran von Fuchs Foerdertechnik AG

STANDARD DISMANTLING WITH DOUBLE-JIB CRANE

MIN. HEIGHT FOR TILTED WITH DOUBLE-JIB CRANE: F3
DISTANCE BETWEEN TOP POSITION OF HOOK AND ENGINE ROOM CEILING VARIES DEPENDING ON CRANE TYPE.

FOR TILTED REMOVAL WITH DOUBLE JIB E/R CRANE BY FUCHS FOERDERTECHNIK AG

| | | | | | | | | | | | | |
|--|--------|------------|------------------|--------|-------|------|------|------------|------|-------------|------------|---|
| SURFACE PROTECTION SEE GROUP 0344 | Modif. | 17.04.2012 | csr001 C.Schmutz | Scale | 1:25 | Size | A1 | Page | 2/2 | Material ID | PAAD082991 | |
| TOLERANCING PRINCIPLE ISO8015 | Chkd | 02.05.2012 | pne001 Neracher | Design | Group | 0812 | 0812 | DAAD027102 | 0812 | DAAD027102 | Rev. | E |
| GENERAL TOLERANCES ACCORDING TO ISO2768-mK | Appd | 03.05.2012 | bfr005 Frei | | | | | | | | | |

WinGD-8X62_Engine-outline-views

TRACK CHANGES

| DATE | SUBJECT | DESCRIPTION |
|------------|-------------|--|
| 2018-02-26 | DRAWING SET | First web upload |
| 2020-07-17 | DAAD027102 | Revised Dismantling Dimensions drawing has been updated. |

DISCLAIMER

© Copyright by Winterthur Gas & Diesel Ltd.

All rights reserved. No part of this document may be reproduced or copied in any form or by any means (electronic, mechanical, graphic, photocopying, recording, taping or other information retrieval systems) without the prior written permission of the copyright owner.

THIS PUBLICATION IS DESIGNED TO PROVIDE AN ACCURATE AND AUTHORITATIVE INFORMATION WITH REGARD TO THE SUBJECT-MATTER COVERED AS WAS AVAILABLE AT THE TIME OF PRINTING. HOWEVER, THE PUBLICATION DEALS WITH COMPLICATED TECHNICAL MATTERS SUITED ONLY FOR SPECIALISTS IN THE AREA, AND THE DESIGN OF THE SUBJECT-PRODUCTS IS SUBJECT TO REGULAR IMPROVEMENTS, MODIFICATIONS AND CHANGES. CONSEQUENTLY, THE PUBLISHER AND COPYRIGHT OWNER OF THIS PUBLICATION CAN NOT ACCEPT ANY RESPONSIBILITY OR LIABILITY FOR ANY EVENTUAL ERRORS OR OMISSIONS IN THIS BOOKLET OR FOR DISCREPANCIES ARISING FROM THE FEATURES OF ANY ACTUAL ITEM IN THE RESPECTIVE PRODUCT BEING DIFFERENT FROM THOSE SHOWN IN THIS PUBLICATION. THE PUBLISHER AND COPYRIGHT OWNER SHALL UNDER NO CIRCUMSTANCES BE HELD LIABLE FOR ANY FINANCIAL CONSEQUENTIAL DAMAGES OR OTHER LOSS, OR ANY OTHER DAMAGE OR INJURY, SUFFERED BY ANY PARTY MAKING USE OF THIS PUBLICATION OR THE INFORMATION CONTAINED HEREIN.