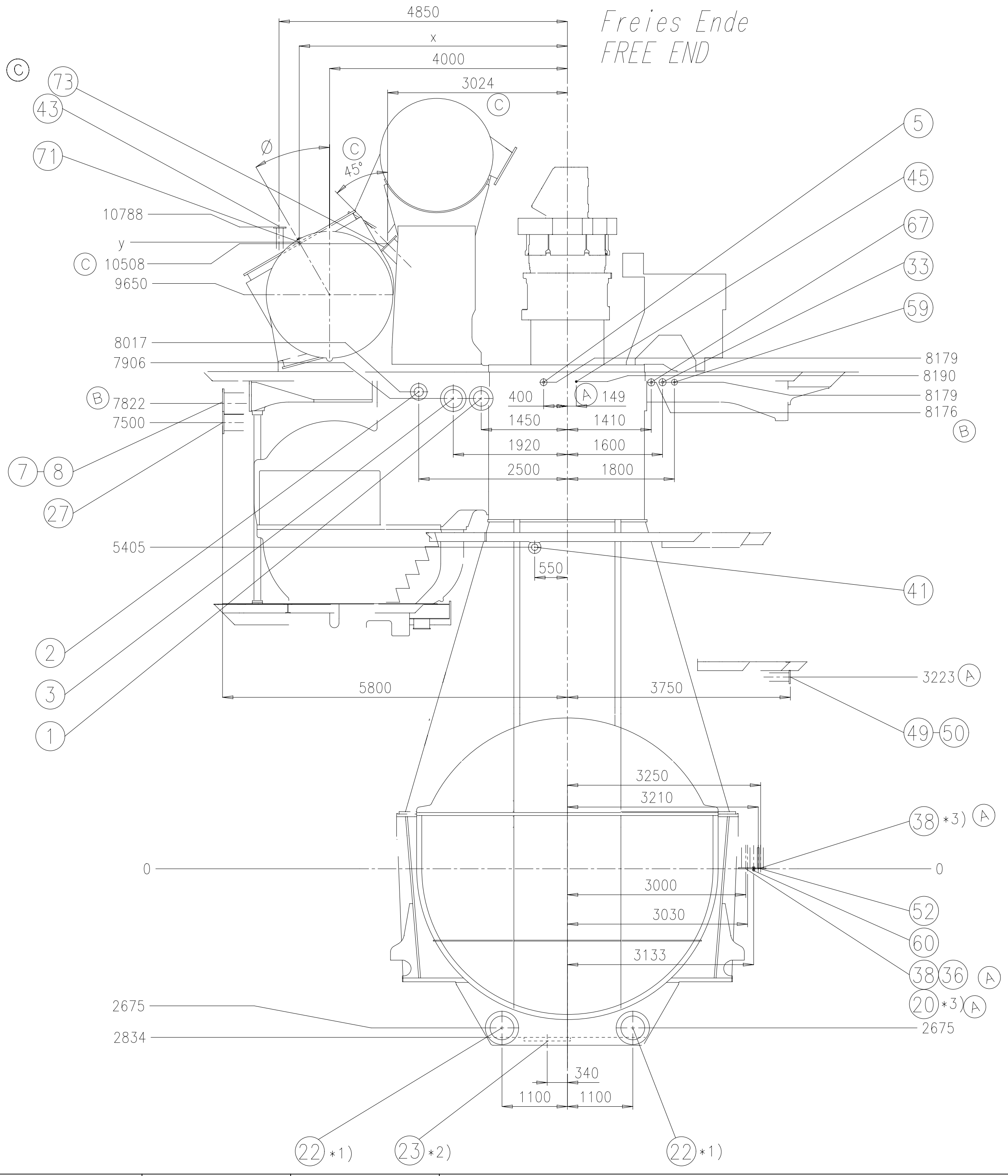
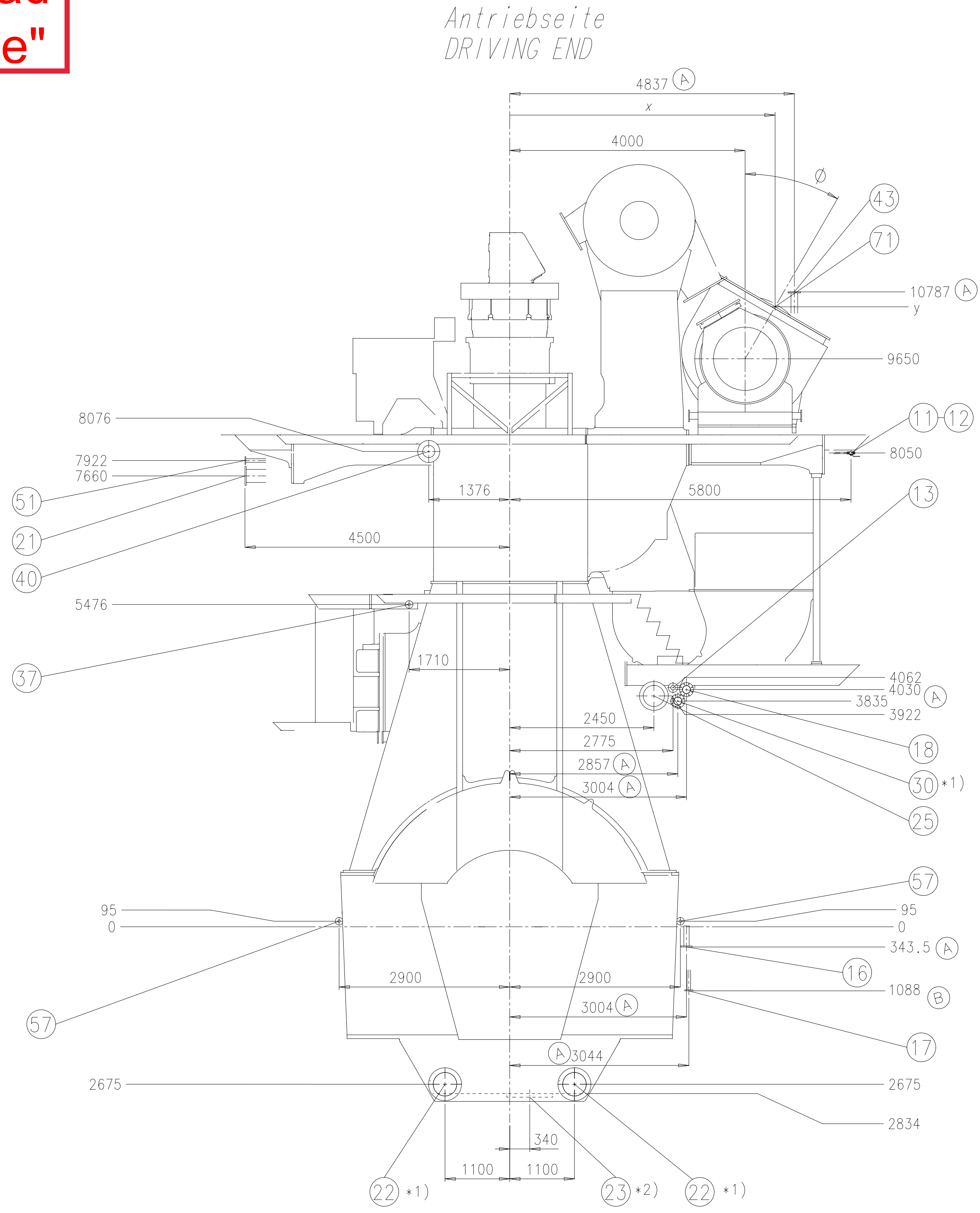
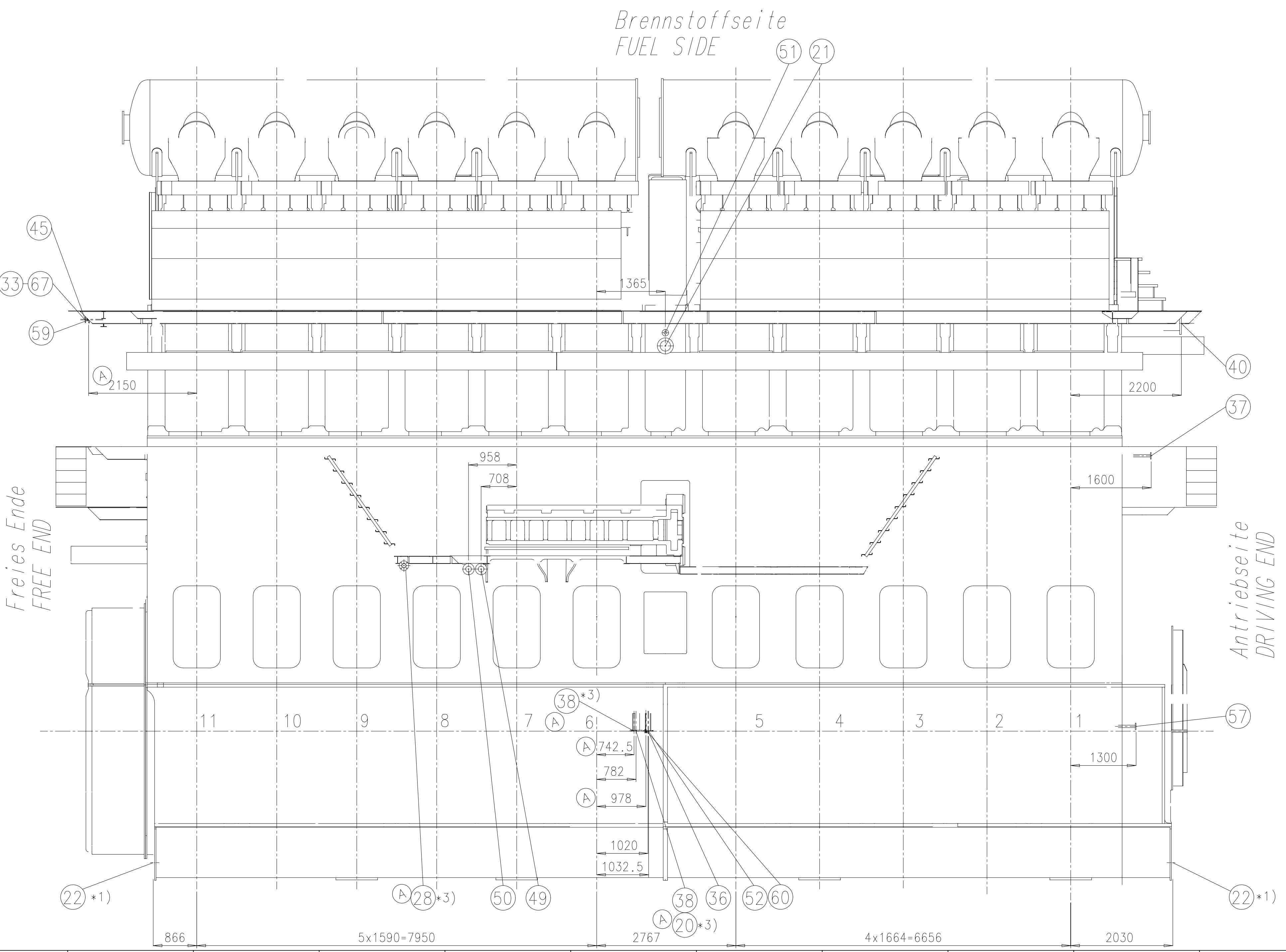
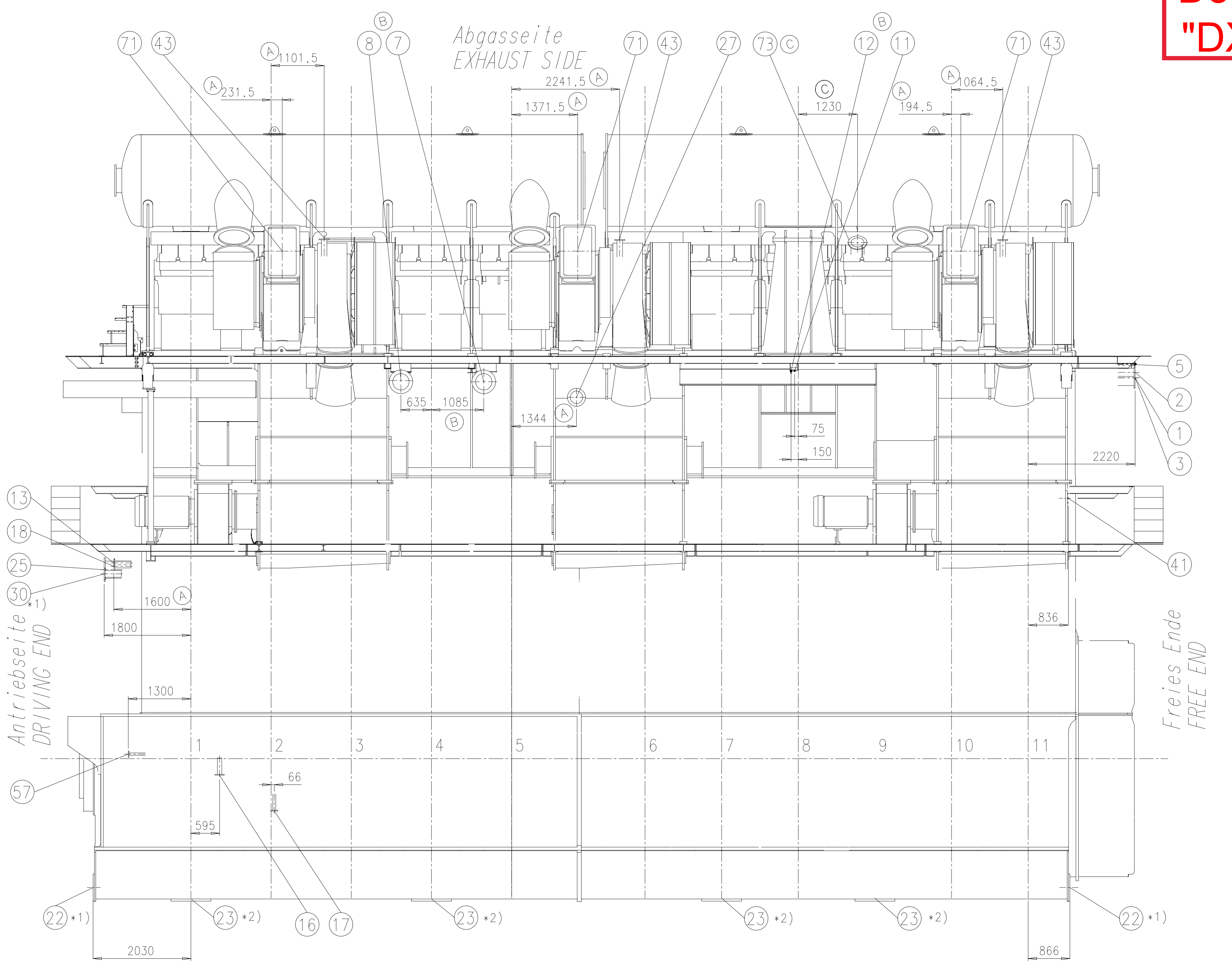


Download
"DXF file"



Gasaustritt-Stellung GAS OUTLET POSITION	x	y
0°	4000	10670
15°	4264	10635
30°	4510	10533
45°	4721	10371

- *1) Optionale Ausführung (wenn verlangt)
OPTIONAL EXECUTION (IF REQUIRED)
- *2) Standard Ausführung
STANDARD EXECUTION
Vorschlag, endgültige Position in Uebereinstimmung
mit Werft zu bestimmen
PROPOSAL TO DETERMINE FINAL POSITION
IN ACCORDANCE WITH SHIPYARD
- *3) Nur bei Ausführung mit separatem Brennstoff-
pumpen-Ölkreislauf
ONLY FOR EXECUTION WITH SEPARATE
LUBRICATING OIL FOR FUEL PUMPS

Alle Flanschanschlüsse am Motor sind mit Gegenflanschen
versehen (Blindflansch), ausgenommen der Anschluss fuer den
Gasaustritt am Turbolader. Die Blindflansche sind nach dem be-
treffenden Rohrdurchmesser des Werftanschlusses aufzubohren.
THE PIPE CONNECTIONS ON THE ENGINE ARE SUPPLIED
WITH MATING FLANGES (BLIND). WITH EXCEPTION OF THE TURBO-
CHARGER EXHAUST GAS OUTLET, BLIND FLANGES TO BE DRILLED
TO MATCH PIPE DIA SUPPLIED BY THE SHIPYARD.

Die Gewinde-Anschlüsse werden komplett geliefert
SREWED CONNECTIONS ARE SUPPLIED COMPLETE

3 x MET83MB

Internes TL Oelssystem
INTERNAL TC OIL SYSTEM

WinGD Wartsila Gas & Diesel		B-Code XXXXX Standard JIS		Plan Drawn H		
Modell Number	EAAD086592/25.04.2016	Produkt Number	EAAD08684/19.07.2016	Produkt Number	EAAD08678/30.07.2018	
Wartsila		Wartsila		Wartsila		
Units		mm	kg	NX	Basic Material	
Scale		1:50	Size	A0	Page	1/2
Material		PAAD0114673				
Drawing		DAAD037854				
Rev.		C				

DATE: 15.07.2016
DESIGNER: rsx004
CHECKED: 08.04.2013
APPROVED: 08.04.2013
PROJECT: w11x92
PIPE CONNECTION PLAN
Rohranschlussplan
Net Weight: 0.001

[illegible]

WinGD-11X92_Pipe-Connection-Plan

TRACK CHANGES

DATE	SUBJECT	DESCRIPTION
2018-02-26	DRAWING SET	First web upload
2021-05-17	PAAD114673	Revised Pipe connection plan for Turbocharger type 3 x MHI MET83MB has been updated.

DISCLAIMER

© Copyright by Winterthur Gas & Diesel Ltd.

All rights reserved. No part of this document may be reproduced or copied in any form or by any means (electronic, mechanical, graphic, photocopying, recording, taping or other information retrieval systems) without the prior written permission of the copyright owner.

THIS PUBLICATION IS DESIGNED TO PROVIDE AN ACCURATE AND AUTHORITATIVE INFORMATION WITH REGARD TO THE SUBJECT-MATTER COVERED AS WAS AVAILABLE AT THE TIME OF PRINTING. HOWEVER, THE PUBLICATION DEALS WITH COMPLICATED TECHNICAL MATTERS SUITED ONLY FOR SPECIALISTS IN THE AREA, AND THE DESIGN OF THE SUBJECT-PRODUCTS IS SUBJECT TO REGULAR IMPROVEMENTS, MODIFICATIONS AND CHANGES. CONSEQUENTLY, THE PUBLISHER AND COPYRIGHT OWNER OF THIS PUBLICATION CAN NOT ACCEPT ANY RESPONSIBILITY OR LIABILITY FOR ANY EVENTUAL ERRORS OR OMISSIONS IN THIS BOOKLET OR FOR DISCREPANCIES ARISING FROM THE FEATURES OF ANY ACTUAL ITEM IN THE RESPECTIVE PRODUCT BEING DIFFERENT FROM THOSE SHOWN IN THIS PUBLICATION. THE PUBLISHER AND COPYRIGHT OWNER SHALL UNDER NO CIRCUMSTANCES BE HELD LIABLE FOR ANY FINANCIAL CONSEQUENTIAL DAMAGES OR OTHER LOSS, OR ANY OTHER DAMAGE OR INJURY, SUFFERED BY ANY PARTY MAKING USE OF THIS PUBLICATION OR THE INFORMATION CONTAINED HEREIN.