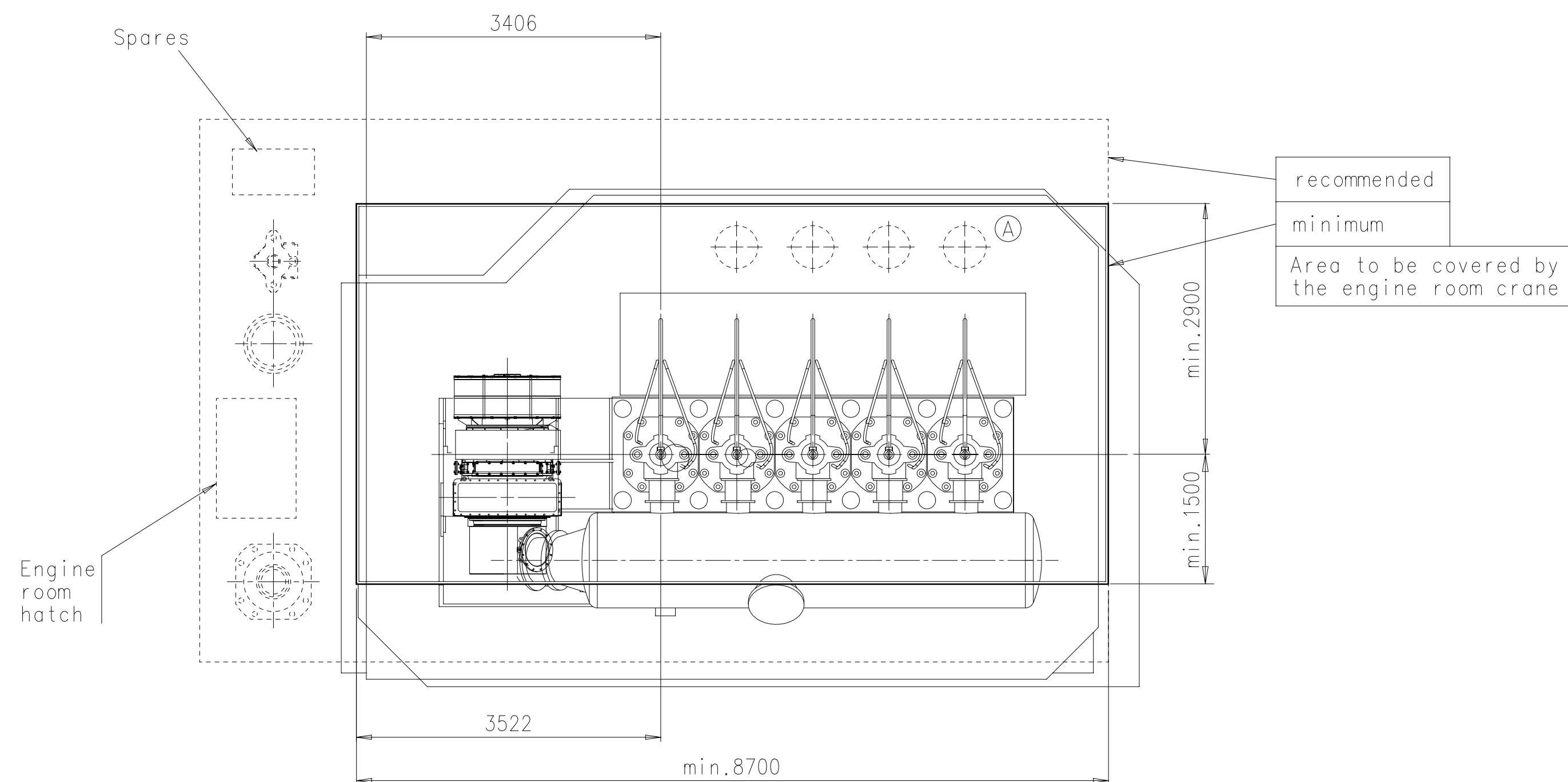
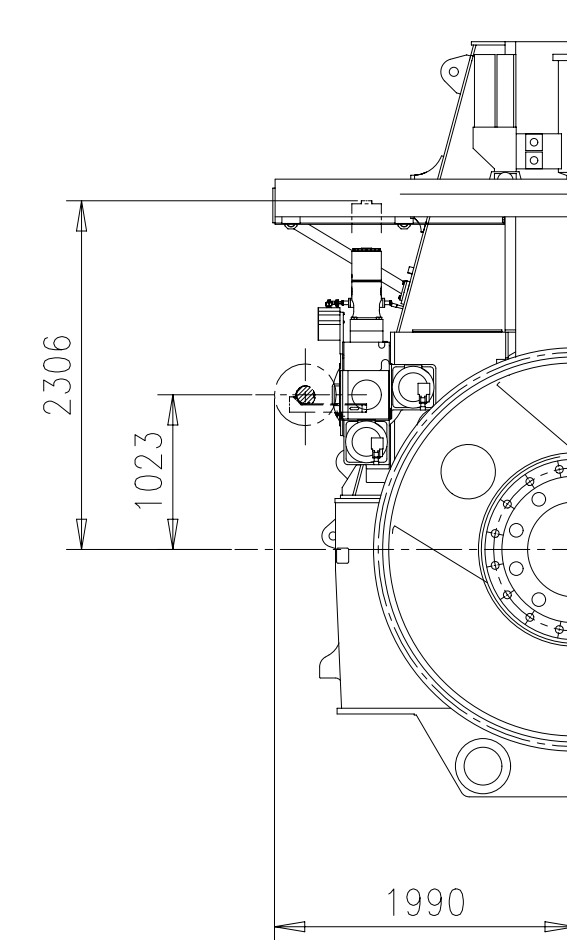
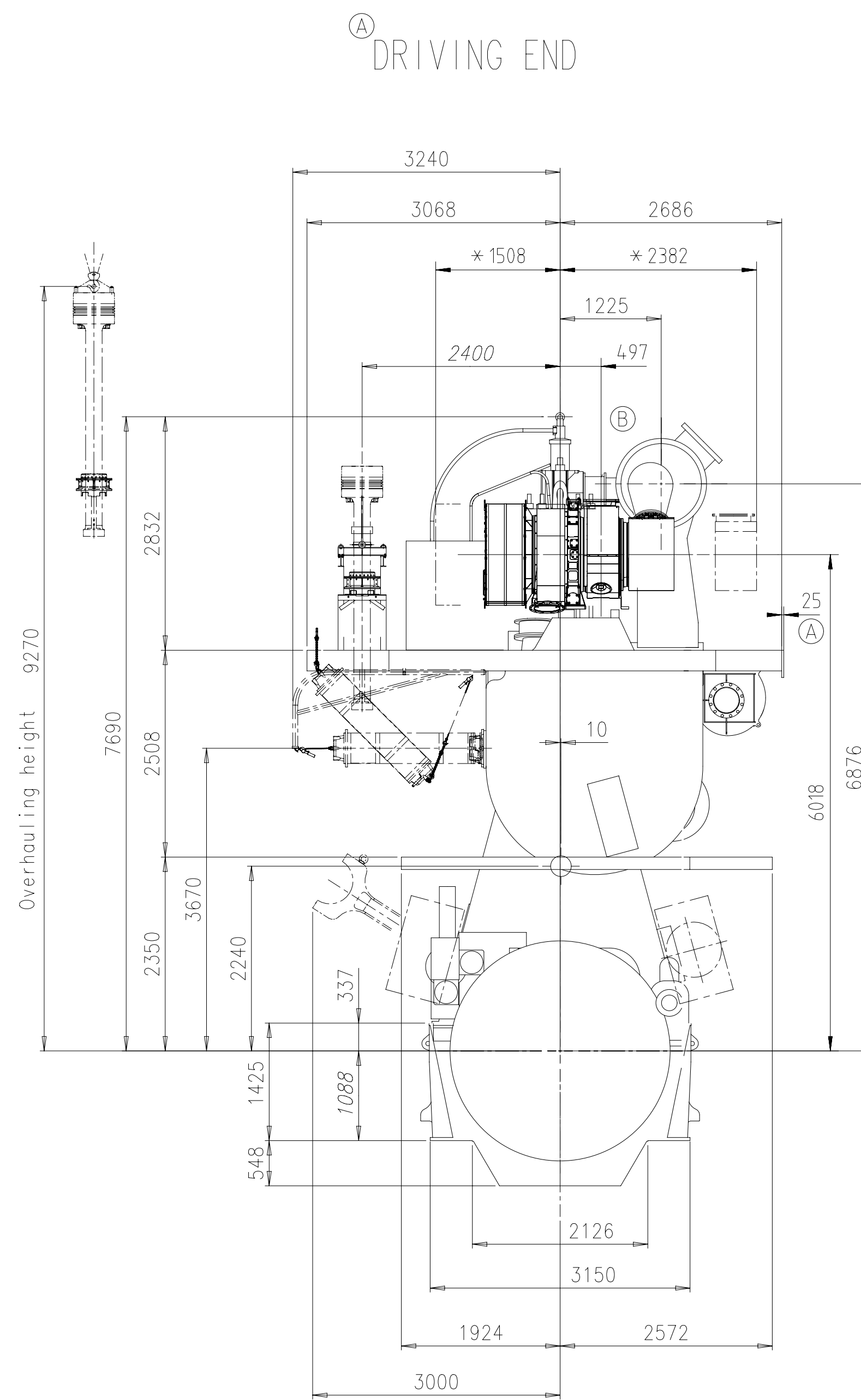
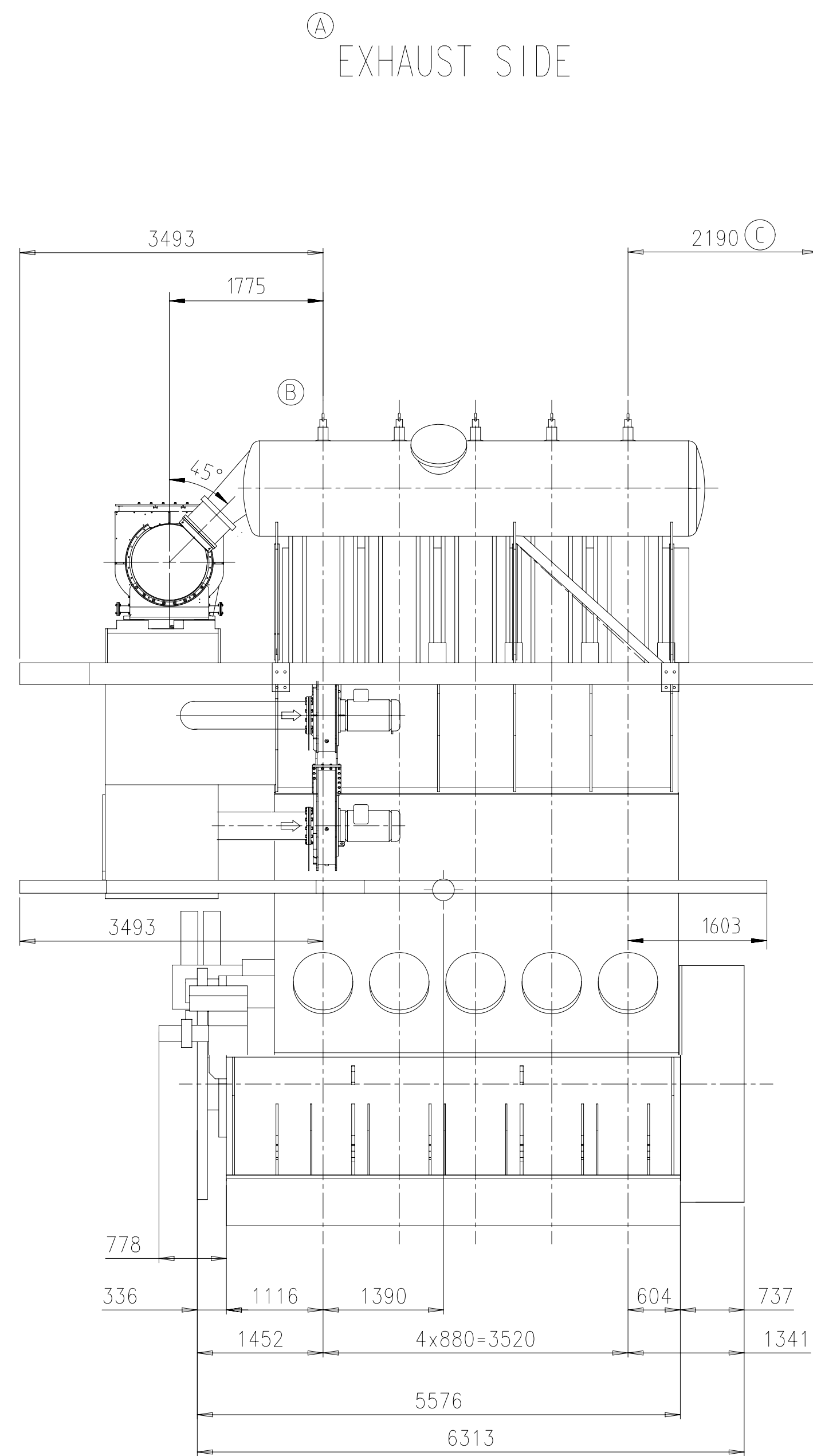




DOWNLOAD  
"DXF FILE"



TURBOCHARGER 1x MET48 MB



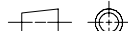
\* Platz fuer Demontage  
SPACE FOR REMOVAL

ⓑ

Gewicht ohne Wasser und Oel= 200 t  
WEIGHT WITHOUT WATER AND OIL

PLEASE NOTE:

MAIN STAIRS WITH MORE THAN 4 STEPS ONLY  
IN LONGITUDINAL DIRECTION OF THE ENGINE.

Free space for file:	<div>Q-Code XXXXXX ISO: JIS</div>										Main Dwg.  H
Modif.	(A)	EAAD091148	06.03.2020	(B)	EAAD096542	27.04.2021	(C)				
		Number	Drawn date		Number	Drawn date		Number	Drawn date		Number
<div><div><div>WIN GD</div><div>Winterthur Gas &amp; Diesel</div></div><div>Product SRT-flex50DF</div><div>ENGINE OUTLINE VIEW  Motoransichten</div></div>											
Units	mm kg	NX			Basic Material					Net Weight 0.001	
Mode	03.07.2019 Abraham Dasari				Scale	1:50		Size	A1	Page	1/1
Chkd	22.08.2019 hdo002 Dörre				Design Group		0812		Drawing ID	DAAD118434	Rev. B
Appd	22.08.2019 sth017 Thalmann										

DIMENSIONS ONLY FOR REFERENCE  
THIS OUTLINE DRAWING CAN NOT BE USED FOR FINAL DESIGN.  
PLEASE TAKE CORRESPONDING DESIGN GROUP

	SURFACE PROTECTION SEE GROUP 0344
	TOLERANCING PRINCIPLE ISO8015
	GENERAL TOLERANCES ACCORDING TO ISO2768-mK

Made	03.07.2019	Abraham Dasari	Scale	1:50	Size	A1	Page	1/1	Material	PAAD332628
Chkd	22.08.2019	hdo002 Dörre	Design Group	0812	Drawing ID	DAAD118434				Rev. B
Appd	22.08.2019	sth017 Thalmann								

## WinGD-5RT-flex50DF \_Engine-Outline-View

### TRACK CHANGES

DATE	SUBJECT	DESCRIPTION
2018-02-26	DRAWING SET	First web upload
2019-11-20	DAAD118434	New Engine Outline View for Turbocharger type 1xMET 48MB has been added.
2020-09-07	DAAD049267	Revised Engine Outline View for Turbocharger type 1xA165 has been updated.
2021-05-12	DAAD049267 DAAD118434	Revised Engine Outline View for Turbocharger type 1xA165 & 1xMET 48MB have been updated.

### DISCLAIMER

© Copyright by Winterthur Gas & Diesel Ltd.

All rights reserved. No part of this document may be reproduced or copied in any form or by any means (electronic, mechanical, graphic, photocopying, recording, taping or other information retrieval systems) without the prior written permission of the copyright owner.

THIS PUBLICATION IS DESIGNED TO PROVIDE AN ACCURATE AND AUTHORITATIVE INFORMATION WITH REGARD TO THE SUBJECT-MATTER COVERED AS WAS AVAILABLE AT THE TIME OF PRINTING. HOWEVER, THE PUBLICATION DEALS WITH COMPLICATED TECHNICAL MATTERS SUITED ONLY FOR SPECIALISTS IN THE AREA, AND THE DESIGN OF THE SUBJECT-PRODUCTS IS SUBJECT TO REGULAR IMPROVEMENTS, MODIFICATIONS AND CHANGES. CONSEQUENTLY, THE PUBLISHER AND COPYRIGHT OWNER OF THIS PUBLICATION CAN NOT ACCEPT ANY RESPONSIBILITY OR LIABILITY FOR ANY EVENTUAL ERRORS OR OMISSIONS IN THIS BOOKLET OR FOR DISCREPANCIES ARISING FROM THE FEATURES OF ANY ACTUAL ITEM IN THE RESPECTIVE PRODUCT BEING DIFFERENT FROM THOSE SHOWN IN THIS PUBLICATION. THE PUBLISHER AND COPYRIGHT OWNER SHALL UNDER NO CIRCUMSTANCES BE HELD LIABLE FOR ANY FINANCIAL CONSEQUENTIAL DAMAGES OR OTHER LOSS, OR ANY OTHER DAMAGE OR INJURY, SUFFERED BY ANY PARTY MAKING USE OF THIS PUBLICATION OR THE INFORMATION CONTAINED HEREIN.