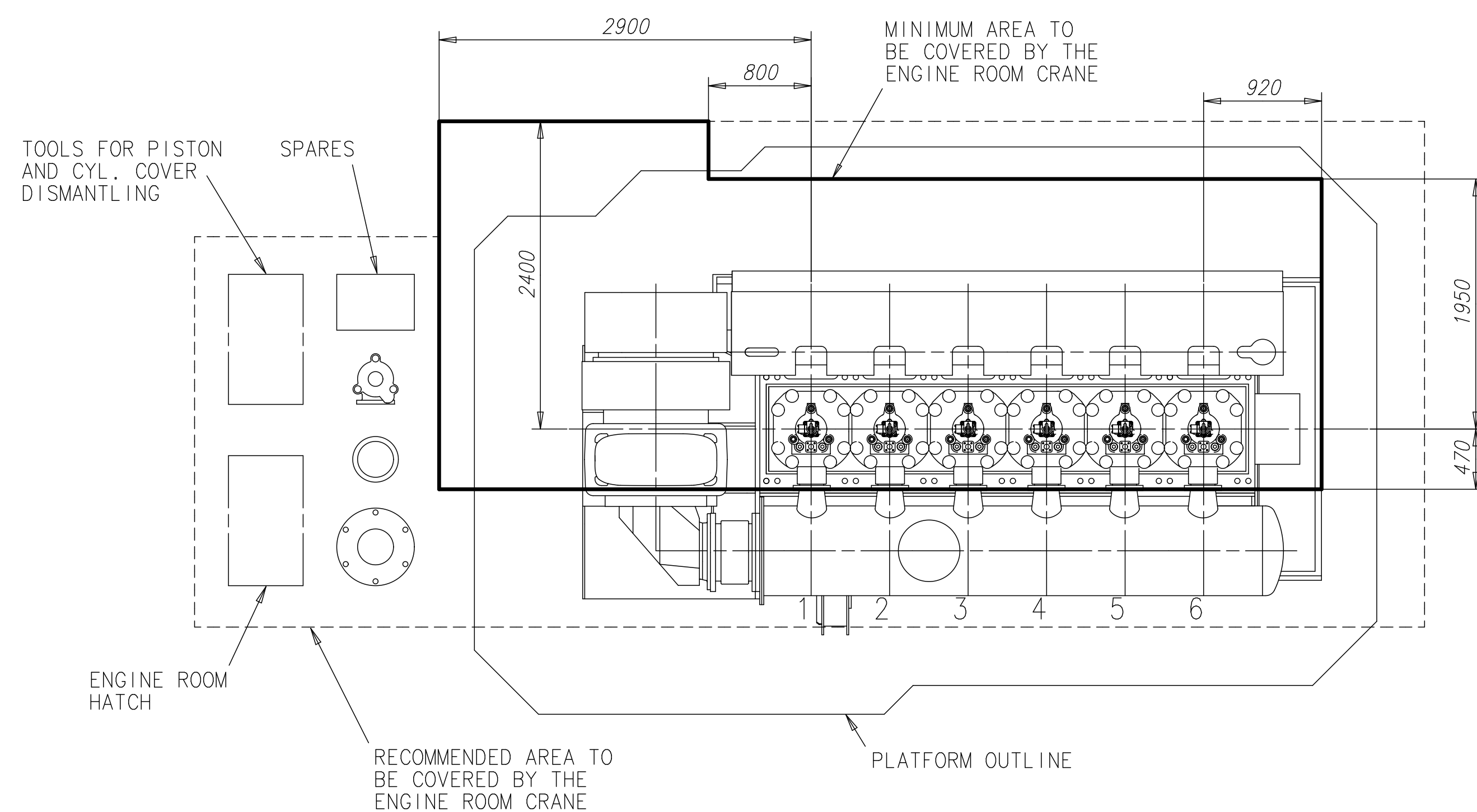
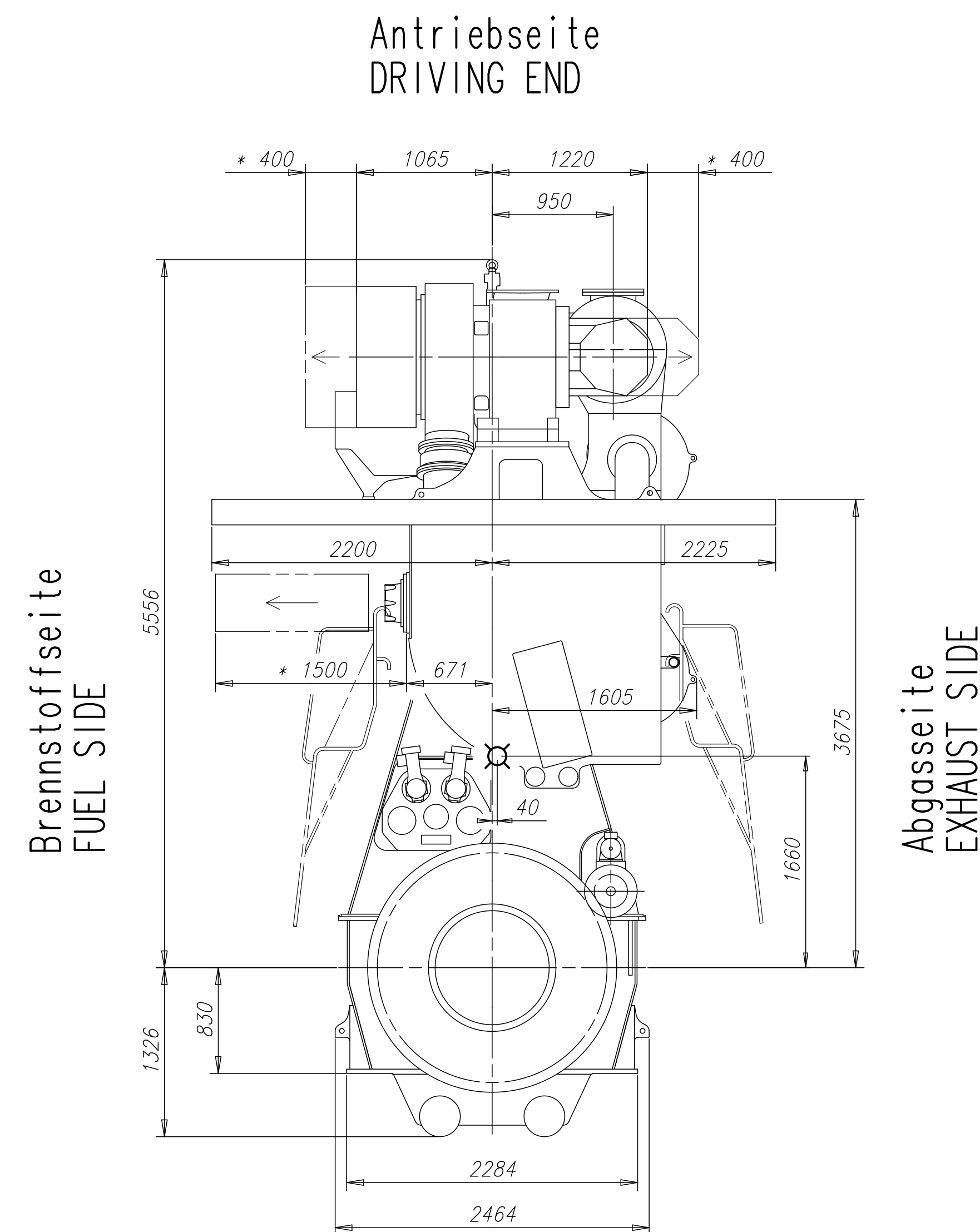
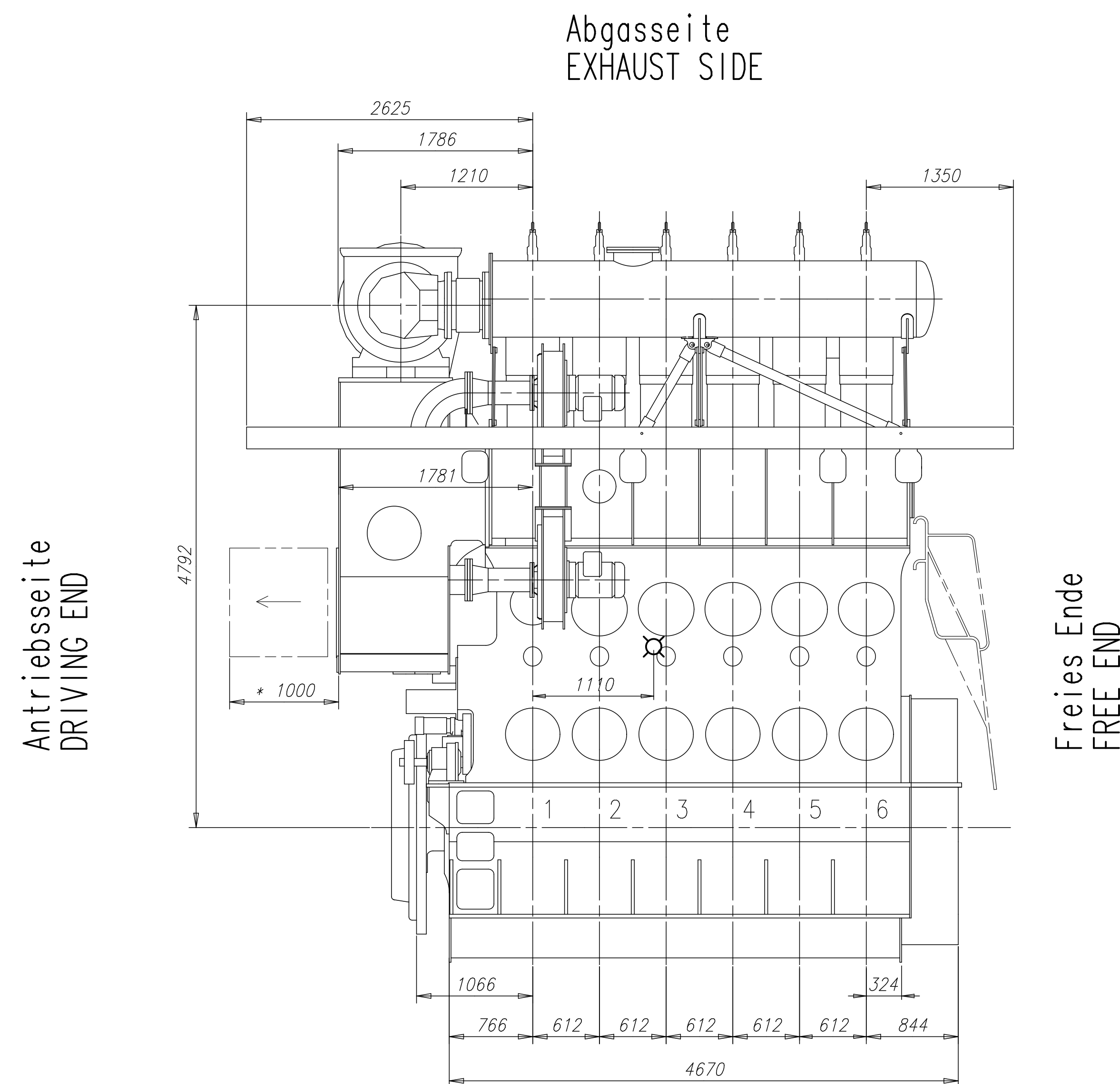


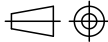
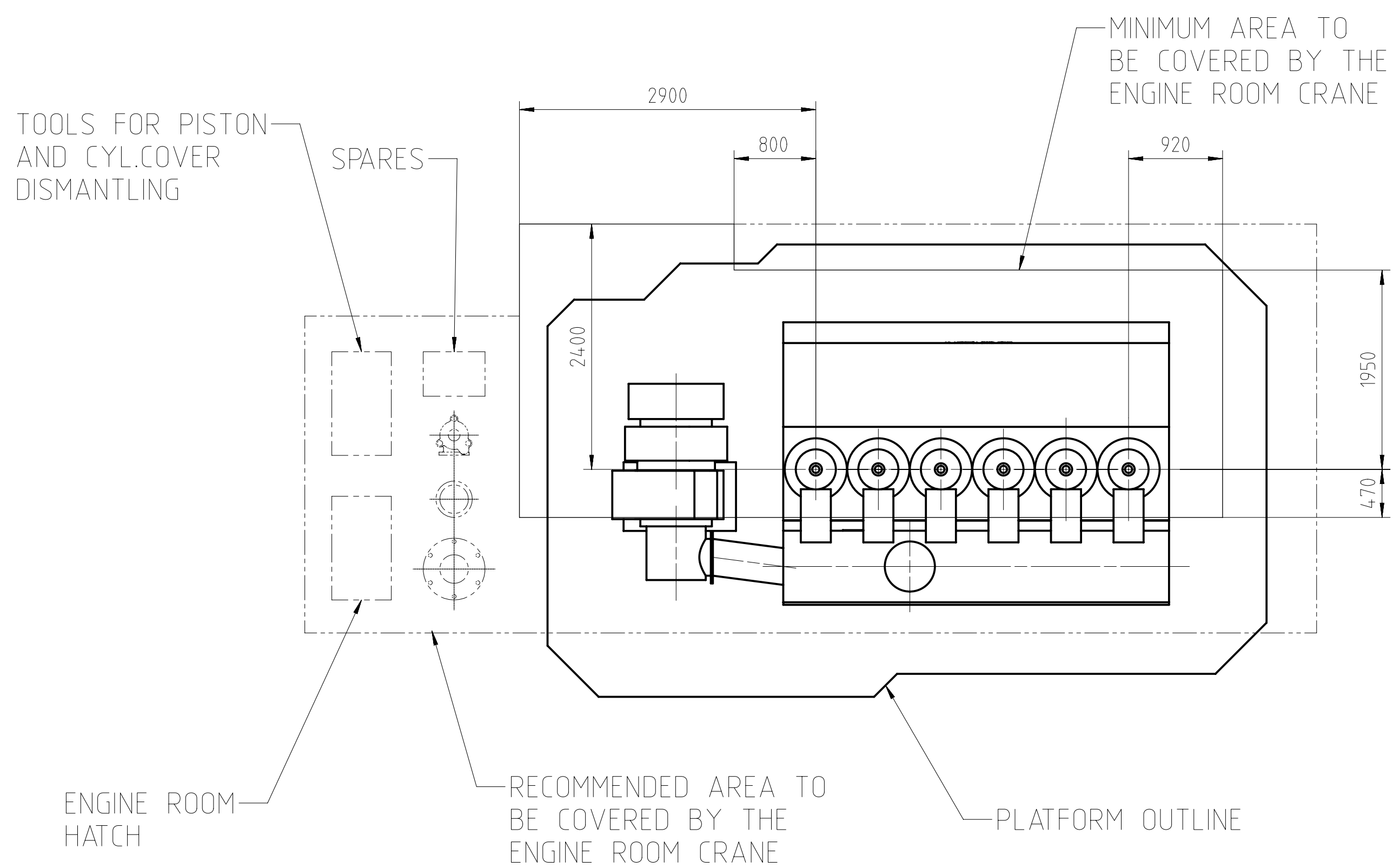
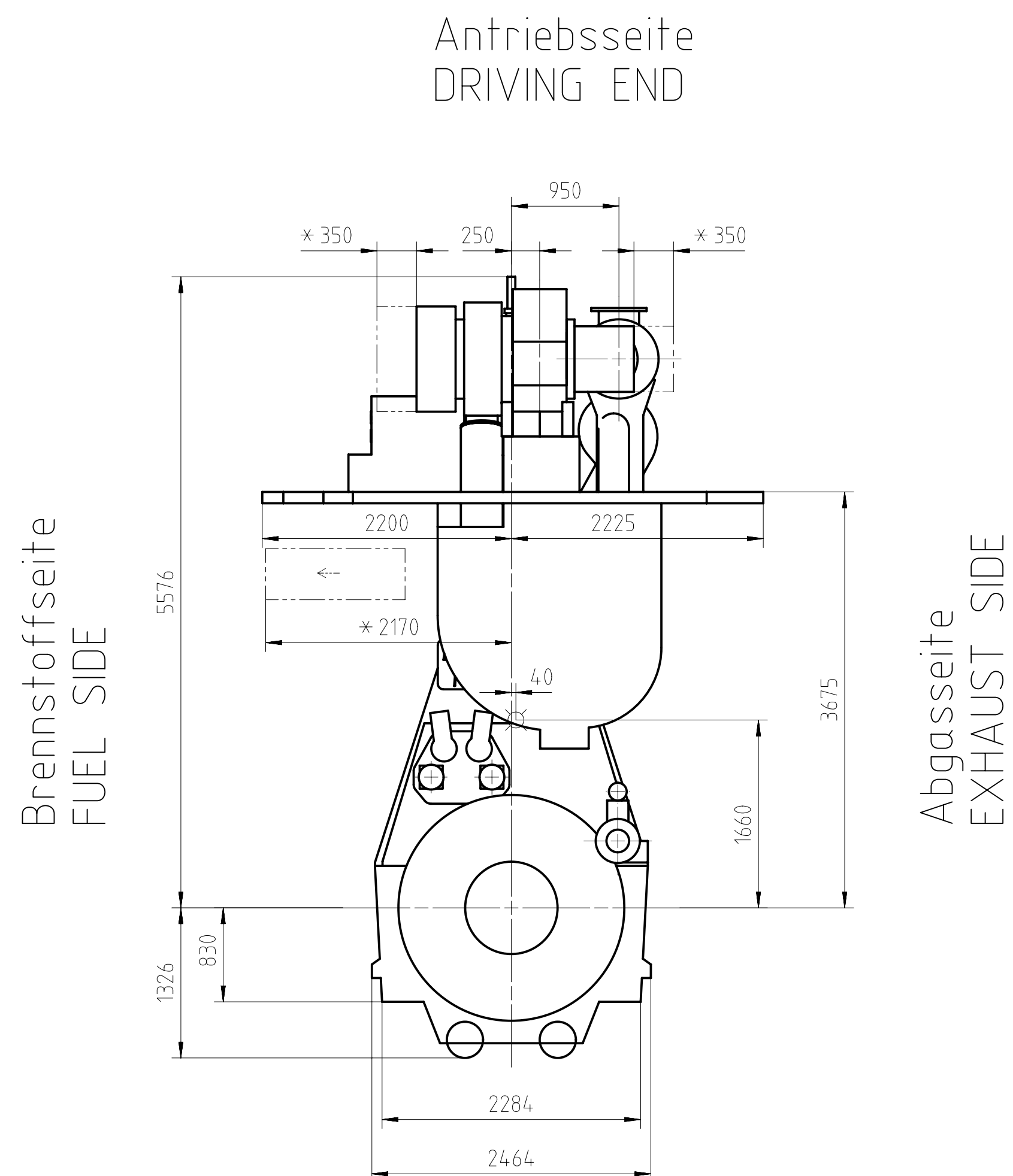
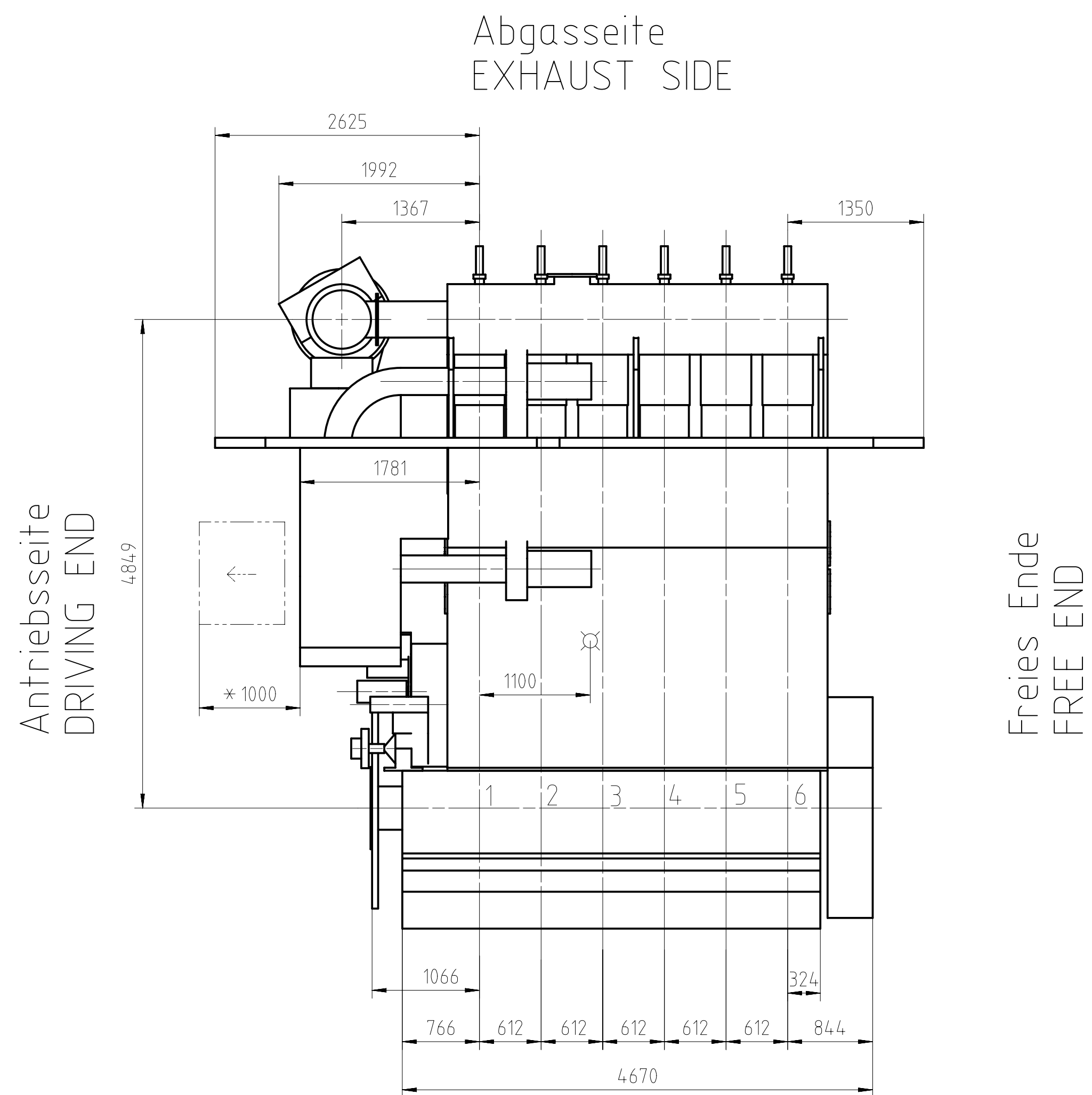


Copyright Wintersmith Gas & Diesel Ltd. All rights reserved. No further reproduction of the drawing the excellent reproduction and honour these rights. Neither the whole nor any part of this drawing may be used in any way for construction, fabrication, marketing or any other purpose nor copied in any way nor made accessible to third parties without the explicit written consent of Wintersmith Gas & Diesel Ltd.




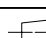
Net Weight 0.001		<div>  ca. Schwerpunkt APPROX. CENTRE OF GRAVITY </div> <div> Gewicht ohne Wasser und Öl = 84 t WEIGHT WITHOUT WATER AND OIL </div> <div> * Platz fuer Demontage SPACE FOR REMOVAL </div>									
Quantity 1		TURBOCHARGER A165-L									
PER ENGINE		001	PAAD218274	DISMANTLING DIMENSIONS				DAAD075266			0.001
		SEQ NO	Material ID	Dimension/Occ. Dimension				Standard or Drawing	Basic Material Material Standard		Weight GR./NET
PAAD239396		Modif.							Q-Code XXXXX	Main Drw.	
									Standard ISO JIS		H
Material ID			Number	Drawn date		Number	Drawn date		Number	Drawn date	Number
 Winterthur Gas & Diesel			Product W6X35-B				ENGINE OUTLINE VIEW Motoransichten				
Units mm kg		IDE			Basic Material					Net Weight	
UP 0344	Mode	12.09.2016 ihe003 Ivan HERCEG		Scale	1:1		Size	A1	Page	1/1	Material ID
015	Chkd	28.11.2016 hdo002 Dörre		Design Group	0812		Drawing ID	DAAD081945			Rev.
NG TO ISO2768-mK		Appd	29.11.2016 bha009 Haag								

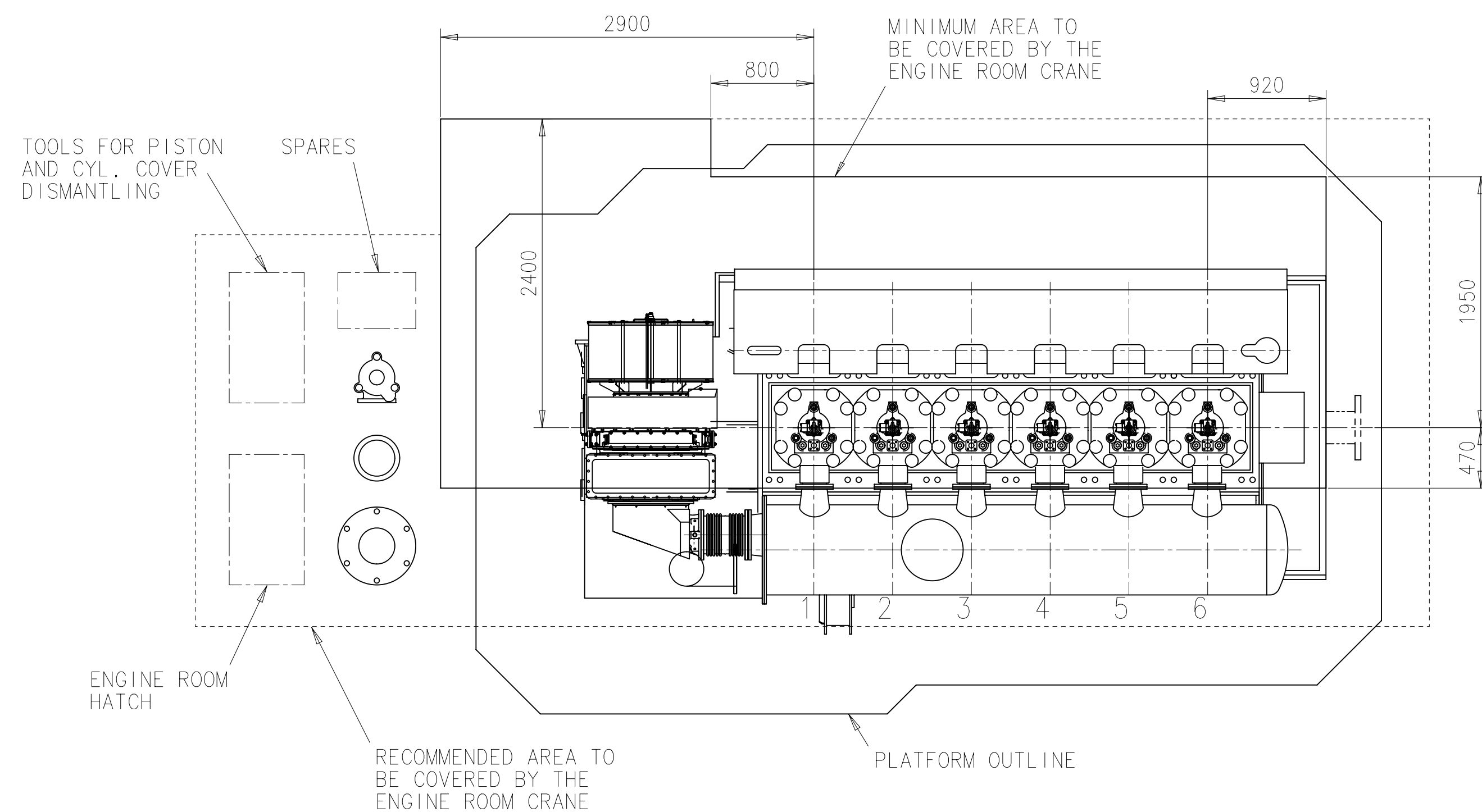
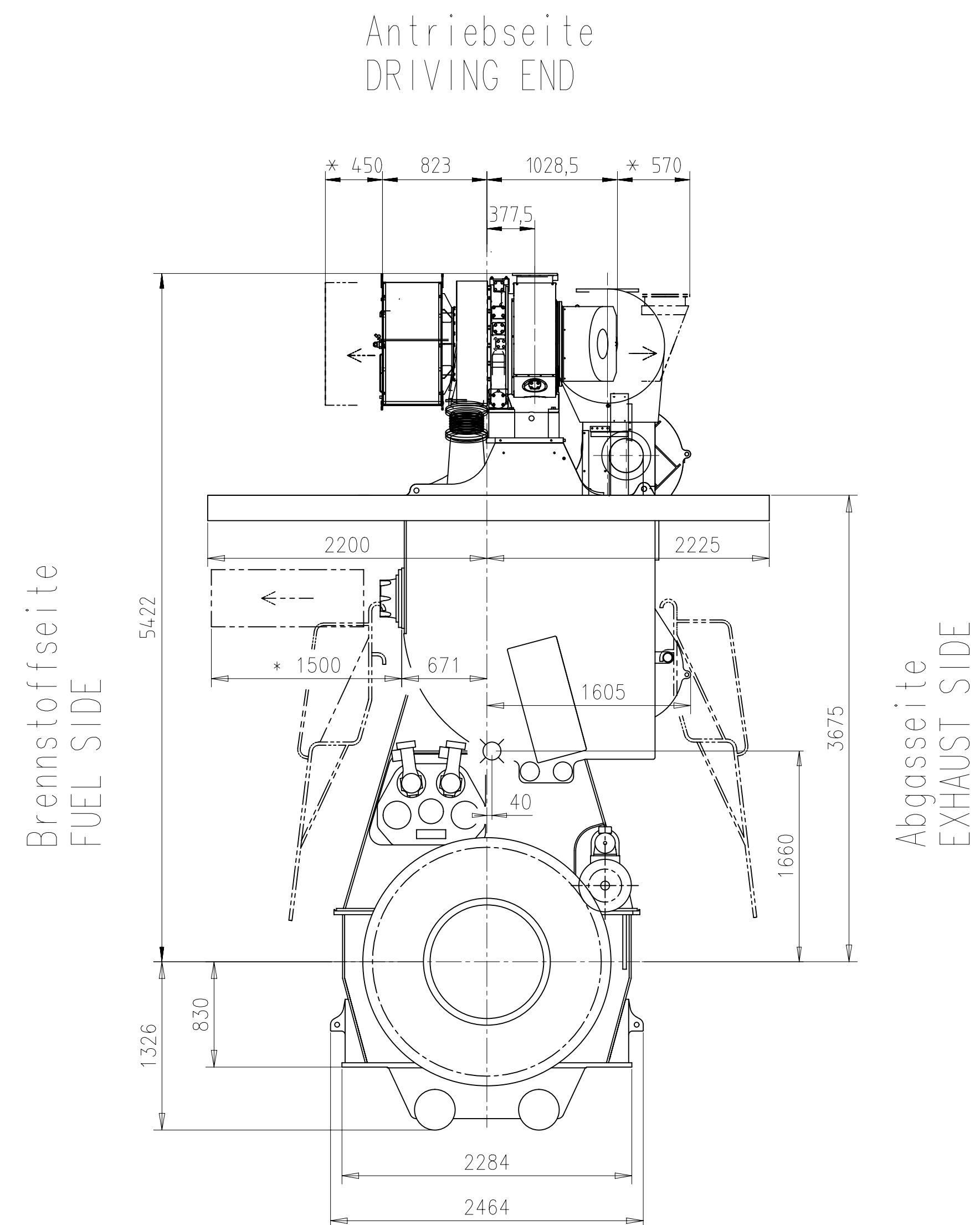
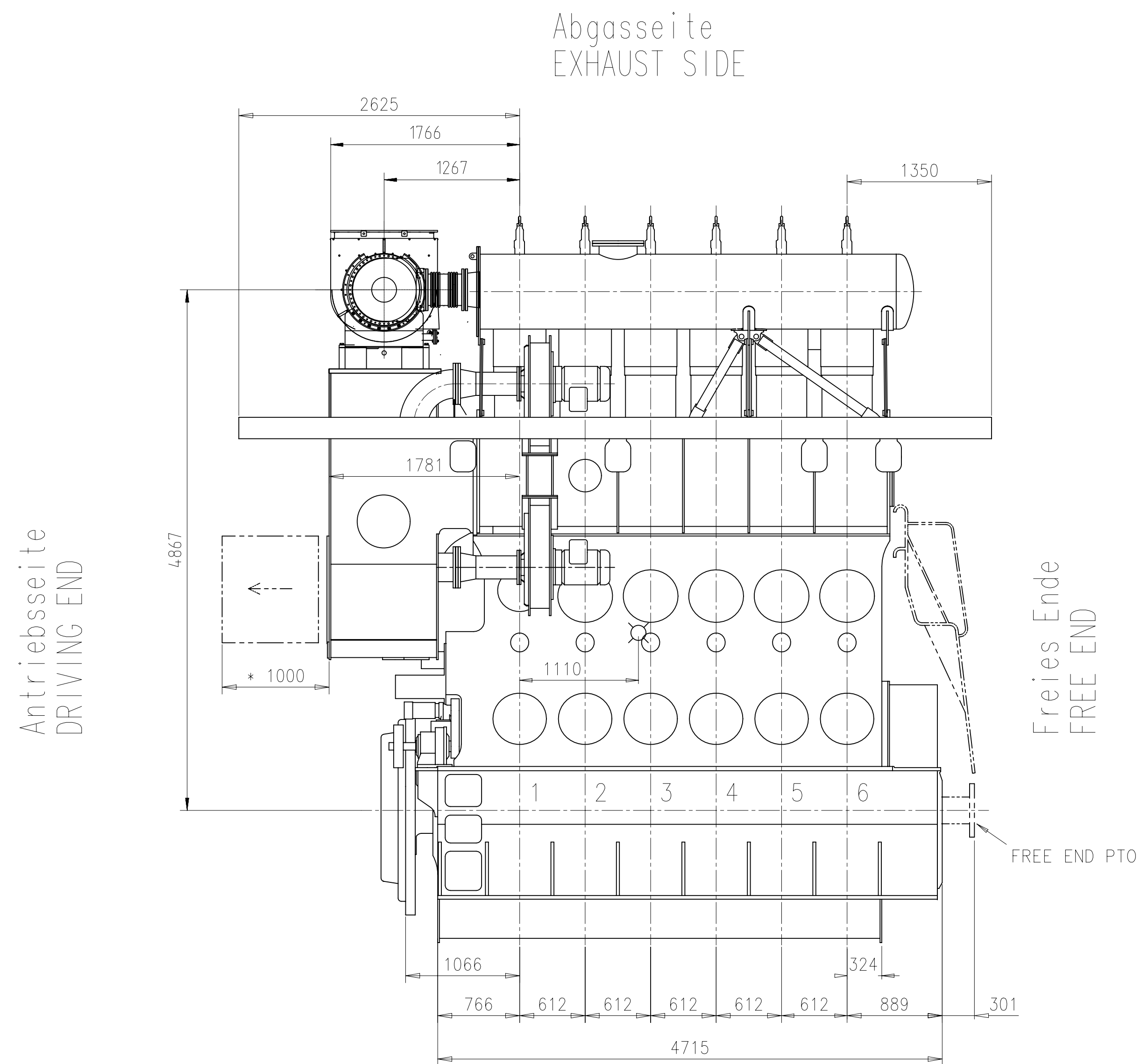


☉ ca. Schwerpunkt
APPROX. CENTRE OF GRAVITY



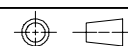
Gewicht ohne Wasser und Oel= 84 t
WEIGHT WITHOUT WATER AND OIL

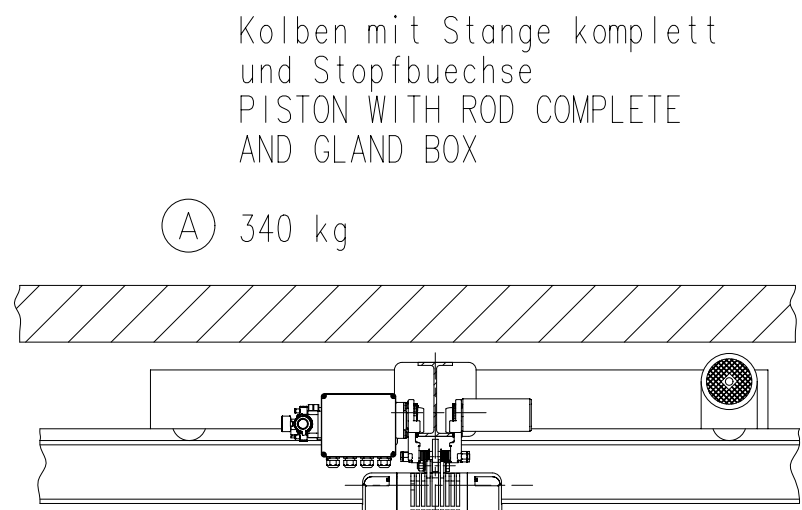
* Platz fuer Demontage
SPACE FOR REMOVAL

Net Weight		TURBOCHARGER A255-L										
0,001												
1	007	PAAD218274		DISMANTLING DIMENSIONS				DAAD075266		0,001		
Quantity	SEQ NO	Material ID		Material Name		Dimension, Occ		Standard or Drawing		Basic Material Material Standard		Weight GR./NET
ENGINE	PAAD364708	Free space for list	Q-Code XXXXXX Standard ISO; JIS							Main Drw. H		
Material	Modif	Number	Drawn date	Number	Drawn date	Number	Drawn date	Number	Drawn date	Number	Drawn date	
		Product 6X35-B		ENGINE OUTLINE VIEW								
		 Winturthur Gas & Diesel		Motoransichten								
Units		mm kg		NX				Basic Material		Net Weight		
Mode	29.10.2020		fch101		Chen		Scale 1:40		Size A1	Page 1/1	Material ID	
Chkd	03.11.2020		sch101		Chen		Design Group		Drawing ID	DAAD134820	Rev. -	
Appd	04.11.2020		r1002		Flegans		0812					
02768-mk												



DIMENSIONS ONLY FOR REFERENCE
THIS OUTLINE DRAWING CAN NOT BE USED FOR FINAL DESIGN
PLEASE TAKE CORRESPONDING DESING GROUP

<div> ca. Schwerpunkt APPROX. CENTRE OF GRAVITY</div> <div>Gewicht ohne Wasser und Öl= 84 t WEIGHT WITHOUT WATER AND OIL</div> <div>* Platz fuer Demontage SPACE FOR REMOVAL</div> <div>TURBOCHARGER MET37MB</div>															
NetWeight 0,001															
1	001	PAAD218274	DISMANTLING DIMENSIONS				DAAD075266				0,001				
Quantity PER ENGINE	SEQ NO	Material ID	Material Name				Standard or Drawing	Basic Material Material Standard		Weight GR./NET					
PAAD322312	Free space for lift							Q-Code XXXXXX	Main Dw.		H				
								Standard ISO; JIS							
Material ID		Number	Drawn date	Number	Drawn date	Number	Drawn date	Number	Drawn date						
<div> WINGD Winterthur Gas & Diesel</div>			Product 6X35-B			ENGINE OUTLINE VIEW Motoransichten									
Units		mm kg	NX				Basic Material		Net Weight						
0344	Made	15.03.2019		Jaimin Prajapati		Scale		1:33		Size	A1	Page	1/1	Material ID	
	Chkd	28.05.2019		ihe003 Herczeg		Design Group				Drawing ID	DAAD113354				
	Appd	29.05.2019		hdo002 Dörre											
TO 0342168-m-k															
Rev.														-	



Zylindereinsatz mit Wasserleitmantel
CYLINDER LINER WITH WATER GUIDE JACKET

Gewicht ohne Hebevorrichtung:
WEIGHT WITHOUT LIFING TOOL:

(A) 795 kg

Zylinderdeckel mit Auslassventil
komplett und Wasserleitmantel
CYLINDER COVER WITH EXHAUST
VALVE COMPLETE AND WATER
GUIDE JACKET

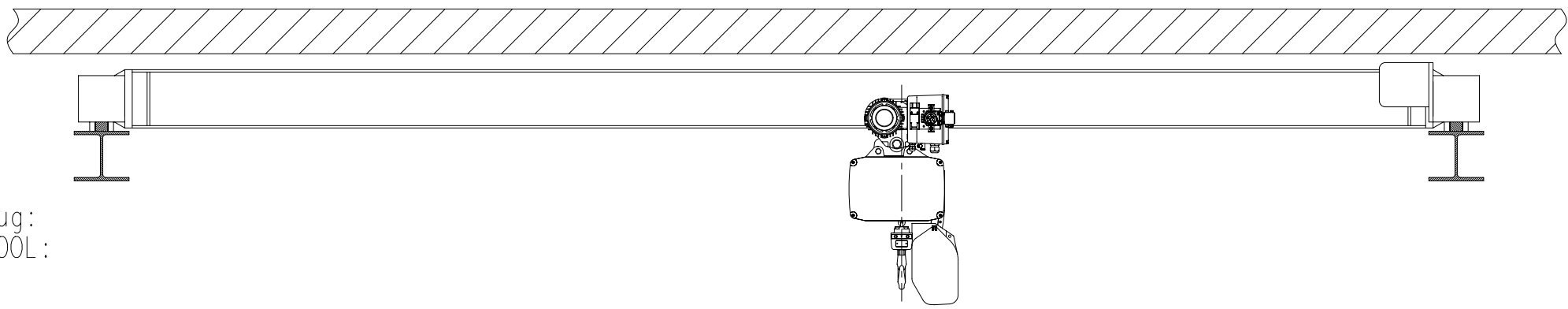
Gewicht ohne Hebewerkzeug:
Weight WITHOUT LIFING TOOL:

(A) 535 kg

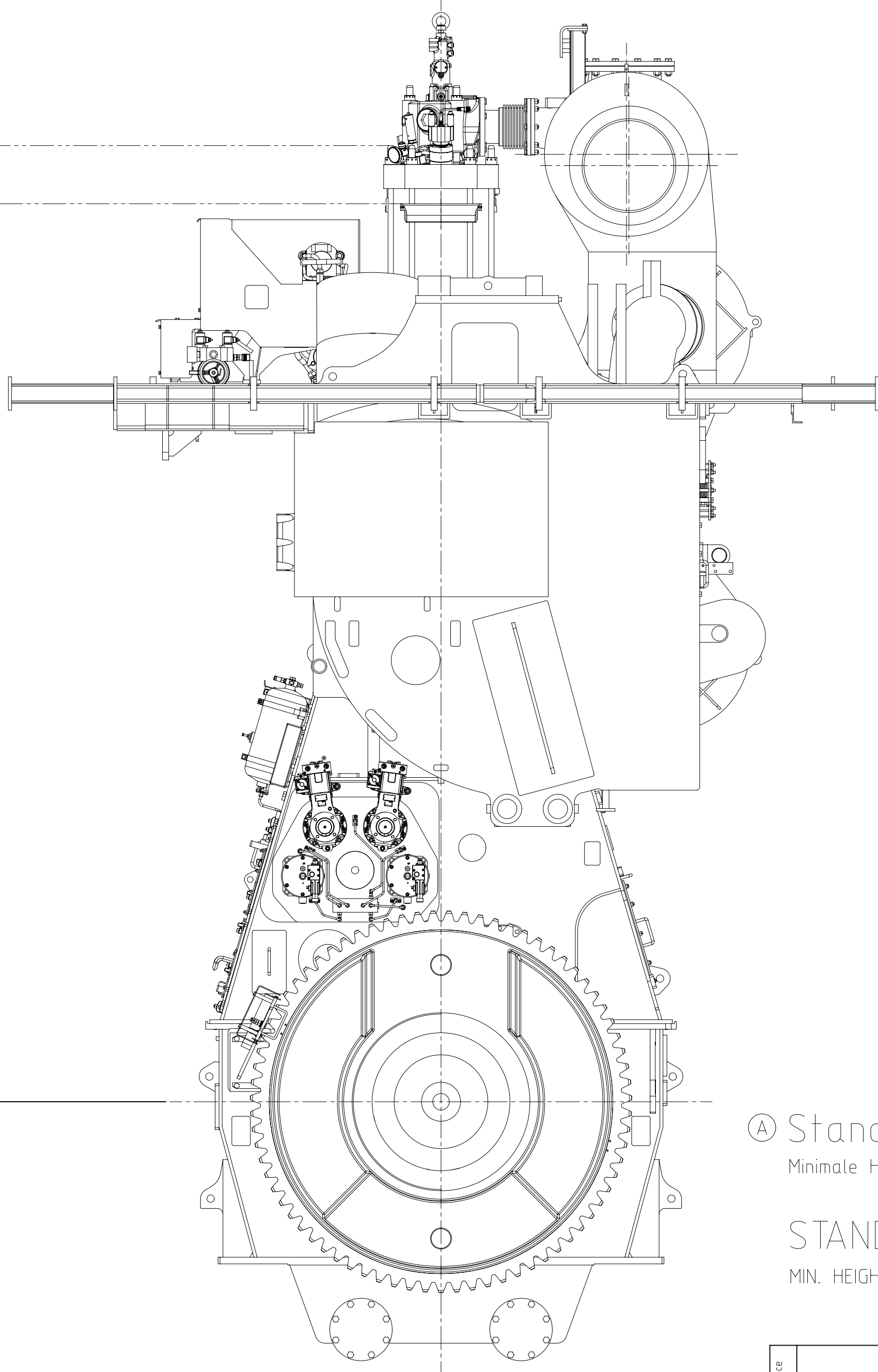
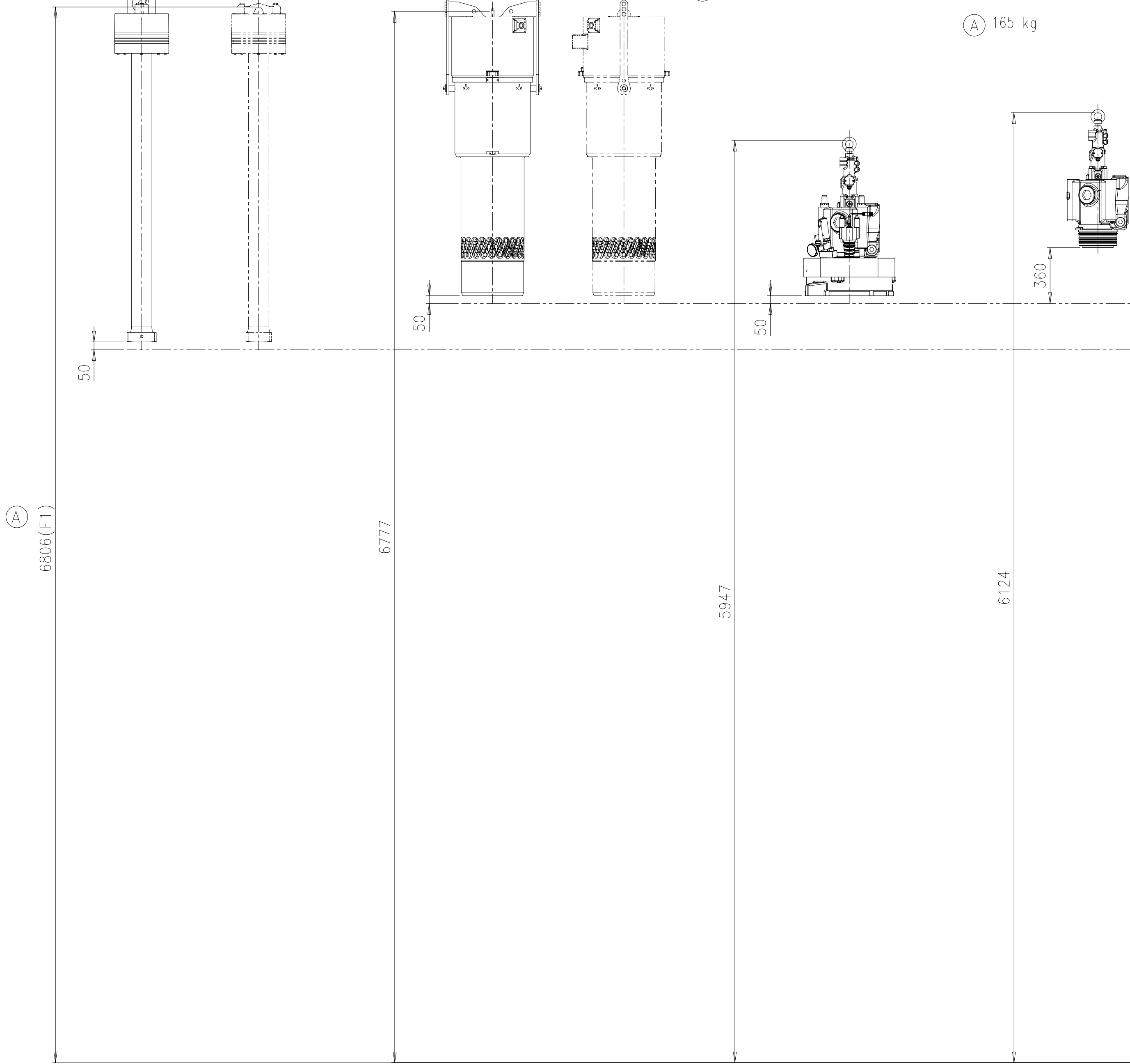
Auslassventil komplett
EXHAUST VALVE COMPLETE

Gewicht ohne Hebewerkzeug:
Weight WITHOUT LIFING TOOL:

(A) 165 kg



Krankapazitaet min.
CRANE CAPACITY MIN. 950 kg (A)



(A) Kompatibilitaetshinweis zum Kranhaken

Die Hebewerkzeuge zu diesem Motor
sind kompatibel mit folgenden
Kranhaken:
DIN 15401: Form RSN, Hakennummer 0.25 bis 0.5

COMPATIBILITY NOTE FOR CRANE HOOK

THE LIFTING TOOLS FOR THIS ENGINE
ARE COMPATIBLE WITH FOLLOWING
CRANE HOOK:
DIN 15401: SHAPE RSN, HOOK NUMBER 0.25 TO 0.5

(A) Standardausbau

Minimale Hoehe fuer den vertikalen Ausbau: F1

STANDARD DISMANTLING

MIN. HEIGHT FOR VERTICAL REMOVAL: F1

Free space for l.c.		D-Code XXXXX		Main Drw.	
Modif.	(A)	EAAD091495	02.04.2020		
Number		Drawn date		Number	Drawn date
Product X35-B		DISMANTLING DIMENSIONS		Ausbaumasse	
Units	mm kg	NX	Basic Material	Net Weight 0,001	
Made	22.01.2016	mda006	Dacic	Scale	1:20
Chkd	28.01.2016	abo011	Bösiger	Design Group	
Appd	29.01.2016	bha009	Haag	Drawing ID	DAAD075266
SURFACE PROTECTION SEE GROUP 0344		Size		Page	1/1
TOLERANCING PRINCIPLE ISO8015		Material ID		PAAD218274	
GENERAL TOLERANCES ACCORDING TO ISO2768-mK		Rev.		A	

Download
"DXF file"

WinGD-6X35-B_Engine-outline-views

TRACK CHANGES

DATE	SUBJECT	DESCRIPTION
2018-01-30	DRAWING SET	First web upload
2020-08-26	DAAD113354	Engine Outline views for Turbocharger type 1xMET37MB has been added.
2020-07-20	DAAD075266	Revised Dismantling Dimensions drawing has been updated.
2021-05-19	PAAD364708	Revised Engine Outline views for Turbocharger type 1XA255-L has been added.

DISCLAIMER

© Copyright by Winterthur Gas & Diesel Ltd.

All rights reserved. No part of this document may be reproduced or copied in any form or by any means (electronic, mechanical, graphic, photocopying, recording, taping or other information retrieval systems) without the prior written permission of the copyright owner.

THIS PUBLICATION IS DESIGNED TO PROVIDE AN ACCURATE AND AUTHORITATIVE INFORMATION WITH REGARD TO THE SUBJECT-MATTER COVERED AS WAS AVAILABLE AT THE TIME OF PRINTING. HOWEVER, THE PUBLICATION DEALS WITH COMPLICATED TECHNICAL MATTERS SUITED ONLY FOR SPECIALISTS IN THE AREA, AND THE DESIGN OF THE SUBJECT-PRODUCTS IS SUBJECT TO REGULAR IMPROVEMENTS, MODIFICATIONS AND CHANGES. CONSEQUENTLY, THE PUBLISHER AND COPYRIGHT OWNER OF THIS PUBLICATION CAN NOT ACCEPT ANY RESPONSIBILITY OR LIABILITY FOR ANY EVENTUAL ERRORS OR OMISSIONS IN THIS BOOKLET OR FOR DISCREPANCIES ARISING FROM THE FEATURES OF ANY ACTUAL ITEM IN THE RESPECTIVE PRODUCT BEING DIFFERENT FROM THOSE SHOWN IN THIS PUBLICATION. THE PUBLISHER AND COPYRIGHT OWNER SHALL UNDER NO CIRCUMSTANCES BE HELD LIABLE FOR ANY FINANCIAL CONSEQUENTIAL DAMAGES OR OTHER LOSS, OR ANY OTHER DAMAGE OR INJURY, SUFFERED BY ANY PARTY MAKING USE OF THIS PUBLICATION OR THE INFORMATION CONTAINED HEREIN.