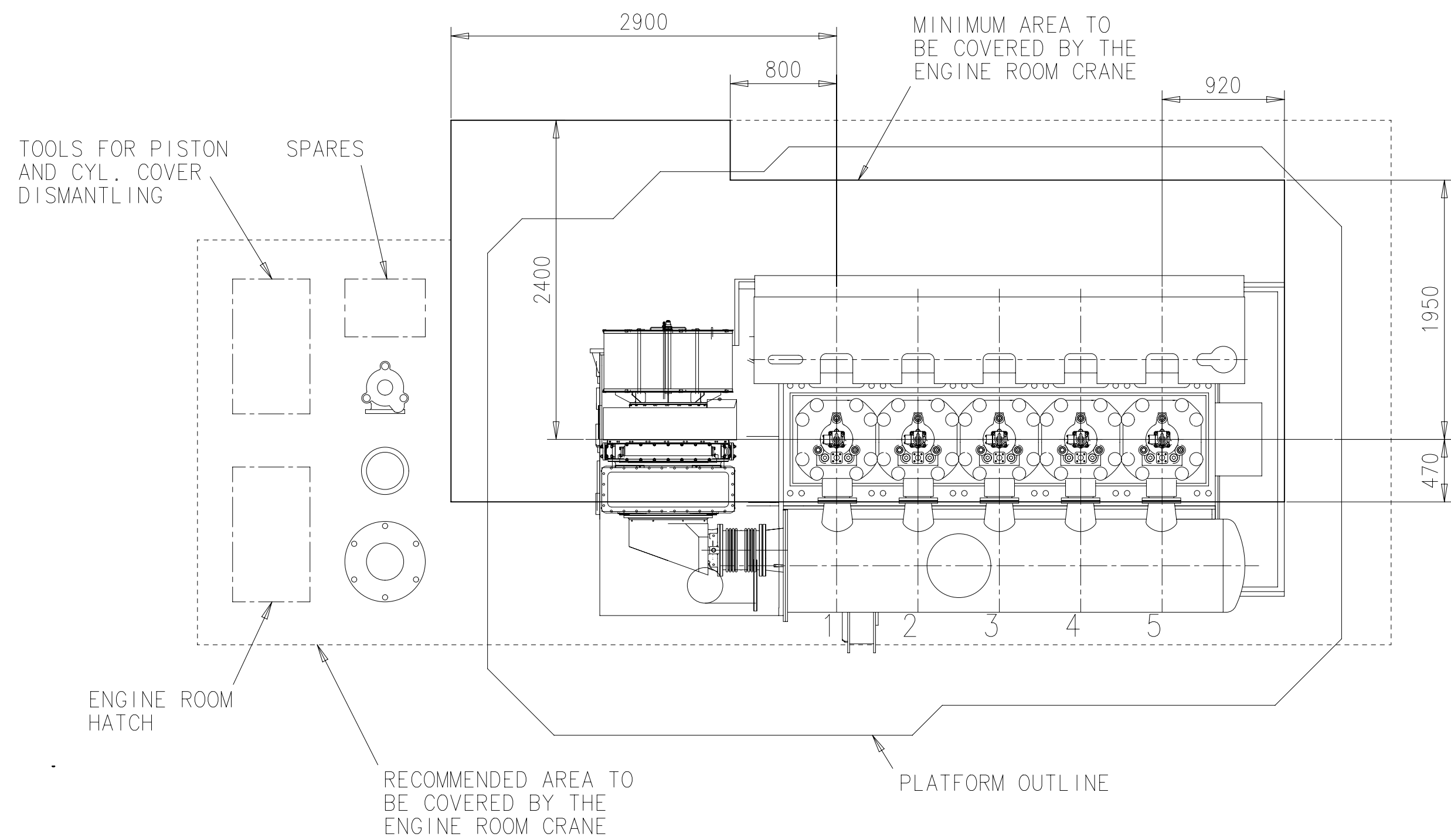
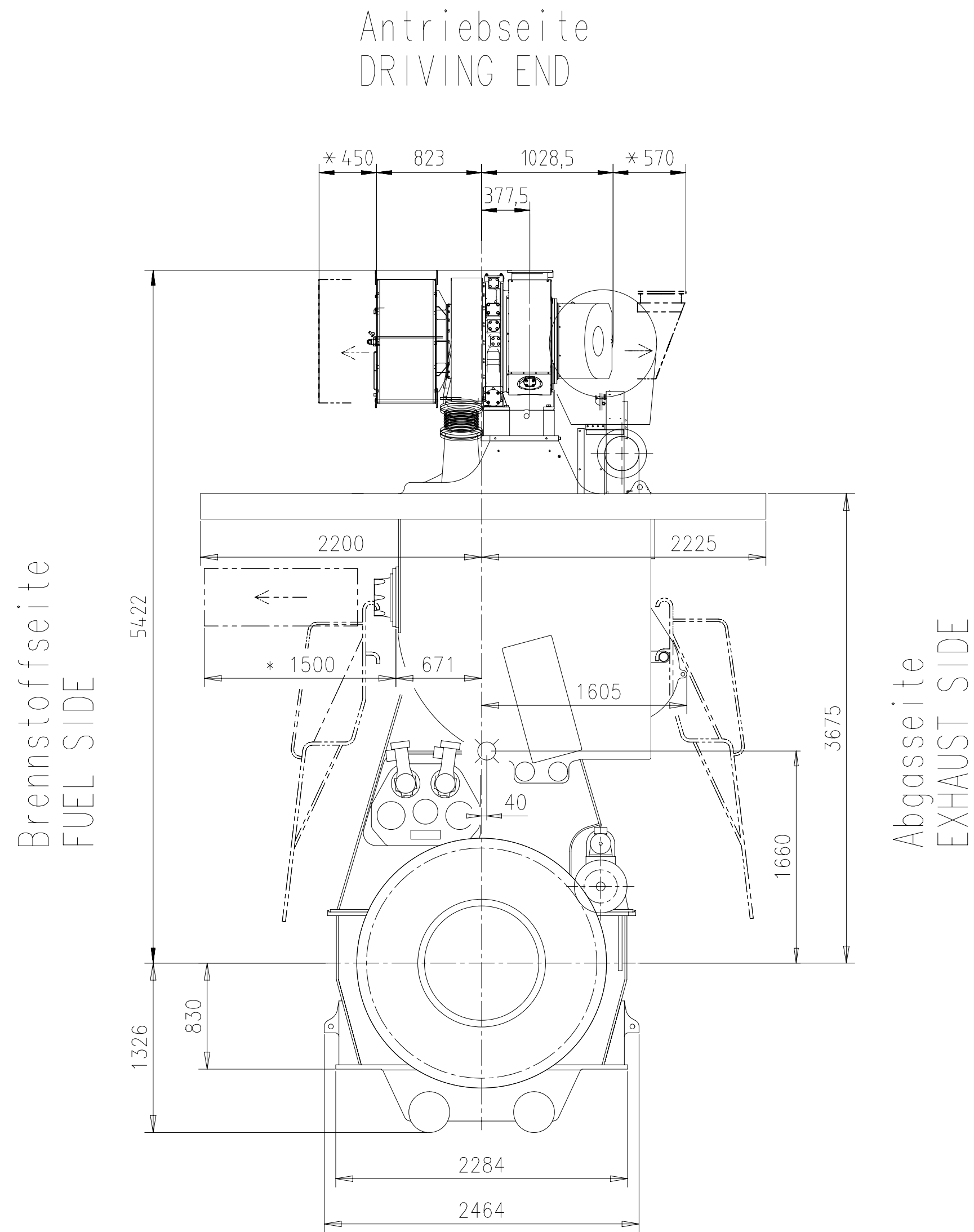
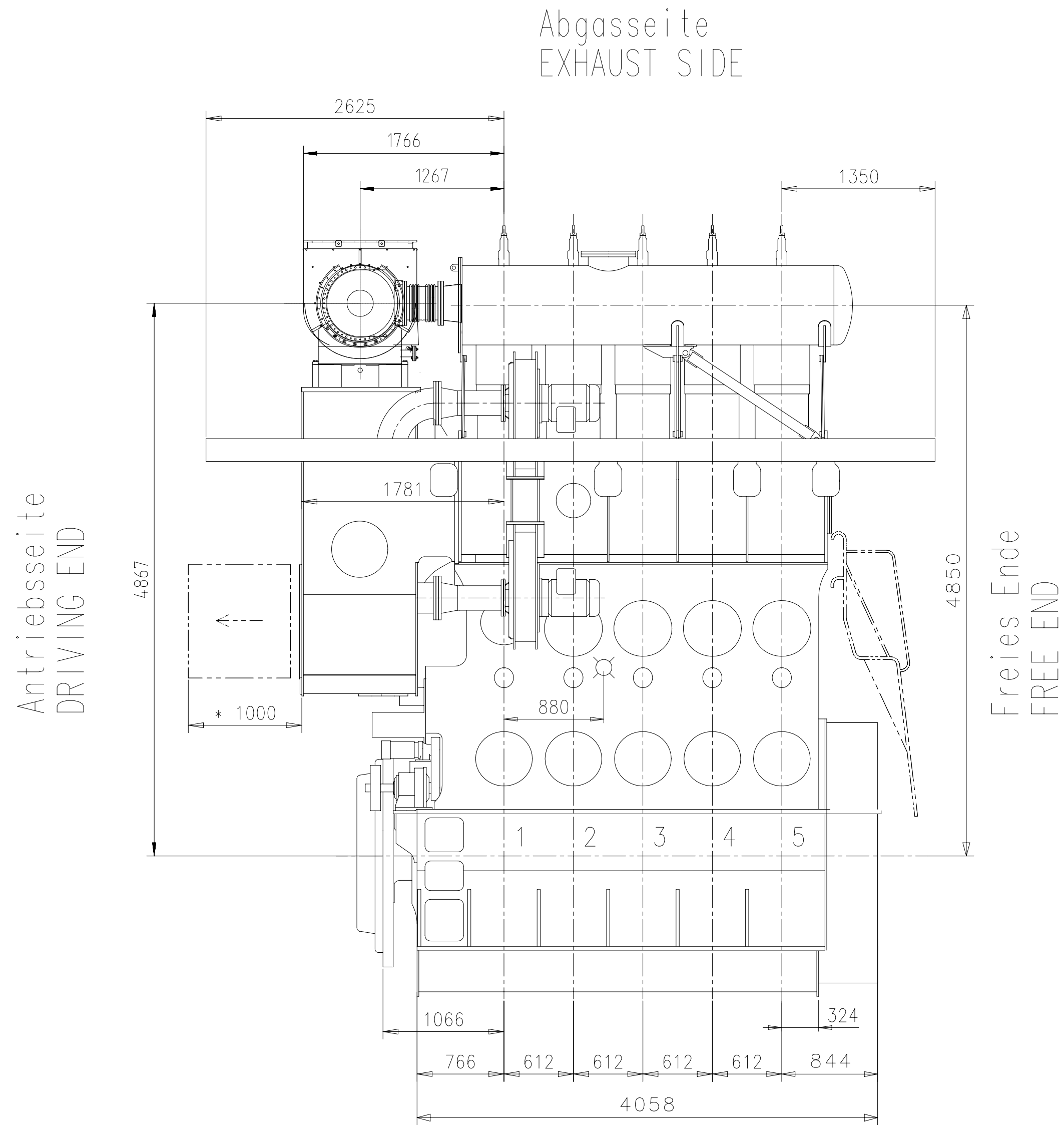


DIMENSIONS ONLY FOR REFERENCE
THIS OUTLINE DRAWING CAN NOT BE USED FOR FINAL DESIGN
PLEASE TAKE CORRESPONDING DESING GROUP

SURFACE PROTECTION SEE GROUP 0344	Made	-13.02.2016	-cku010	kubler	Scale	1:33	Size	A1	Page	1/1	Material	DAAD075783	Rev.	A
TOLERANCING PRINCIPLE ISO8015	Chkd	11.04.2016	ihc003	Herceg	Design Group	0812	Drawing ID	DAAD075783						
GENERAL TOLERANCES ACCORDING TO ISO2768-mK	Appd	12.04.2016	bha009	Haag										

ca. Schwerpunkt APPROX. CENTRE OF GRAVITY													
Gewicht ohne Wasser und Öl= 74 t WEIGHT WITHOUT WATER AND OIL													
* Platz fuer Demontage SPACE FOR REMOVAL													
TURBOCHARGER A160-L													
Quantity	001	PAAD218274	DISMANTLING DIMENSIONS				DAAD075266					0,001	
PER ENGINE	SEQ. NO.	Material ID	Material Name				Dimension, Occ.	Standard or Drawing	Basic Material	Material Standard	Weight GR/NET		
PAAD219721	Free space for lic.								0-Code	XXXXXX	Main Drw.	H	
Modif.	EAAD087477	14.02.2017											
Material ID	Number	Drawn date	Number	Drawn date	Number	Drawn date	Number	Drawn date	Number	Drawn date	Number	Drawn date	
Units		mm kg	NX				Basic Material					Net Weight	
Made		-13.02.2016	-cku010	kubler	Scale	1:33	Size	A1	Page	1/1	Material	DAAD075783	Rev.
Chkd		11.04.2016	ihc003	Herceg	Design Group		0812	Drawing ID	DAAD075783				
Appd		12.04.2016	bha009	Haag									



DIMENSIONS ONLY FOR REFERENCE
THIS OUTLINE DRAWING CAN NOT BE USED FOR FINAL DESIGN
PLEASE TAKE CORRESPONDING DESING GROUP

SURFACE PROTECTION SEE GROUP 0344
TOLERANCING PRINCIPLE ISO8015
GENERAL TOLERANCES ACCORDING TO ISO2768-mK

Units mm kg NX
Made 11.03.2019 Jaimin Prajapati
Chkd 15.03.2019 hdo002 Dörre
Appd 15.03.2019 mda006 Dacic

Basic Material Scale 1:33 Size A1 Page 1/1 Material ID DAAD113144
Design Group 0812
Drawing ID

ca. Schwerpunkt
APPROX. CENTRE OF GRAVITY

Gewicht ohne Wasser und Öl= 74 t
WEIGHT WITHOUT WATER AND OIL

* Platz fuer Demontage
SPACE FOR REMOVAL

TURBOCHARGER MET37MB

Net Weight	0,001
Quantity PER ENGINE	1
SEQ. NO.	001
Material ID	PAAD218274
Material Name	DISMANTLING DIMENSIONS
Dimension, Acc.	DAAD075266
Standard or Drawing	
Basic Material	
Material Standard	
Q-Code	XXXXX
Standard	ISO; JIS
Main Drw.	H
Material ID	PAAD321526
Free space for l.c.	
Number	
Drawn date	
Number	
Drawn date	
Number	
Drawn date	
Number	
Drawn date	

Product 5X35-B

ENGINE OUTLINE VIEW

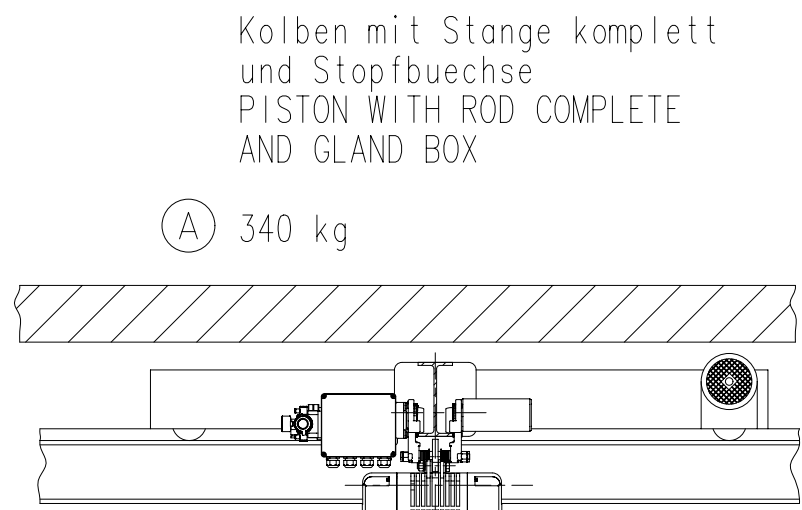
Motoransichten

WINGD
Winterthur Gas & Diesel

Units mm kg NX

Basic Material

Net Weight



Zylindereinsatz mit Wasserleitmantel
CYLINDER LINER WITH WATER GUIDE JACKET

Gewicht ohne Hebevorrichtung:
WEIGHT WITHOUT LIFTING TOOL:

(A) 795 kg

Zylinderdeckel mit Auslassventil
komplett und Wasserleitmantel
CYLINDER COVER WITH EXHAUST
VALVE COMPLETE AND WATER
GUIDE JACKET

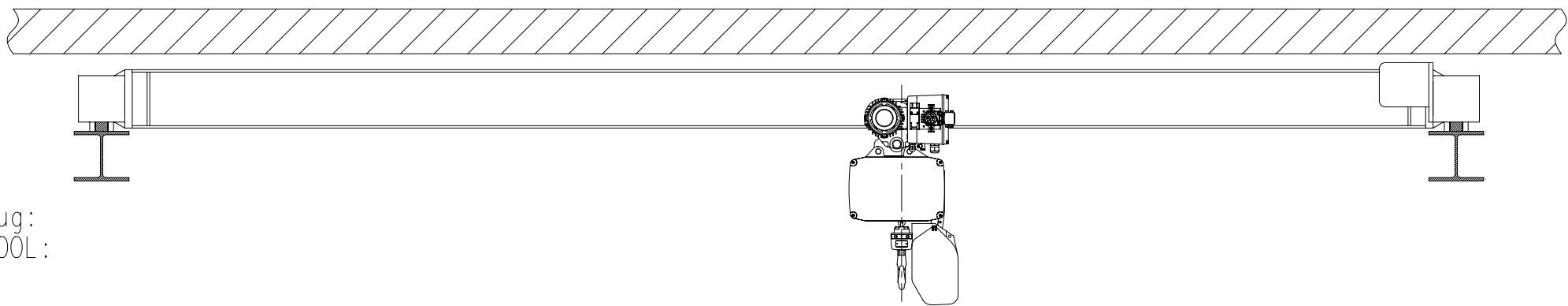
Gewicht ohne Hebewerkzeug:
Weight WITHOUT LIFTING TOOL:

(A) 535 kg

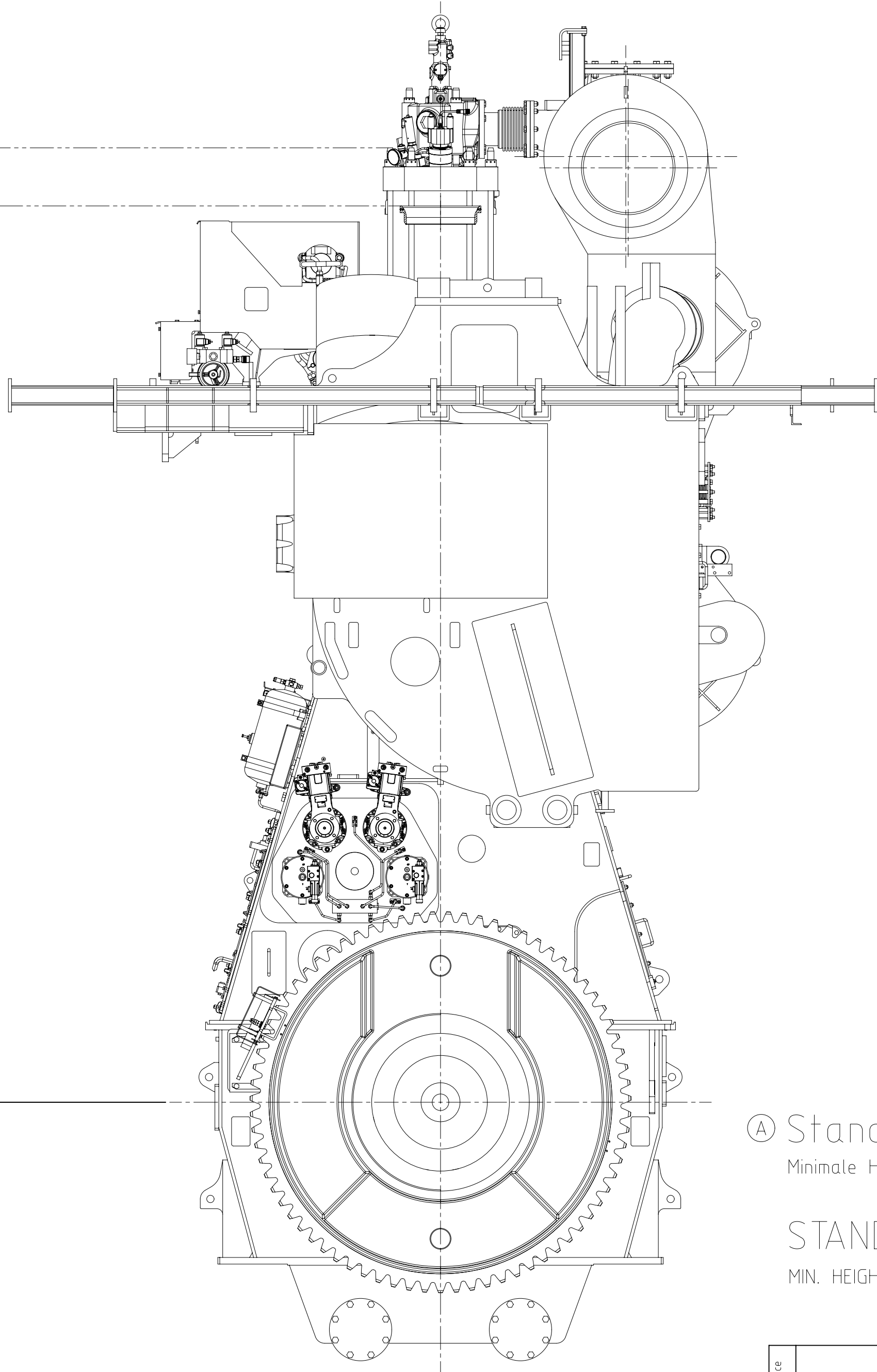
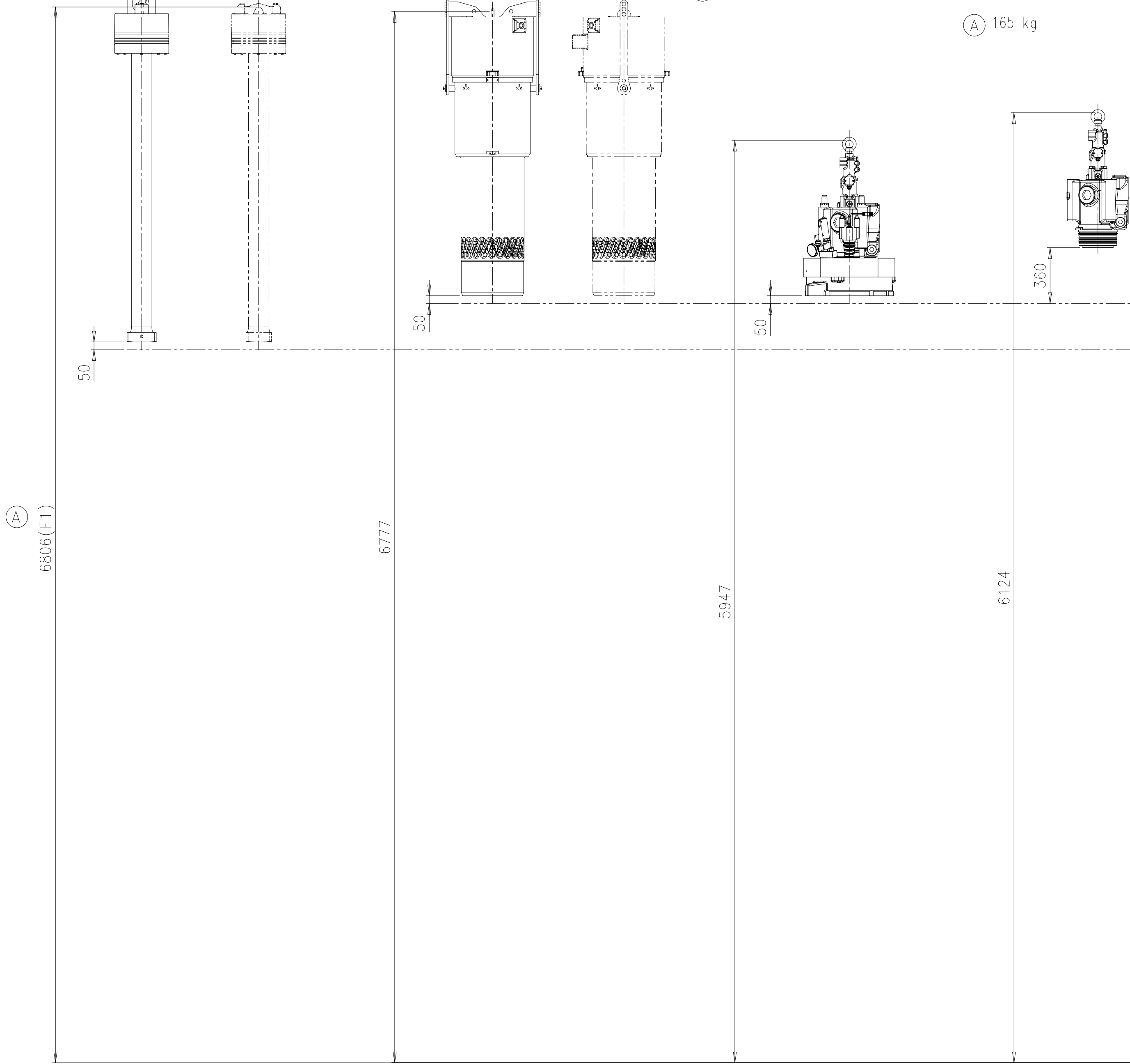
Auslassventil komplett
EXHAUST VALVE COMPLETE

Gewicht ohne Hebewerkzeug:
Weight WITHOUT LIFTING TOOL:

(A) 165 kg



Krankapazitaet min.
CRANE CAPACITY MIN. 950 kg (A)



(A) Kompatibilitaetshinweis zum Kranhaken

Die Hebewerkzeuge zu diesem Motor
sind kompatibel mit folgenden
Kranhaken:
DIN 15401: Form RSN, Hakennummer 0.25 bis 0.5

COMPATIBILITY NOTE FOR CRANE HOOK

THE LIFTING TOOLS FOR THIS ENGINE
ARE COMPATIBLE WITH FOLLOWING
CRANE HOOK:
DIN 15401: SHAPE RSN, HOOK NUMBER 0.25 TO 0.5

(A) Standardausbau

Minimale Hoehe fuer den vertikalen Ausbau: F1

STANDARD DISMANTLING

MIN. HEIGHT FOR VERTICAL REMOVAL: F1

Free space for l.c.		0-Code XXXXX		Main Drw.	
Modif.	(A)	EAAD091495	02.04.2020		
Number		Drawn date		Number	
Product	X35-B		DISMANTLING DIMENSIONS		
WIN GD Winterthur Gas & Diesel		Ausbaumasse			
Units	mm kg	NX	Basic Material	Net Weight 0,001	
Made	22.01.2016	mda006	Dacic	Scale	1:20
Chkd	28.01.2016	abo011	Bösiger	Design Group	
Appd	29.01.2016	bha009	Haag	0812	
SURFACE PROTECTION SEE GROUP 0344		Size		Page	1/1
TOLERANCING PRINCIPLE ISO8015		Drawing ID		Material ID	PAAD218274
GENERAL TOLERANCES ACCORDING TO ISO2768-mK		Rev.		A	
		DAAD075266			

Download
"DXF file"

WinGD-5X35-B_Engine-outline-views

TRACK CHANGES

DATE	SUBJECT	DESCRIPTION
2018-01-30	DRAWING SET	First web upload
2019-05-15	DAAD113144	Engine Outline views for Turbocharger type 1xMET37MB has been added.
2020-07-20	DAAD075266	Revised Dismantling Dimensions drawing has been updated.

DISCLAIMER

© Copyright by Winterthur Gas & Diesel Ltd.

All rights reserved. No part of this document may be reproduced or copied in any form or by any means (electronic, mechanical, graphic, photocopying, recording, taping or other information retrieval systems) without the prior written permission of the copyright owner.

THIS PUBLICATION IS DESIGNED TO PROVIDE AN ACCURATE AND AUTHORITATIVE INFORMATION WITH REGARD TO THE SUBJECT-MATTER COVERED AS WAS AVAILABLE AT THE TIME OF PRINTING. HOWEVER, THE PUBLICATION DEALS WITH COMPLICATED TECHNICAL MATTERS SUITED ONLY FOR SPECIALISTS IN THE AREA, AND THE DESIGN OF THE SUBJECT-PRODUCTS IS SUBJECT TO REGULAR IMPROVEMENTS, MODIFICATIONS AND CHANGES. CONSEQUENTLY, THE PUBLISHER AND COPYRIGHT OWNER OF THIS PUBLICATION CAN NOT ACCEPT ANY RESPONSIBILITY OR LIABILITY FOR ANY EVENTUAL ERRORS OR OMISSIONS IN THIS BOOKLET OR FOR DISCREPANCIES ARISING FROM THE FEATURES OF ANY ACTUAL ITEM IN THE RESPECTIVE PRODUCT BEING DIFFERENT FROM THOSE SHOWN IN THIS PUBLICATION. THE PUBLISHER AND COPYRIGHT OWNER SHALL UNDER NO CIRCUMSTANCES BE HELD LIABLE FOR ANY FINANCIAL CONSEQUENTIAL DAMAGES OR OTHER LOSS, OR ANY OTHER DAMAGE OR INJURY, SUFFERED BY ANY PARTY MAKING USE OF THIS PUBLICATION OR THE INFORMATION CONTAINED HEREIN.