

1

2

3

4

SURFACE PROTECTION SEE GROUP 0344

TOLERANCING PRINCIPLE ISO8015

GENERAL TOLERANCES ACCORDING TO ISO2768-mK

Available executions

| Execution No. | Material ID | Cylinder No. |
|---------------|-------------|--------------|
| 1 | PAAD119125 | 6-12 |

NOTE

The above executions can be configured using the Engine Configurator.

Detailed guidance for the executions is provided within the Marine Installation Manual (MIM). If a specific execution of interest is not shown in the above table, then it may still be under development or not available. For further information or in case of a project-specific request, WinGD must be contacted directly.

This publication is designed to provide accurate and authoritative information with regard to the subject-matter covered as it was available at the time of printing. However, the publication deals with complicated technical matters suited only for specialists in the area, and the design of the subject-products is subject to regular improvements, modifications and changes. Consequently, the publisher and copyright owner of this publication cannot accept any responsibility or liability for any eventual errors or omissions in this document or for discrepancies arising from the features of any actual item in the respective product being different from those shown in this publication. The publisher and copyright owner shall under no circumstances be held liable for any financial consequential damages or other loss, or any other damage or injury, suffered by any party making use of this publication or the information contained herein.

| | | | | | | | | | |
|----------------|--------------------|---------|----------|---------------|------------|-----------------|----------|---------------|-----|
| Prod. | X92DF X92DF-2.0 | | | | | | | | |
| Change History | | | | | | | | | |
| | - | sde101 | dst009 | 27.10.2021 | CNAA000871 | new Design | | - | - |
| | Rev. | Creator | Approver | Approval Date | Change ID | Change Synopsis | Approved | Activity Code | E C |

WIN GD
Winterthur Gas & Diesel

AIR SUPPLY SYSTEM
MIDS master drawing

separate BOM available

Dimension

| | | | | | | | | | |
|--|----|---------|------------|-----------------|----------------|------------|--------------|----------|-----|
| Scale | - | | NX | Units [mm] [kg] | Basic Material | Net Weight | 0.001 | | |
| Copyright Winterthur Gas & Diesel Ltd. All rights reserved. By taking possession of the drawing the recipient recognizes and honours these rights. Neither the whole nor any part of this drawing may be used in any way for construction, fabrication, marketing or any other purpose nor copied in any way nor made accessible to third parties without the previous written consent of Winterthur Gas & Diesel Ltd. | | | | Main Design | Design Group | 9725 | Q-Code XXXXX | Standard | WDS |
| Qty per | A4 | Item ID | PTAA015306 | | Drawing Page/s | 1/1 | | | |

1

2

3

4

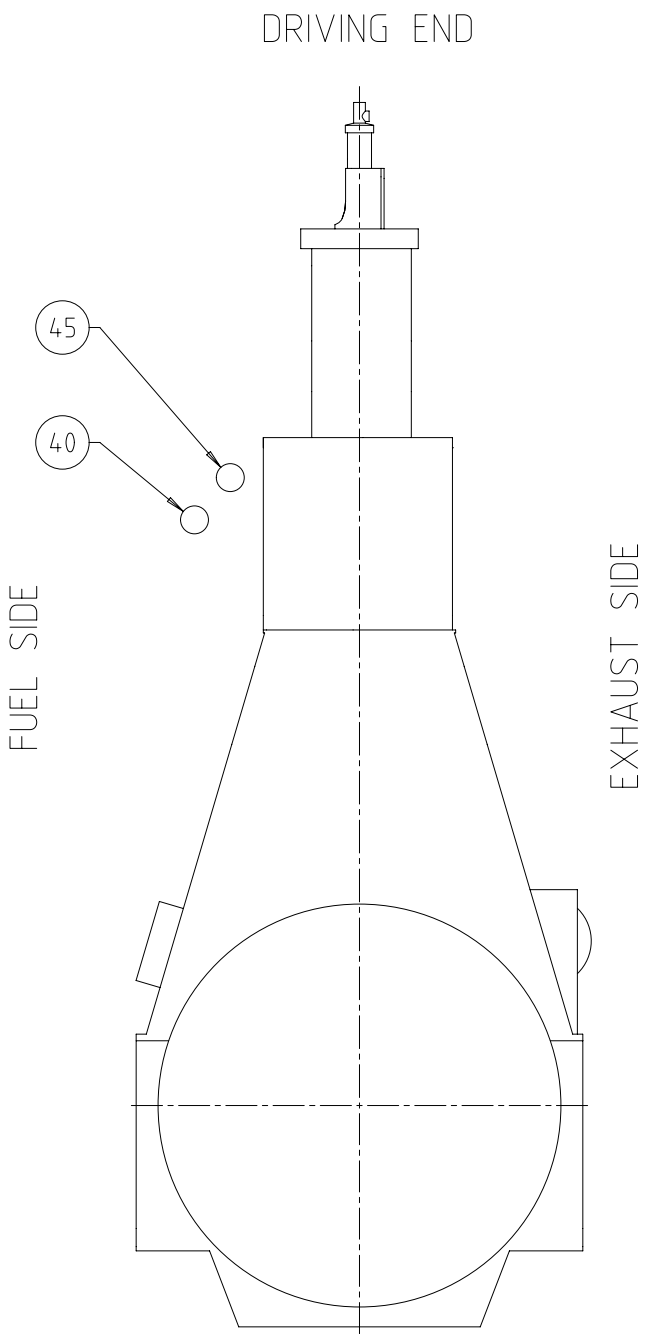
| SEQ NO | QTY | Item ID | Item Name | Dimension | Standard-ID | Basic Material | Net Weight |
|--------|-----|------------|-------------------|-----------|-------------|----------------|------------|
| 1 | 1 | PTAA010996 | AIR SUPPLY SYSTEM | | | | 0.001 |

| | | | | | | | |
|--|--|--|--|--|--|--|--|
| | | | | | | | |
|--|--|--|--|--|--|--|--|

| | | | | | | | | |
|----------------|--|---------|----------------------------|---------------|------------|--|----------|---------------|
| Prod. | 6,7,8,9,10,11,12 X92 6,7,8,9,10,11,12 X92DF | | 6,7,8,9,10,11,12 X92DF-2.0 | | | | | |
| Change History | B | sde101 | dst009 | 27.10.2021 | CNAA000871 | Main Design/Drawing Introduced | 4 | 3 |
| | A | sde101 | mhu019 | 11.01.2019 | EAAD090092 | Legacy information. See corresponding ChangeNotice | 4 | - |
| | - | jvix12 | wwr001 | 17.03.2014 | | - | - | - |
| | Rev. | Creator | Approver | Approval Date | Change ID | Change Synopsis | Approved | Activity Code |

| | |
|--|-------------------|
|  | AIR SUPPLY SYSTEM |
|--|-------------------|

| | | | | | | | | |
|--|-------------|-----------|----------------|---------|------------|------------|------------|-------|
| Bill Of Material | | Dimension | | | | | | |
| Copyright Winterthur Gas & Diesel Ltd. All rights reserved. By taking possession of the document the recipient recognizes and honours these rights. Neither the whole nor any part of this document may be used in any way for construction, fabrication, marketing or any other purpose nor copied in any way nor made accessible to third parties without the previous written consent of Winterthur Gas & Diesel Ltd. | Units | [m] [kg] | Basic Material | | | Net Weight | 0.001 | |
| | Main Design | Yes | Design Group | 9725 | Q-Code | XXXXX | Standard | WDS |
| | Qty per | Engine | A4 | Item ID | PAAD119125 | | BOM Page/s | 01/01 |



SPECIFICATIONS which must be met

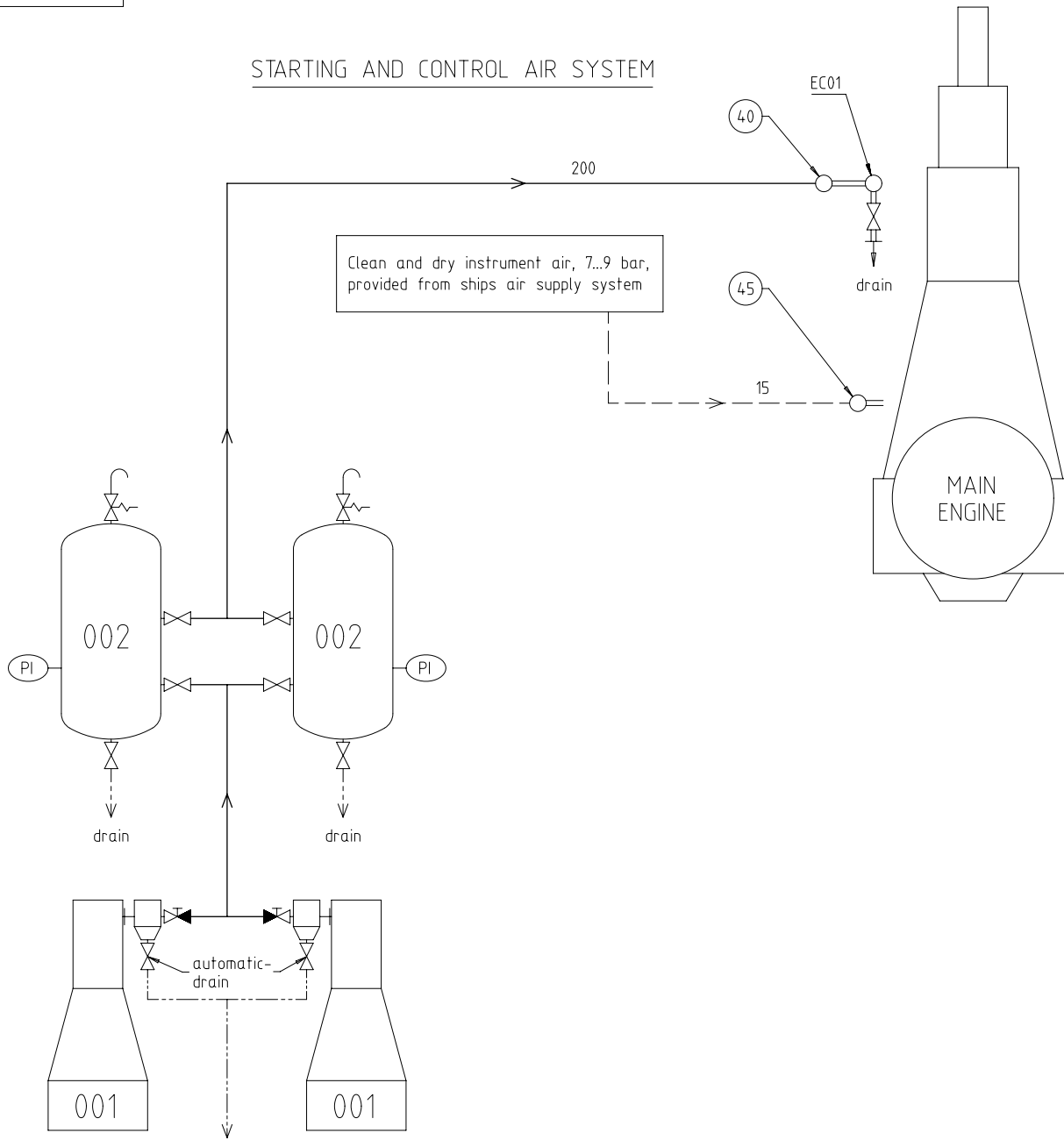
| | |
|------|---|
| (40) | INLET - Starting air Starting air pressure: 25 or 30 bar (according to design) Capacity of starting air receivers: according to GTD |
| (45) | INLET - Control air Control air pressure: 7-9 bar Control air quality has to be comply with the compressed air purity class: 5-4-3 according to ISO 8573-1 (2010-04-15) |

| | | | | | | | | | | | | | | | |
|--|------|---------|----------|---------------|-------------------|-----------------|----------------|------------|--------|-------|--|----------------|---------------|---|---|
| Prod. | | | | | | | | | | | | | | | |
| Change History | | | | | | | | | | | | | | | |
| | - | sde101 | dst009 | 27.10.2021 | CNA000871 | new Design | | | | | | - | - | | |
| | Rev. | Creator | Approver | Approval Date | Change ID | Change Synopsis | | | | | | Approved | Activity Code | E | C |
| WINGD Winterthur Gas & Diesel | | | | | AIR SUPPLY SYSTEM | | | | | | | | | | |
| Dimension | | | | | | | | | | | | | | | |
| Scale | - | ☐ | | ☉ | NX | Units [mm] [kg] | Basic Material | | | | | Net Weight | 0.001 | | |
| Copyright Winterthur Gas & Diesel Ltd. All rights reserved. By taking possession of the drawing the recipient recognizes and honours these rights. Neither the whole nor any part of this drawing may be used in any way for construction, fabrication, marketing or any other purpose nor copied in any way nor made accessible to third parties without the previous written consent of Winterthur Gas & Diesel Ltd. | | | | | | Main Design | Design Group | 9725 | Q-Code | XXXXX | | Standard | WDS | | |
| Qty per | | | | | | A3 | Item ID | PTAA010996 | | | | Drawing Page/s | 1/2 | | |

SURFACE PROTECTION SEE GROUP 0344
 TOLERANCING PRINCIPLE ISO8015
 GENERAL TOLERANCES ACCORDING TO ISO2768-mK

SYSTEM PROPOSAL

STARTING AND CONTROL AIR SYSTEM



| | |
|------|---|
| Pos. | System Components *1) |
| 001 | Starting air compressor 25/30 bar (capacity according to GTD) |
| 002 | Starting air receiver 25/30 bar (capacity according to GTD) |

| | |
|------|---|
| Pos. | Engine Connections *2) |
| (40) | INLET - Starting air |
| (45) | INLET - Control air (for control system and air spring) |

| | |
|------|--|
| Pos. | Engine Components *3) |
| EC01 | Distribution pipe with automatic starting air shut-off valve |

Remarks:-

- Drain plugs and drain cocks to be installed where necessary.
- Pipe diameters for starting air compressors and auxiliary equipment according to suppliers recommendations.

*1) Refer to the "Pipe Connection Plan" for the execution and location of the engine pipe connections.

*2) To be delivered by external supplier and to be installed by the shipyard.

*3) To be delivered by the engine builder. i.e. already equipped on engine side.

- Starting air feed pipes
- - - Control air pipes
- Ancillary equipment pipes
- · - · - · Drain pipes
- ==== Pipes on engine
- Pipe connections

| | | | | | | | | | | | |
|---|---------|----------|---------------|-----------|-----------------|----------|---------------|---|---------|-------|--|
| SURFACE PROTECTION SEE GROUP 0344 | | | | Change | | - | | - | | - | |
| Rev. | Creator | Approver | Approval Date | Change ID | Change Synopsis | Approved | Activity Code | E | C | | |
| - | sde101 | dst009 | 27.10.2021 | CNA000871 | new Design | | | | | | |
| TOLERANCING PRINCIPLE ISO8015 | | | | mm | kg | - | | | | | |
| GENERAL TOLERANCES ACCORDING TO ISO2768-mK | | | | NX | A2 | Item ID | PTAA010996 | | Drawing | 2 / 2 | |
| <small>Copyright Wartsila Gas & Diesel Ltd. All rights reserved. By using processor of this drawing the recipient acknowledges that Wartsila Diesel Ltd. neither the world nor any part of this drawing may be used in any way for construction, fabrication, installation or any other purpose not agreed in the written contract between the parties without the previous written consent of Wartsila Gas & Diesel Ltd.</small> | | | | | | | | | | | |

MIDS – WINGD X92DF/-2.0 – Air Supply System (DG9725)

TRACK CHANGES

| DATE | SUBJECT | DESCRIPTION |
|------------|-------------|---|
| 2021-12-21 | DRAWING SET | First web upload of the DF specific drawing set |

DISCLAIMER

© Copyright by Winterthur Gas & Diesel Ltd.

All rights reserved. No part of this document may be reproduced or copied in any form or by any means (electronic, mechanical, graphic, photocopying, recording, taping or other information retrieval systems) without the prior written permission of the copyright owner.

THIS PUBLICATION IS DESIGNED TO PROVIDE AN ACCURATE AND AUTHORITATIVE INFORMATION WITH REGARD TO THE SUBJECT-MATTER COVERED AS WAS AVAILABLE AT THE TIME OF PRINTING. HOWEVER, THE PUBLICATION DEALS WITH COMPLICATED TECHNICAL MATTERS SUITED ONLY FOR SPECIALISTS IN THE AREA, AND THE DESIGN OF THE SUBJECT-PRODUCTS IS SUBJECT TO REGULAR IMPROVEMENTS, MODIFICATIONS AND CHANGES. CONSEQUENTLY, THE PUBLISHER AND COPYRIGHT OWNER OF THIS PUBLICATION CAN NOT ACCEPT ANY RESPONSIBILITY OR LIABILITY FOR ANY EVENTUAL ERRORS OR OMISSIONS IN THIS BOOKLET OR FOR DISCREPANCIES ARISING FROM THE FEATURES OF ANY ACTUAL ITEM IN THE RESPECTIVE PRODUCT BEING DIFFERENT FROM THOSE SHOWN IN THIS PUBLICATION. THE PUBLISHER AND COPYRIGHT OWNER SHALL UNDER NO CIRCUMSTANCES BE HELD LIABLE FOR ANY FINANCIAL CONSEQUENTIAL DAMAGES OR OTHER LOSS, OR ANY OTHER DAMAGE OR INJURY, SUFFERED BY ANY PARTY MAKING USE OF THIS PUBLICATION OR THE INFORMATION CONTAINED HEREIN.