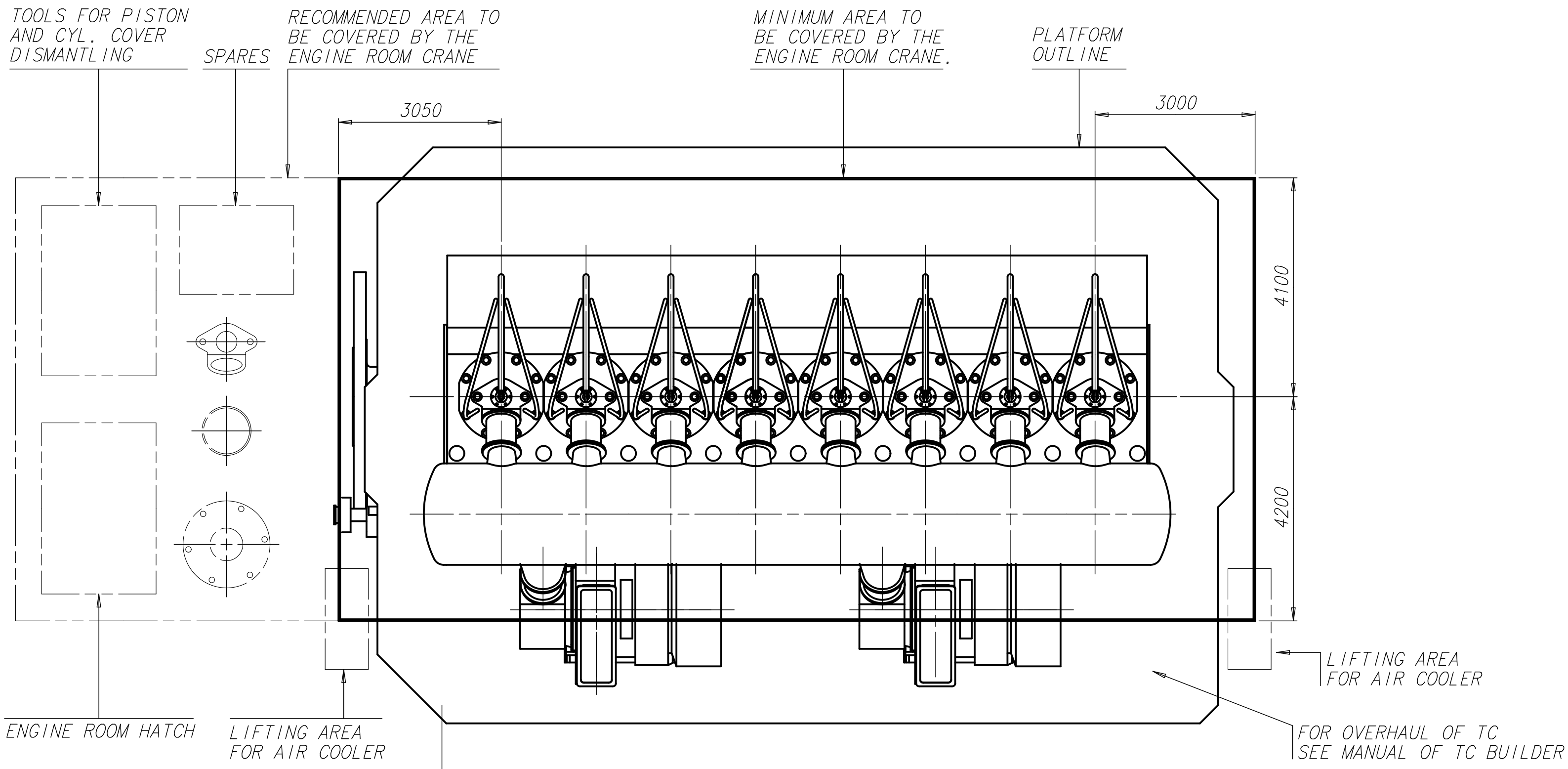
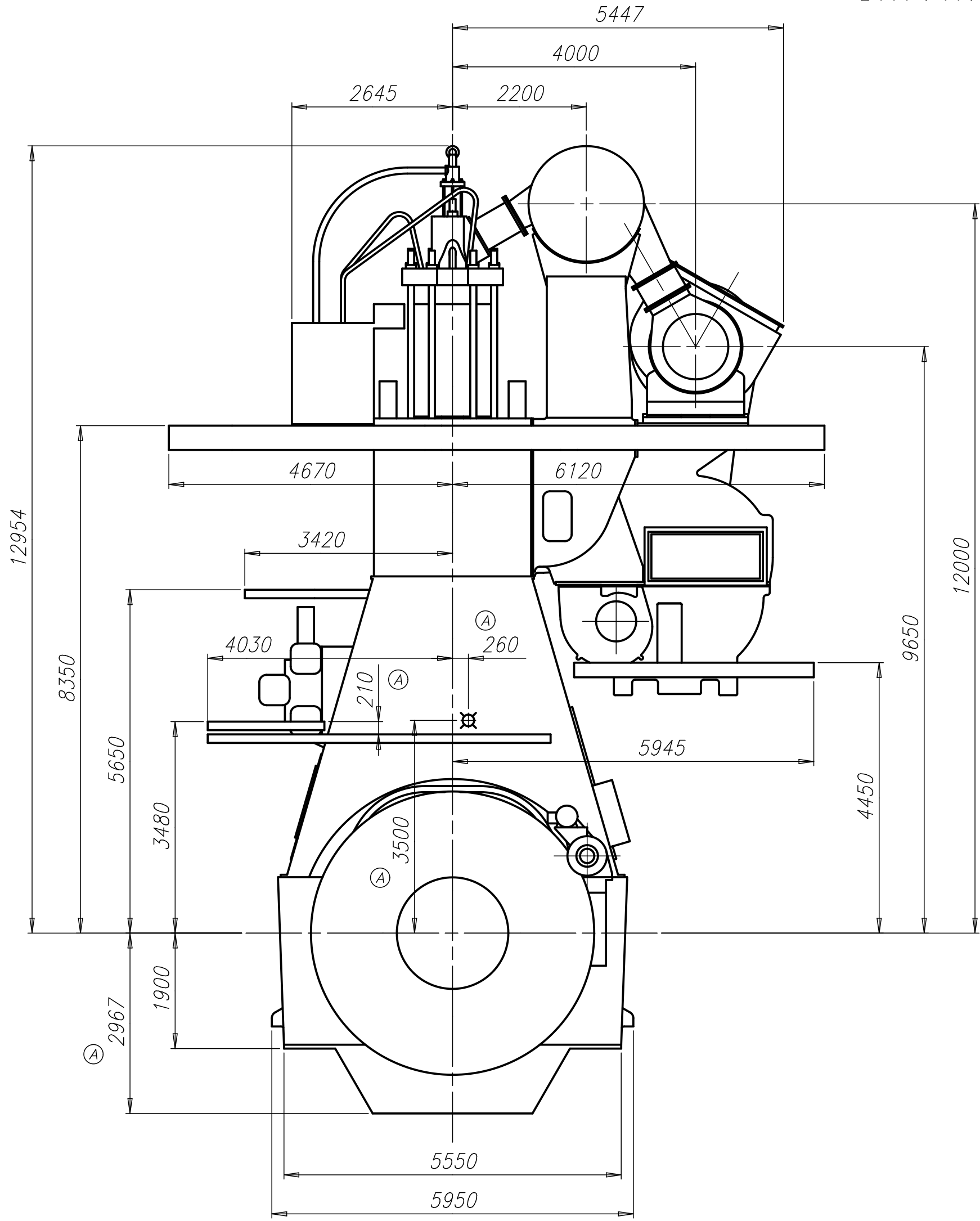
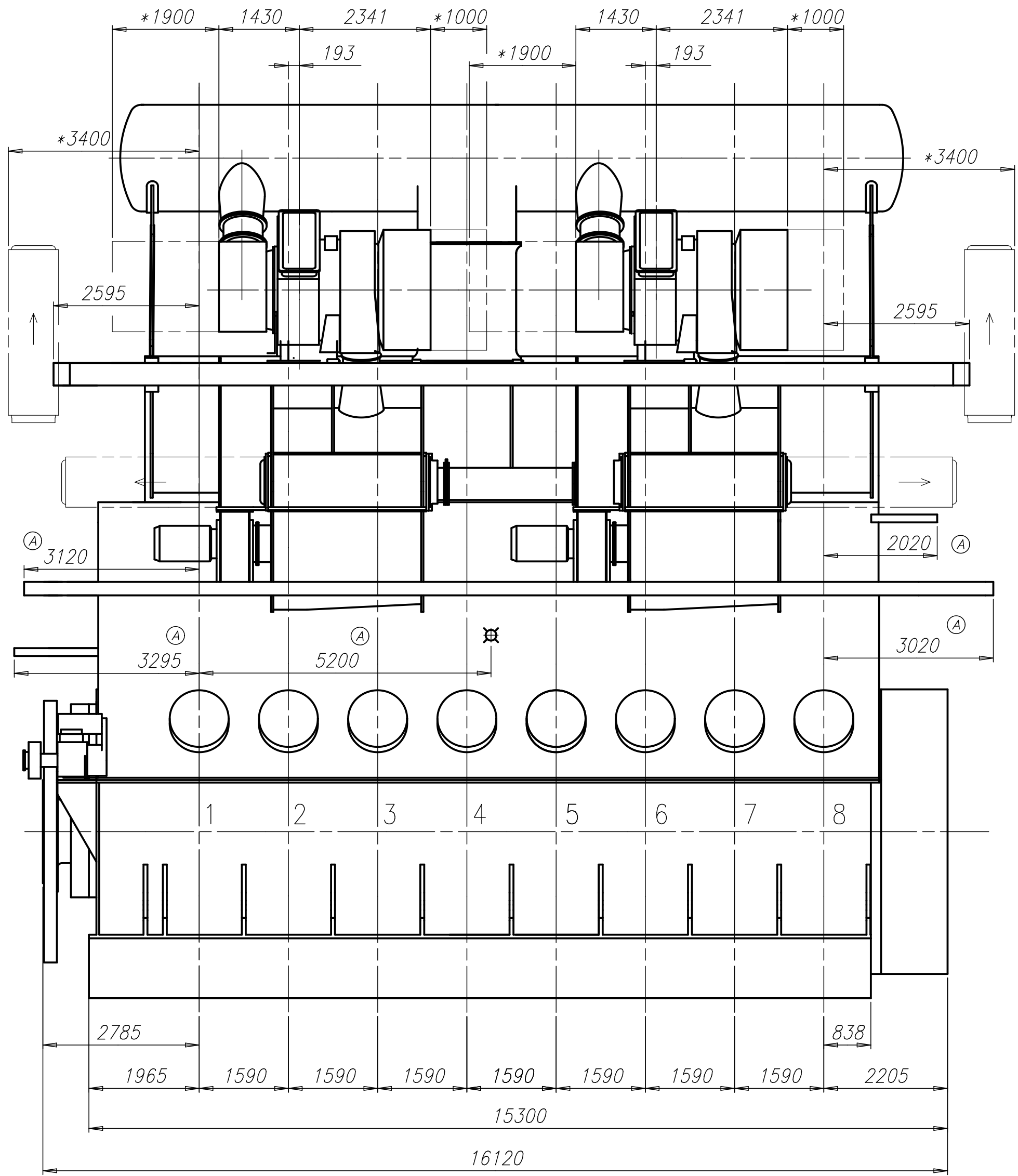


Download
"DXF file"

Abgasseite
EXHAUST SIDE

Antriebsseite
DRIVING END




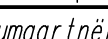
SINGLE PIECE CRANKSHAFT

ca. Schwerpunkt
APPROX. CENTRE OF GRAVITY

Gewicht ohne Wasser oder Öl= 1380t
WEIGHT WITHOUT WATER NOR OIL

* Platz fuer Demontage
SPACE FOR REMOVAL

TURBOCHARGER 2x MET83MB

1	002	PAAD093149	DISMANTLING DIMENSIONS			DAAD029670			0.00
QTY	SEQ NO	Material ID	Material Name	Dimension/Occ.Dimension	Standard or Drawing	Basic Material Material Standard	Weight GR./NET		
Free space for I.C.						Q-Code	XXXXXX	Main Draw.	
						Standard	ISO JIS	H	
Modif.	A	EAAD086058	19.08.2016						
	Number	Drawn date	Number	Drawn date	Number	Drawn date	Number	Drawn date	
 Winterthur Gas & Diesel			Product WBX92		ENGINE OUTLINE VIEW Motoransichten				
Units	mm kg	IDE			Basic Material		Net Weight 0.001		
Made	2015-11-18 nba032 N. Baumgartner			Scale 1:70	Size A1	Page 1/1	Material ID	PAAD201895	
Chkd	18.11.2015 cku010 Claudio			Design Group	Drawing ID	DAAD069804	Rev.	A	
Appd	18.11.2015 bha009 Haag			0812					

DIMENSIONS ONLY FOR REFERENCE
FOR MANUFACTURING SEE
CORRESPONDING DESIGN-GROUP

SURFACE PROTECTION SEE GROUP 0344
TOLERANCING PRINCIPLE ISO8015
GENERAL TOLERANCES ACCORDING TO ISO2768-mK

Download
"DXF file"

Kompatibilitätshinweis zum Kranhaken

Die Hebwerkzeuge zu diesem Motor
sind kompatibel mit folgenden
Kranhaken:

DIN 15401: Form RSN, Hakennummer 5 bis 6

COMPATIBILITY NOTE FOR CRANE HOOK

THE LIFTING TOOLS FOR THIS ENGINE
ARE COMPATIBLE WITH FOLLOWING
CRANE HOOK:


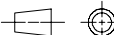
DIN 15401: SHAPE RSN, HOOK NUMBER 5 TO 6

Standardausbau

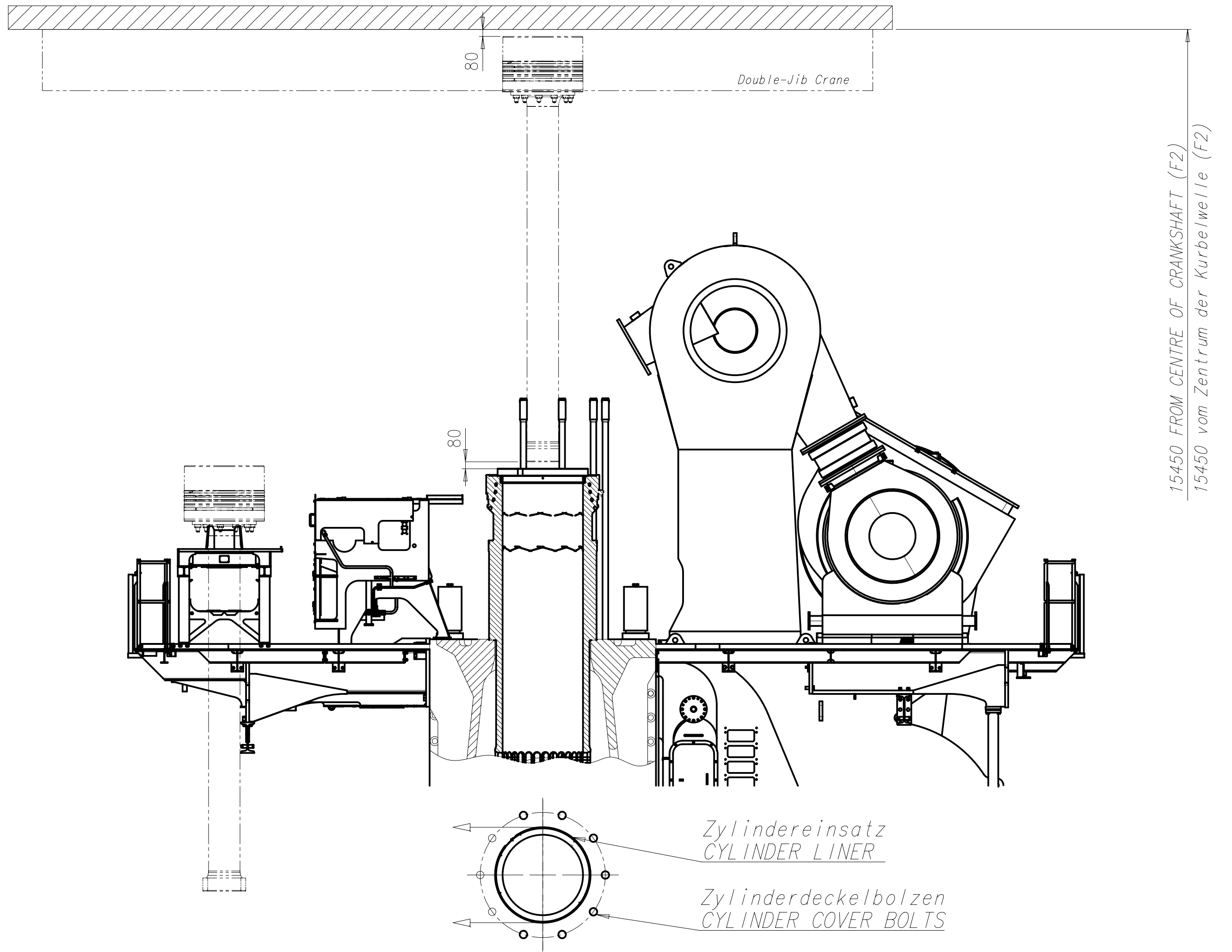
Minimale Hoehe fuer den vertikalen Ausbau: F1

STANDARD DISMANTLING

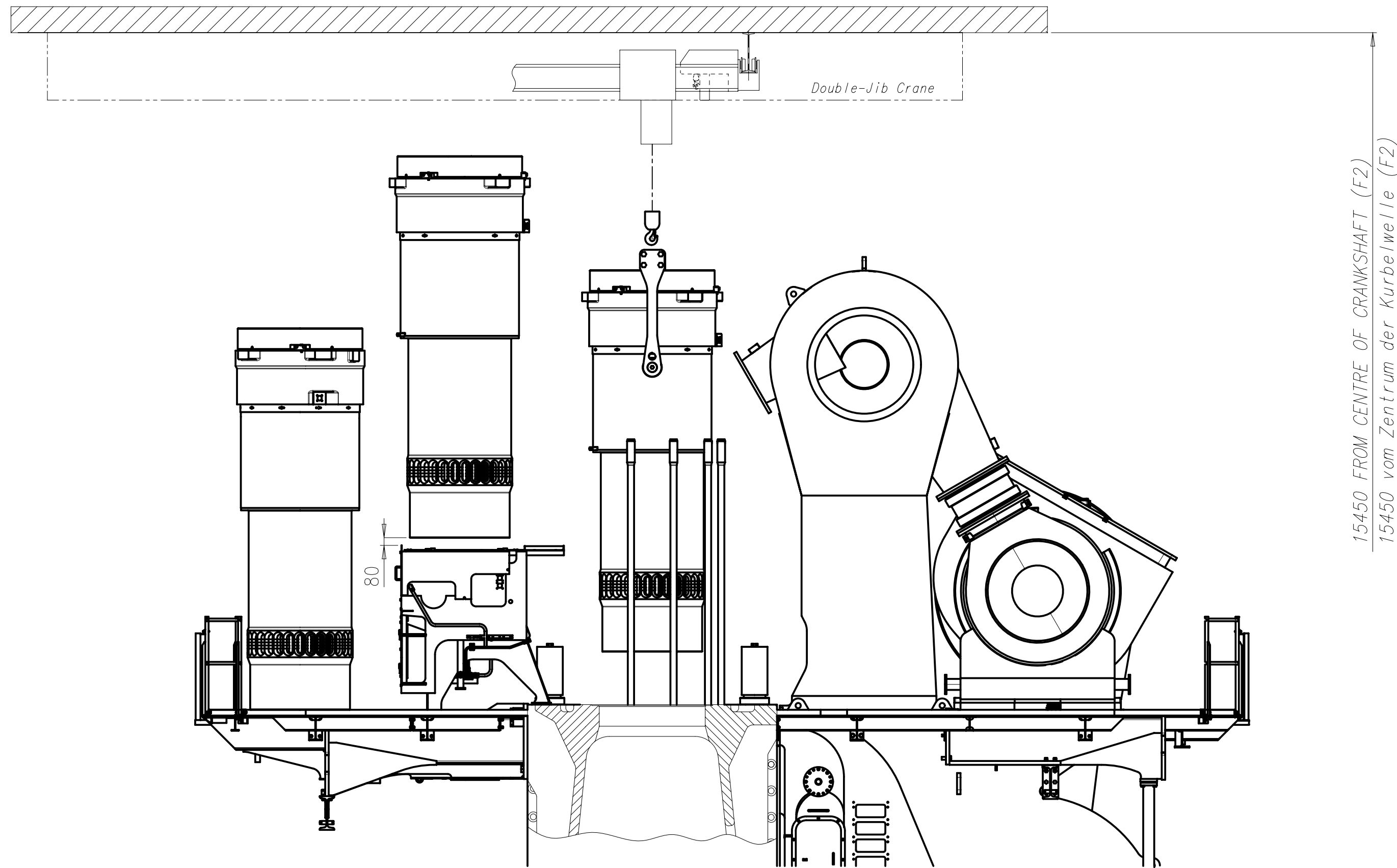
MIN. HEIGHT FOR VERTICAL REMOVAL: F1

Free space for logo										0-Code XXXXXX		Main Dwg.		
										Standard ISO; JIS				
Modif.	A	EAAD084939	08.11.2013	B	EAAD085196	27.05.2014	C	EAAD091495	06.04.2020					
		Number	Drawn date		Number	Drawn date		Number	Drawn date		Number	Drawn date		
<div> Winterthur Gas & Diesel</div>				Product X92		DISMANTLING DIMENSIONS								
						Ausbaumasse								
Units	mm kg		NX				Basic Material				Net Weight 0,001			
SURFACE PROTECTION SEE GROUP 0344			Made	05.06.2013		csc001 C.Schmutz		Scale	1:50		Size	A1		
TOLERANCING PRINCIPLE ISO8015			Chkd	05.06.2013		hke002 Kern		Design Group			Page	1/3		
GENERAL TOLERANCES ACCORDING TO ISO2768-mK			Appd	05.06.2013		bfr005 Frei		0812		Drawing ID	DAAD029670			
										Material ID		PAAD093149	Rev.	C

Kolbenausbau
PISTON DISMANTLING



Ausbau Zylindereinsatz
DISMANTLING OF CYLINDER LINER



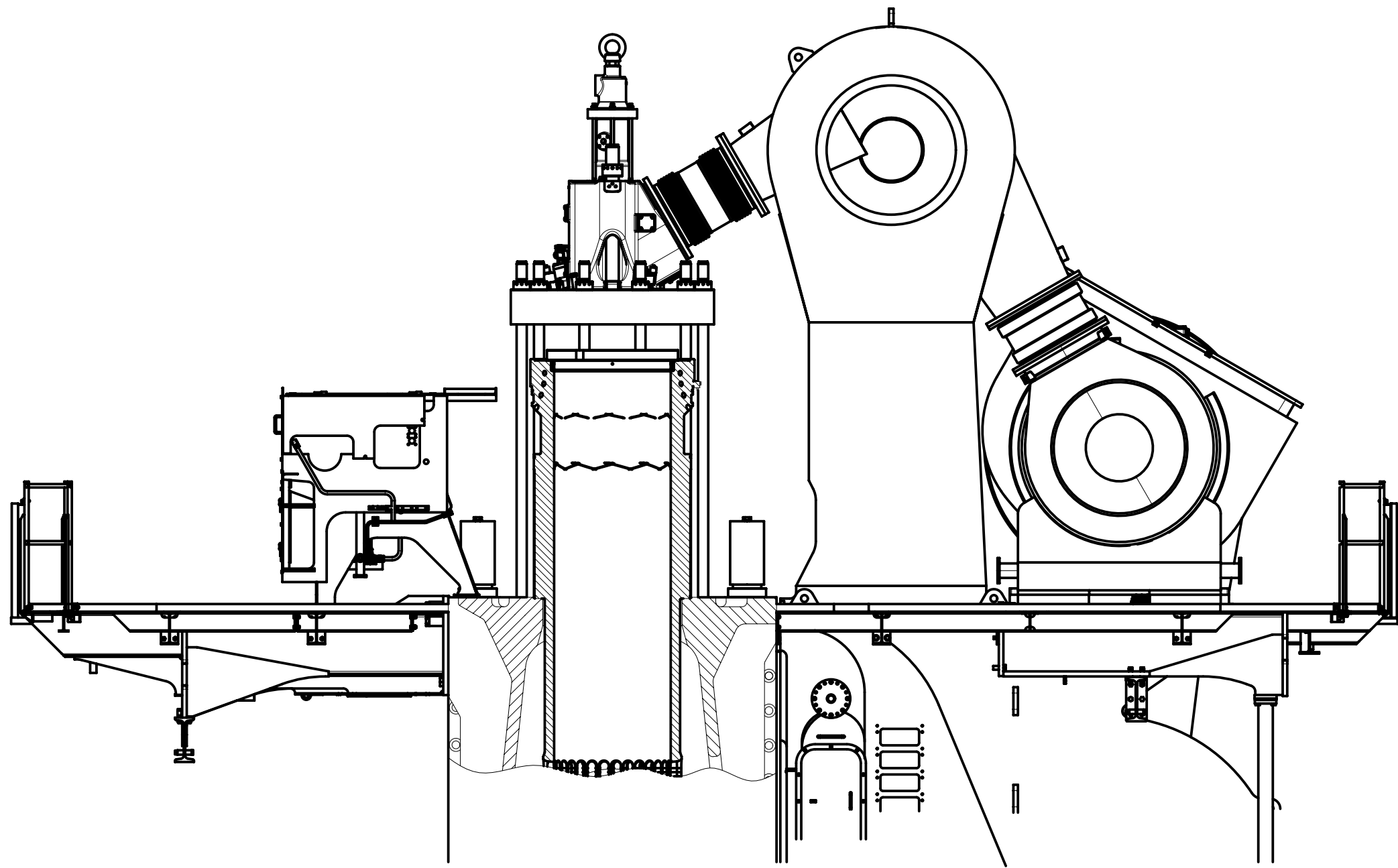
Zuganker zweiteilig
TWO-PART TIE ROD

A

DOUBLE-JIB CRANE

A

Krankapazität min. 2x6600 kg
CRANE CAPACITY MIN. 2x6600 kg



Voraussetzungen fuer diese Ausbautart

- alle Zylinderdeckel-Dehnbolzen auf der Brennstoffpumpenseite müssen zweiteilig ausgeführt werden
- zweiteilige Zuganker im Reparaturfall
- Spezialkran (Double-Jib)
- spezielle Hebwerkzeuge für den Kolben
- spezielle Hebwerkzeuge für den Zylindereinsatz

REQUIREMENTS FOR THIS DISMANTLING METHOD

- TWO-PIECE ELASTIC STUDS FOR CYLINDER COVER ON FUEL PUMP SIDE
- TWO-PART TIE ROD IN CASE OF REPAIR
- SPECIAL CRANE (DOUBLE-JIB)
- SPECIAL LIFTING TOOLS FOR PISTON
- SPECIAL LIFTING TOOLS FOR CYLINDER LINER

Standardausbau mit
Double-Jib Kran

Minimale Höhe für den vertikalen
Ausbau mit dem Double-Jib Kran

*Die Distanz von der obersten
Hakenposition bis zur
Decke variiert je nach der
ausgewählten Kranausführung

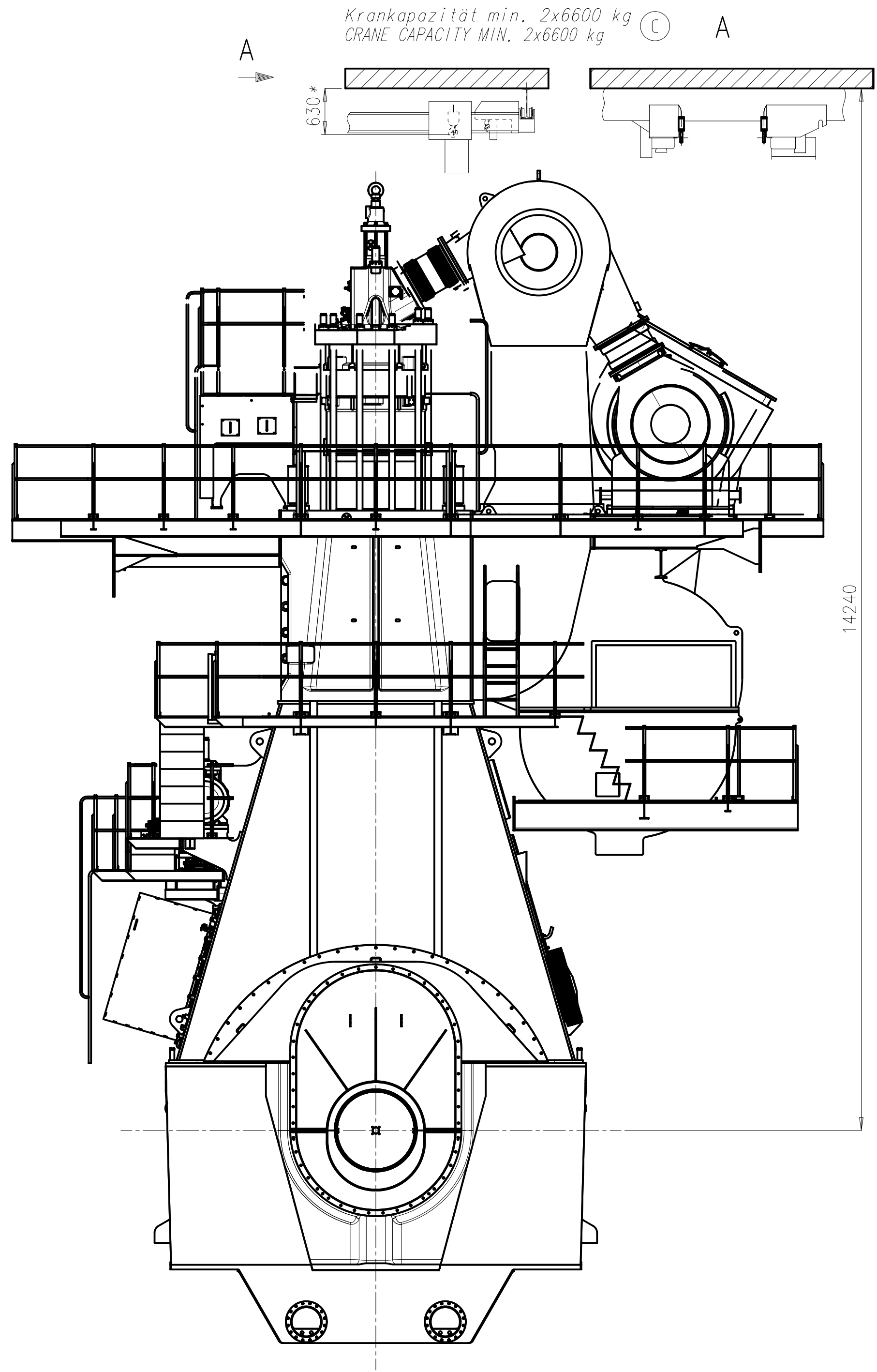
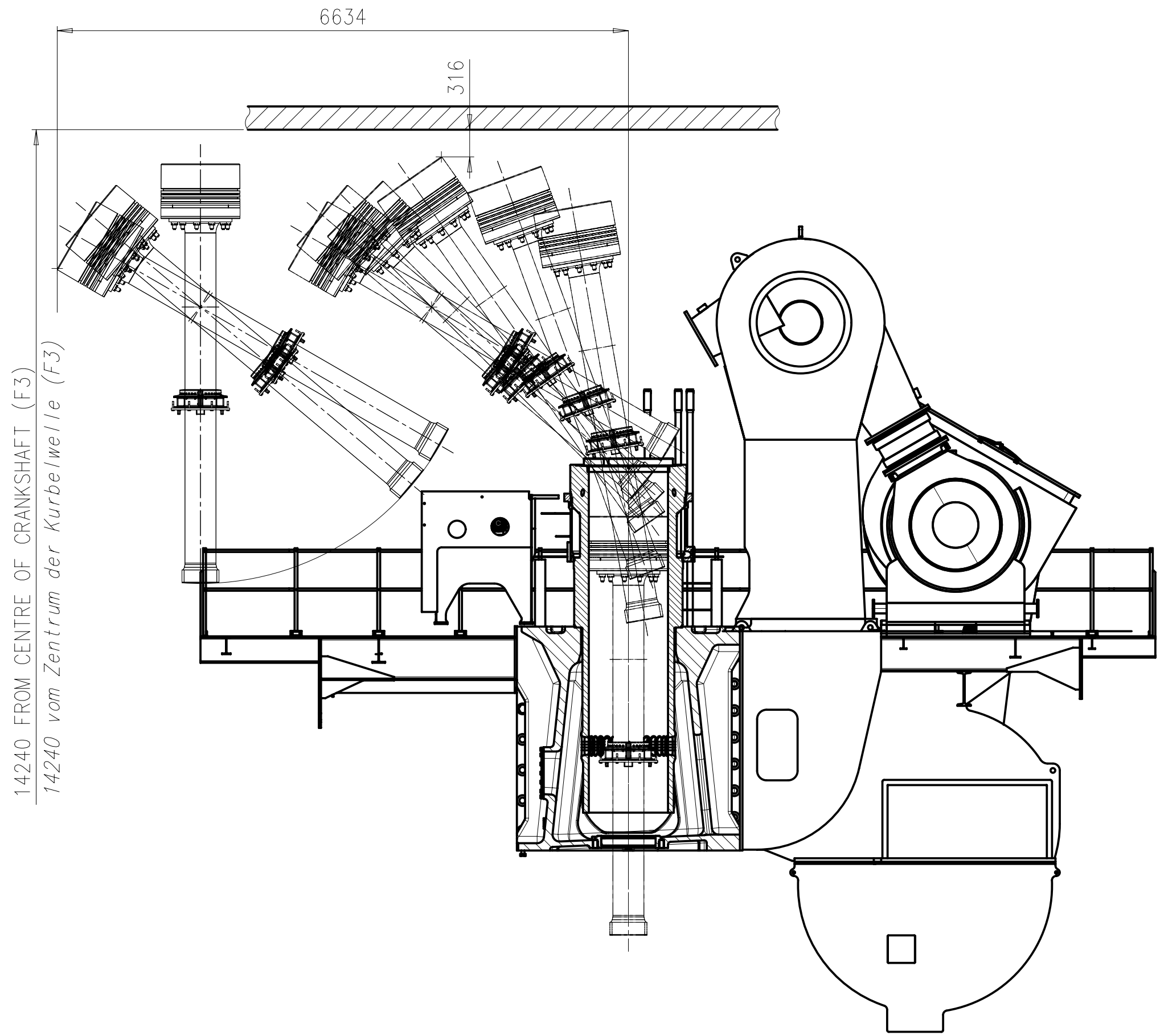
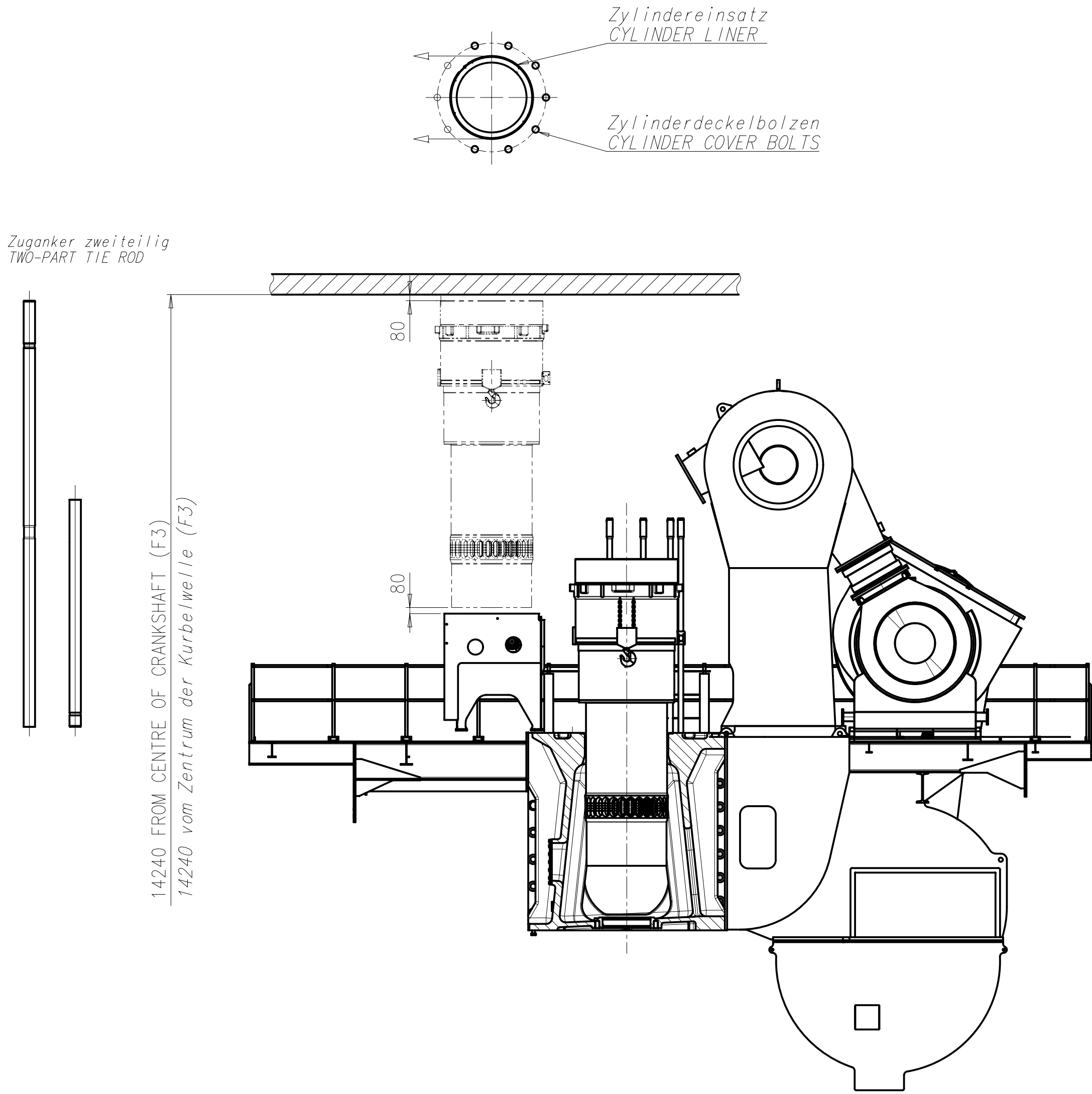
STANDARD DISMANTLING
WITH DOUBLE-JIB CRANE

MIN. HEIGHT FOR VERTICAL REMOVAL WITH DOUBLE-JIB CRANE: F2

*DISTANCE BETWEEN TOP POSITION OF HOOK
AND ENGINE ROOM CEILING VARIES DEPENDING
ON CRANE TYPE.

FOR VERTICAL REMOVAL WITH DOUBLE JIB E/R CRANE
BY FUCHS FOERDERTECHNIK AG

SURFACE PROTECTION SEE GROUP 0344		Made	05.06.2013	csc001	C.Schmutz	Scale	1:40	Size	A1	Page	2/3	Material	PAAD093149
TOLERANCING PRINCIPLE ISO8015		Chkd	05.06.2013	hke002 Kern		Design Group		Drawing ID	DAAD029670		Rev.	C	
GENERAL TOLERANCES ACCORDING TO ISO2768-mK		Appd	05.06.2013	bfr005 Frei		0812							



Voraussetzungen fuer diese Ausbauart

- zweiteilige Zylinderdeckel-Dehnbolzen auf der Brennstoffpumpenseite
- zweiteilige Zuganker im Reparaturfall
- Spezialkran (DOUBLE-JIB)
- spezielle Hebewerkzeuge für den Zylindereinsatz und den Kolben
- damit der Zylindereinsatz ausgebaut werden kann, müssen die benachbarten Zylinderdeckel demontiert werden.

REQUIREMENTS FOR THIS DISMANTLING METHOD

- TWO-PIECE ELASTIC STUDS FOR CYLINDER COVER ON FUEL PUMP SIDE
- TWO-PART TIE ROD IN CASE OF REPAIR
- SPECIAL CRANE (DOUBLE-JIB)
- SPECIAL LIFTING TOOLS FOR CYLINDER LINER AND PISTON
- FOR CYLINDER LINER DISMANTLING THE NEIGHBOURING CYLINDER COVERS NEED TO BE REMOVED, TOO

Standardausbau mit Double-Jib Kran


Minimale Hoehe fuer den gekippten Ausbau mit dem Double-Jib Kran: F3
Die Distanz von der obersten Hakenposition bis zur Decke variiert je nach der ausgewaehlten Kranausfuehrung

Für gekippten Ausbau mit Double-Jib E/R Kran von Fuchs Foerdertechnik AG

STANDARD DISMANTLING WITH DOUBLE-JIB CRANE

MIN. HEIGHT FOR TILTED REMOVAL WITH DOUBLE-JIB CRANE: F3
DISTANCE BETWEEN TOP POSITION OF HOOK AND ENGINE ROOM CEILING VARIES DEPENDING ON CRANE TYPE.

FOR TILTED REMOVAL WITH DOUBLE JIB E/R CRANE BY FUCHS FOERDERTECHNIK AG

F3										Free space for file		0-Code XXXXXX Standard ISO; JIS		Main Dwg.											
Modif.		A		EAAD084939		08.11.2013		B		EAAD085196		27.05.2014		C		EAAD091495		06.04.2020							
		Number		Drawn date				Number		Drawn date				Number		Drawn date				Number		Drawn date			
<div>WINGD Winterthur Gas & Diesel</div>										Product X92		DISMANTLING DIMENSIONS													
												Ausbaumasse													
Units		mm kg		NX				Basic Material														Net Weight 0,001			
SURFACE PROTECTION SEE GROUP 0344				Made		05.06.2013		csc001 C.Schmutz		Scale		1:40		Size		A1		Page		3/3		Material		PAAD093149	
TOLERANCING PRINCIPLE ISO8015				Chkd		05.06.2013		hke002 Kern		Design Group		0812		Drawing ID		DAAD029670						Rev.		C	
GENERAL TOLERANCES ACCORDING TO ISO2768-mK				Appd		05.06.2013		bfr005 Frei																	

WinGD-8X92_Engine-outline-views

TRACK CHANGES

DATE	SUBJECT	DESCRIPTION
2018-02-26	DRAWING SET	First web upload
2020-07-20	DAAD029670	Revised Dismantling Dimensions drawing has been updated.

DISCLAIMER

© Copyright by Winterthur Gas & Diesel Ltd.

All rights reserved. No part of this document may be reproduced or copied in any form or by any means (electronic, mechanical, graphic, photocopying, recording, taping or other information retrieval systems) without the prior written permission of the copyright owner.

THIS PUBLICATION IS DESIGNED TO PROVIDE AN ACCURATE AND AUTHORITATIVE INFORMATION WITH REGARD TO THE SUBJECT-MATTER COVERED AS WAS AVAILABLE AT THE TIME OF PRINTING. HOWEVER, THE PUBLICATION DEALS WITH COMPLICATED TECHNICAL MATTERS SUITED ONLY FOR SPECIALISTS IN THE AREA, AND THE DESIGN OF THE SUBJECT-PRODUCTS IS SUBJECT TO REGULAR IMPROVEMENTS, MODIFICATIONS AND CHANGES. CONSEQUENTLY, THE PUBLISHER AND COPYRIGHT OWNER OF THIS PUBLICATION CAN NOT ACCEPT ANY RESPONSIBILITY OR LIABILITY FOR ANY EVENTUAL ERRORS OR OMISSIONS IN THIS BOOKLET OR FOR DISCREPANCIES ARISING FROM THE FEATURES OF ANY ACTUAL ITEM IN THE RESPECTIVE PRODUCT BEING DIFFERENT FROM THOSE SHOWN IN THIS PUBLICATION. THE PUBLISHER AND COPYRIGHT OWNER SHALL UNDER NO CIRCUMSTANCES BE HELD LIABLE FOR ANY FINANCIAL CONSEQUENTIAL DAMAGES OR OTHER LOSS, OR ANY OTHER DAMAGE OR INJURY, SUFFERED BY ANY PARTY MAKING USE OF THIS PUBLICATION OR THE INFORMATION CONTAINED HEREIN.