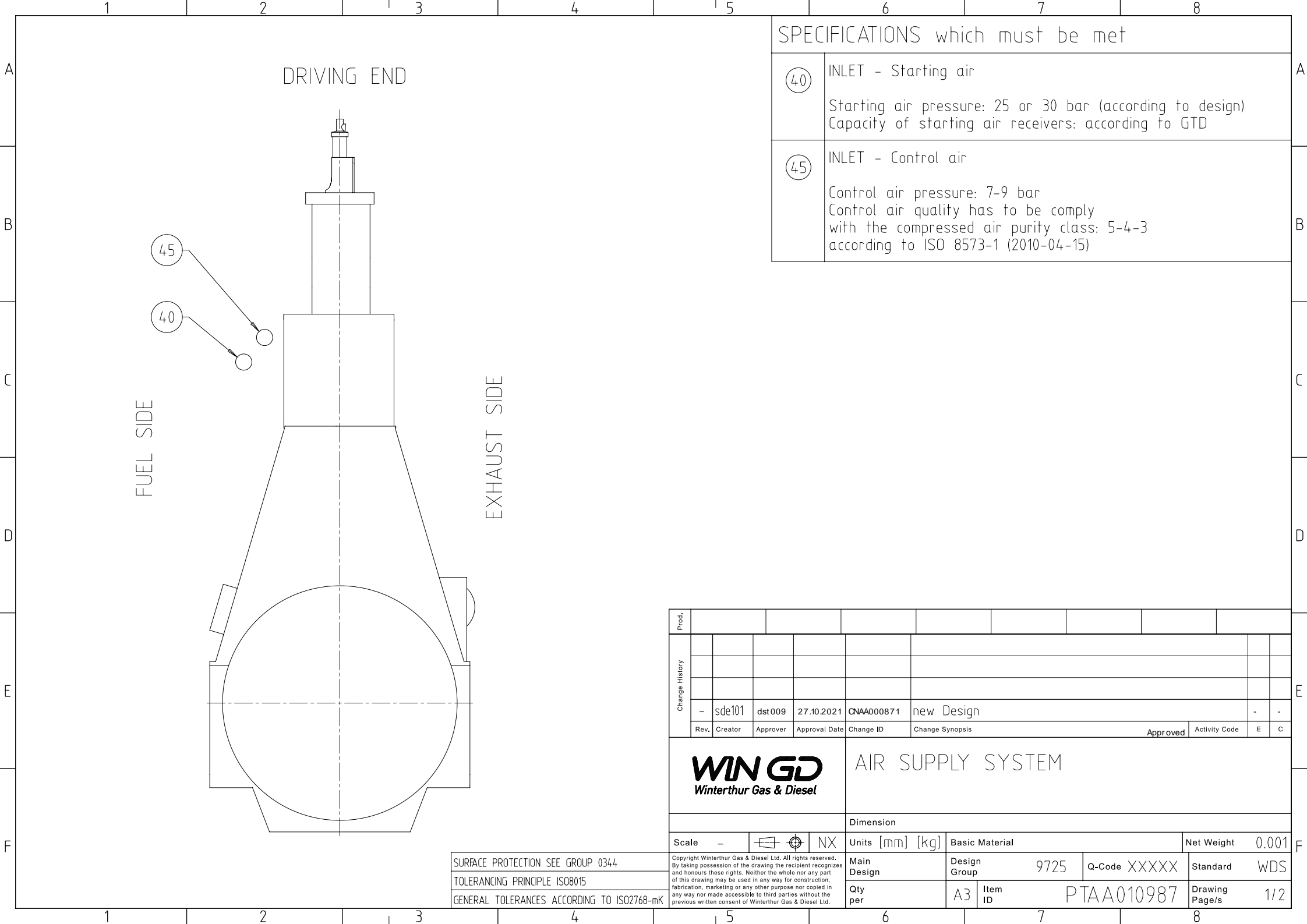


	1	2	3	4																																																														
A	<div><div>SURFACE PROTECTION SEE GROUP 03/44</div><div>TOLERANCING PRINCIPLE ISO8015</div><div>GENERAL TOLERANCES ACCORDING TO ISO2768-mK</div></div> <div><div>Available executions</div><table><tr><th>Execution No.</th><th>Material ID</th><th>Cylinder No.</th></tr><tr><td>1</td><td>PAAD322074</td><td>6-12</td></tr></table></div>				Execution No.	Material ID	Cylinder No.	1	PAAD322074	6-12	A																																																							
Execution No.	Material ID	Cylinder No.																																																																
1	PAAD322074	6-12																																																																
B					B																																																													
C					C																																																													
D	<div><div>NOTE</div><div>The above executions can be configured using the Engine Configurator. Detailed guidance for the executions is provided within the Marine Installation Manual (MIM). If a specific execution of interest is not shown in the above table, then it may still be under development or not available. For further information or in case of a project-specific request, WinGD must be contacted directly.</div><div>This publication is designed to provide accurate and authoritative information with regard to the subject-matter covered as it was available at the time of printing. However, the publication deals with complicated technical matters suited only for specialists in the area, and the design of the subject-products is subject to regular improvements, modifications and changes. Consequently, the publisher and copyright owner of this publication cannot accept any responsibility or liability for any eventual errors or omissions in this document or for discrepancies arising from the features of any actual item in the respective product being different from those shown in this publication. The publisher and copyright owner shall under no circumstances be held liable for any financial consequential damages or other loss, or any other damage or injury, suffered by any party making use of this publication or the information contained herein.</div></div>				D																																																													
E	<table><tr><td>Prod.</td><td colspan="2">X92-B</td><td></td><td></td><td></td><td></td><td></td><td></td><td></td></tr><tr><td rowspan="5">Change History</td><td></td><td></td><td></td><td></td><td></td><td colspan="3"></td><td></td><td></td></tr><tr><td></td><td></td><td></td><td></td><td></td><td colspan="3"></td><td></td><td></td></tr><tr><td></td><td></td><td></td><td></td><td></td><td colspan="3"></td><td></td><td></td></tr><tr><td>-</td><td>sde101</td><td>dst009</td><td>27.10.2021</td><td>CNAA000871</td><td colspan="3">new Design</td><td>-</td><td>-</td></tr><tr><td>Rev.</td><td>Creator</td><td>Approver</td><td>Approval Date</td><td>Change ID</td><td>Change Synopsis</td><td>Approved</td><td>Activity Code</td><td>E</td><td>C</td></tr></table>				Prod.	X92-B									Change History																															-	sde101	dst009	27.10.2021	CNAA000871	new Design			-	-	Rev.	Creator	Approver	Approval Date	Change ID	Change Synopsis	Approved	Activity Code	E	C	E
Prod.	X92-B																																																																	
Change History																																																																		
	-	sde101	dst009	27.10.2021	CNAA000871	new Design			-	-																																																								
	Rev.	Creator	Approver	Approval Date	Change ID	Change Synopsis	Approved	Activity Code	E	C																																																								
F	<div><div><div><div>WIN GD</div><div>Winterthur Gas &amp; Diesel</div></div><div><div>separate BOM available</div><div>Scale -  NX</div><div><div>Copyright Winterthur Gas &amp; Diesel Ltd. All rights reserved. By taking possession of the drawing the recipient recognizes and honours these rights. Neither the whole nor any part of this drawing may be used in any way for construction, fabrication, marketing or any other purpose nor copied in any way nor made accessible to third parties without the previous written consent of Winterthur Gas &amp; Diesel Ltd.</div></div></div><div><div>AIR SUPPLY SYSTEM</div><div>MIDS master drawing</div></div></div><table><tr><td colspan="2">Dimension</td><td colspan="2">Units [mm] [kg]</td><td colspan="2">Basic Material</td><td colspan="2">Net Weight</td><td colspan="2">0.001</td></tr><tr><td colspan="2">Main Design</td><td colspan="2">Design Group</td><td colspan="2">9725</td><td colspan="2">Q-Code</td><td colspan="2">XXXXXX</td></tr><tr><td colspan="2">Qty per</td><td colspan="2">A4</td><td colspan="2">Item ID</td><td colspan="2">PTAA015302</td><td colspan="2">Drawing Page/s</td></tr><tr><td colspan="2"></td><td colspan="2"></td><td colspan="2"></td><td colspan="2"></td><td colspan="2">1/1</td></tr></table></div>				Dimension		Units [mm] [kg]		Basic Material		Net Weight		0.001		Main Design		Design Group		9725		Q-Code		XXXXXX		Qty per		A4		Item ID		PTAA015302		Drawing Page/s										1/1		F																					
Dimension		Units [mm] [kg]		Basic Material		Net Weight		0.001																																																										
Main Design		Design Group		9725		Q-Code		XXXXXX																																																										
Qty per		A4		Item ID		PTAA015302		Drawing Page/s																																																										
								1/1																																																										

SEQ NO	QTY	Item ID	Item Name	Dimension	Standard-ID	Basic Material	Net Weight
1	1	PTAA010987	AIR SUPPLY SYSTEM				0
Prod.	6,7,8,9,10,11,12 X92-B						
Change History							
	A	sde101	dst009	27.10.2021	CNAA000871	Main Design/Drawing Introduced	4 3
	-	sde101	mhu019	22.03.2019		-	- -
	Rev.	Creator	Approver	Approval Date	Change ID	Change Synopsis	Activity Code E C
<div>WIN GD</div> <div>Winterthur Gas &amp; Diesel</div>			AIR SUPPLY SYSTEM				
Bill Of Material			Dimension				
Copyright <b>Winterthur Gas &amp; Diesel Ltd.</b> All rights reserved. By taking possession of the document the recipient recognizes and honours these rights. Neither the whole nor any part of this document may be used in any way for construction, fabrication, marketing or any other purpose nor copied in any way nor made accessible to third parties without the previous written consent of <b>Winterthur Gas &amp; Diesel Ltd.</b>			Units	[m] [kg]	Basic Material		Net Weight 0
			Main Design	Yes	Design Group	9725 Q-Code XXXXX	Standard WDS
			Qty per	Engine	A4	Item ID PAAD322074	BOM Page/s 01/01



SPECIFICATIONS which must be met	
40	INLET - Starting air  Starting air pressure: 25 or 30 bar (according to design) Capacity of starting air receivers: according to GTD
45	INLET - Control air  Control air pressure: 7-9 bar Control air quality has to be comply with the compressed air purity class: 5-4-3 according to ISO 8573-1 (2010-04-15)

Prod.																																																																																																																																																																																																																																																																																																																																																																																																																																																																																																																																																																																																																																																																																																																																																																																																																																																																																																																																																																																																																																																																																																																																																																																																																																																																																																																																																																																																																							
-------	--	--	--	--	--	--	--	--	--	--	--	--	--	--	--	--	--	--	--	--	--	--	--	--	--	--	--	--	--	--	--	--	--	--	--	--	--	--	--	--	--	--	--	--	--	--	--	--	--	--	--	--	--	--	--	--	--	--	--	--	--	--	--	--	--	--	--	--	--	--	--	--	--	--	--	--	--	--	--	--	--	--	--	--	--	--	--	--	--	--	--	--	--	--	--	--	--	--	--	--	--	--	--	--	--	--	--	--	--	--	--	--	--	--	--	--	--	--	--	--	--	--	--	--	--	--	--	--	--	--	--	--	--	--	--	--	--	--	--	--	--	--	--	--	--	--	--	--	--	--	--	--	--	--	--	--	--	--	--	--	--	--	--	--	--	--	--	--	--	--	--	--	--	--	--	--	--	--	--	--	--	--	--	--	--	--	--	--	--	--	--	--	--	--	--	--	--	--	--	--	--	--	--	--	--	--	--	--	--	--	--	--	--	--	--	--	--	--	--	--	--	--	--	--	--	--	--	--	--	--	--	--	--	--	--	--	--	--	--	--	--	--	--	--	--	--	--	--	--	--	--	--	--	--	--	--	--	--	--	--	--	--	--	--	--	--	--	--	--	--	--	--	--	--	--	--	--	--	--	--	--	--	--	--	--	--	--	--	--	--	--	--	--	--	--	--	--	--	--	--	--	--	--	--	--	--	--	--	--	--	--	--	--	--	--	--	--	--	--	--	--	--	--	--	--	--	--	--	--	--	--	--	--	--	--	--	--	--	--	--	--	--	--	--	--	--	--	--	--	--	--	--	--	--	--	--	--	--	--	--	--	--	--	--	--	--	--	--	--	--	--	--	--	--	--	--	--	--	--	--	--	--	--	--	--	--	--	--	--	--	--	--	--	--	--	--	--	--	--	--	--	--	--	--	--	--	--	--	--	--	--	--	--	--	--	--	--	--	--	--	--	--	--	--	--	--	--	--	--	--	--	--	--	--	--	--	--	--	--	--	--	--	--	--	--	--	--	--	--	--	--	--	--	--	--	--	--	--	--	--	--	--	--	--	--	--	--	--	--	--	--	--	--	--	--	--	--	--	--	--	--	--	--	--	--	--	--	--	--	--	--	--	--	--	--	--	--	--	--	--	--	--	--	--	--	--	--	--	--	--	--	--	--	--	--	--	--	--	--	--	--	--	--	--	--	--	--	--	--	--	--	--	--	--	--	--	--	--	--	--	--	--	--	--	--	--	--	--	--	--	--	--	--	--	--	--	--	--	--	--	--	--	--	--	--	--	--	--	--	--	--	--	--	--	--	--	--	--	--	--	--	--	--	--	--	--	--	--	--	--	--	--	--	--	--	--	--	--	--	--	--	--	--	--	--	--	--	--	--	--	--	--	--	--	--	--	--	--	--	--	--	--	--	--	--	--	--	--	--	--	--	--	--	--	--	--	--	--	--	--	--	--	--	--	--	--	--	--	--	--	--	--	--	--	--	--	--	--	--	--	--	--	--	--	--	--	--	--	--	--	--	--	--	--	--	--	--	--	--	--	--	--	--	--	--	--	--	--	--	--	--	--	--	--	--	--	--	--	--	--	--	--	--	--	--	--	--	--	--	--	--	--	--	--	--	--	--	--	--	--	--	--	--	--	--	--	--	--	--	--	--	--	--	--	--	--	--	--	--	--	--	--	--	--	--	--	--	--	--	--	--	--	--	--	--	--	--	--	--	--	--	--	--	--	--	--	--	--	--	--	--	--	--	--	--	--	--	--	--	--	--	--	--	--	--	--	--	--	--	--	--	--	--	--	--	--	--	--	--	--	--	--	--	--	--	--	--	--	--	--	--	--	--	--	--	--	--	--	--	--	--	--	--	--	--	--	--	--	--	--	--	--	--	--	--	--	--	--	--	--	--	--	--	--	--	--	--	--	--	--	--	--	--	--	--	--	--	--	--	--	--	--	--	--	--	--	--	--	--	--	--	--	--	--	--	--	--	--	--	--	--	--	--	--	--	--	--	--	--	--	--	--	--	--	--	--	--	--	--	--	--	--	--	--	--	--	--	--	--	--	--	--	--	--	--	--	--	--	--	--	--	--	--	--	--	--	--	--	--	--	--	--	--	--	--	--	--	--	--	--	--	--	--	--	--	--	--	--	--	--	--	--	--	--	--	--	--	--	--	--	--	--	--	--	--	--	--	--	--	--	--	--	--	--	--	--	--	--	--	--	--	--	--	--	--	--	--	--	--	--	--	--	--	--	--	--	--	--	--	--	--	--	--	--	--	--	--	--	--	--	--	--	--	--	--	--	--	--	--	--	--	--	--	--	--	--	--	--	--	--	--	--	--	--	--	--	--	--	--	--	--	--	--	--	--	--	--	--	--	--	--	--	--	--	--	--	--	--	--	--	--	--	--	--	--	--	--	--	--	--	--	--	--	--	--	--	--	--	--	--	--	--	--	--	--	--	--	--	--	--	--	--	--	--	--	--	--	--	--	--	--	--	--	--	--	--	--	--	--	--	--	--	--	--	--	--	--	--	--	--	--	--	--	--	--	--	--	--	--	--	--	--	--	--	--	--	--	--	--	--	--	--	--	--	--	--	--	--	--	--	--	--	--	--	--	--	--	--	--	--	--	--	--	--	--	--	--	--	--	--	--	--	--	--	--	--	--	--	--	--	--	--	--	--	--	--	--	--	--	--	--	--	--	--	--	--	--	--	--	--	--	--	--	--	--	--	--	--	--	--	--	--	--	--	--	--	--	--	--	--	--	--	--	--	--	--	--	--	--	--	--	--	--	--	--	--	--	--	--	--	--	--	--	--	--	--	--	--	--	--	--	--	--	--	--	--	--	--	--	--	--	--	--	--	--	--	--	--	--	--	--	--	--	--	--	--	--	--	--	--	--	--	--	--	--	--	--	--	--	--	--	--	--	--	--	--	--	--	--	--	--	--	--	--	--	--	--	--	--	--	--	--	--	--	--	--	--	--	--	--	--	--	--	--	--	--	--	--	--	--	--	--	--	--	--	--	--	--	--	--	--	--	--	--	--	--	--	--	--	--	--	--	--	--	--	--	--	--	--	--	--	--	--	--	--	--	--

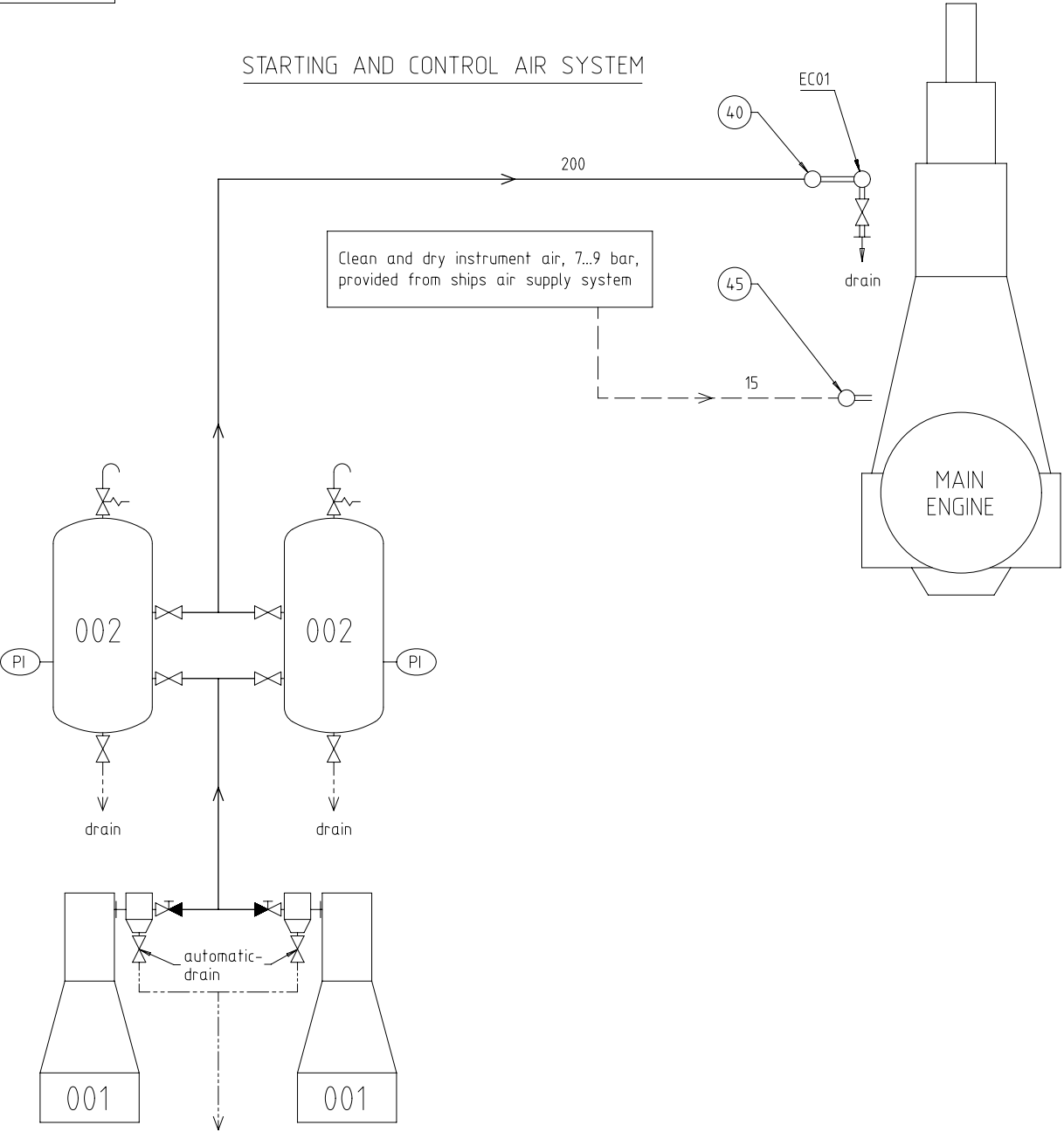
SURFACE PROTECTION SEE GROUP 0344

TOLERANCING PRINCIPLE ISO8015

GENERAL TOLERANCES ACCORDING TO ISO2768-mK

Copyright Winterthur Gas & Diesel Ltd. All rights reserved.  
By taking possession of the drawing the recipient recognizes and honours these rights. Neither the whole nor any part of this drawing may be used in any way for construction, fabrication, marketing or any other purpose nor copied in any way nor made accessible to third parties without the previous written consent of Winterthur Gas & Diesel Ltd.

STARTING AND CONTROL AIR SYSTEM



Pos.	System Components *1)
001	Starting air compressor 25/30 bar (capacity according to GTD)
002	Starting air receiver 25/30 bar (capacity according to GTD)

Pos.	Engine Connections *2)
40	INLET - Starting air
45	INLET - Control air (for control system and air spring)

Pos.	Engine Components *3)
EC01	Distribution pipe with automatic starting air shut-off valve

Remarks:

- Drain plugs and drain cocks to be installed where necessary.
- Pipe diameters for starting air compressors and auxiliary equipment according to suppliers recommendations.

\*1) Refer to the "Pipe Connection Plan" for the execution and location of the engine pipe connections.

\*2) To be delivered by external supplier and to be installed by the shipyard.

\*3) To be delivered by the engine builder. i.e. already equipped on engine side.

— Starting air feed pipes  
- - - Control air pipes  
— Ancillary equipment pipes  
- - - - - Drain pipes  
= = = Pipes on engine  
○ Pipe connections

## MIDS – WINGD X92-B – Starting Air System (DG9725)

### TRACK CHANGES

DATE	SUBJECT	DESCRIPTION
2019-03-22	DRAWING SET	First web upload
2021-12-21	PAAD322074 PTAA015302	Main and system drg.- new revision

### DISCLAIMER

© Copyright by Winterthur Gas & Diesel Ltd.

All rights reserved. No part of this document may be reproduced or copied in any form or by any means (electronic, mechanical, graphic, photocopying, recording, taping or other information retrieval systems) without the prior written permission of the copyright owner.

THIS PUBLICATION IS DESIGNED TO PROVIDE AN ACCURATE AND AUTHORITATIVE INFORMATION WITH REGARD TO THE SUBJECT-MATTER COVERED AS WAS AVAILABLE AT THE TIME OF PRINTING. HOWEVER, THE PUBLICATION DEALS WITH COMPLICATED TECHNICAL MATTERS SUITED ONLY FOR SPECIALISTS IN THE AREA, AND THE DESIGN OF THE SUBJECT-PRODUCTS IS SUBJECT TO REGULAR IMPROVEMENTS, MODIFICATIONS AND CHANGES. CONSEQUENTLY, THE PUBLISHER AND COPYRIGHT OWNER OF THIS PUBLICATION CAN NOT ACCEPT ANY RESPONSIBILITY OR LIABILITY FOR ANY EVENTUAL ERRORS OR OMISSIONS IN THIS BOOKLET OR FOR DISCREPANCIES ARISING FROM THE FEATURES OF ANY ACTUAL ITEM IN THE RESPECTIVE PRODUCT BEING DIFFERENT FROM THOSE SHOWN IN THIS PUBLICATION. THE PUBLISHER AND COPYRIGHT OWNER SHALL UNDER NO CIRCUMSTANCES BE HELD LIABLE FOR ANY FINANCIAL CONSEQUENTIAL DAMAGES OR OTHER LOSS, OR ANY OTHER DAMAGE OR INJURY, SUFFERED BY ANY PARTY MAKING USE OF THIS PUBLICATION OR THE INFORMATION CONTAINED HEREIN.