

1 2 3 4 5 6 7 8

A

B

C

D

E

F

A

B

C

D

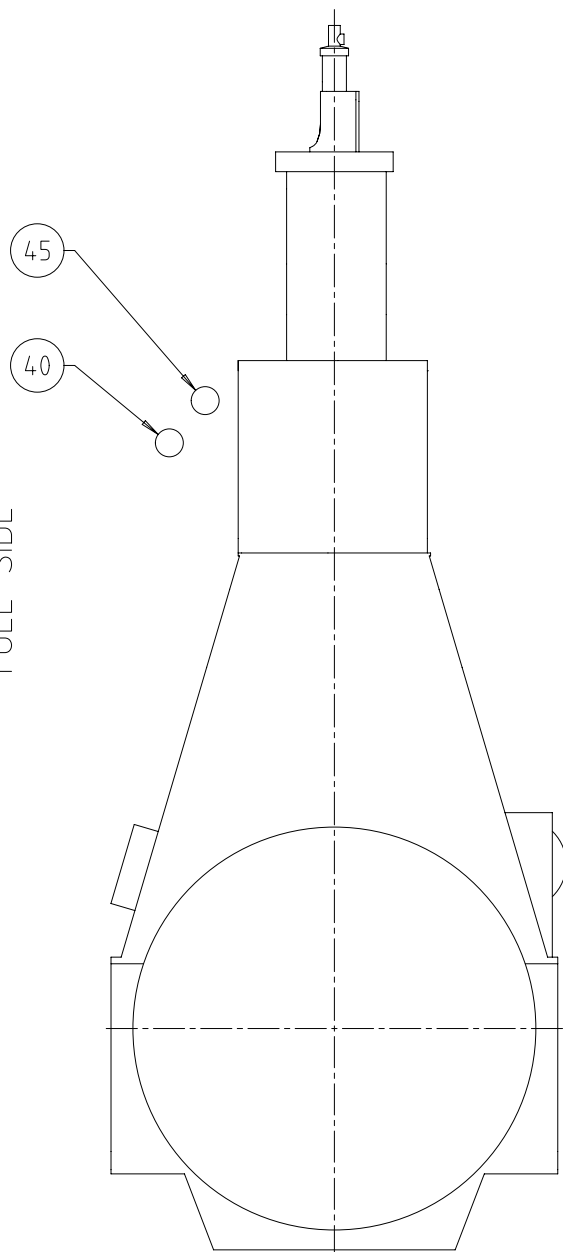
Approved

UID - DIMENSIONAL DRAWING - Confidential

DRIVING END

FUEL SIDE

EXHAUST SIDE



SPECIFICATIONS which must be met

- ④① INLET - Starting air

Starting air pressure: 25 or 30 bar (according to design)

Capacity of starting air receivers: according to GTD
- ④② INLET - Control air

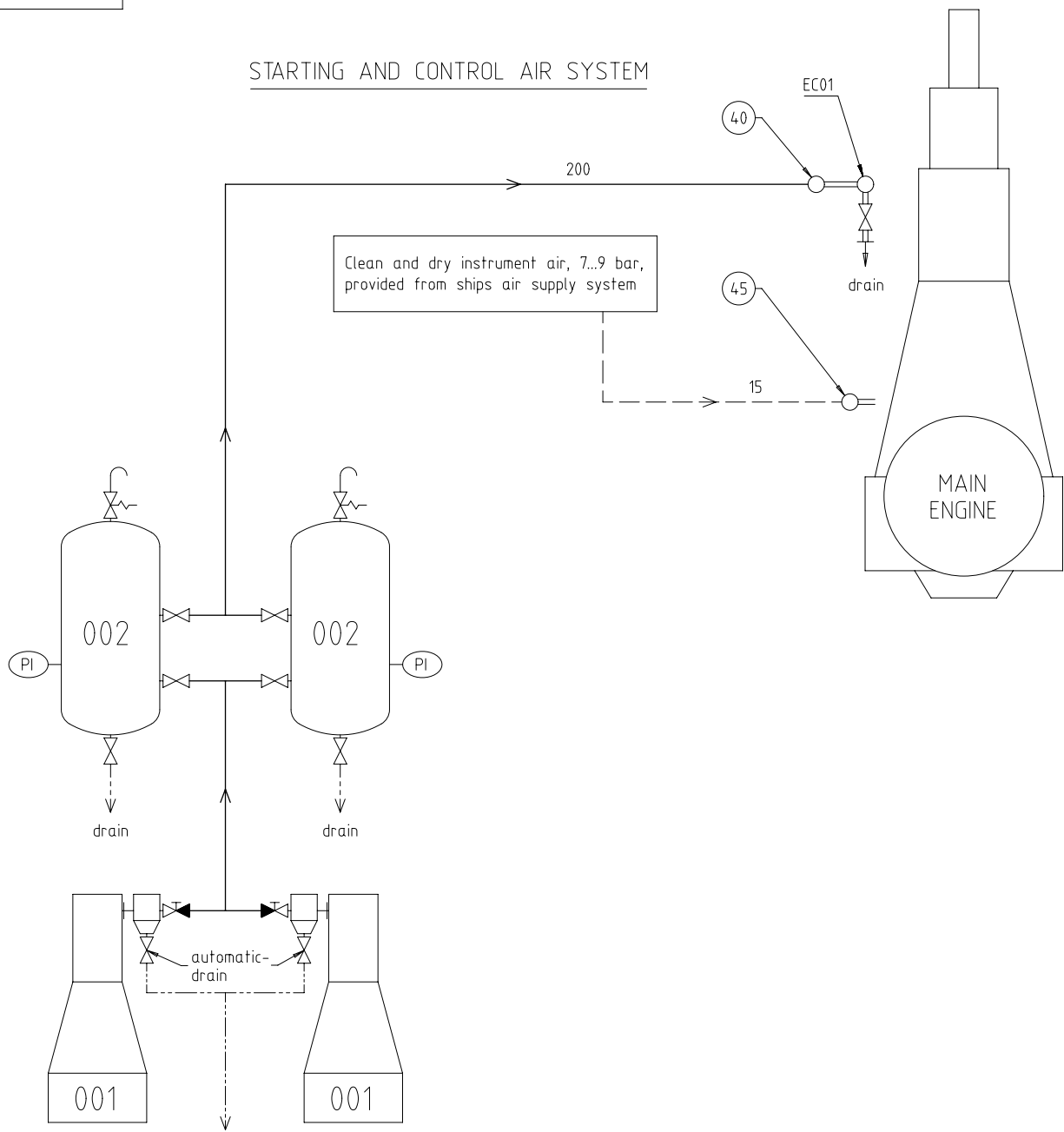
Control air pressure: 7-9 bar

Control air quality has to be comply with the compressed air purity class: 2-4-2 according to ISO 8573-1 (2010-04-15)

Free space for lic.									Q-Code	Main Drw.			
									XXXXXX		H		
								Standard					
								ISO; JIS					
Modif.	○		○		○		○						
	Number	Drawn date	Number	Drawn date	Number	Drawn date	Number	Drawn date					
		Product		STARTING AIR SYSTEM									
		W6-12X92-B		Anlassluftsystem									
Units	mm kg	NX		Basic Material		Net Weight		0,001					
SURFACE PROTECTION SEE GROUP 0344		Made	13.03.2019 Sudant Deogade		Scale	-	Size	A3	Page	1/2	Material ID	PAAD322074	
TOLERANCING PRINCIPLE ISO8015		Chkd	21.03.2019 wwa008 Wang		Design Group		9725		Drawing ID		DAAD113266	Rev.	-
GENERAL TOLERANCES ACCORDING TO ISO2768-mK		Appd	22.03.2019 mhu019 Hug										

SYSTEM PROPOSAL

STARTING AND CONTROL AIR SYSTEM



Pos.	System Components *1)
001	Starting air compressor 25/30 bar (capacity according to GTD)
002	Starting air receiver 25/30 bar (capacity according to GTD)

Pos.	Engine Connections *2)
(40)	INLET - Starting air
(45)	INLET - Control air (for control system and air spring)

Pos.	Engine Components *3)
EC01	Distribution pipe with automatic starting air shut-off valve

Remarks:-

- Drain plugs and drain cocks to be installed where necessary.
- Pipe diameters for starting air compressors and auxiliary equipment according to suppliers recommendations.

\*1) Refer to the "Pipe Connection Plan" for the execution and location of the engine pipe connections.

\*2) To be delivered by external supplier and to be installed by the shipyard.

\*3) To be delivered by the engine builder. i.e. already equipped on engine side.

- Starting air feed pipes
- - - Control air pipes
- Ancillary equipment pipes
- · - · - · Drain pipes
- ==== Pipes on engine
- Pipe connections

Modif.	Free space for ill.						Q-Code	XXXXXX	Main
							Standard	ISO; JIS	Drw.
	Number	Drawn date	Number	Drawn date	Number	Drawn date	Number	Drawn date	
		Product		STARTING AIR SYSTEM		Net Weight 0,001			
		W6-12X92-B		Anlassluftsystem					
Units	mm kg	NX	Basic Material						
SURFACE PROTECTION SEE GROUP 034.4	Made	13.03.2019	Sudant	Deogade	Scale	-	Size	A2	
TOLERANCING PRINCIPLE ISO8015	Chkd	21.03.2019	wwa008	Wang	Design Group	Page		2/2	
GENERAL TOLERANCES ACCORDING TO ISO2768-mK	Appd	22.03.2019	mhu019	Hug	9725	Material	PAAD322074		
						Drawing	DAAD113266		
						Rev.	-		

**MIDS – WINGD X92-B – Starting Air System (DG9725)**

**TRACK CHANGES**

DATE	SUBJECT	DESCRIPTION
2019-03-22	DRAWING SET	First web upload

**DISCLAIMER**

© Copyright by Winterthur Gas & Diesel Ltd.

All rights reserved. No part of this document may be reproduced or copied in any form or by any means (electronic, mechanical, graphic, photocopying, recording, taping or other information retrieval systems) without the prior written permission of the copyright owner.

THIS PUBLICATION IS DESIGNED TO PROVIDE AN ACCURATE AND AUTHORITATIVE INFORMATION WITH REGARD TO THE SUBJECT-MATTER COVERED AS WAS AVAILABLE AT THE TIME OF PRINTING. HOWEVER, THE PUBLICATION DEALS WITH COMPLICATED TECHNICAL MATTERS SUITED ONLY FOR SPECIALISTS IN THE AREA, AND THE DESIGN OF THE SUBJECT-PRODUCTS IS SUBJECT TO REGULAR IMPROVEMENTS, MODIFICATIONS AND CHANGES. CONSEQUENTLY, THE PUBLISHER AND COPYRIGHT OWNER OF THIS PUBLICATION CAN NOT ACCEPT ANY RESPONSIBILITY OR LIABILITY FOR ANY EVENTUAL ERRORS OR OMISSIONS IN THIS BOOKLET OR FOR DISCREPANCIES ARISING FROM THE FEATURES OF ANY ACTUAL ITEM IN THE RESPECTIVE PRODUCT BEING DIFFERENT FROM THOSE SHOWN IN THIS PUBLICATION. THE PUBLISHER AND COPYRIGHT OWNER SHALL UNDER NO CIRCUMSTANCES BE HELD LIABLE FOR ANY FINANCIAL CONSEQUENTIAL DAMAGES OR OTHER LOSS, OR ANY OTHER DAMAGE OR INJURY, SUFFERED BY ANY PARTY MAKING USE OF THIS PUBLICATION OR THE INFORMATION CONTAINED HEREIN.