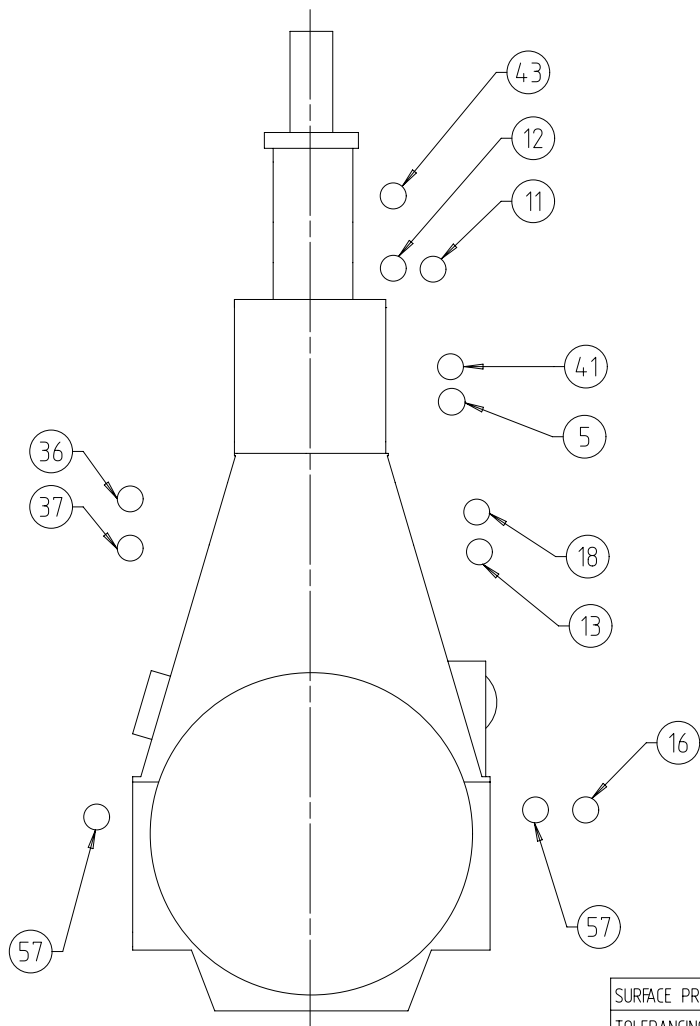


SEQ NO	QTY	Item ID	Item Name	Dimension	Standard-ID	Basic Material	Net Weight	
3	1	PAAD303146	LEAKAGE COLLECTION/WASHING SYS.				0.001	
Prod.	6,7,8,9,10,11,12 X92-B							
Change History								
	-	sde101	mhu019	21.03.2019	EAAD783943	-	-	
	Rev.	Creator	Approver	Approval Date	Change ID	Change Synopsis	Activity Code	E C
<div>WIN GD Winterthur Gas & Diesel</div>			LEAKAGE COLLECTION/WASHING SYS.					
Bill Of Material			Dimension					
Copyright Winterthur Gas & Diesel Ltd. All rights reserved. By taking possession of the document the recipient recognizes and honours these rights. Neither the whole nor any part of this document may be used in any way for construction, fabrication, marketing or any other purpose nor copied in any way nor made accessible to third parties without the previous written consent of Winterthur Gas & Diesel Ltd.			Units		Basic Material		Net Weight	
			Main Design		Design Group		Q-Code	Standard
			Qty per	Engine	A4	Item ID	BOM Page/s	
		[m] [kg]				0.001		
Yes		9724	XXXXX		WDS			
PAAD303409				01/01				



SEQ NO	QTY	Item ID	Item Name	Dimension	Standard-ID	Basic Material	Net Weight
002	1	107.425.369.500	SLUDGE OIL TRAP				0.001
Prod.	X92-B						
Change History							
	B	npa101	mhu019	08.11.2023	CNAA004776	Drawing updated	- -
	A	sde101	mhu019	19.01.2022	CNAA001373	drawing updated	4 3
	-	sde101	mhu019	21.03.2019	EAAD783943	-	- -
	Rev.	Creator	Approver	Approval Date	Change ID	Change Synopsis	Approved Activity Code E C
<div>WIN GD</div> <div>Winterthur Gas & Diesel</div>				LEAKAGE COLLECTION/WASHING SYS. SYSTEM DIAGRAM			
Bill Of Material				Dimension			
Copyright Winterthur Gas & Diesel Ltd. All rights reserved. By taking possession of the document the recipient recognizes and honours these rights. Neither the whole nor any part of this document may be used in any way for construction, fabrication, marketing or any other purpose nor copied in any way nor made accessible to third parties without the previous written consent of Winterthur Gas & Diesel Ltd.				Units	[m] [kg]	Basic Material	Net Weight 0.001
				Main Design		Design Group 9724 Q-Code X X M	Standard WDS
				Qty per	A4	Item ID PAAD303146	BOM Page/s 01/01

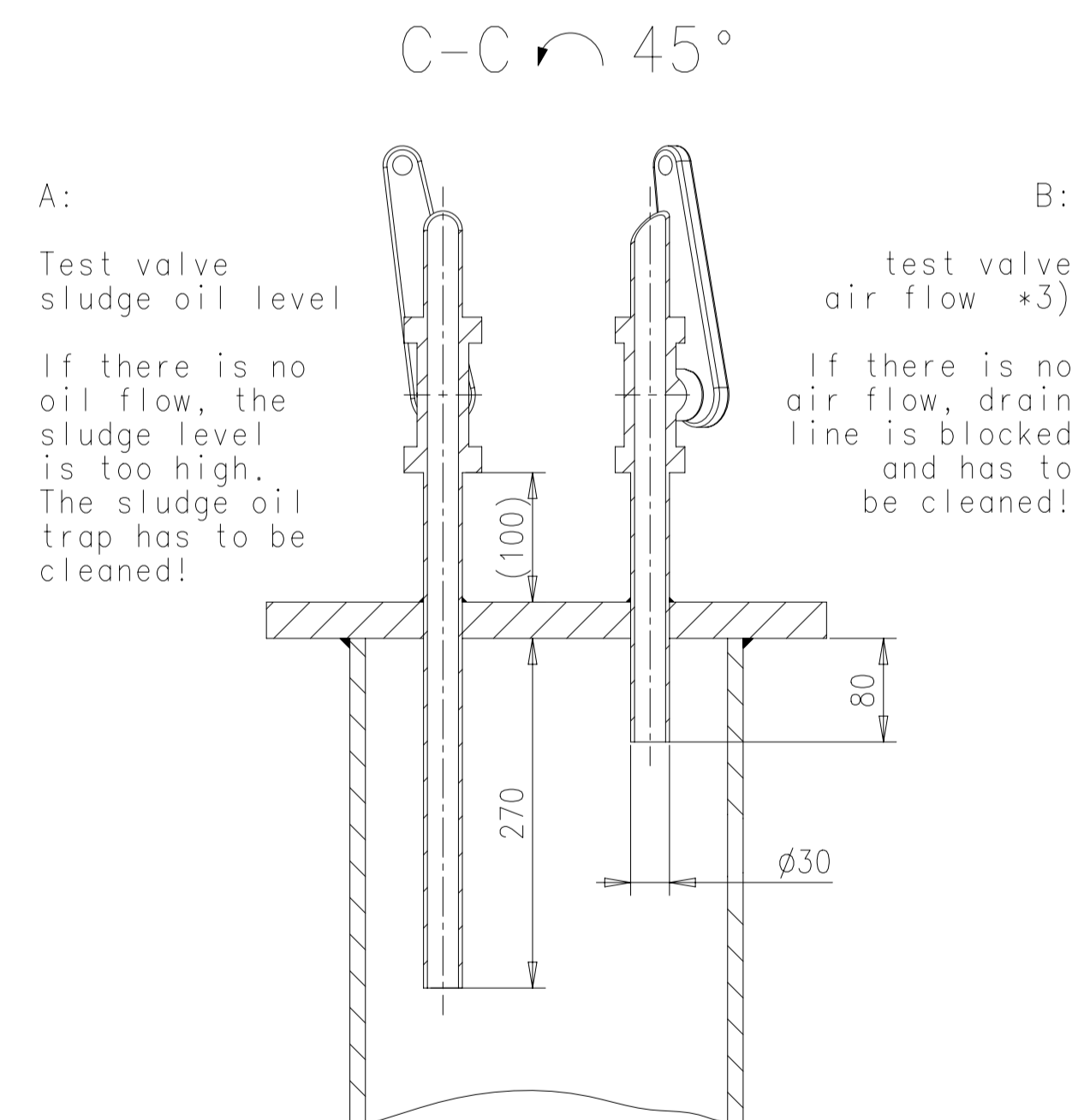
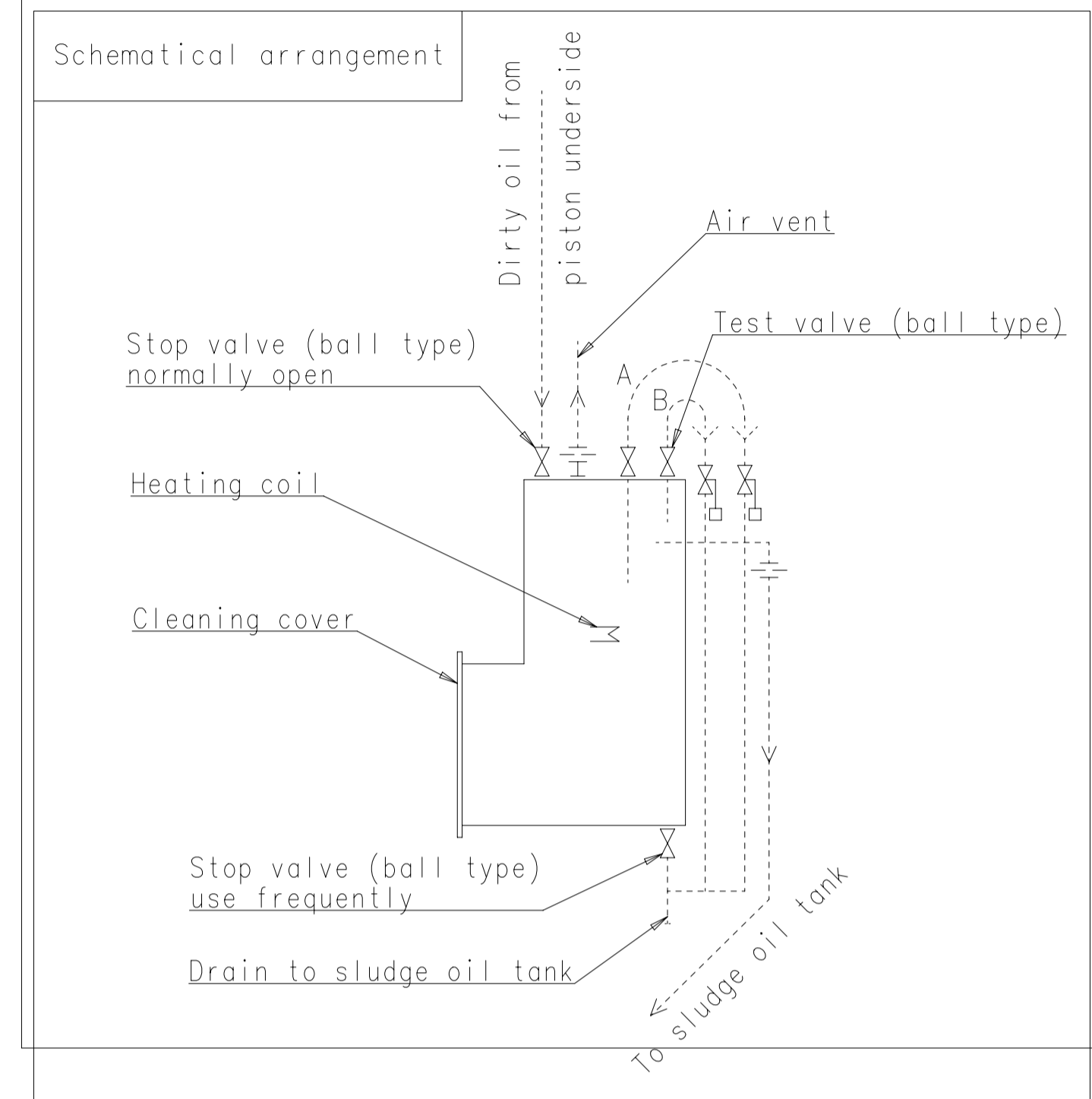
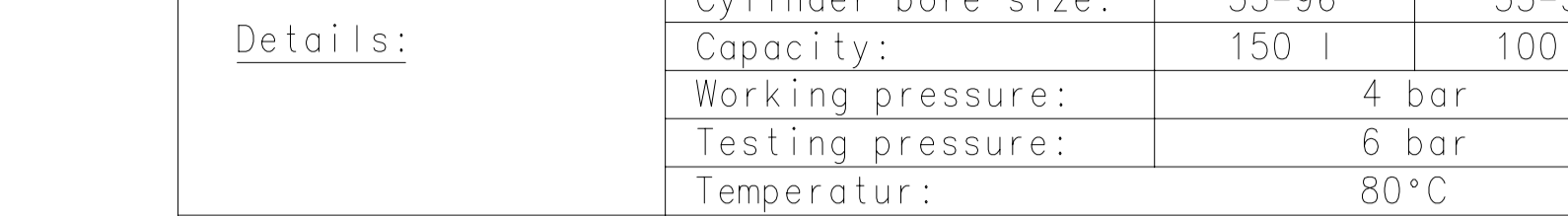
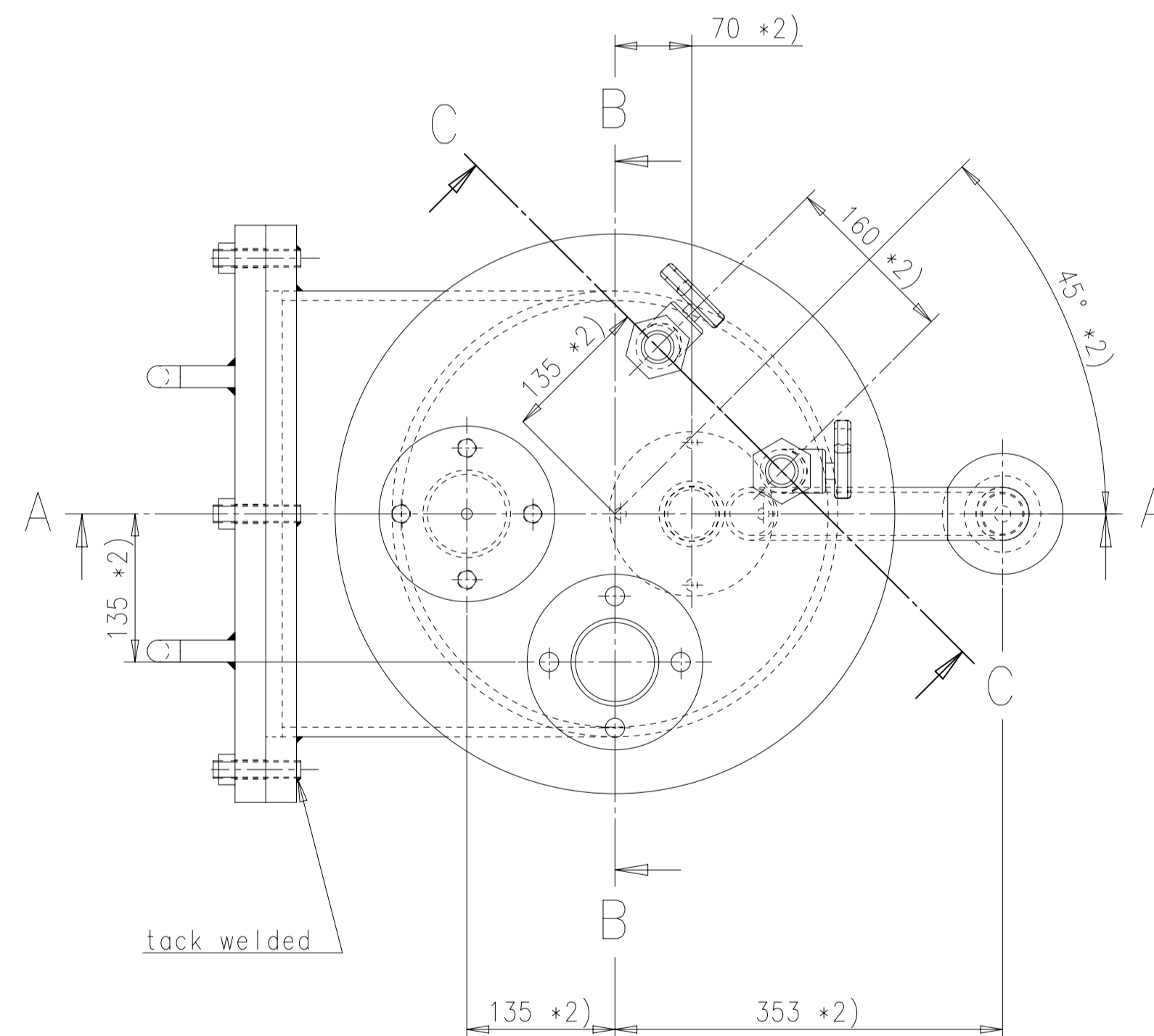
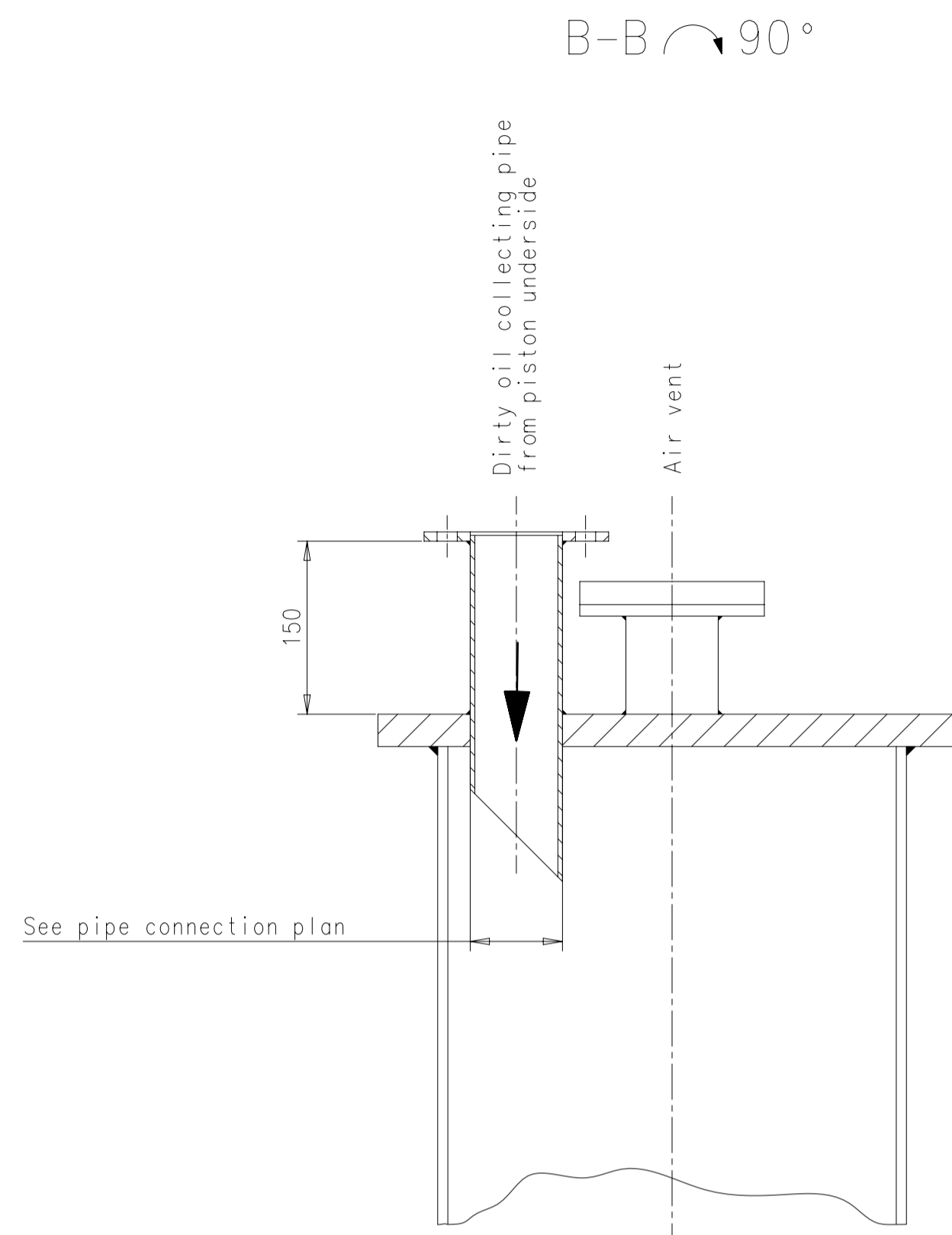
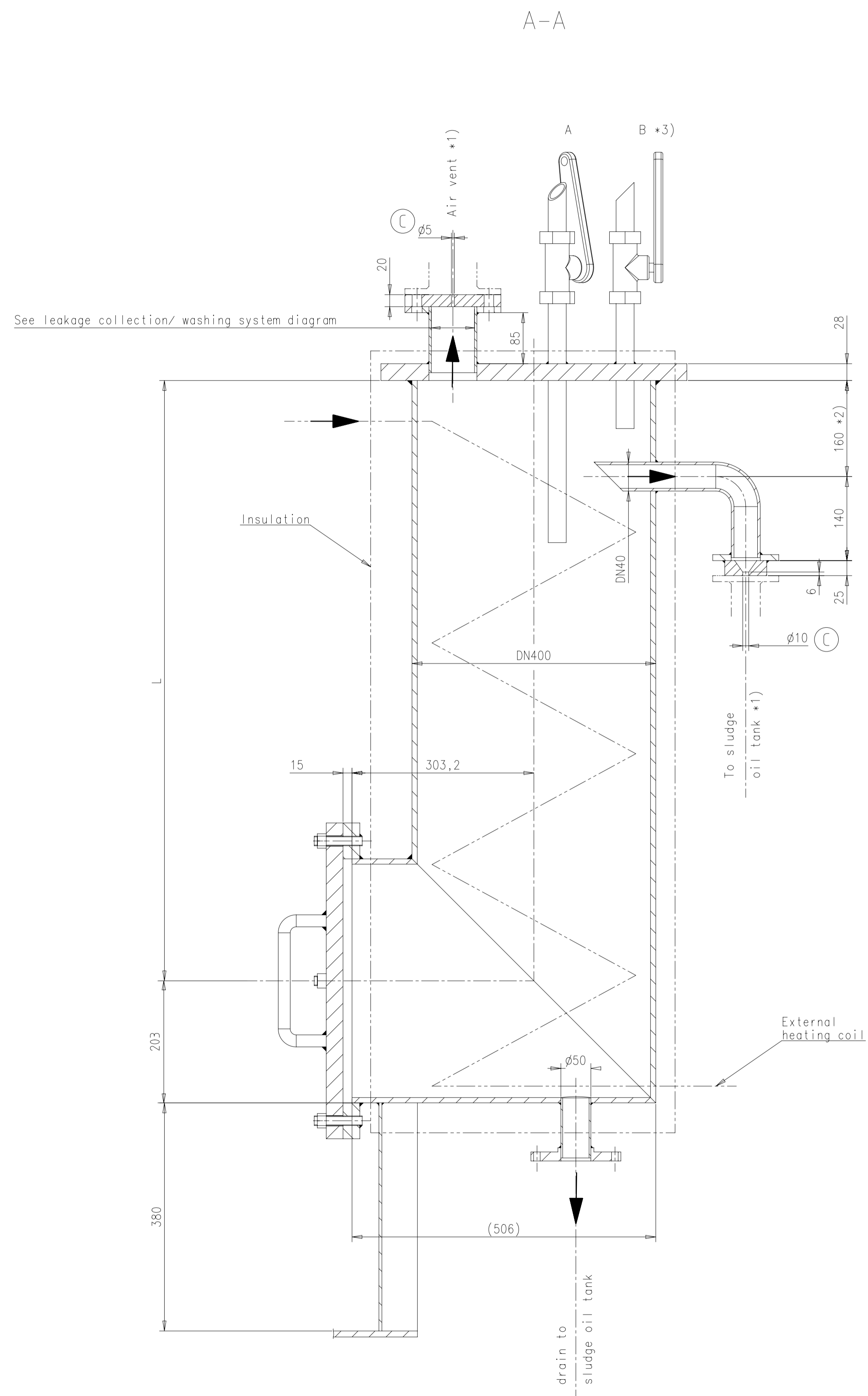
SPECIFICATION which must be met at the engine interface connections ⑧


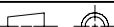
④1	OUTLET - Venting crankcase - Venting to funnel - Must not be connected to other venting pipes	⑤	OUTLET - Cylinder cooling water drain. - Gravity flow to cooling water drain tank or appropriate tank
④3	OUTLET - Venting turbocharger - Venting to funnel - Minimum inclination according to TC suppliers specification - Must not be connected to other venting pipes	⑪	INLET - Washing water SAC - From fresh water hydrophore system, supply pressure: 2.5 bar
⑤7	OUTLET - Various leakages - Gravity flow to sludge tank or appropriate tank	⑫	INLET - Air for cleaning plants TC and SAC - Working air, supply pressure: 7-9 bar
		⑬	OUTLET - Oily water from scavenge air receiver - Gravity flow to oily water tank or appropriate tank
		⑯6	OUTLET - SAC condensate water - Gravity flow to bilge water tank or appropriate tank
		⑯8	OUTLET - SAC venting - Free flow outside of engine room
		③6	OUTLET - Dirty oil piston underside - Flow with SAC pressure to sludge oil trap or appropriate arrangement - Min. inclination of drain pipe: 60 % - Must not be connected to other drain pipes
		③7	OUTLET - Leakage oil gland box - Gravity flow to sludge tank or appropriate tank



SURFACE PROTECTION SEE GROUP 0344
TOLERANCING PRINCIPLE ISO8015
GENERAL TOLERANCES ACCORDING TO ISO2768-mK

Prod.	X92-B													
Change History	B	npa101	mhu019	08.11.2023	CNAA004776	Drawing updated					-	-		
	A	sde101	mhu019	19.01.2022	CNAA001373	drawing updated					4	3		
	-	sde101	mhu019	21.03.2019	EAAD783943	-					-	-		
	Rev.	Creator	Approver	Approval Date	Change ID	Change Synopsis					Approved	Activity Code	E	C
	<div> Winterthur Gas & Diesel</div>					LEAKAGE COLLECTION/WASHING SYS. SYSTEM DIAGRAM								
separate BOM available					Dimension									
Scale		-		NX	Units [mm] [kg]		Basic Material				Net Weight		0.001	
Copyright Winterthur Gas & Diesel Ltd. All rights reserved. By taking possession of the drawing the recipient recognizes and honours these rights. Neither the whole nor any part of this drawing may be used in any way for construction, fabrication, marketing or any other purpose not copied in any way nor made accessible to third parties without the previous written consent of Winterthur Gas & Diesel Ltd.					Main Design		Design Group		9724		Q-Code X X M		Standard WDS	
Qty per		A3		Item ID		PAAD303146				Drawing Page/s		1/2		



Free space for file:		Q-Code XXXXXX Standard ISO: JIS		Main Draw.	
Modif.	A	EAAD084051	22.01.2013	B	EAAD087849
		Number	Drawn date		Number
				C	EAAD089439
					Number
					Drawn date
					Number
					Drawn date
 WIN GD <i>Winterthur Gas & Diesel</i>		Product W-2S		SLUDGE OIL TRAP	
Units	mm kg	XX		Basic Material	
Net Weight 0,001					
SURFACE PROTECTION SEE GROUP 0344		Make	31.08.2009	J.BAUMANN	Scale 1:5
TOLERANCE PRINCIPLE ISO8015		Chkd			Design Group
GENERAL TOLERANCES ACCORDING TO ISO2768-mK		Appd	13.11.2009	JBA029 Baumann	9724
		Drawing ID	107.425.369		Rev. C

MIDS – Leakage Collection and Washing System (DG9724)

WinGD X92-B

TRACK CHANGES

DATE	SUBJECT	DESCRIPTION
2019-03-22	DRAWING SET	First web upload
2023-11-08	PAAD303146-B	New revision

DISCLAIMER

© Copyright by Winterthur Gas & Diesel Ltd.

All rights reserved. No part of this document may be reproduced or copied in any form or by any means (electronic, mechanical, graphic, photocopying, recording, taping or other information retrieval systems) without the prior written permission of the copyright owner.

THIS PUBLICATION IS DESIGNED TO PROVIDE AN ACCURATE AND AUTHORITATIVE INFORMATION WITH REGARD TO THE SUBJECT-MATTER COVERED AS WAS AVAILABLE AT THE TIME OF PRINTING. HOWEVER, THE PUBLICATION DEALS WITH COMPLICATED TECHNICAL MATTERS SUITED ONLY FOR SPECIALISTS IN THE AREA, AND THE DESIGN OF THE SUBJECT-PRODUCTS IS SUBJECT TO REGULAR IMPROVEMENTS, MODIFICATIONS AND CHANGES. CONSEQUENTLY, THE PUBLISHER AND COPYRIGHT OWNER OF THIS PUBLICATION CAN NOT ACCEPT ANY RESPONSIBILITY OR LIABILITY FOR ANY EVENTUAL ERRORS OR OMISSIONS IN THIS BOOKLET OR FOR DISCREPANCIES ARISING FROM THE FEATURES OF ANY ACTUAL ITEM IN THE RESPECTIVE PRODUCT BEING DIFFERENT FROM THOSE SHOWN IN THIS PUBLICATION. THE PUBLISHER AND COPYRIGHT OWNER SHALL UNDER NO CIRCUMSTANCES BE HELD LIABLE FOR ANY FINANCIAL CONSEQUENTIAL DAMAGES OR OTHER LOSS, OR ANY OTHER DAMAGE OR INJURY, SUFFERED BY ANY PARTY MAKING USE OF THIS PUBLICATION OR THE INFORMATION CONTAINED HEREIN.