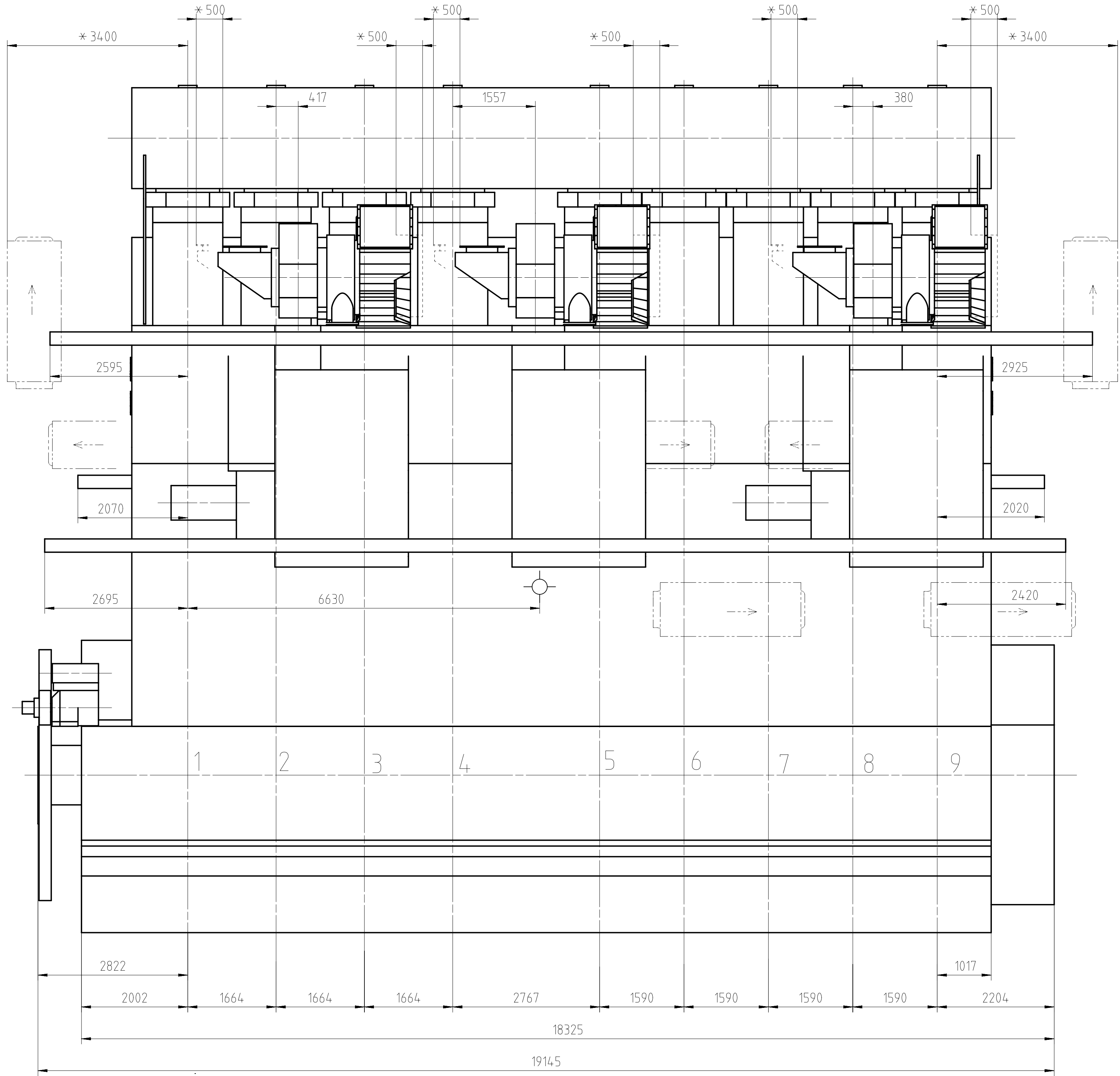


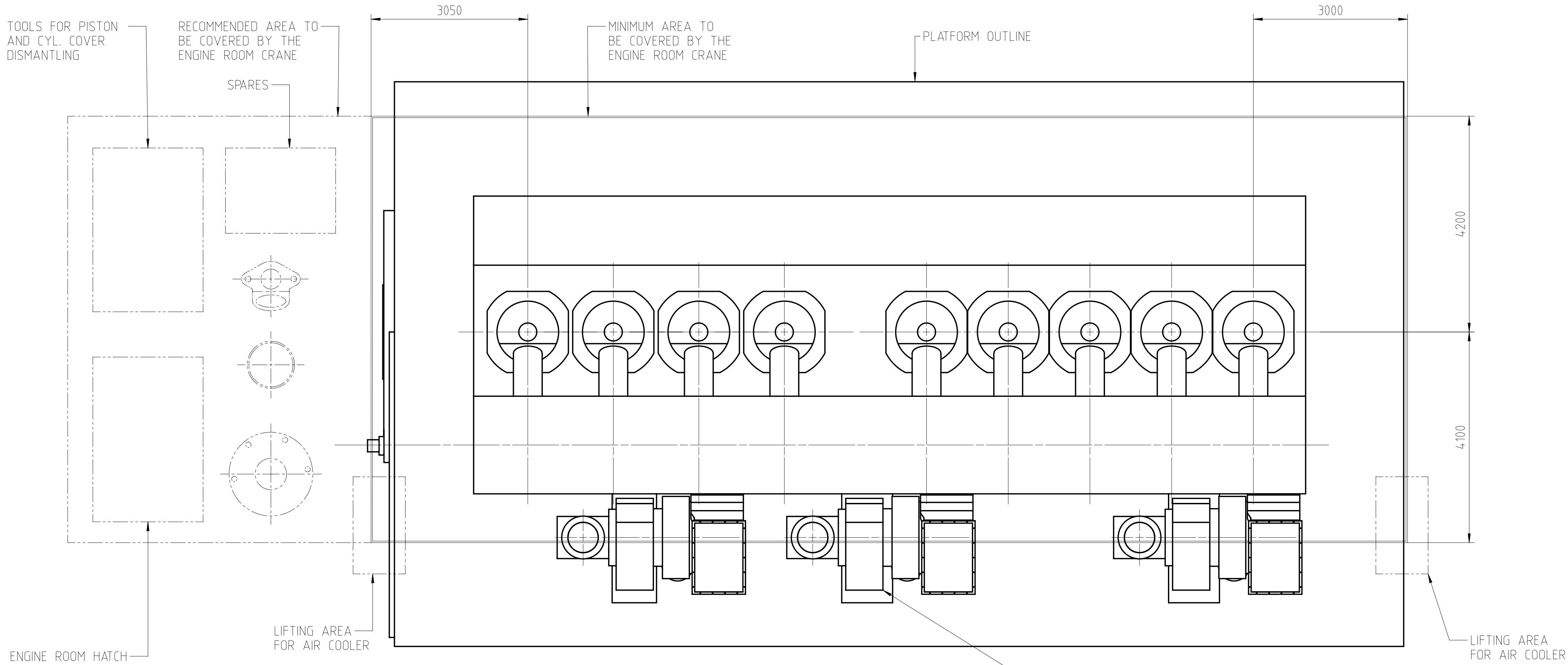
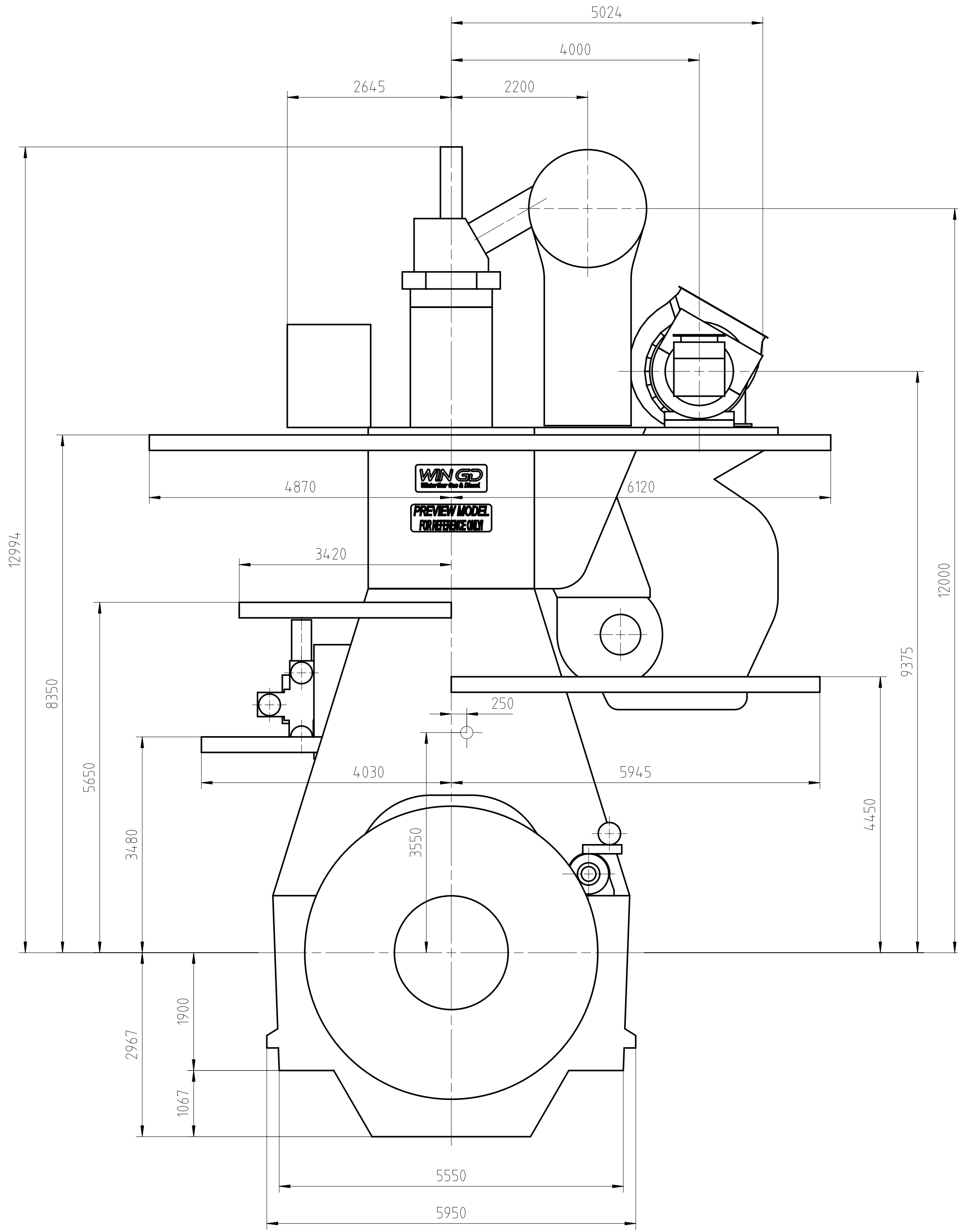
SEQ NO	QTY	Item ID	Item Name	Dimension	Standard-ID	Basic Material	Net Weight							
001	1	PAAD326456	DISMANTLING DIMENSIONS				0.001							
Prod.	9 X92-B													
Change History														
	A	wta101	sth017	13.01.2022	CNAA001358	TC silence casing added	4 3							
	-	wta101	yzh102	02.08.2021	CNAA000439	main drawing introduced	- -							
	Rev.	Creator	Approver	Approval Date	Change ID	Change Synopsis	Approved	Activity Code	E	C				
<div>WIN GD</div> <div>Winterthur Gas & Diesel</div>				ENGINE OUTLINE VIEW										
Bill Of Material				Dimension										
Copyright Winterthur Gas & Diesel Ltd. All rights reserved. By taking possession of the document the recipient recognizes and honours these rights. Neither the whole nor any part of this document may be used in any way for construction, fabrication, marketing or any other purpose nor copied in any way nor made accessible to third parties without the previous written consent of Winterthur Gas & Diesel Ltd.				Units		[m] [kg]	Basic Material		Net Weight		0.001			
				Main Design		Yes		Design Group		0812	Q-Code	XXXXX	Standard	WDS
				Qty per		Engine		A4	Item ID		PTAA008473		BOM Page/s	01/01

Download
"DXF file"

Abgasseite
EXHAUST SIDE



Antriebsseite
DRIVING END



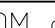
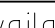
FOR OVERHAUL OF TC
SEE MANUAL OF TC BUILDER

TURBOCHARGER 3xA175L

WEIGHT WITHOUT WATER AND OIL=1630t

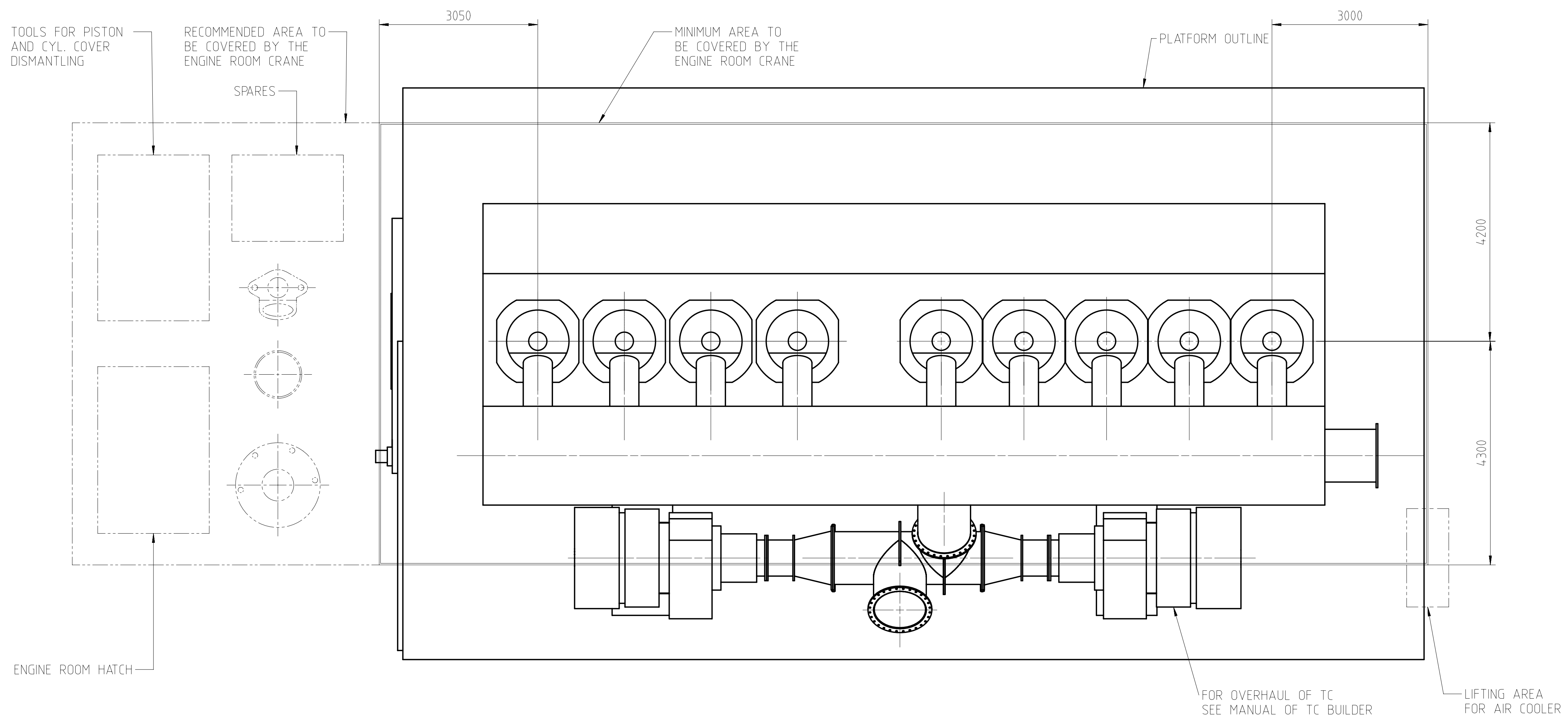
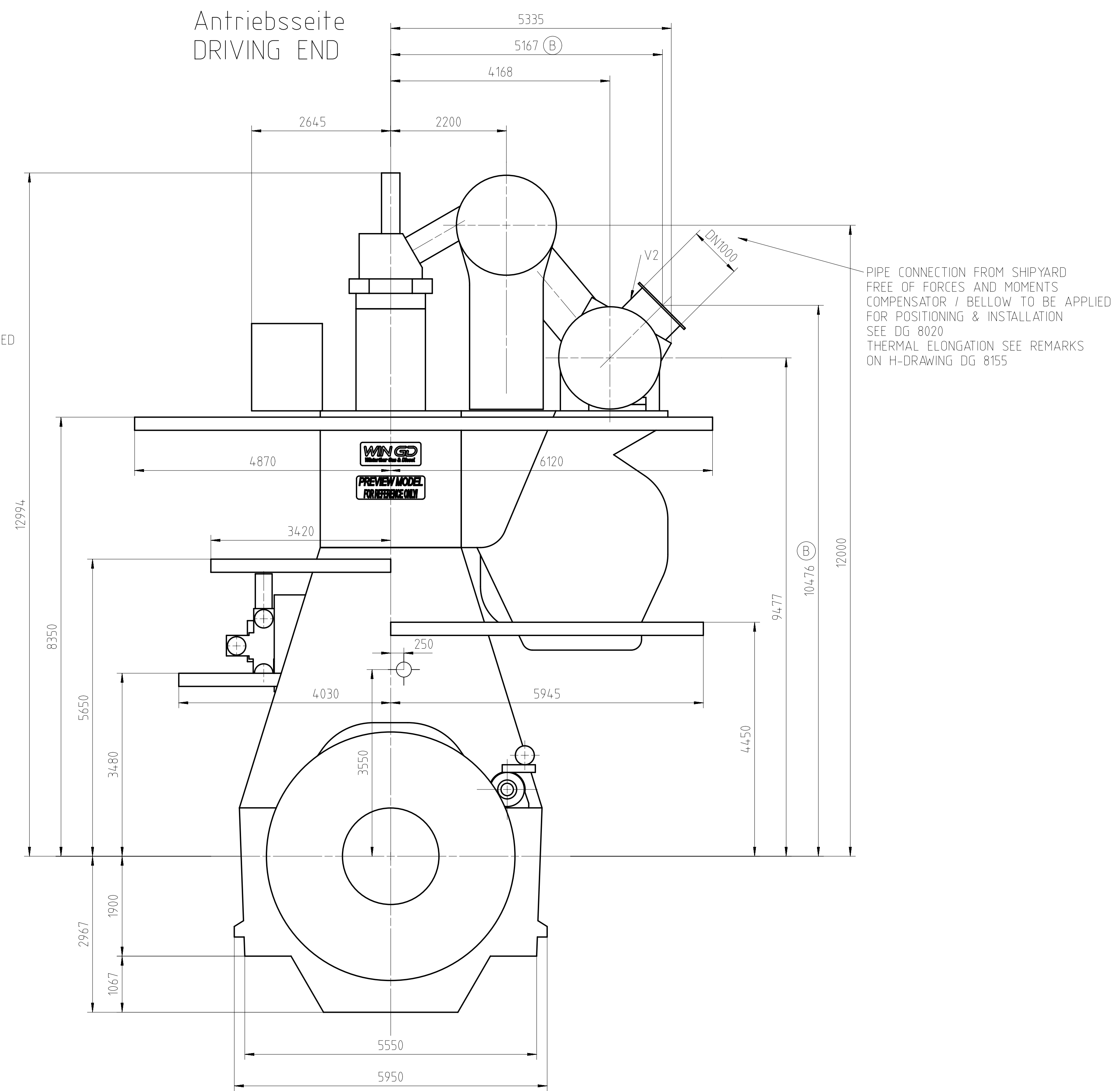
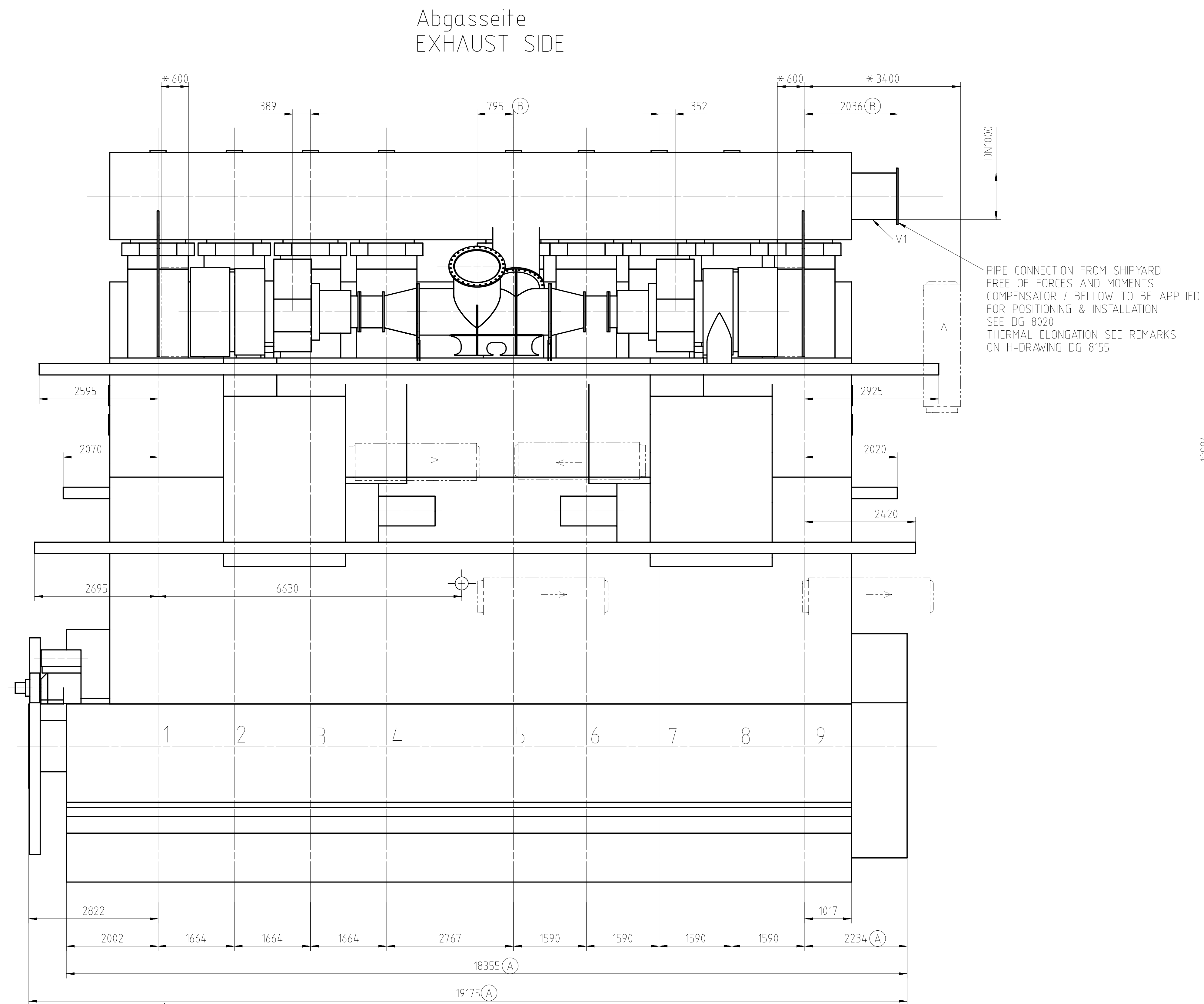
* = SPACE FOR REMOVAL
○ APPROX. CENTRE OF GRAVITY

DIMENSIONS FOR REFERENCE ONLY!
THIS OUTLINE DRAWING CAN NOT
BE USED FOR FINAL DESIGN !
PLEASE TAKE THE CORRESPONDING
DESIGN GROUP!

Prod.		9X82-B									
Change history	A	wfa001	stn017	13.01.2022	CH04001358	TC silence casing added				4	
	-	wfa001	yzh002	02.08.2021	CNA000439	main drawing introduced				-	
	Rev.	Creator	Approver	Approval Date	Change ID	Change Synopsis		Approved		Activity Code	E
WIN GD		Winterthur Gas & Diesel		ENGINE OUTLINE VIEW							
separate BOM available		Dimension									
Scale 1:50		 		Units [mm] [kg]		Basic Material		Net Weight		0.001	
SURFACE PROTECTION SEE GROUP 0364		Copyright Winterthur Gas & Diesel Ltd. All rights reserved.		Main Design		Yes		Design Group		0812 Q-Code XXXXX Standard W	
TOLERANCING PRINCIPLE ISO8015		GENERAL TOLERANCES ACCORDING TO ISO2768-mS		Qty per		Engine		A0		Item ID	
										PTAA008473	
										Drawing Pages	
										1/1	

SEQ NO	QTY	Item ID	Item Name	Dimension	Standard-ID	Basic Material	Net Weight
001	1	PAAD326456	DISMANTLING DIMENSIONS				0.001
Prod.	9 X92-B						
Change History							
	B	wta101	sth017	15.11.2021	CNAA000959	HPSCR Upated	3 2
	A	wta101	sth017	15.09.2021	CNAA000695	Free End Casing updated	3 2
	-	wta101	sth017	20.04.2021		-	- -
	Rev.	Creator	Approver	Approval Date	Change ID	Change Synopsis	Approved Activity Code E C
<div>WIN GD</div> <div>Winterthur Gas & Diesel</div>				ENGINE OUTLINE VIEW HP-SCR			
Bill Of Material				Dimension			
Copyright Winterthur Gas & Diesel Ltd. All rights reserved. By taking possession of the document the recipient recognizes and honours these rights. Neither the whole nor any part of this document may be used in any way for construction, fabrication, marketing or any other purpose nor copied in any way nor made accessible to third parties without the previous written consent of Winterthur Gas & Diesel Ltd.				Units	[m] [kg]	Basic Material	Net Weight 0.001
				Main Design	Yes	Design Group 0812 Q-Code XXXXX	Standard WDS
				Qty per	Engine	A4 Item ID PAAD379675	BOM Page/s 01/01


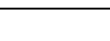
Download
"DXF file"



TURBOCHARGER 2xA280-L

WEIGHT WITHOUT WATER AND OIL=1660t
* = SPACE FOR REMOVAL



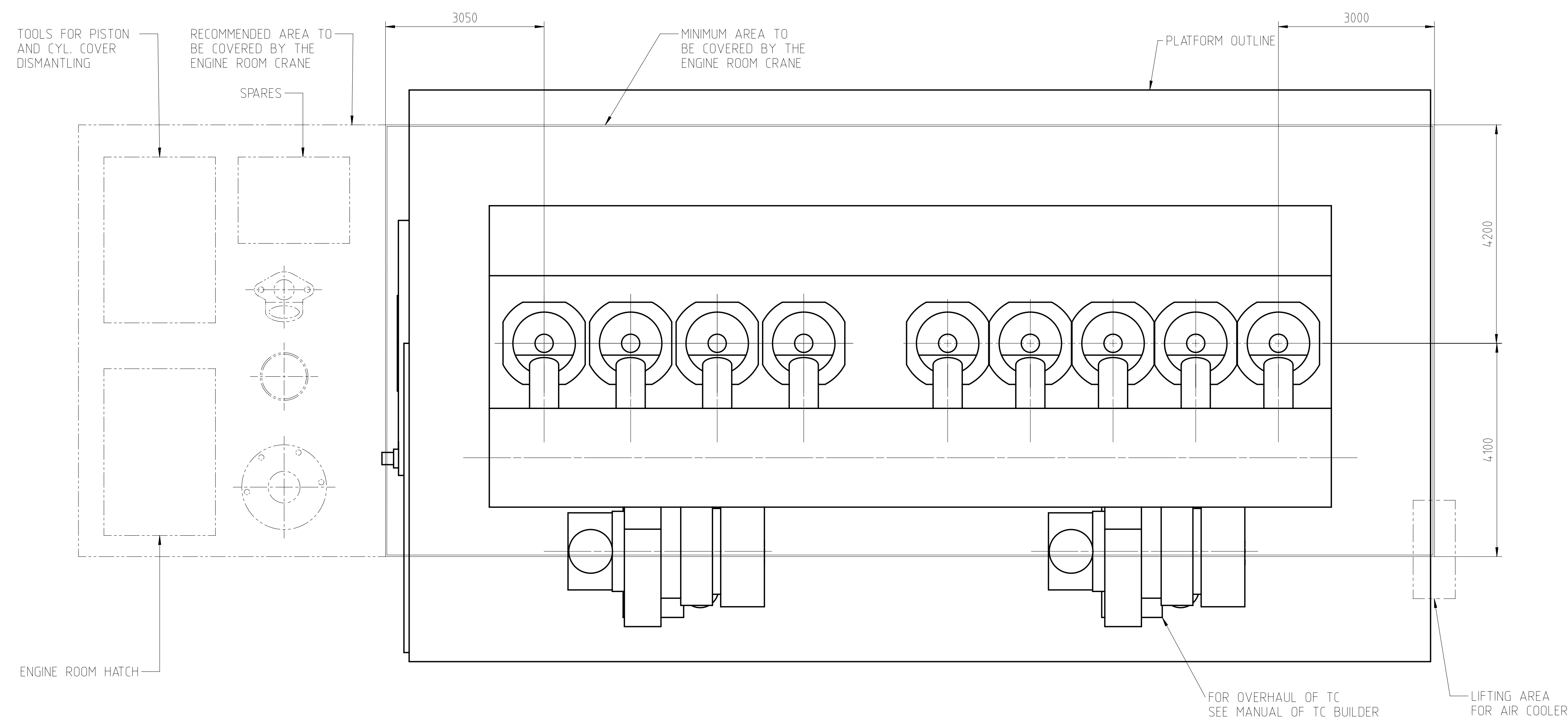
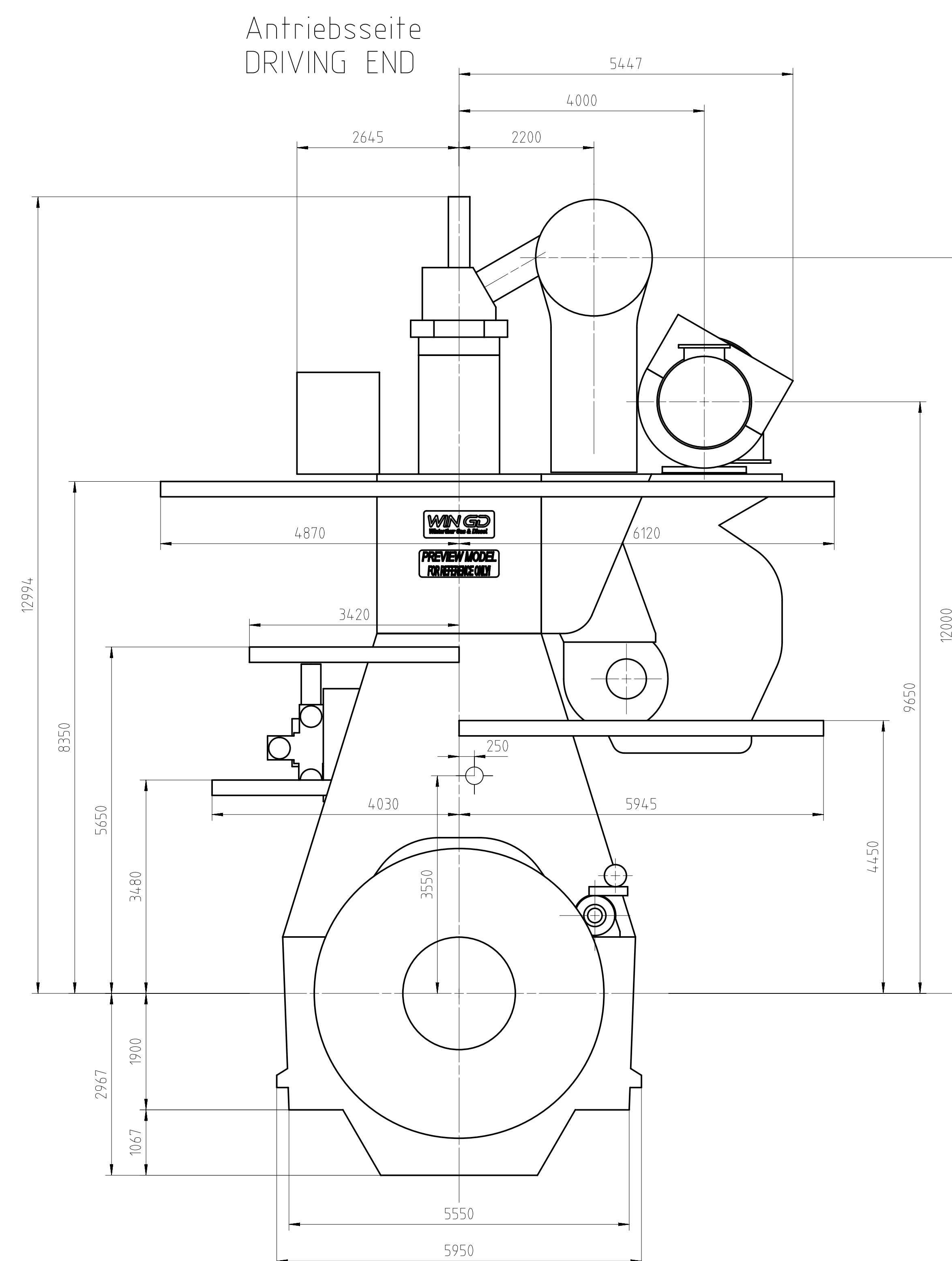
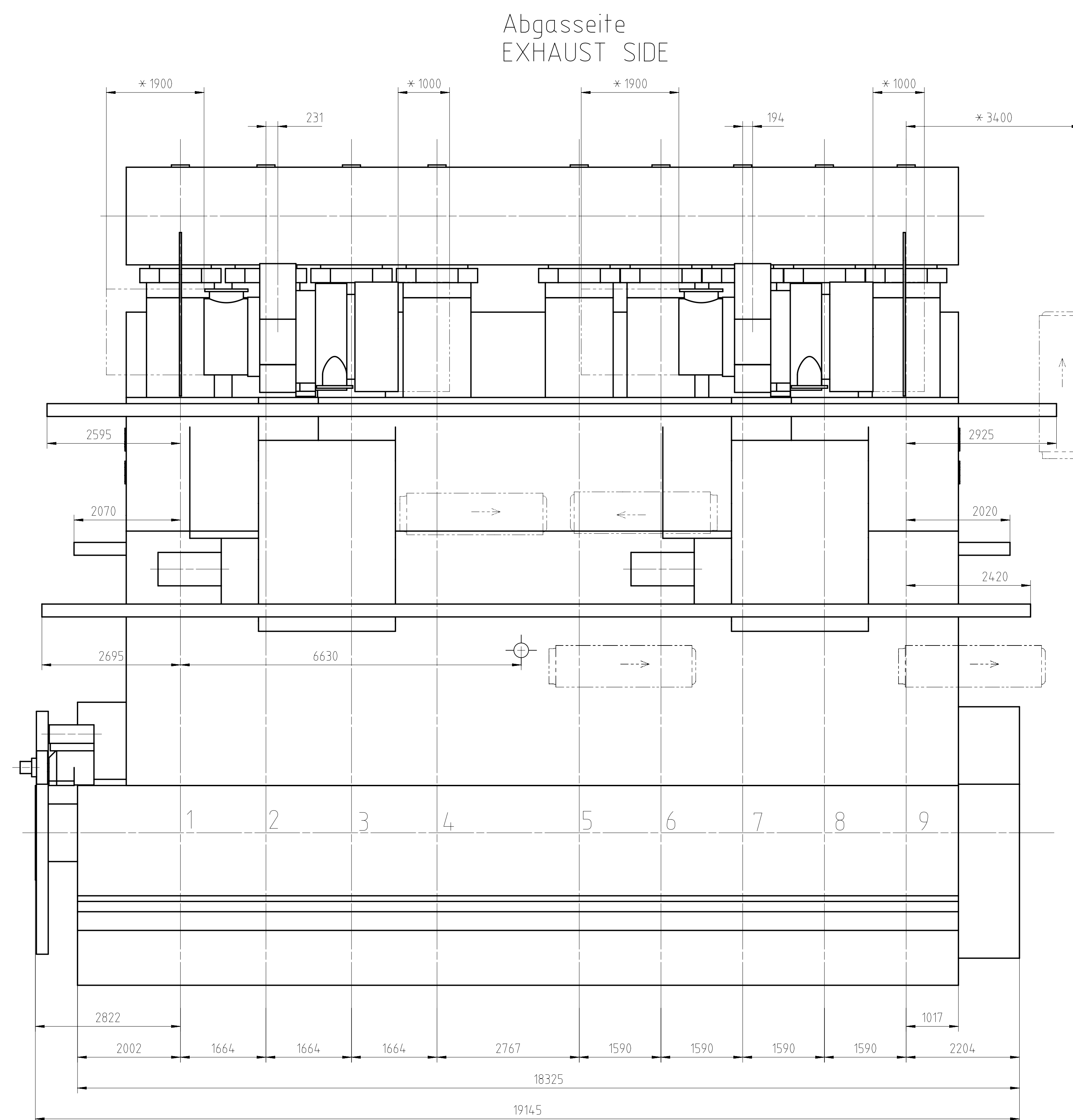
Part		WXR-B											
Change History	B	w/a	stb017	15.11.2021	CNA0000959	HP-SCR Updated			4	3			
	A	w/a	stb017	15.09.2021	CNA0000695	Free End Casing updated			3	2			
	-	w/a	stb017	20.04.2021		-			-	-			
	Rev	Created	Approved	Approval Date	Change ID	Change Summary			Approved	Activity Code			
									E	C			
					ENGINE OUTLINE HP-SCR								
Dimension													
Scale 1:50  NX													
Copyright Winther Gas & Diesel Ltd. All rights reserved. The design contained in this document is the property of Winther Gas & Diesel Ltd. No part of this drawing may be used or copied without the written permission of Winther Gas & Diesel Ltd. Before making alterations or using other products we agreed to, please contact Winther Gas & Diesel Ltd.					Main Design		Basic Material		Net Weight		0.001		
					Yes		Design Qty		0812		Q-Code XXXXX	Standard	WDS
					Qty per Engine		A/C Item ID		PAAD379675		Drawing Page/s		1/1

DIMENSIONS FOR REFERENCE ONLY!
THIS OUTLINE DRAWING CAN NOT
BE USED FOR FINAL DESIGN !
PLEASE TAKE THE CORRESPONDING
DESIGN GROUP!

SURFACE PROTECTION SEE GROUP 0344
TOLERANCING PRINCIPLE ISO8015
GENERAL TOLERANCES ACCORDING TO IS

SEQ NO	QTY	ItemID	ItemName	Dimension	Standard-ID	BasicMaterial	Net Weight				
001	1	PAAD326456	DISMANTLING DIMENSIONS				0.001				
<div></div>											
Prod											
Change History											
	-	wta101	sth017	11.06.2021	CNAA000116	main drawing introduced		-	-		
		Created	ApprBy	ApprDate	ChangeID	ChangeSynopsis	Approved	ActivityCode	E	C	
<div><div>WIN GD</div><div>Winterthur Gas & Diesel</div></div>				ENGINE OUTLINE VIEW							
Bill Of Material				Dimension							
Copyright Winterthur Gas & Diesel Ltd. All rights reserved. By taking possession of the document the recipient recognizes and honours these rights. Neither the whole nor any part of this document may be used in any way for construction, fabrication, marketing or any other purpose nor copied in any way nor made accessible to third parties without the previous written consent of Winterthur Gas & Diesel Ltd.				Units [m] [kg]		BasicMaterial		NetWeight 0.001			
				MainDesign Y		DesignGroup 0812		Q-Code XXXXX		Standard WDS	
				Qty per Engine		A4		Item ID PTAA000502		BOM Page/s 01/01	


Download
"DXF file"



TURBOCHARGER 2xMET83MB

WEIGHT WITHOUT WATER AND OIL=1630t

* = SPACE FOR REMOVAL

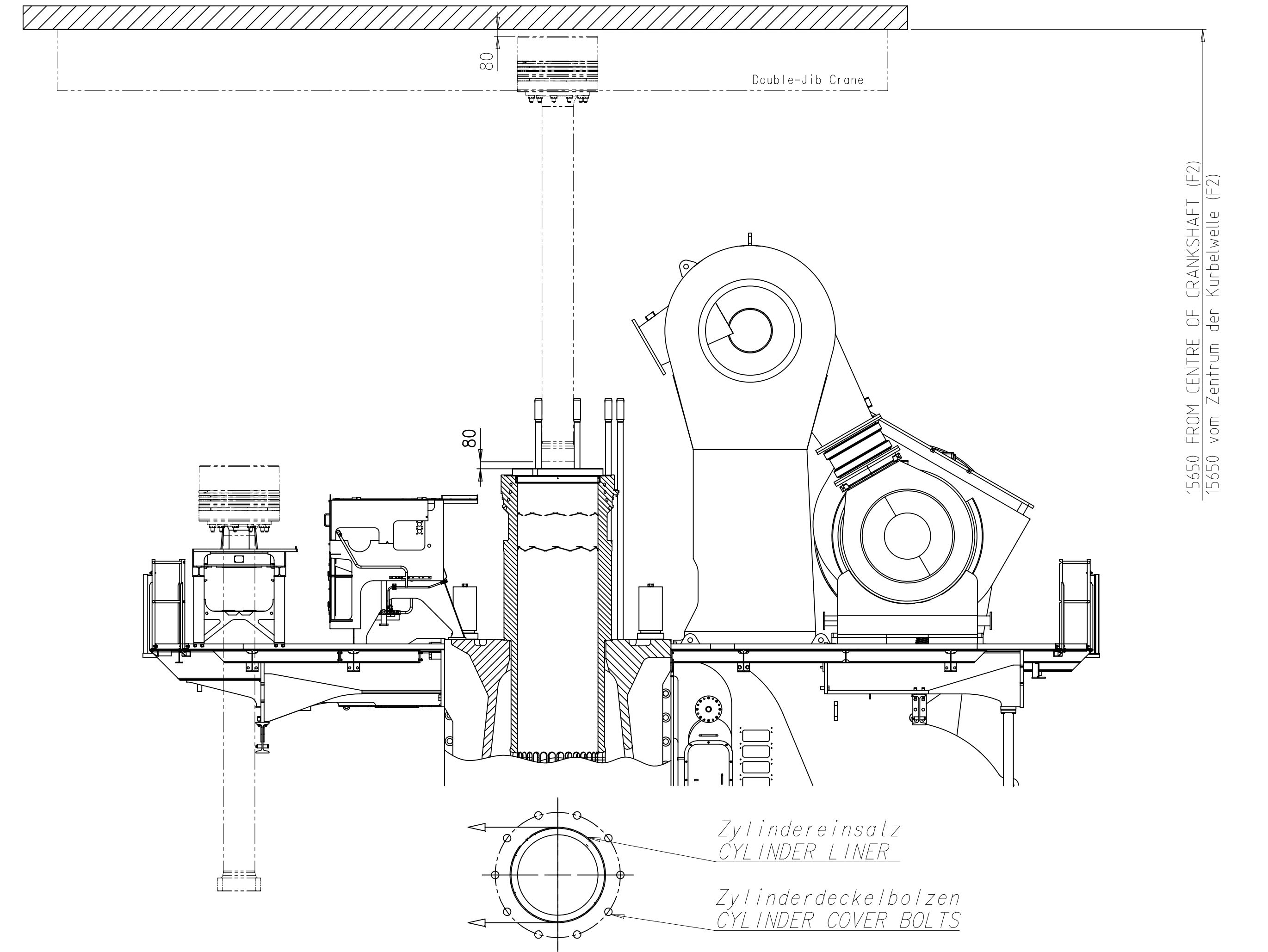
 APPROX. CENTRE OF GRAVITY[illegible]

DIMENSIONS FOR REFERENCE ONLY!
THIS OUTLINE DRAWING CAN NOT
BE USED FOR FINAL DESIGN !
PLEASE TAKE THE CORRESPONDING
DESIGN GROUP!

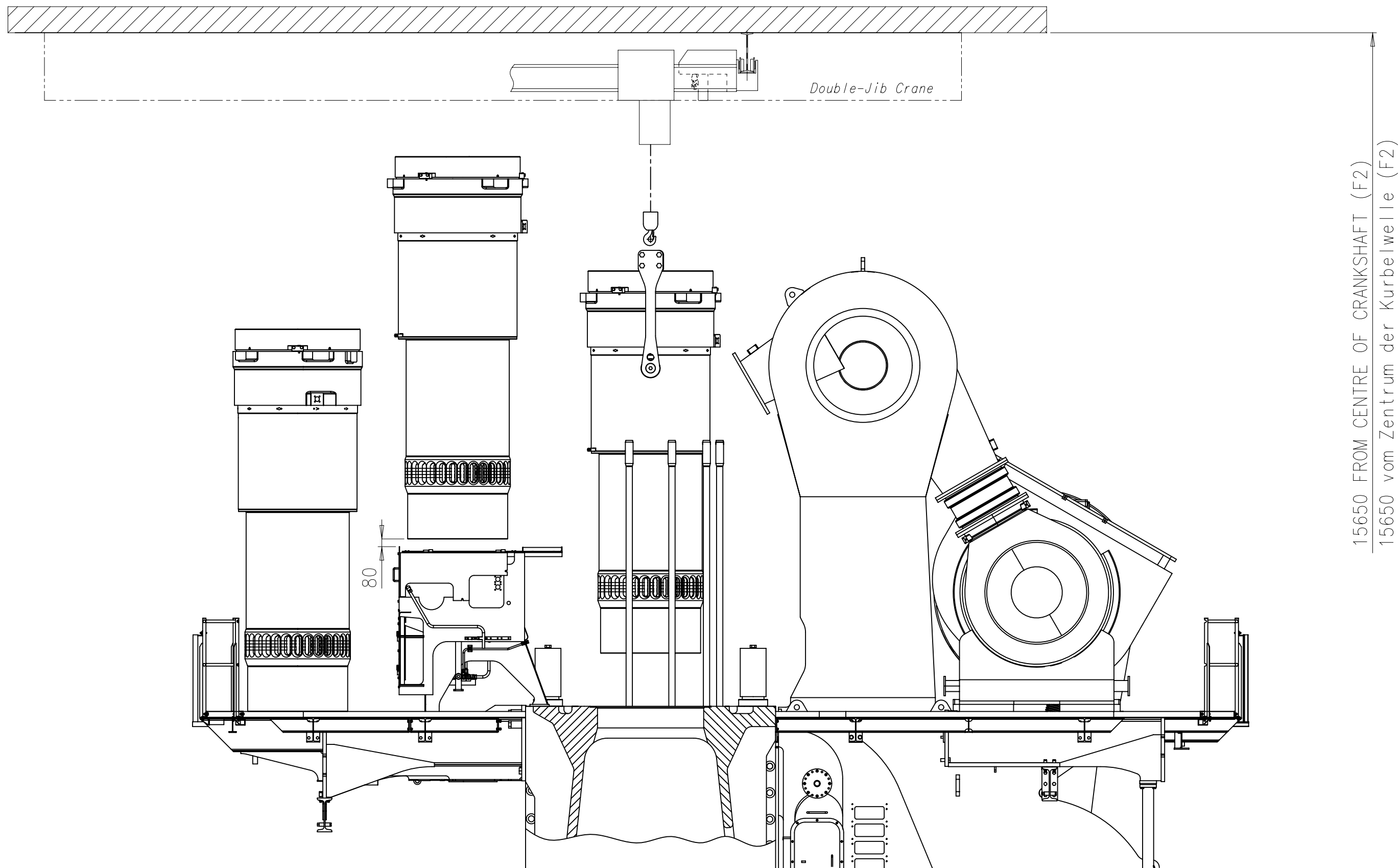
SURFACE PROTECTION SEE GROUP 0344
TOLERANCING PRINCIPLE ISO8015
GENERAL TOLERANCES ACCORDING TO ISO2768

Scale	1:50	1:10	1:20	1:40	1:80	1:160	1:320	1:640	1:1280	1:2560	1:5120	1:10240	1:20480	1:40960	1:81920	1:163840	1:327680	1:655360	1:1310720	1:2621440	1:5242880	1:10485760	1:20971520	1:41943040	1:83886080	1:167772160	1:335544320	1:671088640	1:1342177280	1:2684354560	1:5368709120	1:10737418240	1:21474836480	1:42949672960	1:85899345920	1:171798691840	1:343597383680	1:687194767360	1:1374389534720	1:2748779069440	1:5497558138880	1:10995116277760	1:21990232555520	1:43980465111040	1:87960930222080	1:175921860444160	1:351843720888320	1:703687441776640	1:1407374883553280	1:2814749767106560	1:5629499534213120	1:11258999068426240	1:22517998136852480	1:45035996273704960	1:90071992547409920	1:180143985094819840	1:360287970189639680	1:720575940379279360	1:1441151880758558720	1:2882303761517117440	1:5764607523034234880	1:11529215046068469760	1:23058430092136939520	1:46116860184273879040	1:92233720368547758080	1:184467440737095516160	1:368934881474191032320	1:737869762948382064640	1:1475739525896764129280	1:2951479051793528258560	1:5902958103587056517120	1:11805916207174113034240	1:23611832414348226068480	1:47223664828696452136960	1:94447329657392904273920	1:188894659314785808547840	1:377789318629571617095680	1:755578637259143234191360	1:1511157274518286468382720	1:3022314549036572936765440	1:6044629098073145873530880	1:12089258196146291747061760	1:24178516392292583494123520	1:48357032784585166988247040	1:96714065569170333976494080	1:193428131138340667952988160	1:386856262276681335905976320	1:773712524553362671811952640	1:1547425049106725343623905280	1:3094850098213450687247810560	1:6189700196426901374495621120	1:12379400392853802748991242240	1:24758800785707605497982484480	1:49517601571415210995964968960	1:99035203142830421991929937920	1:19807040628566084398385987840	1:39614081257132168796771975680	1:79228162514264337593543951360	1:158456325028528675187087902720	1:316912650057057350374175805440	1:633825300114114700748351610880	1:1267650600228229401496703221760	1:2535301200456458802993406443520	1:5070602400912917605986812887040	1:10141204801825835211973625774080	1:20282409603651670423947251548160	1:40564819207303340847894503096320	1:81129638414606681695789006192640	1:162259276829213363391578012385280	1:324518553658426726783156024770560	1:649037107316853453566312049541120	1:1298074214633706907132624099082240	1:2596148429267413814265248198164480	1:5192296858534827628530496396328960	1:10384593717069655257060992792657920	1:20769187434139310514121985585315840	1:41538374868278621028243971170631680	1:83076749736557242056487942341263360	1:166153499473114484112975884682527040	1:332306998946228968225951769365054080	1:664613997892457936451903538730108160	1:1329227995784915872903807077460216320	1:2658455991569831745807614154920432640	1:5316911983139663491615228309840865280	1:10633823966279326983230456619681730560	1:21267647932558653966460913239363461120	1:42535295865117307932921826478726922240	1:85070591730234615865843652957453844480	1:170141183460469231731687305914907688960	1:340282366920938463463374611829815377920	1:680564733841876926926749223659630755840	1:1361129467683753853853498447319261511680	1:2722258935367507707706996894638523023360	1:5444517870735015415413993789277046046720	1:10889035741470030830827987578554092093440	1:21778071482940061661655975157108184186880	1:43556142965880123323311950314216368373760	1:87112285931760246646623900628432736747520	1:17
-------	------	------	------	------	------	-------	-------	-------	--------	--------	--------	---------	---------	---------	---------	----------	----------	----------	-----------	-----------	-----------	------------	------------	------------	------------	-------------	-------------	-------------	--------------	--------------	--------------	---------------	---------------	---------------	---------------	----------------	----------------	----------------	-----------------	-----------------	-----------------	------------------	------------------	------------------	------------------	-------------------	-------------------	-------------------	--------------------	--------------------	--------------------	---------------------	---------------------	---------------------	---------------------	----------------------	----------------------	----------------------	-----------------------	-----------------------	-----------------------	------------------------	------------------------	------------------------	------------------------	-------------------------	-------------------------	-------------------------	--------------------------	--------------------------	--------------------------	---------------------------	---------------------------	---------------------------	---------------------------	----------------------------	----------------------------	----------------------------	-----------------------------	-----------------------------	-----------------------------	------------------------------	------------------------------	------------------------------	------------------------------	-------------------------------	-------------------------------	-------------------------------	--------------------------------	--------------------------------	--------------------------------	---------------------------------	---------------------------------	---------------------------------	---------------------------------	---------------------------------	---------------------------------	---------------------------------	----------------------------------	----------------------------------	----------------------------------	-----------------------------------	-----------------------------------	-----------------------------------	------------------------------------	------------------------------------	------------------------------------	------------------------------------	-------------------------------------	-------------------------------------	-------------------------------------	--------------------------------------	--------------------------------------	--------------------------------------	---------------------------------------	---------------------------------------	---------------------------------------	---------------------------------------	--	--	--	---	---	---	--	--	--	--	---	---	---	--	--	--	---	---	---	---	------

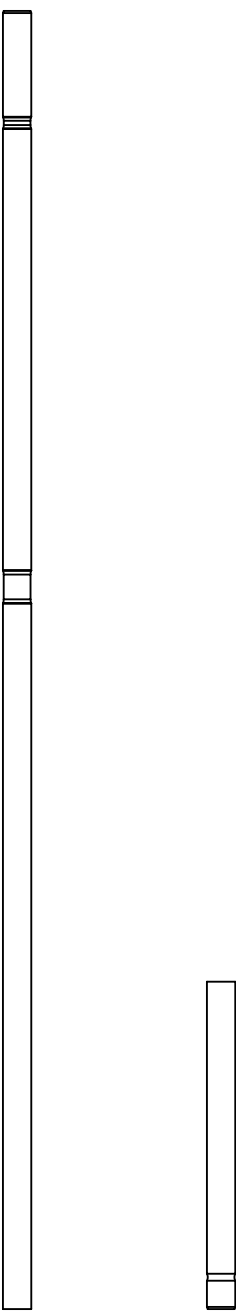
Kolbenausbau
PISTON DISMANTLING



Ausbau Zylindereinsatz
DISMANTLING OF CYLINDER LINER

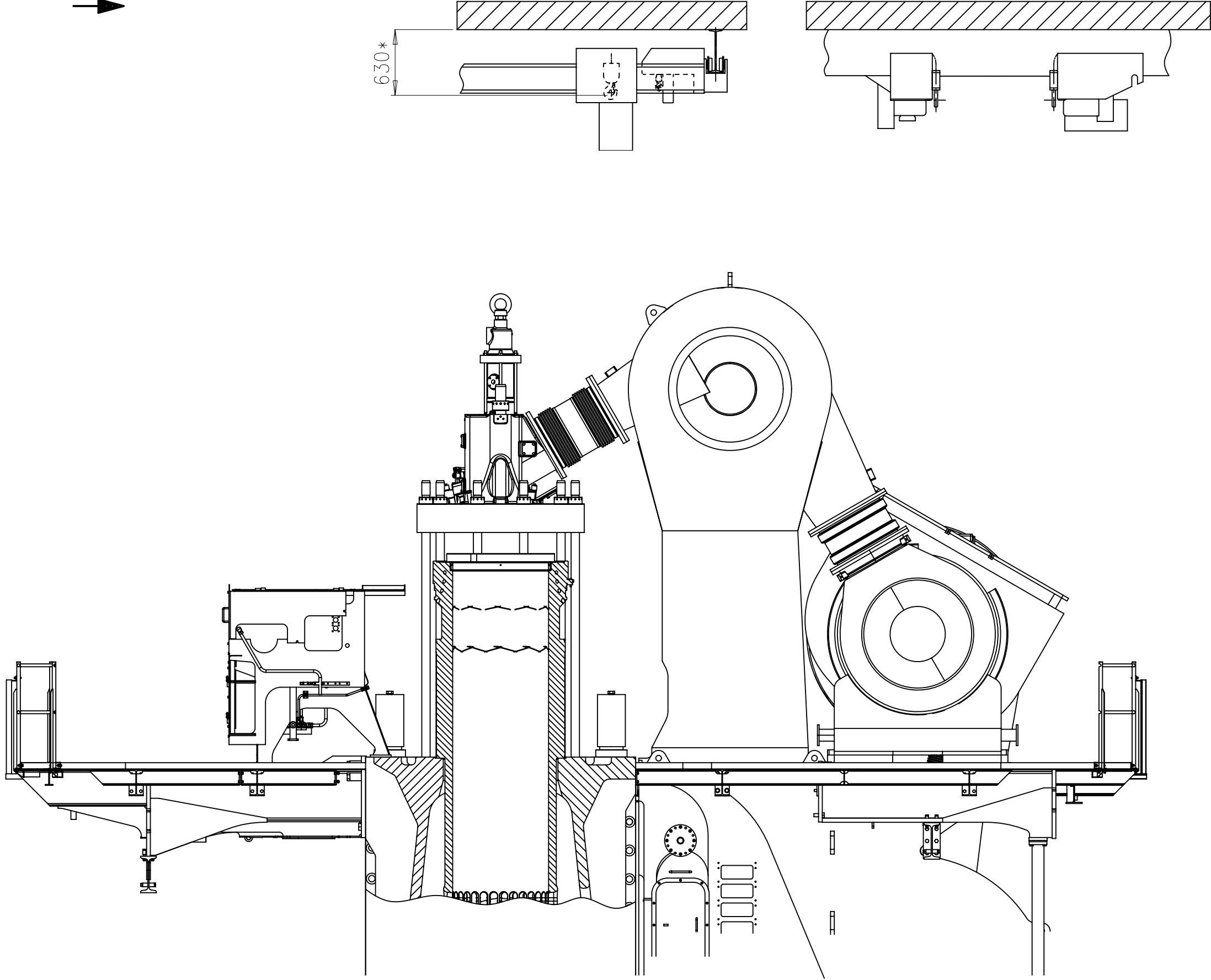


Zuganker, zweiteilig
TWO-PART TIE ROD



DOUBLE-JIB CRANE

Krankapazität min. 2x7000 kg
CRANE CAPACITY MIN. 2x7000 kg



Voraussetzungen fuer diese Ausbauart!

- alle Zylinderdeckel-Dehnbolzen auf der Brennstoffpumpenseite müssen zweiteilig ausgeführt werden
- zweiteilige Zuganker im Reparaturfall
- Spezialkran (DOUBLE-JIB)
- spezielle Hebwerkzeuge für den Kolben
- spezielle Hebwerkzeuge für den Zylindereinsatz

REQUIREMENTS FOR THIS DISMANTLING METHOD!

- TWO-PIECE ELASTIC STUDS FOR CYLINDER COVER ON FUEL PUMP SIDE
- TWO-PART TIE ROD IN CASE OF REPAIR
- SPECIAL CRANE (DOUBLE-JIB)
- SPECIAL LIFTING TOOLS FOR PISTON
- SPECIAL LIFTING TOOLS FOR CYLINDER LINER

Standardausbau mit
Double-Jib Kran

Minimale Höhe für den vertikalen
Ausbau mit dem Double-Jib Kran

*Die Distanz von der obersten
Hakenposition bis zur
Decke variiert je nach der
ausgewählten Kranausführung

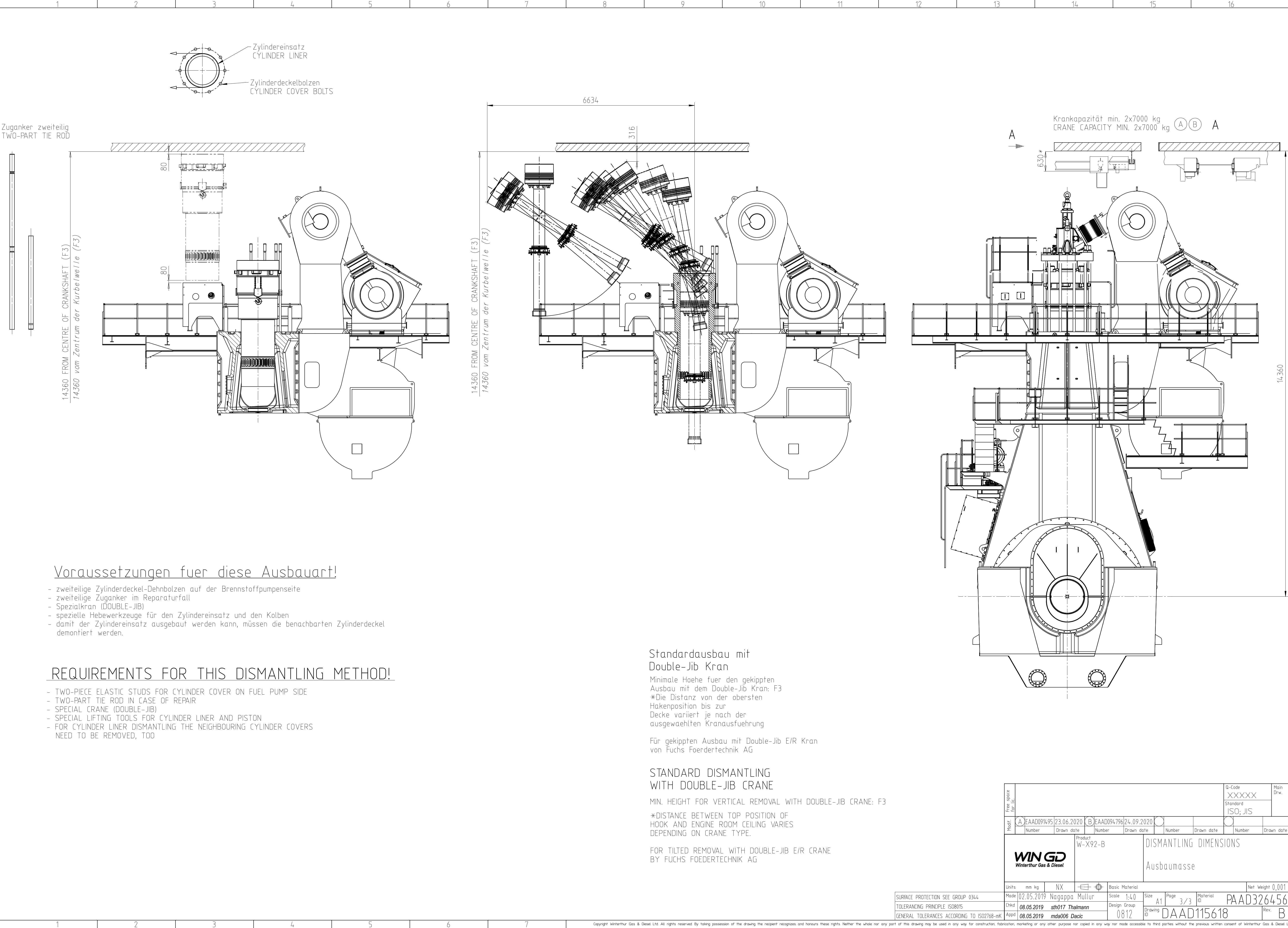
STANDARD DISMANTLING
WITH DOUBLE-JIB CRANE

MIN. HEIGHT FOR VERTICAL REMOVAL WITH DOUBLE-JIB CRANE: F2

*DISTANCE BETWEEN TOP POSITION OF HOOK
AND ENGINE ROOM CEILING VARIES DEPENDING
ON CRANE TYPE.

FOR TILTED REMOVAL WITH DOUBLE JIB E/R CRANE
BY FUCKS FOERDERTECHNIK AG

SURFACE PROTECTION SEE GROUP 0344	Made	02.05.2019	Nagappa Mullur	Scale	1:40	Size	A1	Page	2/3	Material	PAAD326456
TOLERANCING PRINCIPLE ISO8015	Chkd	08.05.2019	sth017 Thalmann	Design Group		Drawing ID	DAAD115618	Rev.	B		
GENERAL TOLERANCES ACCORDING TO ISO2768-mK	Appd	08.05.2019	mda006 Dacic	0812							



Voraussetzungen fuer diese Ausbauart!

- zweiteilige Zylinderdeckel-Dehnbolzen auf der Brennstoffpumpenseite
- zweiteilige Zuganker im Reparaturfall
- Spezialkran (DOUBLE-JIB)
- spezielle Hebwerkzeuge für den Zylindereinsatz und den Kolben
- damit der Zylindereinsatz ausgebaut werden kann, müssen die benachbarten Zylinderdeckel demontiert werden.

REQUIREMENTS FOR THIS DISMANTLING METHOD!

- TWO-PIECE ELASTIC STUDS FOR CYLINDER COVER ON FUEL PUMP SIDE
- TWO-PART TIE ROD IN CASE OF REPAIR
- SPECIAL CRANE (DOUBLE-JIB)
- SPECIAL LIFTING TOOLS FOR CYLINDER LINER AND PISTON
- FOR CYLINDER LINER DISMANTLING THE NEIGHBOURING CYLINDER COVERS NEED TO BE REMOVED, TOO

Standardausbau mit Double-Jib Kran

Minimale Hoehe fuer den gekippten Ausbau mit dem Double-Jib Kran: F3
*Die Distanz von der obersten Hakenposition bis zur Decke variiert je nach der ausgewaehlten Kranausfuehrung

Für gekippten Ausbau mit Double-Jib E/R Kran von Fuchs Foerdertechnik AG

STANDARD DISMANTLING WITH DOUBLE-JIB CRANE

MIN. HEIGHT FOR VERTICAL REMOVAL WITH DOUBLE-JIB CRANE: F3

*DISTANCE BETWEEN TOP POSITION OF HOOK AND ENGINE ROOM CEILING VARIES DEPENDING ON CRANE TYPE.

FOR TILTED REMOVAL WITH DOUBLE-JIB E/R CRANE BY FUCHS FOERDERTECHNIK AG

Free space for file		0-Code XXXXX Standard ISO; JIS				Main Drw.	
Modif.	A	EAAD091495	23.06.2020	B	EAAD094796	24.09.2020	
Number				Number			
Drawn date				Drawn date			
WINGD Winterthur Gas & Diesel		Product W-X92-B		DISMANTLING DIMENSIONS			
				Ausbaumasse			
Units	mm kg	NX		Basic Material		Net Weight 0,001	
Made	02.05.2019	Nagappa Mullur		Scale 1:40		Size A1	
Chkd	08.05.2019	sth017 Thalmann		Design Group		Page 3/3	
Appd	08.05.2019	mda006 Dacic		Drawing ID		DAAD115618	
SURFACE PROTECTION SEE GROUP 0344		TOLERANCING PRINCIPLE ISO8015		GENERAL TOLERANCES ACCORDING TO ISO2768-mK		Material ID PAAD326456	
						Rev. B	

WinGD-9X92-B _Engine Outline Views

TRACK CHANGES

DATE	SUBJECT	DESCRIPTION
2021-05-17	DRAWING SET	First web upload
2021-06-23	PTAA000502	New engine outline view drawing for Turbocharger type 2xMET 83MB has been added.
2021-09-15	PTAA008473	New engine outline view drawing for Turbocharger type 3xA175-L has been added.
2021-12-02	PAAD379675	Revised engine outline view drawing for Turbocharger type 2xA280-L has been updated.
2022-03-16	PTAA008473	Revised engine outline view drawing for Turbocharger type 3xA175-L has been added.

DISCLAIMER

© Copyright by Winterthur Gas & Diesel Ltd.

All rights reserved. No part of this document may be reproduced or copied in any form or by any means (electronic, mechanical, graphic, photocopying, recording, taping or other information retrieval systems) without the prior written permission of the copyright owner.

THIS PUBLICATION IS DESIGNED TO PROVIDE AN ACCURATE AND AUTHORITATIVE INFORMATION WITH REGARD TO THE SUBJECT-MATTER COVERED AS WAS AVAILABLE AT THE TIME OF PRINTING. HOWEVER, THE PUBLICATION DEALS WITH COMPLICATED TECHNICAL MATTERS SUITED ONLY FOR SPECIALISTS IN THE AREA, AND THE DESIGN OF THE SUBJECT-PRODUCTS IS SUBJECT TO REGULAR IMPROVEMENTS, MODIFICATIONS AND CHANGES. CONSEQUENTLY, THE PUBLISHER AND COPYRIGHT OWNER OF THIS PUBLICATION CAN NOT ACCEPT ANY RESPONSIBILITY OR LIABILITY FOR ANY EVENTUAL ERRORS OR OMISSIONS IN THIS BOOKLET OR FOR DISCREPANCIES ARISING FROM THE FEATURES OF ANY ACTUAL ITEM IN THE RESPECTIVE PRODUCT BEING DIFFERENT FROM THOSE SHOWN IN THIS PUBLICATION. THE PUBLISHER AND COPYRIGHT OWNER SHALL UNDER NO CIRCUMSTANCES BE HELD LIABLE FOR ANY FINANCIAL CONSEQUENTIAL DAMAGES OR OTHER LOSS, OR ANY OTHER DAMAGE OR INJURY, SUFFERED BY ANY PARTY MAKING USE OF THIS PUBLICATION OR THE INFORMATION CONTAINED HEREIN.