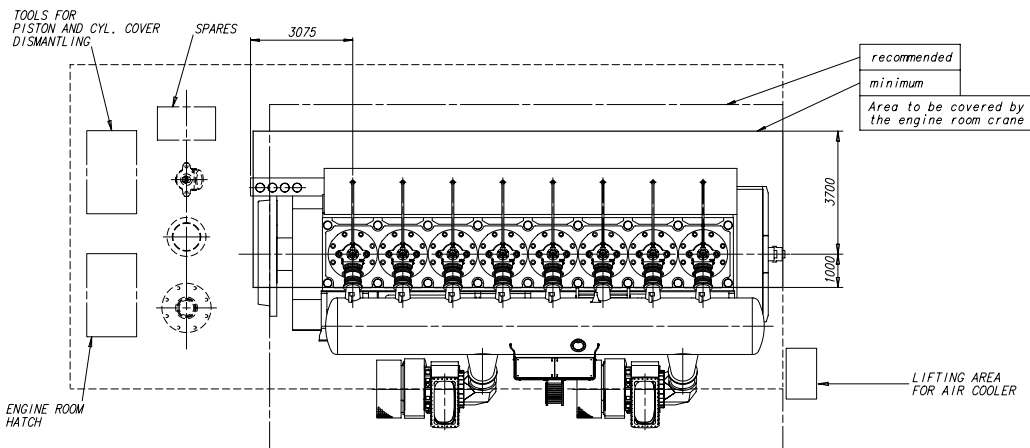
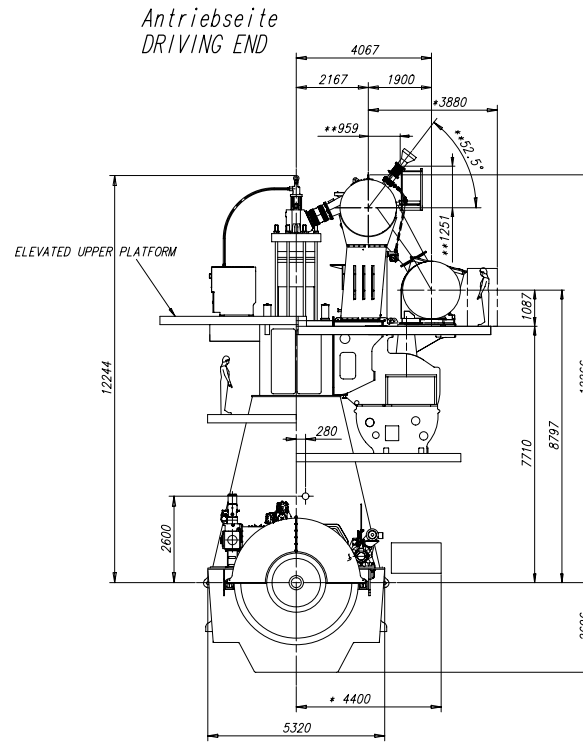
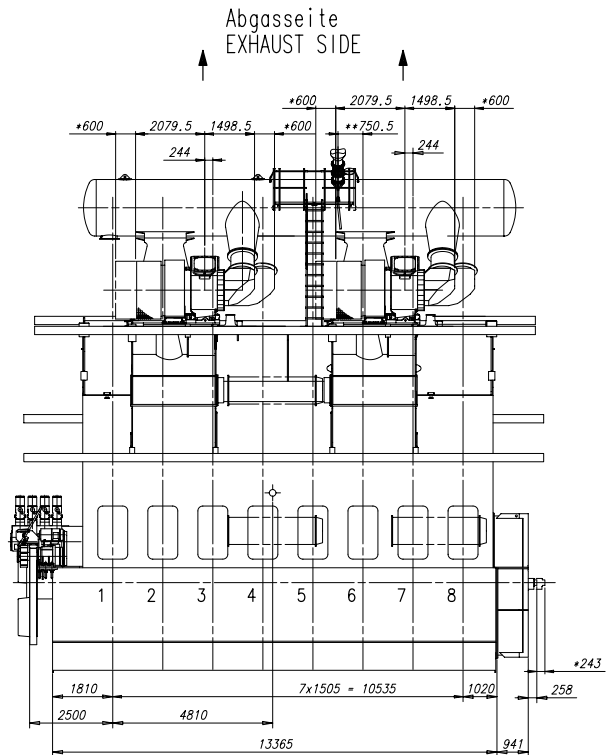


Download
"DXF file"



PLEASE NOTE:

MAIN STAIRS WITH MORE THAN 4 STEPS ONLY
IN LONGITUDINAL DIRECTION OF THE ENGINE.

 = ca. Schwerpunkt
AB. CENTRE OF GRAVITY

Gewicht ohne Wasser und Oel = 1020 t
WEIGHT WITHOUT WATER AND OIL

TURBOCHARGER: 2x A280-L (A)

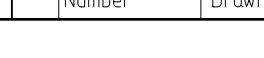

Elevated upper platform FPS

* Platz fuer Demontage
SPACE FOR REMOVAL

** WITH EXHAUST WASTE GATE
FOR LLT (OPTIONAL)
Winkel kann zwischen 40°-70° gewählt werden
je nach Angaben der Werft (gezeichnet für 52.5°)
ANGLE CAN BE CHOSEN FROM 40°-70° ACCORDING
TO SHIPYARD RECOMMENDATION (DRAWN FOR 52.5°)

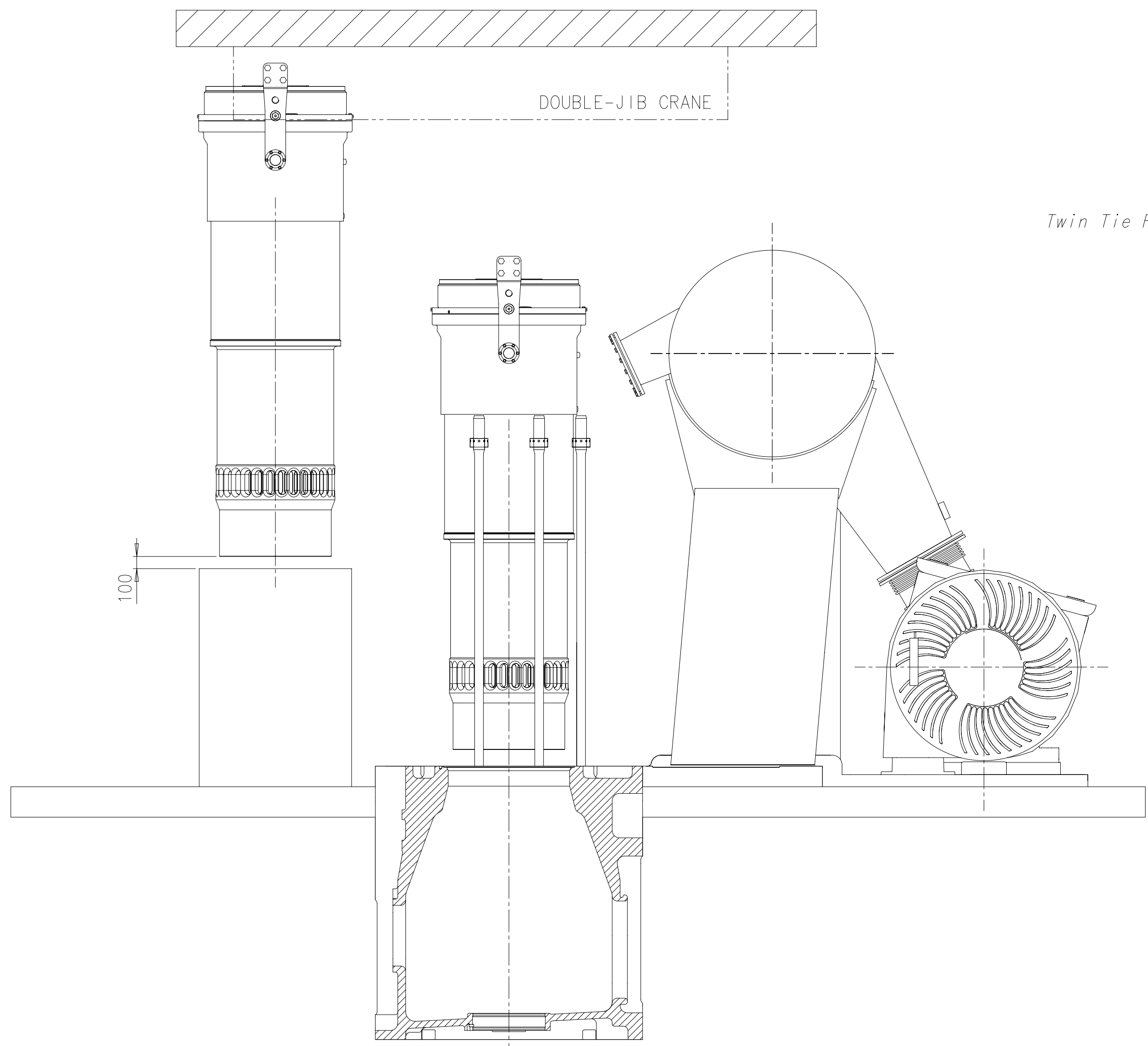
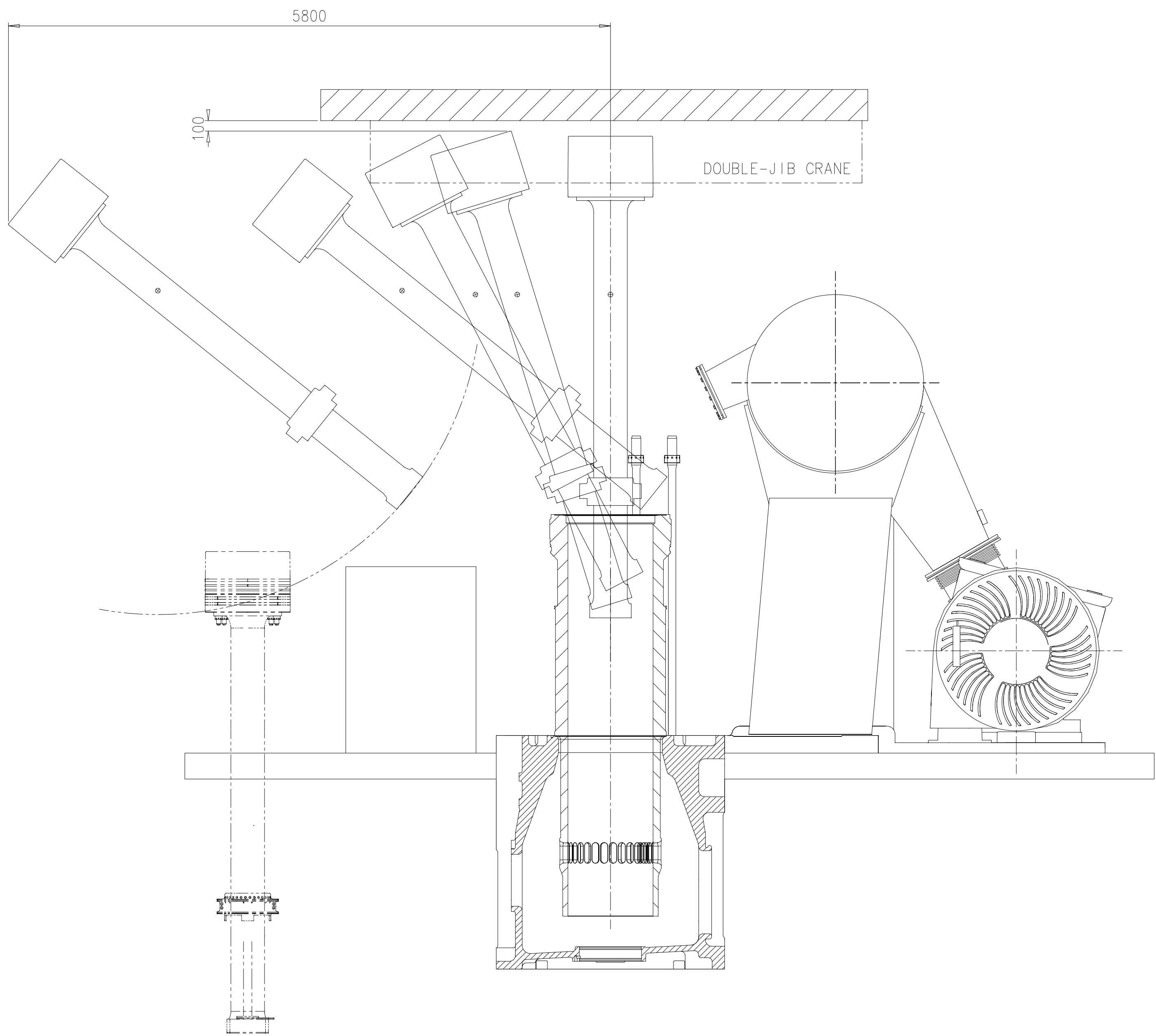
Net Weight		0.001									
1	002	PAAD122391	PLATFORM ARRANGEMENT PLAN			DAAD038061				0.001	
		107.404.311.500	DISMANTLING DIMENSIONS			107.404.311				0.001	
PER ENGINE		Material ID	Material Name		Dimensions/Occ. Dimension	Standard or Drawing	Basic Material		Material ID Standard	Weight ID / NET	
PAAD122392		Free space for list					G-Code		XXXXXX	Min. Draw.	
							Standard		ISO JIS	H	
Material ID	Serial	EA00084540	ISO 4013	EA00085139	26.03.2014						
	Number	Draw date	Number	Draw date	Number	Draw date	Number	Draw date			
			Planned WBX82		ENGINE OUTLINE VIEW Motorsansichten					Net Weight	
Units	mm kg	ID#			Basic Material						
Date	09.04.2013	32x4013	Zuercher		Scale	1:75	Size	A1	Page	1/1	
Chad	11.04.2013	br1004	Hoger		Design Group	0812	Material ID	DAAD038060		Rev.	
App'd	27.03.2014	bbd009	Riss								
ING TO 1502768-01											

[illegible]

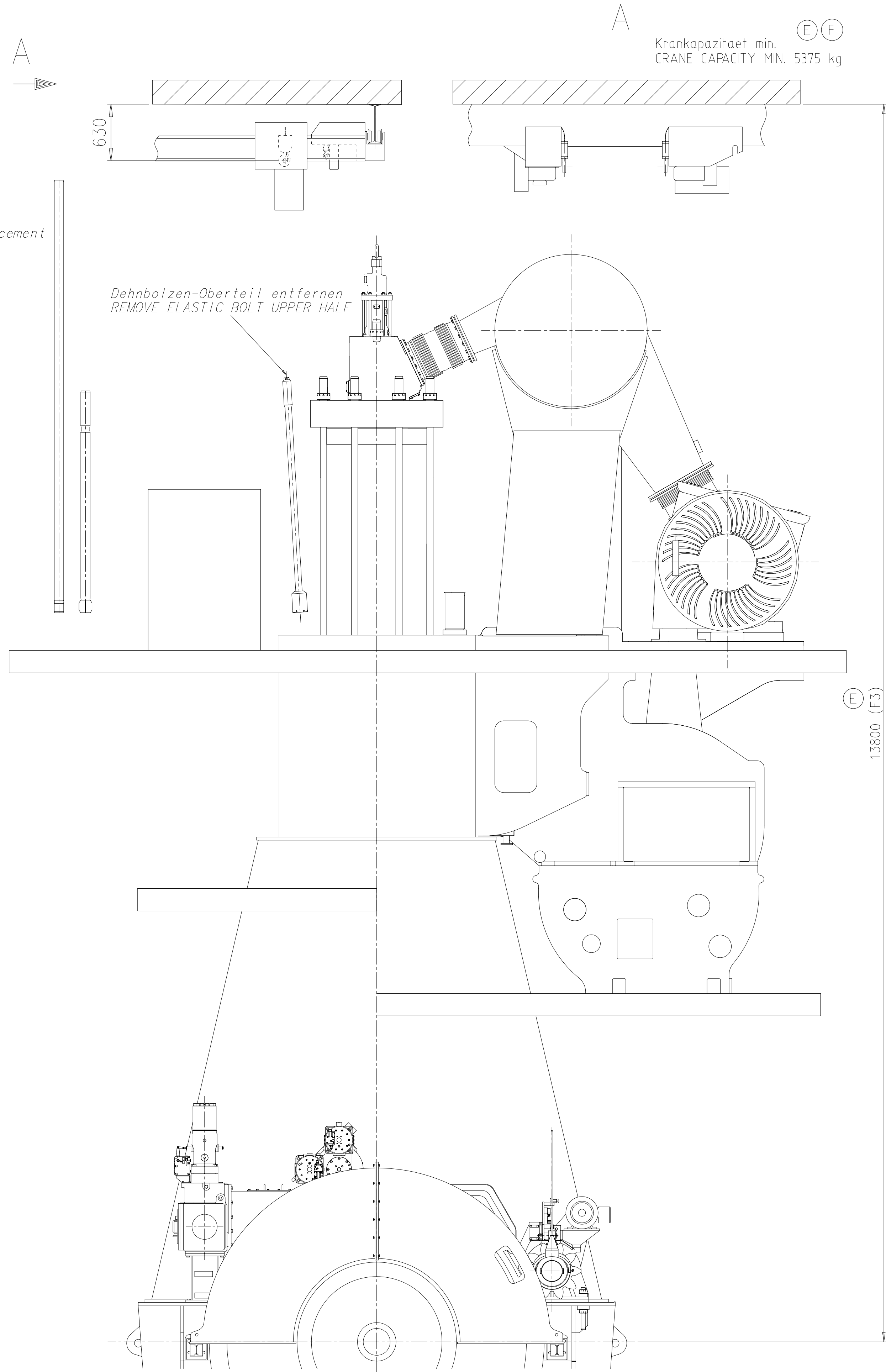
	Part Space for drawing					D-Code XXXXXX Standard ISO: JIS	Pin Dwg					
Model	C EAAD0842329.01.2013	D EAAD0847380.07.08.2013	E EAAD0846486.24.10.2013	F EAAD09495	G22.04.2020							
	Number	Drawn date	Number	Drawn date	Number	Drawn date						
 WIN GD Winther Gas & Steel		Model W-B2		DISMANTLING DIMENSIONS								
mm kg		N/A		Ausbaumasse								
				Basic Material								
				Net weight 0.0100								
Model	G23.01.2013	Inch01	Neuenschwand	Spoke	t25	Size	A0	Page	1	Material	0	107.404.311.001
Chsd				Design Group								
Appd	29.08.2008	BHA009	Hiasg	0812	0	Dwigs	1	107.404.311			Rev.	F
2768-100												

Approved

100 - DIMENSIONAL DRAWING - Confidential



Twin Tie Rod for replacement
Zuganker
TIE ROD



1. Disassembly of exhaust valve cage, cylinder cover and upper water guide jacket
2. Disassemble two cylinder cover bolts on fuel side
3. Pull out the piston with standard piston disassembly tool, then attach tool for further lifting
4. Proceed with tilted piston removal
5. Place piston on support for overhaul

6. Put the pins for liner lifting tool into designated holes
7. Attach crane hooks for lifting
8. Pull out the liner until over top of rail unit
9. Move liner over rail unit and put in designated place for overhaul

Voraussetzungen fuer diese Art von Ausbau!

- Pro Zylinder 2 zweiteilige Zylinderdeckel-Dehnbolzen auf der Brennstoffpumpenseite.
- Spezialwerkzeuge
- Spezialkran (DOUBLE JIB), von FUCHS FOERDERTECHNIK AG, 22113 OSTEINBEK, Deutschland (www.fuchs-ag.de)
- Mindesttragkraft pro Haken 6,5 Tonnen, Hakenabstand 1385mm.

(E) - zweiteilige Zuganker

REQUIREMENTS FOR THIS METHOD OF REMOVAL!

- PER CYLINDER 2 TWO PIECE ELASTIC STUDS FOR CYLINDER COVER ON FUEL SIDE.
- SPECIAL TOOLS
- SPECIAL CRANE (DOUBLE JIB), BY FUCHS FOERDERTECHNIK AG, 22113 OSTEINBEK, GERMANY (www.fuchs-ag.de)
- MINIMUM LIFTING CAPACITY PER HOOK 6.5 TONS, HOOK DISTANCE 1385MM.

(E) - TWIN TIE-ROD

Ⓢ Standardausbau mit Double-Jib Kran


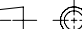
Minimale Hoehe fuer den gekippten Ausbau mit dem Double-Jib Kran: F3
Die Distanz von den obersten Hakenposition bis zur Decke variiert je nach der ausgewählten Kranausfuehrung

Für gekippten Ausbau mit Double-Jib E/R Kran von Fuchs Foerdertechnik AG

STANDARD DISMANTLING WITH DOUBLE-JIB CRANE

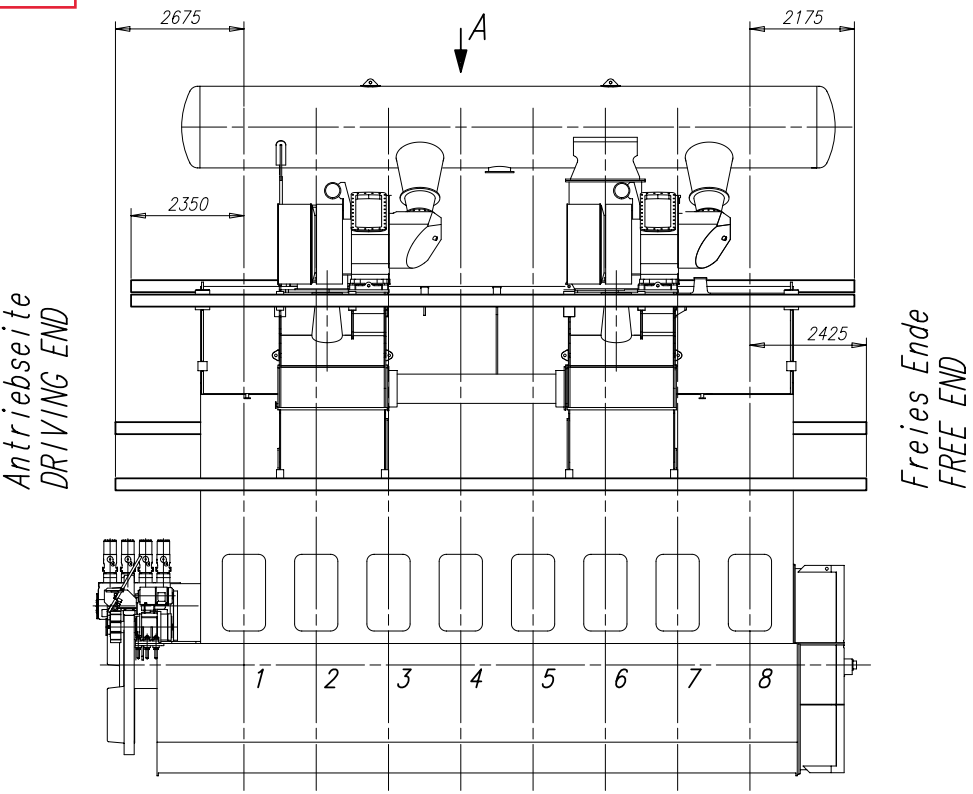
MIN. HEIGHT FOR TILTED REMOVAL WITH DOUBLE-JIB CRANE: F3
DISTANCE BETWEEN TOP POSITION OF HOOK AND ENGINE ROOM CEILING VARIES DEPENDING ON CRANE TYPE.

FOR TILTED REMOVAL WITH DOUBLE JIB E/R CRANE BY FUCHS FOERDERTECHNIK AG

Free space for dwg.				B-Code XXXXXX Standard ISO/JIS				Main Dwg.									
Modif.	C	EAAAD08423	29.01.2013	D	EAAAD084738	07.08.2013	E	EAAAD084896	24.10.2013	F	EAAAD091695	22.04.2020					
Number		Drawn date		Number		Drawn date		Number		Drawn date							
Product W-82				DISMANTLING DIMENSIONS													
 Winterthur Gas & Diesel				Ausbau Masse													
Units				mm	kg	NX				Basic Material		Net weight	0,001				
Made				23.01.2013				Ine001		Neuenschwand		Scale	1:25				
Chd										Design Group		Size	A0	Page	3/3	Material	107.404.311.500
Aspt				29.08.2008				BHA009		Hagq		0812	Drawing	107.404.311	Rev.	F	

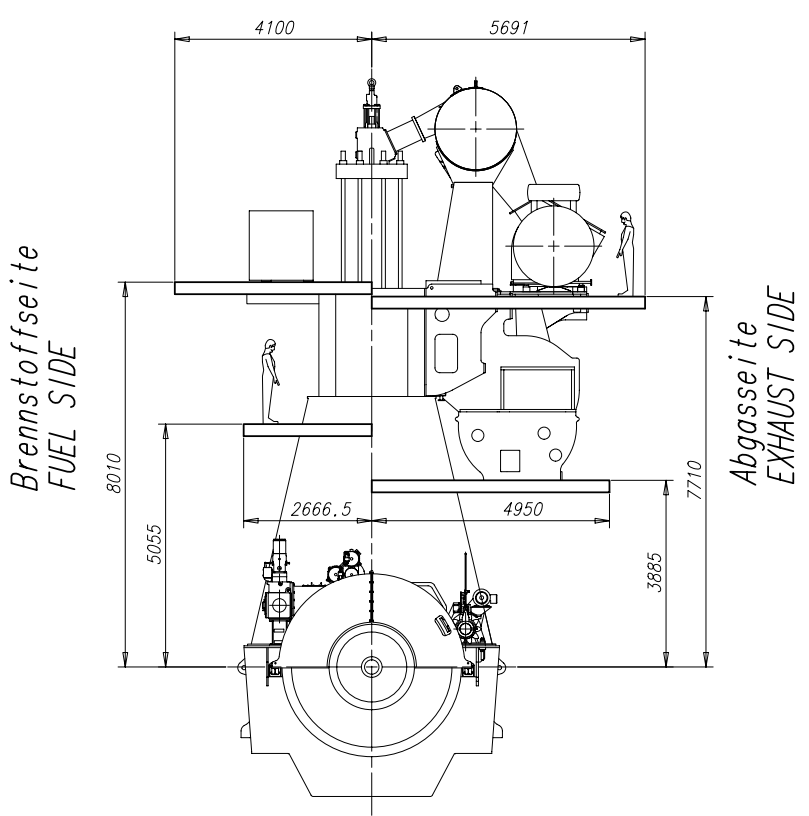
Download
"DXF file"

Abgasseite
EXHAUST SIDE



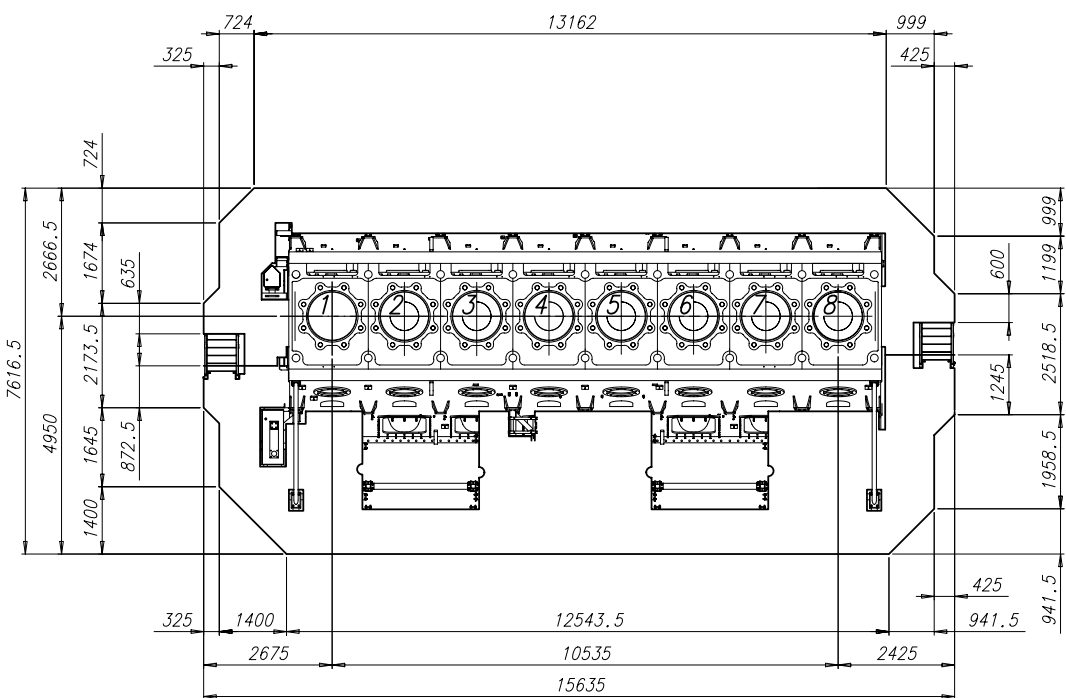
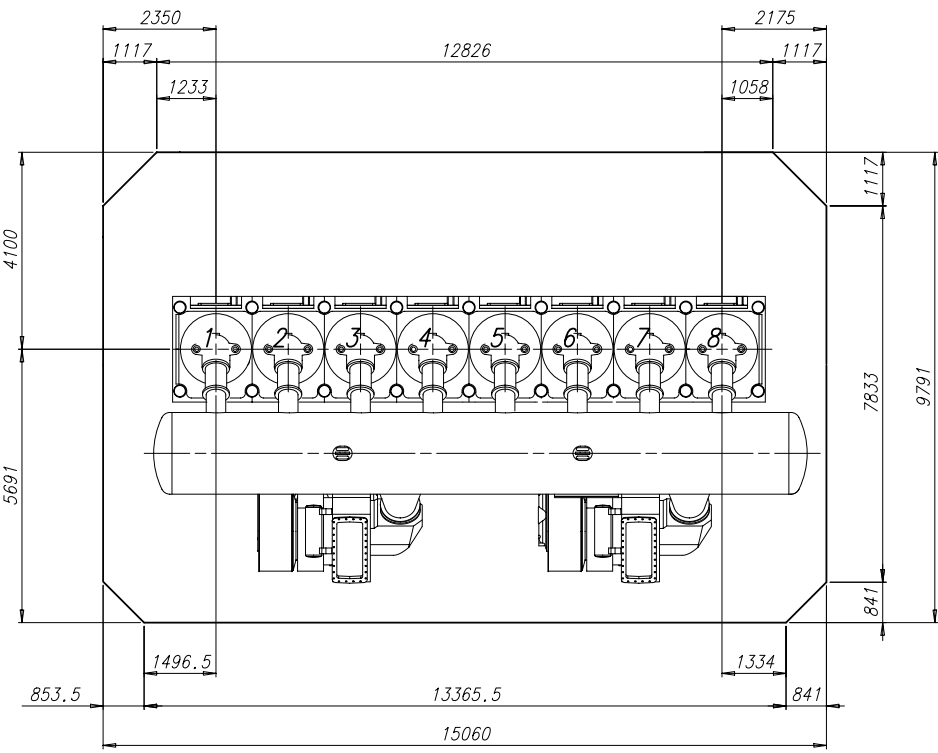
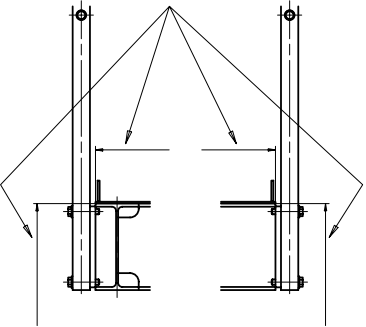
A Obere Galerie
UPPER PLATFORM

Antriebsseite
DRIVING END



A Untere Galerie
LOWER PLATFORM

Die angegebenen Masse beziehen sich immer auf das Ende und die Oberkante der Galerie.
Nicht berücksichtigt ist das Bodenblech und die Gelaenderstaebe und deren Befestigung.
IN EACH CASE THE MEASURES GIVEN REFER TO THE END AND TOP EDGE OF THE PLATFORM.
THE BOTTOM PLATE AND THE RAILING STICKS AND THEIR MOUNTING ARE UNACCOUNTED FOR.



Elevated upper platform FPS
TURBOCHARGER: 2xA175
2xA180
2xA275
2xA280

gezeichnet fuer Turbolader A175/275
DRAWN FOR TURBOCHARGER

Free space for file		Q-Code XXXXX		Main Drw.	
Standard		ISO		JIS	
Matr.	Number	Drawn date	Number	Drawn date	Number
Product		W-2S		PLATFORM ARRANGEMENT PLAN	
Galerie Anordnungsplan		PAAD122391		Rev.	
Units	mm	kg	IDE	Basic Material	Net Weight 0.001
SURFACE PROTECTION SEE GROUP 0344		Made 09.04.2013 szux01 Zuercher		Scale 1:75	
TOLERANCING PRINCIPLE ISO8015		Chkd 11.04.2013 hr1004 Riser		Design Group	
GENERAL TOLERANCES ACCORDING TO ISO2768-mK		Appd 12.04.2013 bha009 Hoag		Drawing ID DAAD038061	

WinGD-8X82-B _Engine-outline-views

TRACK CHANGES

DATE	SUBJECT	DESCRIPTION
2018-02-26	DRAWING SET	First web upload
2020-07-16	107.404.311	Revised Dismantling Dimensions drawing has been updated.

DISCLAIMER

© Copyright by Winterthur Gas & Diesel Ltd.

All rights reserved. No part of this document may be reproduced or copied in any form or by any means (electronic, mechanical, graphic, photocopying, recording, taping or other information retrieval systems) without the prior written permission of the copyright owner.

THIS PUBLICATION IS DESIGNED TO PROVIDE AN ACCURATE AND AUTHORITATIVE INFORMATION WITH REGARD TO THE SUBJECT-MATTER COVERED AS WAS AVAILABLE AT THE TIME OF PRINTING. HOWEVER, THE PUBLICATION DEALS WITH COMPLICATED TECHNICAL MATTERS SUITED ONLY FOR SPECIALISTS IN THE AREA, AND THE DESIGN OF THE SUBJECT-PRODUCTS IS SUBJECT TO REGULAR IMPROVEMENTS, MODIFICATIONS AND CHANGES. CONSEQUENTLY, THE PUBLISHER AND COPYRIGHT OWNER OF THIS PUBLICATION CAN NOT ACCEPT ANY RESPONSIBILITY OR LIABILITY FOR ANY EVENTUAL ERRORS OR OMISSIONS IN THIS BOOKLET OR FOR DISCREPANCIES ARISING FROM THE FEATURES OF ANY ACTUAL ITEM IN THE RESPECTIVE PRODUCT BEING DIFFERENT FROM THOSE SHOWN IN THIS PUBLICATION. THE PUBLISHER AND COPYRIGHT OWNER SHALL UNDER NO CIRCUMSTANCES BE HELD LIABLE FOR ANY FINANCIAL CONSEQUENTIAL DAMAGES OR OTHER LOSS, OR ANY OTHER DAMAGE OR INJURY, SUFFERED BY ANY PARTY MAKING USE OF THIS PUBLICATION OR THE INFORMATION CONTAINED HEREIN.