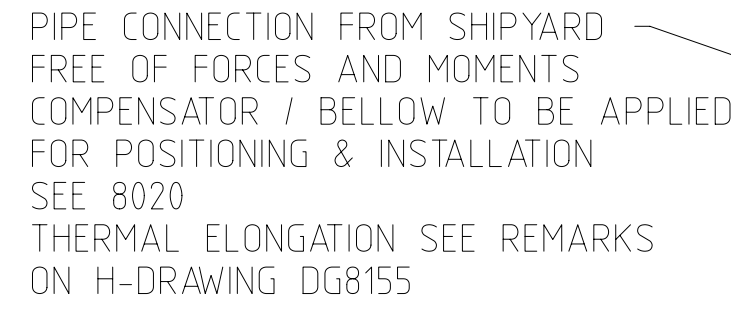
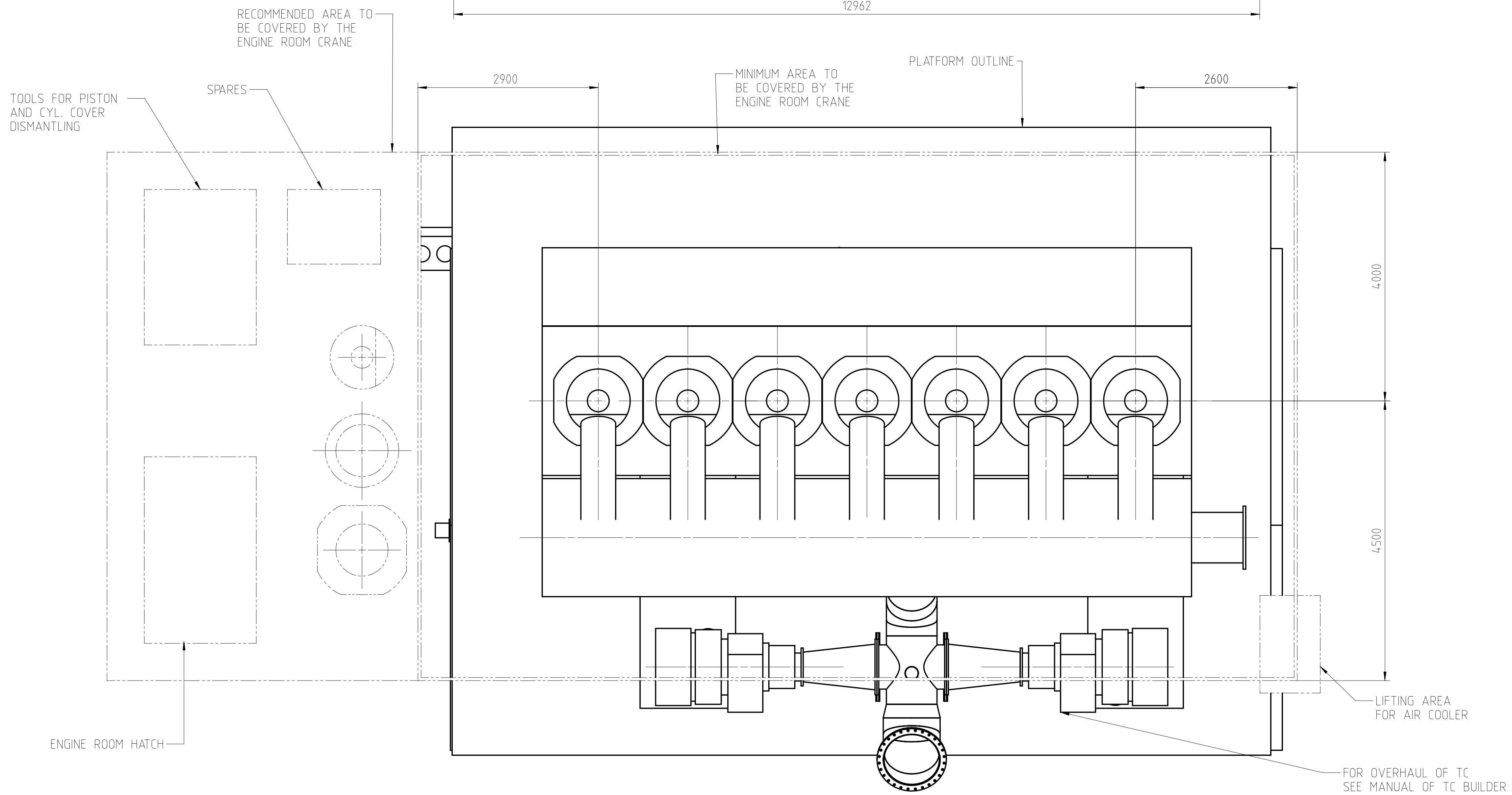
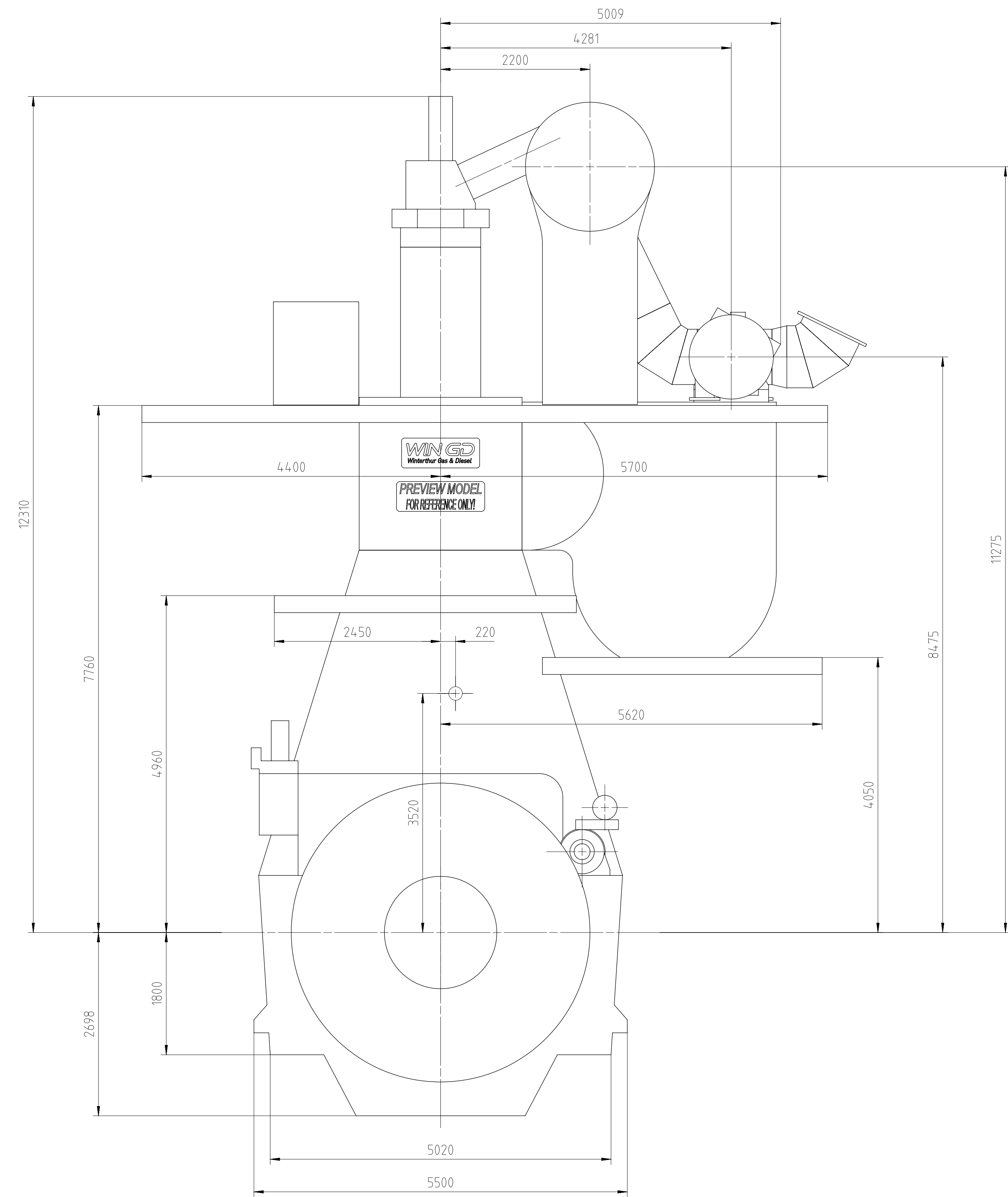


Download
"DXF file"



PIPE CONNECTION FROM SHIPYARD
FREE OF FORCES AND MOMENTS
COMPENSATOR / BELLOW TO BE APPLIED
FOR POSITIONING & INSTALLATION
SEE 8020
THERMAL ELONGATION SEE REMARKS
ON H-DRAWING DG8155






 = ca. Schwerpunkt
APPROX. CENTRE OF GRAVITY

Gewicht ohne Wasser und Öl = 903 t
WEIGHT WITHOUT WATER AND OIL

TURBOCHARGER 2x A265-L

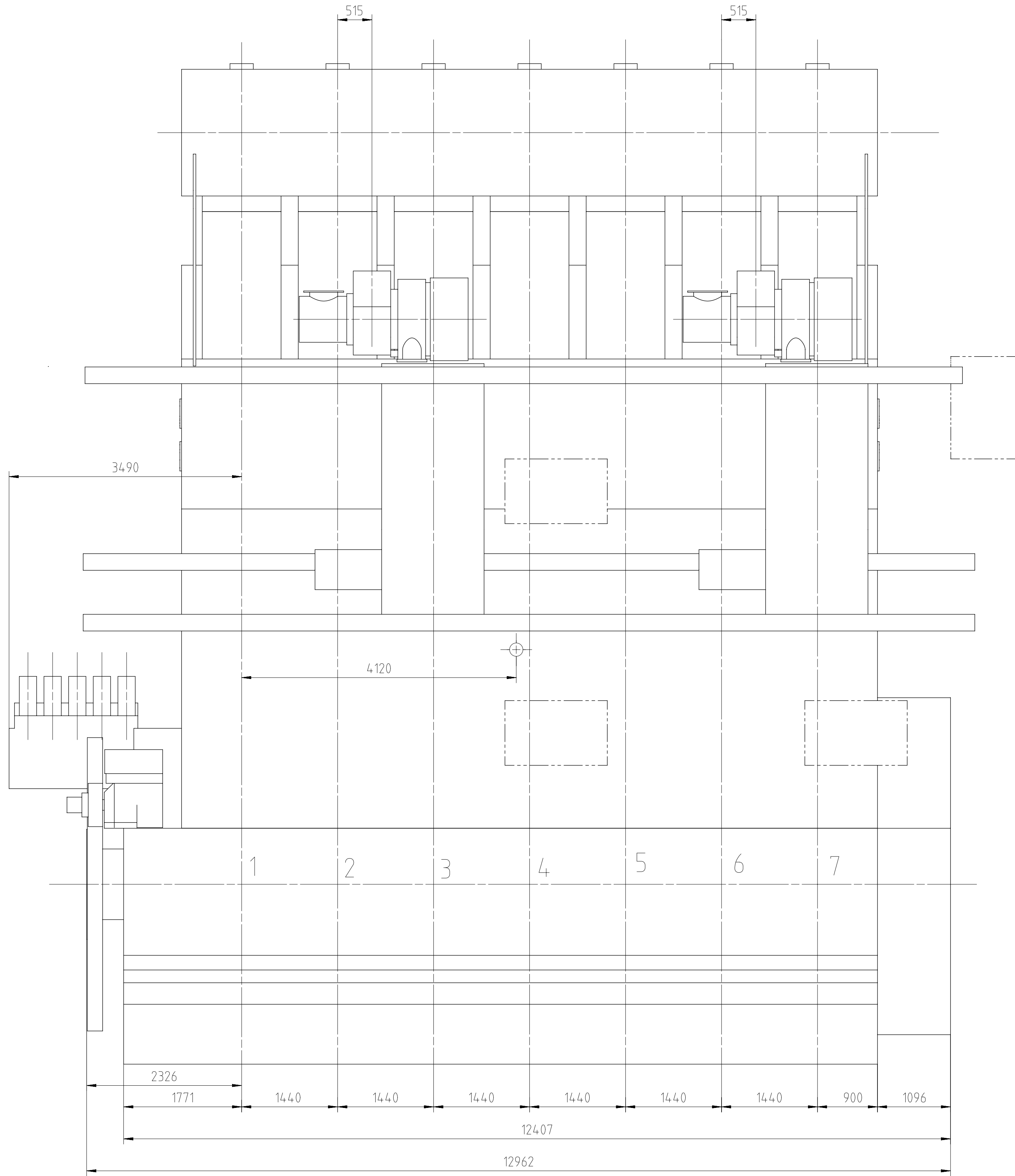
DIMENSIONS FOR REFERENCE ONLY!
THIS OUTLINE DRAWING CAN NOT
BE USED FOR FINAL DESIGN !
PLEASE TAKE THE CORRESPONDING
DESIGN GROUP!

Model	The price	The date							G-Code XXXXXX Standard ISO, JIS	Main Drw H				
			Number	Drawn date	Number	Drawn date	Number	Drawn date	Number	Drawn date				
 WINGD Winterthur Gas & Diesel			Product 7X82-2.0			ENGINE OUTLINE VIEW HP SCR Motoransichten HP SCR								
Units	mm kg	NX	  Basic Material		Scale	1:4.0	Size	A0	Page	1/1	Material		Net Weight	0.001
Model	01.02.2021	wh101 fan												
Model	05.02.2021	r1002 Flegans				Design Group								
Model	05.02.2021	mds06 Dacic				0812	Drawing ID	DAAD139213					Rev.	
<div><div>PAAD372846</div><div>0812</div><div>DAAD139213</div></div>														

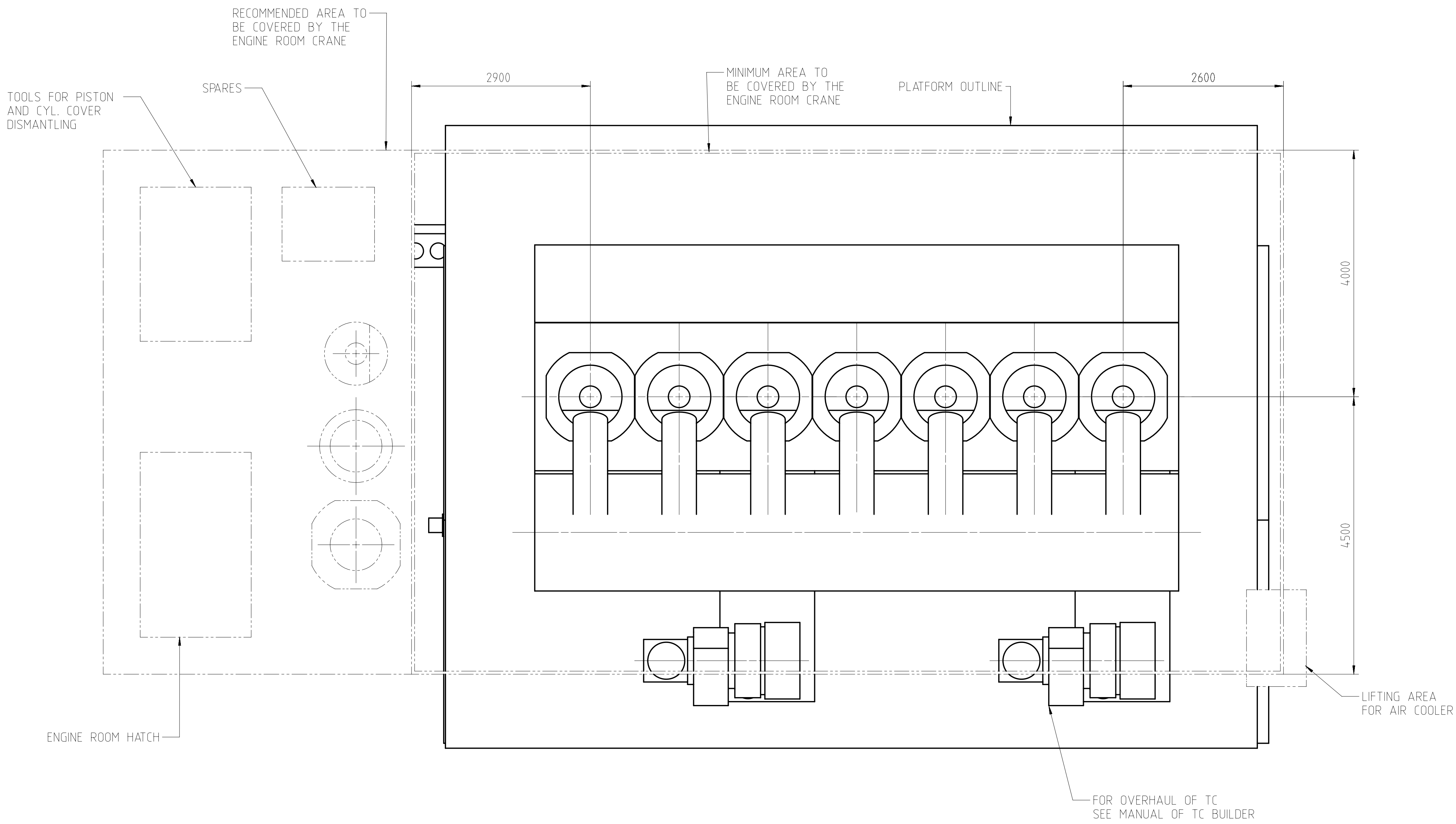
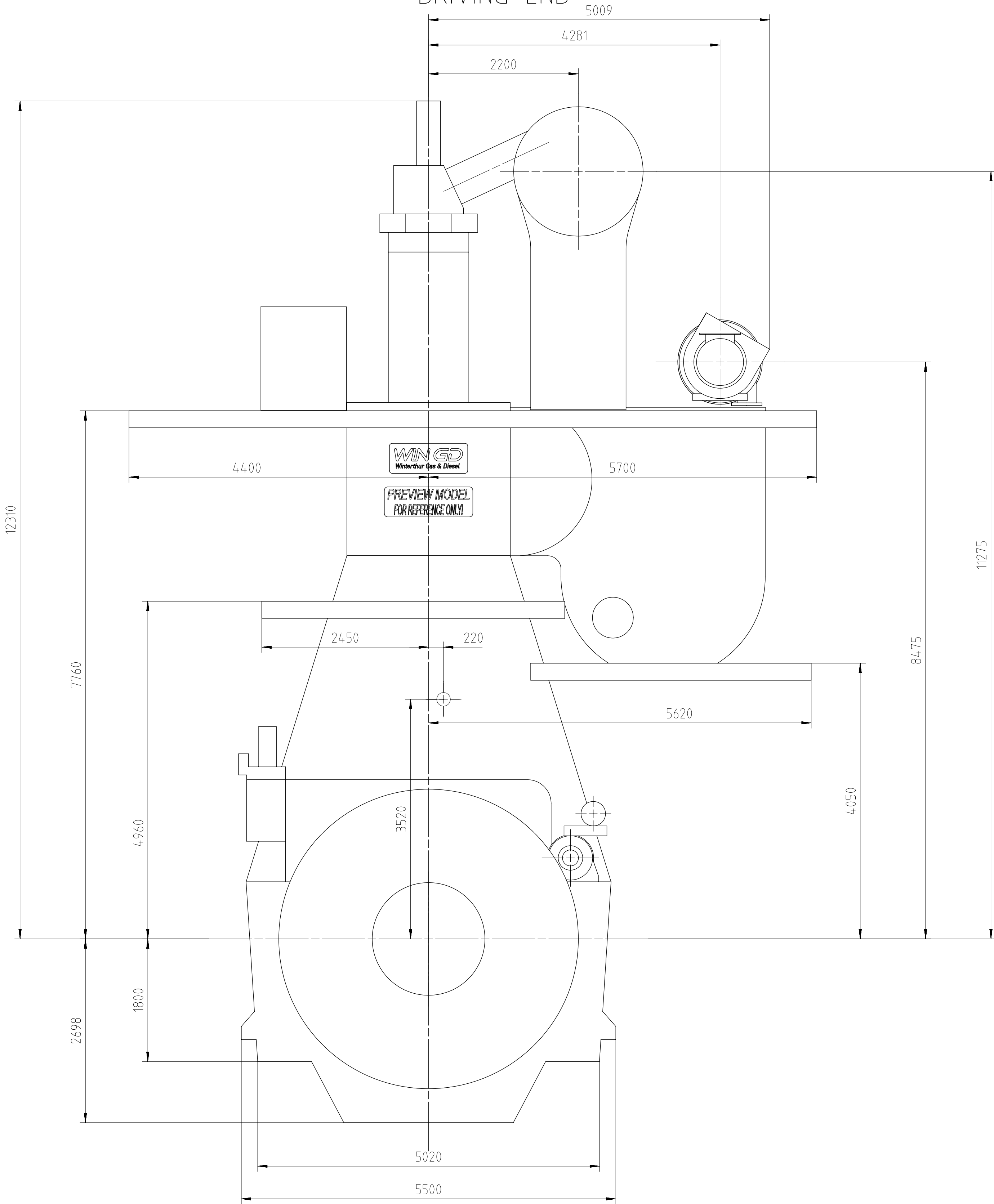
SURFACE PROTECTION SEE GROUP 0344	Made	01.02.2021	who101 Tan	Scale	1:40	Size	A0	Page	1/1	Material	PAAD372846
TOLERANCING PRINCIPLE ISO8015	Chkd	05.02.2021	rk002 Filegans	Design Group	0812	Drawing	D	DAAD139213		Rev.	-
GENERAL TOLERANCES ACCORDING TO ISO2768-mK	Appd	05.02.2021	mds006 Dacic								

Download
"DXF file"

Abgasseite
EXHAUST SIDE



Antriebsseite
DRIVING END






○ = ca. Schwerpunkt
APPROX. CENTRE OF GRAVITY

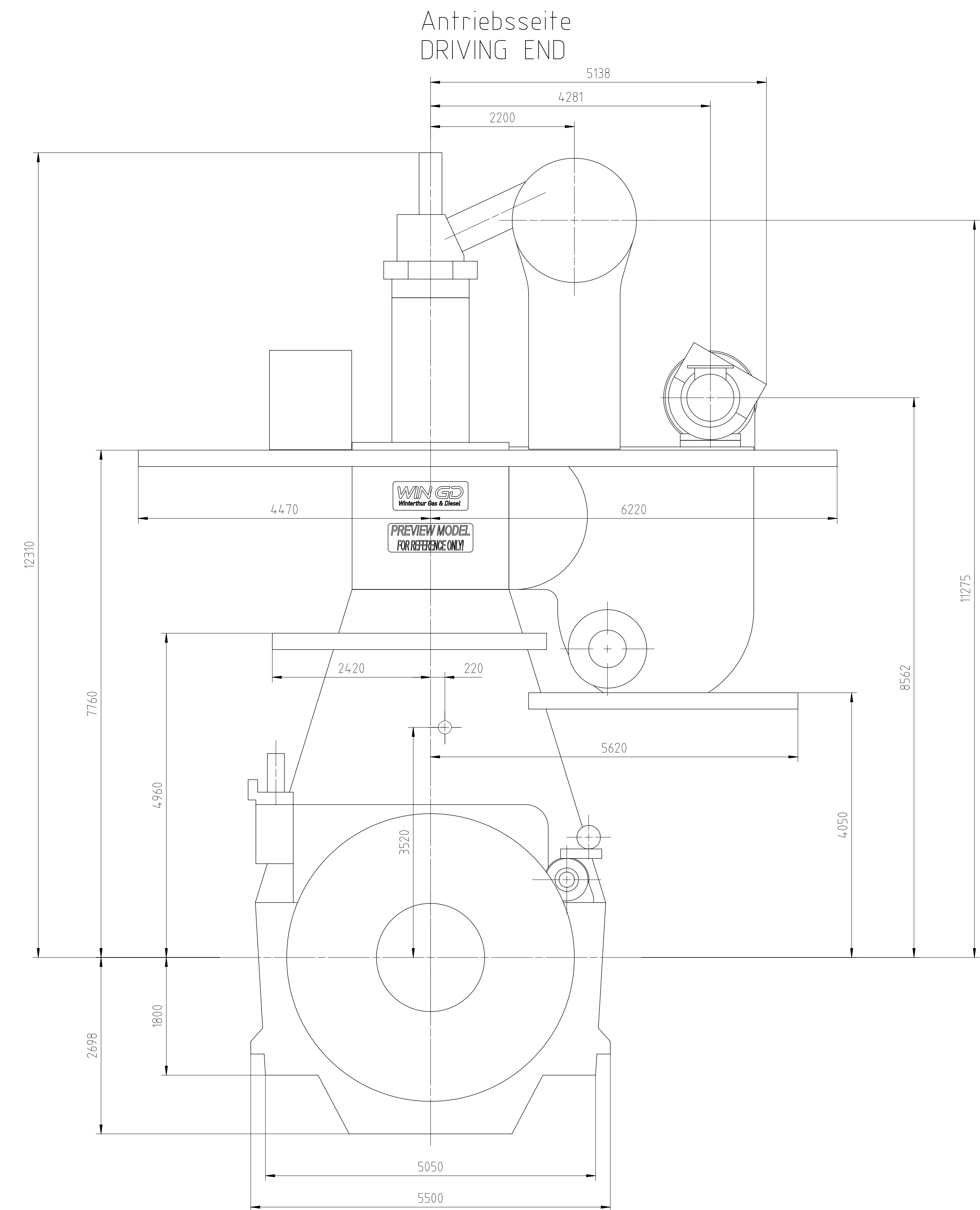
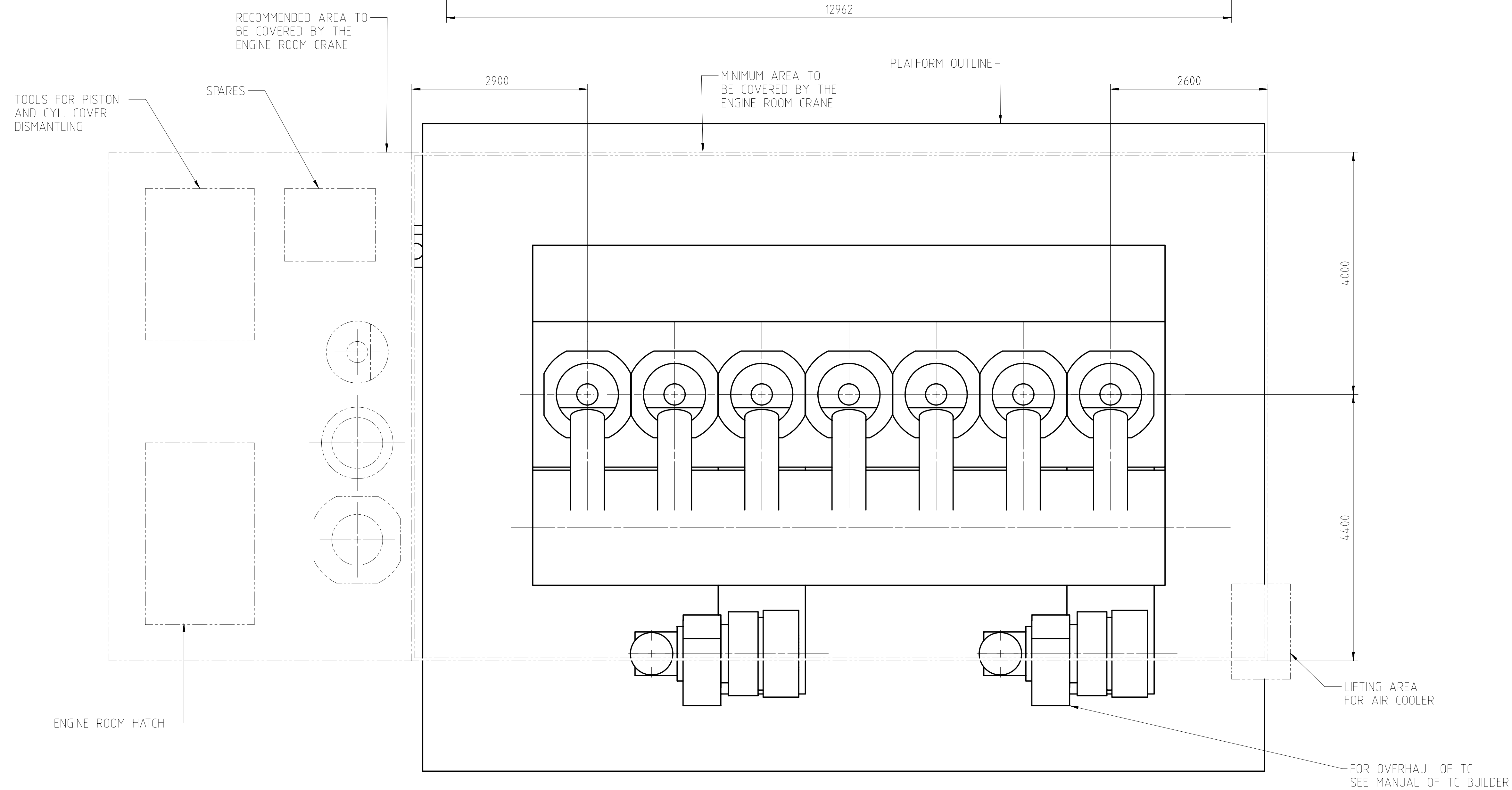
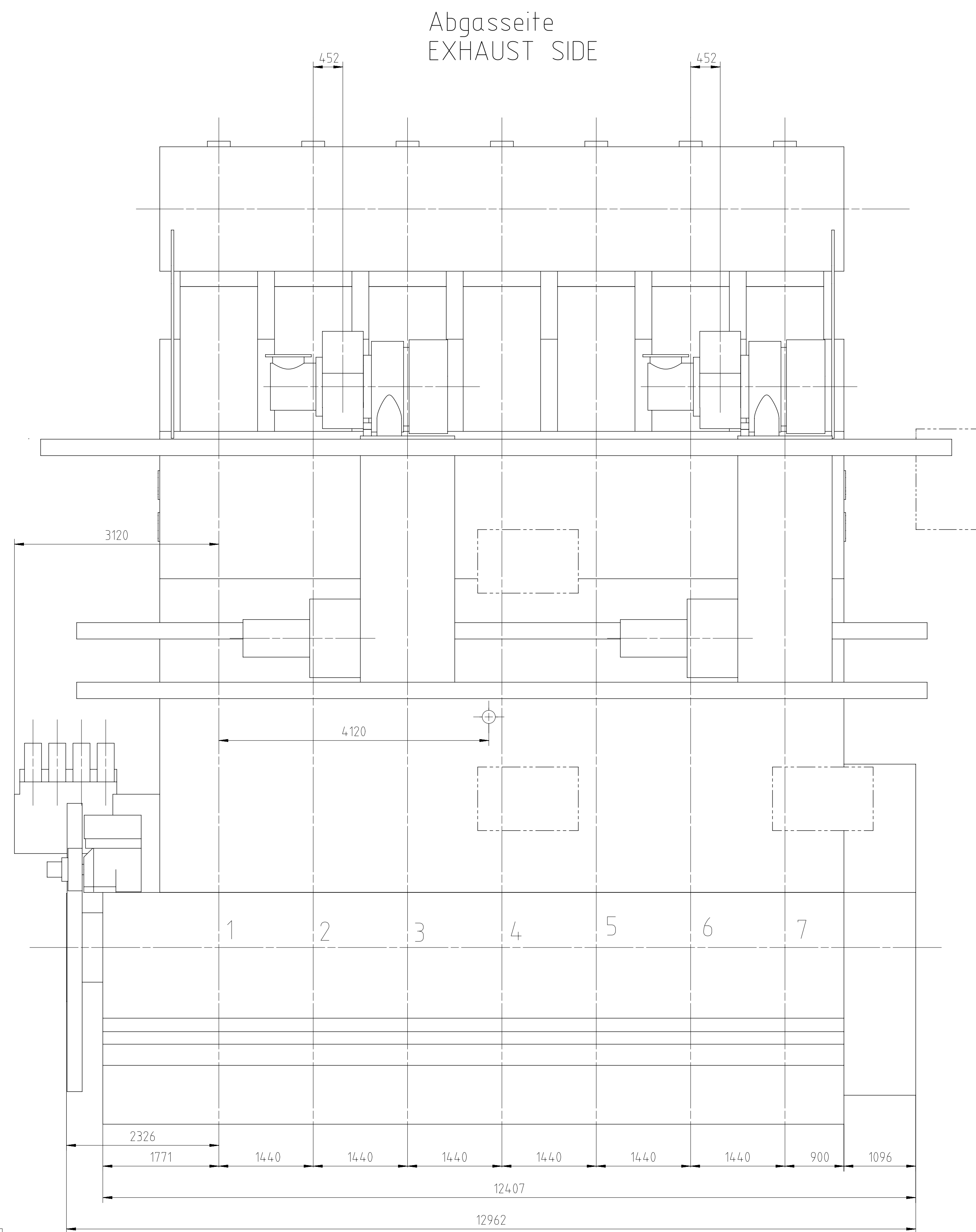
Gewicht ohne Wasser und Öl = 903 t
WEIGHT WITHOUT WATER AND OIL

TURBOCHARGER 2x A265-L

DIMENSIONS FOR REFERENCE ONLY!
THIS OUTLINE DRAWING CAN NOT
BE USED FOR FINAL DESIGN !
PLEASE TAKE THE CORRESPONDING
DESIGN GROUP!




Free Space for use							B-Code XXXXXX Standard ISO/JIS		Plan Drawn H		
Model	Number	Drawn date	Number	Drawn date	Number	Drawn date	Number	Drawn date			
Product 7X82-2.0				ENGINE OUTLINE VIEW Motoransichten							
 Winterthur Gas & Diesel											
Units	mm kg	NX			Basic Material		Net weight 0,001				
Drawn	01.02.2021	w101	Ten	Scale	1:1.0	Size	A0	Page	1/1	Material	PAAD373163
Chkd	05.02.2021	r1002	Filegans	Design Group							
Asst	05.02.2021	mds006	Daclic	0812	Drawing	DAAD139362				Rev	-

Download
"DXF file"



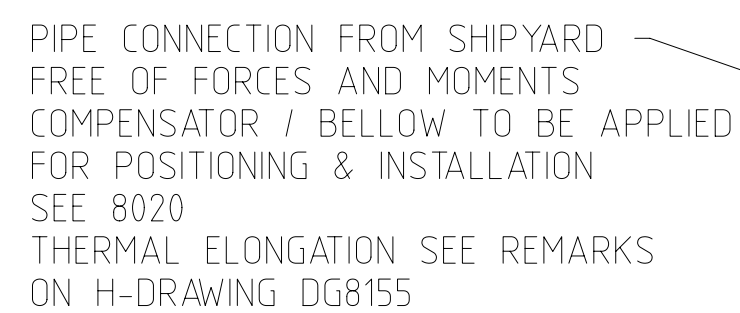
 = APPROX. CENTRE OF GRAVITY
WEIGHT WITHOUT WATER AND OIL = 903 t

TURBOCHARGER 2x A270-L

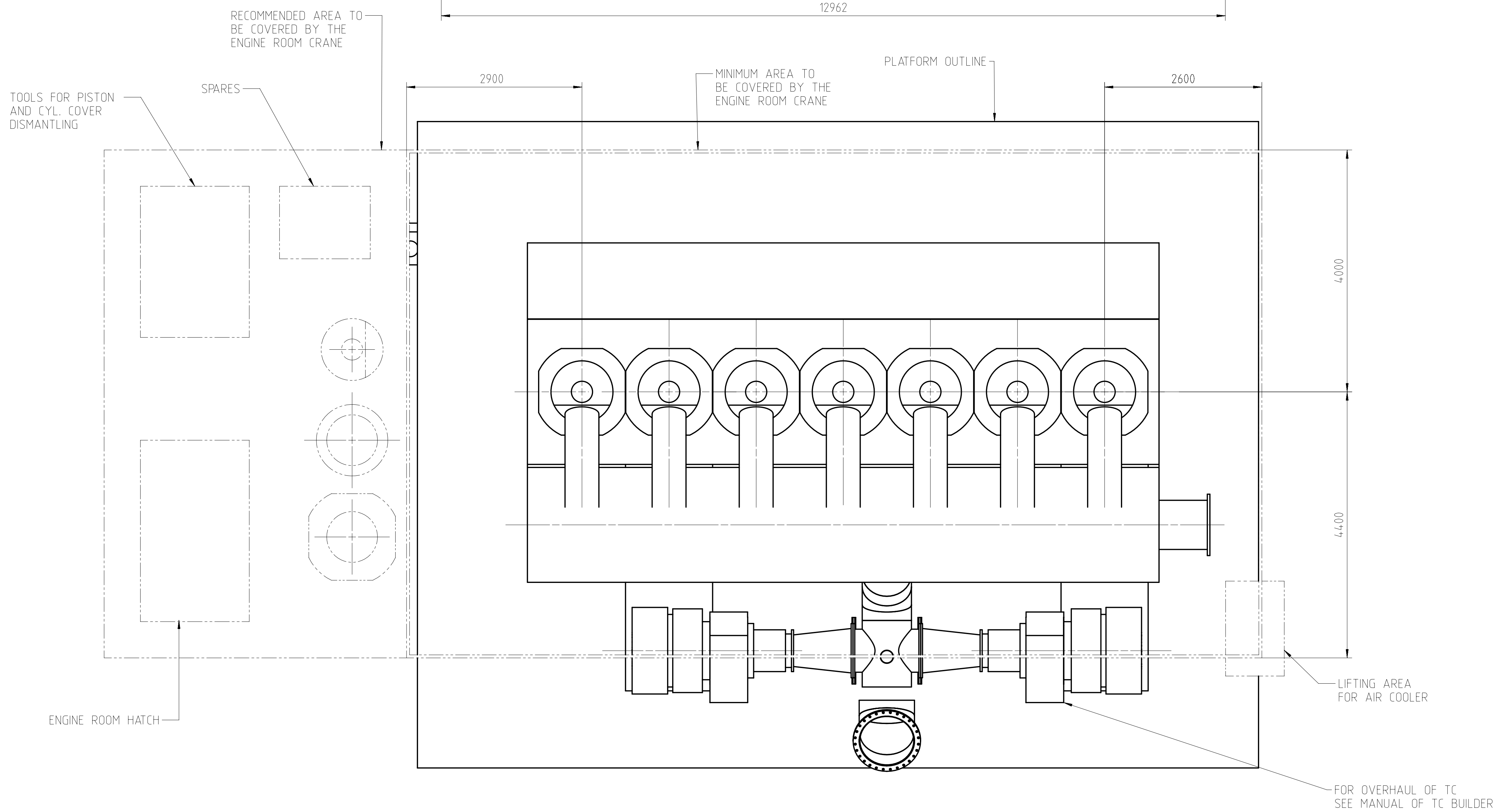
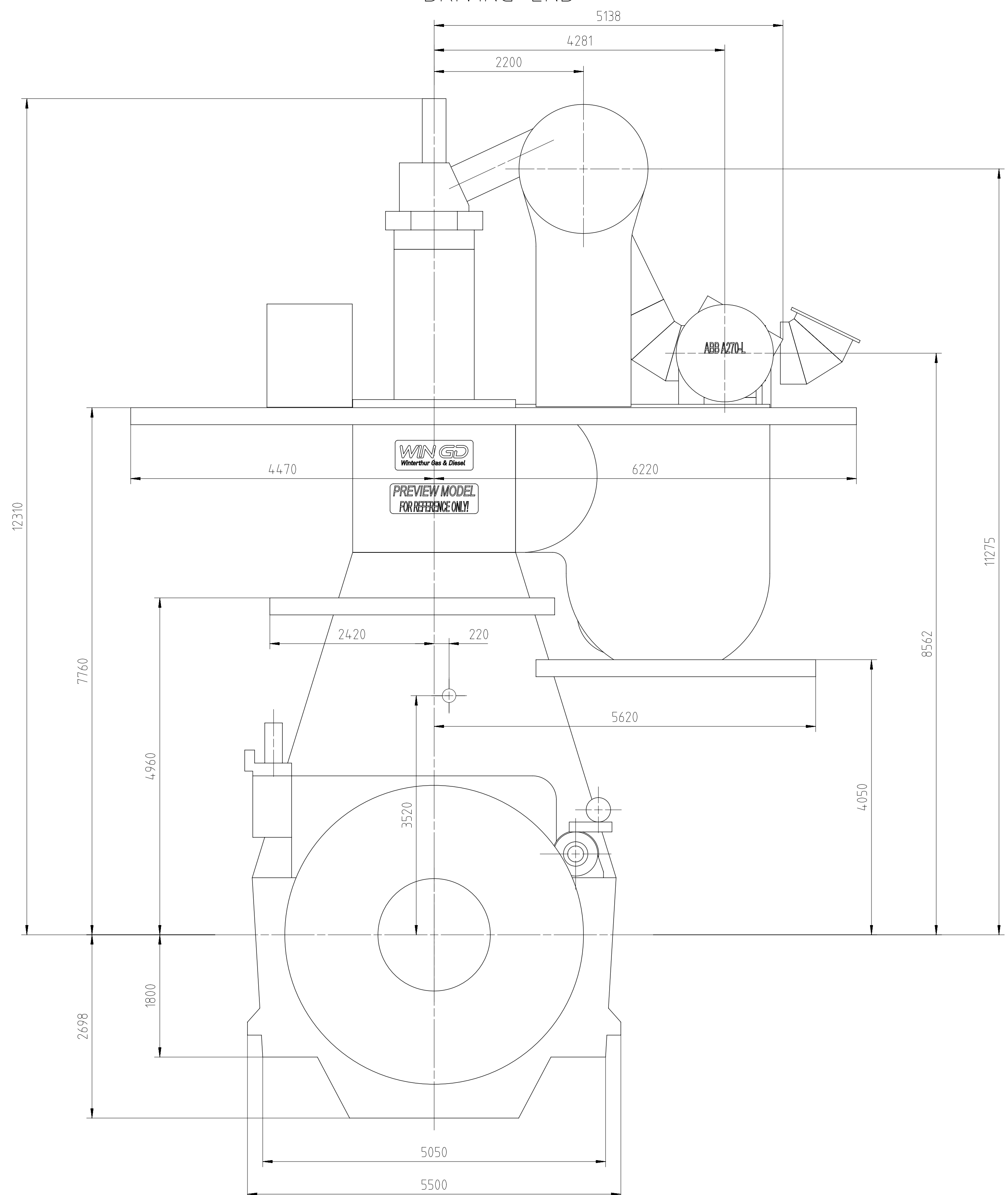
Print	7XR2-2-0								
Change History									
	-	ya101	14.07.2021	CNA0000335	main drawing introduced				-
Rev.	Creator	Approver	Approval Date	Change ID	Change Summary			Approved	Activity Code
								E	C
				ENGINE OUTLINE VIEW					
separate BOM available				Dimension					
Scale: 1/40   NX				Units: [mm]		[kg]	Basic Material		Net Weight
Copyright WinGDur Gas Diesel Ltd. All rights reserved. By using preparation of this drawing the recipient acknowledges that he/she is not allowed to use this drawing for other than the intended purpose. If this drawing has to be used in any way not intended, the user must obtain the necessary permission from the sender. In any way not made accessible to third parties without the consent of the sender of this drawing.				Main Design		Yes	Design Group	0812	G-Code XXXXX
City Jel		Engine		A0	Item ID	P TAA004682			Drawing Pages
									WDS

DIMENSIONS FOR REFERENCE ONLY!
THIS OUTLINE DRAWING CAN NOT
BE USED FOR FINAL DESIGN!
PLEASE TAKE THE CORRESPONDING
DESIGN GROUP!

Download
"DXF file"



PIPE CONNECTION FROM SHIPYARD
FREE OF FORCES AND MOMENTS
COMPENSATOR / BELLOW TO BE APPLIED
FOR POSITIONING & INSTALLATION
SEE 8020
THERMAL ELONGATION SEE REMARKS
ON H-DRAWING DG8155



⊙ = APPROX. CENTRE OF GRAVITY
WEIGHT WITHOUT WATER AND OIL = 903 t

TURBOCHARGER 2x A270-L

[illegible]

DIMENSIONS FOR REFERENCE ONLY!
THIS OUTLINE DRAWING CAN NOT
BE USED FOR FINAL DESIGN !
PLEASE TAKE THE CORRESPONDING
DESIGN GROUP!

Abgasseite
EXHAUST SIDE

PIPE CONNECTION FROM SHIPYARD
FREE OF FORCES AND MOMENTS
COMPENSATOR / BELLOW TO BE APPLIED
FOR POSITIONING & INSTALLATION
SEE 8020
THERMAL ELONGATION SEE REMARKS
ON H-DRAWING DG8155

PIPE CONNECTION FROM SHIPYARD
FREE OF FORCES AND MOMENTS
COMPENSATOR / BELLOW TO BE APPLIED
FOR POSITIONING & INSTALLATION
SEE 8020
THERMAL ELONGATION SEE REMARKS
ON H-DRAWING DG8155

Antriebsseite
DRIVING END

⊙ = APPROX. CENTRE OF GRAVITY
WEIGHT WITHOUT WATER AND OIL = 903 t

TURBOCHARGER 2x MET53MB-II

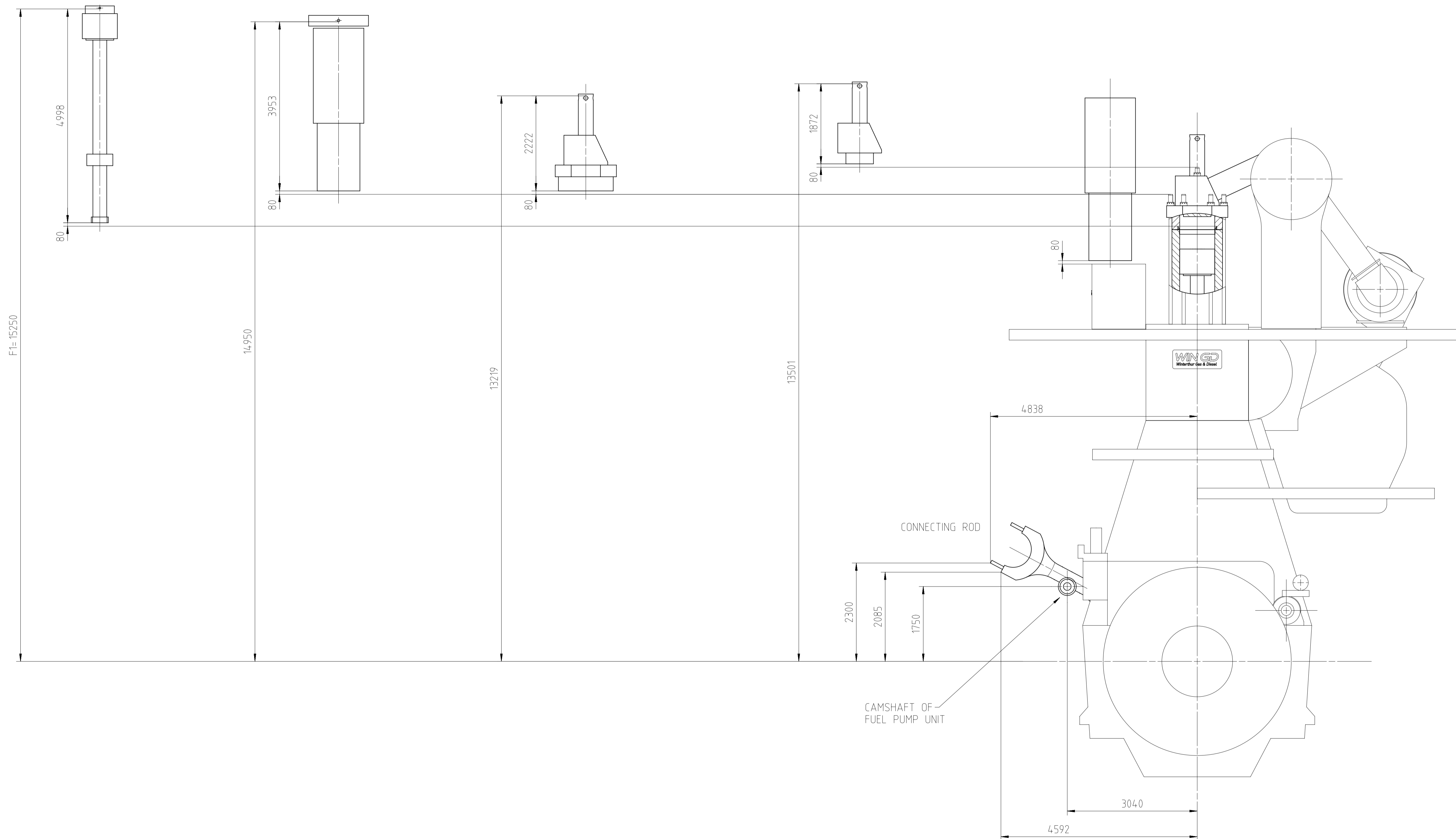
DIMENSIONS FOR REFERENCE ONLY!
THIS OUTLINE DRAWING CAN NOT
BE USED FOR FINAL DESIGN !
PLEASE TAKE THE CORRESPONDING
DESIGN GROUP!


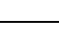
TXB2-2.0									
Prod.									
Change History	A	ypu101	stb017	17.11.2021	CH04001041	SCR outlet dimension has been corrected			4 3
	-	ypu101	stb017	12.11.2021	CH04001003	Main Design/Drawing Introduced			- -
	Rev.	Creator	Approver	Approval Date	Change ID	Change Synopsis	Approved	Activity Code	E C
WIN GD Winterthur Gas & Diesel									
ENGINE OUTLINE VIEW HP SCR									
Dimension									
Scale	1:4.0	1:4.0	1:4.0	1:4.0	1:4.0	1:4.0	1:4.0	1:4.0	1:4.0
Units	[mm]	[kg]	[kg]	[kg]	[kg]	[kg]	[kg]	[kg]	[kg]
Basic Material									
Design	Yes	Design	Yes	Design	Yes	Design	Yes	Design	Yes
Qty	Engine	A0	Item	22	Item	22	Item	22	Item
Standard	0812 Q-Code XXXXX								
WDS	PTAA019154								
Drawing	1/1								
Papers									

SURFACE PROTECTION SEE GROUP 0344
TOLERANCING PRINCIPLE ISO8015
GENERAL TOLERANCES ACCORDING TO ISO2768-mK

Copyright Winterthur Gas & Diesel Ltd. All rights reserved.
No part of this drawing may be reproduced, stored in a retrieval system, or transmitted in any form or by any means, electronic, mechanical, photocopying, recording, or otherwise, without prior written permission from Winterthur Gas & Diesel Ltd.

Download
"DXF file"



Pos.	6.7.8.9X82-2.0									
Change History	A	rra102	mda006	09.05.2022	CNAA001695	Crane capacity has been change 10400 to 10000 kg		4	3	
	-	ffa015	mda006	01.03.2021	-			-	-	
	Rev.	Creator	Approver	Approval Date	Change ID	Change Synopsis	Approved	Activity Code	E C	
					DISMANTLING DIMENSIONS					
					Dimension					
Scale	1:50			NX	Units [mm] [kg]		Basic Material		Net Weight	0.000
Copyright Winterthur Gas & Diesel Ltd. All rights reserved. By taking possession of the drawing the recipient recognises and assumes these rights. Neither the drawing nor any part of this drawing may be used in any way for construction, fabrication, marketing or any other purpose nor copied in any way nor made accessible to third parties without the previous written consent of Winterthur Gas & Diesel Ltd.										
Main Design	Yes	Design Group		0816	Q-Code		XXXXXX	Standard	WDS	
Qty per	Engine	A1	Item ID	PAAD373080				Drawing Page/s	1/1	

WinGD-7X82-S2.0_Engine Outline Views

TRACK CHANGES

DATE	SUBJECT	DESCRIPTION
2021-05-17	DRAWING SET	First web upload
2021-09-14	PTAA004682 PTAA004683	New Engine outline view drawings for Turbocharger type 2xA270-L for LP-HCR and HP-SCR have been added.
2021-12-01	PTAA019154	New Engine outline view drawings for Turbocharger type 2xMET 53MB-II has been added.
2022-08-26	PAAD373080	Dismantling Dimensions drawing has been added.

DISCLAIMER

© Copyright by Winterthur Gas & Diesel Ltd.

All rights reserved. No part of this document may be reproduced or copied in any form or by any means (electronic, mechanical, graphic, photocopying, recording, taping or other information retrieval systems) without the prior written permission of the copyright owner.

THIS PUBLICATION IS DESIGNED TO PROVIDE AN ACCURATE AND AUTHORITATIVE INFORMATION WITH REGARD TO THE SUBJECT-MATTER COVERED AS WAS AVAILABLE AT THE TIME OF PRINTING. HOWEVER, THE PUBLICATION DEALS WITH COMPLICATED TECHNICAL MATTERS SUITED ONLY FOR SPECIALISTS IN THE AREA, AND THE DESIGN OF THE SUBJECT-PRODUCTS IS SUBJECT TO REGULAR IMPROVEMENTS, MODIFICATIONS AND CHANGES. CONSEQUENTLY, THE PUBLISHER AND COPYRIGHT OWNER OF THIS PUBLICATION CAN NOT ACCEPT ANY RESPONSIBILITY OR LIABILITY FOR ANY EVENTUAL ERRORS OR OMISSIONS IN THIS BOOKLET OR FOR DISCREPANCIES ARISING FROM THE FEATURES OF ANY ACTUAL ITEM IN THE RESPECTIVE PRODUCT BEING DIFFERENT FROM THOSE SHOWN IN THIS PUBLICATION. THE PUBLISHER AND COPYRIGHT OWNER SHALL UNDER NO CIRCUMSTANCES BE HELD LIABLE FOR ANY FINANCIAL CONSEQUENTIAL DAMAGES OR OTHER LOSS, OR ANY OTHER DAMAGE OR INJURY, SUFFERED BY ANY PARTY MAKING USE OF THIS PUBLICATION OR THE INFORMATION CONTAINED HEREIN.