

(A) Specifications which must be met:

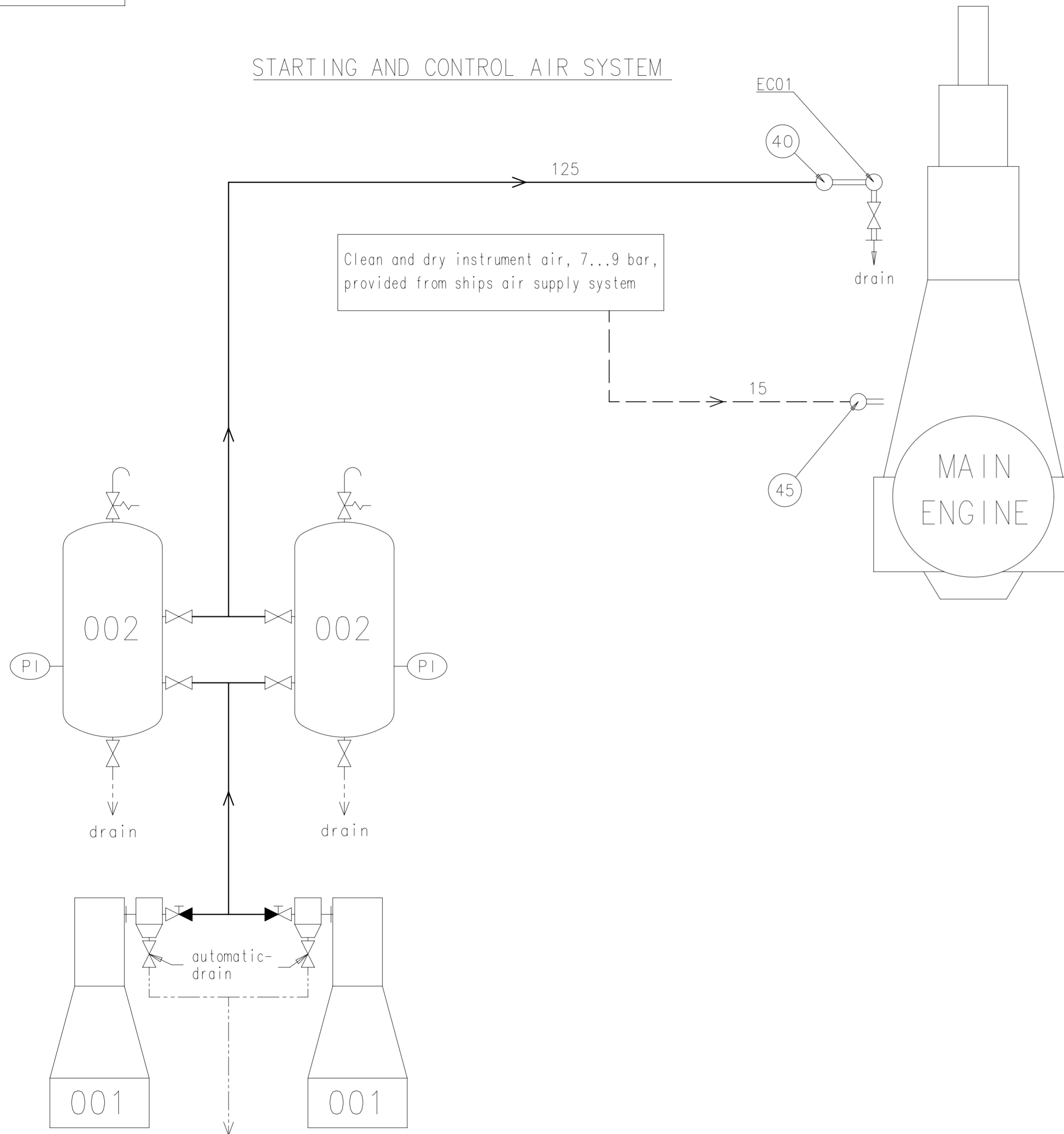
(40)	INLET - Starting air Starting air pressure: 25 or 30 bar (according to design) Capacity of starting air receivers: according to GTD
(45)	INLET - Control air Control air pressure: 7-9 bar Control air quality has to be comply with the compressed air purity class: 2-4-2 according to ISO 8573-1 (2010-04-15)

Free space for litc.	Q-Code XXXXXX						Main Drw. H
	Standard ISO; JIS						
Modif.	(A)	EAAD089439	28.05.2018				
		Number	Drawn date		Number	Drawn date	
		Product W5-8X72 W5-8X72DF W5-8X72-B		STARTING AIR SYSTEM Anlassluftsystem			
		Units mm kg NX		Basic Material		Net Weight 0,001	
SURFACE PROTECTION SEE GROUP 0344		Made	19.10.2012 asex06 A. Sekulic	Scale	-	Size A3	Page 1/2
TOLERANCING PRINCIPLE ISO8015		Chkd	07.12.2012 wwr001 Wroblewski	Design Group 9725		Material ID	PAAD103091
GENERAL TOLERANCES ACCORDING TO ISO2768-mK		Appd	10.12.2012 bha009 Haag	Drawing ID	DAAD032420		Rev. A

Approved
PD - PRODUCTION DRAWING - Confidential

SYSTEM PROPOSAL

STARTING AND CONTROL AIR SYSTEM



Pos	System Components *1)
001	Starting air compressor 25/30 bar (capacity according to GTD)
002	Starting air receiver 25/30 bar (capacity according to GTD)
Pos	Engine Connections *2)
④0	INLET - Starting air
④5	INLET - Control air (for control system and air spring)
Pos	Engine Components *3)
EC01	Distribution pipe with automatic starting air shut-off valve

Remarks: ①

- Drain plugs and drain cocks to be installed where necessary.
- Pipe diameters for starting air compressors and auxiliary equipment according to suppliers recommendations.

*1) Refer to the "Pipe Connection Plan" for the execution and location of the engine pipe connections.

*2) To be delivered by external supplier and to be installed by the shipyard.

*3) To be delivered by the engine builder. i.e. already equipped on engine side.

- Starting air feed pipes
- - - Control air pipes
- Ancillary equipment pipes
- - - - Drain pipes
- == Pipes on engine
- Pipe connections

Free space for Lic.	Q-Code XXXXX						Main Drw. H
	Standard ISO; JIS						
Modif.	①	EAAD0894.39	28.05.2018	○	○	○	○
	Number	Drawn date	Number	Drawn date	Number	Drawn date	Number
		Product W5-8X72 W5-8X72DF W5-8X72-B		STARTING AIR SYSTEM Anlassluftsystem			
Units	mm kg	NX	Basic Material		Net Weight 0,001		
SURFACE PROTECTION SEE GROUP 0344 TOLERANCING PRINCIPLE ISO8015 GENERAL TOLERANCES ACCORDING TO ISO2768-mK		Made	19.10.2012	asex06 A. Sekulic	Scale	-	Size
		Chkd	07.12.2012	wvr001 Wroblewski	Design Group	9725	Page
		Appd	10.12.2012	bha009 Haag	Material ID	PAAD103091	2/2
				Drawing ID	DAAD032420		Rev.
						A	

WinGD-X72/-B/DF - STARTING AIR SYSTEM

TRACK CHANGES

DATE	SUBJECT	DESCRIPTION
2016-10-16	DRAWING SET	First web upload
2018-09-12	DAAD032420	System Drawing – new revision

DISCLAIMER

© Copyright by Winterthur Gas & Diesel Ltd.

All rights reserved. No part of this document may be reproduced or copied in any form or by any means (electronic, mechanical, graphic, photocopying, recording, taping or other information retrieval systems) without the prior written permission of the copyright owner.

THIS PUBLICATION IS DESIGNED TO PROVIDE AN ACCURATE AND AUTHORITATIVE INFORMATION WITH REGARD TO THE SUBJECT-MATTER COVERED AS WAS AVAILABLE AT THE TIME OF PRINTING. HOWEVER, THE PUBLICATION DEALS WITH COMPLICATED TECHNICAL MATTERS SUITED ONLY FOR SPECIALISTS IN THE AREA, AND THE DESIGN OF THE SUBJECT-PRODUCTS IS SUBJECT TO REGULAR IMPROVEMENTS, MODIFICATIONS AND CHANGES. CONSEQUENTLY, THE PUBLISHER AND COPYRIGHT OWNER OF THIS PUBLICATION CAN NOT ACCEPT ANY RESPONSIBILITY OR LIABILITY FOR ANY EVENTUAL ERRORS OR OMISSIONS IN THIS BOOKLET OR FOR DISCREPANCIES ARISING FROM THE FEATURES OF ANY ACTUAL ITEM IN THE RESPECTIVE PRODUCT BEING DIFFERENT FROM THOSE SHOWN IN THIS PUBLICATION. THE PUBLISHER AND COPYRIGHT OWNER SHALL UNDER NO CIRCUMSTANCES BE HELD LIABLE FOR ANY FINANCIAL CONSEQUENTIAL DAMAGES OR OTHER LOSS, OR ANY OTHER DAMAGE OR INJURY, SUFFERED BY ANY PARTY MAKING USE OF THIS PUBLICATION OR THE INFORMATION CONTAINED HEREIN.