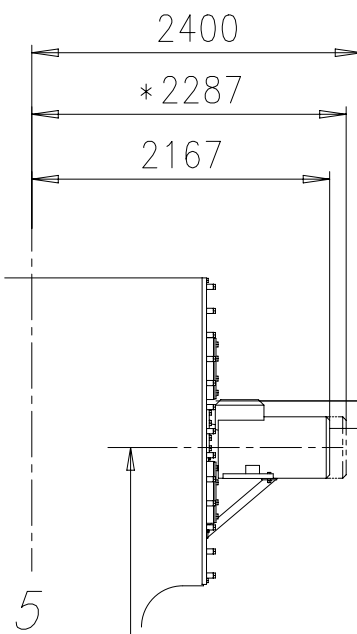
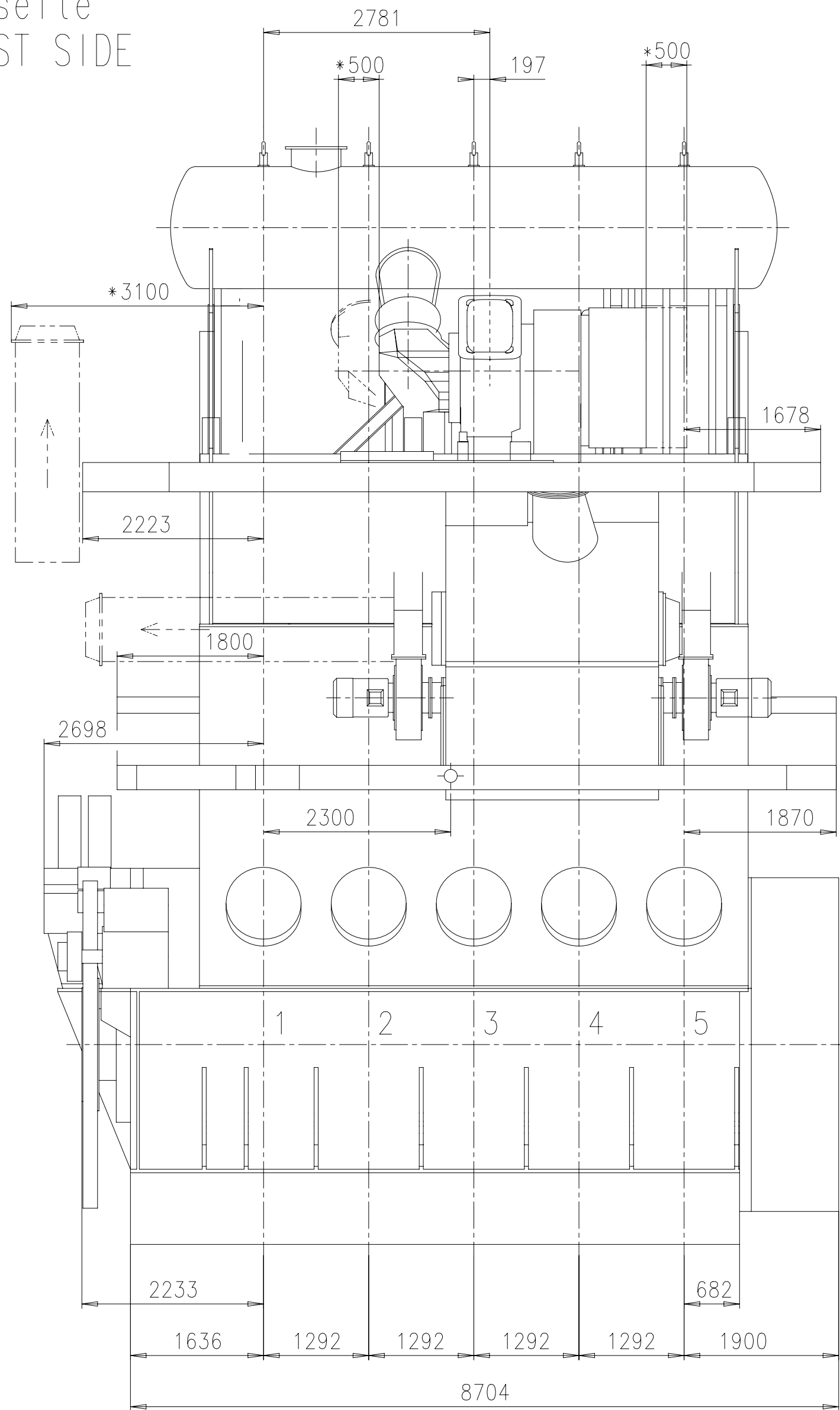


Download
"DXF file"

Abgasseite
EXHAUST SIDE

Nur bei Ausfuehrung mit Elba
ONLY FOR DESIGN WITH ELBA

Antriebsseite
DRIVING END

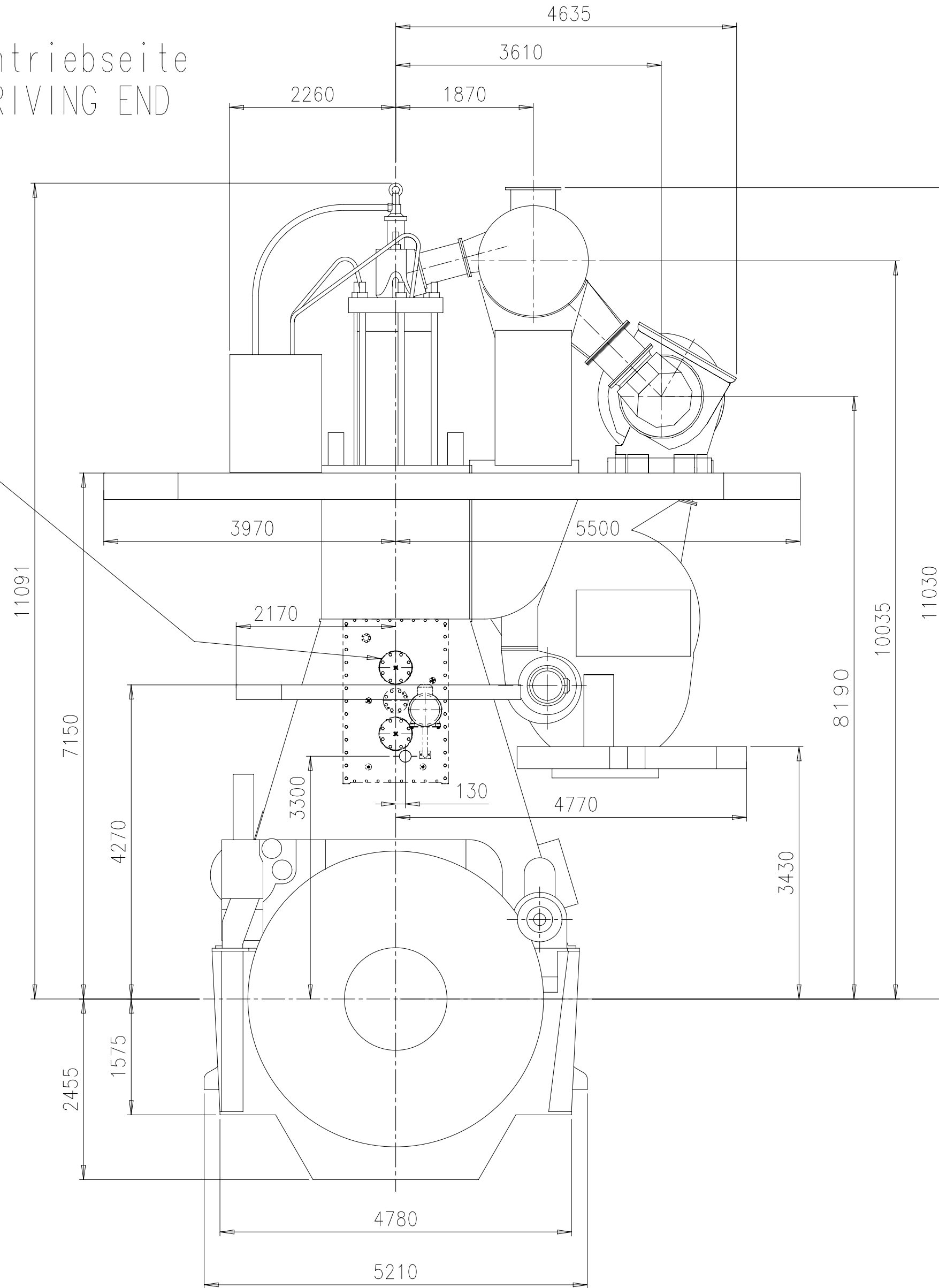


bis Mitte Kurbelwelle
3931 TO CENTRE OF CRANKSHAFT

Freies Ende
FREE END

Antriebsseite
DRIVING END

Nur bei Ausfuehrung mit Elba
ONLY FOR DESIGN WITH ELBA



TOOLS FOR PISTON
AND CYL. COVER
DISMANTLING

RECOMMENDED AREA TO
BE COVERED BY THE
ENGINE ROOM CRANE

SPARES

PLATFORM
OUTLINE

MINIMUM AREA TO
BE COVERED BY THE
ENGINE ROOM CRANE.

Nur bei Ausfuehrung mit Elba
ONLY FOR DESIGN WITH ELBA

FOR OVERHAUL OF TC
SEE MANUAL OF TC BUILDER

Gewicht ohne Wasser und Öl= 481 t
WEIGHT WITHOUT WATER AND OIL

* Platz fuer Demontage
SPACE FOR REMOVAL

ca. Schwerpunkt
APPROX. CENTRE OF GRAVITY

gezeichnet fuer A275-L
DRAWN FOR A275-L

TURBOCHARGER A275-L
TURBOCHARGER A175-L

1	001	PAAD082970	DISMANTLING DIMENSIONS		DAAD027096		0,001
QTY	SEQ NO	Material ID	Material Name	Dimension, Occ	Standard or Drawing	Basic Material Material Standard	Weight GR/NET
Free space for file						Q-Code XXXXXX Standard ISO; JIS	Main Drw. H
Modif.	A	EAAD090455	12.03.2019				
Number		Drawn date	Number	Drawn date	Number	Drawn date	Number
Product 5X72		ENGINE OUTLINE VIEW Motoransichten					
Units	mm kg	NX	Basic Material	Scale	Size	Page	Material ID
Made	02.08.2018	Marc Brühwiler	Scale 1:55	Size A1	Page 1/1	Material ID	PAAD303724
Chkd	03.08.2018	ih003 Herceg	Design Group	0812	DAAD104488	Rev.	A
Appd	03.08.2018	r1002 Flegans	GENERAL TOLERANCES ACCORDING TO ISO2768-mK				

DIMENSIONS ONLY FOR REFERENCE
THIS OUTLINE DRAWING CAN NOT BE USED FOR FINAL DESIGN.
PLEASE TAKE CORRESPONDING DESIGN GROUP

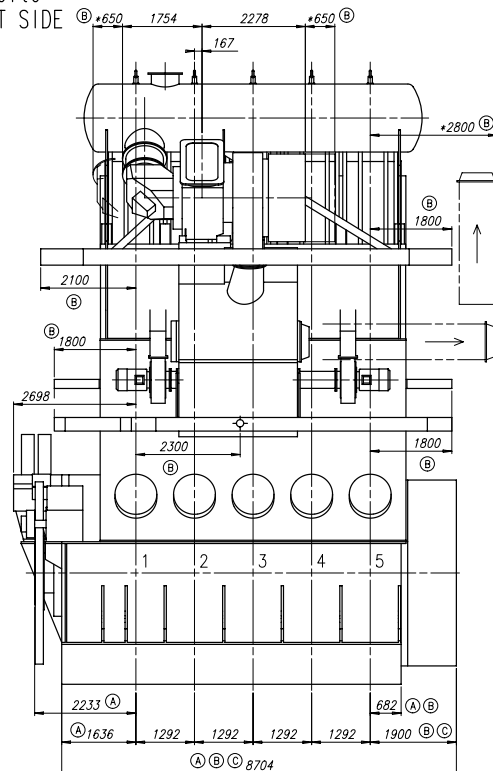
SURFACE PROTECTION SEE GROUP 0344
TOLERANCING PRINCIPLE ISO8015
GENERAL TOLERANCES ACCORDING TO ISO2768-mK

Units mm kg NX
Made 02.08.2018 Marc Brühwiler
Chkd 03.08.2018 ih003 Herceg
Appd 03.08.2018 r1002 Flegans

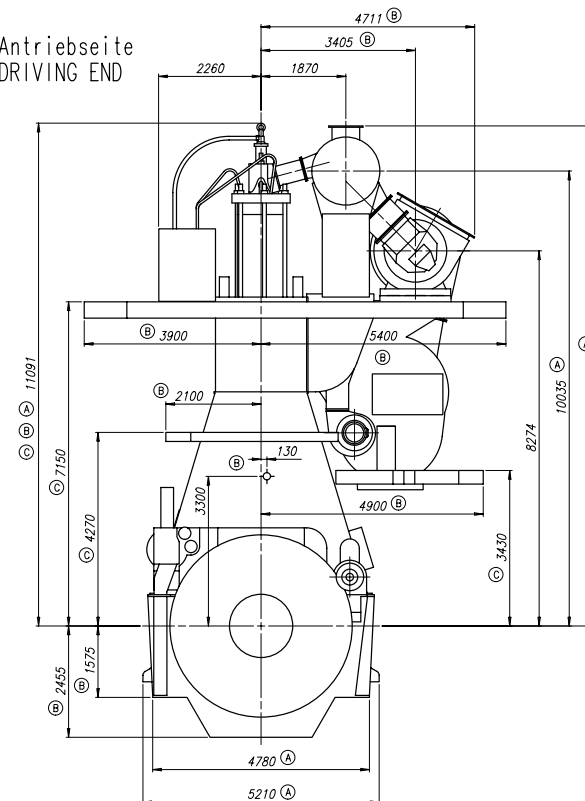
Basic Material
Scale 1:55
Size A1
Page 1/1
Material ID
PAAD303724
Rev. A

Download
"DXF file"

Abgasseite
EXHAUST SIDE



Antriebsseite
DRIVING END

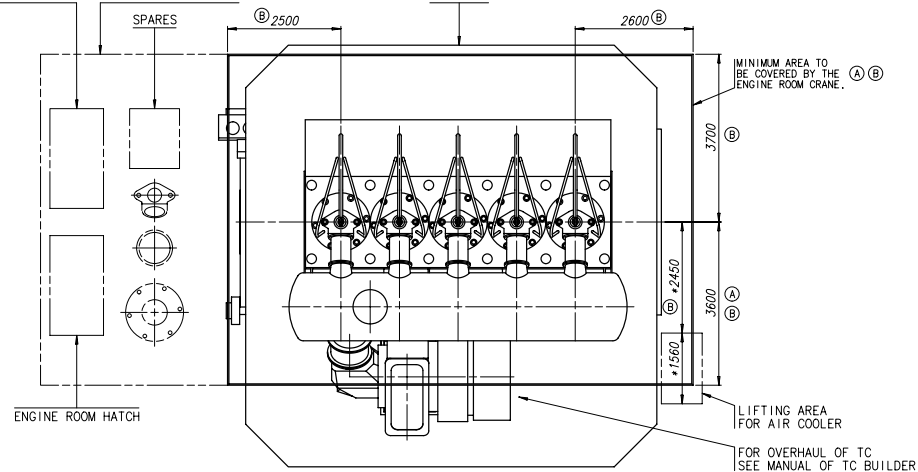


TOOLS FOR PISTON AND CYL. COVER DISMANTLING

RECOMMENDED AREA TO
BE COVERED BY THE
ENGINE ROOM CRANE

PLATFORM OUTLINE

SPARES




Gewicht ohne Wasser und Oel= 481 t
WEIGHT WITHOUT WATER AND OIL

* Platz fuer Demontage
SPACE FOR REMOVAL

ca. Schwerpunkt
APPROX. CENTRE OF GRAVITY

TURBOCHARGER A185-L ®

1	001	PAAD082970	DISMANTLING DIMENSIONS		DAAD027096	0.00	
QTY	SEQ NO	Material ID	Material Name	Dimension/Qty/Dimension	Standard or Drawing	Basic Material Material Standard	Material Drawing
<div style="writing-mode: vertical-rl; transform: rotate(180deg);"> Please use this drawing for the following items: </div>						Q-Code	XXXXXX
						Standard	ISO
							JIS
							H
Matl.	A EAAD084216 23.10.2012		B EAAD084357 19.12.2012		C EAAD084419 21.01.2013		D EAAD085139 26.03.2013
	Number	Drawn date	Number	Drawn date	Number	Drawn date	Number
			Product WSX72				
			ENGINE OUTLINE VIEW A185 Motoransichten A185				
Units	mm kg		Basic Material				Net Weight 0.201
Make	17.04.2012		esc001 C. Schmutz		Scale	1:55	
Check	20.04.2012		pne001 Heracher		Design Group	A1	Page 1/1
Appr	30.01.2013		pna029 Haa		Design ID	0812	DAAD027085
							Rev. D

Download
"DXF file"

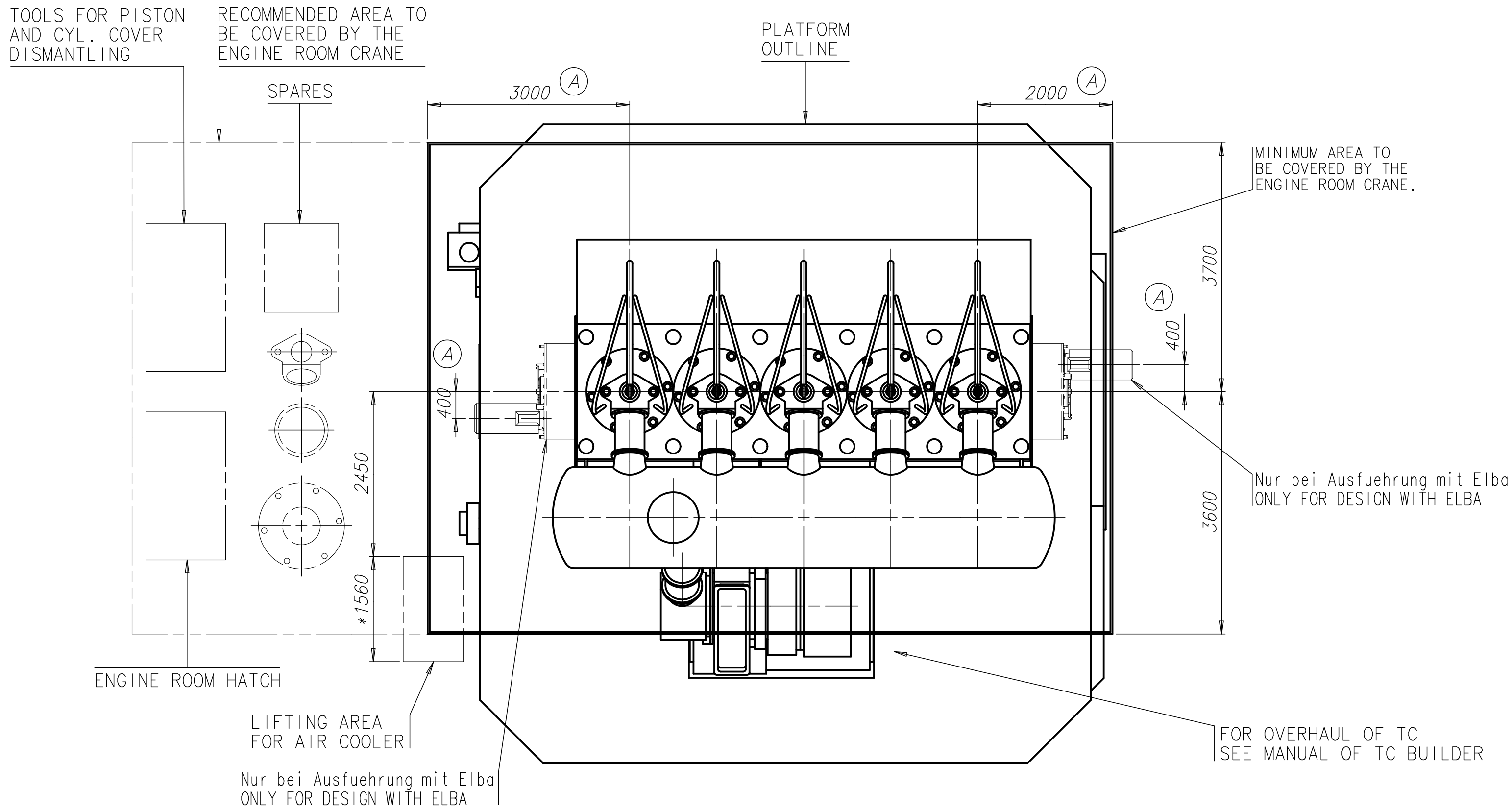
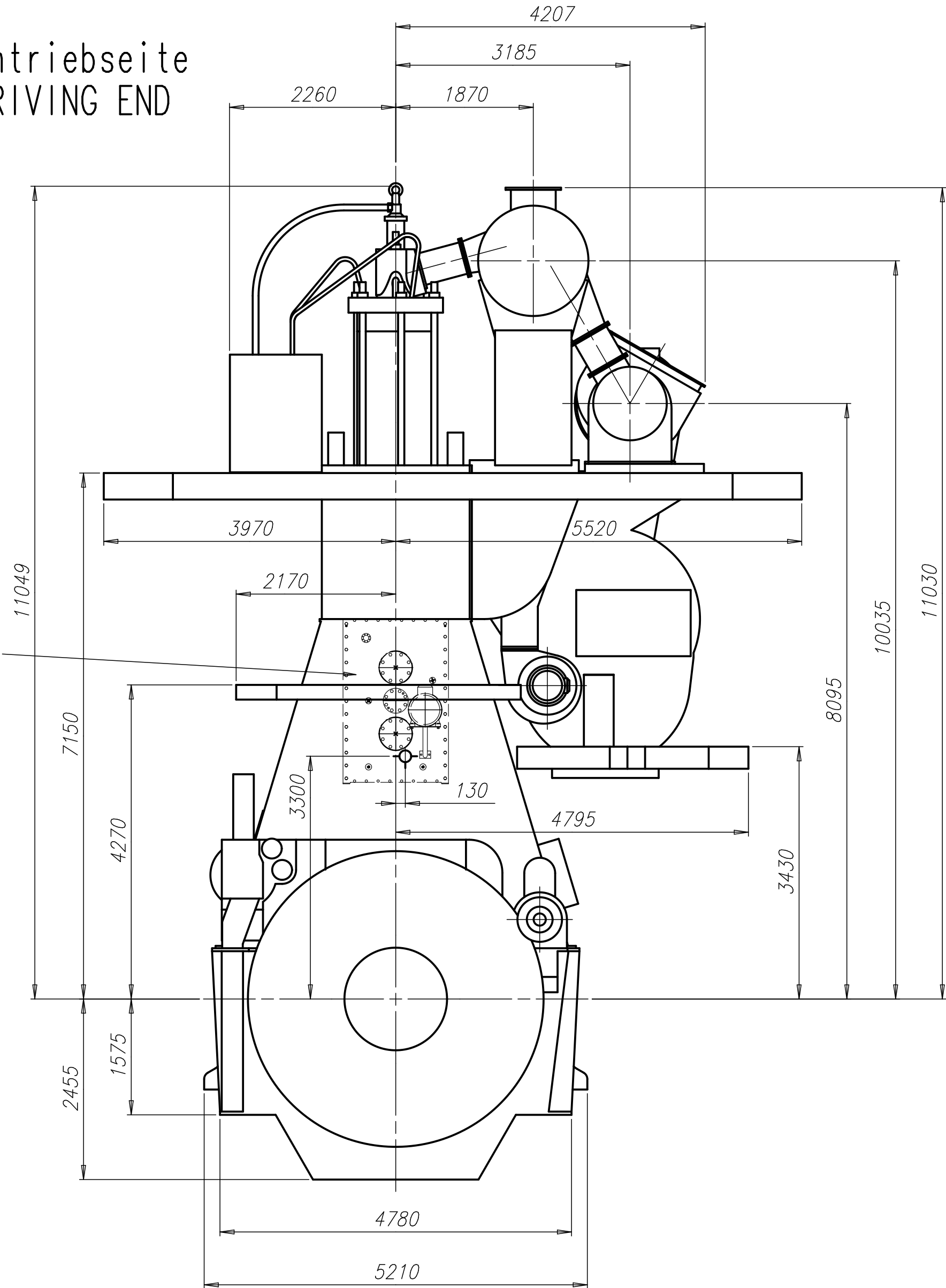
Abgasseite
EXHAUST SIDE



bis Mitte Kurbelwelle
C3931 TO CENTRE OF CRANKSHAFT

Ⓐ Nur bei Ausführung mit Elba
ONLY FOR DESIGN WITH ELBA

Antriebseite
DRIVING END


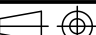


Gewicht ohne Wasser und Oel= 481 t
WEIGHT WITHOUT WATER AND OIL

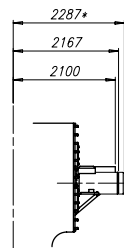
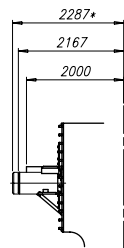
* Platz fuer Demontage
SPACE FOR REMOVAL

ca. Schwerpunkt
APPROX. CENTRE OF GRAVITY

TURBOCHARGER MET60MB

1	001	PAAD082970	DISMANTLING DIMENSIONS				DAAD027096				0.001
QTY	SEQ NO	Material ID	Material Name		Dimension/Occ.Dimension		Standard or Drawing		Basic Material Material Standard		Weight GR./NET
Modif. Free space for ILG									O-Code	XXXXXX	Main Drw. H
									Standard	ISO JIS	
EA	AMAD085677	15.01.2015									
	Number	Drawn date	Number	Drawn date	Number	Drawn date	Number	Drawn date	Number	Drawn date	
 WÄRTSILÄ			Product WSX72			ENGINE OUTLINE VIEW MET60MB Motoransichten MET60MB					
Units	mm kg	IDE			Basic Material				Net Weight 0.001		
Made	19.02.2014	csc001 C.Schultz			Scale	1:55	Size	A1	Page	1/1	
Chkd	20.02.2014	pne001 Neracher			Design Group		Material ID	PAAD156369			
Appd	20.02.2014	bfr005 Frei			0812		Drawing ID		DAAD048758		
										Rev.	A

Abgasseite
EXHAUST SIDE

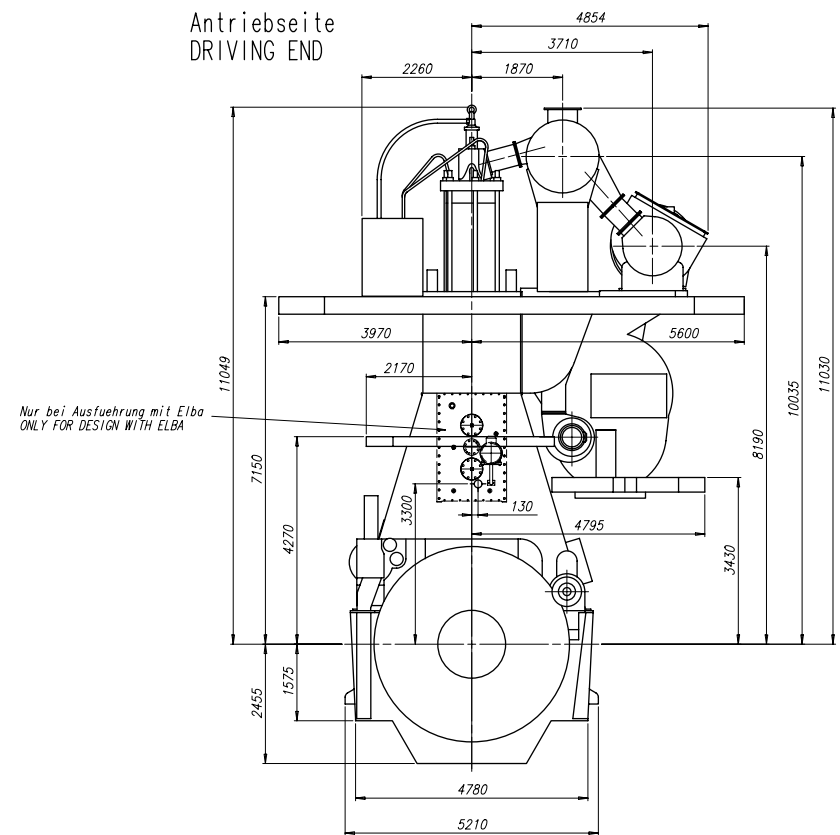


bis Mitte Kurbelwelle
3031 TO CENTRE OF CRANKSHAFT


Nur bei Ausfuehrung mit Elba
ONLY FOR DESIGN WITH ELBA



FOR OVERHAUL OF TC
SEE MANUAL OF TC BUILDER

Antriebsseite
DRIVING END

Nur bei Ausführung mit Elba
ONLY FOR DESIGN WITH ELBA

1	001	PAAD082970	DISMANTLING DIMENSIONS			DAAD027096			0.001	
QTY	ISO No	Material ID	Material Name	Dimension/Occ. Dimension	Standard or Drawing	Basic Material Material Standard	G-code	Notes	GR./NET	
							XXXXXX	Draw.		
							Standard	JIS	H	
Material	Number	Draw date	Number	Draw date	Number	Draw date	Number	Draw date		
 WIN GO Wasserberg Gas & Diesel			Product WSX72							
			ENGINE OUTLINE VIEW							
			Motoransichten							
Units	mm	kg	IDE		Basic Material		Net Weight			
Make	21.12.2015		rsq04 R.W.Sala		Scale	1:54		Size	A1	
Order	23.12.2015		cku010 Kubler		Design Group	0812		Material ID	PAAD216110	
Chk	23.12.2015		bhad09 Haag		Order ID	DAAD047177		Rev.	-	

WinGD-5X72_Engine-outline-views

TRACK CHANGES

DATE	SUBJECT	DESCRIPTION
2018-02-26	DRAWING SET	First web upload
2018-09-20	DAAD104488	Engine Outline Views for Turbocharger type 1xA175-L/A275-L has been added.
2019-05-15	DAAD104488	Revised Engine Outline Views for Turbocharger type 1xA175-L/A275-L has been added.
2020-07-17	DAAD027096	Revised Dismantling Dimensions drawing has been updated.

DISCLAIMER

© Copyright by Winterthur Gas & Diesel Ltd.

All rights reserved. No part of this document may be reproduced or copied in any form or by any means (electronic, mechanical, graphic, photocopying, recording, taping or other information retrieval systems) without the prior written permission of the copyright owner.

THIS PUBLICATION IS DESIGNED TO PROVIDE AN ACCURATE AND AUTHORITATIVE INFORMATION WITH REGARD TO THE SUBJECT-MATTER COVERED AS WAS AVAILABLE AT THE TIME OF PRINTING. HOWEVER, THE PUBLICATION DEALS WITH COMPLICATED TECHNICAL MATTERS SUITED ONLY FOR SPECIALISTS IN THE AREA, AND THE DESIGN OF THE SUBJECT-PRODUCTS IS SUBJECT TO REGULAR IMPROVEMENTS, MODIFICATIONS AND CHANGES. CONSEQUENTLY, THE PUBLISHER AND COPYRIGHT OWNER OF THIS PUBLICATION CAN NOT ACCEPT ANY RESPONSIBILITY OR LIABILITY FOR ANY EVENTUAL ERRORS OR OMISSIONS IN THIS BOOKLET OR FOR DISCREPANCIES ARISING FROM THE FEATURES OF ANY ACTUAL ITEM IN THE RESPECTIVE PRODUCT BEING DIFFERENT FROM THOSE SHOWN IN THIS PUBLICATION. THE PUBLISHER AND COPYRIGHT OWNER SHALL UNDER NO CIRCUMSTANCES BE HELD LIABLE FOR ANY FINANCIAL CONSEQUENTIAL DAMAGES OR OTHER LOSS, OR ANY OTHER DAMAGE OR INJURY, SUFFERED BY ANY PARTY MAKING USE OF THIS PUBLICATION OR THE INFORMATION CONTAINED HEREIN.