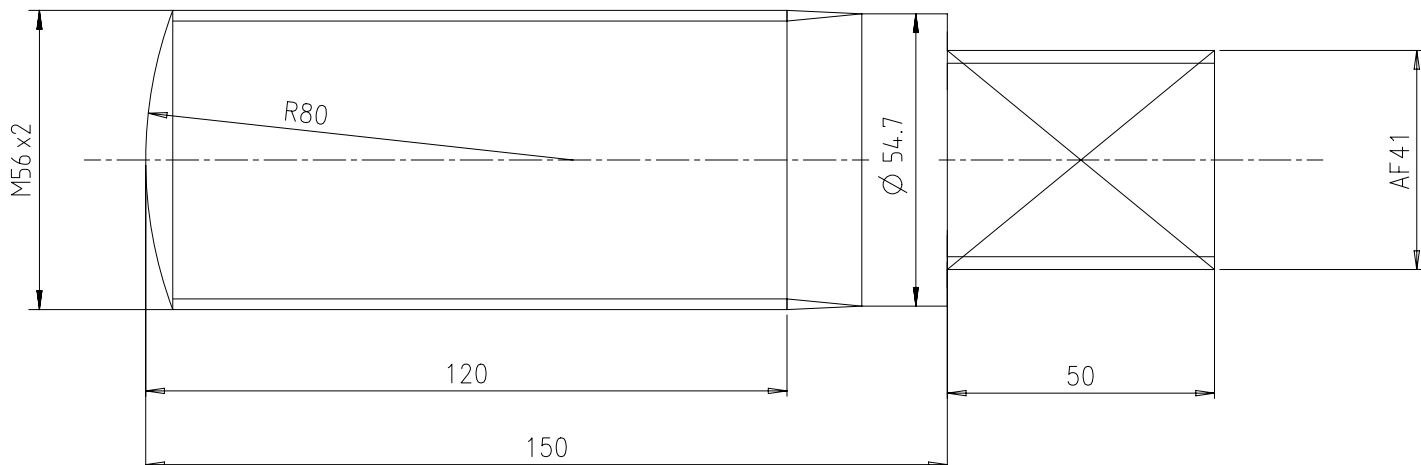
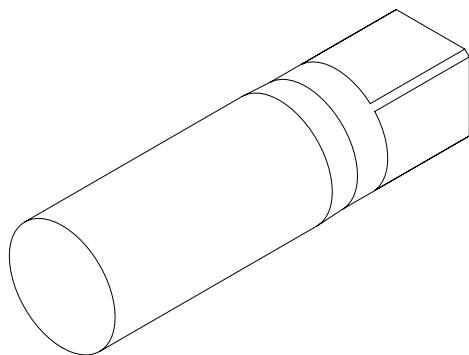


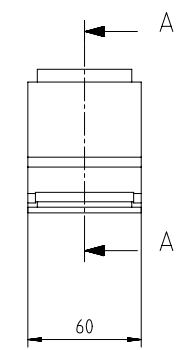
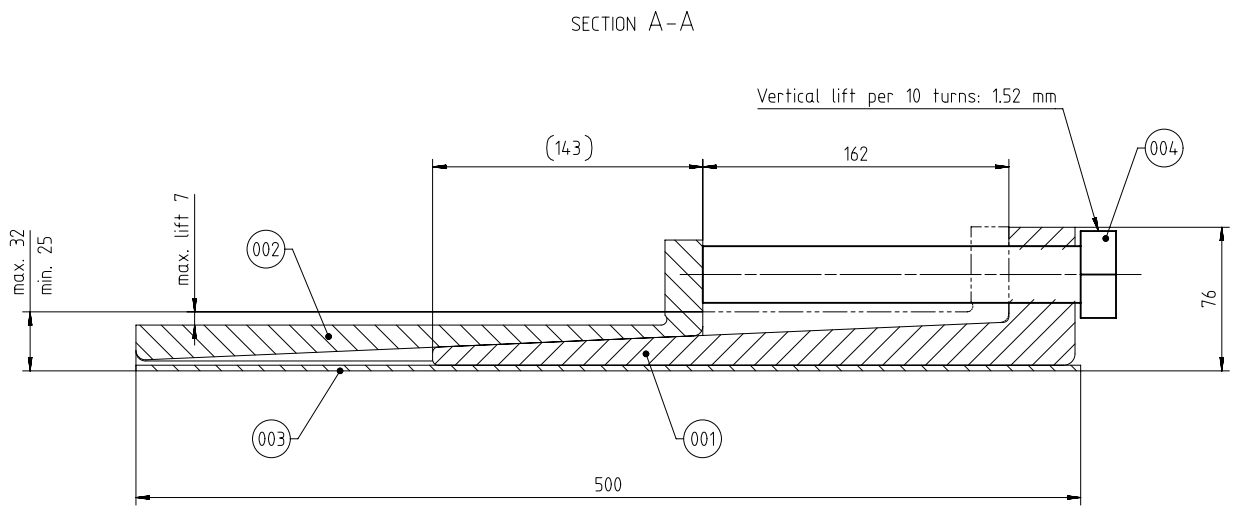
ROLLED THREAD


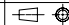


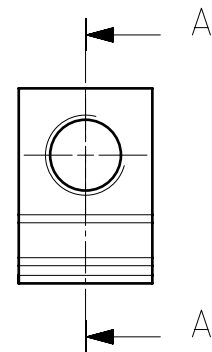
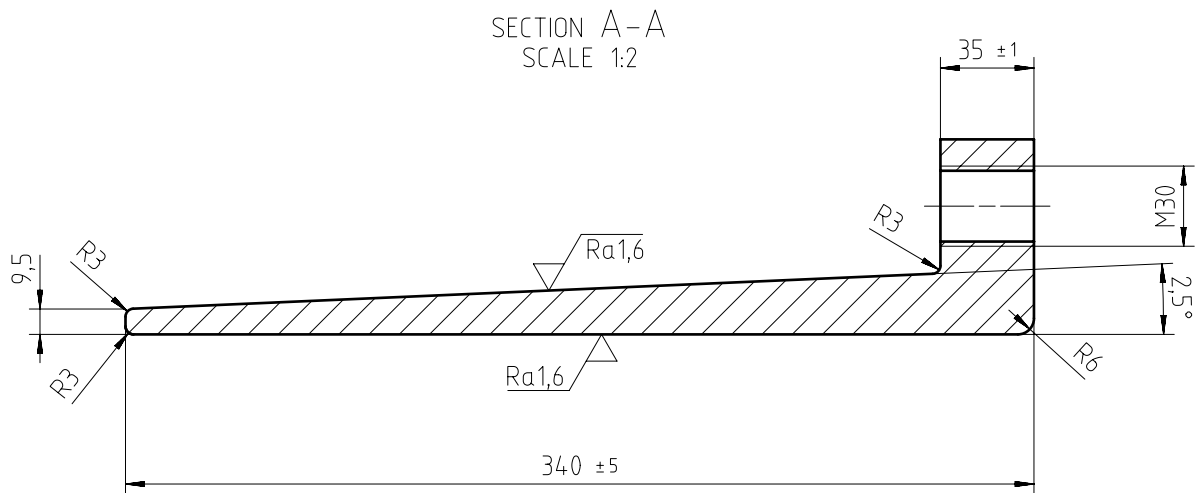
M 1:2



Free space for lic.								Q-Code XXXXXX	Main Drw.					
								Standard ISO; JIS						
Modif.	A	EAAD084385	07.04.2015	B	EAAD095725	18.01.2021								
		Number	Drawn date		Number	Drawn date		Number	Drawn date					
<b>WIN GD</b> Winterthur Gas & Diesel		Product W-2S		JACKING SCREW Abdrueckschraube										
Units	mm kg	NX				Basic Material		W-FU-235-N-T		Net Weight 3,75				
SURFACE PROTECTION SEE GROUP 0344		Made	22.10.2012	asex06 A.Sekulic		Scale	1:2	Size	A3	Page	1/1	Material	PAAD103276	
TOLERANCING PRINCIPLE ISO8015		Chkd	15.11.2012	mhu019 Hug		Design Group		9710		Drawing ID		DAAD032454	Rev.	B
GENERAL TOLERANCES ACCORDING TO ISO2768-mK		Appd	29.11.2012	wwr001 Wroblewski										



1	004	015.151.048.701	HEXAGON HEAD SCREW M30x200		ISO 4017	8.8	1,21								
1	003	107.245.898.001	PLATE		107.245.898	W-FU-235-JR	1,0								
1	002	107.246.894.001	KEY		107.246.894	W-FU-235-JR	3,0								
1	001	107.246.895.001	KEY		107.246.895	W-FU-235-JR	3,3								
QTY	SEQ NO	Material ID	Material Name		Dimension, Occ	Standard or Drawing	Basic Material Material Standard	Weight GR./NET							
Free space for lic.						Q-Code XXXXXX	Main Drw.								
						Standard ISO; JIS									
Modif.	B	EAAD014493	05.02.2002	C	7-73.552	19.10.2009	D	EAAD084635	27.06.2013	E	EAAD091472	11.11.2019			
	Number	Drawn date	Number	Drawn date	Number	Drawn date	Number	Drawn date	Number	Drawn date	Number	Drawn date			
 Winterthur Gas & Diesel			Product W-25			WEDGE  Schraeger Keil									
Units	mm kg	NX				Basic Material					Net Weight 8,51				
Made	10.07.1996		D.Scheffler			Scale	1:2		Size	A2	Page	1/1	Material ID	107.245.895.200	
Chkd						Design Group									
Appd	30.08.1996		WCH001 Service User			9710-01		Drawing ID		107.245.895			Rev.	E	



$\sqrt{Ra50}$  (  $\sqrt{Ra1,6}$  )

Free space for lic.								Q-Code XXXXX	Main Drw.						
								Standard ISO; JIS							
Modif.	A	7-73.552	19.10.2009	B	EAAD091472	04.11.2019									
		Number	Drawn date		Number	Drawn date		Number	Drawn date						
<b>WIN GD</b> Winterthur Gas & Diesel			Product W-2S			KEY  Keil									
Units	mm kg	NX				Basic Material W-FU-235-JR			Net Weight 3,3						
SURFACE PROTECTION SEE GROUP 0344			Made	16.05.2001 D.ADMINISTRATOR			Scale	1:2	Size	A3	Page	1/1	Material ID	107.246.895.001	
TOLERANCING PRINCIPLE ISO8015			Chkd				Design Group	9710-01			Drawing ID	107.246.895		Rev.	B
GENERAL TOLERANCES ACCORDING TO ISO2768-mK			Appd	27.12.2001 WDMS2											

SECTION A-A  
SCALE 1:2

(280)

 $20 \pm 1$  $60 \pm 1$ 


A

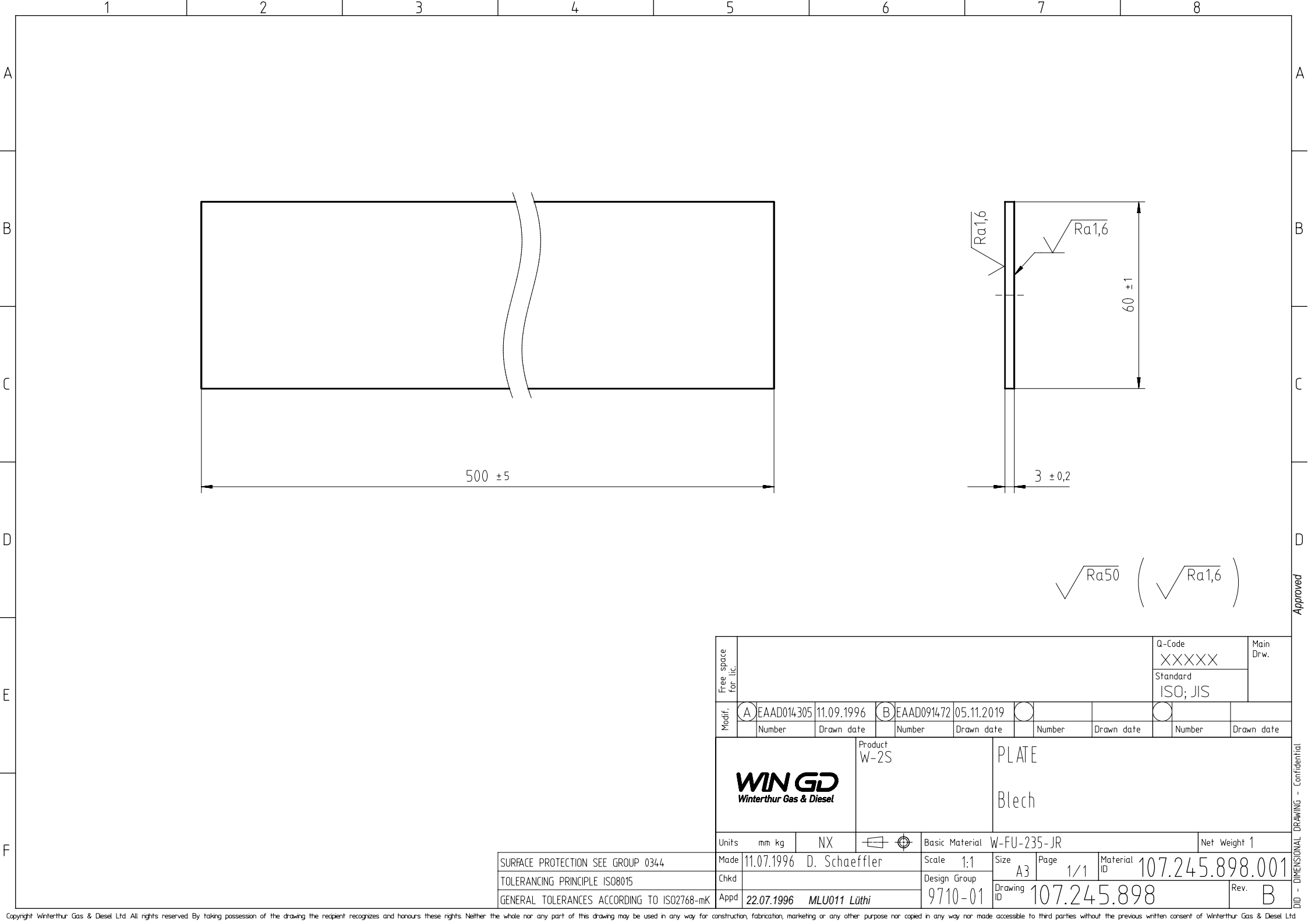
6/ +1

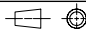
A

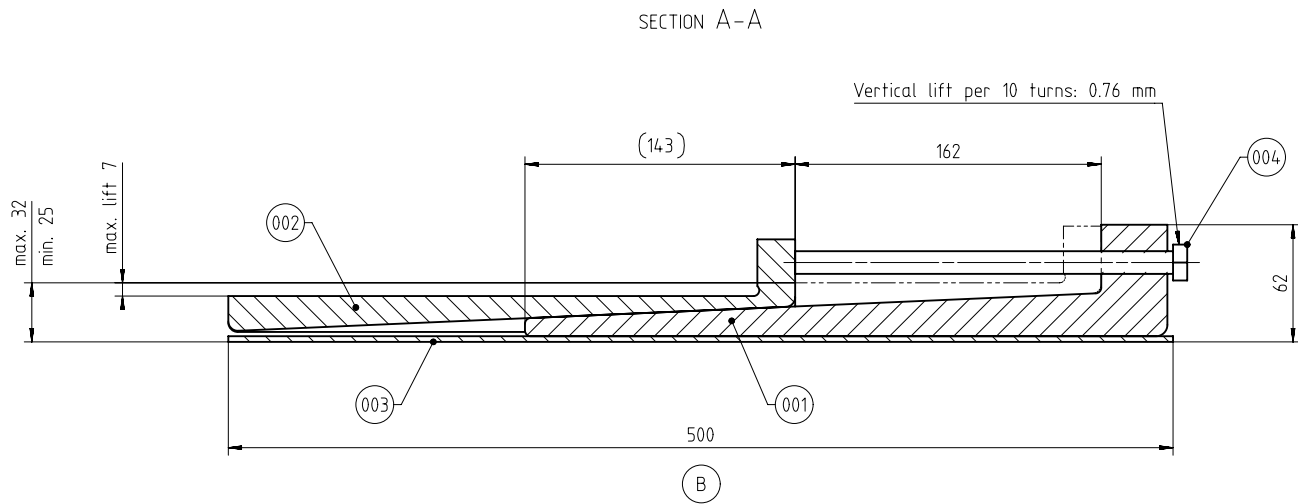
52 ± 0,5


$\sqrt{\text{Ra50}} \quad \left( \quad \sqrt{\text{Ra1,6}} \right)$

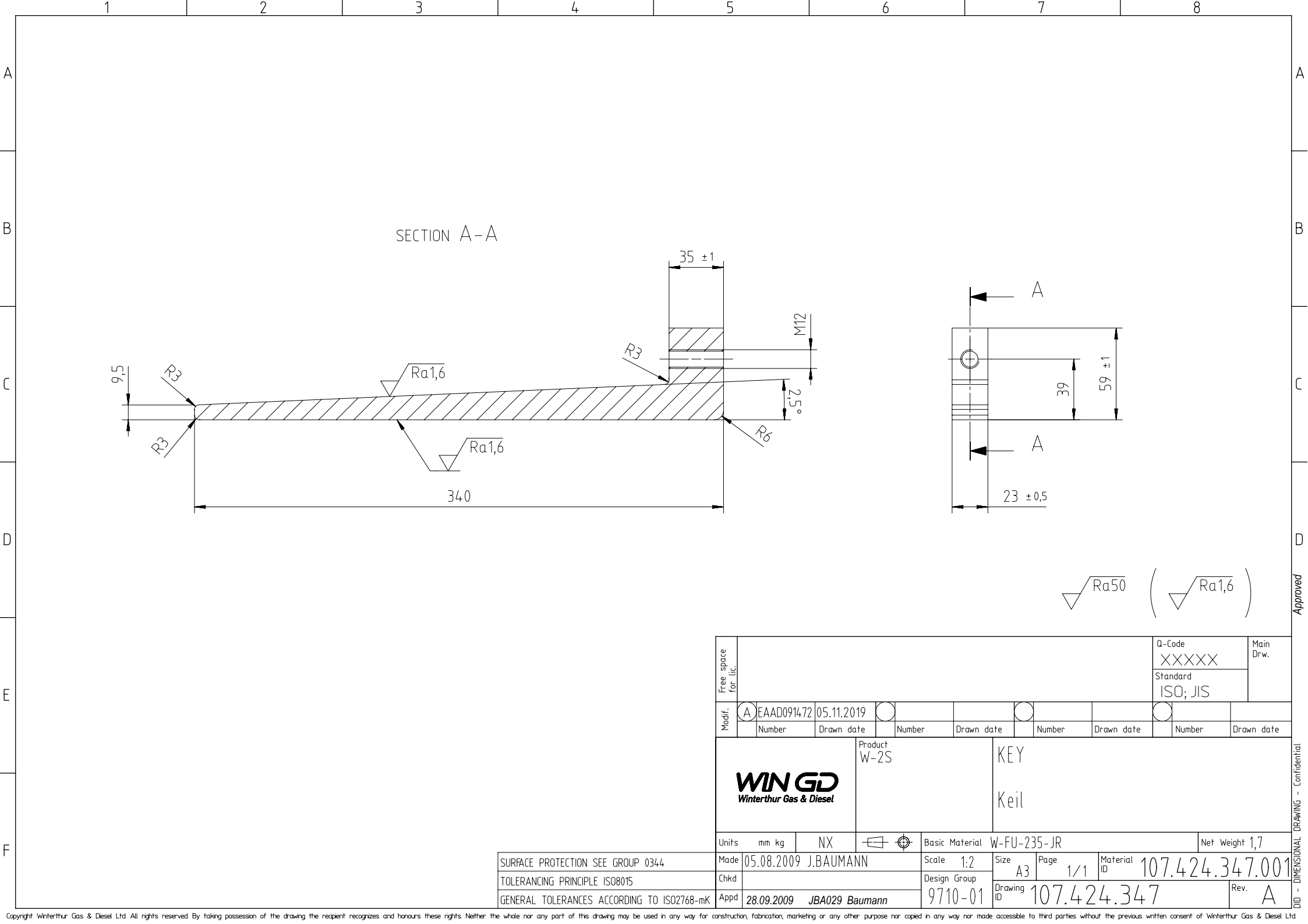
Free space for lic.								Q-Code XXXXXX		Main Drw.		
								Standard ISO; JIS				
Modif.	A	7-73552	19.10.2009	B	EAAD091472	05.11.2019						
		Number	Drawn date		Number	Drawn date		Number	Drawn date			
<div>WIN GD</div> <div>Winterthur Gas &amp; Diesel</div>			Product W-2S			KEY  Keil						
Units	mm kg	NX		Basic Material W-FU-235-JR					Net Weight 3			
Made	16.05.2001 D.ADMINISTRATOR			Scale	1:2		Size	A3	Page	1/1	Material	107.246.894.001
Chkd				Design Group								
Appd	27.12.2001 WDMS2			9710-01		Drawing ID	107.246.894				Rev.	B



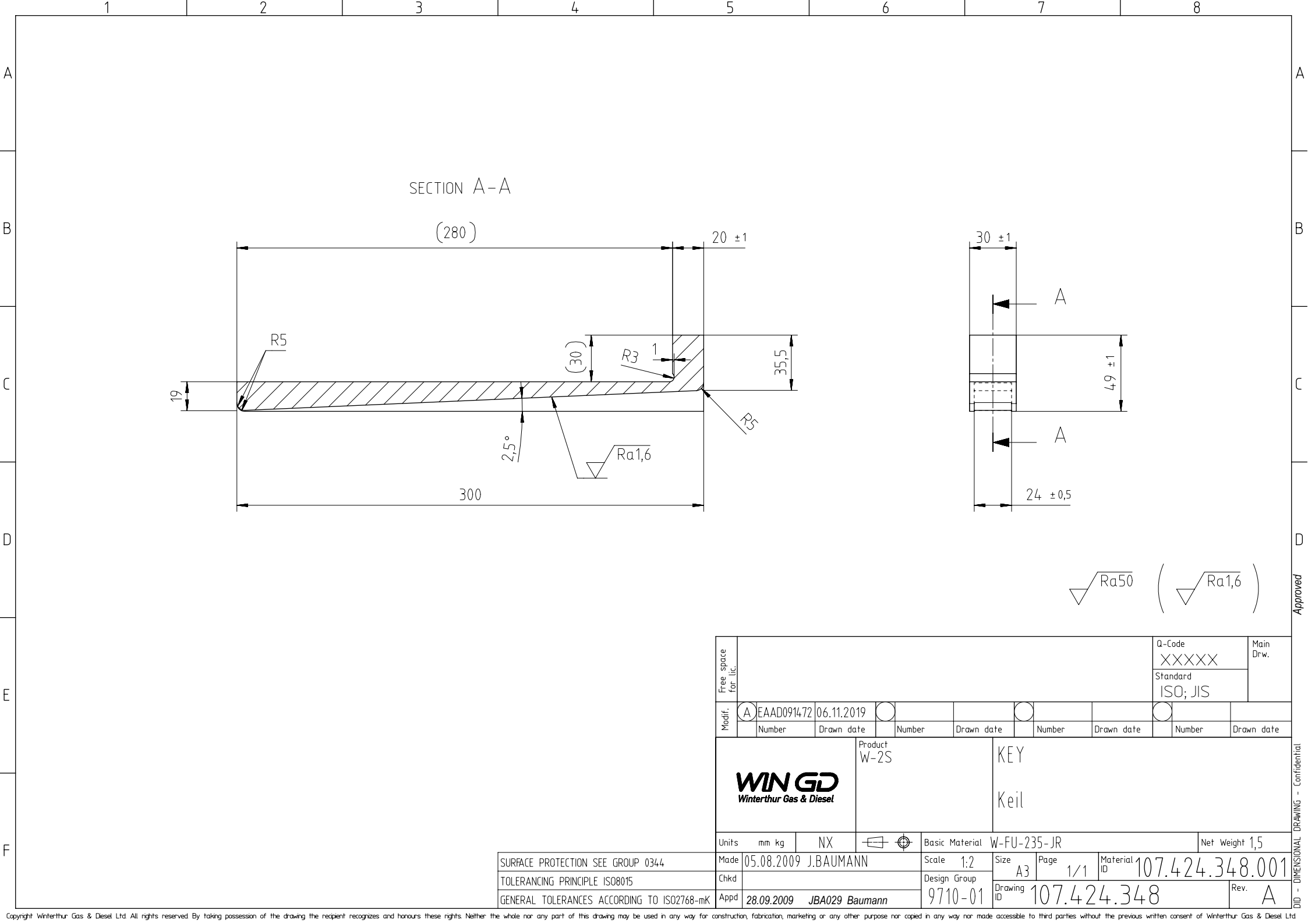
Free space for lic.								Q-Code	Main Drw.				
								XXXXXX					
								Standard ISO; JIS					
Modif.	A	EAAD014305	11.09.1996	B	EAAD091472	05.11.2019							
	Number		Drawn date		Number		Drawn date		Number		Drawn date		
			Product W-2S			PLATE  Blech							
WIN GD Winterthur Gas & Diesel													
Units	mm kg		NX				Basic Material		W-FU-235-JR			Net Weight 1	
Made	11.07.1996 D. Schaeffler				Scale 1:1		Size A3	Page 1/1	Material ID	107.245.898.001			
Chkd					Design Group		Drawing ID	107.245.898				Rev. B	
Appd	22.07.1996 MLU011 Lüthi				9710-01								



1	004	015.151.040.701	HEXAGON HEAD SCREW M12x200		ISO 4017	8.8	0,156				
1	003	PAAD34.3262	PLATE		DAAD1234.06	W-FU-235-JR	0,4				
1	002	107.424.348.001	KEY		107.424.348	W-FU-235-JR	1,5				
1	001	107.424.347.001	KEY		107.424.347	W-FU-235-JR	1,7				
QTY	SEQ NO	Material ID	Material Name		Dimension, Occ	Standard or Drawing	Basic Material Material Standard	Weight GR./NET			
Free space for lic.							Q-Code XXXXXX	Main Drw.			
							Standard ISO; JIS				
Modif.	A	EAAD084635	27.06.2013	B	EAAD091472	06.11.2019					
	Number		Drawn date		Number	Drawn date		Number	Drawn date		
Product W-25			WEDGE  Schraeger Keil								
Units		mm kg	NX				Basic Material		W-FU-235-JR	Net Weight 3.8	
Made	05.08.2009	jba029	J.BAUMANN		Scale	1:2		Size	A2	Page	1/1
Chkd					Design Group		Material ID	107.424.346.200			
Appd	28.09.2009	JBA029 Baumann		9710-01		Drawing ID	107.424.346			Rev.	B







SECTION A-A

(280)

20 ± 1

R5

(30)

R3

1

R5

2,5°

Ra1,6

300

35,5

30 ± 1

A

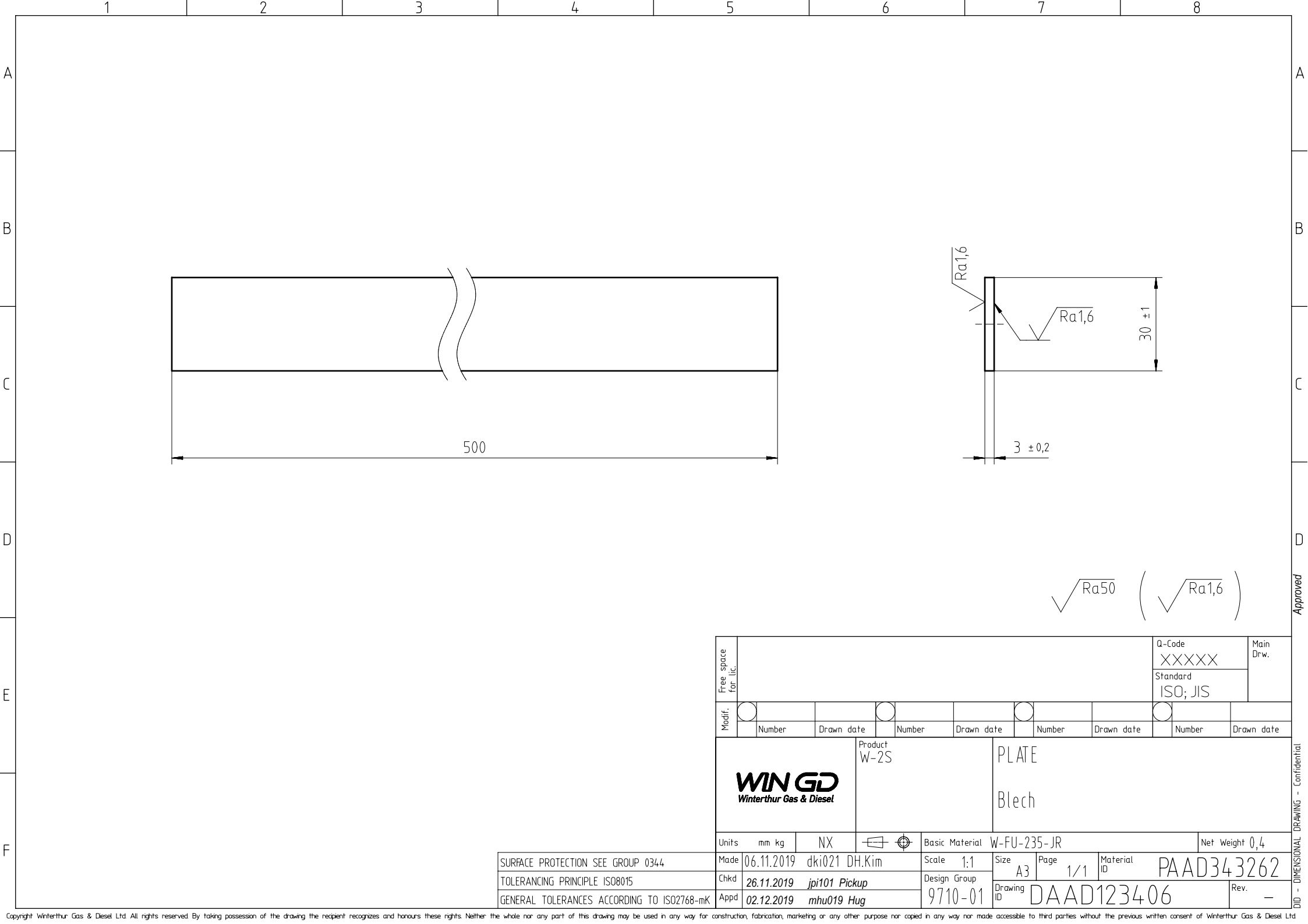
49 ± 1

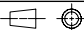
A

24 ± 0,5

Ra50 ( Ra1,6 )

Free space for lic.								Q-Code	Main Drw.	
								XXXXXX		
Modif.	A	EAAD091472	06.11.2019					Standard		
		Number	Drawn date		Number	Drawn date		ISO; JIS		
			Product		KEY					
			W-2S		Keil					
Units		mm kg	NX		Basic Material			W-FU-235-JR		Net Weight 1,5
Made	05.08.2009 J.BAUMANN				Scale	1:2		Size	Page	Material ID 107.424.348.001
Chkd					Design Group	A3 1/1				
Appd	28.09.2009 JBA029 Baumann				9710-01	Drawing ID 107.424.348			Rev.	A



Free space for lic.								Q-Code	Main Drw.			
								XXXXXX				
								Standard ISO; JIS				
Modif.	<input type="radio"/>			<input type="radio"/>		<input type="radio"/>		<input type="radio"/>				
		Number	Drawn date		Number	Drawn date		Number	Drawn date			
<b>WIN GD</b> <i>Winterthur Gas &amp; Diesel</i>			Product W-2S		PLATE  Blech							
Units	mm	kg	NX		Basic Material			W-FU-235-JR	Net Weight 0,4			
Made	06.11.2019	dki021 DH.Kim			Scale	1:1	Size	A3	Page	1/1	Material ID	PAAD343262
Chkd	26.11.2019	jpi101 Pickup			Design Group 9710-01		Drawing ID	DAAD123406			Rev.	-
Appd	02.12.2019	mhu019 Hug										

## MIDS - WinGD X62/-B/DF – Tool Engine Alignment (DG9710-01)

### TRACK CHANGES

DATE	SUBJECT	DESCRIPTION
2016-11-04	DRAWING SET	First web upload
2016-11-25	DAAD083181	Drawing set for 7X62/-B/DF - added
2019-03-28	DAAD113246	Drawing set for 8X62/-B/DF - added
2019-07-17	DAAD032572 DAAD053037 DAAD083181 DAAD113246 DAAD115197 DAAD115317 DAAD115393 DAAD115462	Arrangement drgs – new revisions and new executions for alignment by wedges introduced
2020-09-29	107.245.895 107.246.895 107.246.894 107.245.898 107.424.346 107.424.347 107.424.348	Wedge assembly drgs – new revision
2021-05-20	DAAD032454	Jacking Screw drg – new revision
2023-01-19	PAAD325788 PAAD167768 PAAD325977 PAAD103372 PAAD326134 PAAD242995 PAAD326249 PAAD322052	New main drgs revisions - added

### DISCLAIMER

© Copyright by Winterthur Gas & Diesel Ltd.

All rights reserved. No part of this document may be reproduced or copied in any form or by any means (electronic, mechanical, graphic, photocopying, recording, taping or other information retrieval systems) without the prior written permission of the copyright owner.

THIS PUBLICATION IS DESIGNED TO PROVIDE AN ACCURATE AND AUTHORITATIVE INFORMATION WITH REGARD TO THE SUBJECT-MATTER COVERED AS WAS AVAILABLE AT THE TIME OF PRINTING. HOWEVER, THE PUBLICATION DEALS WITH COMPLICATED TECHNICAL MATTERS SUITED ONLY FOR SPECIALISTS IN THE AREA, AND THE DESIGN OF THE SUBJECT-PRODUCTS IS SUBJECT TO REGULAR IMPROVEMENTS, MODIFICATIONS AND CHANGES. CONSEQUENTLY, THE PUBLISHER AND COPYRIGHT OWNER OF THIS PUBLICATION CAN NOT ACCEPT ANY RESPONSIBILITY OR LIABILITY FOR ANY EVENTUAL ERRORS OR OMISSIONS IN THIS BOOKLET OR FOR DISCREPANCIES ARISING FROM THE FEATURES OF ANY ACTUAL ITEM IN THE RESPECTIVE PRODUCT BEING DIFFERENT FROM THOSE SHOWN IN THIS PUBLICATION. THE PUBLISHER AND COPYRIGHT OWNER SHALL UNDER NO CIRCUMSTANCES BE HELD LIABLE FOR ANY FINANCIAL CONSEQUENTIAL DAMAGES OR OTHER LOSS, OR ANY OTHER DAMAGE OR INJURY, SUFFERED BY ANY PARTY MAKING USE OF THIS PUBLICATION OR THE INFORMATION CONTAINED HEREIN.