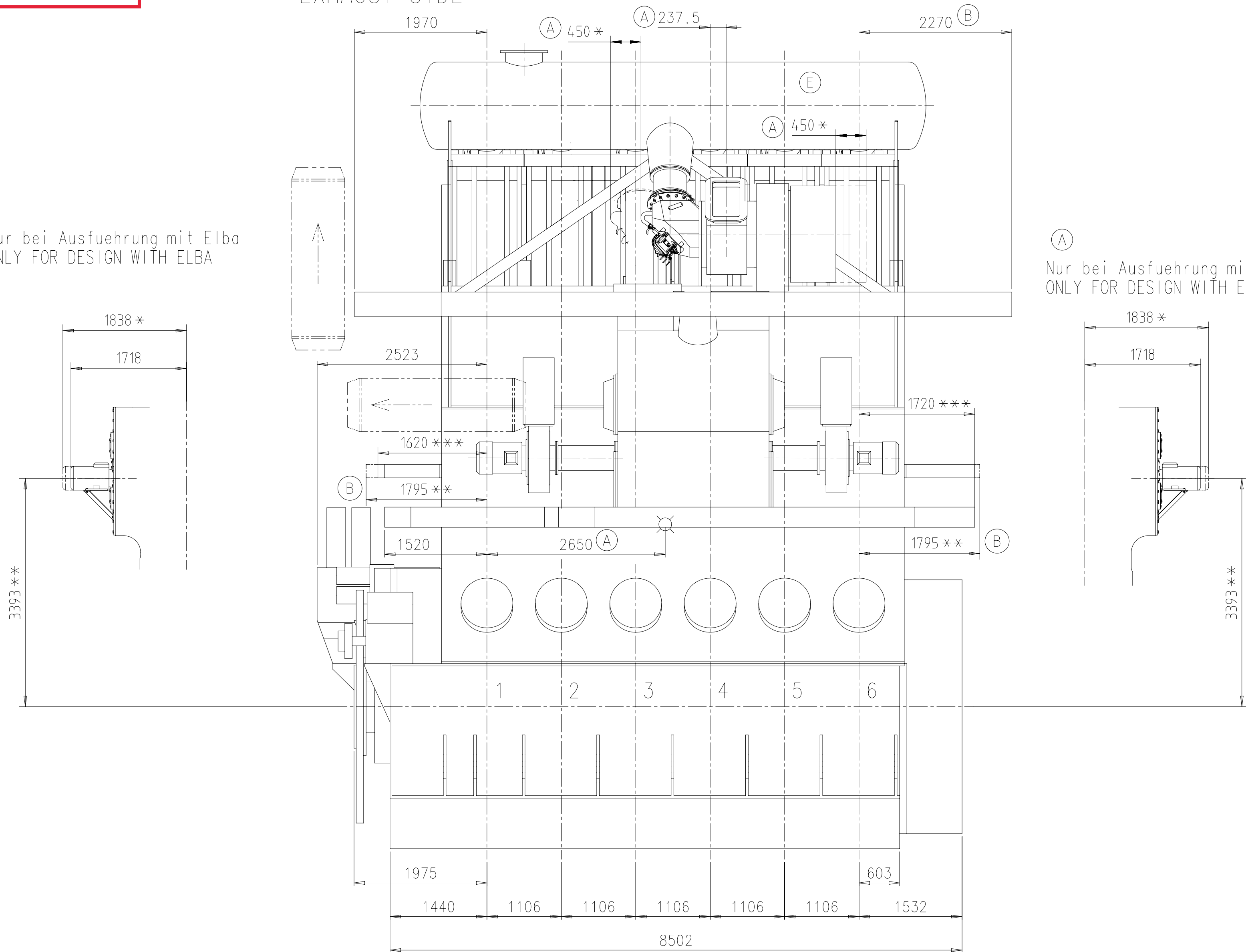


Download  
"DXF file"

Abgasseite  
EXHAUST SIDE

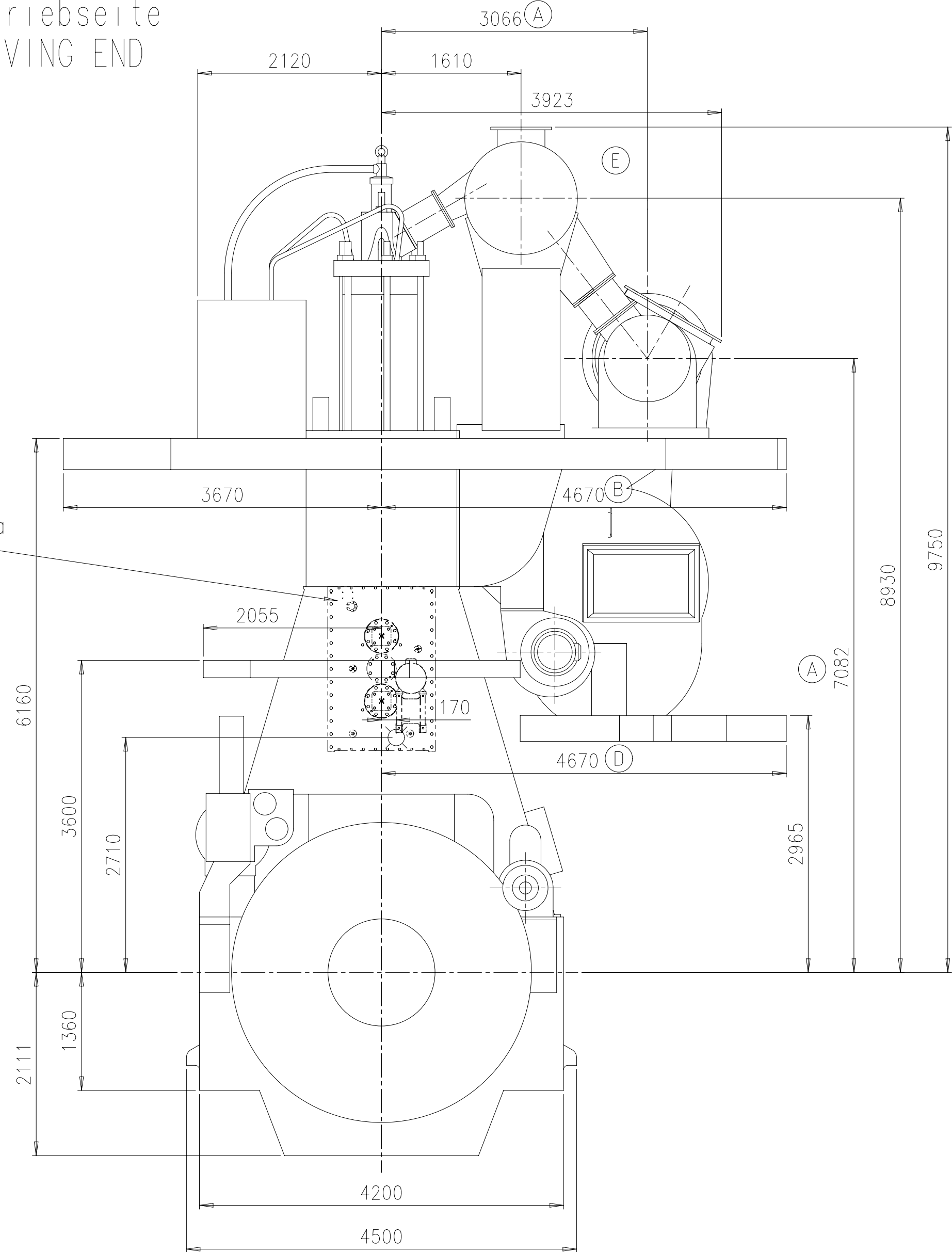
(A) Nur bei Ausfuehrung mit Elba  
ONLY FOR DESIGN WITH ELBA



(A) Nur bei Ausfuehrung mit Elba  
ONLY FOR DESIGN WITH ELBA

Antriebsseite  
DRIVING END

(A) Nur bei Ausfuehrung mit Elba  
ONLY FOR DESIGN WITH ELBA



TOOLS FOR PISTON  
AND CYL. COVER  
DISMANTLING

RECOMMENDED AREA TO  
BE COVERED BY THE  
ENGINE ROOM CRANE

PLATFORM  
OUTLINE

MINIMUM AREA TO  
BE COVERED BY THE  
ENGINE ROOM CRANE.

Nur bei Ausfuehrung mit Elba  
ONLY FOR DESIGN WITH ELBA (A)

LIFTING AREA FOR  
SCAVENGE AIR COOLER

Nur bei Ausfuehrung mit Elba  
ONLY FOR DESIGN WITH ELBA (A)

FOR OVERHAUL OF TC  
SEE MANUAL OF TC BUILDER

DIMENSIONS ONLY FOR REFERENCE  
THIS OUTLINE DRAWING CAN NOT BE USED FOR FINAL DESIGN.  
PLEASE TAKE CORRESPONDING DESIGN GROUP

SURFACE PROTECTION SEE GROUP 0344  
TOLERANCING PRINCIPLE ISO8015  
GENERAL TOLERANCES ACCORDING TO ISO2768-mK

Units: mm kg NX  
Made: 21.12.2017 Makarand Dongre  
Chkd: 22.12.2017 r002 Filegans  
Appd: 22.12.2017 mda006 Dacic

Basic Material: Scale 1:45  
Design Group: 0812  
Drawing ID: DAAD095659

Net Weight: 1  
Rev: E

(A) Nur bei Ausfuehrung mit Elba  
ONLY FOR DESIGN WITH ELBA  
(E) Nur bei Standard Ausfuehrung  
ONLY FOR STANDARD DESIGN

ca. Schwerpunkt  
APPROX. CENTRE OF GRAVITY

Gewicht ohne Wasser und Öl= 377 t  
WEIGHT WITHOUT WATER AND OIL

\* Platz fuer Demontage  
SPACE FOR REMOVAL

TURBOCHARGER A170/A270

Net Weight  
0,001

1	001	PAAD335991	DISMANTLING DIMENSIONS		DAAD120030		0,001
Quantity PER ENGINE	SEQ. NO.	Material ID	Material Name	Dimension, Occ.	Standard or Drawing	Basic Material Material Standard	Weight GR/NET
PAAD282093	Modif.	Free space for l.c.					Main Drw.
Modif.	Number	Drawn date	Number	Drawn date	Number	Drawn date	Number
Modif.	Number	Drawn date	Number	Drawn date	Number	Drawn date	Number

WINGD  
Winterthur Gas & Diesel

ENGINE OUTLINE VIEW

Motoransichten

Approved

H

Material ID

Product 6X62-B

Net Weight

Units: mm kg NX

Scale 1:45

Size A1

Page 1/1

Material ID

Rev. E

Download  
"DXF file"

Abgasseite  
EXHAUST SIDE

PIPE CONNECTION FROM SHIPYARD  
FREE OF FORCES AND MOMENTS  
COMPENSATOR / BELLOW TO BE APPLIED  
FOR POSITIONING & INSTALLATION  
SEE DG 8020  
THERMAL ELONGATION SEE REMARKS  
ON H-DRAWING 8155

Nur bei Ausfuehrung mit Elba  
ONLY FOR DESIGN WITH ELBA

PIPE CONNECTION FROM SHIPYARD  
FREE OF FORCES AND MOMENTS  
COMPENSATOR / BELLOW TO BE APPLIED  
FOR POSITIONING & INSTALLATION  
SEE DG 8020  
THERMAL ELONGATION SEE REMARKS  
ON H-DRAWING 8155

Nur bei Ausfuehrung mit Elba  
ONLY FOR DESIGN WITH ELBA

Nur bei Ausfuehrung mit Elba  
ONLY FOR DESIGN WITH ELBA

Antriebsseite  
DRIVING END

TOOLS FOR PISTON  
AND CYL. COVER  
DISMANTLING

RECOMMENDED AREA TO  
BE COVERED BY THE  
ENGINE ROOM CRANE

SPARES

PLATFORM  
OUTLINE

MINIMUM AREA TO  
BE COVERED BY THE  
ENGINE ROOM CRANE.

Nur bei Ausfuehrung mit Elba  
ONLY FOR DESIGN WITH ELBA

FOR OVERHAUL OF TC  
SEE MANUAL OF TC BUILDER

LIFTING AREA FOR  
SCAVENGE AIR COOLER

OUTLINE LOWER PLATFORM

OUTLINE UPPER PLATFORM

Nur bei Ausfuehrung mit Elba  
ONLY FOR DESIGN WITH ELBA

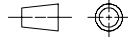
(A) \*\* Nur bei Ausfuehrung mit Elba  
ONLY FOR DESIGN WITH ELBA  
\*\*\* Nur bei Standard Ausfuehrung  
ONLY FOR STANDARD DESIGN

ca. Schwerpunkt  
APPROX. CENTRE OF GRAVITY

Gewicht ohne Wasser und Öl= 377 t  
WEIGHT WITHOUT WATER AND OIL

\* Platz fuer Demontage  
SPACE FOR REMOVAL

TURBOCHARGER A165-L/A265-L

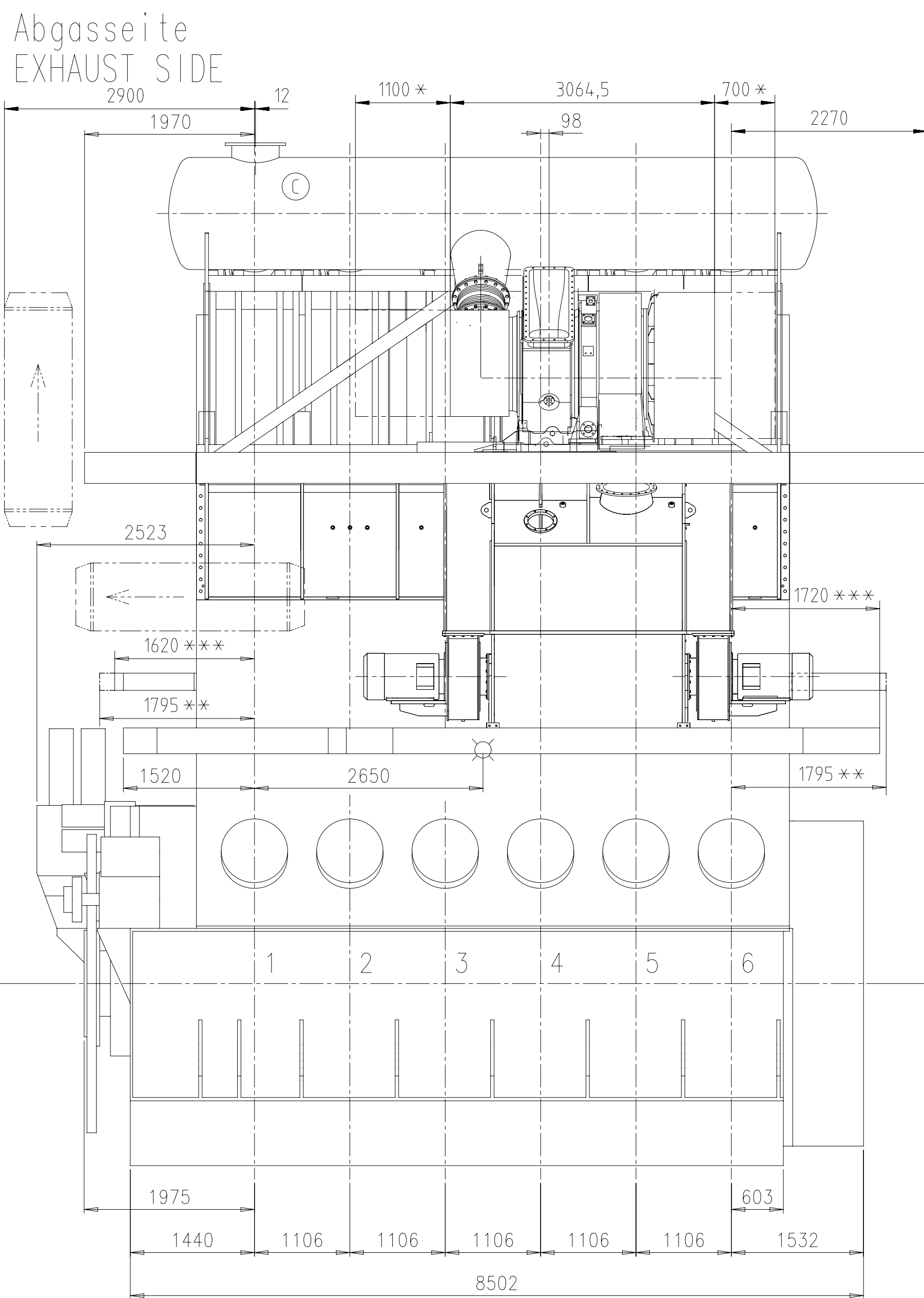
Net Weight		TURBOCHARGER A165-L/A265-L													
0,001															
1	001	PAAD335991	DISMANTLING DIMENSIONS			DAAD120030				0,001					
Quantity PER ENGINE	SEQ. NO	Material ID		Material Name		Dimension, Occ		Standard or Drawing	Basic Material Material Standard		Weight GR./NE				
PAAD308026	Free space for l.c.									Q-Code	Main Drw.				
										XXXXXX					
										Standard					
										ISO, JIS					
Material	Modif.	A	EAAD089730	13.12.2018	B	EAAD091695	23.06.2020	C	EAAD094270	07.08.2020					
		Number	Drawn date			Number	Drawn date			Number	Drawn date				
		Product W6X62-B				ENGINE OUTLINE VIEW									
						HP SCR									
						Motoransichten									
						HP SCR									
Units	mm kg	NX				Basic Material				Net Weight					
M4	Made	19.09.2018		zwa101 Wang		Scale		1:45		Size	A1	Page	1/1	Material ID	
	Chkd	11.10.2018		ihe003 Herceg		Design Group				Drawing ID	DAAD106337			Rev.	C
	Appd	11.10.2018		mda006 Dacic		0812									
0 ISO2768-mK															

DIMENSIONS ONLY FOR REFERENCE ONLY!  
THIS OUTLINE DRAWING CAN NOT BE USED FOR FINAL DESIGN!  
PLEASE TAKE CORRESPONDING DESIGN GROUP!

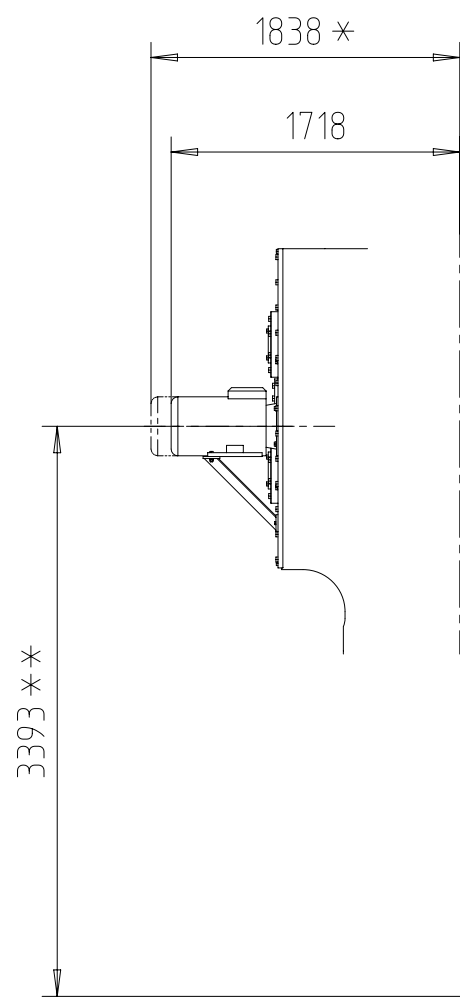
SURFACE PROTECTION SEE GROUP 0344  
TOLERANCING PRINCIPLE ISO8015  
GENERAL TOLERANCES ACCORDING TO ISO2768-mK



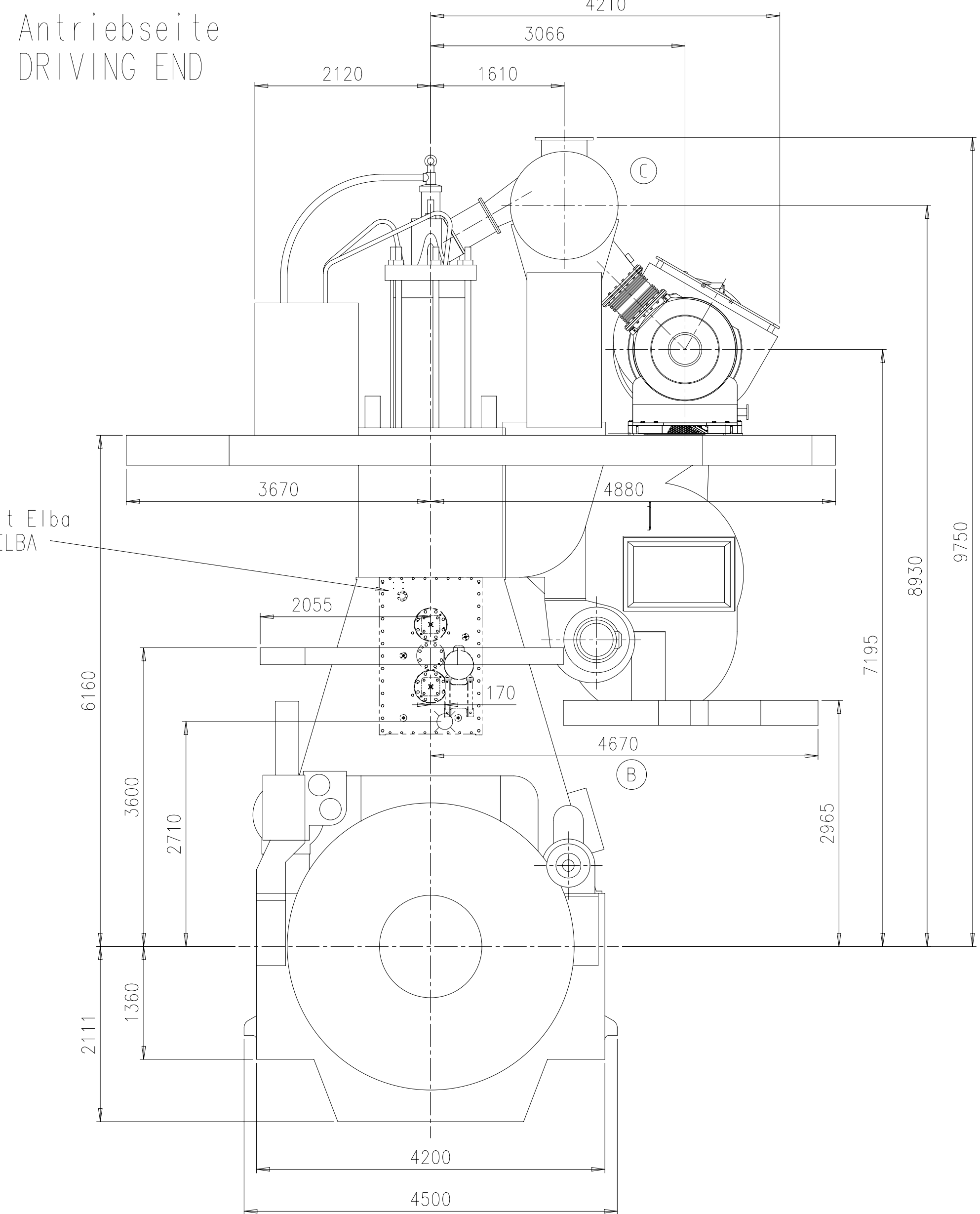
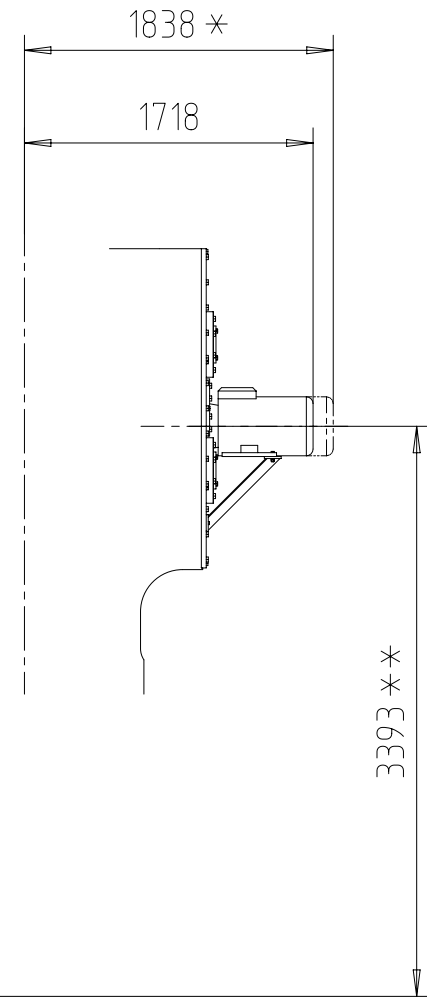
Download  
"DXF file"



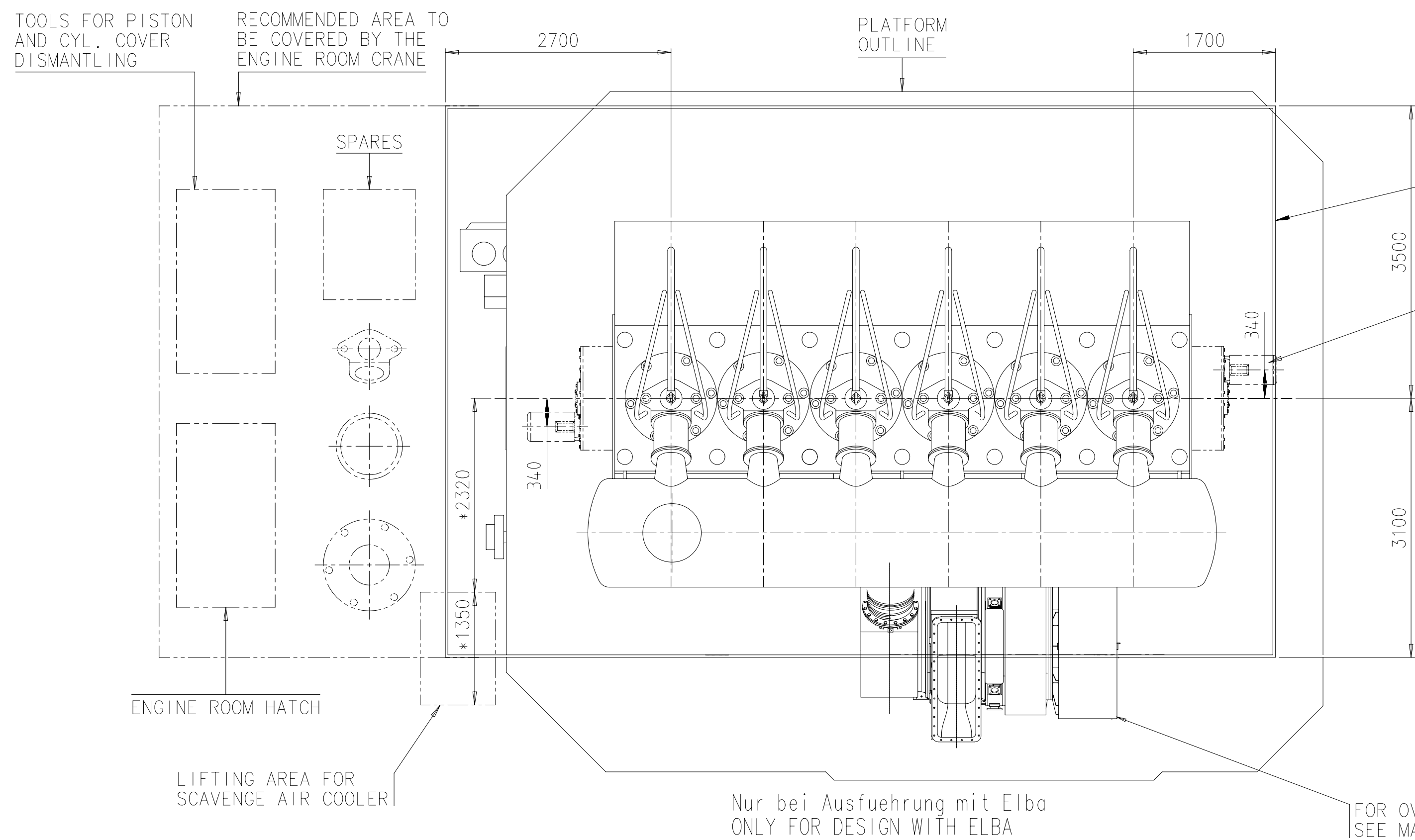
Nur bei Ausführung mit Elba  
ONLY FOR DESIGN WITH ELBA



Nur bei Ausführung mit Elba  
ONLY FOR DESIGN WITH ELBA



Nur bei Ausführung mit Elba  
ONLY FOR DESIGN WITH ELBA —



MINIMUM AREA TO  
BE COVERED BY THE  
ENGINE ROOM CRANE.

Nur bei Ausführung mit Elba  
ONLY FOR DESIGN WITH ELBA

Nur bei Ausführung mit Elba  
ONLY FOR DESIGN WITH ELBA

FOR OVERHAUL OF TC  
SEE MANUAL OF TC BUILDER

DIMENSIONS ONLY FOR REFERENCE  
THIS OUTLINE DRAWING CAN NOT BE USED FOR FINAL DESIGN.  
PLEASE TAKE CORRESPONDING DESIGN GROUP

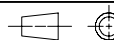
SURFACE PROTECTION SEE GROUP 0344		Chkd	16.05.2019	Vedang Purohit	Scale	1:45	Size	A1	Page	1/1	Material	
TOLERANCING PRINCIPLE ISO8015		Made	28.05.2019	ihe003 Hecleg	Design Group	0812	Drawing ID	DAAD115886				
GENERAL TOLERANCES ACCORDING TO ISO2768-mK		Apprd	28.05.2019	rfl002 Fleglans							Rev.	C

- \* Platz fuer Demontage  
SPACE FOR REMOVAL
- \*\* Nur bei Ausfuehrung mit Elba  
ONLY FOR DESIGN WITH ELBA
- \*\*\* Nur bei Standard Ausfuehrung  
ONLY FOR STANDARD DESIGN

ca. Schwerpunkt  
APPROX. CENTRE OF GRAVITY

Gewicht ohne Wasser und Oel = 377 t  
WEIGHT WITHOUT WATER AND OIL

TURBOCHARGER 1x MET66MB

Net Weight		TURBOCHARGER 1x MET66MB									
0.001											
(A)	1	001	PAAD335991		DISMANTLING DIMENSIONS			DAAD120030		0.00	
PER	Quantity ENGINE	SEQ NO	Material ID		Material Name		Dimension, Dct	Standard or Drawing	Basic Material Material Standard		Weight GR./NET
		Pack state per lot							O-code XXXXXX Standard ISO; JIS	Main Drw. H	
PAAD326852											
Material ID	A	EAD090804	22.08.2019	B	EAD094270	06.01.2021	C	EAD096542	28.04.2021		
	Modr.	Number	Drawn date	Number	Drawn date	Number	Drawn date	Number	Drawn date		
Product 6X62-B				ENGINE OUTLINE VIEW							
<b>WINGD</b> Winterthur Gas & Diesel				Motoransichten							
Units	mm kg	NX				Basic Material				Net Weight	
0344	Made	16.05.2019 Vedang Purohit		Scale 1:45		Size A1	Page 1/1	Material ID			
	Chkd	28.05.2019 rhe003 Hecreg		Design Group				Drawing ID		DAAD115886	
G TO ISO2768-mk	Appd	28.05.2019 iif002 Flegans		0812						Rev.	C

1	Approved
---	----------

100 - DIMENSIONAL DRAWING - Confidential

Download  
"DXF file"

Kolben mit Stange komplett  
und Stopfbuechse  
PISTON WITH ROD COMPLETE  
AND GLAND BOX

Zylindereinsatz mit  
Wasserleitmontel  
CYLINDER LINER WITH  
WATER GUIDE JACKET

Zylinderdeckel mit Auslassventil  
komplett und Wasserleitmontel  
CYLINDER COVER WITH EXHAUST  
VALVE COMPLETE AND WATER  
GUIDE JACKET

Auslassventil komplett  
EXHAUST VALVE COMPLETE

Gewicht ohne Hebwerkzeug:  
WEIGHT WITHOUT LIFTING TOOL:

1820 kg

Gewicht ohne Hebwerkzeug:  
WEIGHT WITHOUT LIFTING TOOL:

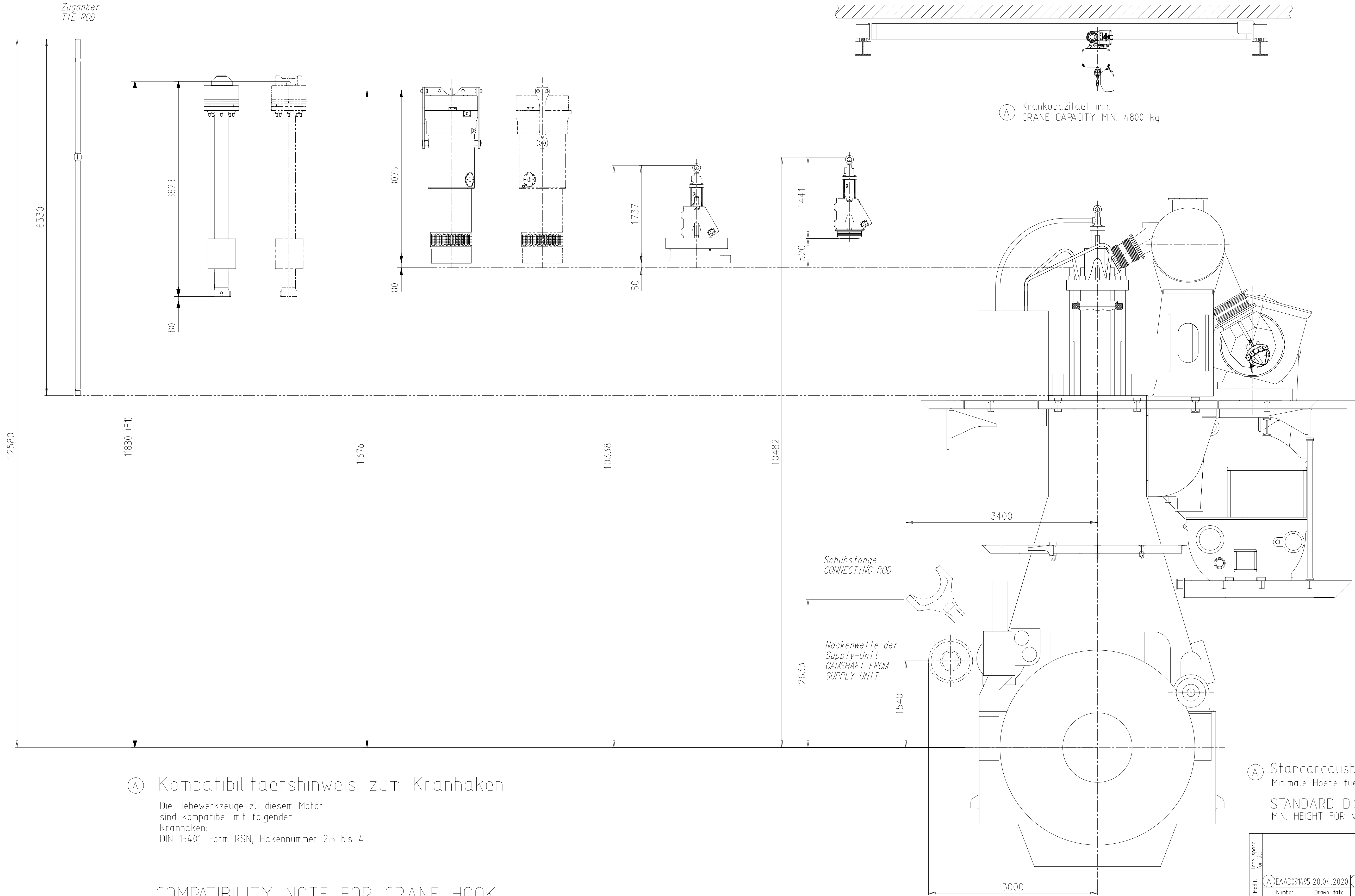
3985 kg

Gewicht ohne Hebwerkzeug:  
WEIGHT WITHOUT LIFTING TOOL:

2785 kg

Gewicht ohne Hebwerkzeug:  
WEIGHT WITHOUT LIFTING TOOL:

675 kg



### Ⓐ Kompatibilitaetshinweis zum Kranhaken

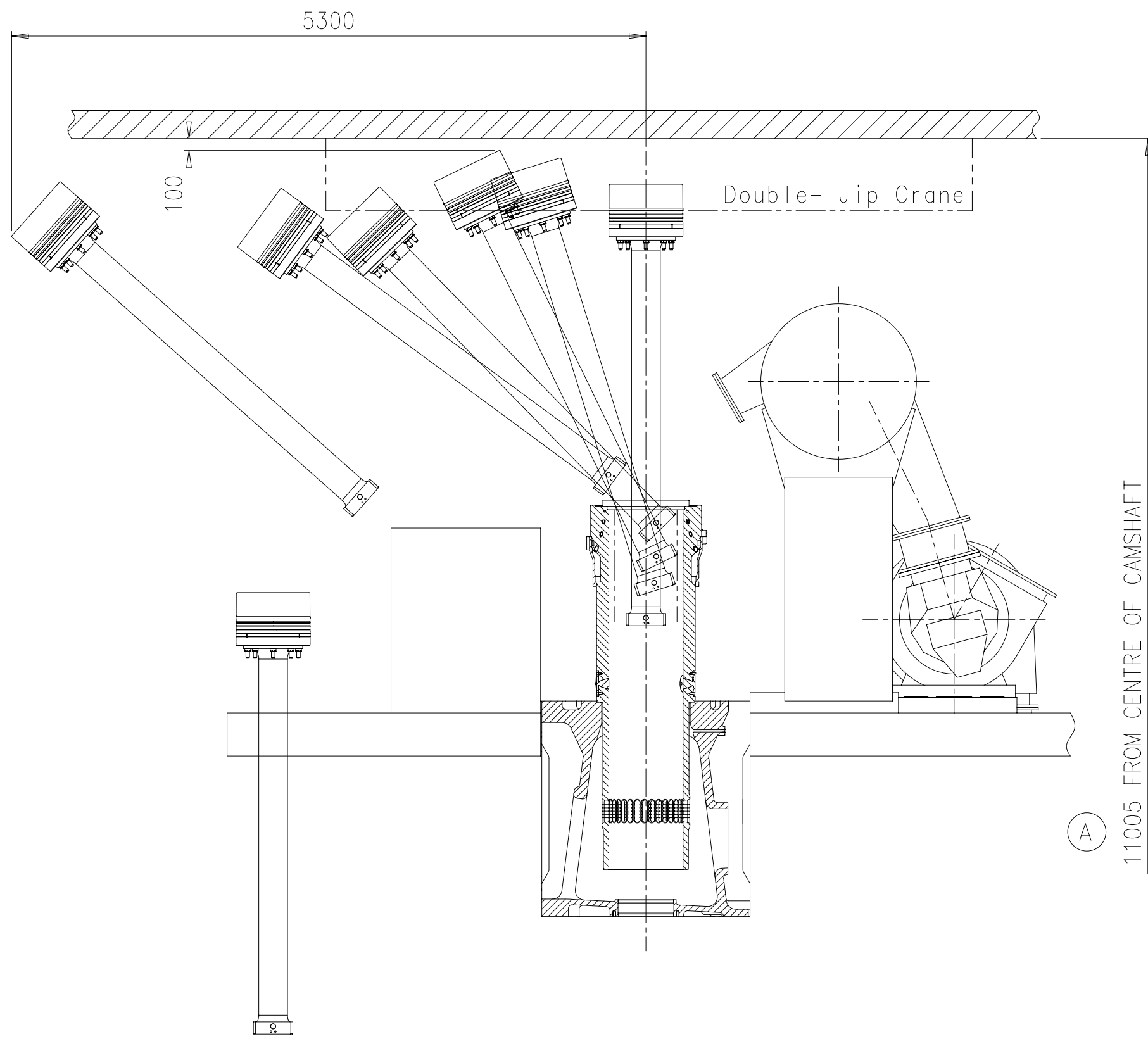
Die Hebwerkzeuge zu diesem Motor  
sind kompatibel mit folgenden  
Kranhaken:  
DIN 15401: Form RSN, Hakennummer 2.5 bis 4

### COMPATIBILITY NOTE FOR CRANE HOOK

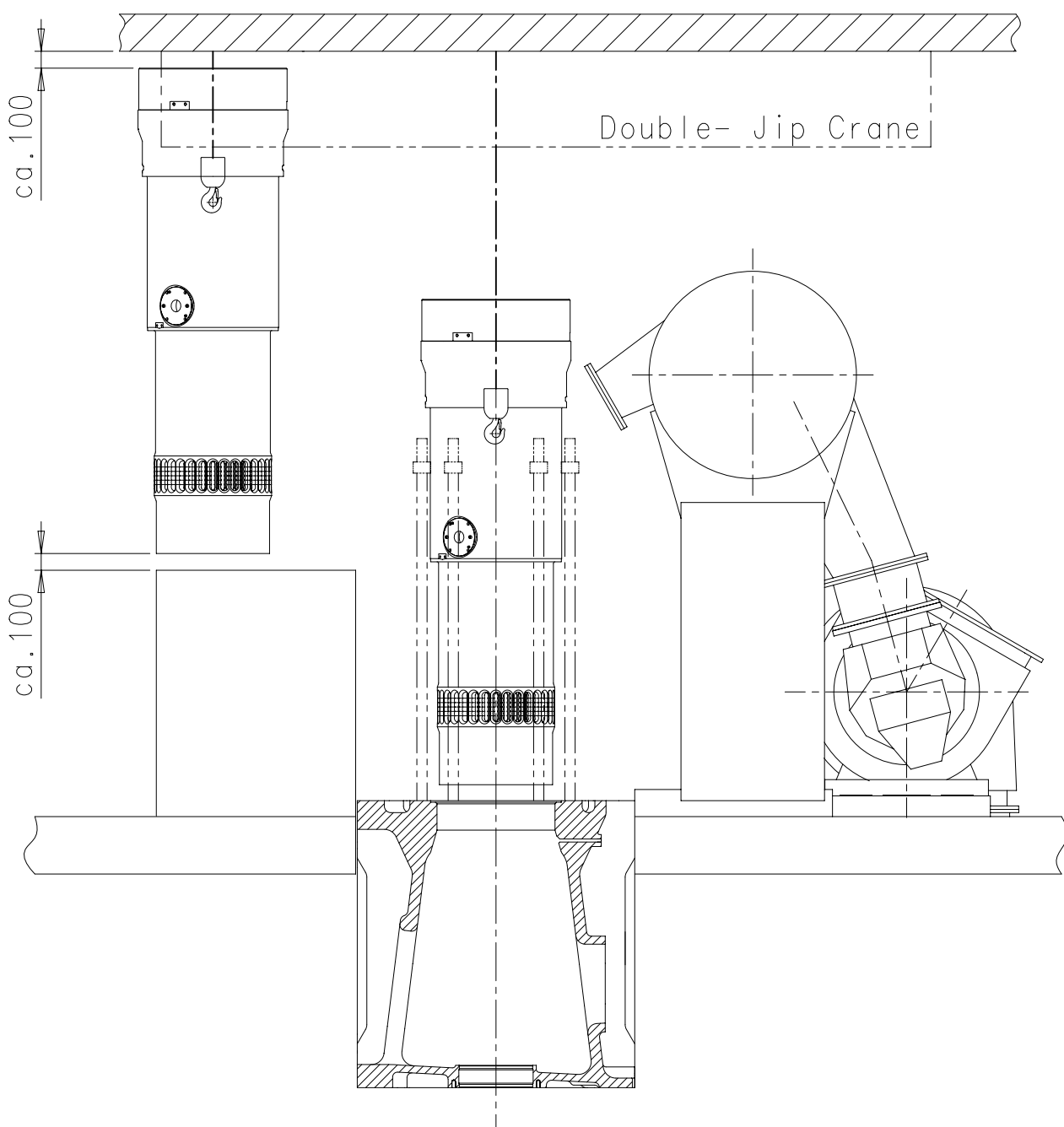
THE LIFTING TOOLS FOR THIS ENGINE  
ARE COMPATIBLE WITH FOLLOWING  
CRANE HOOK:  
DIN 15401: SHAPE RSN, HOOK NUMBER 2.5 TO 4

Ⓐ Standardausbau  
Minimale Hoehe fuer den vertikalen Ausbau: F1  
  
STANDARD DISMANTLING  
MIN. HEIGHT FOR VERTICAL REMOVAL: F1

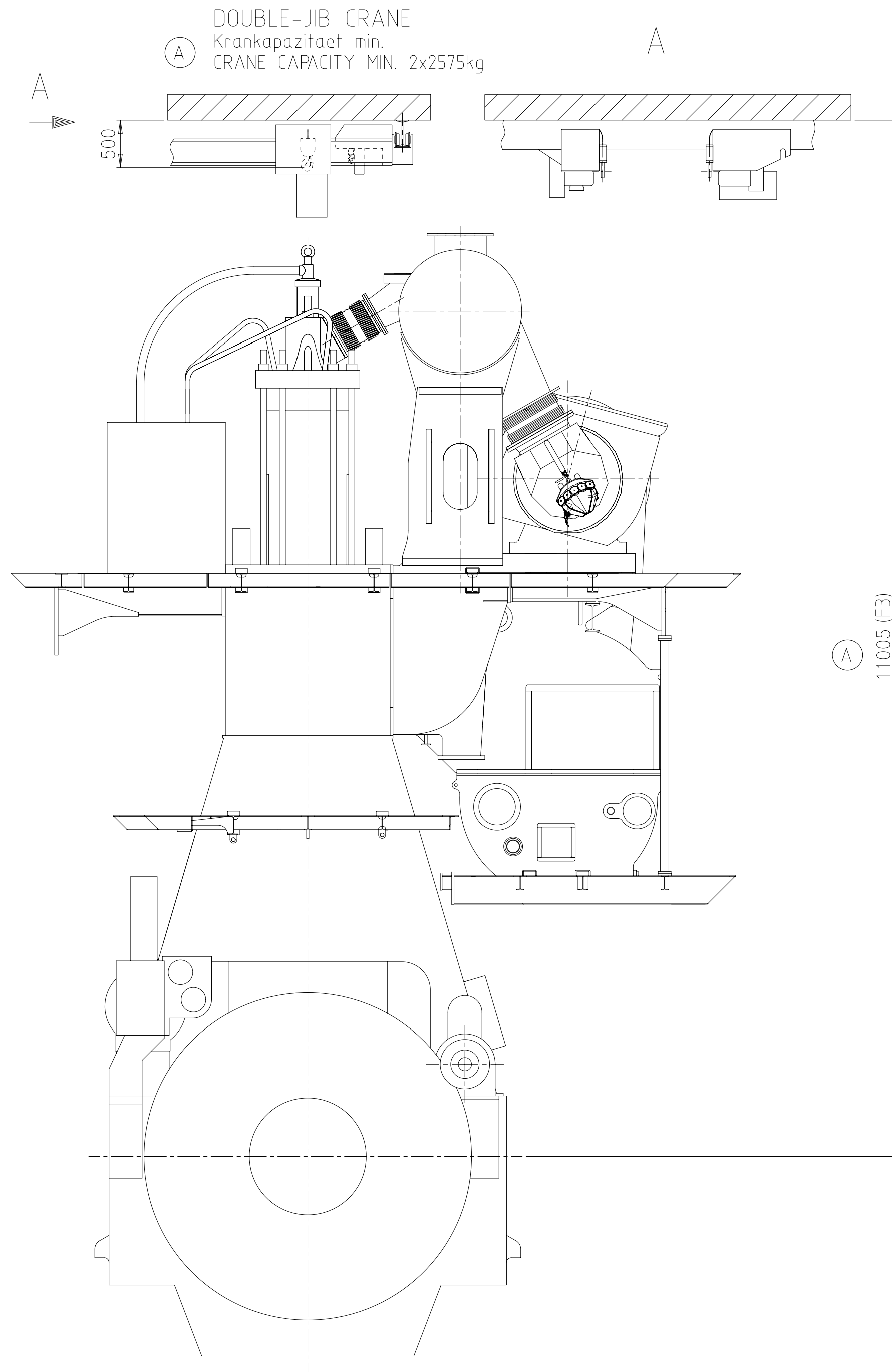
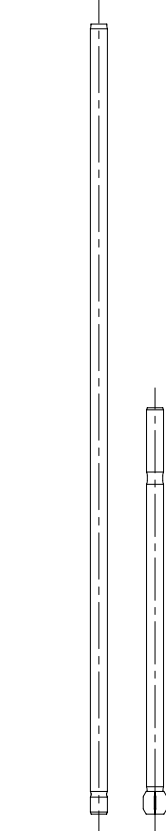
Free space for file				D-Code XXXXXX Standard ISO; JIS		Main Dwg.
Modif.	Ⓐ	EAAD091495	20.04.2020			
Number			Drawn date		Number	Drawn date
Product X62-B		DISMANTLING DIMENSIONS		Ausbaumasse		
Units	mm kg	NX	Basic Material	Net Weight 0,001		
Made	09.08.2019	pje101	Jevremovic	Scale	1:45	Size
Chkd	20.08.2019	agu101	Gubler	Design Group		Page
Appd	21.08.2019	mda006	Dacic	Drawing ID	DAAD120030	Rev.
SURFACE PROTECTION SEE GROUP 0344		TOLERANCING PRINCIPLE ISO8015		GENERAL TOLERANCES ACCORDING TO ISO2768-mK		



1. Disassembly of cylinder cover
2. Disassemble three cylinder cover bolts on fuel side
3. Pull out the piston with standard piston disassembly tool, then attach tool for further lifting
4. Proceed with tilted piston removal
5. place piston on support for overhaul



6. Screw in the suspension points on the cylinder liner
7. Attach crane hooks for lifting
8. Pull out the liner until over top of rail unit
9. Move liner over rail unit and put in designated place for overhaul



## Ⓐ Kompatibilitaetshinweis zum Kranhaken für Double-Jib Kran

Die Hebewerkzeuge zu diesem Motor sind kompatibel mit folgenden Kranhaken:  
DIN 15401: Form RSN, Hakennummer 08

## COMPATIBILITY NOTE FOR CRANE HOOK FOR DOUBLE-JIB CRANE

THE LIFTING TOOLS FOR THIS ENGINE ARE COMPATIBLE WITH FOLLOWING CRANE HOOK:  
DIN 15401: SHAPE RSN, HOOK NUMBER 08

## Ⓐ Voraussetzungen fuer diese Ausbauart

- zweiteilige Zylinderdeckel-Dehnbolzen auf der Brennstoffseite
- zweiteilige Zuganker im Reparaturfall
- Spezialkran (DOUBLE-JIB)
- spezielle Hebewerkzeuge fuer den Zylindereinsatz und den Kolben

## REQUIREMENTS FOR THIS DISMANTLING METHOD

- TWO-PIECE ELASTIC STUDS FOR CYLINDER COVER ON FUEL SIDE
- TWO-PART TIE ROD IN CASE OF REPAIR
- SPECIAL CRANE (DOUBLE-JIB)
- SPECIAL LIFTING TOOLS FOR CYLINDER LINER AND PISTON

## Ⓐ Standardausbau mit Double-Jib Kran

Minimale Hoehe fuer den gekippten Ausbau mit dem Double-Jib Kran: F3  
Die Distanz von der obersten Hakenposition bis zur Decke varriert je nach der ausgewaehlten Kranausfuehrung

Für gekippten Ausbau mit Double-Jib E/R Kran  
von Fuchs Foerdertechnik AG

## STANDARD DISMANTLING WITH DOUBLE-JIB CRANE

MIN. HEIGHT FOR TILTED REMOVAL WITH DOUBLE-JIB CRANE: F3  
DISTANCE BETWEEN TOP POSITION OF HOOK AND ENGINE ROOM CEILING VARIES DEPENDING ON CRANE TYPE.

FOR TILTED REMOVAL WITH DOUBLE JIB E/R CRANE  
BY FUCHS FOERDERTECHNIK AG

SURFACE PROTECTION SEE GROUP 0344	Made	09.08.2019	pje101	Jevremovic	Scale	1:45	Size	A1	Page	2/2	Material	PAAD335991
TOLERANCING PRINCIPLE ISO8015	Chkd	20.08.2019	agu101	Gubler	Design Group		Drawing ID	DAAD120030	Rev.	A		
GENERAL TOLERANCES ACCORDING TO ISO2768-mK	Appd	21.08.2019	mda006	Dacic	0812							

## WinGD-6X52DF\_Engine-outline-views

### TRACK CHANGES

DATE	SUBJECT	DESCRIPTION
2018-02-26	DRAWING SET	First web upload
2018-09-20	DAAD103324 DAAD079845	Engine Outline View for Turbocharger type 1xMET66MB has been added. Revised Engine Outline View for Turbocharger type 1xA170/ A270 has been updated.
2019-05-15	DAAD103324 DAAD079845	Revised Engine Outline Views for Turbocharger type 1xA170/ A270 and 1xMET66MB have been updated.
2019-12-03	DAAD117286	Engine Outline View for Turbocharger type 1xMET60MB-ELBA has been added.
2020-07-17	DAAD129137 DAAD027102	Engine Outline Views for Turbocharger type 1xA175-L/A275-L has been added. Revised Dismantling Dimensions drawing has been updated.
2021-05-24	PAAD308026 PAAD282093 PAAD326852	Revised Engine Outline Views for Turbocharger type 1xA165/ A265, 1xA170/ A270 and 1xMET66MB have been updated.