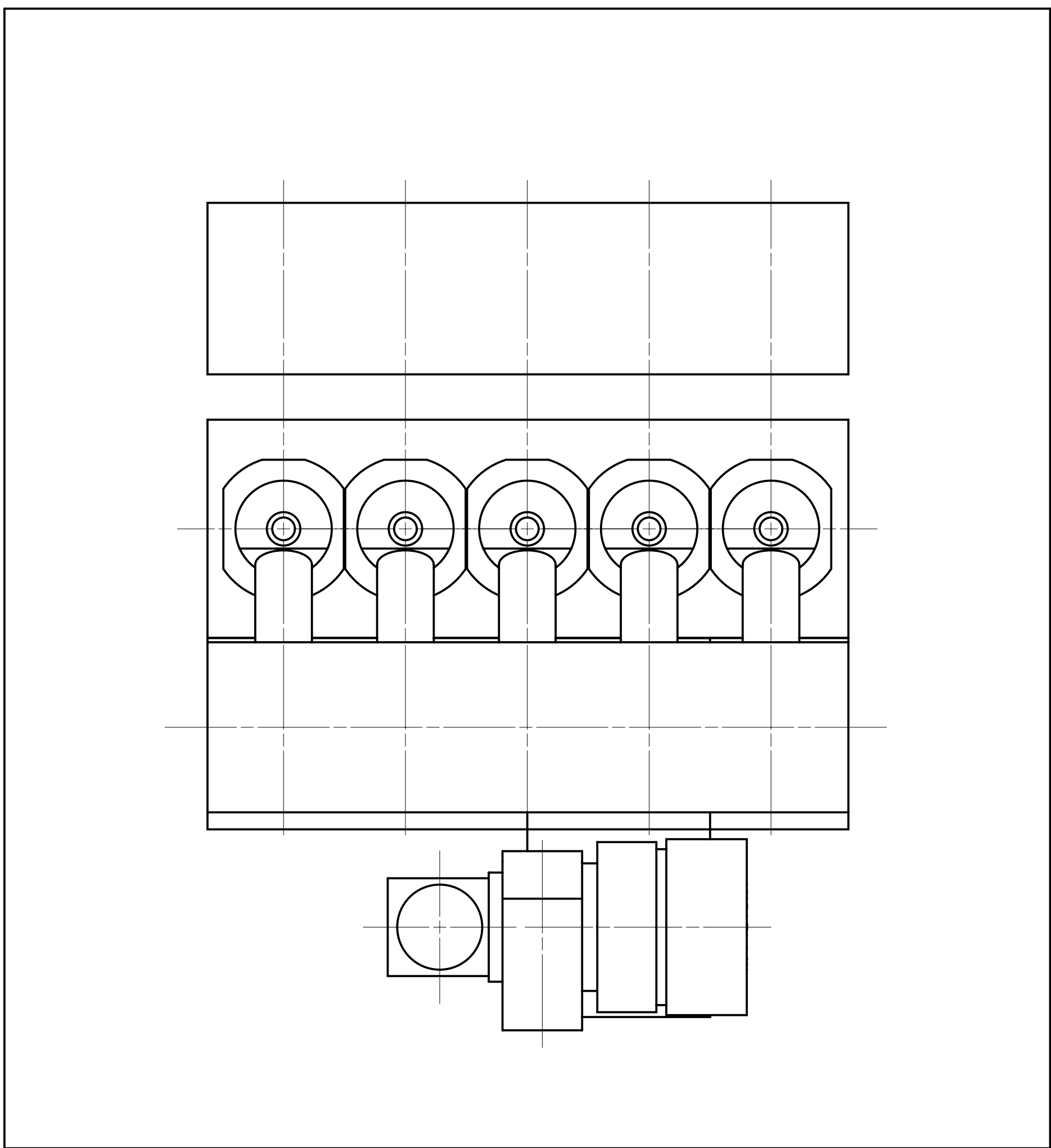
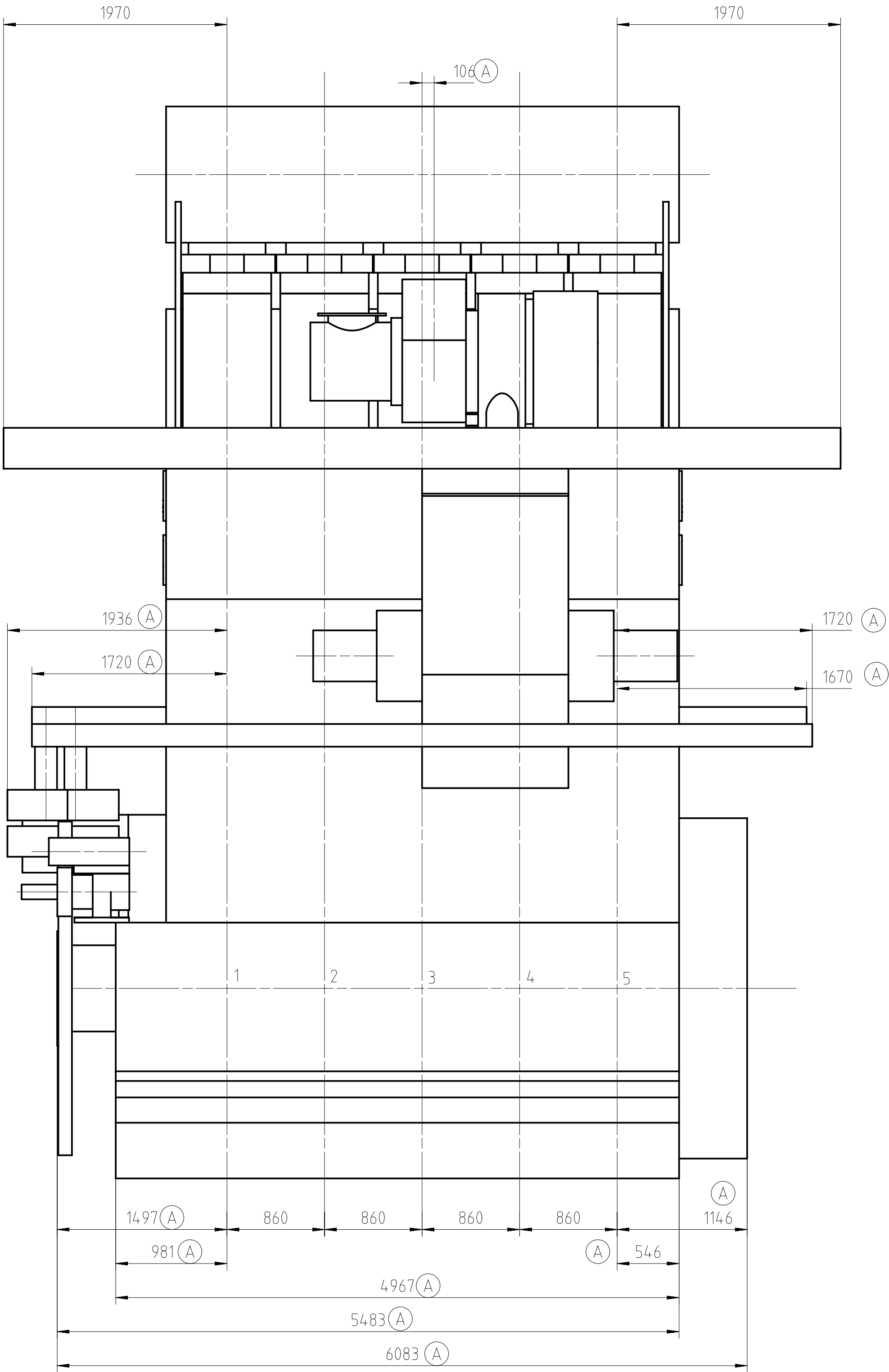
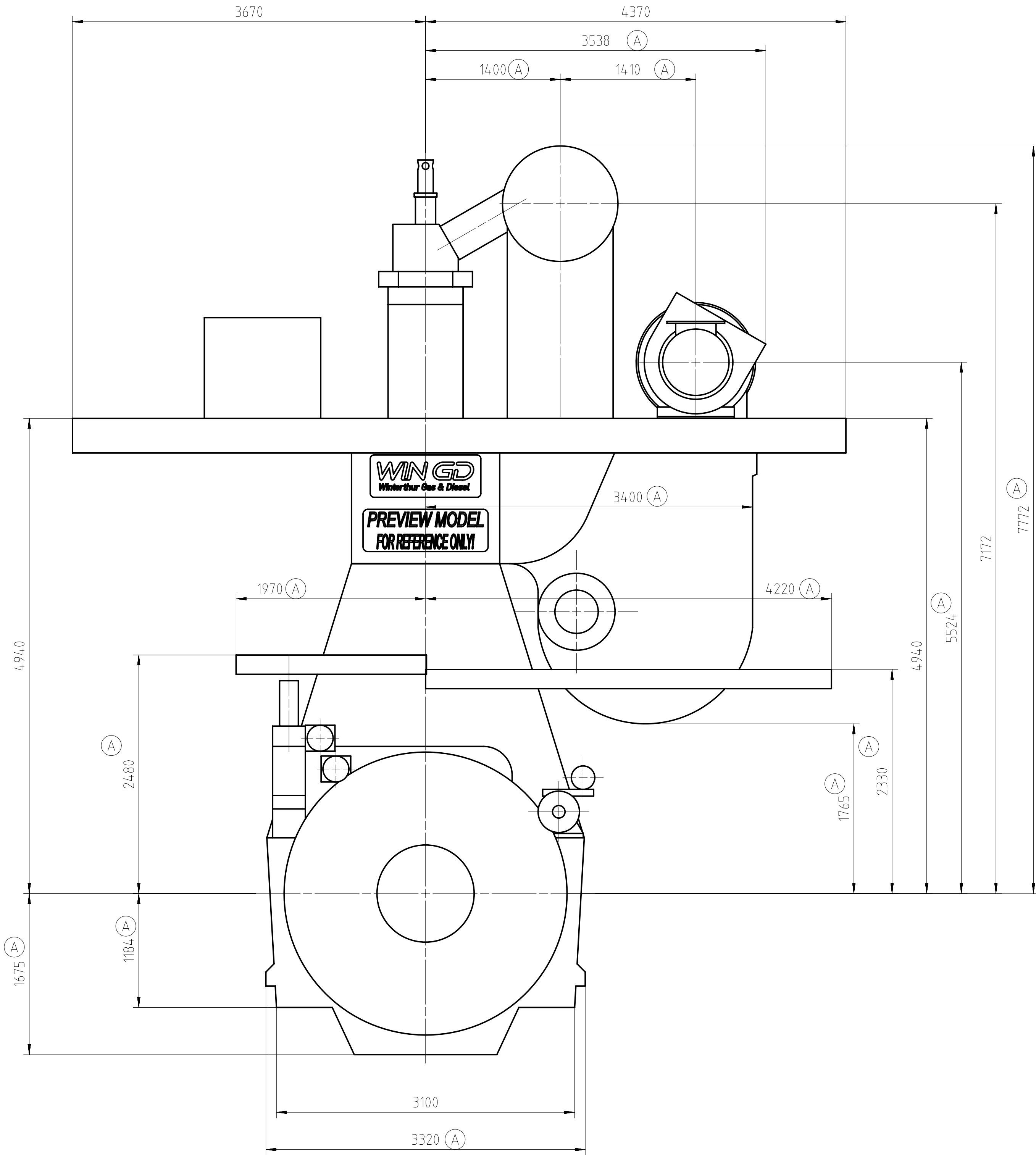


Download
"DXF file"

EXHAUST SIDE



DRIVING END



TURBOCHARGER A265-L

5X52-S2.0									
Prod.									
Change History									
A	wfa01	stn017	21.12.2021	CH44000150	Drawing Updated			4	3
-	ffa015	uba001	31.01.2020	-	-			-	-
Rev.	Creator	Approver	Approval Date	Change ID	Change Synopsis	Approved	Activity Code	E	C
WIN GD Winterthur Gas & Diesel									
ENGINE OUTLINE VIEW									
Dimension									
Scale	1:30								
Units	mm	kg							
Basic Material									
Net Weight									
Design	Yes								
Group									
Qty	per								
Engine	A0								
Item ID									
PAAD349427									
Drawing									
Page	1/1								

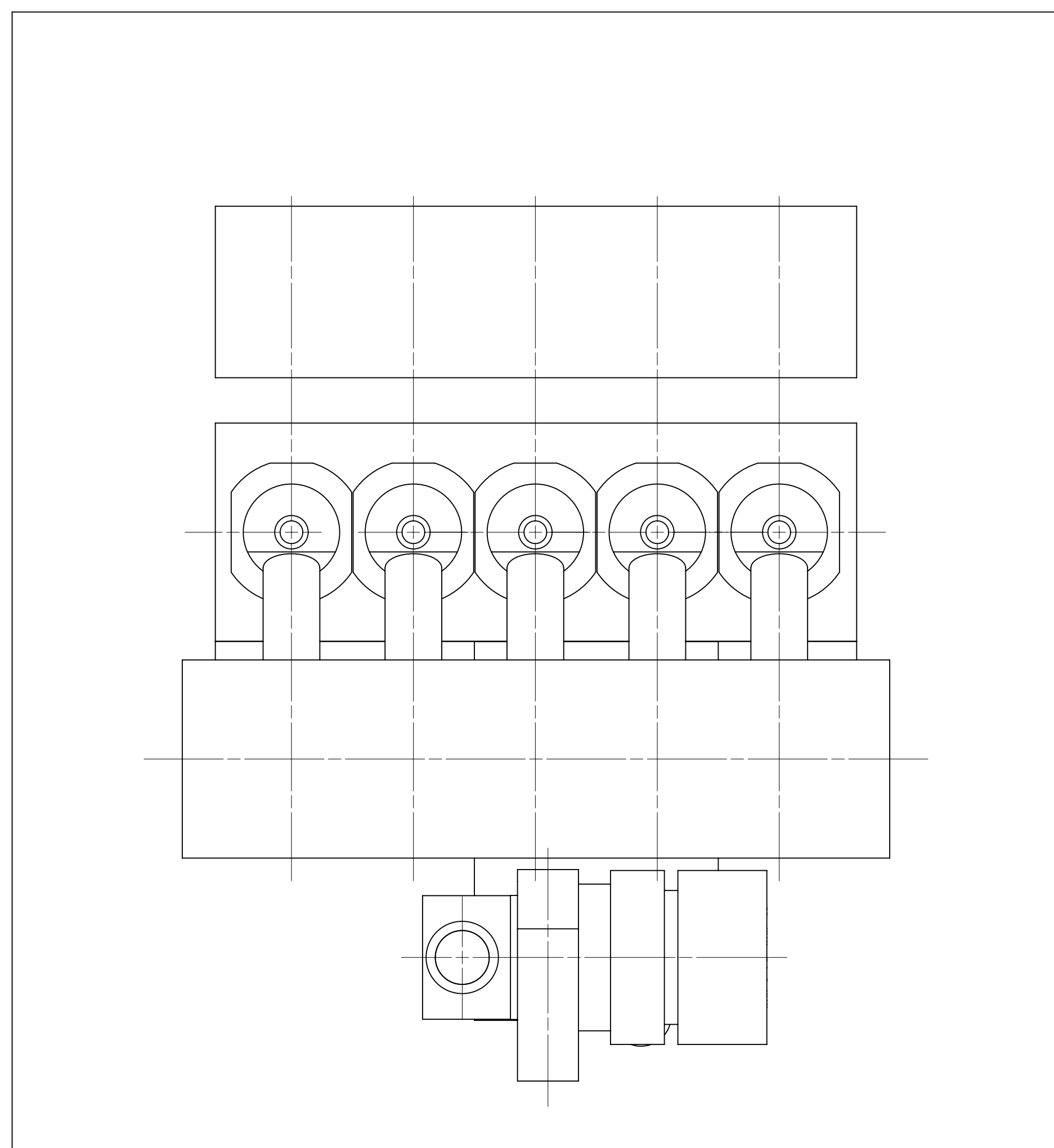
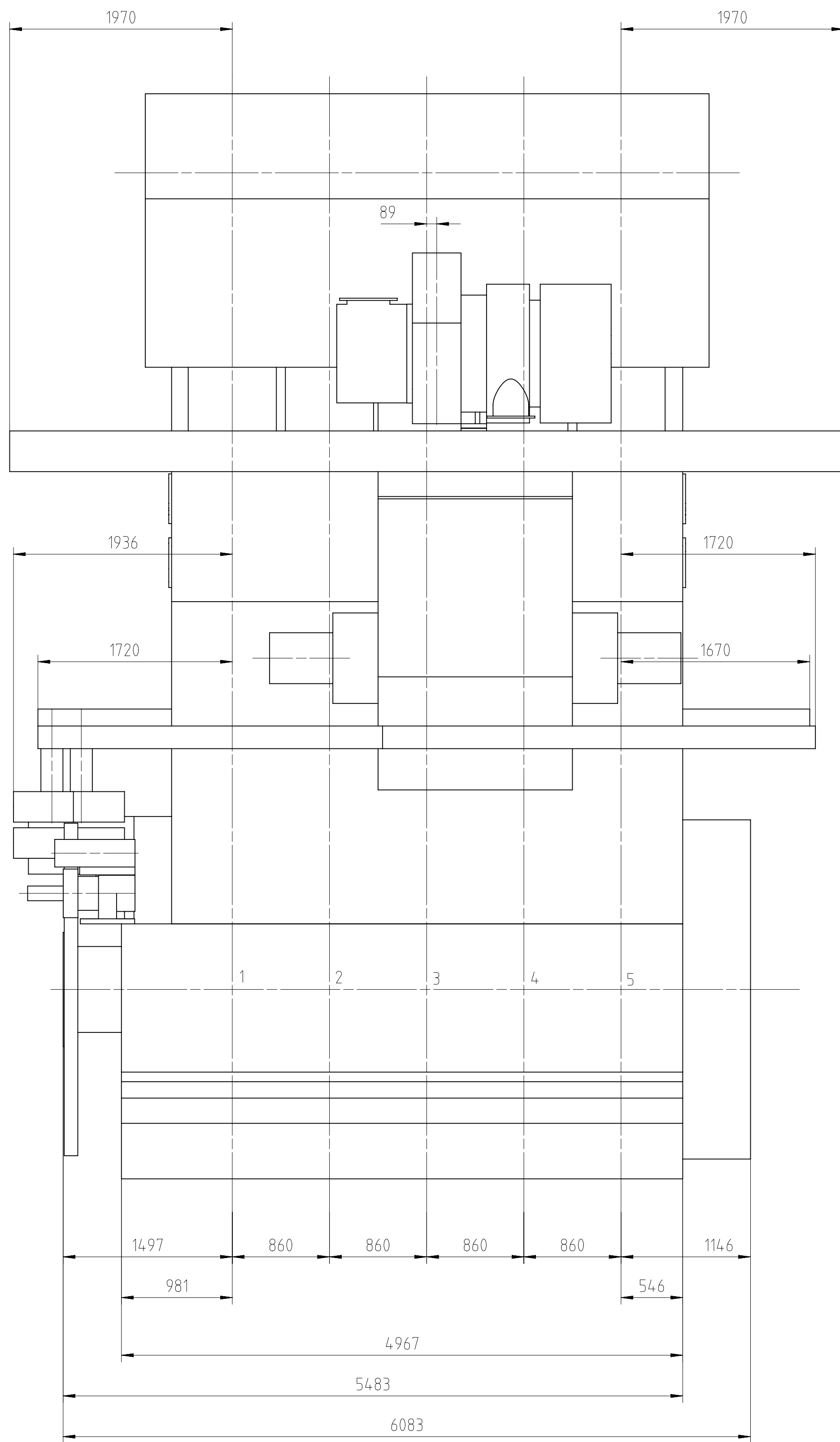
DIMENSIONS ONLY FOR REFERENCE ONLY!
THIS OUTLINE DRAWING CAN NOT BE USED FOR FINAL DESIGN!
PLEASE TAKE CORRESPONDING DESIGN GROUP!

SURFACE PROTECTION SEE GROUP 0344
TOLERANCING PRINCIPLE ISO8015
GENERAL TOLERANCES ACCORDING TO ISO2768-mS

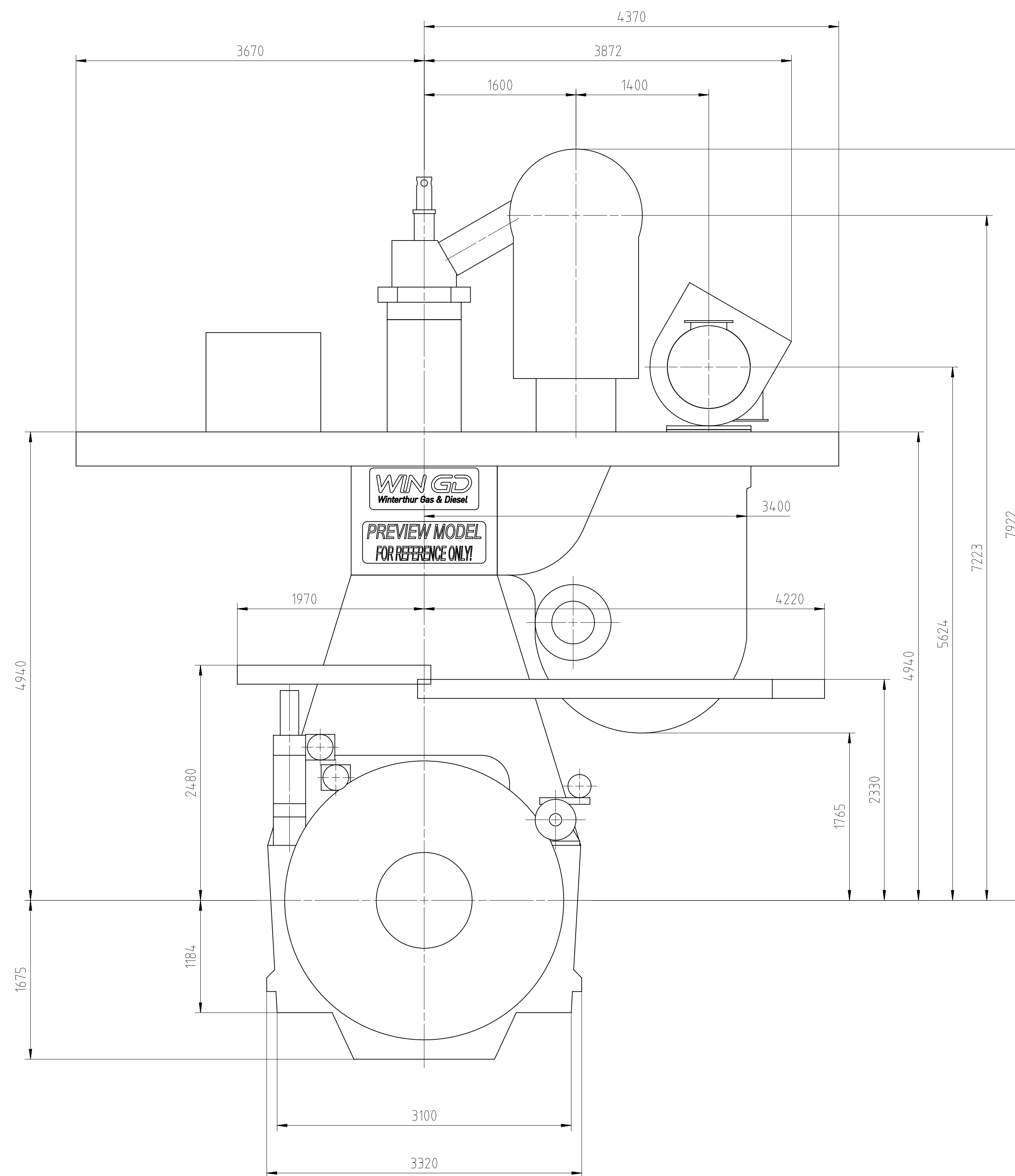
Copyright Winterthur Gas & Diesel Ltd. All rights reserved.
No part of this document may be reproduced, stored in a retrieval system, or transmitted, in any form or by any means, electronic, mechanical, photocopying, recording, or by any information storage and retrieval system, without prior written consent of Winterthur Gas & Diesel Ltd.

Download
"DXF file"

EXHAUST SIDE



DRIVING END



TURBOCHARGER 1xMET48MB

[illegible]

DIMENSIONS ONLY FOR REFERENCE ONLY!
THIS OUTLINE DRAWING CAN NOT BE USED FOR FINAL DESIGN!
PLEASE TAKE CORRESPONDING DESIGN GROUP!

SURFACE PROTECTION SEE GROUP 0344
TOLERANCING PRINCIPLE ISO8015
GENERAL TOLERANCES ACCORDING TO

Copyright Winther G & David Ltd. All rights reserved. By taking possession of the drawing the recipient accepts and agrees these rights. Neither the whole nor any part of this drawing may be used in any way for construction, fabrication, marketing or any other purpose not copied in any way made accessible to this parties without the written consent of Winther G & David Ltd.		Main Design	Yes	Design Group	0812-01	Q-Code	XXXXX	Standard	WDS
Qty per	Engine	A0	Item ID	PTAA020819			Drawing Page/s	1/1	

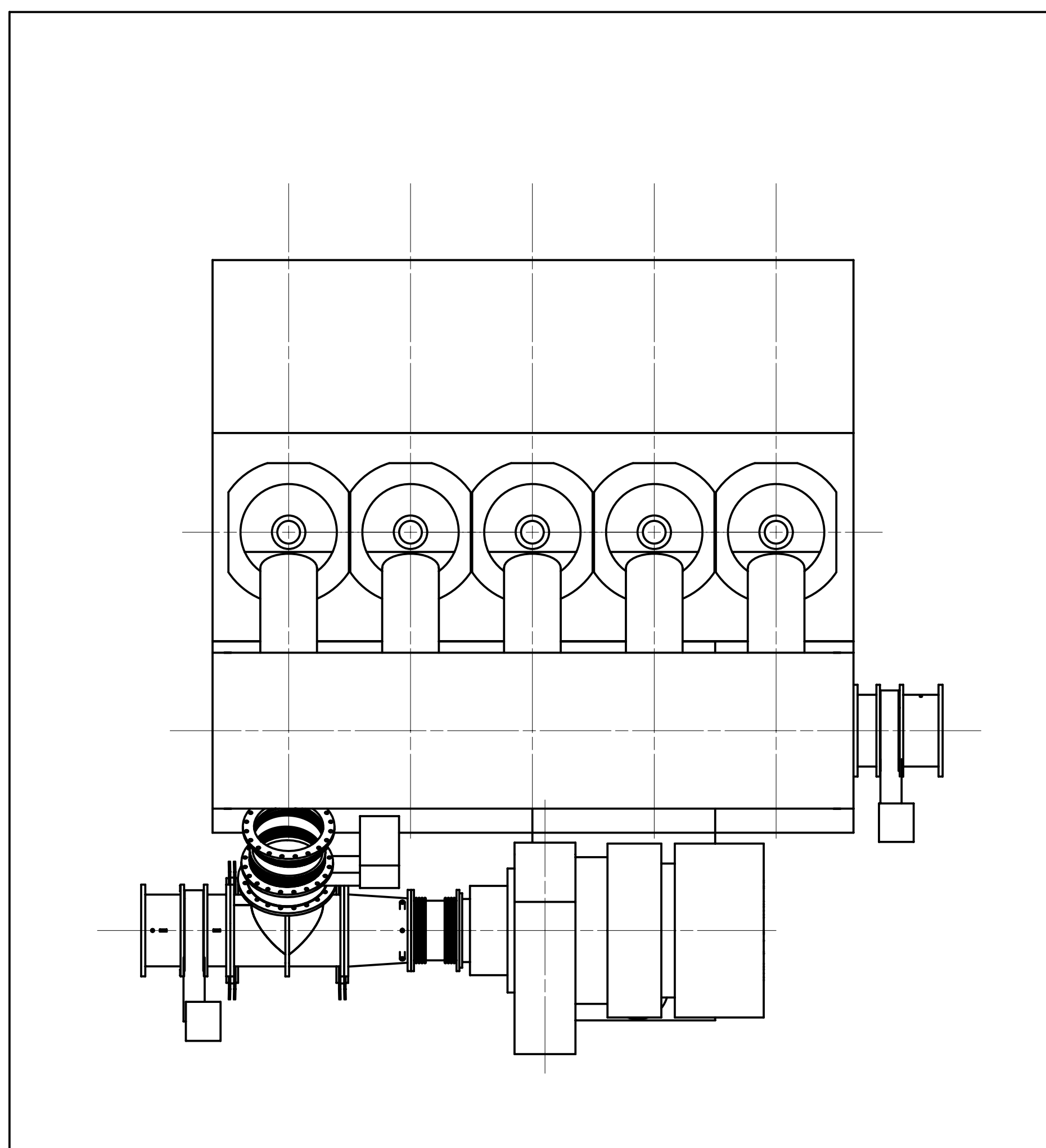
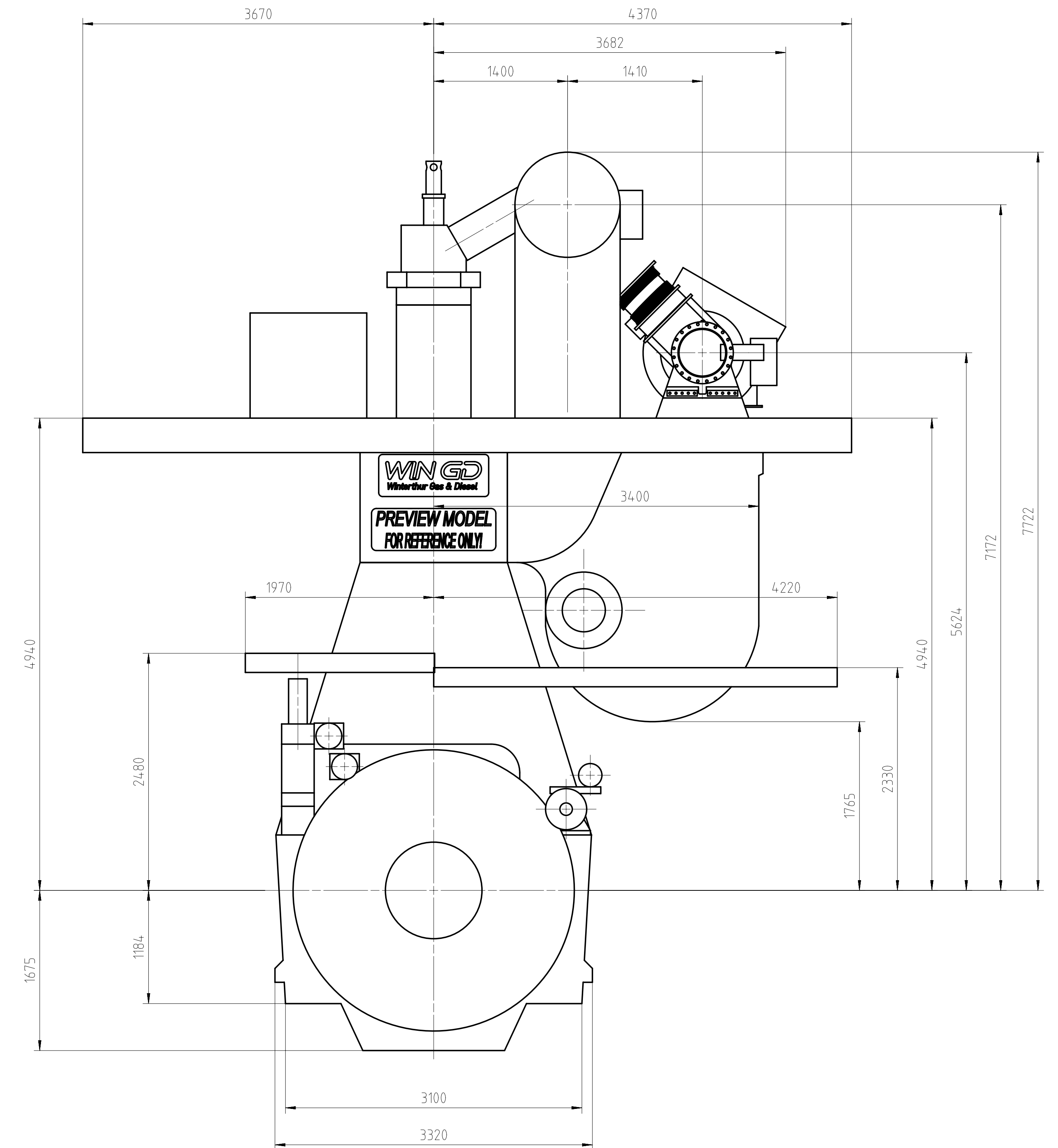
Download
"DXF file"

EXHAUST SIDE

DRIVING END



PIPE CONNECTION FROM SHIPYARD
FREE OF FORCES AND MOMENTS
COMPENSATOR / BELLOW TO BE APPLIED
FOR POSITIONING & INSTALLATION
SEE 8020
THERMAL ELONGATION SEE REMARKS
ON H-DRAWING DG8155



TURBOCHARGER MET48MBII

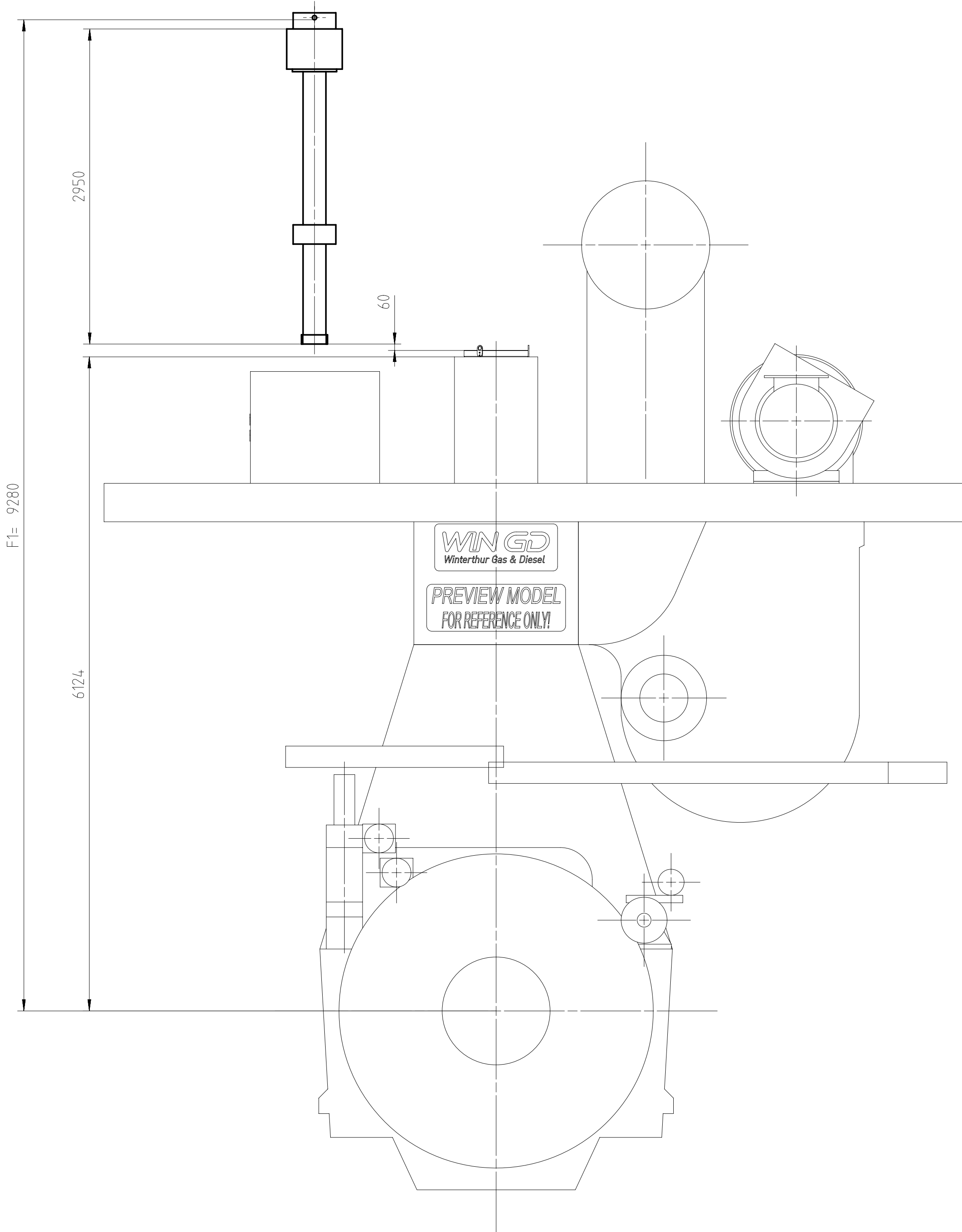
[illegible]

DIMENSIONS ONLY FOR REFERENCE ONLY!
THIS OUTLINE DRAWING CAN NOT BE USED FOR FINAL DESIGN!
PLEASE TAKE CORRESPONDING DESIGN GROUP!


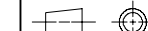
SURFACE PROTECTION SEE GROUP 0344
TOLERANCING PRINCIPLE ISO8015
GENERAL TOLERANCES ACCORDING TO

Scale	1:30	1:60	1:120	1:240	Units	(mm)	(kg)	Basic Material	Net Weight	0.00
Copyright Winther Group & Dried Ltd. All rights reserved. By taking possession of the drawing the recipient recognizes and acknowledges that the drawing is the property of Winther Group & Dried Ltd. and that the drawing is not to be used for any other purpose without the written permission of Winther Group & Dried Ltd. The drawing is not to be used for any other purpose without the written permission of Winther Group & Dried Ltd.										
Main Design	Yes	Design Group	0812-01	Q Code	XXXXX	Standard	WDS			
Qty per	Engine	A0	Item ID	PTAA036882				Drawing Page/s	1/1	

Download
"DXF file"



STANDARD DISMANTLING F1

Prod.		5, 6, 7, 8X52-S2,0											
Change History													
	-	ffa0015	mda006	16.02.2022	CNA001529	Main Design/Drawing Introduced			- -				
Rev.		Creator	Approver	Approval Date	Change ID	Change Synopsis			Approved	Activity Code	E	C	
					DISMANTLING DIMENSIONS - CONCEPT								
separate BOM available					Dimension								
Scale		1:45		NX	Units	[mm]	[kg]	Basic Material			Net Weight	0.001	
<small>Copyright Winterthur Gas & Diesel Ltd. All rights reserved. By taking possession of the drawing the recipient recognizes and declares these rights. Neither the whole nor any part of this drawing may be used in any way for construction, fabrication, marketing or any other purpose nor copied in any way nor made accessible to third parties without the previous written consent of Winterthur Gas & Diesel Ltd.</small>					Main Design	Yes	Design Group	0816-01		Q-Code	XXXXXX	Standard	WDS
					Qty per	Engine	A1	Item ID	PAAD348602		Drawing Page/s	1/1	

WinGD-5X52-S2.0_Engine Outline Views

TRACK CHANGES

DATE	SUBJECT	DESCRIPTION
2020-06-18	DRAWING SET	First web upload
2021-12-24	PAAD349427	Revised Engine outline view for Turbocharger Type A265-L has been updated.
2022-08-30	PTAA020819 PTAA038082 PAAD348602	New Engine outline view for Turbocharger Type 1xMET48-MB and 1xMET48-MB-II has been added. Dismantling Dimensions drawing has been added.

DISCLAIMER

© Copyright by Winterthur Gas & Diesel Ltd.

All rights reserved. No part of this document may be reproduced or copied in any form or by any means (electronic, mechanical, graphic, photocopying, recording, taping or other information retrieval systems) without the prior written permission of the copyright owner.

THIS PUBLICATION IS DESIGNED TO PROVIDE AN ACCURATE AND AUTHORITATIVE INFORMATION WITH REGARD TO THE SUBJECT-MATTER COVERED AS WAS AVAILABLE AT THE TIME OF PRINTING. HOWEVER, THE PUBLICATION DEALS WITH COMPLICATED TECHNICAL MATTERS SUITED ONLY FOR SPECIALISTS IN THE AREA, AND THE DESIGN OF THE SUBJECT-PRODUCTS IS SUBJECT TO REGULAR IMPROVEMENTS, MODIFICATIONS AND CHANGES. CONSEQUENTLY, THE PUBLISHER AND COPYRIGHT OWNER OF THIS PUBLICATION CAN NOT ACCEPT ANY RESPONSIBILITY OR LIABILITY FOR ANY EVENTUAL ERRORS OR OMISSIONS IN THIS BOOKLET OR FOR DISCREPANCIES ARISING FROM THE FEATURES OF ANY ACTUAL ITEM IN THE RESPECTIVE PRODUCT BEING DIFFERENT FROM THOSE SHOWN IN THIS PUBLICATION. THE PUBLISHER AND COPYRIGHT OWNER SHALL UNDER NO CIRCUMSTANCES BE HELD LIABLE FOR ANY FINANCIAL CONSEQUENTIAL DAMAGES OR OTHER LOSS, OR ANY OTHER DAMAGE OR INJURY, SUFFERED BY ANY PARTY MAKING USE OF THIS PUBLICATION OR THE INFORMATION CONTAINED HEREIN.