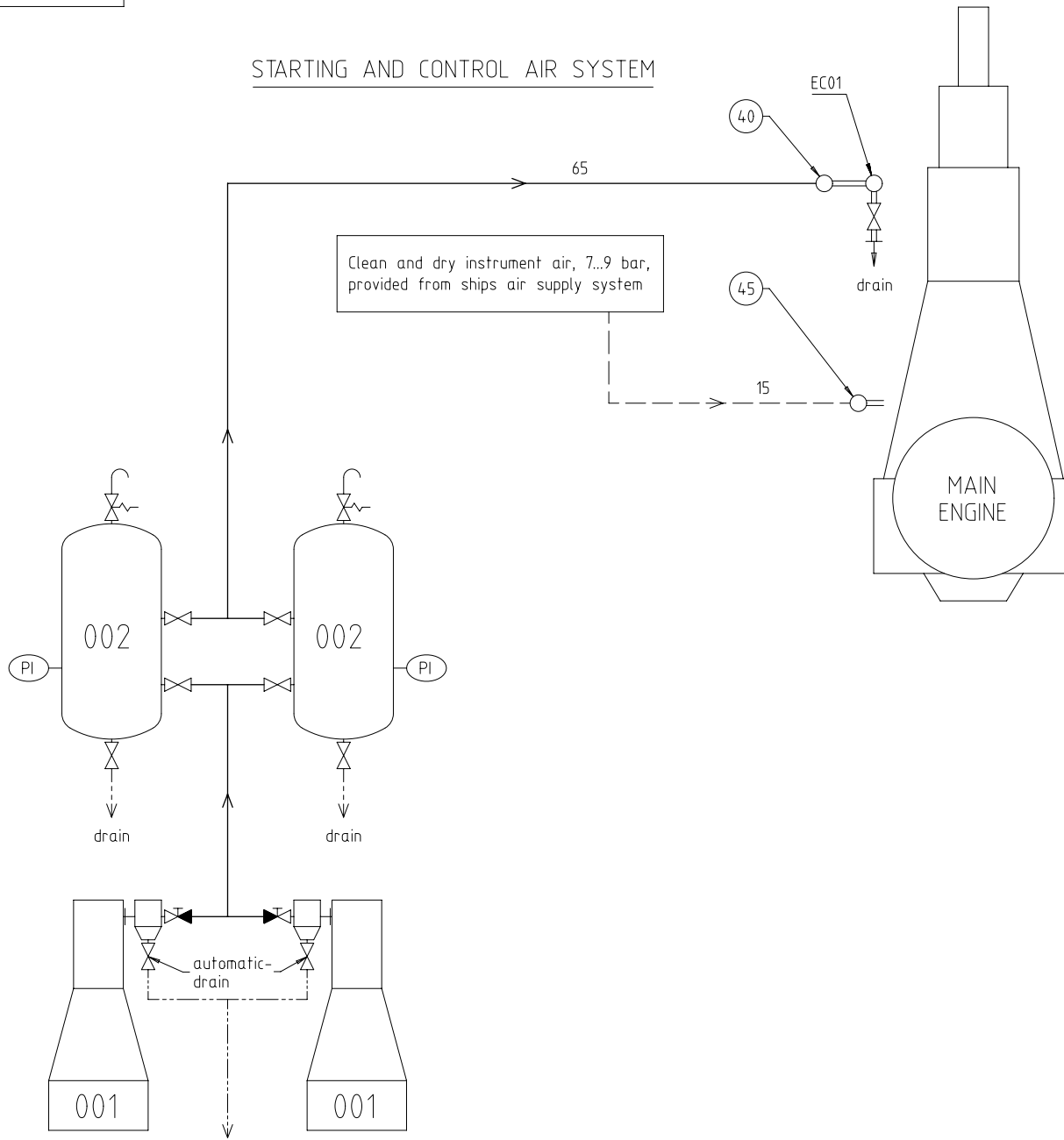


SPECIFICATIONS which must be met	
④0	INLET - Starting air Starting air pressure: 25 or 30 bar (according to design) Capacity of starting air receivers: according to GTD
④5	INLET - Control air Control air pressure: 7-9 bar Control air quality has to be comply with the compressed air purity class: 2-4-2 according to ISO 8573-1 (2010-04-15)

Free space for lic.							Q-Code XXXXXX	Main Drw. H
							Standard ISO; JIS	
Modif.	○		○		○		○	
	Number	Drawn date	Number	Drawn date	Number	Drawn date	Number	Drawn date
WIN GD Winterthur Gas & Diesel		Product W5-8X40DF		STARTING AIR SYSTEM Anlassluftsystem				
Units	mm kg	NX		Basic Material		Net Weight		
SURFACE PROTECTION SEE GROUP 0344		Made	02.07.2019 Sudant Deogade		Scale	-		
TOLERANCING PRINCIPLE ISO8015		Chkd	06.09.2019 cku010 Claudio		Design Group	A3 1/2		Material ID
GENERAL TOLERANCES ACCORDING TO ISO2768-mK		Appd	06.09.2019 mhu019 Hug		9725	Drawing ID	DAAD118361	
						Rev.	-	

SYSTEM PROPOSAL

STARTING AND CONTROL AIR SYSTEM



Pos.	System Components *1)
001	Starting air compressor 25/30 bar (capacity according to GTD)
002	Starting air receiver 25/30 bar (capacity according to GTD)

Pos.	Engine Connections *2)
④0	INLET - Starting air
④5	INLET - Control air (for control system and air spring)

Pos.	Engine Components *3)
EC01	Distribution pipe with automatic starting air shut-off valve

Remarks:-

- Drain plugs and drain cocks to be installed where necessary.
- Pipe diameters for starting air compressors and auxiliary equipment according to suppliers recommendations.

*1) Refer to the "Pipe Connection Plan" for the execution and location of the engine pipe connections.

*2) To be delivered by external supplier and to be installed by the shipyard.

*3) To be delivered by the engine builder. i.e. already equipped on engine side.

- Starting air feed pipes
- - - Control air pipes
- Ancillary equipment pipes
- · - · - · Drain pipes
- == Pipes on engine
- Pipe connections

Free space for ill.	Q-Code XXXXXX				Main Drw. H							
	Standard ISO; JIS											
Modif.	Number	Drawn date	Number	Drawn date	Number	Drawn date	Number	Drawn date				
		Product W5-8X40DF	STARTING AIR SYSTEM Anlassluftsystem									
Units	mm kg	NX	Basic Material		Net Weight							
SURFACE PROTECTION SEE GROUP 034.4		Made	02.07.2019	Sudant Deogade	Scale	-	Size	A2	Page	2/2	Material ID	
TOLERANCING PRINCIPLE ISO8015		Chkd	06.09.2019	cku010 Claudio	Design Group							
GENERAL TOLERANCES ACCORDING TO ISO2768-mK		Appd	06.09.2019	mhu019 Hug	9725	Drawing ID		DAAD118361		Rev.	-	

MIDS – WINGD X40DF – Starting Air System (DG9725)

TRACK CHANGES

DATE	SUBJECT	DESCRIPTION
2019-09-09	DRAWING SET	First web upload

DISCLAIMER

© Copyright by Winterthur Gas & Diesel Ltd.

All rights reserved. No part of this document may be reproduced or copied in any form or by any means (electronic, mechanical, graphic, photocopying, recording, taping or other information retrieval systems) without the prior written permission of the copyright owner.

THIS PUBLICATION IS DESIGNED TO PROVIDE AN ACCURATE AND AUTHORITATIVE INFORMATION WITH REGARD TO THE SUBJECT-MATTER COVERED AS WAS AVAILABLE AT THE TIME OF PRINTING. HOWEVER, THE PUBLICATION DEALS WITH COMPLICATED TECHNICAL MATTERS SUITED ONLY FOR SPECIALISTS IN THE AREA, AND THE DESIGN OF THE SUBJECT-PRODUCTS IS SUBJECT TO REGULAR IMPROVEMENTS, MODIFICATIONS AND CHANGES. CONSEQUENTLY, THE PUBLISHER AND COPYRIGHT OWNER OF THIS PUBLICATION CAN NOT ACCEPT ANY RESPONSIBILITY OR LIABILITY FOR ANY EVENTUAL ERRORS OR OMISSIONS IN THIS BOOKLET OR FOR DISCREPANCIES ARISING FROM THE FEATURES OF ANY ACTUAL ITEM IN THE RESPECTIVE PRODUCT BEING DIFFERENT FROM THOSE SHOWN IN THIS PUBLICATION. THE PUBLISHER AND COPYRIGHT OWNER SHALL UNDER NO CIRCUMSTANCES BE HELD LIABLE FOR ANY FINANCIAL CONSEQUENTIAL DAMAGES OR OTHER LOSS, OR ANY OTHER DAMAGE OR INJURY, SUFFERED BY ANY PARTY MAKING USE OF THIS PUBLICATION OR THE INFORMATION CONTAINED HEREIN.