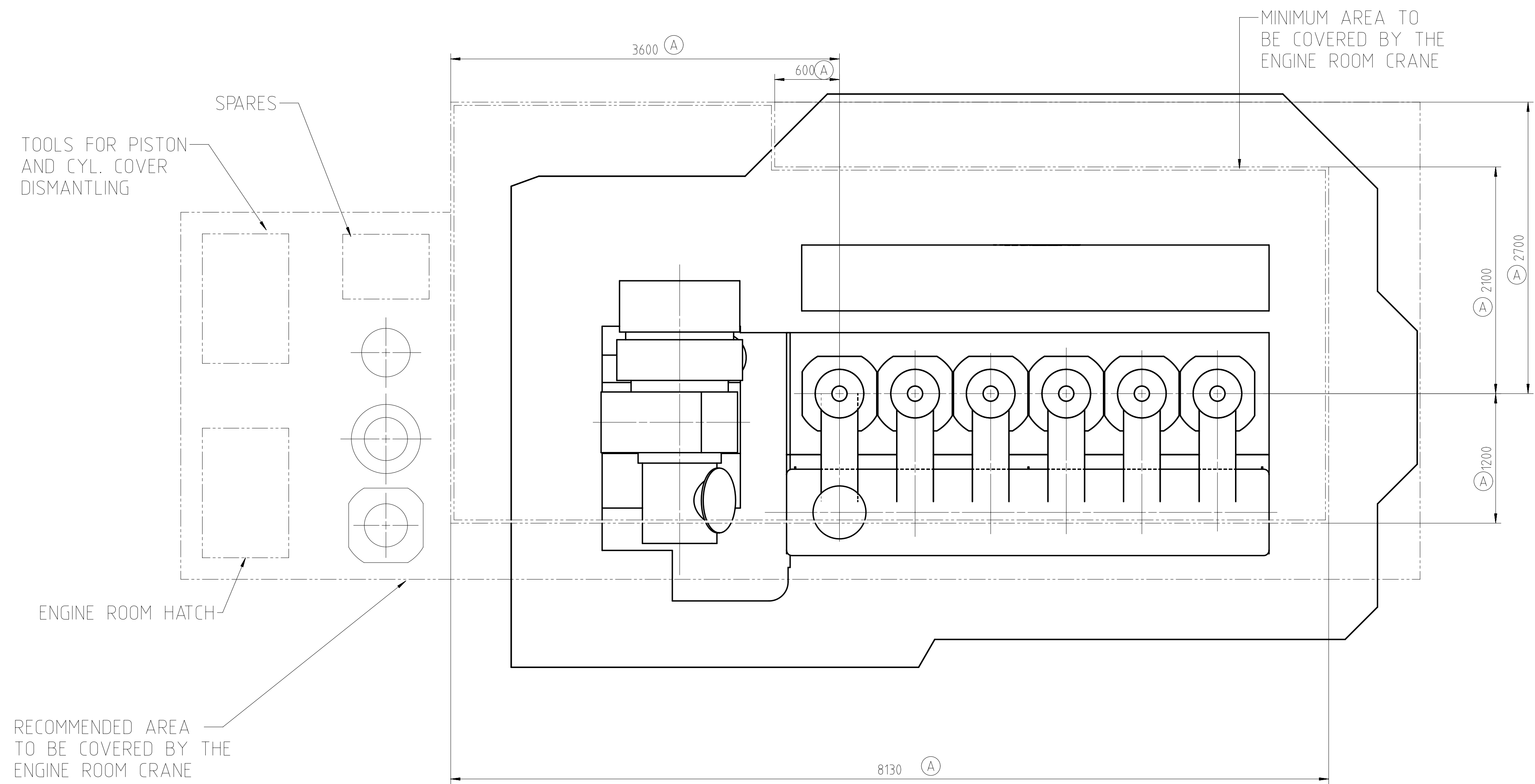
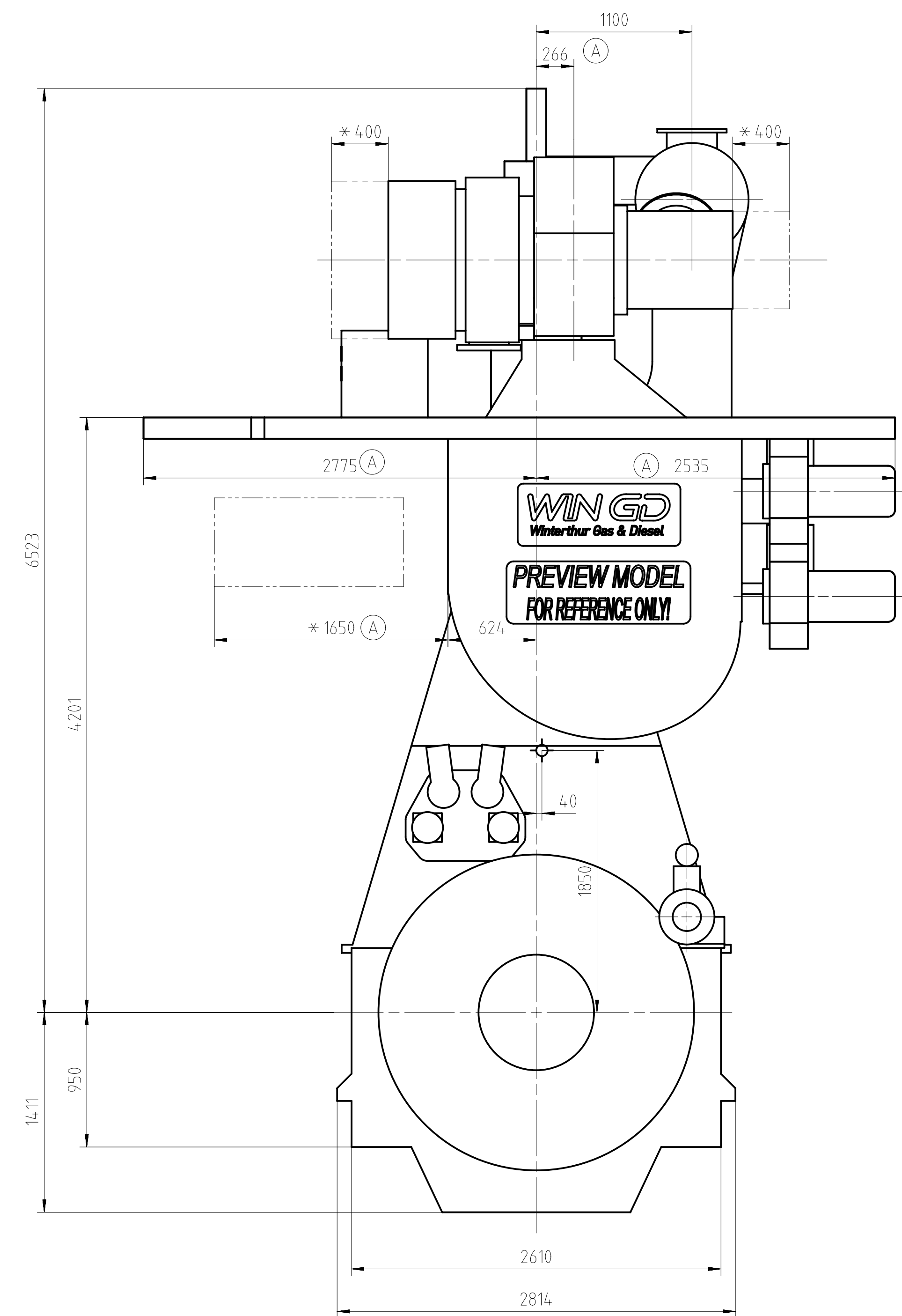
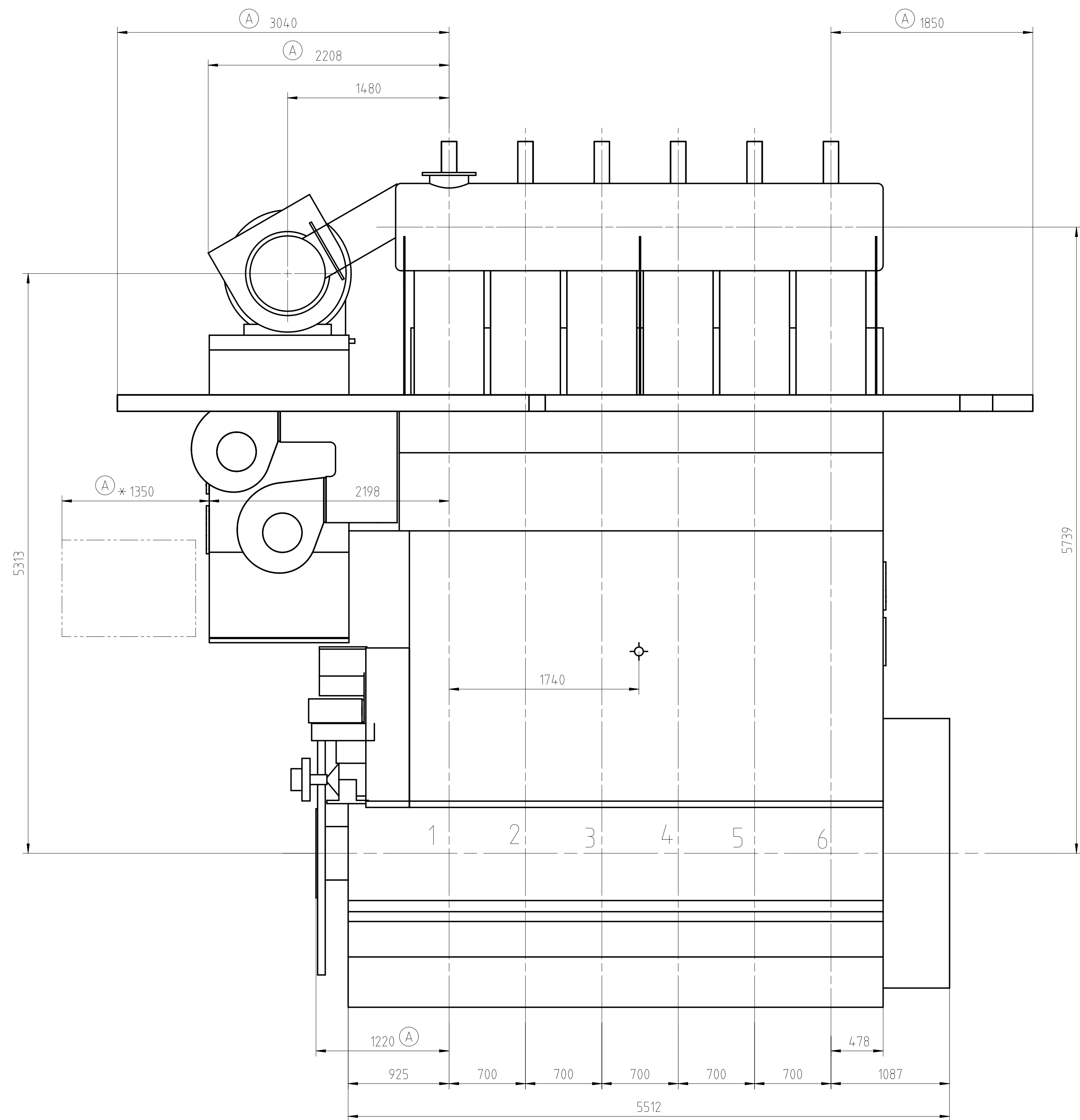


Download
"DXF file"




ca. Schwerpunkt
APPROX. CENTRE OF GRAVITY

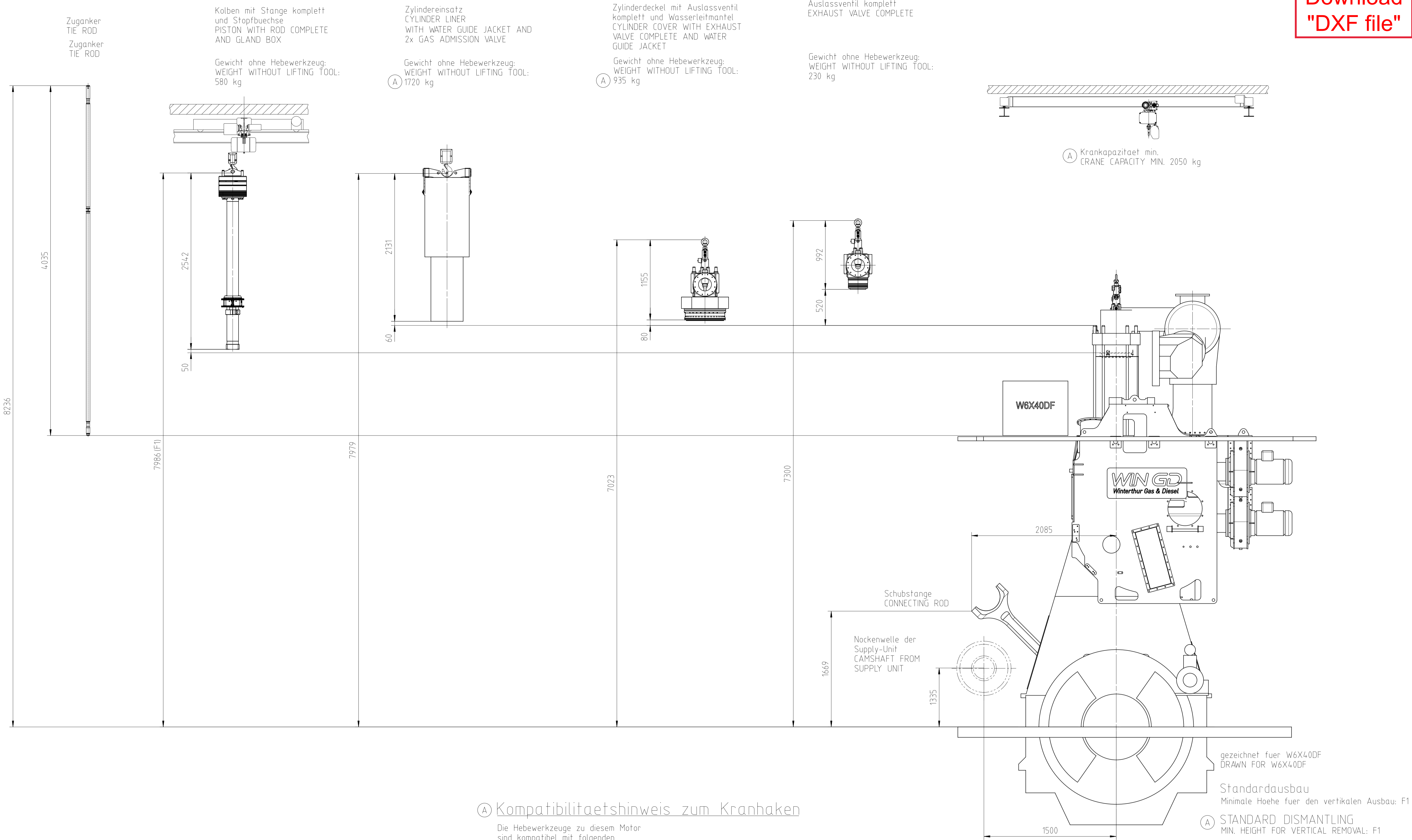
Gewicht ohne Wasser und Oel = 130t
WEIGHT WITHOUT WATER AND OIL

* Platz fuer Demontage
SPACE FOR REMOVAL

TURBOCHARGER 1xA165

DIMENSIONS FOR REFERENCE ONLY!
THIS OUTLINE DRAWING CAN NOT
BE USED FOR THE FINAL DESIGN!
PLEASE TAKE THE CORRESPONDING
DESIGN GROUP!

File, photo, etc.											G-Code XXXXXX	Main Draw H				
											Standard ISO, JIS					
Model	EAAD095877		03.03.2021													
	Number	Drawn date	Number	Drawn date	Number	Drawn date	Number	Drawn date	Number	Drawn date	Number	Drawn date				
 Product 6X40DF					ENGINE OUTLINE VIEW											
					Motoranschlitten											
Units	mm kg	NX										Net Weight 0.001				
Model	16.05.2019		1f0015		Fauler		Scale	1:4.0		Size	A0	Page	1/1	Material	Q	PAAD321158
Model	20.05.2019		cku010		Claudio		Design	Group		Draining	Q		DAAD113033	Rev.	A	
App	22.05.2019		mds006		Dadic		0812									


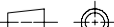


A Kompatibilitaetshinweis zum Kranhaken

Die Hebewerkzeuge zu diesem Motor
sind kompatibel mit folgenden
Kranhaken:
DIN 15401: Form RSN, Hakennummer 0.5 und 1.6

COMPATIBILITY NOTE FOR CRANE HOOK

THE LIFTING TOOLS FOR THIS ENGINE
ARE COMPATIBLE WITH FOLLOWING
CRANE HOOK:
DIN 15401: SHAPE RSN, HOOK NUMBER 0.5 AND 1.6

Free space for file		0-Code XXXXXX Standard ISO; JIS				Main Dw. H	
Modif.	A	EAAD091495	19.06.2020				
	Number	Drawn date	Number	Drawn date	Number	Drawn date	Number
Product W-X40DF CX40DF		DISMANTL. DIMENSION PISTON/LINER Ausbaumasse Kolben/Zyl.einsatz					
							
Units	mm kg	NX				Basic Material	
SURFACE PROTECTION SEE GROUP 0344		Made	27.05.2019	Ravindra Patil		Scale	1:50
TOLERANCING PRINCIPLE ISO8015		Chkd	28.08.2019	psi026 Sieber		Design Group	
GENERAL TOLERANCES ACCORDING TO ISO2768-mK		Appd	28.08.2019	mda006 Dacic		Size	A1
						Page	1/2
						Material ID	PAAD318453
						Drawing ID	DAAD111973
						Rev.	A



- Twin Tie Rod for replacement
Zuganker



Zylindereinsatz- und die Kolbenhebevorrichtung
ist auf die Lasthaken Nr. 04 to 08, gemäss DIN 15401, abgestimmt
LAYOUT FOR CYLINDER LINER- / AND PISTON LIFTING TOOL
IS FITTING WITH LOAD HOOK NO. 04 TO 08, ACCORDING DIN-NORM 15401

WinGD – 6X40DF-1.0_Engine Outline View

TRACK CHANGES

DATE	SUBJECT	DESCRIPTION
2020-09-15	DRAWING SET	First web upload
2021-06-07	PAAD321158	Revised Engine Outline View for Turbocharger type 1xA165 has been updated.

DISCLAIMER

© Copyright by Winterthur Gas & Diesel Ltd.

All rights reserved. No part of this document may be reproduced or copied in any form or by any means (electronic, mechanical, graphic, photocopying, recording, taping or other information retrieval systems) without the prior written permission of the copyright owner.

THIS PUBLICATION IS DESIGNED TO PROVIDE AN ACCURATE AND AUTHORITATIVE INFORMATION WITH REGARD TO THE SUBJECT-MATTER COVERED AS WAS AVAILABLE AT THE TIME OF PRINTING. HOWEVER, THE PUBLICATION DEALS WITH COMPLICATED TECHNICAL MATTERS SUITED ONLY FOR SPECIALISTS IN THE AREA, AND THE DESIGN OF THE SUBJECT-PRODUCTS IS SUBJECT TO REGULAR IMPROVEMENTS, MODIFICATIONS AND CHANGES. CONSEQUENTLY, THE PUBLISHER AND COPYRIGHT OWNER OF THIS PUBLICATION CAN NOT ACCEPT ANY RESPONSIBILITY OR LIABILITY FOR ANY EVENTUAL ERRORS OR OMISSIONS IN THIS BOOKLET OR FOR DISCREPANCIES ARISING FROM THE FEATURES OF ANY ACTUAL ITEM IN THE RESPECTIVE PRODUCT BEING DIFFERENT FROM THOSE SHOWN IN THIS PUBLICATION. THE PUBLISHER AND COPYRIGHT OWNER SHALL UNDER NO CIRCUMSTANCES BE HELD LIABLE FOR ANY FINANCIAL CONSEQUENTIAL DAMAGES OR OTHER LOSS, OR ANY OTHER DAMAGE OR INJURY, SUFFERED BY ANY PARTY MAKING USE OF THIS PUBLICATION OR THE INFORMATION CONTAINED HEREIN.