

(A)

SPECIFICATIONS which must be met

(40)

INLET - Starting air

Starting air pressure: 25 or 30 bar (according to design)
Capacity of starting air receivers: according to GTD

(45)

INLET - Control air

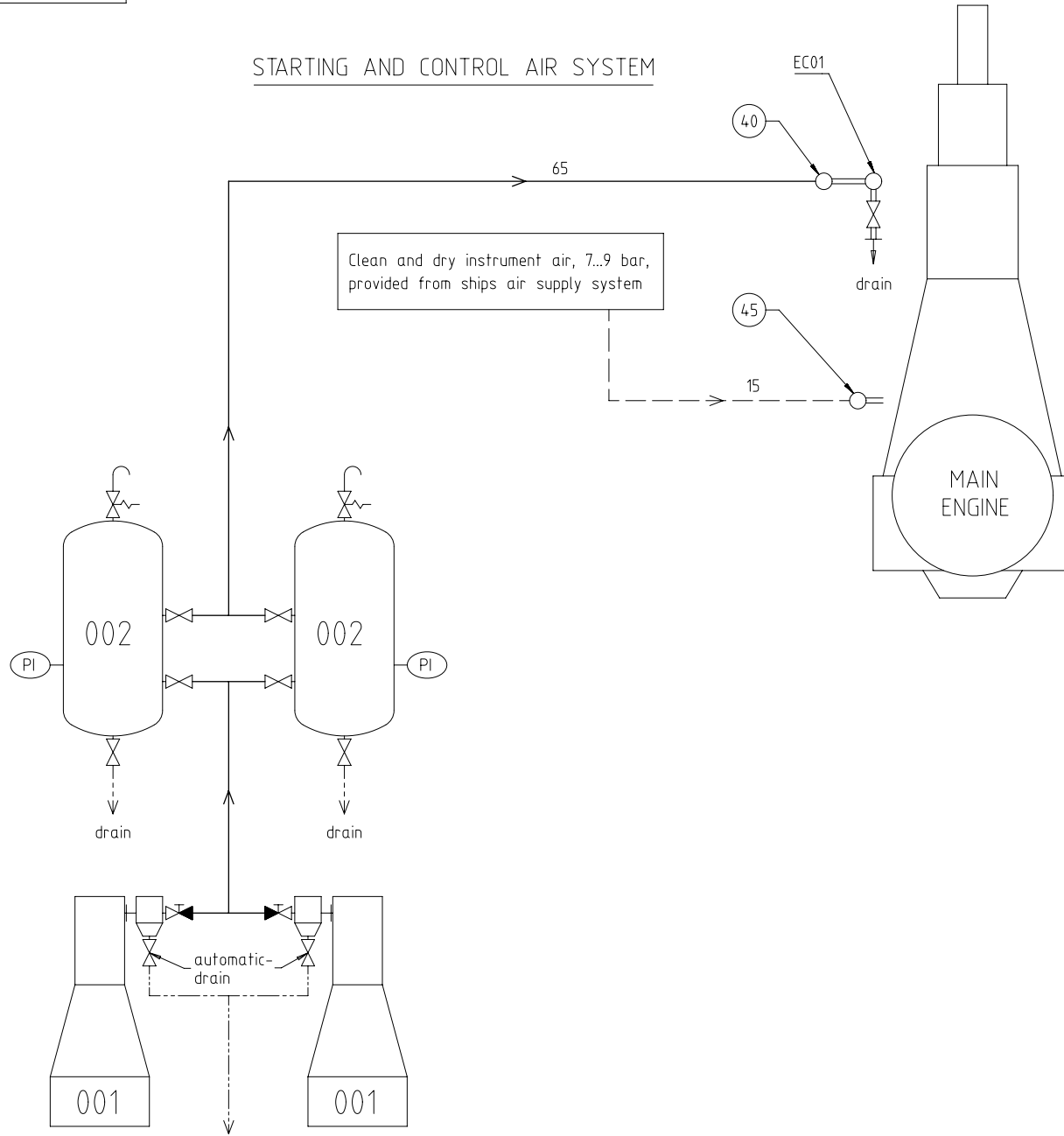
Control air pressure: 7-9 bar
Control air quality has to be comply
with the compressed air purity class: 2-4-2
according to ISO 8573-1 (2010-04-15)

Free space for lic.								Q-Code XXXXXX	Main Drw. H	
								Standard ISO; JIS		
Modif.	(A)	EAAD090092	08.11.2018							
		Number	Drawn date		Number	Drawn date		Number	Drawn date	
		Product W5-8X40-B		STARTING AIR SYSTEM						
				Anlassluftsystem						
Units	mm kg	NX		Basic Material		Net Weight 0,001				
SURFACE PROTECTION SEE GROUP 0344		Made	15.09.2011	lmux02 L.Müller		Scale	-	Size	A3	
TOLERANCING PRINCIPLE ISO8015		Chkd	04.10.2011	wwr001 Wroblewski		Design Group	9725		Page	1/2
GENERAL TOLERANCES ACCORDING TO ISO2768-mK		Appd	04.10.2011	dst009 Strödecke		Material ID	PAAD060476		Material ID	DAAD020508
						Rev.	A			

Approved

2D - DIMENSIONAL DRAWING - Confidential

STARTING AND CONTROL AIR SYSTEM



Pos.	System Components *1)
001	Starting air compressor 25/30 bar (capacity according to GTD)
002	Starting air receiver 25/30 bar (capacity according to GTD)

Pos.	Engine Connections *2)
④0	INLET - Starting air
④5	INLET - Control air (for control system and air spring)

Pos.	Engine Components *3)
EC01	Distribution pipe with automatic starting air shut-off valve

- Remarks:
- Drain plugs and drain cocks to be installed where necessary.
 - Pipe diameters for starting air compressors and auxiliary equipment according to suppliers recommendations.
 - *1) Refer to the "Pipe Connection Plan" for the execution and location of the engine pipe connections.
 - *2) To be delivered by external supplier and to be installed by the shipyard.
 - *3) To be delivered by the engine builder. i.e. already equipped on engine side.
- Starting air feed pipes
 - - - Control air pipes
 — Ancillary equipment pipes
 - - - - - Drain pipes
 = = = Pipes on engine
 ○ Pipe connections

Free space for ILC	Q-Code XXXXXX				Main Drw. H
	Standard ISO; JIS				
Modif.	EAAD090092	08.11.2018			
Number	Drawn date	Number	Drawn date	Number	Drawn date
		Product W5-8X40-B	STARTING AIR SYSTEM Anlassluftsystem		
Units	mm kg	NX	Basic Material	Net Weight 0,001	
SURFACE PROTECTION SEE GROUP 034.4		Made	15.09.2011	Imux02	L.Müller
TOLERANCING PRINCIPLE ISO8015		Chkd	04.10.2011	wwr001	Wrablewski
GENERAL TOLERANCES ACCORDING TO ISO2768-mK		Appd	04.10.2011	dst009	Strödecke
		Scale	-	Size	A2
		Page	2/2	Material	PAAD060476
		Design Group	9725	Drawing ID	DAAD020508
		Rev.	A		

MIDS – WINGD X40-B – Starting Air System (DG9725)

TRACK CHANGES

DATE	SUBJECT	DESCRIPTION
2017-02-20	DRAWING SET	First web upload
2019-01-15	DAAD020508	System drawing - new revision

DISCLAIMER

© Copyright by Winterthur Gas & Diesel Ltd.

All rights reserved. No part of this document may be reproduced or copied in any form or by any means (electronic, mechanical, graphic, photocopying, recording, taping or other information retrieval systems) without the prior written permission of the copyright owner.

THIS PUBLICATION IS DESIGNED TO PROVIDE AN ACCURATE AND AUTHORITATIVE INFORMATION WITH REGARD TO THE SUBJECT-MATTER COVERED AS WAS AVAILABLE AT THE TIME OF PRINTING. HOWEVER, THE PUBLICATION DEALS WITH COMPLICATED TECHNICAL MATTERS SUITED ONLY FOR SPECIALISTS IN THE AREA, AND THE DESIGN OF THE SUBJECT-PRODUCTS IS SUBJECT TO REGULAR IMPROVEMENTS, MODIFICATIONS AND CHANGES. CONSEQUENTLY, THE PUBLISHER AND COPYRIGHT OWNER OF THIS PUBLICATION CAN NOT ACCEPT ANY RESPONSIBILITY OR LIABILITY FOR ANY EVENTUAL ERRORS OR OMISSIONS IN THIS BOOKLET OR FOR DISCREPANCIES ARISING FROM THE FEATURES OF ANY ACTUAL ITEM IN THE RESPECTIVE PRODUCT BEING DIFFERENT FROM THOSE SHOWN IN THIS PUBLICATION. THE PUBLISHER AND COPYRIGHT OWNER SHALL UNDER NO CIRCUMSTANCES BE HELD LIABLE FOR ANY FINANCIAL CONSEQUENTIAL DAMAGES OR OTHER LOSS, OR ANY OTHER DAMAGE OR INJURY, SUFFERED BY ANY PARTY MAKING USE OF THIS PUBLICATION OR THE INFORMATION CONTAINED HEREIN.