

ca. Schwerpunkt
APPROX. CENTRE OF GRAVITY

Gewicht ohne Wasser und Öl= 125 t
WEIGHT WITHOUT WATER AND OIL

* Platz fuer Demontage
SPACE FOR REMOVAL

TURBOCHARGER A165

Net Weight	0.001
1	001
PER ENGINE	PAAD212239
Material ID	Material Name
Dimension/Qty/Dimension	Standard or Drawing
Basic Material	Basic Material
Material Standard	Material Standard
ISO Code	XXXXX
Standard	ISO
Material ID	PAAD211940
Free space for E.C.	
Number	Drawn date
Number	Drawn date
Number	Drawn date
Number	Drawn date

WIN GÖ
Winterthur Gas & Diesel

Product: W6X40-B

ENGINE OUTLINE VIEW
Motoransichten

Units: mm kg IDE

Scale: 1:33

Size: A1

Page: 1/1

Material ID: DAAD072613

Rev: -

SURFACE PROTECTION SEE GROUP 0344

TOLERANCING PRINCIPLE ISO8015

GENERAL TOLERANCES ACCORDING TO ISO2768-mK

Mod: 12.11.2015 ihe003 Ivan HERCEG

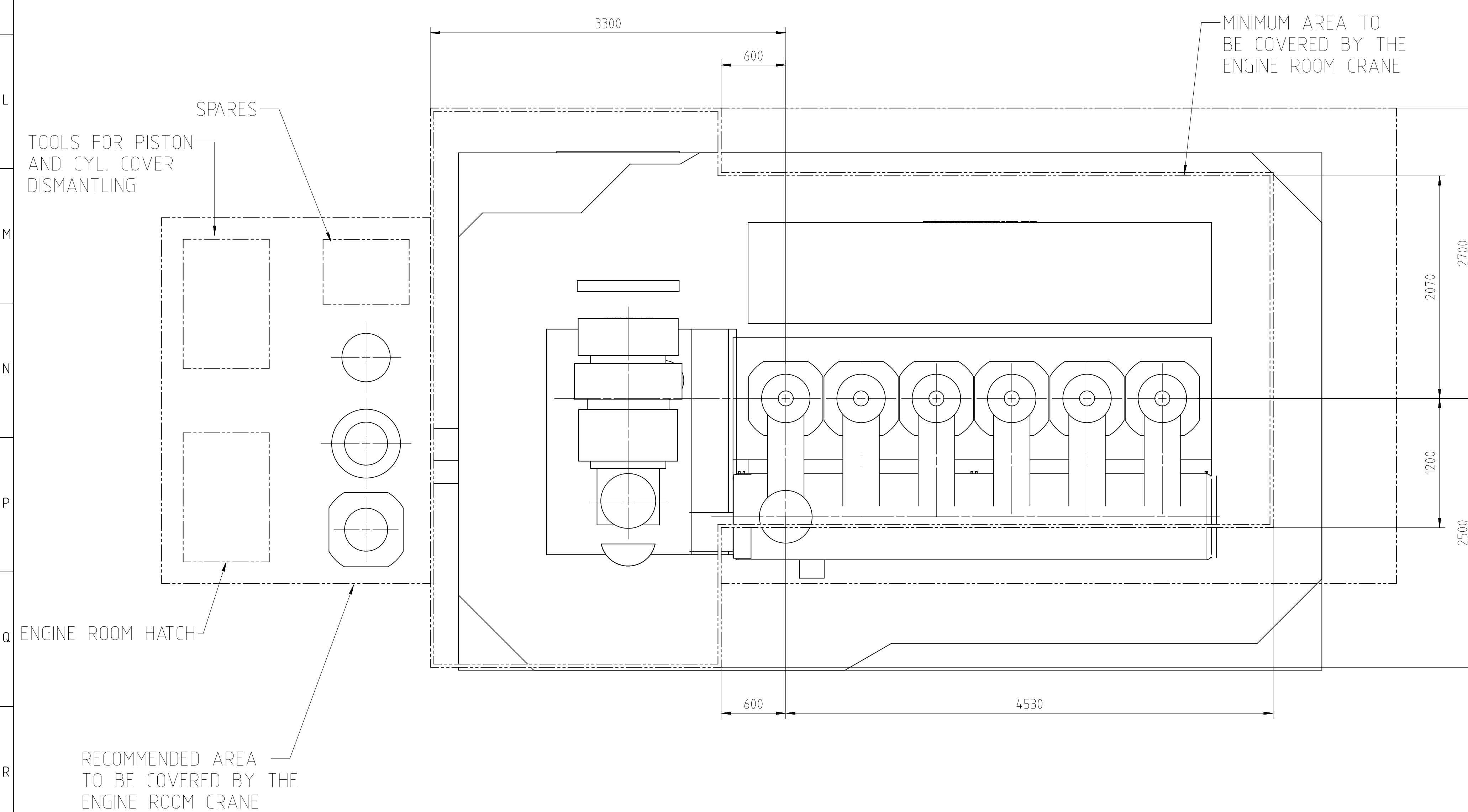
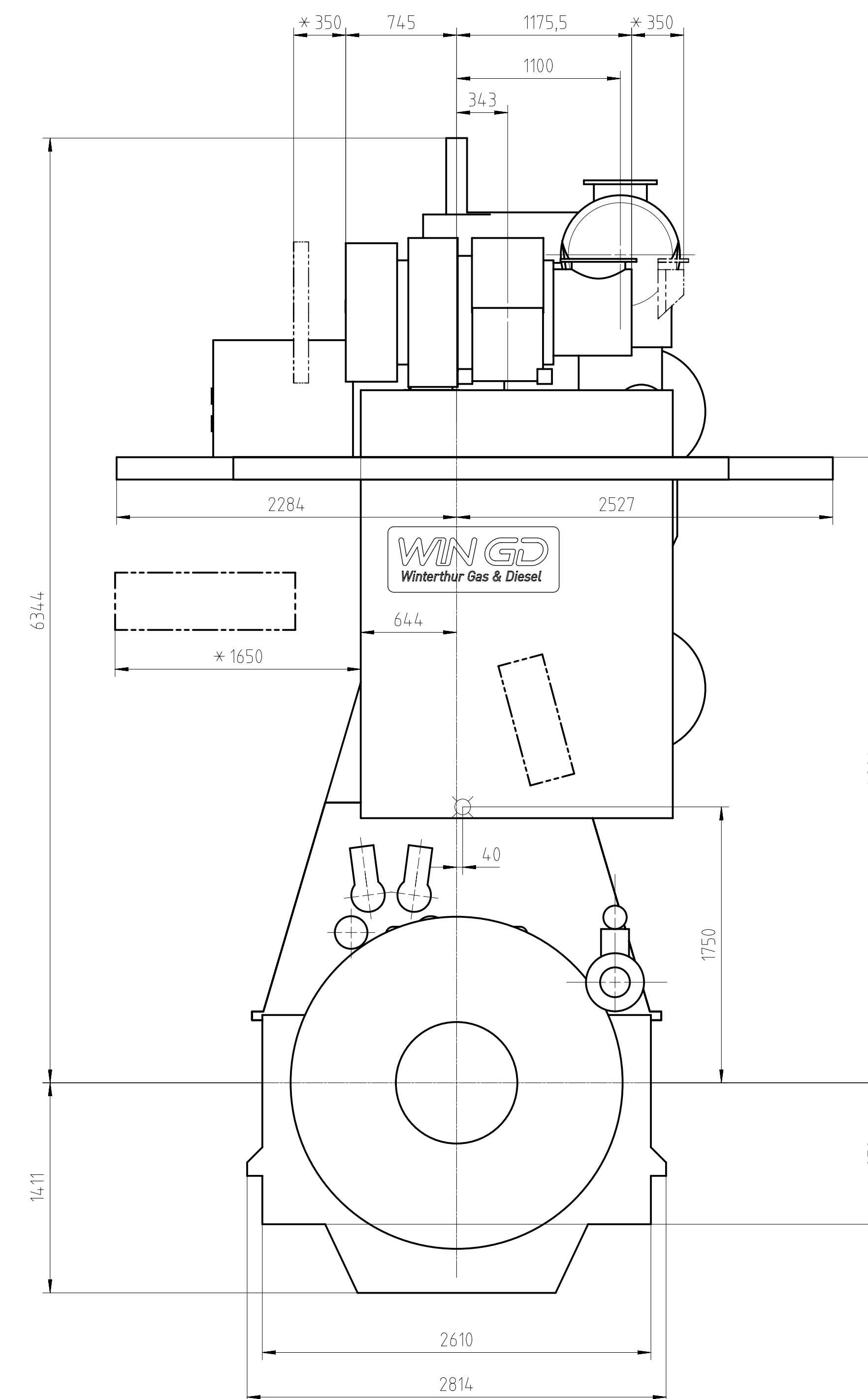
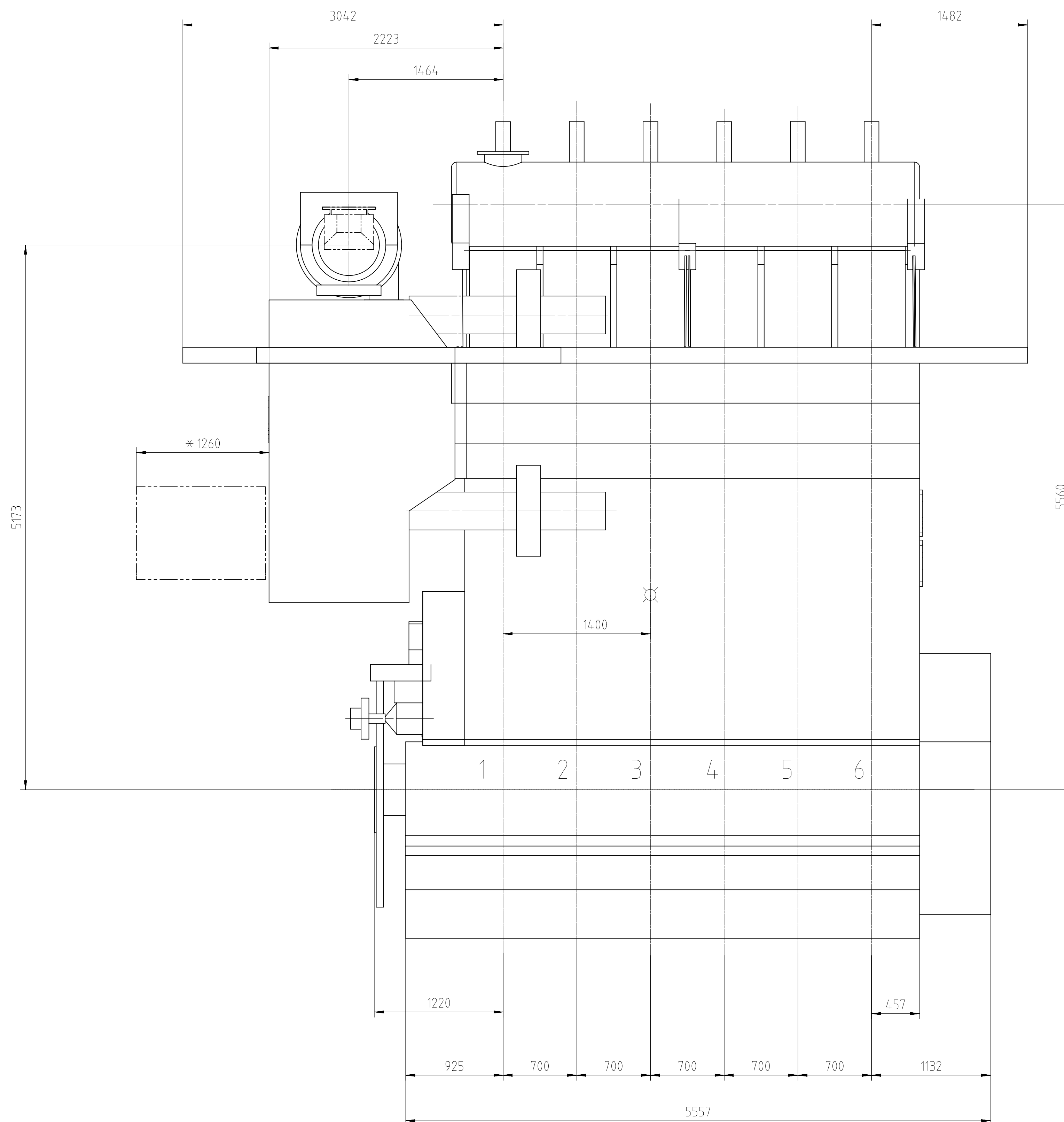
Chk: 19.11.2015 hdo002 Doerre

App: 19.11.2015 bho009 Haag



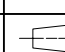
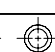
Design Group: 0812

Drawing ID: DAAD072613

Download
"DXF file"



DIMENSIONS FOR REFERENCE ONLY!
THIS OUTLINE DRAWING CAN NOT
BE USED FOR THE FINAL DESIGN!
PLEASE TAKE THE CORRESPONDING
DESIGN GROUP!

		ca. Schwerpunkt APPROX. CENTRE OF GRAVITY										
Gewicht ohne Wasser und Oel = 1251 WEIGHT WITHOUT WATER AND OIL												
* Platz fuer Demontage SPACE FOR REMOVAL												
TURBOCHARGER 1x255												
0,001												
1	00A	DAAD212239	DISMANTLING DIMENSIONS	DAAD072736		0,00						
PARTS ENGINE	SEQ No	Material ID	Material Name	Dimension, Dct	Standard or Drawing	Basic Material Material Standard	Weight Gg Net					
REFERENCE	Free space 0					G-Code XXXXXX Standard ISO, JIS	Main Drw. H					
	Model	Number	Drawn date	Number	Drawn date	Number	Drawn date					
Product W6X4-0-B				ENGINE OUTLINE VIEW Motoransichten								
 Winderthur Gas & Diesel												
Units	mm kg	NX	 	Basic Material	Scale	1:4,0	Size	Page	1/1	Material	D	Net Weight
Made	10.03.2020	ihc01 Lavancia						A0				
Chd	10.03.2020	ihc003 Hergoag		Design Group								
Appd	10.03.2020	sh017 Thalmann			0812					DAAD127256		Rev.
ISO20768-nK												

Kolben mit Stange komplett
und Stopfbuechse
PISTON WITH ROD COMPLETE
AND GLAND BOX

Ⓐ 560 kg

Zylindereinsatz mit Wasserleitmantel
CYLINDER LINER WITH WATER GUIDE JACKET

Gewicht ohne Hebevorrichtung:
WEIGHT WITHOUT LIFTING TOOL:

Ⓐ 1160 kg

Zylinderdeckel mit Auslassventil
komplett und Wasserleitmantel
CYLINDER COVER WITH EXHAUST
VALVE COMPLETE AND WATER
GUIDE JACKET

Gewicht ohne Hebevorrichtung:
WEIGHT WITHOUT LIFTING TOOL:

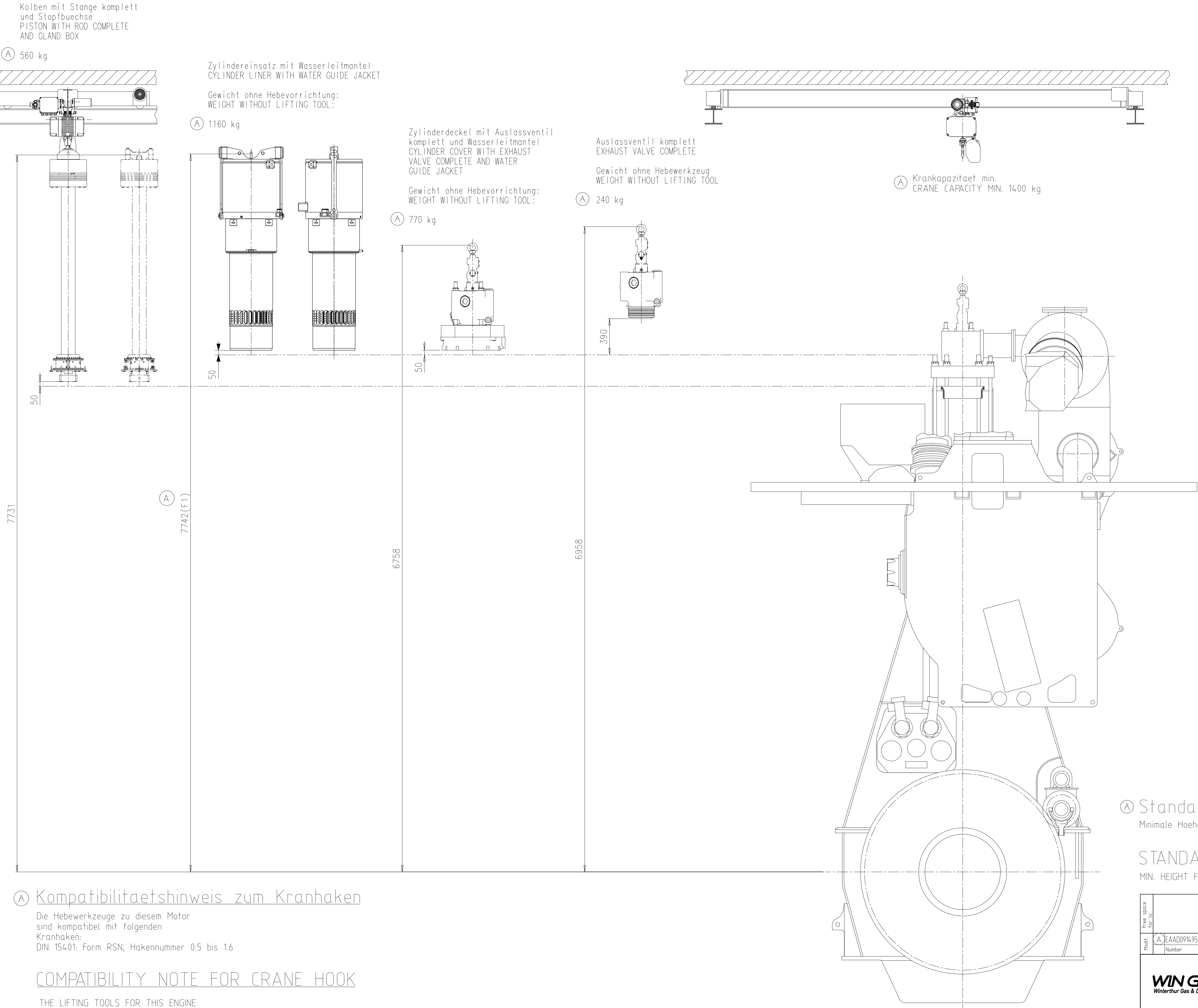
Ⓐ 770 kg

Auslassventil komplett
EXHAUST VALVE COMPLETE

Gewicht ohne Hebewerkzeug
WEIGHT WITHOUT LIFTING TOOL

Ⓐ 240 kg

Ⓐ Krankapazitaet min.
CRANE CAPACITY MIN. 1400 kg



Ⓐ Kompatibilitaetshinweis zum Kranhaken

Die Hebewerkzeuge zu diesem Motor
sind kompatibel mit folgenden
Kranhaken:
DIN 15401: Form RSN, Hakennummer 0.5 bis 1.6

COMPATIBILITY NOTE FOR CRANE HOOK

THE LIFTING TOOLS FOR THIS ENGINE
ARE COMPATIBLE WITH FOLLOWING
CRANE HOOK:
DIN 15401: SHAPE RSN, HOOK NUMBER 0.5 TO 1.6

Ⓐ Standardausbau

Minimale Hoehe fuer den vertikalen Ausbau: F1

STANDARD DISMANTLING

MIN. HEIGHT FOR VERTICAL REMOVAL: F1

Free space for l.c.		D-Code XXXXXX Standard ISO, JIS		Main Drw.	
Modif.	Ⓐ	EAAD091495	17.06.2020		
Number					
Drawn date					
Product	X40-B		DISMANTLING DIMENSIONS		
Units		mm kg	NX	Basic Material	
Made		19.11.2015	mda006	Scale 1:20	
Chkd		19.11.2015	abo011	Design Group	
Appd		19.11.2015	bha009	Drawing ID	
Size		A1	Page 1/1	Material ID	
Net Weight		0,001		PAAD212239	
Rev.		A		DAAD072736	

WinGD-6X40-B_Engine-outline-views

TRACK CHANGES

DATE	SUBJECT	DESCRIPTION
2018-02-26	DRAWING SET	First web upload
2020-07-20	DAAD127256 DAAD072736	Engine Outline views for Turbocharger type 1xA255 has been added. Revised Dismantling Dimensions drawing has been updated.

DISCLAIMER

© Copyright by Winterthur Gas & Diesel Ltd.

All rights reserved. No part of this document may be reproduced or copied in any form or by any means (electronic, mechanical, graphic, photocopying, recording, taping or other information retrieval systems) without the prior written permission of the copyright owner.

THIS PUBLICATION IS DESIGNED TO PROVIDE AN ACCURATE AND AUTHORITATIVE INFORMATION WITH REGARD TO THE SUBJECT-MATTER COVERED AS WAS AVAILABLE AT THE TIME OF PRINTING. HOWEVER, THE PUBLICATION DEALS WITH COMPLICATED TECHNICAL MATTERS SUITED ONLY FOR SPECIALISTS IN THE AREA, AND THE DESIGN OF THE SUBJECT-PRODUCTS IS SUBJECT TO REGULAR IMPROVEMENTS, MODIFICATIONS AND CHANGES. CONSEQUENTLY, THE PUBLISHER AND COPYRIGHT OWNER OF THIS PUBLICATION CAN NOT ACCEPT ANY RESPONSIBILITY OR LIABILITY FOR ANY EVENTUAL ERRORS OR OMISSIONS IN THIS BOOKLET OR FOR DISCREPANCIES ARISING FROM THE FEATURES OF ANY ACTUAL ITEM IN THE RESPECTIVE PRODUCT BEING DIFFERENT FROM THOSE SHOWN IN THIS PUBLICATION. THE PUBLISHER AND COPYRIGHT OWNER SHALL UNDER NO CIRCUMSTANCES BE HELD LIABLE FOR ANY FINANCIAL CONSEQUENTIAL DAMAGES OR OTHER LOSS, OR ANY OTHER DAMAGE OR INJURY, SUFFERED BY ANY PARTY MAKING USE OF THIS PUBLICATION OR THE INFORMATION CONTAINED HEREIN.