

A Coupling bolts have to be mounted from the aft side.

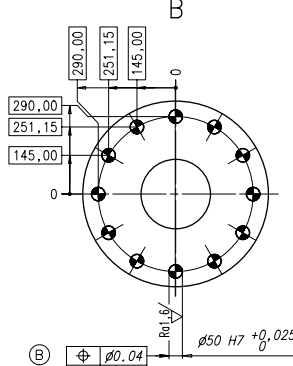
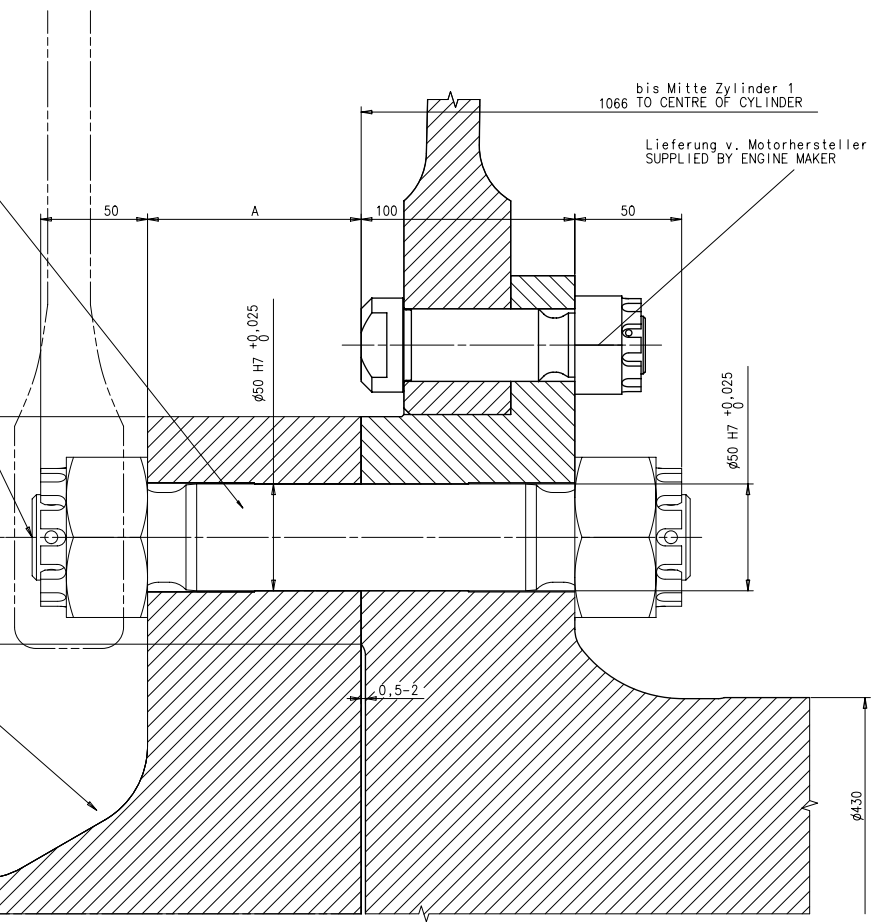
Angaben fuer das Anziehen siehe Konstruktionsgruppe 0352  
 INSTRUCTION FOR TIGHTENING SEE GROUP 0352

M	36° (2320Nm)
---	--------------

Bei jedem Motor muessen insgesamt 12 Bolzen montiert werden.  
 Lieferung Werft.

ALL TOGETHER 12 BOLTS HAVE TO BE FITTED ON EACH ENGINE.  
 SUPPLY BY SHIPYARD.

Angaben nach Werft INFORMATION ACCORDING TO SHIPYARD



\* THIS TABLE REFERS TO DIN EN 10204-(2004). \*TYPES OF INSPECTION DOCUMENTS\*

LISTED ARE THE MOST STRINGENT CERTIFICATION REQUIREMENTS  
 ACTUAL REQUIREMENTS MUST BE AGREED WITH THE APPROPRIATE CLASSIFICATION SOCIETY

TEST TYPE	CERTIFICATE TYPE	TESTING FREQUENCY
CHEMICAL ANALYSIS	CLASSIFICATION CERTIFICATE 3.2 *	TEST PER ORDER LOT OR PER CHARGE, IF SEVERAL CHARGES
TENSILE TEST	CLASSIFICATION CERTIFICATE 3.2 *	TEST PER ORDER LOT OR PER CHARGE, IF SEVERAL CHARGES
IMPACT TEST	CLASSIFICATION CERTIFICATE 3.2 *	TEST PER ORDER LOT OR PER CHARGE, IF SEVERAL CHARGES
HARDNESS TEST	INSPECTION CERTIFICATE 3.1 *	EXAMINATION OF EACH PART (INDEPENDENT AUTHORITY)
SURFACE CRACK DETECTION TEST	CLASSIFICATION CERTIFICATE 3.2 *	EXAMINATION OF EACH PART

M	MOLYKOTE PASTE G-n	O	OIL	N	NEVER SEEZ NSBT8	K	NO ADDITIONAL LUBRICATION
	On threads and contact surfaces		On threads and contact surfaces				

1	001	107.427.450.200	MATERIAL AND TEST SPECIFICATION ELASTIC BOLT	107.427.450		0.006	
QTY	SEQ NO	Material ID	Material Name	Dimension/Occ.Dimension	Standard of Drawing	Basic Material Material Standard	Weight Gr./NET
						ISO JIS	
Material: EAAD0R2671 20.04.2011 (A) EAAD0R2621 29.10.2015 (B)							
Free space for Lic.:	1 QXP1				Main Draw.		
Product: WS-BX35 WS-BX35-B CONNECTION CRANK/PROPELLER SHAFT WINDOR Diesel							
Units	mm	kg	IDE	Basic Material		Net Weight	0,001
Mode	09.09.2009	ksu001	Schenk	Scale	1:2,5	Size	A1
Chkd	107.425.724		Design Group	Page	1/1	Material ID	PAAD041461
GENERAL TOLERANCES ACCORDING TO ISO2768-mK	29.10.2015 pne001 Neracher		3114	Drawing ID	107.425.724		Rev.
Copyright Winthor Diesel Ltd. All rights reserved. By taking possession of this drawing the recipient recognizes and honours these rights. Neither the whole nor any part of this drawing may be used in any way for construction, fabrication, marketing or any other purpose nor copied in any way nor made accessible to third parties without the previous written consent of Winthor Diesel Ltd.							