

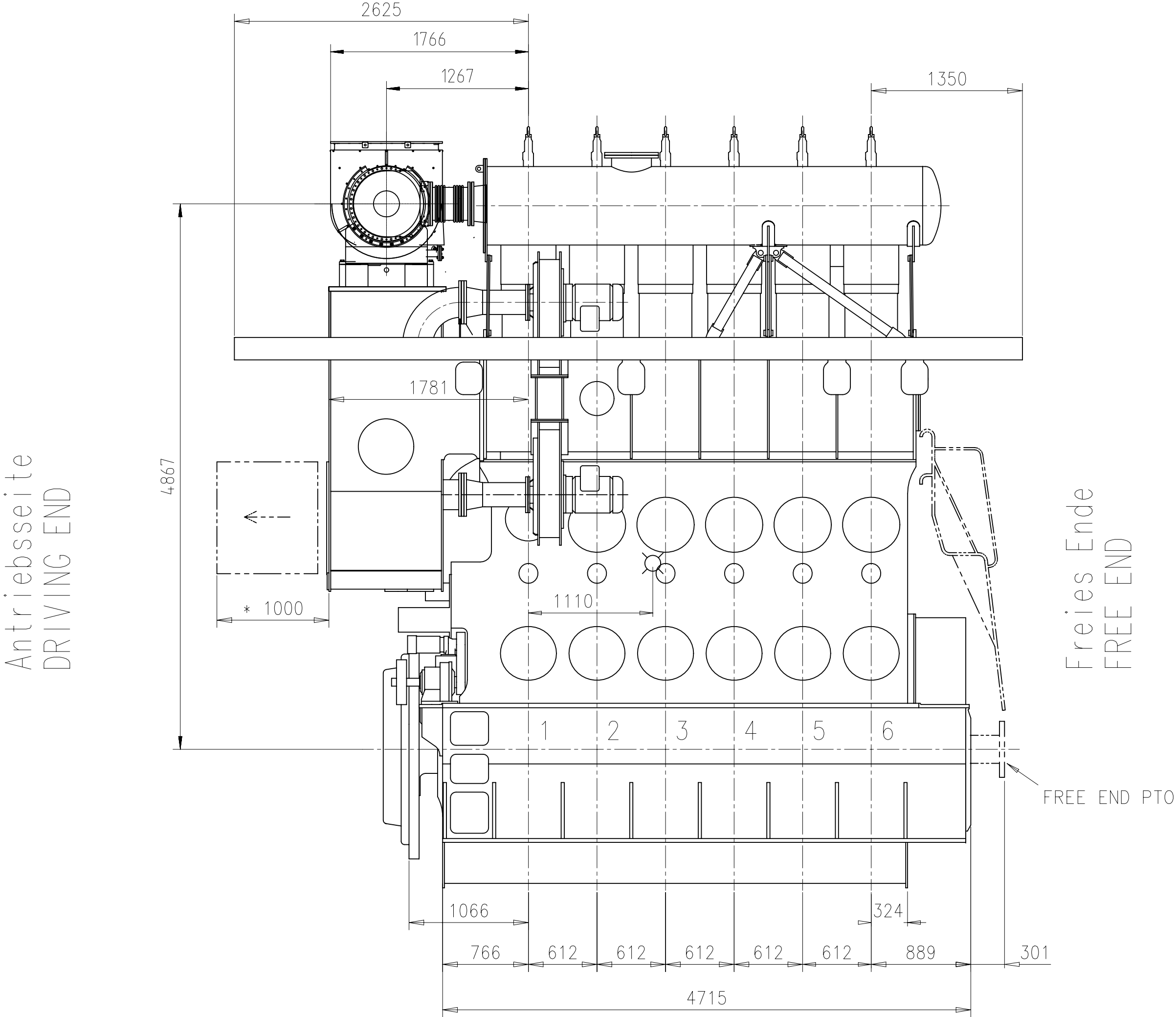


Net Weight		ca. Schwerpunkt APPROX. CENTRE OF GRAVITY													
0.001		Gewicht ohne Wasser und Oel= 84 t WEIGHT WITHOUT WATER AND OIL													
		* Platz fuer Demontage SPACE FOR REMOVAL													
TURBOCHARGER A165-L															
Quantity		1	001	PAAD218274	DISMANTLING DIMENSIONS				DAAD075266		0.001				
PER ENGINE		SEQ NO	Material ID		Material Name				Dimension/Occ. Dimension		Standard or Drawing				
						Basic Material				Material Standard					
PAAD239396		Free space for fig.				Q-Code				Main Drw.					
						XXXXX				H					
						Standard				ISO JIS					
Material ID		Modif.	Number	Drawn date	Number	Drawn date	Number	Drawn date	Number	Drawn date					
 Winterthur Gas & Diesel			Product W6X35-B			ENGINE OUTLINE VIEW Motoransichten									
Units		mm kg	IDE				Basic Material		Net Weight						
UP 0344	Mode	12.09.2016		ihe003 Ivan HERCEG		Scale		1:1		Size	A1	Page	1/1	Material ID	
015	Chkd	28.11.2016		hdo002 Dörre		Design Group		0812		Drawing ID	DAAD081945			Rev.	-
NG TO ISO2768-mK															

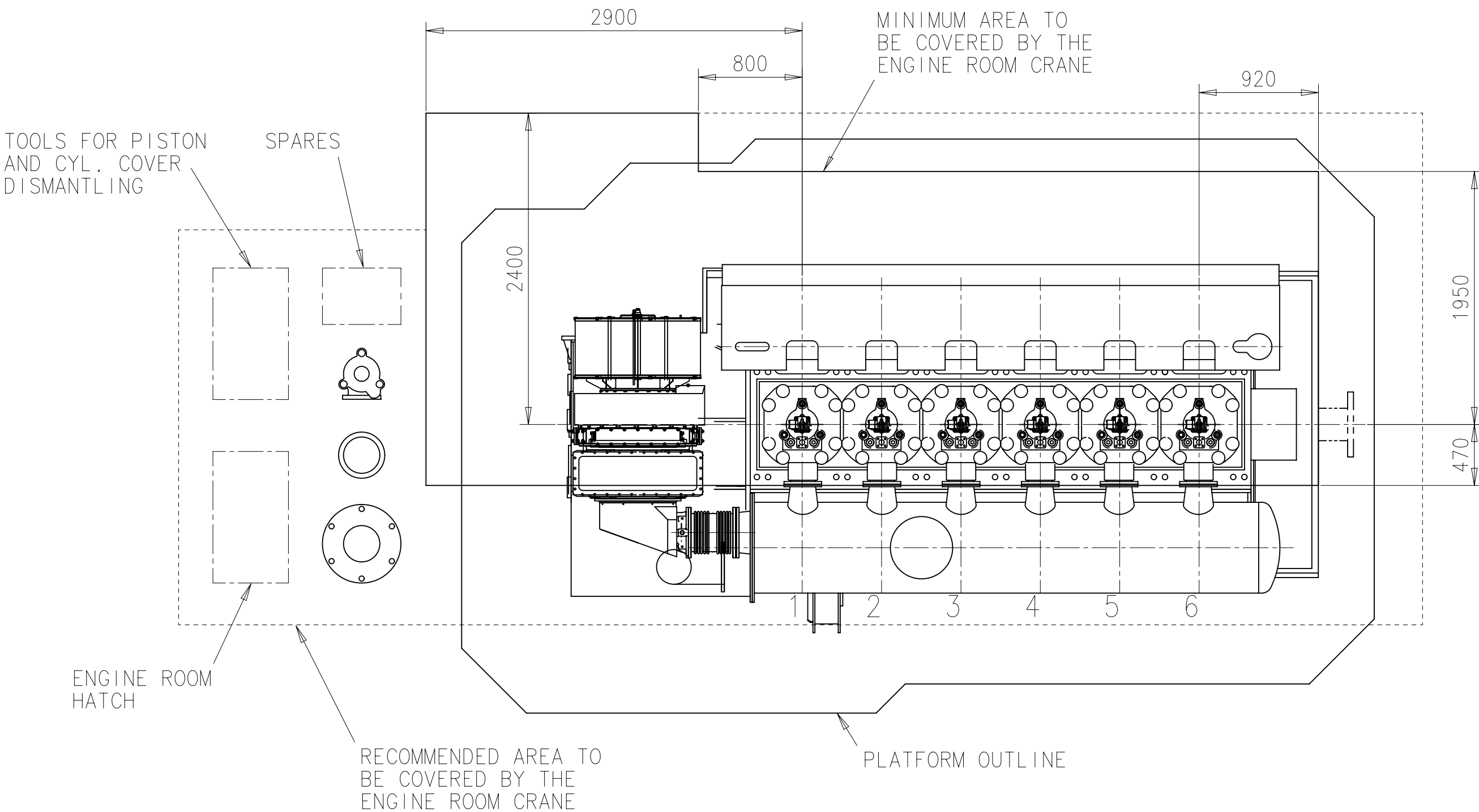
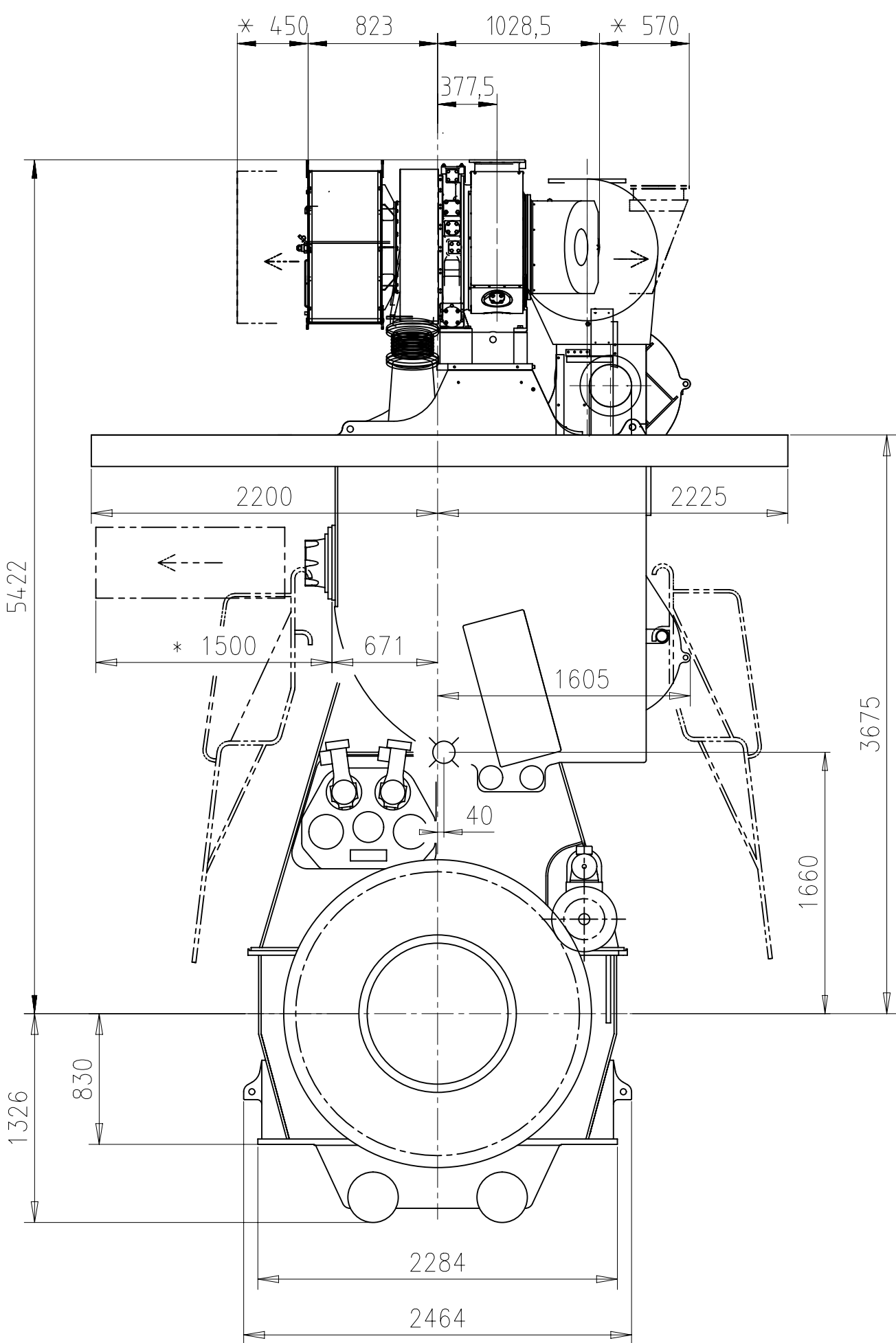
Abgasseite
EXHAUST SIDE

Antriebsseite
DRIVING END



Brennstoffseite
FUEL SIDE

Abgasseite
EXHAUST SIDE



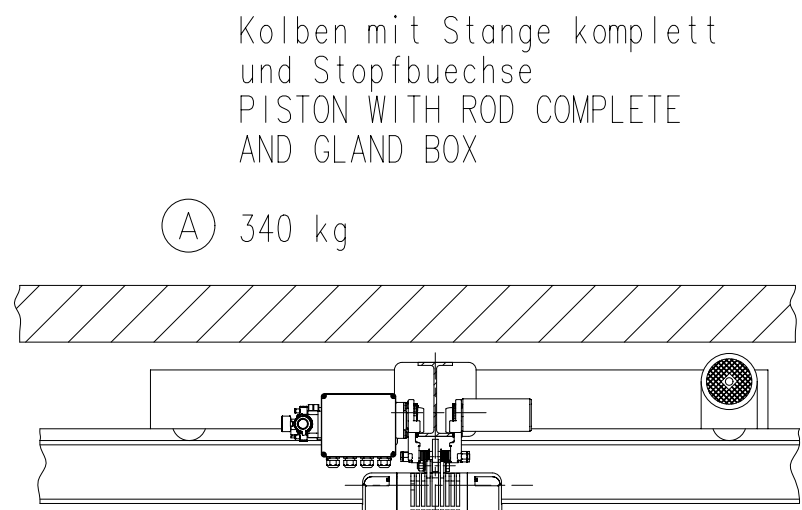
DIMENSIONS ONLY FOR REFERENCE
THIS OUTLINE DRAWING CAN NOT BE USED FOR FINAL DESIGN
PLEASE TAKE CORRESPONDING DESING GROUP

SURFACE PROTECTION SEE GROUP 0344	Modf.	Seq. No.	Material ID	Material Name	Dimension, Occ.	Standard or Drawing	Basic Material	Material Standard	Weight GR/NET	Rev.
TOLERANCING PRINCIPLE ISO8015	0	1	PAAD218274	DISMANTLING DIMENSIONS	1	1:33	6X35-B	XXXXX	0,001	1
GENERAL TOLERANCES ACCORDING TO ISO2768-mK	0	1	28.05.2019	ih003 Herceg	29.05.2019	hdo002 Darre	0812	DAAD113354	—	—

ca. Schwerpunkt
APPROX. CENTRE OF GRAVITY
Gewicht ohne Wasser und Öl= 84 t
WEIGHT WITHOUT WATER AND OIL
* Platz fuer Demontage
SPACE FOR REMOVAL

TURBOCHARGER MET37MB

Net Weight	0,001
Quantity PER ENGINE	1
Seq. No.	001
Material ID	PAAD218274
Material Name	DISMANTLING DIMENSIONS
Dimension, Occ.	1
Standard or Drawing	1:33
Basic Material	6X35-B
Material Standard	XXXXX
Weight GR/NET	0,001
Main Drw.	H
Units	mm kg
Scale	1:33
Size	A1
Page	1/1
Material ID	DAAD113354
Rev.	—



Zylindereinsatz mit Wasserleitmantel
CYLINDER LINER WITH WATER GUIDE JACKET

Gewicht ohne Hebevorrichtung:
WEIGHT WITHOUT LIFING TOOL:

(A) 795 kg

Zylinderdeckel mit Auslassventil
komplett und Wasserleitmantel
CYLINDER COVER WITH EXHAUST
VALVE COMPLETE AND WATER
GUIDE JACKET

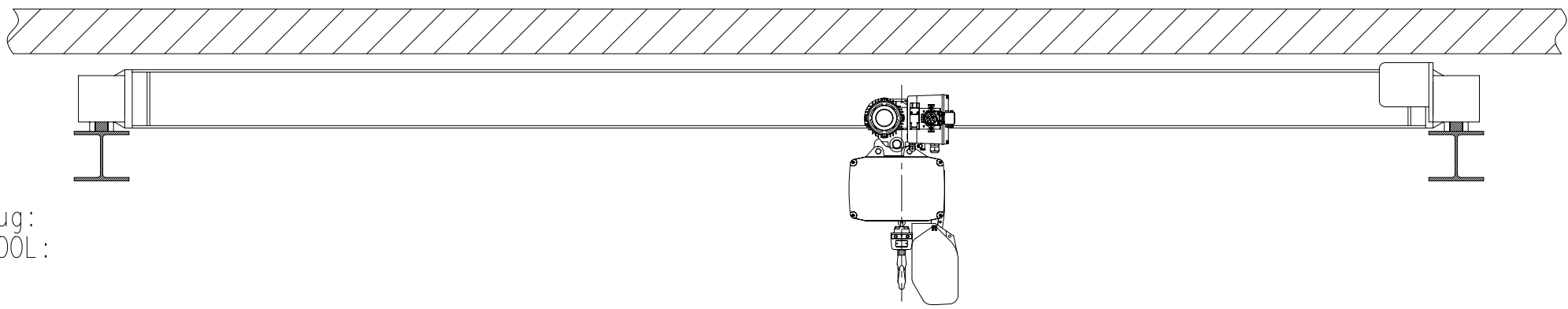
Gewicht ohne Hebewerkzeug:
Weight WITHOUT LIFING TOOL:

(A) 535 kg

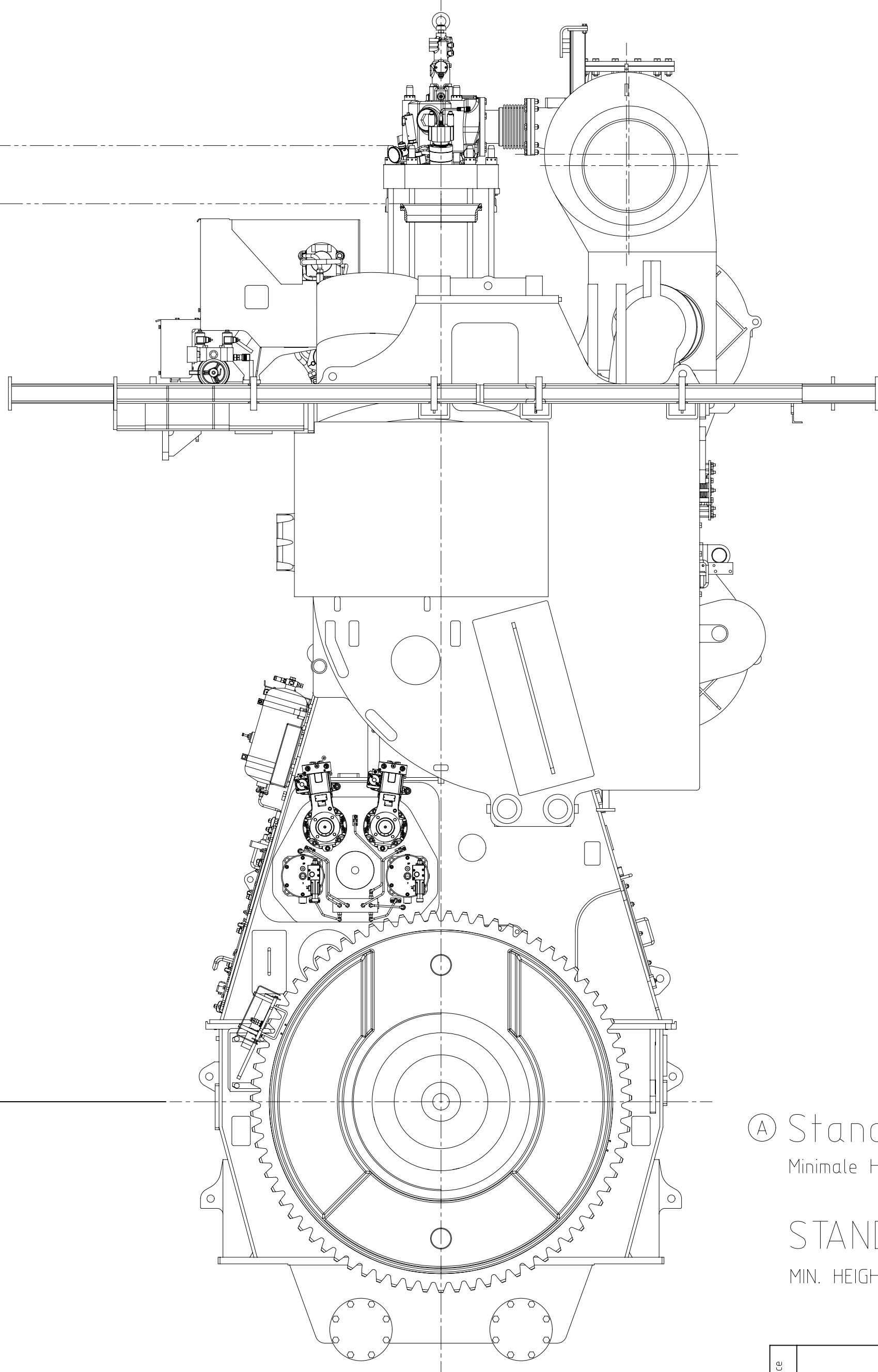
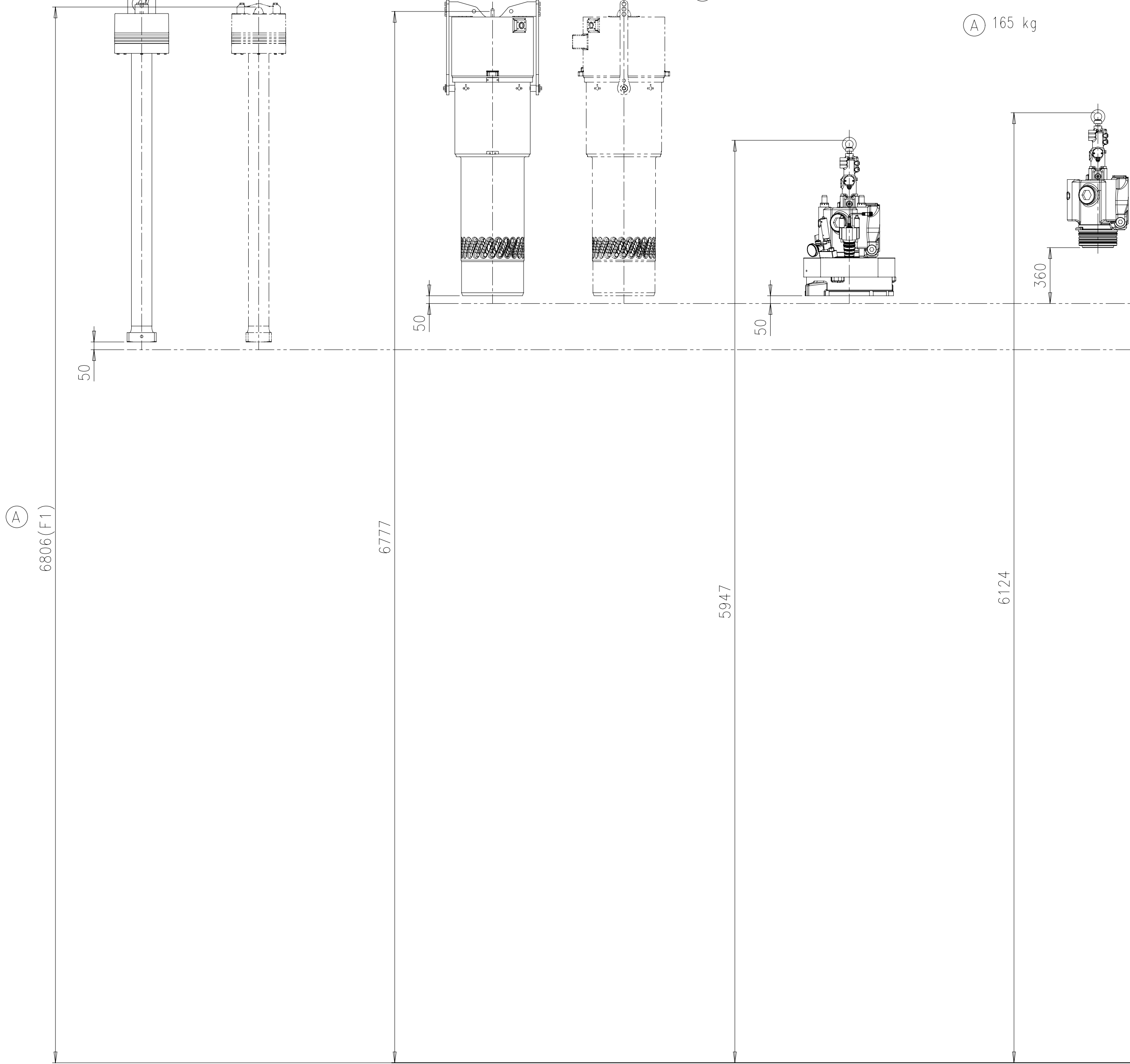
Auslassventil komplett
EXHAUST VALVE COMPLETE

Gewicht ohne Hebewerkzeug:
Weight WITHOUT LIFING TOOL:

(A) 165 kg



Krankapazitaet min.
CRANE CAPACITY MIN. 950 kg (A)



(A) Kompatibilitaetshinweis zum Kranhaken

Die Hebewerkzeuge zu diesem Motor
sind kompatibel mit folgenden
Kranhaken:
DIN 15401: Form RSN, Hakennummer 0.25 bis 0.5

COMPATIBILITY NOTE FOR CRANE HOOK

THE LIFTING TOOLS FOR THIS ENGINE
ARE COMPATIBLE WITH FOLLOWING
CRANE HOOK:
DIN 15401: SHAPE RSN, HOOK NUMBER 0.25 TO 0.5

(A) Standardausbau

Minimale Hoehe fuer den vertikalen Ausbau: F1

STANDARD DISMANTLING

MIN. HEIGHT FOR VERTICAL REMOVAL: F1

Free space for l.c.		0-Code XXXXX		Main Drw.	
Modif.	(A)	EAAD091495	02.04.2020		
Number		Drawn date		Number	Drawn date
Product X35-B		DISMANTLING DIMENSIONS		Ausbaumasse	
Units	mm kg	NX	Basic Material	Net Weight 0,001	
Made	22.01.2016	mda006	Dacic	Scale	1:20
Chkd	28.01.2016	abo011	Bösiger	Design Group	
Appd	29.01.2016	bha009	Haag	Drawing ID	DAAD075266
SURFACE PROTECTION SEE GROUP 0344		TOLERANCING PRINCIPLE ISO8015		GENERAL TOLERANCES ACCORDING TO ISO2768-mK	
Size		A1	Page	1/1	Material ID
PAAD218274		Rev.		A	

Download
"DXF file"

WinGD-6X35-B_Engine-outline-views

TRACK CHANGES

DATE	SUBJECT	DESCRIPTION
2018-01-30	DRAWING SET	First web upload
2020-08-26	DAAD113354	Engine Outline views for Turbocharger type 1xMET37MB has been added.
2020-07-20	DAAD075266	Revised Dismantling Dimensions drawing has been updated.
2021-05-19	PAAD364708	Revised Engine Outline views for Turbocharger type 1XA255-L has been added.

DISCLAIMER

© Copyright by Winterthur Gas & Diesel Ltd.

All rights reserved. No part of this document may be reproduced or copied in any form or by any means (electronic, mechanical, graphic, photocopying, recording, taping or other information retrieval systems) without the prior written permission of the copyright owner.

THIS PUBLICATION IS DESIGNED TO PROVIDE AN ACCURATE AND AUTHORITATIVE INFORMATION WITH REGARD TO THE SUBJECT-MATTER COVERED AS WAS AVAILABLE AT THE TIME OF PRINTING. HOWEVER, THE PUBLICATION DEALS WITH COMPLICATED TECHNICAL MATTERS SUITED ONLY FOR SPECIALISTS IN THE AREA, AND THE DESIGN OF THE SUBJECT-PRODUCTS IS SUBJECT TO REGULAR IMPROVEMENTS, MODIFICATIONS AND CHANGES. CONSEQUENTLY, THE PUBLISHER AND COPYRIGHT OWNER OF THIS PUBLICATION CAN NOT ACCEPT ANY RESPONSIBILITY OR LIABILITY FOR ANY EVENTUAL ERRORS OR OMISSIONS IN THIS BOOKLET OR FOR DISCREPANCIES ARISING FROM THE FEATURES OF ANY ACTUAL ITEM IN THE RESPECTIVE PRODUCT BEING DIFFERENT FROM THOSE SHOWN IN THIS PUBLICATION. THE PUBLISHER AND COPYRIGHT OWNER SHALL UNDER NO CIRCUMSTANCES BE HELD LIABLE FOR ANY FINANCIAL CONSEQUENTIAL DAMAGES OR OTHER LOSS, OR ANY OTHER DAMAGE OR INJURY, SUFFERED BY ANY PARTY MAKING USE OF THIS PUBLICATION OR THE INFORMATION CONTAINED HEREIN.