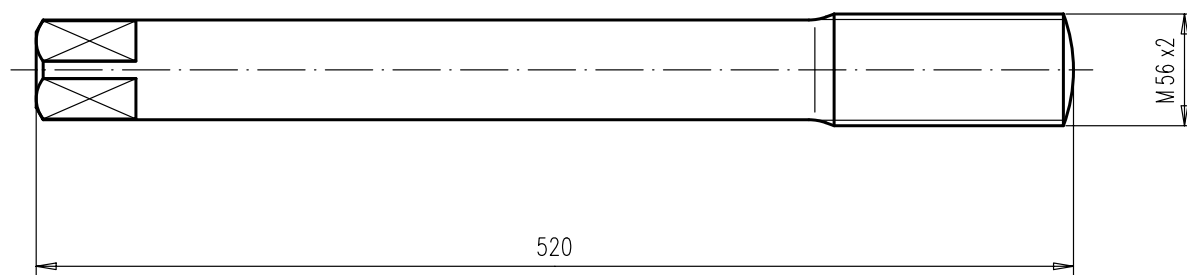
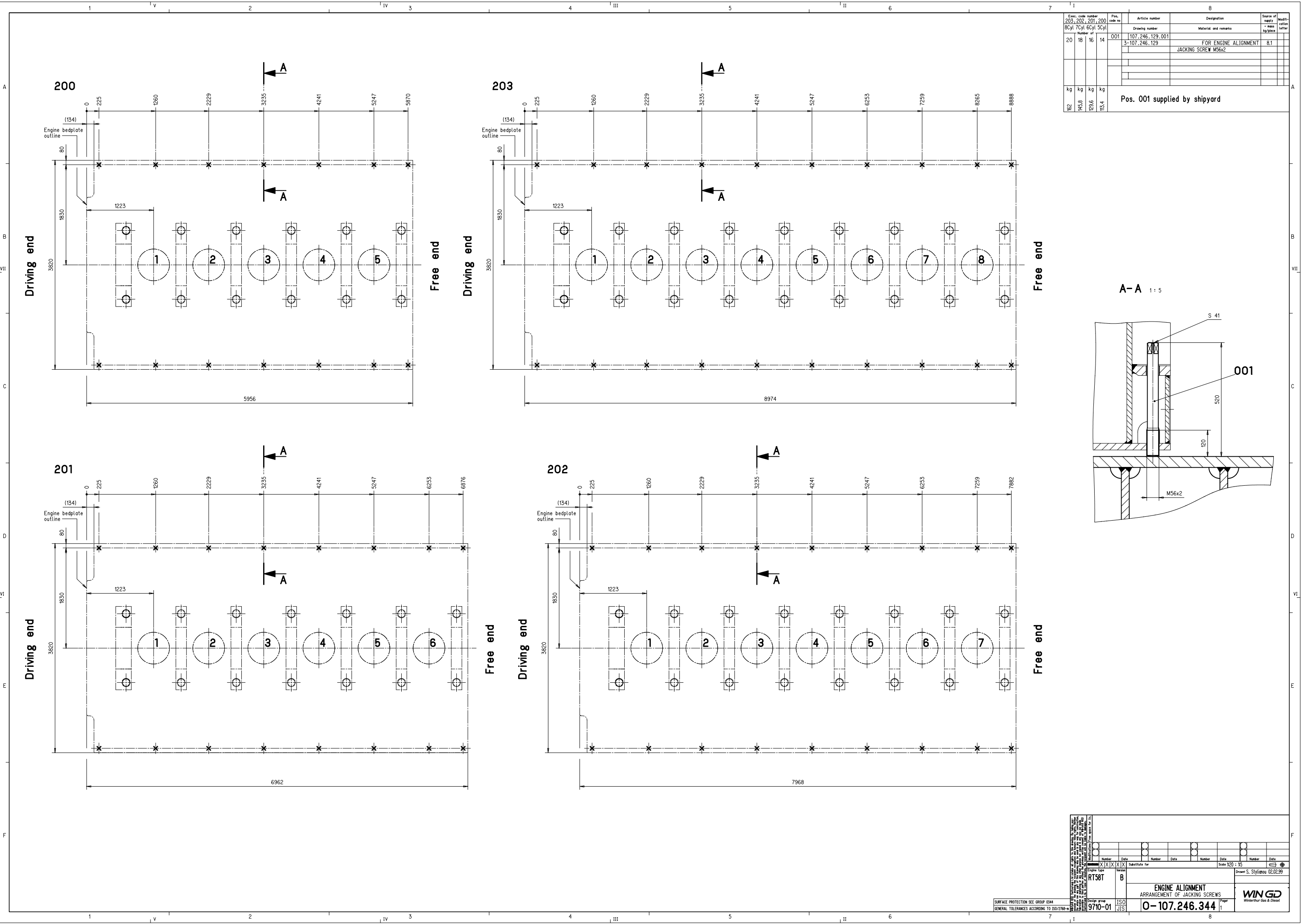


Exec. code number 203, 202, 201, 200				Pos. code no	Article number	Designation	Source of supply mass kg/piece	Modifi- cation letter
PER ENGINE					Drawing number	Material and remarks		
	Number of		1	001	107.246.344.200			
					0-107.246.344			
						ENGINE ALIGNMENT		
						ANORDNUNG DER STELLSCHR.		
	1		1	002	107.246.344.201			
					0-107.246.344		130	
						ENGINE ALIGNMENT		
						ANORDNUNG DER STELLSCHR.		
	1			003	107.246.344.202			
					0-107.246.344		146	
						ENGINE ALIGNMENT		
						ANORDNUNG DER STELLSCHR.		
1				004	107.246.344.203			
					0-107.246.344		162	
						ENGINE ALIGNMENT		
						ANORDNUNG DER STELLSCHR.		
kg	kg	kg	kg					
162	146	130						

200	5Cy l.
201	6Cy l.
202	7Cy l.
203	8Cy l.



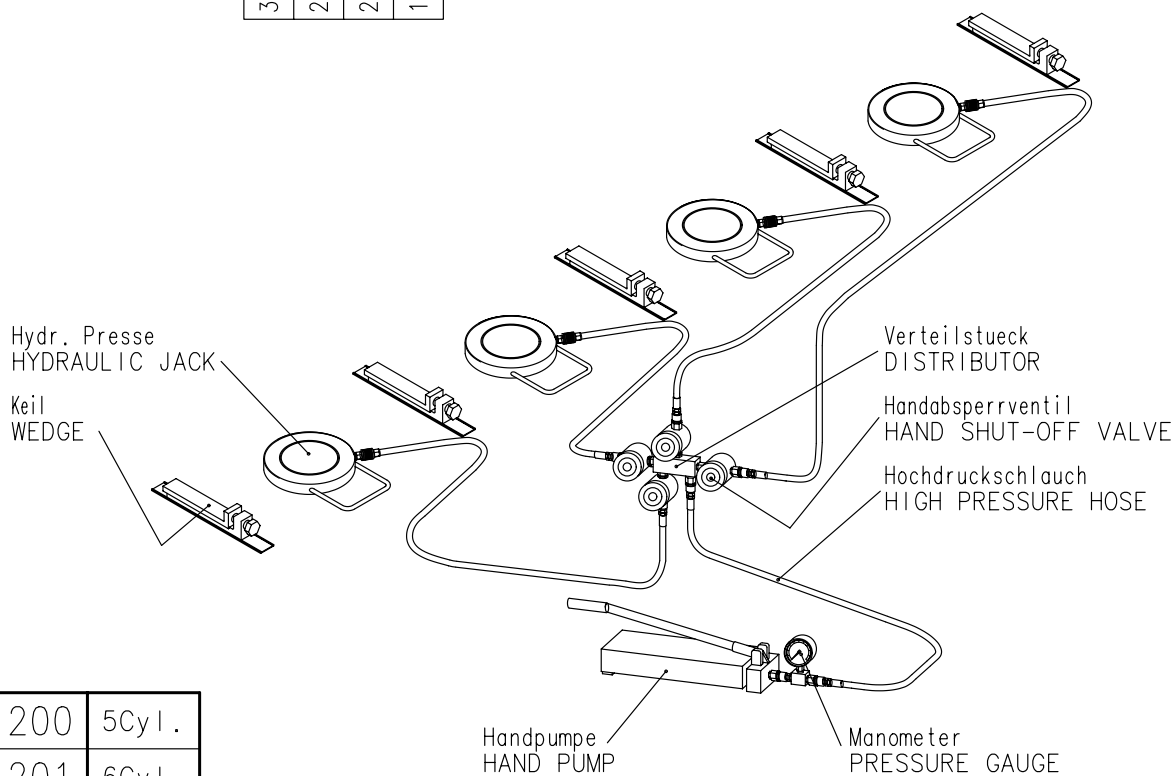
Das mit ○ bezeichnete Werkzeug wird im Schrank Gruppe 9408-11 aufbewahrt TOOLS MARKED WITH ○ WILL BE KEPT IN A CUPBOARD IN ENGINEERS STORE (SEE GROUP 9408-11) SURFACE PROTECTION SEE GROUP 0344 GENERAL TOLERANCES ACCORDING TO ISO/2768-m		Modifications: Free space for ITC.											
		Q-Code		X		X		X		X		X	
		Engine type		RT58T-B		Werkzeug Motorausrichtung		TOOL ENGINE ALIGNMENT		3- 107.245.963		Page:	
		Design group		9710-01		ISO		JIS		3- 107.245.963		Page:	
Win G D Winterthur Gas & Diesel													



Exec. code number				Pos. code no	Article number	Designation	Source of supply - max kg/piece	Modification letter
203, 202, 201, 80yl	70yl	60yl	50yl					
Number of				001	107.246.129.001	Material and remarks	8.1	
20	18	16	14		3-107.246.129	FOR ENGINE ALIGNMENT		
						JACKING SCREW M56x2		
kg	kg	kg	kg	Pos. 001 supplied by shipyard				
162	145.8	123.6	113.4					

Design group				Page			
9710-01				1			
ENGINE ALIGNMENT				O-107.246.344			
ARRANGEMENT OF JACKING SCREWS				WINGD			
Winterthur Gas & Diesel							

Exec. code number 203, 202, 201, 200				Pos. code no	Article number	Designation	Source of supply mass kg/piece	Modifi- cation letter
PER ENGINE					Drawing number	Material and remarks		
			1	001	107.246.342.200			
					0-107.246.342		187	
						ENGINE ALIGNMENT		
						ANORDN. DER PRESSEN & KEILE		
		1		002	107.246.342.201			
					0-107.246.342		274	
						ENGINE ALIGNMENT		
						ANORDN. DER PRESSEN & KEILE		
	1			003	107.246.342.202			
					0-107.246.342		291	
						ENGINE ALIGNMENT		
						ANORDN. DER PRESSEN & KEILE		
1				004	107.246.342.203			
					0-107.246.342		307	
						ENGINE ALIGNMENT		
						ANORDN. DER PRESSEN & KEILE		
kg	kg	kg	kg					
307	291	274	187					



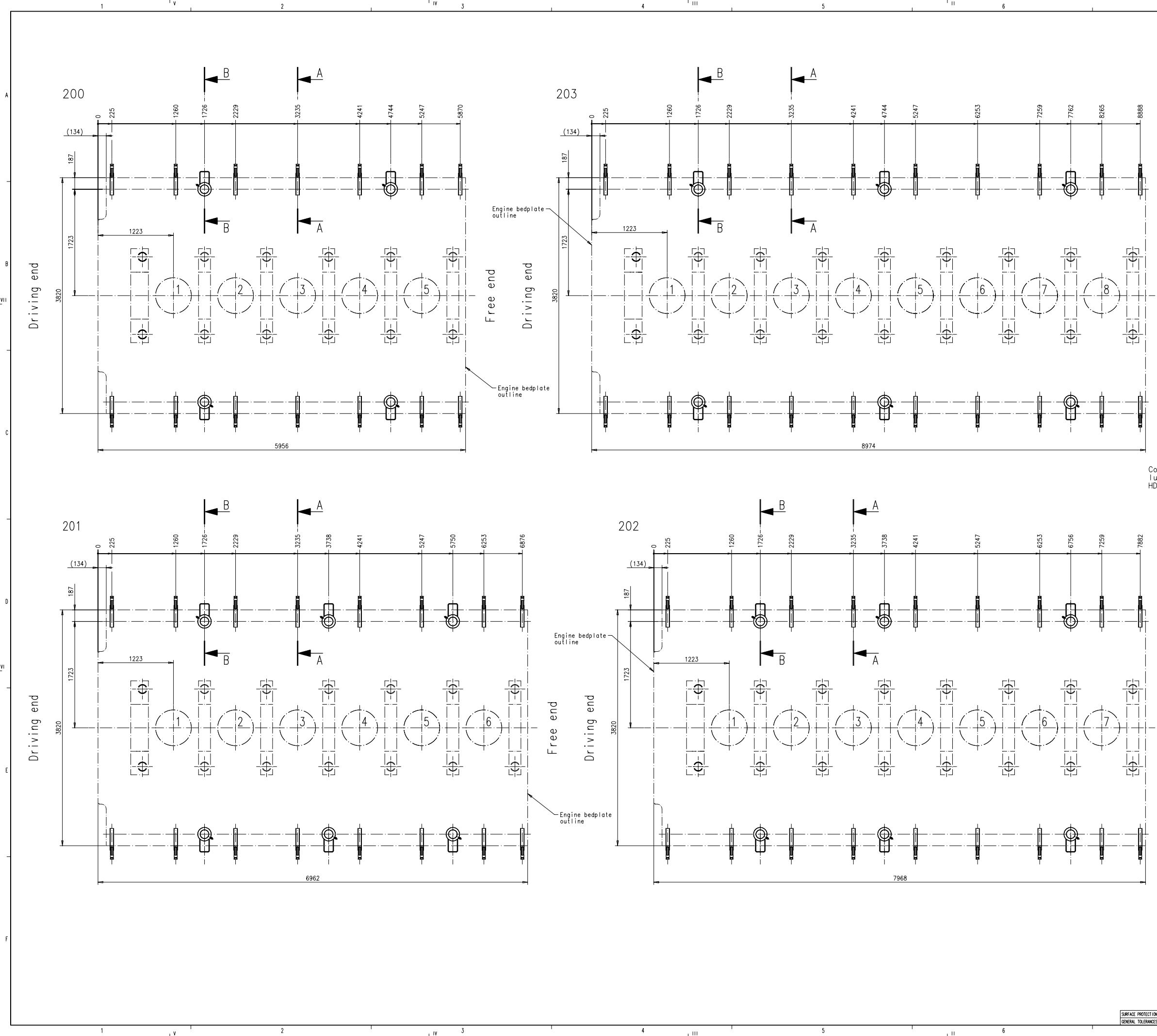
200	5Cyl.
201	6Cyl.
202	7Cyl.
203	8Cyl.

Das mit ○ bezeichnete Werkzeug wird im Schrank Gruppe 9408-11 aufbewahrt
 TOOLS MARKED WITH ○ WILL BE KEPT IN A CUPBOARD IN ENGINEERS STORE (SEE GROUP 9408-11)

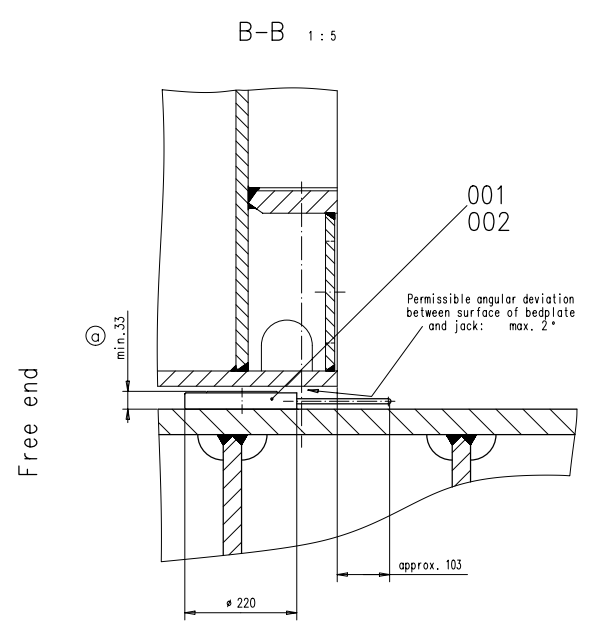
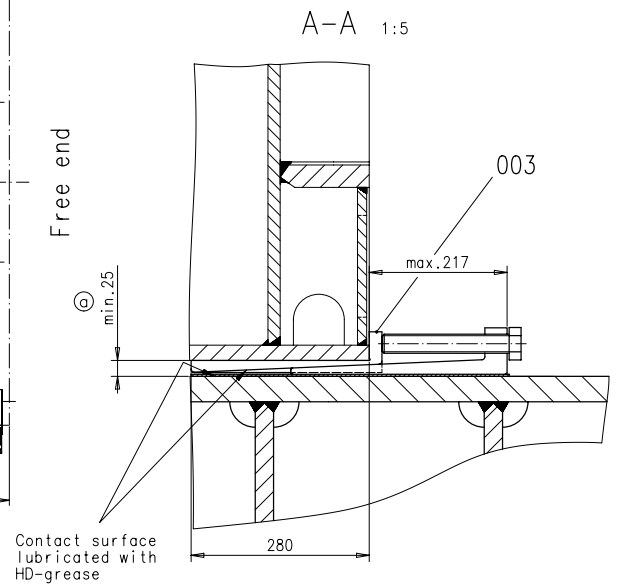
SURFACE PROTECTION SEE GROUP 0344

GENERAL TOLERANCES ACCORDING TO ISO/2768-m

Modifications: Free space for ITC. 7-29.117 08.07.03		Number		Date		Number		Date		Number		Date	
		X		X		X		X		X		X	
		Q-Code		Substitute for		Scale -/-							
		Engine type		RT58T-B		Werkzeug Motorausrichtung		TOOL ENGINE ALIGNMENT		Drawn: S.NATALI 20.11.98			
Design group		9710-01		ISO		JIS		3- 107.245.953		Page:			



Spec. code number	Art. code no.	Article number	Designation	Source of supply	Modification letter
203, 202, 201, 200					
1	001	107.245.882.201	Hydr. Pressen mit Handpumpe 1500 kN		
		1-107.245.882	HYDR. JACKS WITH HAND PUMP 1500 kN	70.7	
			ASSEMBLY DRAW.		
2	002	107.245.882.200	Hydr. Pressen mit Handpumpe 1500 kN		
		1-107.245.882	HYDR. JACKS WITH HAND PUMP 1500 kN	70.7	
			ASSEMBLY DRAW.		
20	003	107.245.895.200	Schraeger Keil		
		2-107.245.895	WEDGE	7.511	
1	004	107.245.959.500	Ausrichtvorschrift		
		4-107.245.959	ALIGNMENT INSTRUCTIONS	0.001	
kg	kg	kg	kg		
307	291	274	187		



First introduced at RTAS8T-B

Number	7-77.997	14.01.10			
Code	X	X	X	X	X
Substitute for					
Number					
Code	1:20				
Drawn date					
Drawn	1. LINDERT	20.11.98			
Motor Ausrichtung					
ENGINE ALIGNMENT					
ARRANGEMENT OF JACKS & W					
O- 107.246.342					
Design group	9710-01	ISO			
Drawn					

WINGD Wintherthur Gas & Diesel

MIDS_WinGD-RT-flex58T-E_TOOL-ENGINE-ALIGNMENT

TRACK CHANGES

DATE	SUBJECT	DESCRIPTION
2017-05-28	DRAWING SET	First web upload

DISCLAIMER

© Copyright by Winterthur Gas & Diesel Ltd.

All rights reserved. No part of this document may be reproduced or copied in any form or by any means (electronic, mechanical, graphic, photocopying, recording, taping or other information retrieval systems) without the prior written permission of the copyright owner.

THIS PUBLICATION IS DESIGNED TO PROVIDE AN ACCURATE AND AUTHORITATIVE INFORMATION WITH REGARD TO THE SUBJECT-MATTER COVERED AS WAS AVAILABLE AT THE TIME OF PRINTING. HOWEVER, THE PUBLICATION DEALS WITH COMPLICATED TECHNICAL MATTERS SUITED ONLY FOR SPECIALISTS IN THE AREA, AND THE DESIGN OF THE SUBJECT-PRODUCTS IS SUBJECT TO REGULAR IMPROVEMENTS, MODIFICATIONS AND CHANGES. CONSEQUENTLY, THE PUBLISHER AND COPYRIGHT OWNER OF THIS PUBLICATION CAN NOT ACCEPT ANY RESPONSIBILITY OR LIABILITY FOR ANY EVENTUAL ERRORS OR OMISSIONS IN THIS BOOKLET OR FOR DISCREPANCIES ARISING FROM THE FEATURES OF ANY ACTUAL ITEM IN THE RESPECTIVE PRODUCT BEING DIFFERENT FROM THOSE SHOWN IN THIS PUBLICATION. THE PUBLISHER AND COPYRIGHT OWNER SHALL UNDER NO CIRCUMSTANCES BE HELD LIABLE FOR ANY FINANCIAL CONSEQUENTIAL DAMAGES OR OTHER LOSS, OR ANY OTHER DAMAGE OR INJURY, SUFFERED BY ANY PARTY MAKING USE OF THIS PUBLICATION OR THE INFORMATION CONTAINED HEREIN.