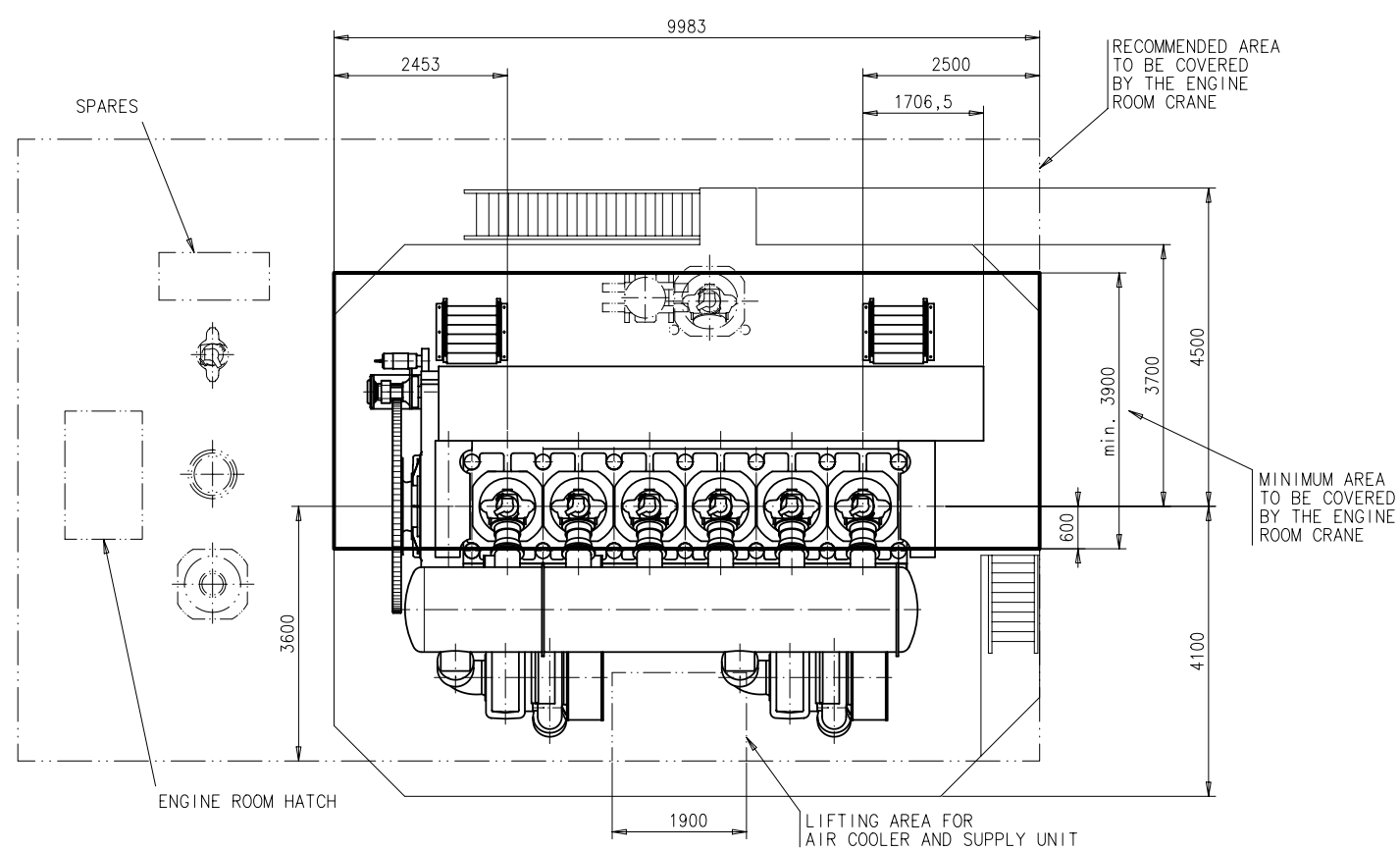
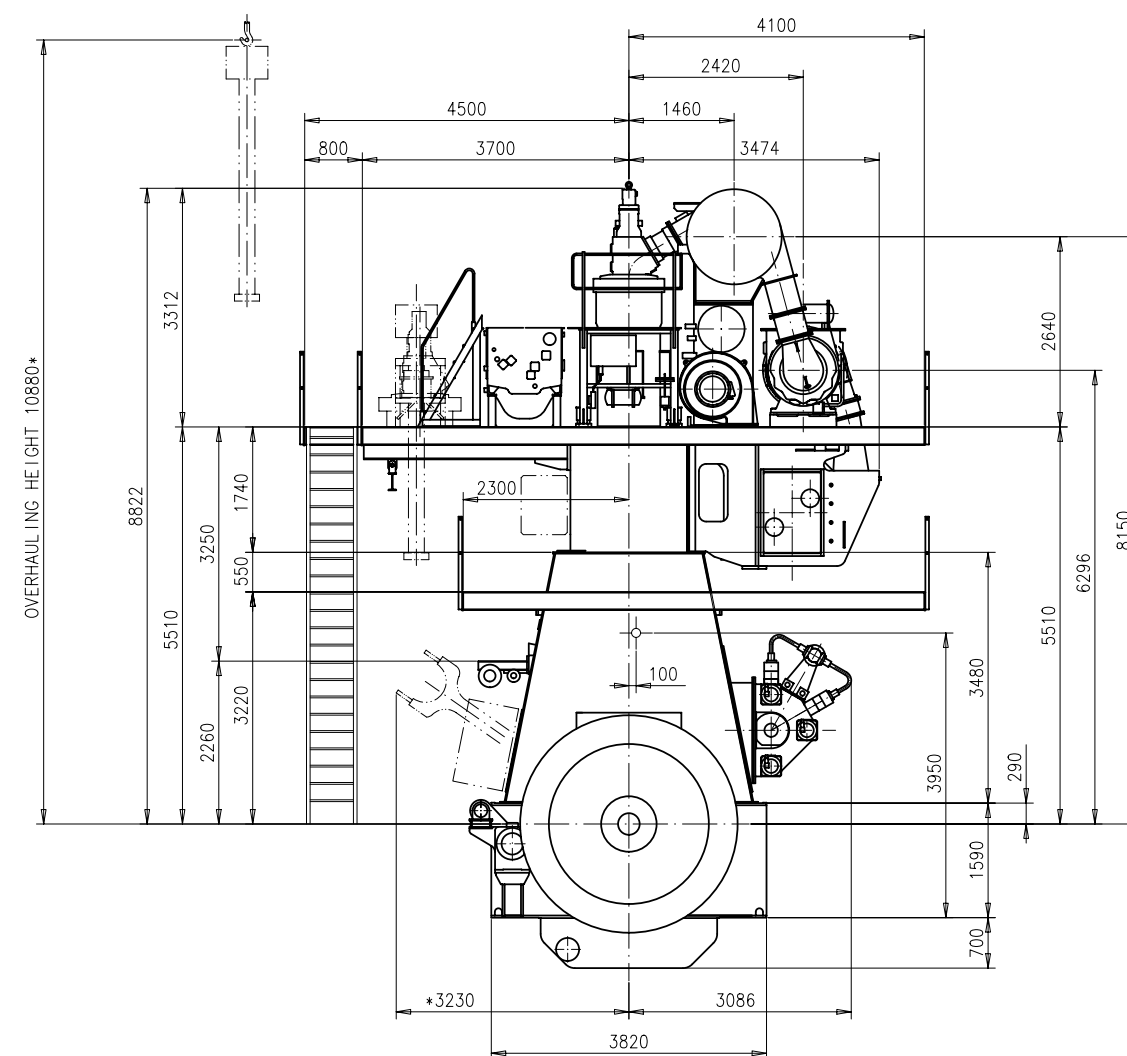
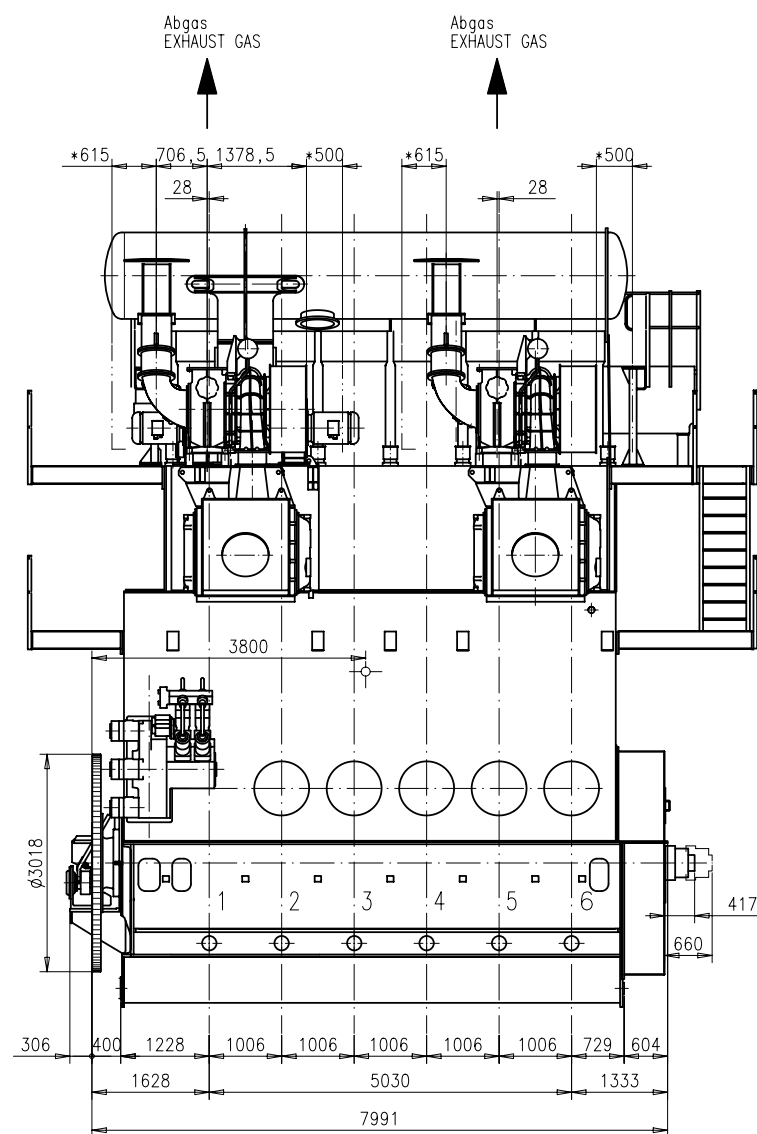
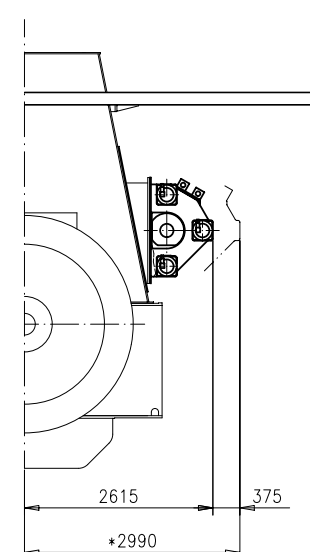


Download  
"DXF file"



Ausbau  
DISMANTLING



 = ca. Schwerpunkt  
AB. CENTRE OF GRAVITY

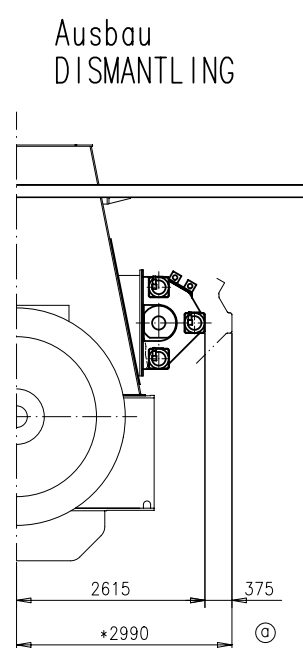
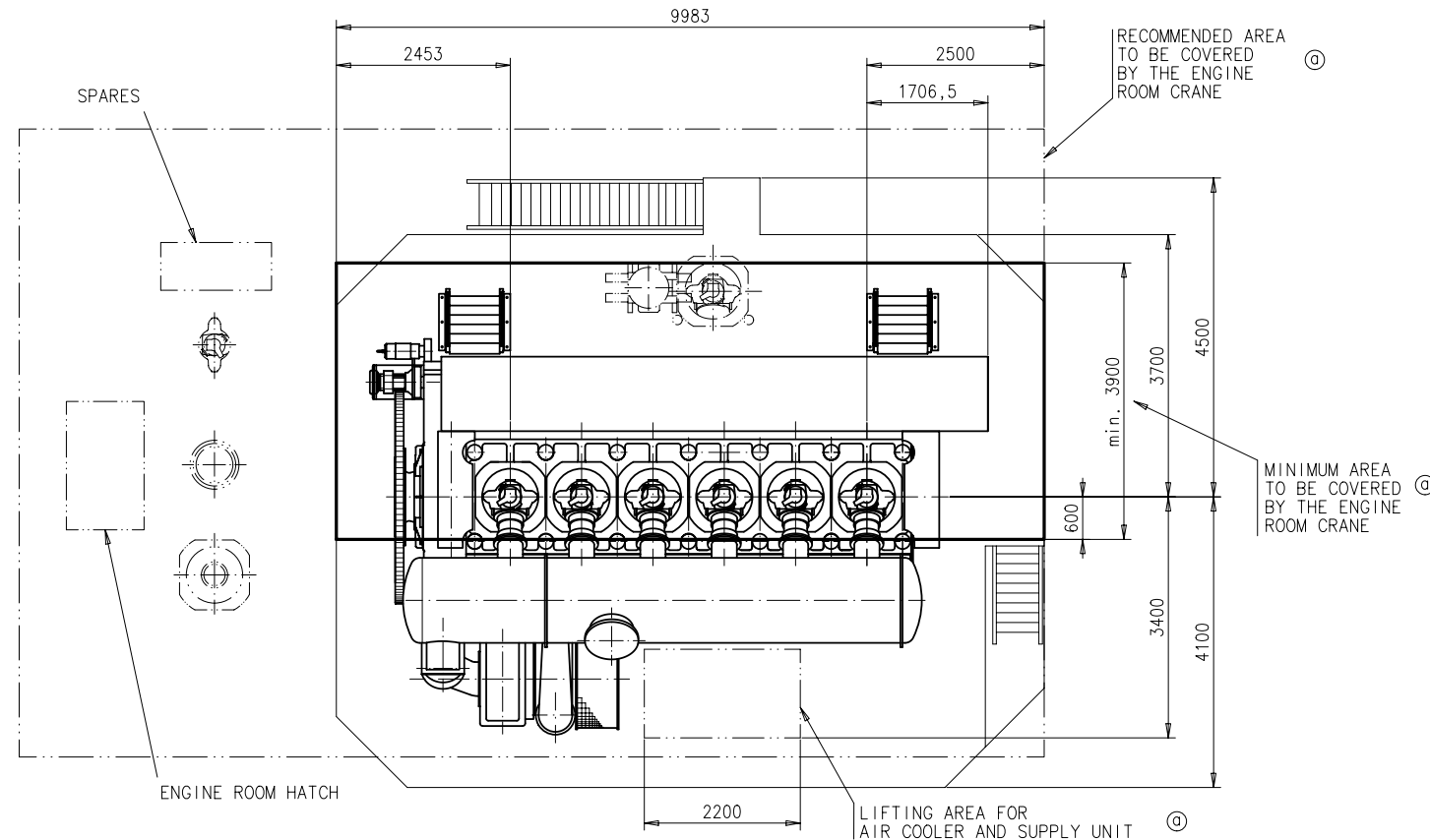
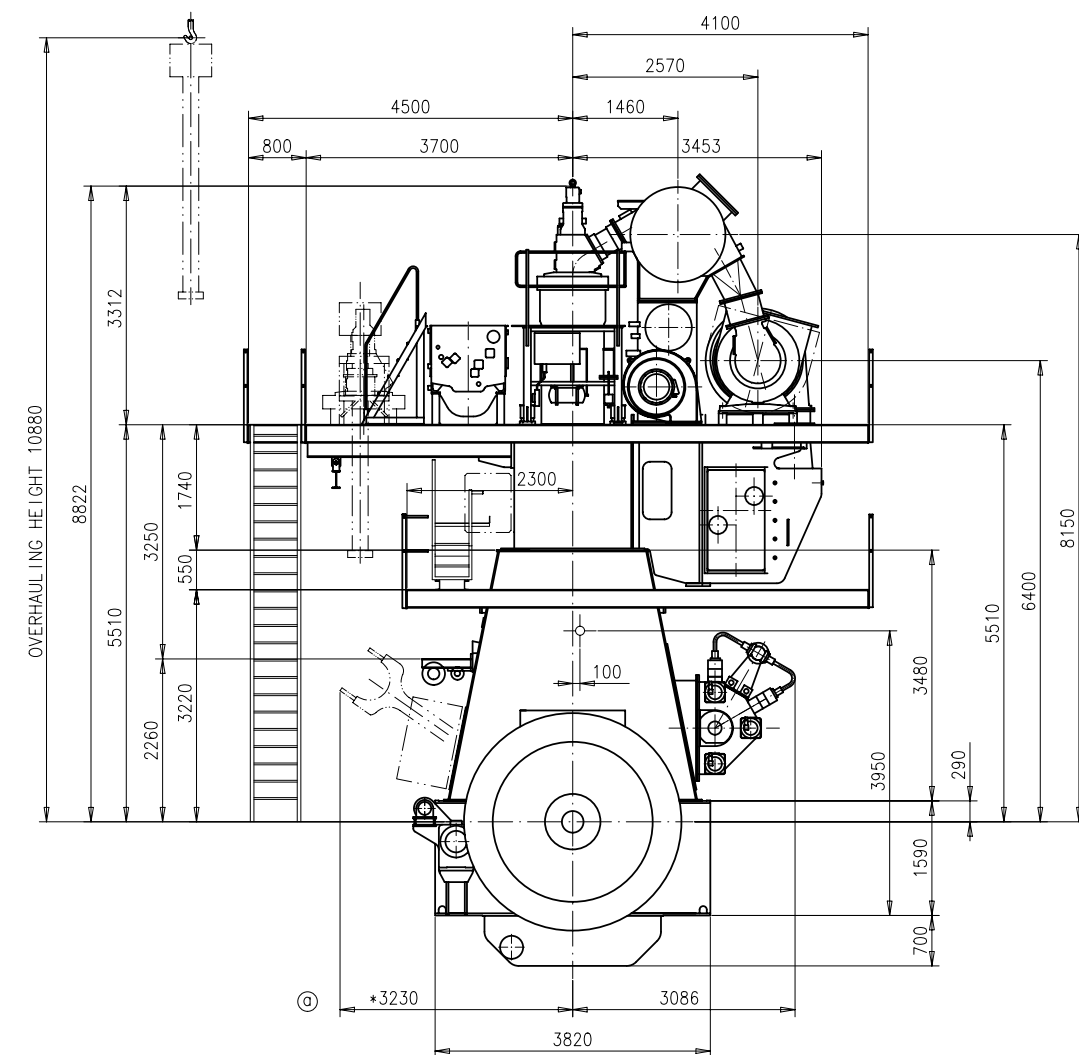
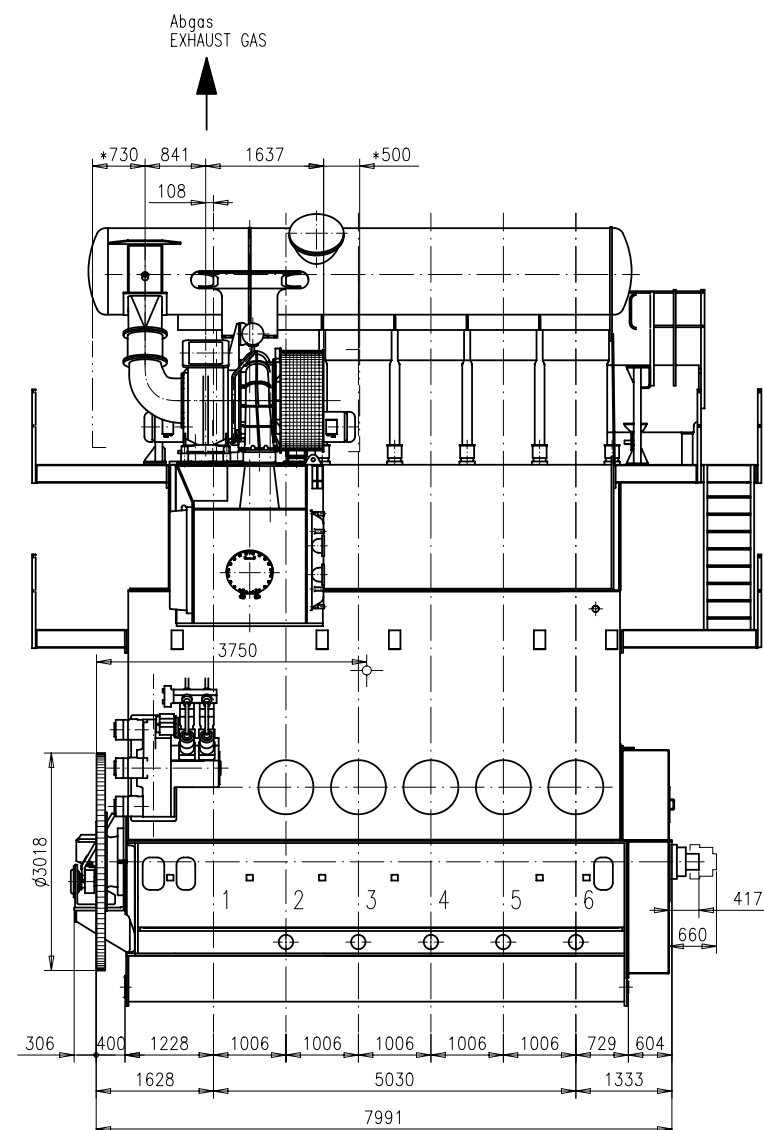
\* = Platz fuer Demontage  
SPACE FOR REMOVAL


Gewicht ohne Wasser und Oel = 322 t  
WEIGHT WITHOUT WATER AND OIL

2xTPL73-B

1- Motor and its relative parts to this drawing by the manufacturer. The drawing may be used only for construction purposes. No part of this drawing may be used, copied, or reproduced in any form without the written consent of Wartsila Corporation. It is the responsibility of the user to ensure that the drawing is used for the intended purpose and is not misused. The user is responsible to third parties for any damage or injury caused by the use of this drawing.		Modifications Free space for ilc.	
Number	Drawn date	Number	Drawn date
Number	Drawn date	Number	Drawn date
Number	Drawn date	Number	Drawn date
O-Code		Substitute for	
Scale		Scale	
Engine type 6RT-flex58T-B		Motoransichten ENGINE OUTLINE VIEW	
Design group 0812		ISO JIS	
1- 107.368.562		Page:	
CAD		H	
C. SCHMUTZ 21.03.06 C. Schmutz / B. Frei 21.03.06 Wartsila Switzerland Ltd		WARTSILA	

Download  
"DXF file"



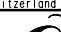

 = ca. Schwerpunkt  
AB. CENTRE OF GRAVITY

\* = Platz fuer Demontage  
SPACE FOR REMOVAL

Gewicht ohne Wasser und Oel = 322 t      (a)

1 x TPL77-B

Wärtsilä Switzerland Ltd. retains all rights to this drawing. By using this drawing, the user agrees that the user is not to be held responsible for construction errors. The user must not use this drawing for any other purpose than for construction of the engine. The user must not use this drawing for any other purpose than for construction of the engine. The user must not use this drawing for any other purpose than for construction of the engine.

Modifications Free space for file:									
g	7-42.441	22.03.06							
Number	Drawn date	Number	Drawn date	Number	Drawn date	Number	Drawn date	Number	Drawn date
O-Code X   X   X   X   X						Substitute for		Scale 1:50	
Engine type						Motoransichten		Drawn: C. SCHMUTZ 29.11.05	
6RT-f1ex58T-B								C. Schmutz / B. Frei 29.11.05	
						ENGINE OUTLINE VIEW		Wärtsilä Switzerland Ltd	
						CAD			
Design group		ISO	Page:						
0812		JIS	1- 107.364.051						
			H						

SURFACE PROTECTION SEE GROUP 0344
GENERAL TOLERANCES ACCORDING TO ISO/2768-m

## WinGD-6RT-flex58T-D\_Engine-outline-views

### TRACK CHANGES

DATE	SUBJECT	DESCRIPTION
2018-02-26	DRAWING SET	First web upload

### DISCLAIMER

© Copyright by Winterthur Gas & Diesel Ltd.

All rights reserved. No part of this document may be reproduced or copied in any form or by any means (electronic, mechanical, graphic, photocopying, recording, taping or other information retrieval systems) without the prior written permission of the copyright owner.

THIS PUBLICATION IS DESIGNED TO PROVIDE AN ACCURATE AND AUTHORITATIVE INFORMATION WITH REGARD TO THE SUBJECT-MATTER COVERED AS WAS AVAILABLE AT THE TIME OF PRINTING. HOWEVER, THE PUBLICATION DEALS WITH COMPLICATED TECHNICAL MATTERS SUITED ONLY FOR SPECIALISTS IN THE AREA, AND THE DESIGN OF THE SUBJECT-PRODUCTS IS SUBJECT TO REGULAR IMPROVEMENTS, MODIFICATIONS AND CHANGES. CONSEQUENTLY, THE PUBLISHER AND COPYRIGHT OWNER OF THIS PUBLICATION CAN NOT ACCEPT ANY RESPONSIBILITY OR LIABILITY FOR ANY EVENTUAL ERRORS OR OMISSIONS IN THIS BOOKLET OR FOR DISCREPANCIES ARISING FROM THE FEATURES OF ANY ACTUAL ITEM IN THE RESPECTIVE PRODUCT BEING DIFFERENT FROM THOSE SHOWN IN THIS PUBLICATION. THE PUBLISHER AND COPYRIGHT OWNER SHALL UNDER NO CIRCUMSTANCES BE HELD LIABLE FOR ANY FINANCIAL CONSEQUENTIAL DAMAGES OR OTHER LOSS, OR ANY OTHER DAMAGE OR INJURY, SUFFERED BY ANY PARTY MAKING USE OF THIS PUBLICATION OR THE INFORMATION CONTAINED HEREIN.