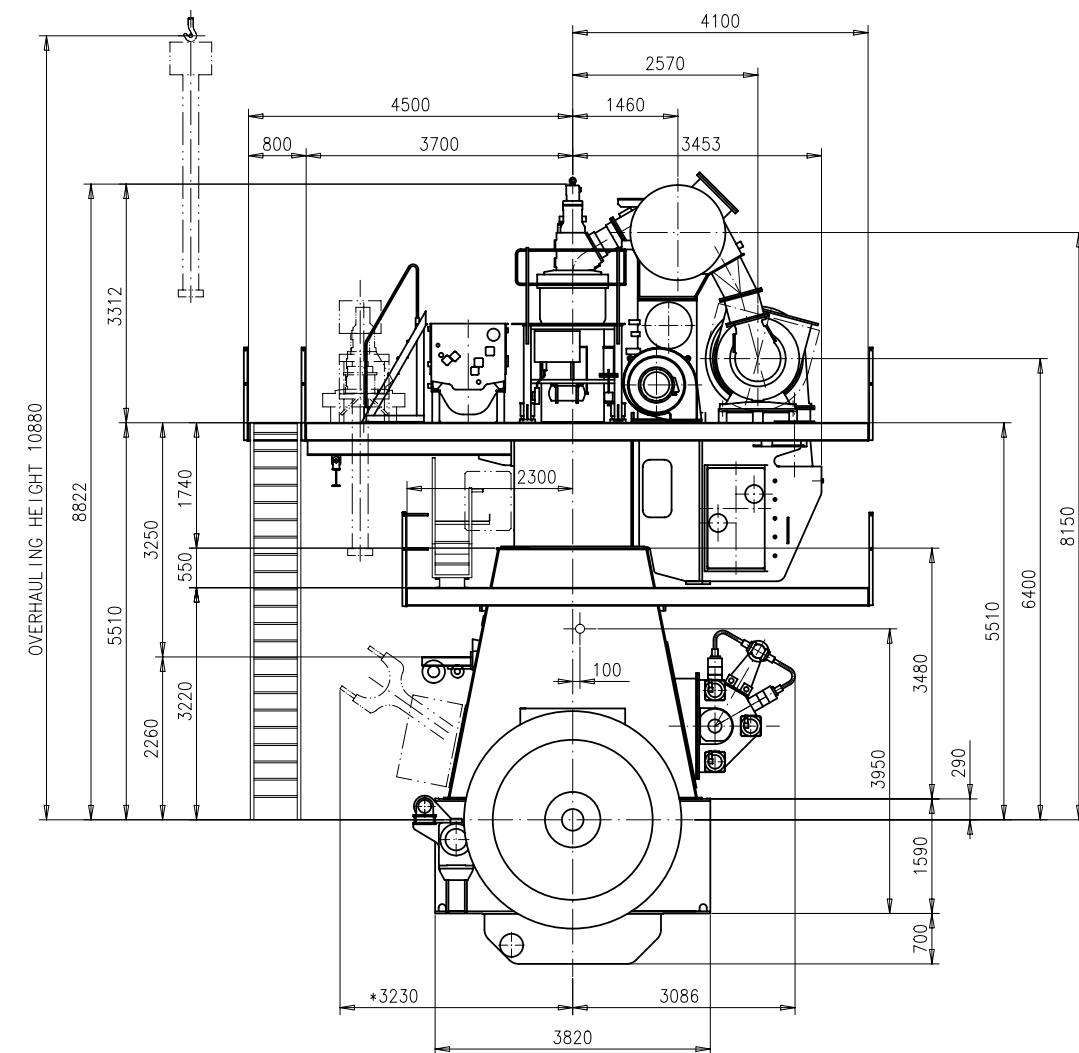
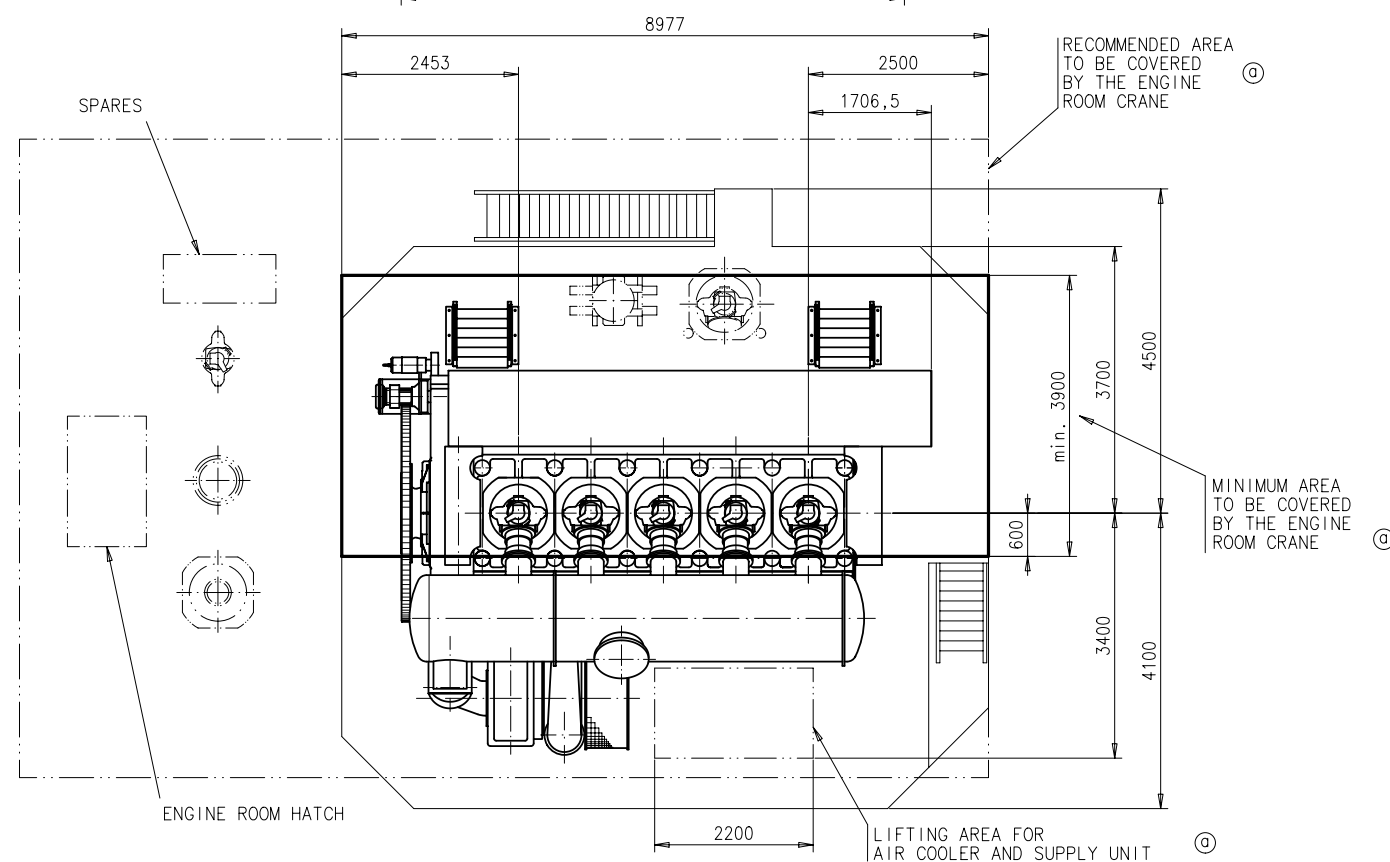
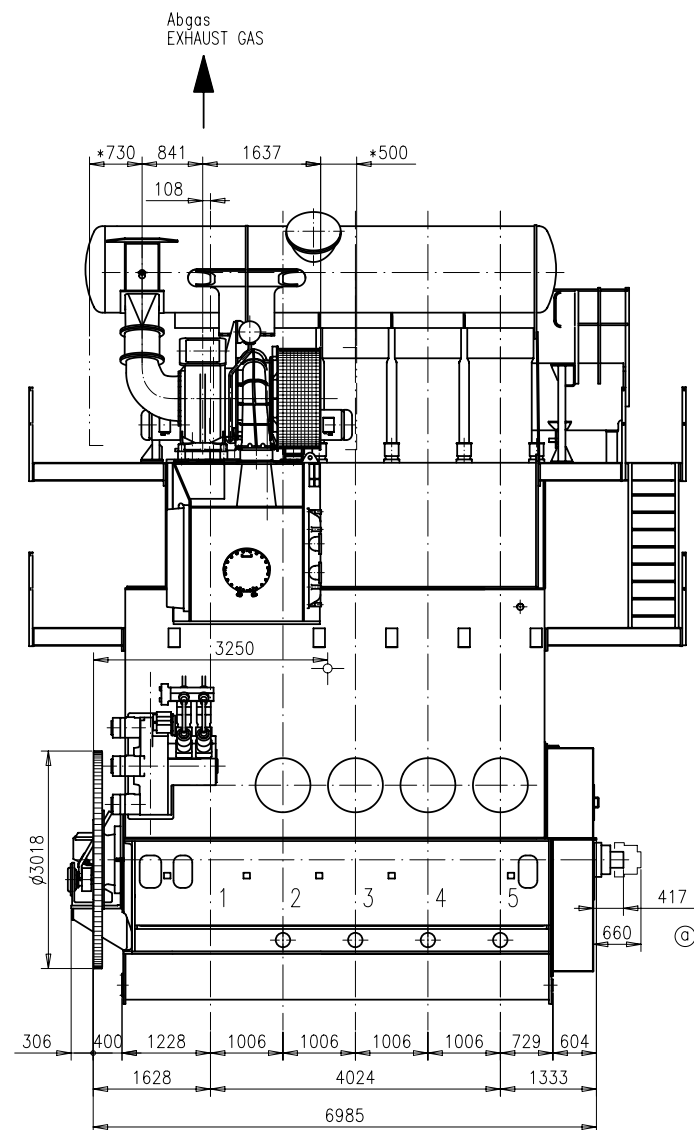
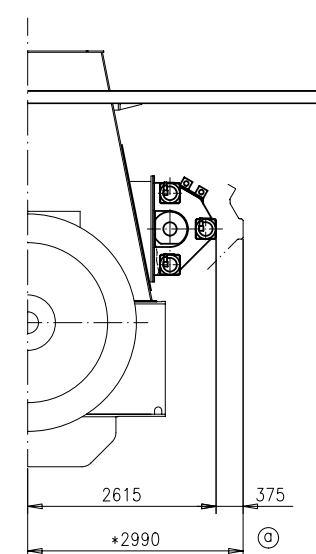


Download
"DXF file"



Ausbau
DISMANTLING

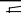



 = ca. Schwerpunkt
AB. CENTRE OF GRAVITY

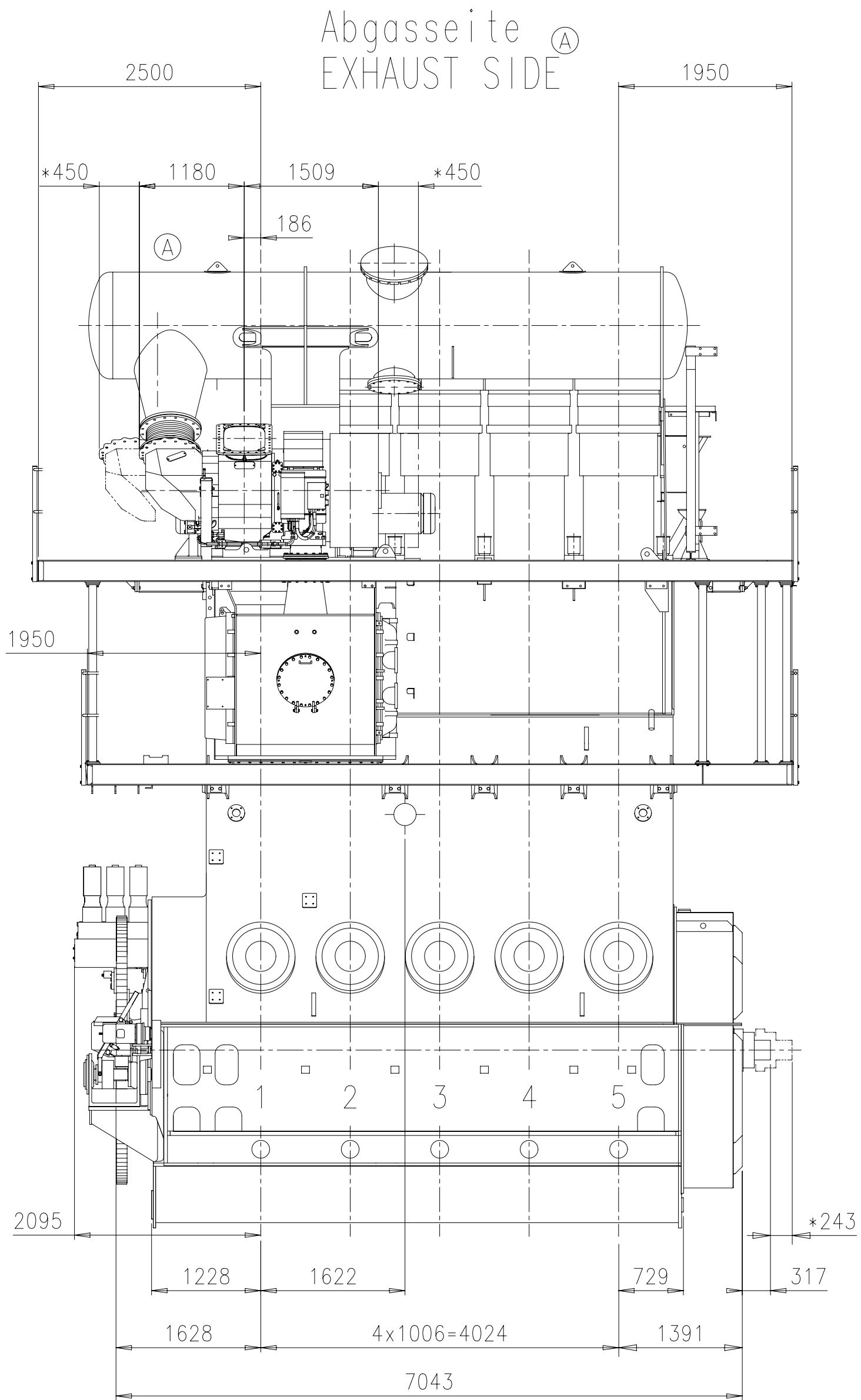
* = Platz fuer Demontage
SPACE FOR REMOVAL

Gewicht ohne Wasser und Oel= 281 t (a)
WEIGHT WITHOUT WATER AND OIL

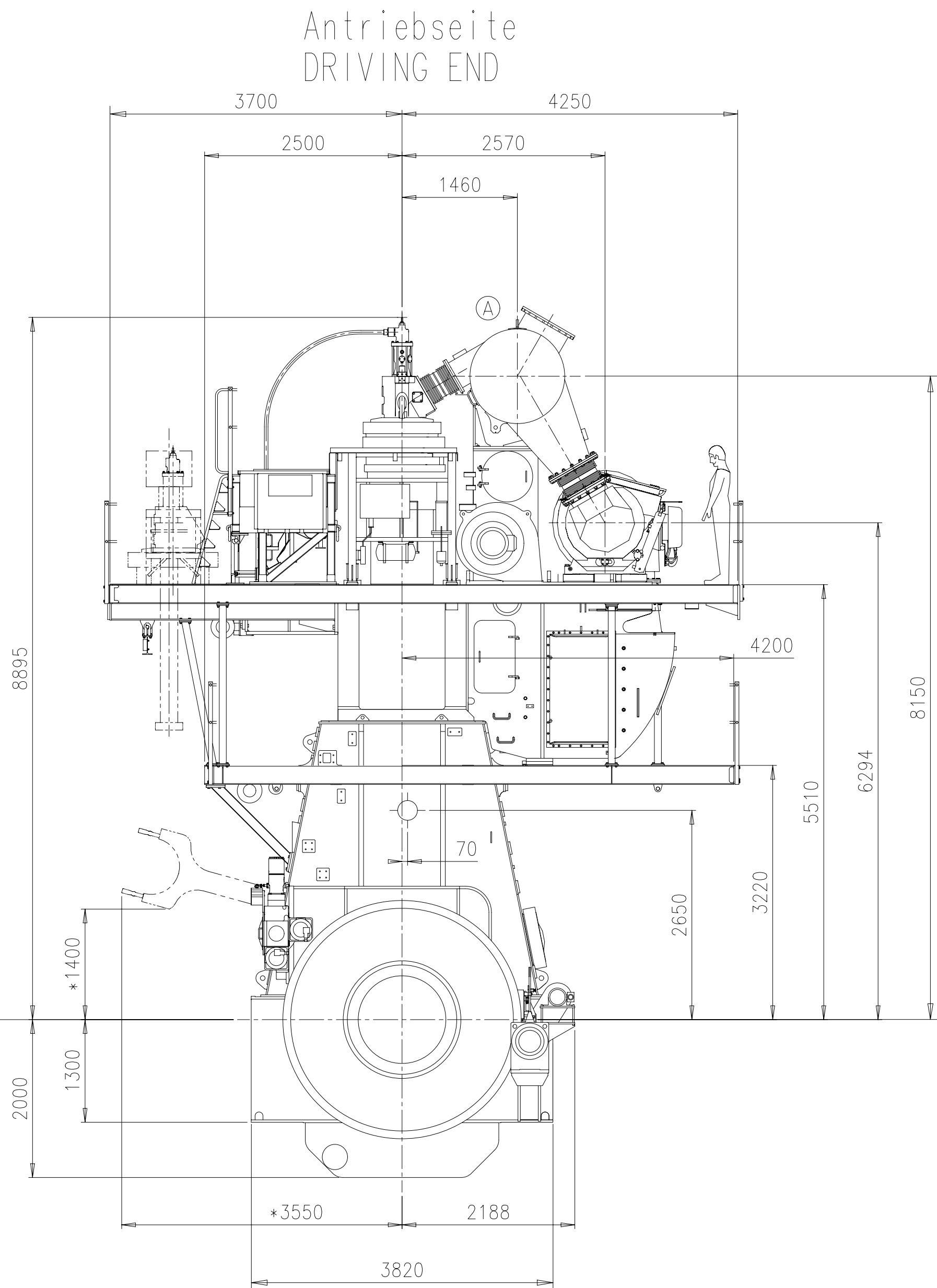
1 x TPL77-B

7-42.441 22.03.06									
Number	Drawn date	Number	Drawn date	Number	Drawn date	Number	Drawn date	Number	Drawn date
Q-Code		X X X X X		Substitute for		Scale 1:50			
Engine type		5RT-flex58T-B		Motoransichten		Drawn: B.HAAG 10.09.02			
						HAAB/FREB 22.04.03			
				ENGINE OUTLINE VIEW		Wartsila Switzerland Ltd			
Design group		ISO				CAD			
0812		JUS		1- 107.329.787		Page:		H	

Download
"DXF file"



Ausbauhoehe
OVERHAULING HEIGHT 10930



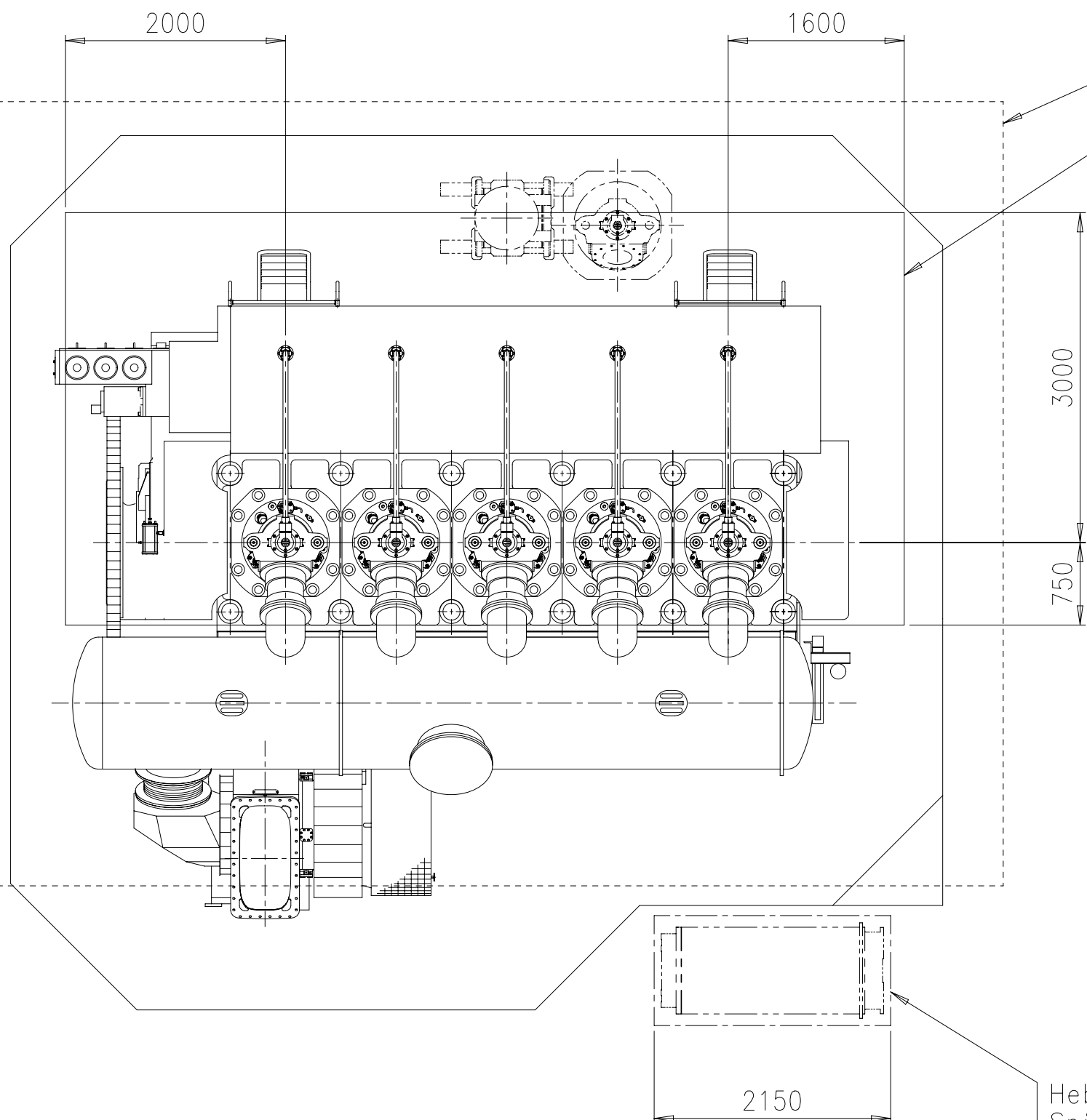
TOOLS FOR
PISTON AND CYL. COVER
DISMANTLING

SPARES

RECOMMENDED
MINIMUM

AREA TO BE COVERED BY
THE ENGINE ROOM CRANE

ENGINE ROOM
HATCH



Hebebereich für
Spülluftkühler
LIFTING AREA FOR
SCAVENGE AIR COOLER

PLEASE NOTE :

MAIN STAIRS WITH MORE THAN 4 STEPS ONLY
IN LONGITUDINAL DIRECTION OF THE ENGINE.

⊙ = ca. Schwerpunkt
AB. CENTRE OF GRAVITY

Gewicht ohne Wasser und Oel = 281 t
WEIGHT WITHOUT WATER AND OIL

Turbolader: 1xA170-L
TURBOCHARGER

SUPPLY UNIT ON AFT END

①

* = Platz fuer Demontage
SPACE FOR REMOVAL

Free space for file							Q-Code XXXXX		Main Drw. H		
							Standard ISO; JIS				
Modif.	-	EAAD084058	27.08.2012	A	EAAD096542	27.04.2021					
		Number	Drawn date		Number	Drawn date		Number	Drawn date		
			Product 5RT-flex58T-D v2		ENGINE OUTLINE VIEW						
			WINGD Winterthur Gas & Diesel		Motoransichten						
Units	mm kg	NX			Basic Material				Net Weight 0,001		
SURFACE PROTECTION SEE GROUP 0344		Made	17.08.2012 mer013 M.Erni		Scale	1:50		Size	Page	Material ID	PAAD097682
TOLERANCING PRINCIPLE ISO8015		Chkd	21.08.2012 hri004 Riser		Design Group	0812		A1	1/1	DAAD030628	Rev. A
GENERAL TOLERANCES ACCORDING TO ISO2768-mK		Appd	24.08.2012 oha005 Habicht								

WinGD-5RT-flex58T-D V2_ Engine-Outline-View

TRACK CHANGES

DATE	SUBJECT	DESCRIPTION
2018-02-26	DRAWING SET	First web upload
2021-05-27	PAAD097682	Engine Outline View for Turbocharger type 1xA170-L have been added.

DISCLAIMER

© Copyright by Winterthur Gas & Diesel Ltd.

All rights reserved. No part of this document may be reproduced or copied in any form or by any means (electronic, mechanical, graphic, photocopying, recording, taping or other information retrieval systems) without the prior written permission of the copyright owner.

THIS PUBLICATION IS DESIGNED TO PROVIDE AN ACCURATE AND AUTHORITATIVE INFORMATION WITH REGARD TO THE SUBJECT-MATTER COVERED AS WAS AVAILABLE AT THE TIME OF PRINTING. HOWEVER, THE PUBLICATION DEALS WITH COMPLICATED TECHNICAL MATTERS SUITED ONLY FOR SPECIALISTS IN THE AREA, AND THE DESIGN OF THE SUBJECT-PRODUCTS IS SUBJECT TO REGULAR IMPROVEMENTS, MODIFICATIONS AND CHANGES. CONSEQUENTLY, THE PUBLISHER AND COPYRIGHT OWNER OF THIS PUBLICATION CAN NOT ACCEPT ANY RESPONSIBILITY OR LIABILITY FOR ANY EVENTUAL ERRORS OR OMISSIONS IN THIS BOOKLET OR FOR DISCREPANCIES ARISING FROM THE FEATURES OF ANY ACTUAL ITEM IN THE RESPECTIVE PRODUCT BEING DIFFERENT FROM THOSE SHOWN IN THIS PUBLICATION. THE PUBLISHER AND COPYRIGHT OWNER SHALL UNDER NO CIRCUMSTANCES BE HELD LIABLE FOR ANY FINANCIAL CONSEQUENTIAL DAMAGES OR OTHER LOSS, OR ANY OTHER DAMAGE OR INJURY, SUFFERED BY ANY PARTY MAKING USE OF THIS PUBLICATION OR THE INFORMATION CONTAINED HEREIN.