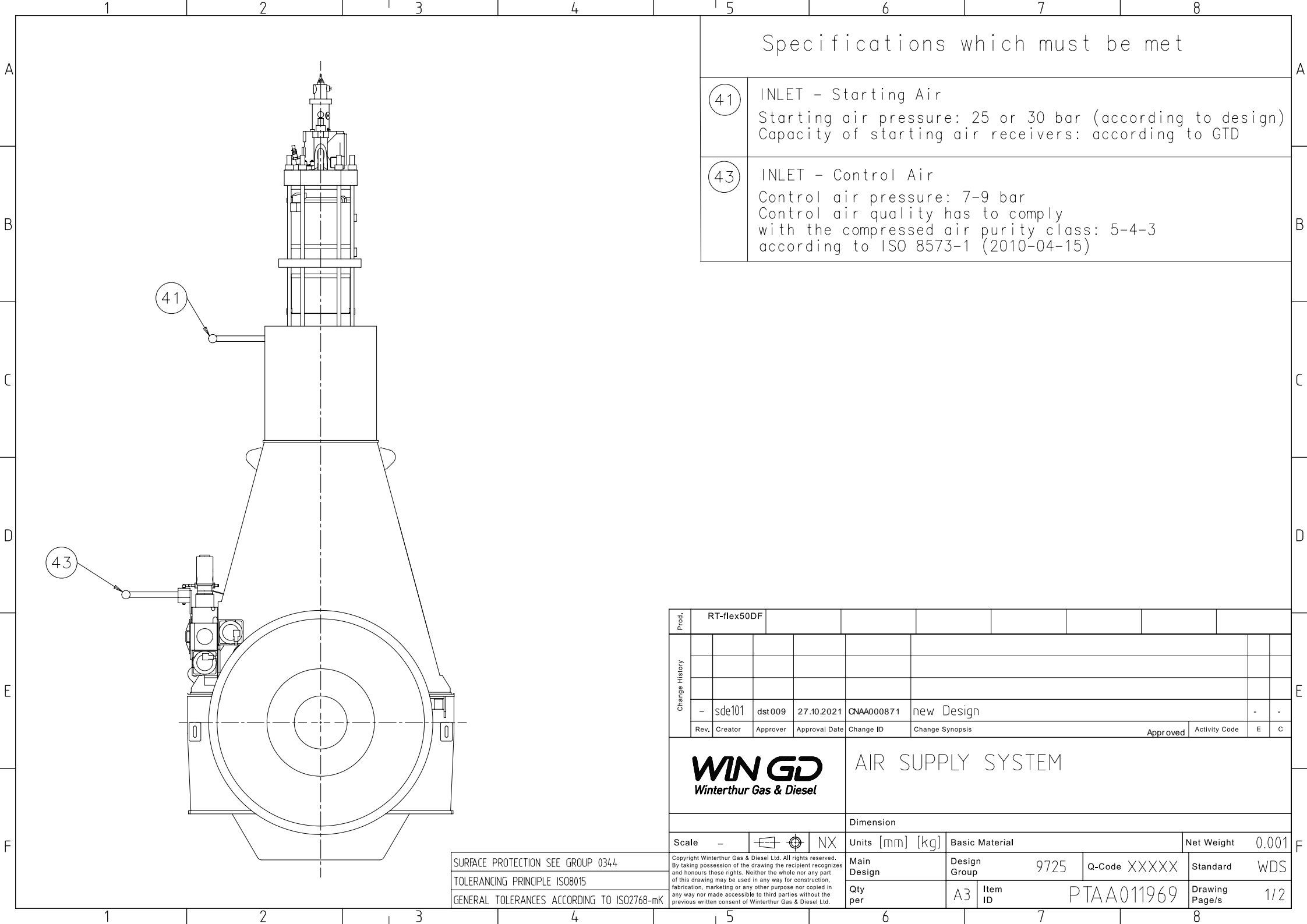


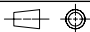
	1	2	3	4																																																														
A	<div><div>SURFACE PROTECTION SEE GROUP 0344</div><div>TOLERANCING PRINCIPLE ISO8015</div><div>GENERAL TOLERANCES ACCORDING TO ISO2768-mK</div></div> <div>Available executions</div> <table><tr><th>Execution No.</th><th>Material ID</th><th>Cylinder No.</th></tr><tr><td>1</td><td>PTAA009987</td><td>5-8</td></tr></table>				Execution No.	Material ID	Cylinder No.	1	PTAA009987	5-8	A																																																							
Execution No.	Material ID	Cylinder No.																																																																
1	PTAA009987	5-8																																																																
B					B																																																													
C					C																																																													
D	<div>NOTE</div> <p>The above executions can be configured using the Engine Configurator. Detailed guidance for the executions is provided within the Marine Installation Manual (MIM). If a specific execution of interest is not shown in the above table, then it may still be under development or not available. For further information or in case of a project-specific request, WinGD must be contacted directly.</p> <p>This publication is designed to provide accurate and authoritative information with regard to the subject-matter covered as it was available at the time of printing. However, the publication deals with complicated technical matters suited only for specialists in the area, and the design of the subject-products is subject to regular improvements, modifications and changes. Consequently, the publisher and copyright owner of this publication cannot accept any responsibility or liability for any eventual errors or omissions in this document or for discrepancies arising from the features of any actual item in the respective product being different from those shown in this publication. The publisher and copyright owner shall under no circumstances be held liable for any financial consequential damages or other loss, or any other damage or injury, suffered by any party making use of this publication or the information contained herein.</p>				D																																																													
E	<table><tr><td>Prod.</td><td colspan="2">RT-flex50DF</td><td></td><td></td><td></td><td></td><td></td><td></td><td></td></tr><tr><td rowspan="5">Change History</td><td></td><td></td><td></td><td></td><td></td><td colspan="3"></td><td></td><td></td></tr><tr><td></td><td></td><td></td><td></td><td></td><td colspan="3"></td><td></td><td></td></tr><tr><td></td><td></td><td></td><td></td><td></td><td colspan="3"></td><td></td><td></td></tr><tr><td>-</td><td>sde101</td><td>dst009</td><td>27.10.2021</td><td>CNAA000871</td><td colspan="3">new Design</td><td>-</td><td>-</td></tr><tr><td>Rev.</td><td>Creator</td><td>Approver</td><td>Approval Date</td><td>Change ID</td><td>Change Synopsis</td><td>Approved</td><td>Activity Code</td><td>E</td><td>C</td></tr></table>				Prod.	RT-flex50DF									Change History																															-	sde101	dst009	27.10.2021	CNAA000871	new Design			-	-	Rev.	Creator	Approver	Approval Date	Change ID	Change Synopsis	Approved	Activity Code	E	C	E
Prod.	RT-flex50DF																																																																	
Change History																																																																		
	-	sde101	dst009	27.10.2021	CNAA000871	new Design			-	-																																																								
	Rev.	Creator	Approver	Approval Date	Change ID	Change Synopsis	Approved	Activity Code	E	C																																																								
F	<div><div><div>WIN GD</div><div>Winterthur Gas & Diesel</div></div><div>AIR SUPPLY SYSTEM</div><div>MIDS master drawing</div></div> <div><div>separate BOM available</div><div>Dimension</div></div> <table><tr><td>Scale</td><td>-</td><td></td><td>NX</td><td>Units [mm] [kg]</td><td colspan="2">Basic Material</td><td>Net Weight</td><td>0.001</td></tr><tr><td colspan="4" rowspan="2">Copyright Winterthur Gas & Diesel Ltd. All rights reserved. By taking possession of the drawing the recipient recognizes and honours these rights. Neither the whole nor any part of this drawing may be used in any way for construction, fabrication, marketing or any other purpose nor copied in any way nor made accessible to third parties without the previous written consent of Winterthur Gas & Diesel Ltd.</td><td>Main Design</td><td>Design Group</td><td>9725</td><td>Q-Code</td><td>XXXXXX</td><td>Standard</td><td>WDS</td></tr><tr><td>Qty per</td><td>A4</td><td>Item ID</td><td colspan="2">PTAA014878</td><td>Drawing Page/s</td><td>1/1</td></tr></table>				Scale	-		NX	Units [mm] [kg]	Basic Material		Net Weight	0.001	Copyright Winterthur Gas & Diesel Ltd. All rights reserved. By taking possession of the drawing the recipient recognizes and honours these rights. Neither the whole nor any part of this drawing may be used in any way for construction, fabrication, marketing or any other purpose nor copied in any way nor made accessible to third parties without the previous written consent of Winterthur Gas & Diesel Ltd.				Main Design	Design Group	9725	Q-Code	XXXXXX	Standard	WDS	Qty per	A4	Item ID	PTAA014878		Drawing Page/s	1/1	F																																		
Scale	-		NX	Units [mm] [kg]	Basic Material		Net Weight	0.001																																																										
Copyright Winterthur Gas & Diesel Ltd. All rights reserved. By taking possession of the drawing the recipient recognizes and honours these rights. Neither the whole nor any part of this drawing may be used in any way for construction, fabrication, marketing or any other purpose nor copied in any way nor made accessible to third parties without the previous written consent of Winterthur Gas & Diesel Ltd.				Main Design	Design Group	9725	Q-Code	XXXXXX	Standard	WDS																																																								
				Qty per	A4	Item ID	PTAA014878		Drawing Page/s	1/1																																																								
	1	2	3	4																																																														

SEQ NO	QTY	Item ID	Item Name	Dimension	Standard-ID	Basic Material	Net Weight
1	1	PTAA011969	AIR SUPPLY SYSTEM				0
Prod.	5,6,7,8 RT-flex50DF						
Change History							
	-	sde101	dst 009	27.10.2021	CNAA000871	Main Design/Drawing Introduced	- -
	Rev.	Creator	Approver	Approval Date	Change ID	Change Synopsis	Approved Activity Code E C
<div>WIN GD Winterthur Gas & Diesel</div>			AIR SUPPLY SYSTEM				
Bill Of Material			Dimension				
Copyright Winterthur Gas & Diesel Ltd. All rights reserved. By taking possession of the document the recipient recognizes and honours these rights. Neither the whole nor any part of this document may be used in any way for construction, fabrication, marketing or any other purpose nor copied in any way nor made accessible to third parties without the previous written consent of Winterthur Gas & Diesel Ltd.			Units [m] [kg]		Basic Material		Net Weight 0
			Main Design Yes		Design Group 9725 Q-Code XXXXX		Standard WDS
			Qty per Engine	A4	Item ID PTAA009987		BOM Page/s 01/01



Specifications which must be met

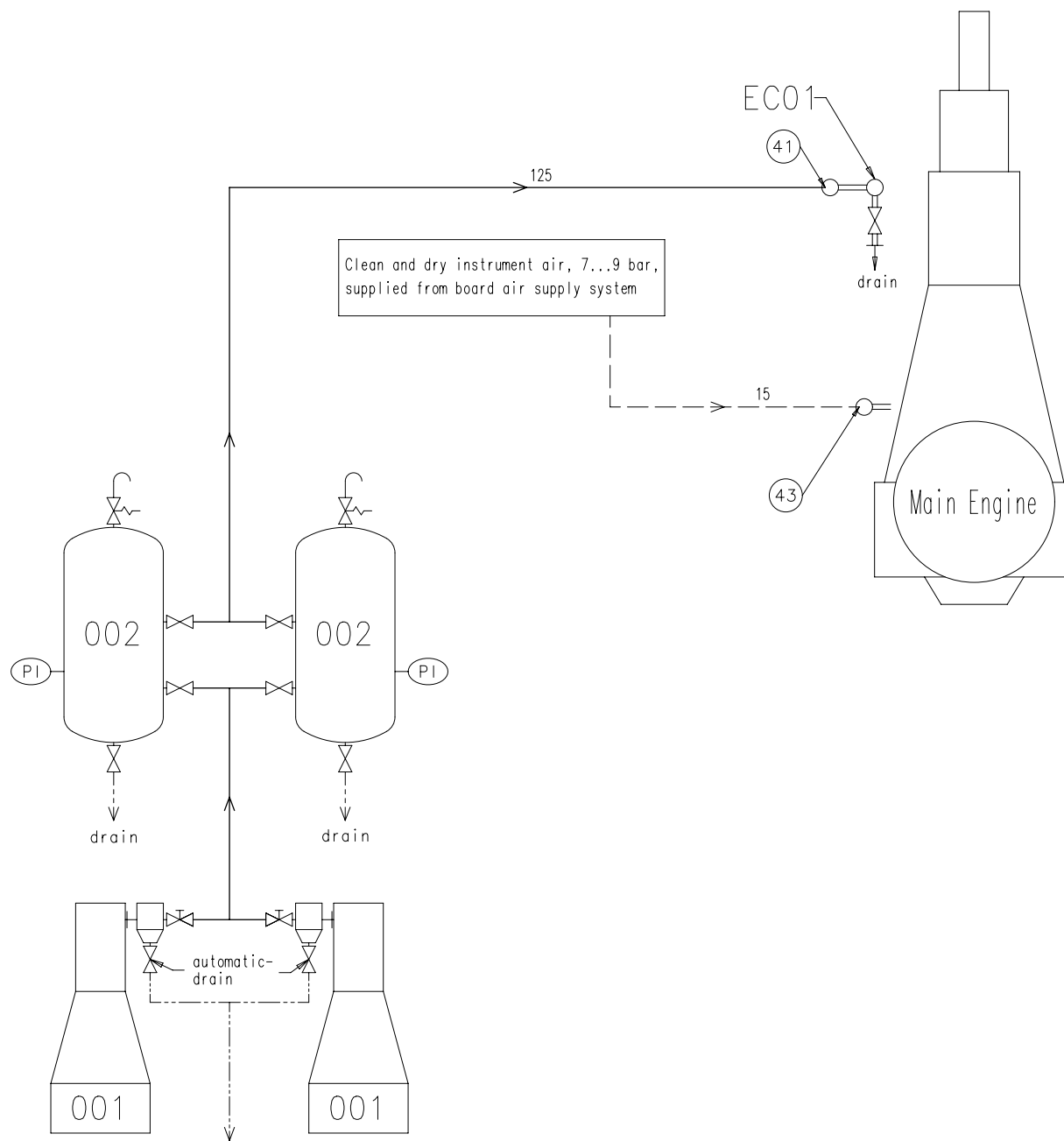
- | | |
|----|--|
| 41 | INLET - Starting Air
Starting air pressure: 25 or 30 bar (according to design)
Capacity of starting air receivers: according to GTD |
| 43 | INLET - Control Air
Control air pressure: 7-9 bar
Control air quality has to comply with the compressed air purity class: 5-4-3 according to ISO 8573-1 (2010-04-15) |

Prod.	RT-flex50DF									
Change History										
	-	sde101	dst009	27.10.2021	CNA0000871	new Design				-
	Rev.	Creator	Approver	Approval Date	Change ID	Change Synopsis			Approved	Activity Code
									E	C
WINGD Winterthur Gas & Diesel					AIR SUPPLY SYSTEM					
					Dimension					
Scale -  NX					Units [mm] [kg]	Basic Material			Net Weight	0.001
					Main Design	Design Group	9725	Q-Code XXXXX	Standard	WDS
					Qty per	A3	Item ID	PTAA011969	Drawing Page/s	1/2

SURFACE PROTECTION SEE GROUP 0344
TOLERANCING PRINCIPLE ISO8015
GENERAL TOLERANCES ACCORDING TO ISO2768-mK

Copyright Winterthur Gas & Diesel Ltd. All rights reserved.
By taking possession of the drawing the recipient recognizes and honours these rights. Neither the whole nor any part of this drawing may be used in any way for construction, fabrication, marketing or any other purpose nor copied in any way nor made accessible to third parties without the previous written consent of Winterthur Gas & Diesel Ltd.

SYSTEM PROPOSAL



Pos.	System Components *1)
001	Starting air compressor 25/30 bar (for capacity see GTD)
002	Starting air receiver 25/30 bar (for capacity see GTD)
Pos.	Engine Connections *2)
④1	INLET - Starting Air
④3	INLET - Control Air (control system and air spring)
Pos.	Engine Components *3)
EC01	Distribution pipe with automatic starting air shut-off valve

Remarks:

- Drain plugs and drain cocks where necessary

- Pipe diameters for starting air compressors and auxiliary equipment according to suppliers recommendations.

The working air inlet to the leakage collect./ washing system is shown on the relevant drawing of design group 9724.

*1) Refer to the "Pipe Connection Plan" for the execution and location of the engine pipe connections.

*2) To be delivered by external supplier and to be installed by the shipyard.

*3) To be delivered by the engine builder, i.e. already equipped on engine side.

———— Starting air feed pipes

- - - - Control air pipes

———— Ancillary equipment pipes

----- Drain pipes

===== Pipes on engine

○ Pipe connections

MIDS - WinGD RT-flex50DF – Air Supply System (DG9725)

TRACK CHANGES

DATE	SUBJECT	DESCRIPTION
2021-11-30	DRAWING SET	First web upload of separate, DF specific, drawing set

DISCLAIMER

© Copyright by Winterthur Gas & Diesel Ltd.

All rights reserved. No part of this document may be reproduced or copied in any form or by any means (electronic, mechanical, graphic, photocopying, recording, taping or other information retrieval systems) without the prior written permission of the copyright owner.

THIS PUBLICATION IS DESIGNED TO PROVIDE AN ACCURATE AND AUTHORITATIVE INFORMATION WITH REGARD TO THE SUBJECT-MATTER COVERED AS WAS AVAILABLE AT THE TIME OF PRINTING. HOWEVER, THE PUBLICATION DEALS WITH COMPLICATED TECHNICAL MATTERS SUITED ONLY FOR SPECIALISTS IN THE AREA, AND THE DESIGN OF THE SUBJECT-PRODUCTS IS SUBJECT TO REGULAR IMPROVEMENTS, MODIFICATIONS AND CHANGES. CONSEQUENTLY, THE PUBLISHER AND COPYRIGHT OWNER OF THIS PUBLICATION CAN NOT ACCEPT ANY RESPONSIBILITY OR LIABILITY FOR ANY EVENTUAL ERRORS OR OMISSIONS IN THIS BOOKLET OR FOR DISCREPANCIES ARISING FROM THE FEATURES OF ANY ACTUAL ITEM IN THE RESPECTIVE PRODUCT BEING DIFFERENT FROM THOSE SHOWN IN THIS PUBLICATION. THE PUBLISHER AND COPYRIGHT OWNER SHALL UNDER NO CIRCUMSTANCES BE HELD LIABLE FOR ANY FINANCIAL CONSEQUENTIAL DAMAGES OR OTHER LOSS, OR ANY OTHER DAMAGE OR INJURY, SUFFERED BY ANY PARTY MAKING USE OF THIS PUBLICATION OR THE INFORMATION CONTAINED HEREIN.