

DOWNLOAD
"DXF FILE"

Abgasseite
EXHAUST SIDE

Antriebsseite
DRIVING END

LIFTING AREA FOR
SCAVENGE AIR COOLER

Antriebsseite
DRIVING END

Freies Ende
FREE END

TOOLS FOR
PISTON AND CYL. COVER
DISMANTLING

SPARES

RECOMMENDED

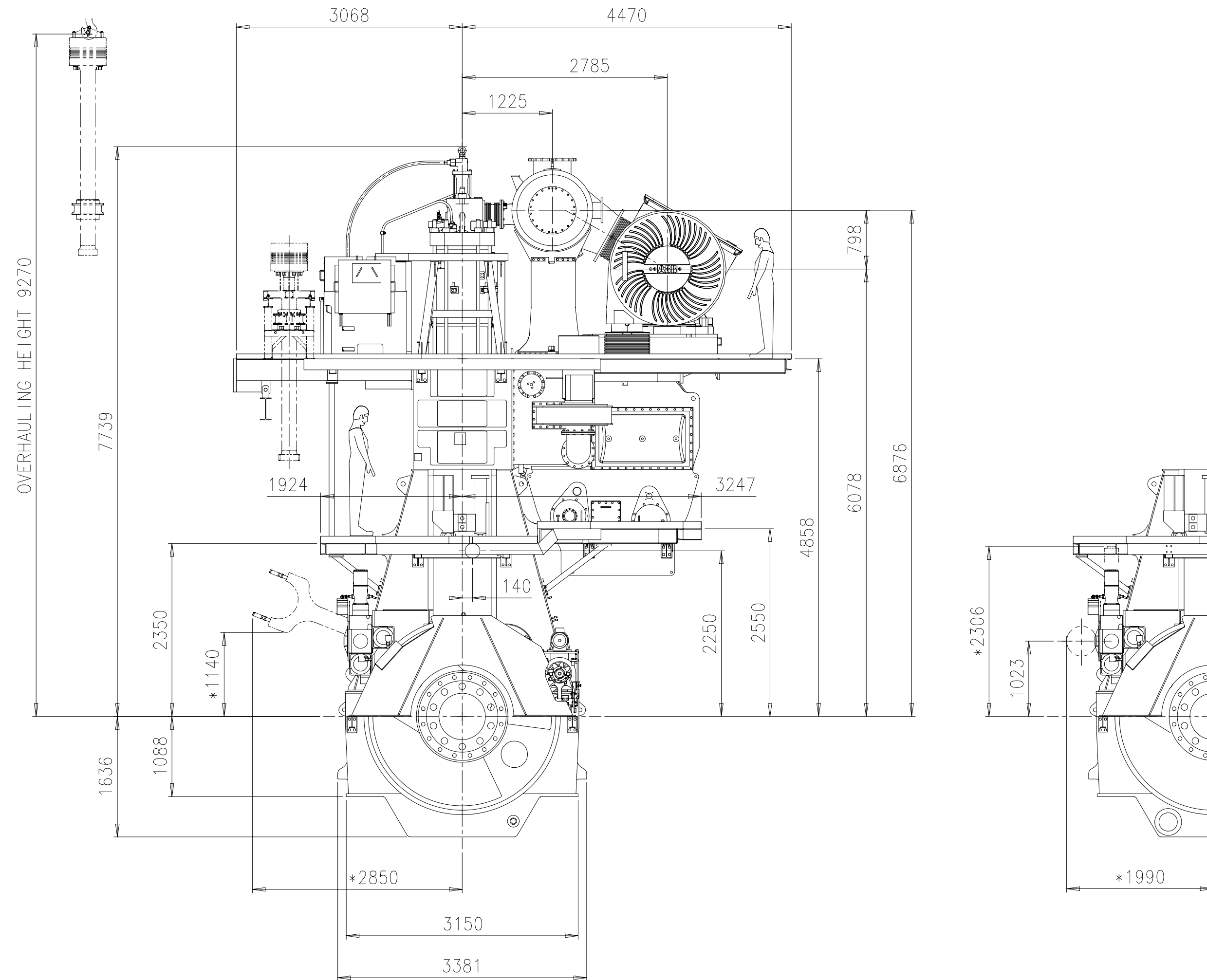
MINIMUM

AREA TO BE COVERED BY
THE ENGINE ROOM CRANE

For safety and timesaving reasons it will
be an advantage to increase the minimum area
for moving the heavy components between the
storing places and the engine or to the engine
room hatch by using the engine room crane.

LIFTING AREA FOR
SCAVENGE AIR COOLER

ENGINE ROOM
HATCH



TURBOCHARGER 1xA175

ca. Schwerpunkt
APPROX. CENTRE OF GRAVITY

* Platz fuer Demontage
SPACE FOR REMOVAL

Gewicht ohne Wasser und Oel= 255 t
WEIGHT WITHOUT WATER AND OIL

PLEASE NOTE:

MAIN STAIRS WITH MORE THAN 4 STEPS ONLY
IN LONGITUDINAL DIRECTION OF THE ENGINE.

WINGD
Winterthur Gas & Diesel

Product
TRT-flex50DF (STD)

ENGINE OUTLINE VIEW

Motoransichten

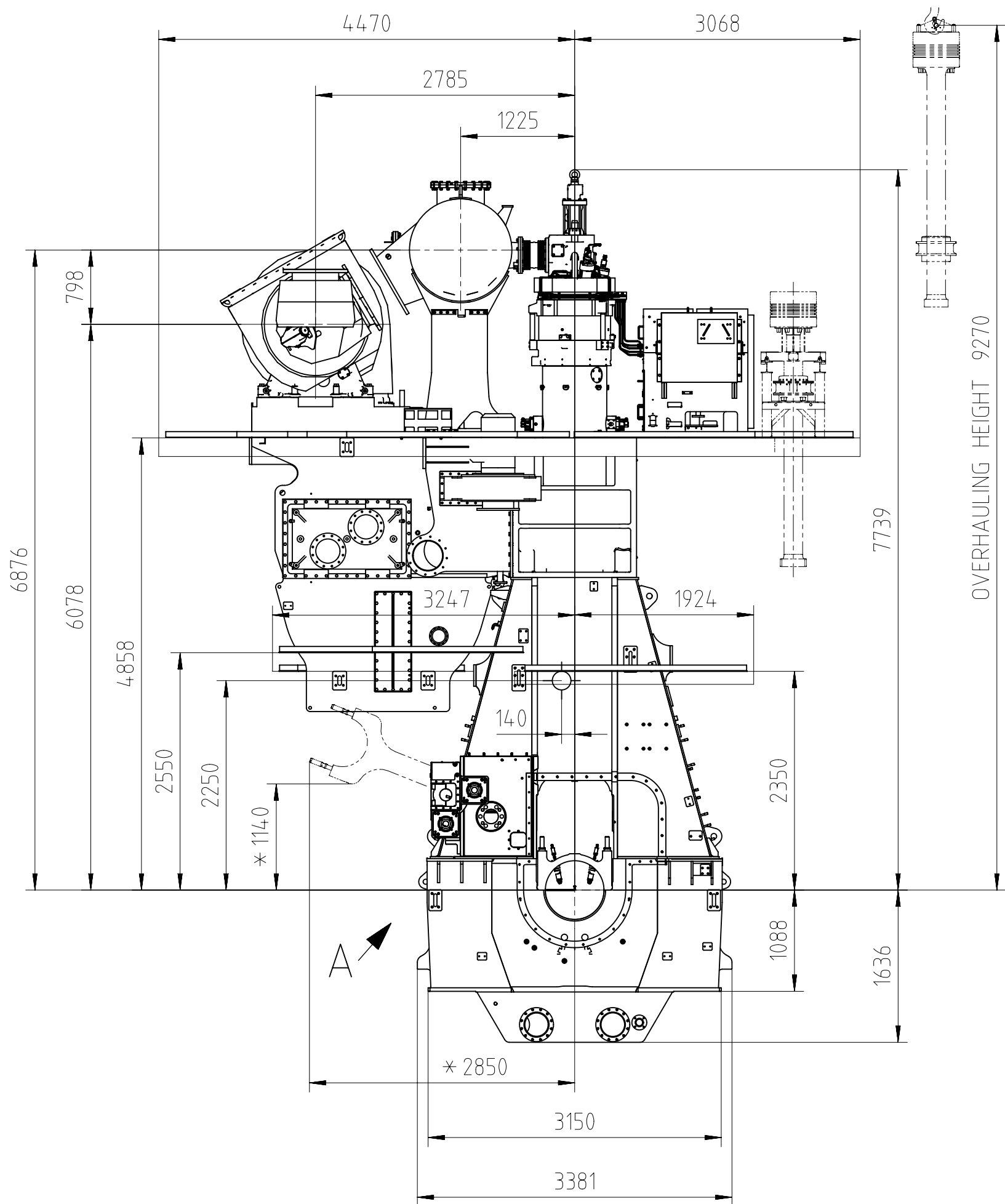
(B) DIMENSIONS ONLY FOR REFERENCE
THIS OUTLINE DRAWING CAN NOT BE USED FOR FINAL DESIGN.
PLEASE TAKE CORRESPONDING DESIGN GROUP

SURFACE PROTECTION SEE GROUP 0344
TOLERANCING PRINCIPLE ISO8015
GENERAL TOLERANCES ACCORDING TO ISO2768-mK

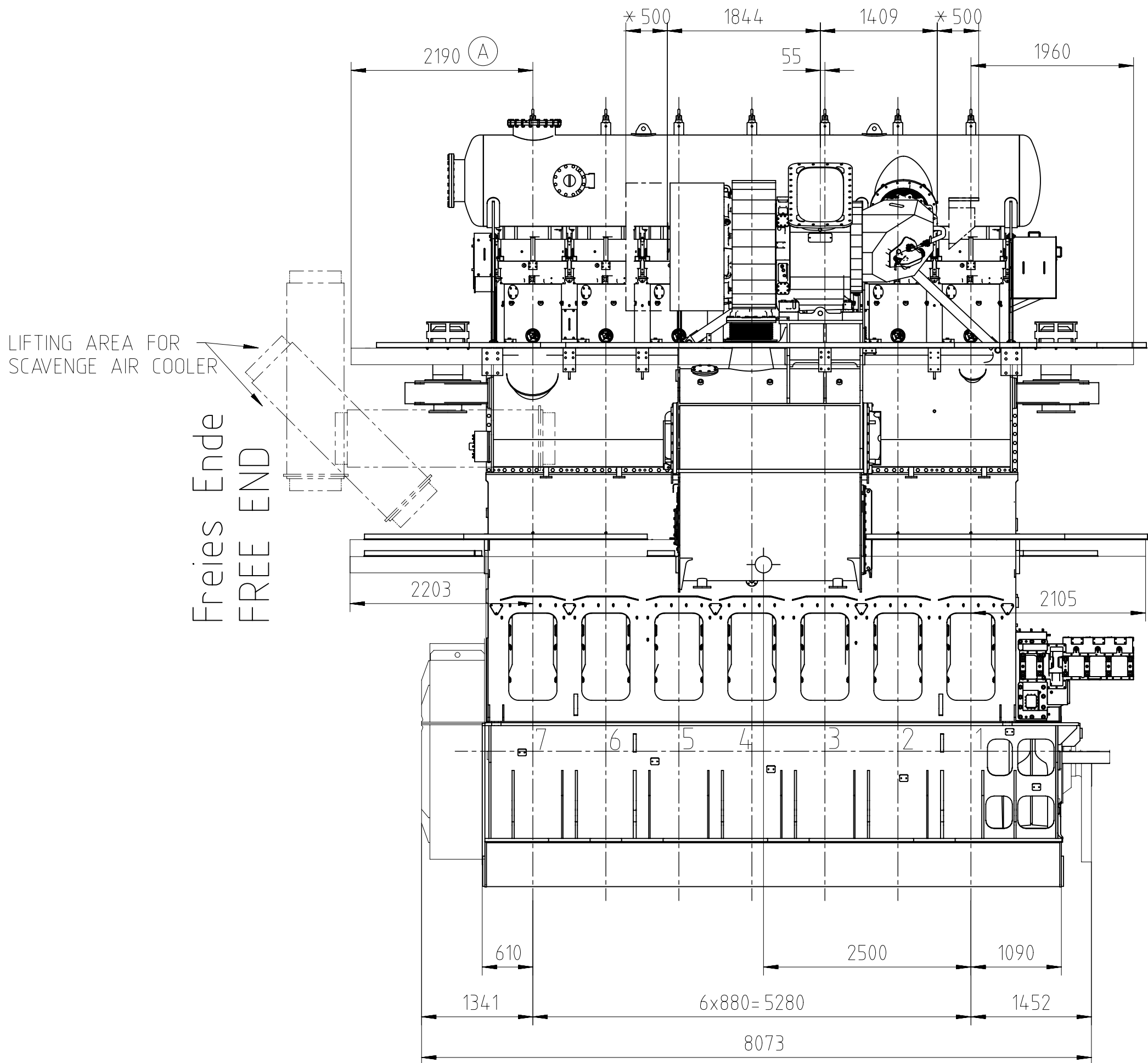
Units	mm kg	NX	Basic Material	Net Weight	0.000
Made	10.06.2014	A Chiwacumar	Scale 1:50	Size	A1
Chkd	12.01.2015	mix09 Liebhart	Design Group	Page	1/1
Appd	12.01.2015	bha009 Haag	Drawing ID	DAAD054810	Rev. C
				Material ID	PAAD172893

DOWNLOAD
"DXF FILE"

Antriebsseite
DRIVING END

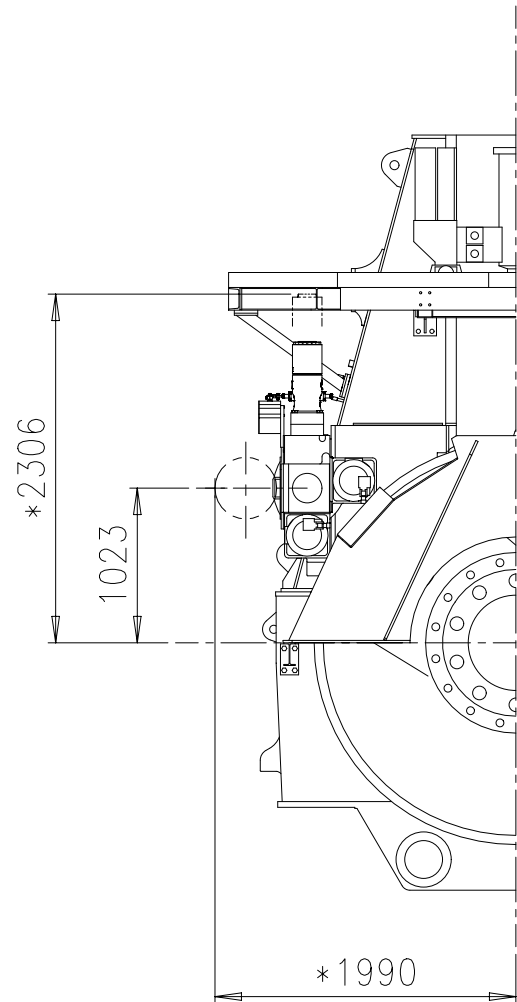


Abgasseite
EXHAUST SIDE



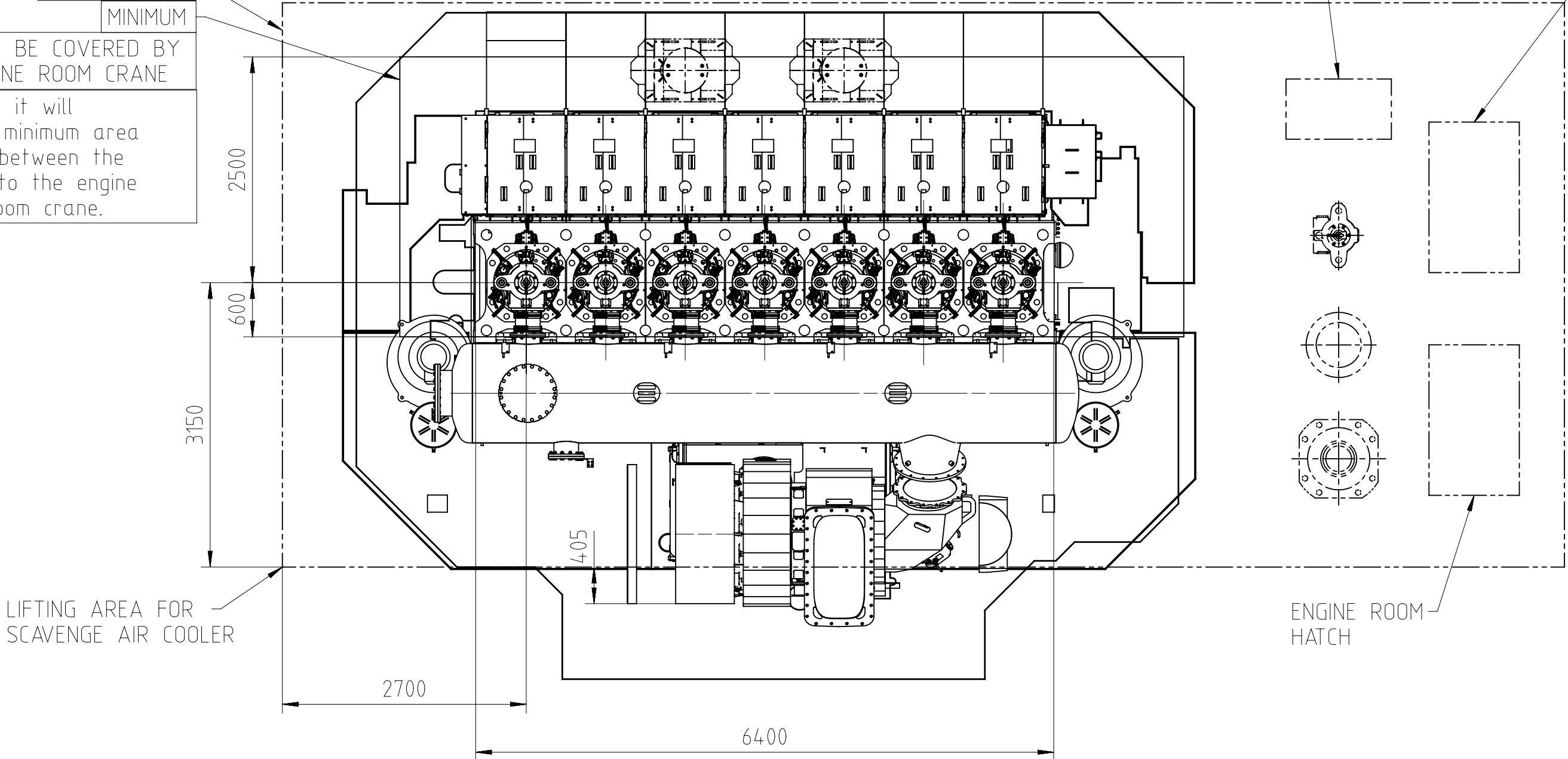
Antriebsseite
DRIVING END

VIEW A



RECOMMENDED
MINIMUM
AREA TO BE COVERED BY
THE ENGINE ROOM CRANE

For safety and timesaving reasons it will be an advantage to increase the minimum area for moving the heavy components between the storing places and the engine or to the engine room hatch by using the engine room crane.



TURBOCHARGER 1x A175-L

ca. Schwerpunkt
APPROX. CENTRE OF GRAVITY

* Platz fuer Demontage
SPACE FOR REMOVAL

Gewicht ohne Wasser und Oel= 255 t
WEIGHT WITHOUT WATER AND OIL

PLEASE NOTE:
MAIN STAIRS WITH MORE THAN 4 STEPS ONLY
IN LONGITUDINAL DIRECTION OF THE ENGINE.

WINGD
Winterthur Gas & Diesel

Product 7RT-flex50DF (LEFT) ENGINE OUTLINE VIEW

Motoransichten

DIMENSIONS ONLY FOR REFERENCE
THIS OUTLINE DRAWING CAN NOT BE USED FOR FINAL DESIGN.
PLEASE TAKE CORRESPONDING DESIGN GROUP

SURFACE PROTECTION SEE GROUP 0344
TOLERANCING PRINCIPLE ISO8015
GENERAL TOLERANCES ACCORDING TO ISO2768-mK

Units	mm kg	NX	Basic Material	Net Weight 0,000
Made	14.08.2019	Jaimin Prajapati	Scale 1:50	Size A1
Chkd	16.08.2019	sth017 Thalmann	Design Group	Page 1/1
Appd	16.08.2019	mda006 Dacic	Drawing ID	DAAD119796
				Material ID PAAD335708
				Rev. A

Approved
H
J
K
L
M
DIMENSIONAL DRAWING - Confidential

WinGD-7RT-flex50DF_Engine Outline Views

TRACK CHANGES

DATE	SUBJECT	DESCRIPTION
2018-02-26	DRAWING SET	First web upload
2019-11-20	DAAD054810, DAAD119796.	Revised Engine outline view for Turbocharger type 1 x A175 has been updated, New Engine outline view for Turbocharger type 1 x A175-L has been added.
2021-05-12	PAAD172893 PAAD335708	Revised Engine outline view for Turbocharger type 1 x A175 has been updated, Revised Engine outline view for Turbocharger type 1 x A175-L has been updated.

DISCLAIMER

© Copyright by Winterthur Gas & Diesel Ltd.

All rights reserved. No part of this document may be reproduced or copied in any form or by any means (electronic, mechanical, graphic, photocopying, recording, taping or other information retrieval systems) without the prior written permission of the copyright owner.

THIS PUBLICATION IS DESIGNED TO PROVIDE AN ACCURATE AND AUTHORITATIVE INFORMATION WITH REGARD TO THE SUBJECT-MATTER COVERED AS WAS AVAILABLE AT THE TIME OF PRINTING. HOWEVER, THE PUBLICATION DEALS WITH COMPLICATED TECHNICAL MATTERS SUITED ONLY FOR SPECIALISTS IN THE AREA, AND THE DESIGN OF THE SUBJECT-PRODUCTS IS SUBJECT TO REGULAR IMPROVEMENTS, MODIFICATIONS AND CHANGES. CONSEQUENTLY, THE PUBLISHER AND COPYRIGHT OWNER OF THIS PUBLICATION CAN NOT ACCEPT ANY RESPONSIBILITY OR LIABILITY FOR ANY EVENTUAL ERRORS OR OMISSIONS IN THIS BOOKLET OR FOR DISCREPANCIES ARISING FROM THE FEATURES OF ANY ACTUAL ITEM IN THE RESPECTIVE PRODUCT BEING DIFFERENT FROM THOSE SHOWN IN THIS PUBLICATION. THE PUBLISHER AND COPYRIGHT OWNER SHALL UNDER NO CIRCUMSTANCES BE HELD LIABLE FOR ANY FINANCIAL CONSEQUENTIAL DAMAGES OR OTHER LOSS, OR ANY OTHER DAMAGE OR INJURY, SUFFERED BY ANY PARTY MAKING USE OF THIS PUBLICATION OR THE INFORMATION CONTAINED HEREIN.