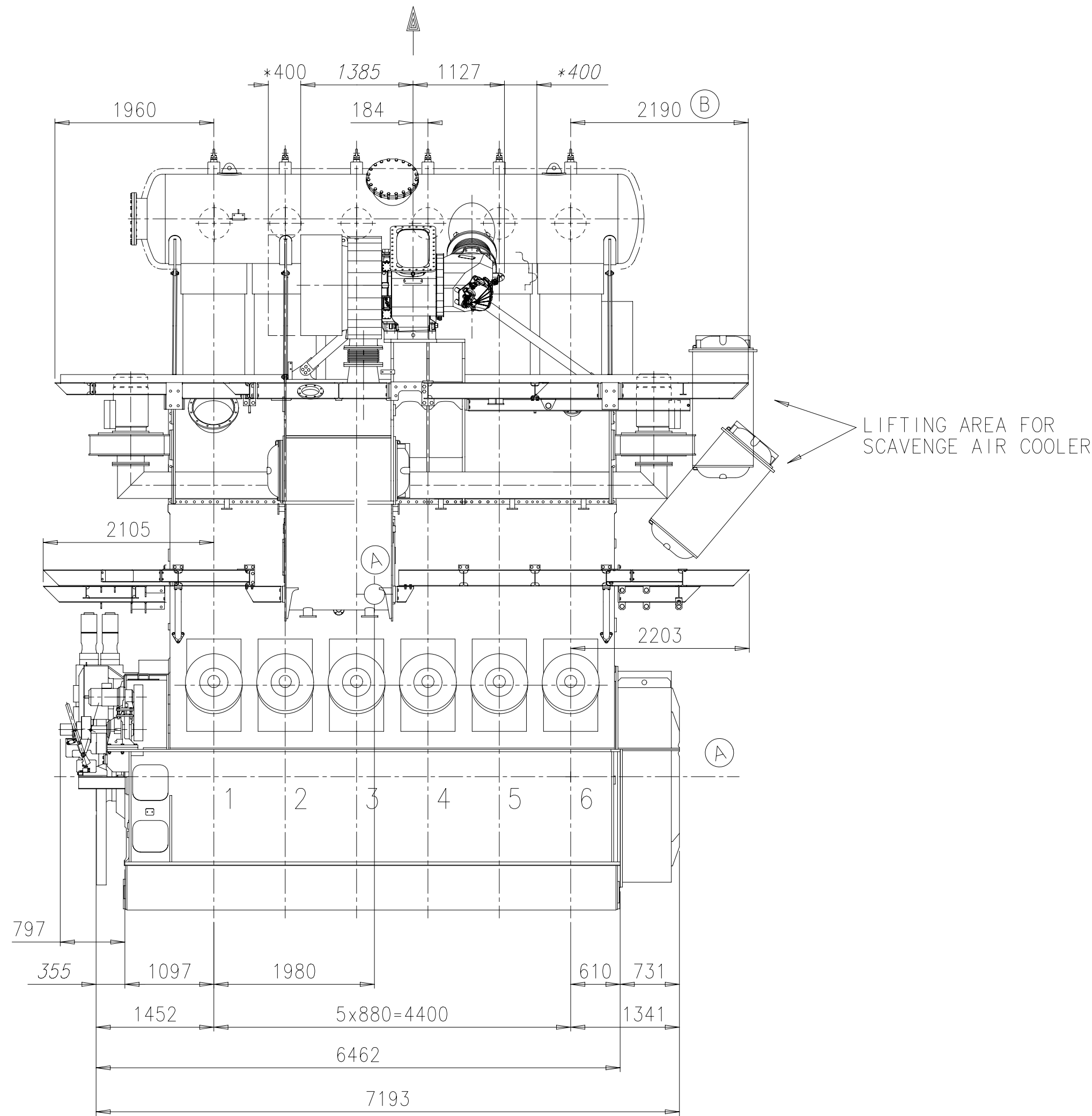
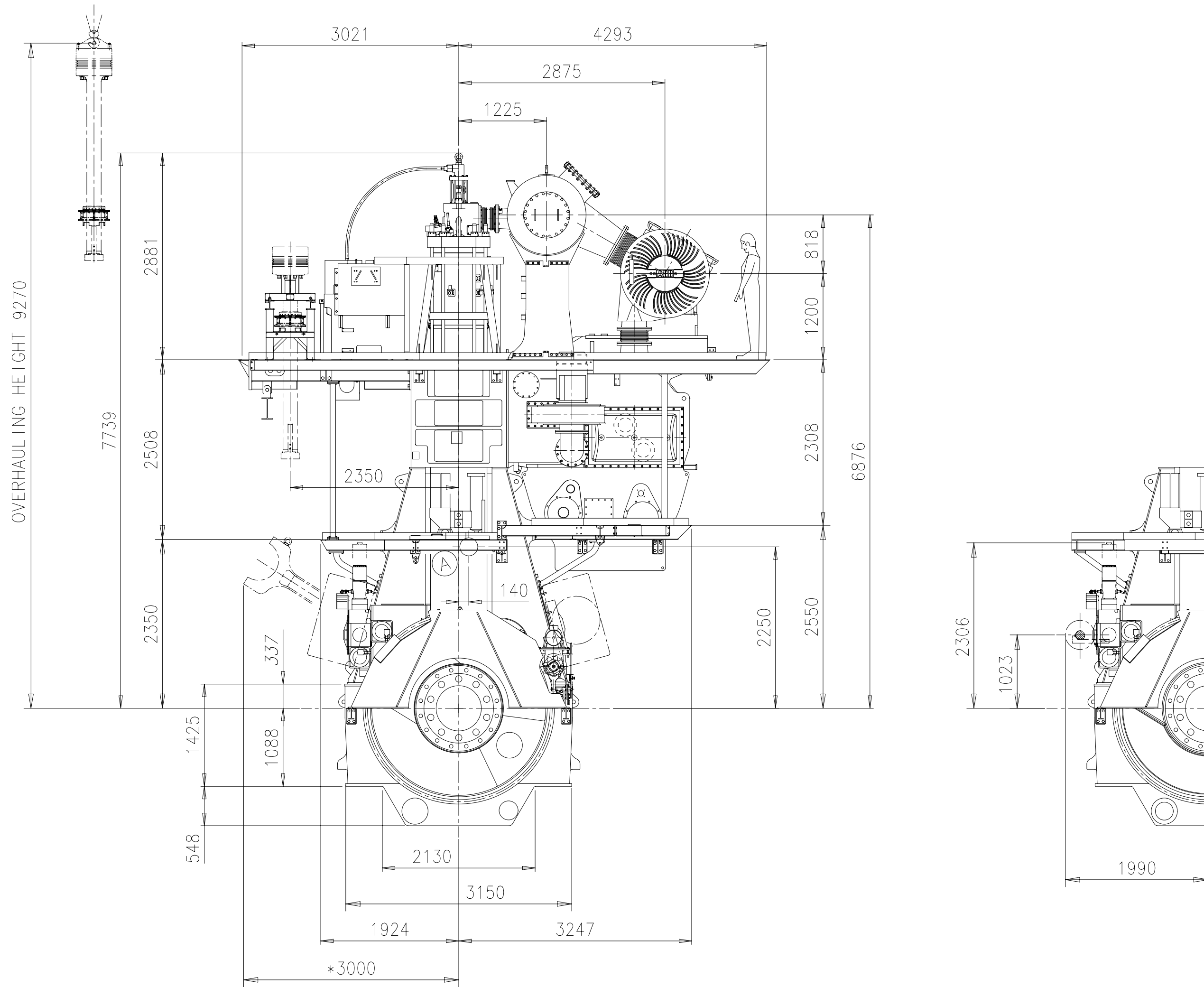


DOWNLOAD
"DXF FILE"

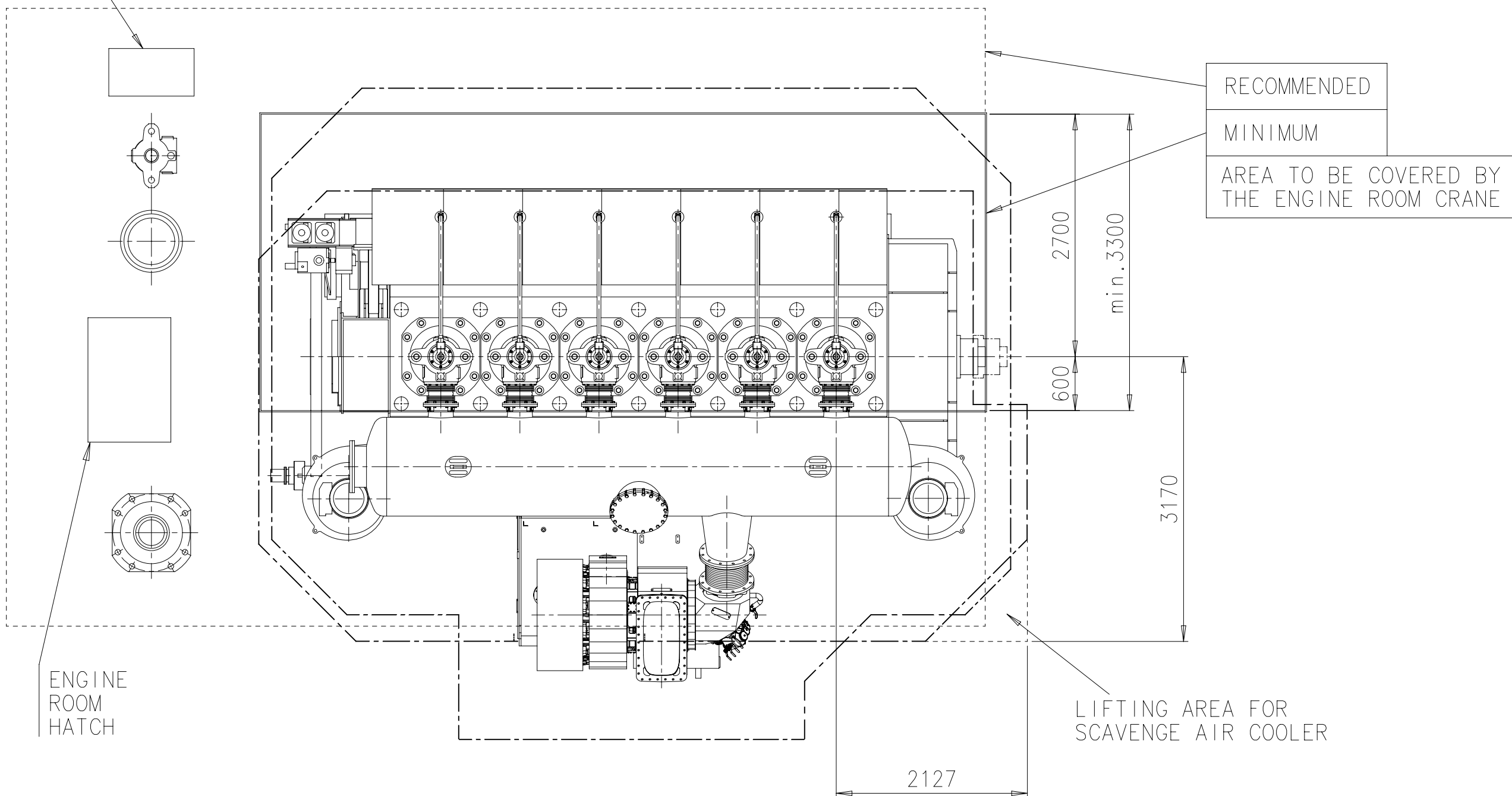
Abgasseite
EXHAUST SIDE



Antriebseite
DRIVING END



SPARES



RECOMMENDED
MINIMUM

AREA TO BE COVERED BY
THE ENGINE ROOM CRANE

ENGINE
ROOM
HATCH

LIFTING AREA FOR
SCAVENGE AIR COOLER

Turbolader: 1xA265-L
TURBOCHARGER

Gewicht ohne Wasser und Oel = 225 t
WEIGHT WITHOUT WATER AND OIL

* = Platz fuer Demontage
SPACE FOR REMOVAL

ca. Schwerpunkt
APPROX. CENTRE OF GRAVITY

PLEASE NOTE:

MAIN STAIRS WITH MORE THAN 4 STEPS ONLY
IN LONGITUDINAL DIRECTION OF THE ENGINE.

WINGD
Winterthur Gas & Diesel

Product
6RT-flex50DF

ENGINE OUTLINE VIEW

Motoransichten

Units	mm kg	NX	Basic Material	Net Weight 0.001
Made	09.09.2013	hri004	H.Riser	Scale 1:50
Chkd	04.11.2013	awu004	Wüms	Design Group
Appd	04.11.2013	bha009	Haag	0812
Size	A1	Page 1/1	Material ID	PAAD140034
Drawing ID	DAAD043594	Rev.	B	

SURFACE PROTECTION SEE GROUP 0344	Modif.	A	EAAD085829	11.04.2016	B	EAAD096095	10.03.2021
TOLERANCING PRINCIPLE ISO8015	Number	Drawn date	Number	Drawn date	Number	Drawn date	Number
GENERAL TOLERANCES ACCORDING TO ISO2768-mK	Number	Drawn date	Number	Drawn date	Number	Drawn date	Number

WinGD-6RT-flex50DF_Engine-outline-views

TRACK CHANGES

DATE	SUBJECT	DESCRIPTION
2018-02-26	DRAWING SET	First web upload
2019-11-20	DAAD110626	New Engine outline view for Turbocharger type 1 x A170 has been added.
2021-05-19	PAAD140034 PAAD315619	Revised Engine Outline Views for Turbocharger type 1xA170, and 1xA265 have been updated.

DISCLAIMER

© Copyright by Winterthur Gas & Diesel Ltd.

All rights reserved. No part of this document may be reproduced or copied in any form or by any means (electronic, mechanical, graphic, photocopying, recording, taping or other information retrieval systems) without the prior written permission of the copyright owner.

THIS PUBLICATION IS DESIGNED TO PROVIDE AN ACCURATE AND AUTHORITATIVE INFORMATION WITH REGARD TO THE SUBJECT-MATTER COVERED AS WAS AVAILABLE AT THE TIME OF PRINTING. HOWEVER, THE PUBLICATION DEALS WITH COMPLICATED TECHNICAL MATTERS SUITED ONLY FOR SPECIALISTS IN THE AREA, AND THE DESIGN OF THE SUBJECT-PRODUCTS IS SUBJECT TO REGULAR IMPROVEMENTS, MODIFICATIONS AND CHANGES. CONSEQUENTLY, THE PUBLISHER AND COPYRIGHT OWNER OF THIS PUBLICATION CAN NOT ACCEPT ANY RESPONSIBILITY OR LIABILITY FOR ANY EVENTUAL ERRORS OR OMISSIONS IN THIS BOOKLET OR FOR DISCREPANCIES ARISING FROM THE FEATURES OF ANY ACTUAL ITEM IN THE RESPECTIVE PRODUCT BEING DIFFERENT FROM THOSE SHOWN IN THIS PUBLICATION. THE PUBLISHER AND COPYRIGHT OWNER SHALL UNDER NO CIRCUMSTANCES BE HELD LIABLE FOR ANY FINANCIAL CONSEQUENTIAL DAMAGES OR OTHER LOSS, OR ANY OTHER DAMAGE OR INJURY, SUFFERED BY ANY PARTY MAKING USE OF THIS PUBLICATION OR THE INFORMATION CONTAINED HEREIN.