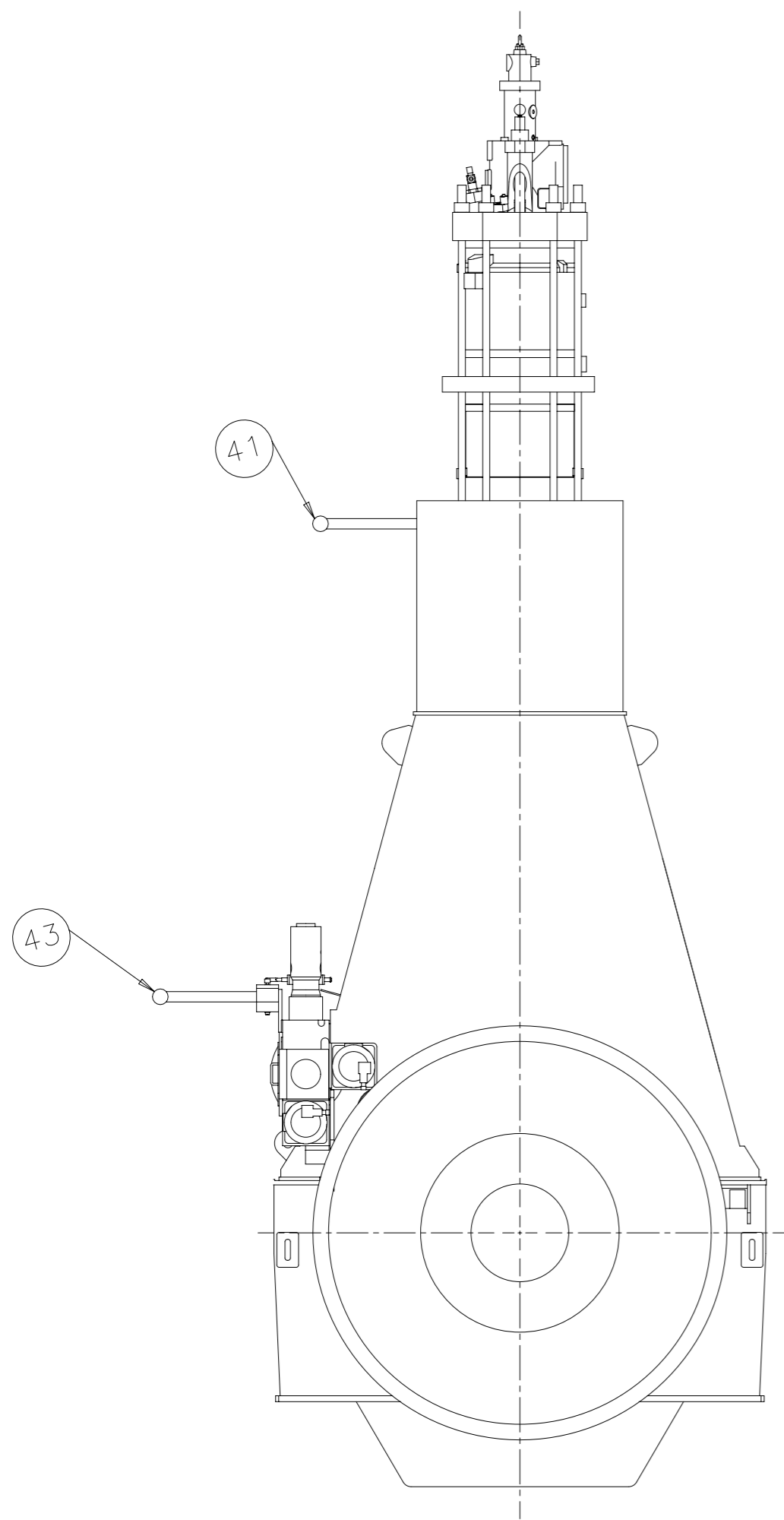


1 2 3 4 5 6 7 8

A
B
C
D
E
F



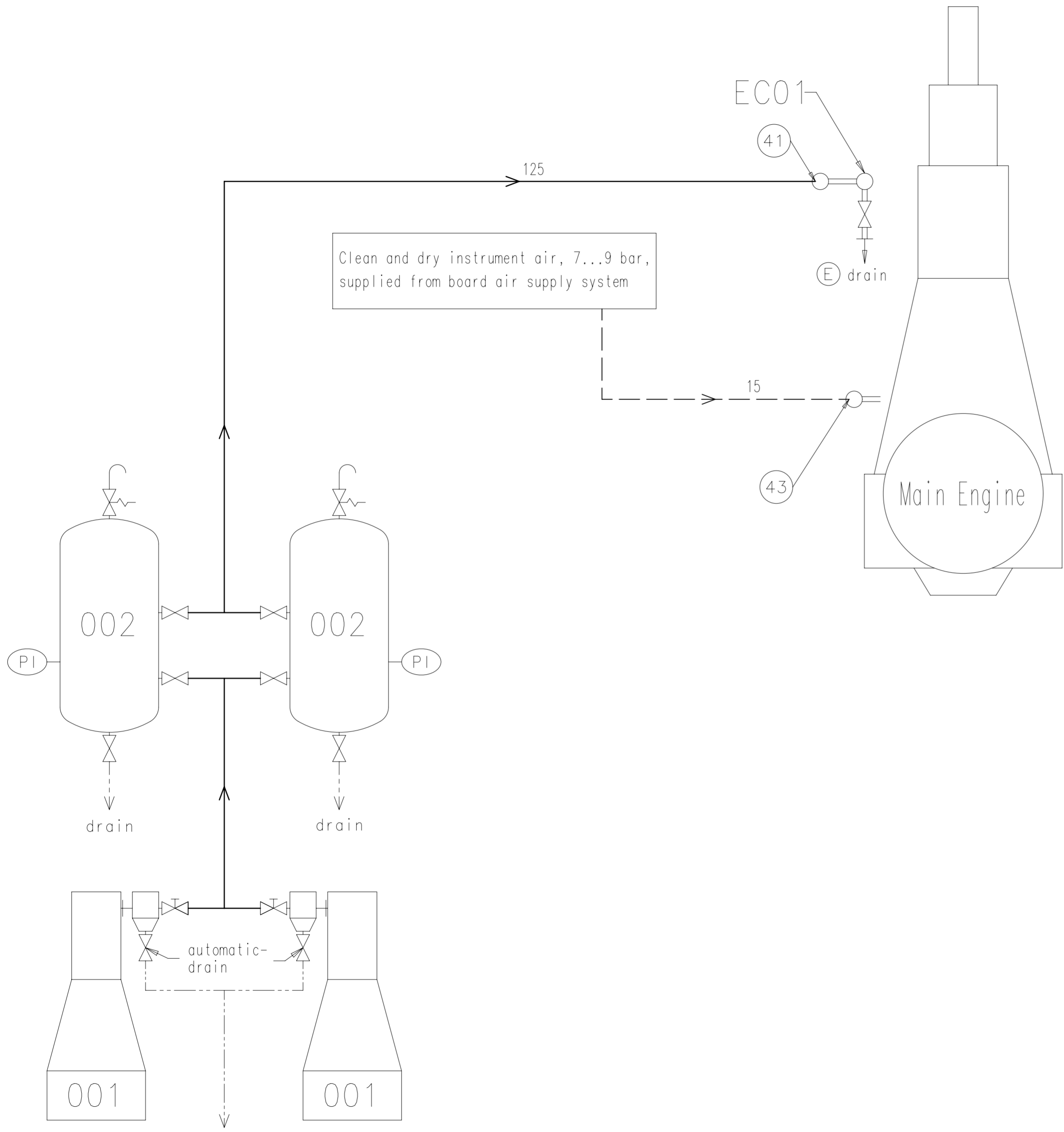
Specifications which must be met

- E
41
INLET - Starting Air
Starting air pressure: 25 or 30 bar (according to design)
Capacity of starting air receivers see GTD
- E
43
INLET - Control Air
Control air pressure: 7-9 bar
Control air quality has to comply with the compressed air purity class: 2-4-2 according to ISO 8573-1 (2010-04-15)

Free space for litc.									Q-Code XXXXXX	Main Drw. H		
									Standard ISO; JIS			
Modif.	B	7-77.358	05.11.2009	C	EAAD082762	13.12.2011	D	EAAD084882	06.11.2013	E	EAAD088933	29.01.2018
		Number	Drawn date		Number	Drawn date		Number	Drawn date		Number	Drawn date
 Winterthur Gas & Diesel		Product			STARTING AIR SYSTEM Anlassluftsystem							
		5-8RT-flex50 5-8RT-flex50-B 5-8RT-flex50-D 5-8RT-flex50DF										
Units		mm kg		NX		Basic Material			Net Weight 0,001			
SURFACE PROTECTION SEE GROUP 0344		Made 18.03.2004 S.NATALY			Scale -		Size A3	Page 1/2	Material ID PAAD046047			
TOLERANCING PRINCIPLE ISO8015		Chkd			Design Group 9725		Drawing ID 107.340.766			Rev. E		
GENERAL TOLERANCES ACCORDING TO ISO2768-mK		Appd 22.07.2004 SNA001			9725		107.340.766			E		

Approved
D
C
B
A
F
E
D
C
B
A
DID - DIMENSIONAL DRAWING - Confidential

SYSTEM PROPOSAL



Pos.	System Components *1)
001	Starting air compressor 25/30 bar (for capacity see GTD)
002	Starting air receiver 25/30 bar (for capacity see GTD)
Pos.	Engine Connections *2)
④1	INLET - Starting Air
④3	INLET - Control Air (control system and air spring)
Pos.	Engine Components *3)
ECO1	Distribution pipe with automatic starting air shut-off valve
<p>Remarks: ④</p> <ul style="list-style-type: none"> - Drain plugs and drain cocks where necessary - Pipe diameters for starting air compressors and auxiliary equipment according to suppliers recommendations. <p>The working air inlet to the leakage collect./ washing system is shown on the relevant drawing of design group 9724.</p> <p>*1) Refer to the "Pipe Connection Plan" for the execution and location of the engine pipe connections.</p> <p>*2) To be delivered by external supplier and to be installed by the shipyard.</p> <p>*3) To be delivered by the engine builder, i.e. already equipped on engine side.</p>	
<p>— Starting air feed pipes</p> <p>- - - Control air pipes</p> <p>— Ancillary equipment pipes</p> <p>- - - - - Drain pipes</p> <p>== Pipes on engine</p> <p>○ Pipe connections</p>	

Free space for lic.	Q-Code XXXXX		Main Drw. H
Modif.	B 7-77.358	C EAAD082762	D EAAD084882
Number	05.11.2009	13.12.2011	06.11.2013
Drawn date	E EAAD088933	29.01.2018	
Number	Drawn date	Number	Drawn date
		Product 5-8RT-flex50 5-8RT-flex50-B 5-8RT-flex50-D 5-8RT-flex50DF	STARTING AIR SYSTEM Anlassluftsystem
Units	mm kg	NX	Basic Material
Net Weight	0,001		

SURFACE PROTECTION SEE GROUP 0344	Made	18.03.2004 S.NATALY	Scale	-	Size	A2	Page	2/2	Material ID	PAAD046047
TOLERANCING PRINCIPLE ISO8015	Chkd		Design Group	9725	Drawing ID	107.340.766	Rev.	E		
GENERAL TOLERANCES ACCORDING TO ISO2768-mK	Appd	22.07.2004 SNA001								

MIDS_WinGD-RT-flex50-D_STARTING-AIR-SYSTEM

TRACK CHANGES

DATE	SUBJECT	DESCRIPTION
2017-02-24	DRAWING SET	First web upload
2018-03-26	107.340.766	Starting air – new drawing revision

DISCLAIMER

© Copyright by Winterthur Gas & Diesel Ltd.

All rights reserved. No part of this document may be reproduced or copied in any form or by any means (electronic, mechanical, graphic, photocopying, recording, taping or other information retrieval systems) without the prior written permission of the copyright owner.

THIS PUBLICATION IS DESIGNED TO PROVIDE AN ACCURATE AND AUTHORITATIVE INFORMATION WITH REGARD TO THE SUBJECT-MATTER COVERED AS WAS AVAILABLE AT THE TIME OF PRINTING. HOWEVER, THE PUBLICATION DEALS WITH COMPLICATED TECHNICAL MATTERS SUITED ONLY FOR SPECIALISTS IN THE AREA, AND THE DESIGN OF THE SUBJECT-PRODUCTS IS SUBJECT TO REGULAR IMPROVEMENTS, MODIFICATIONS AND CHANGES. CONSEQUENTLY, THE PUBLISHER AND COPYRIGHT OWNER OF THIS PUBLICATION CAN NOT ACCEPT ANY RESPONSIBILITY OR LIABILITY FOR ANY EVENTUAL ERRORS OR OMISSIONS IN THIS BOOKLET OR FOR DISCREPANCIES ARISING FROM THE FEATURES OF ANY ACTUAL ITEM IN THE RESPECTIVE PRODUCT BEING DIFFERENT FROM THOSE SHOWN IN THIS PUBLICATION. THE PUBLISHER AND COPYRIGHT OWNER SHALL UNDER NO CIRCUMSTANCES BE HELD LIABLE FOR ANY FINANCIAL CONSEQUENTIAL DAMAGES OR OTHER LOSS, OR ANY OTHER DAMAGE OR INJURY, SUFFERED BY ANY PARTY MAKING USE OF THIS PUBLICATION OR THE INFORMATION CONTAINED HEREIN.