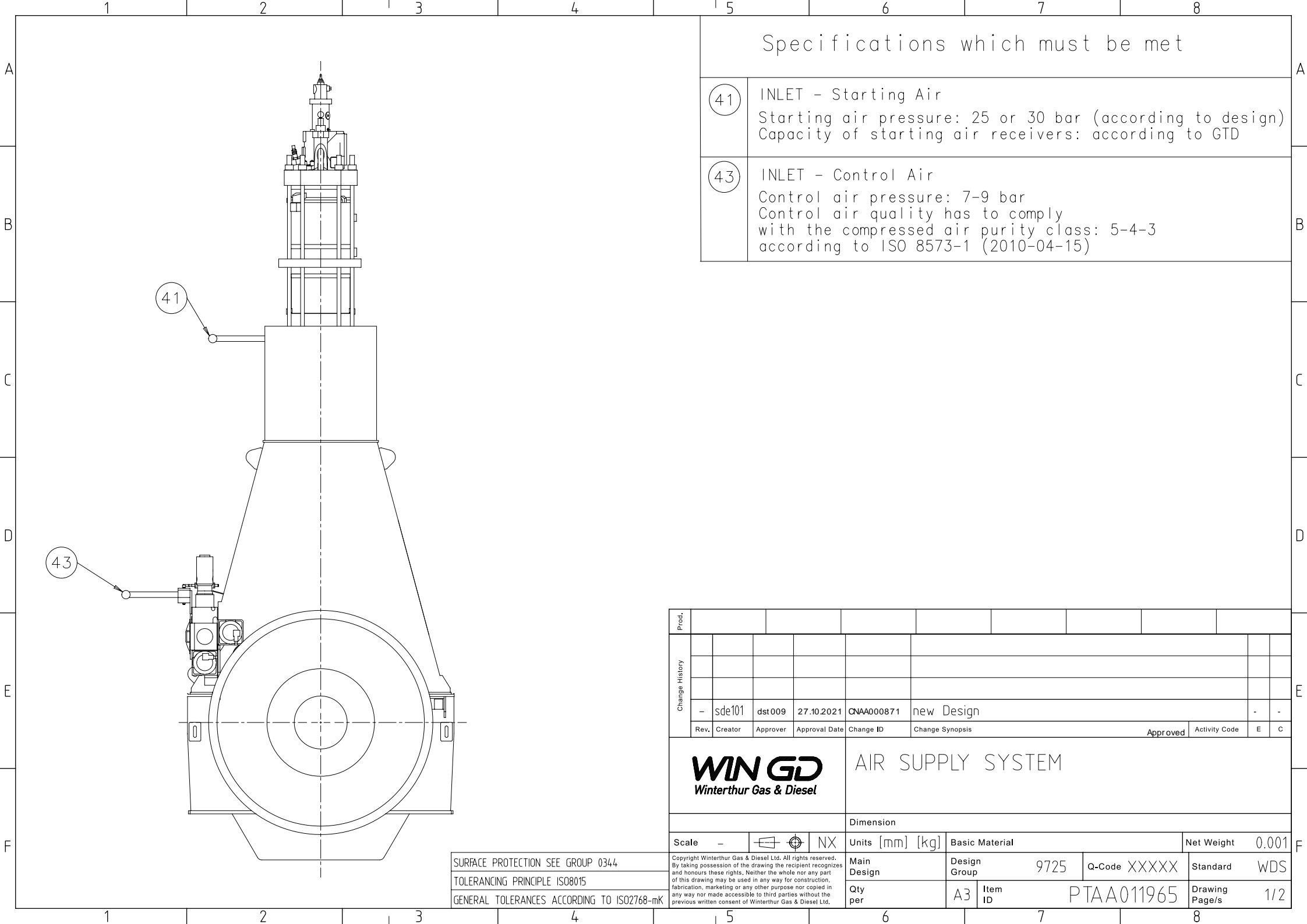



	1	2	3	4																																																																												
A	<div><div>SURFACE PROTECTION SEE GROUP 03/44</div><div>TOLERANCING PRINCIPLE ISO8015</div><div>GENERAL TOLERANCES ACCORDING TO ISO2768-mK</div></div> <div><div>Available executions</div><table><tr><th>Execution No.</th><th>Material ID</th><th>Cylinder No.</th></tr><tr><td>1</td><td>PAAD046047</td><td>5-8</td></tr></table></div>					Execution No.	Material ID	Cylinder No.	1	PAAD046047	5-8	A																																																																				
Execution No.	Material ID	Cylinder No.																																																																														
1	PAAD046047	5-8																																																																														
B						B																																																																										
C						C																																																																										
D	<div>NOTE</div> <p>The above executions can be configured using the Engine Configurator. Detailed guidance for the executions is provided within the Marine Installation Manual (MIM). If a specific execution of interest is not shown in the above table, then it may still be under development or not available. For further information or in case of a project-specific request, WinGD must be contacted directly.</p> <p>This publication is designed to provide accurate and authoritative information with regard to the subject-matter covered as it was available at the time of printing. However, the publication deals with complicated technical matters suited only for specialists in the area, and the design of the subject-products is subject to regular improvements, modifications and changes. Consequently, the publisher and copyright owner of this publication cannot accept any responsibility or liability for any eventual errors or omissions in this document or for discrepancies arising from the features of any actual item in the respective product being different from those shown in this publication. The publisher and copyright owner shall under no circumstances be held liable for any financial consequential damages or other loss, or any other damage or injury, suffered by any party making use of this publication or the information contained herein.</p>					D																																																																										
E	<table><tr><td>Prod.</td><td colspan="2">RT-flex50-D</td><td></td><td></td><td></td><td></td><td></td><td></td><td></td><td></td></tr><tr><td rowspan="5">Change History</td><td></td><td></td><td></td><td></td><td></td><td colspan="4"></td><td></td><td></td></tr><tr><td></td><td></td><td></td><td></td><td></td><td colspan="4"></td><td></td><td></td></tr><tr><td></td><td></td><td></td><td></td><td></td><td colspan="4"></td><td></td><td></td></tr><tr><td>-</td><td>sde101</td><td>dst009</td><td>27.10.2021</td><td>CNAA000871</td><td colspan="4">new Design</td><td>-</td><td>-</td></tr><tr><td>Rev.</td><td>Creator</td><td>Approver</td><td>Approval Date</td><td>Change ID</td><td colspan="4">Change Synopsis</td><td>Approved</td><td>Activity Code</td><td>E</td><td>C</td></tr></table>										Prod.	RT-flex50-D										Change History																																		-	sde101	dst009	27.10.2021	CNAA000871	new Design				-	-	Rev.	Creator	Approver	Approval Date	Change ID	Change Synopsis				Approved	Activity Code	E	C	E
Prod.	RT-flex50-D																																																																															
Change History																																																																																
	-	sde101	dst009	27.10.2021	CNAA000871	new Design				-	-																																																																					
	Rev.	Creator	Approver	Approval Date	Change ID	Change Synopsis				Approved	Activity Code	E	C																																																																			
F	<div><div><div><div>WIN GD</div><div>Winterthur Gas & Diesel</div></div><div><div>separate BOM available</div><div>Dimension</div></div></div><div><div>Scale</div><div>-</div><div></div><div>NX</div></div><div><div>Units [mm] [kg]</div><div>Basic Material</div><div>Net Weight</div><div>0.001</div></div><div><div>Copyright Winterthur Gas & Diesel Ltd. All rights reserved. By taking possession of the drawing the recipient recognizes and honours these rights. Neither the whole nor any part of this drawing may be used in any way for construction, fabrication, marketing or any other purpose nor copied in any way nor made accessible to third parties without the previous written consent of Winterthur Gas & Diesel Ltd.</div><div><div>Main Design</div><div>Design Group</div><div>9725</div><div>Q-Code</div><div>XXXXXX</div><div>Standard</div><div>WDS</div></div><div><div>Qty per</div><div>A4</div><div>Item ID</div><div>PTAA015192</div><div>Drawing Page/s</div><div>1/1</div></div></div></div>										F																																																																					
	1	2	3	4																																																																												

SEQ NO	QTY	Item ID	Item Name			Dimension	Standard-ID	Basic Material		Net Weight					
1	1	PTAA011965	AIR SUPPLY SYSTEM							0.001					
Prod.	5,6,7,8 RT-flex50-D														
Change History	C	sde101	dst 009	27.10.2021	CNAA000871	Main Design/Drawing Introduced				4	3				
	B	sde101	mhu019	26.03.2018	EAAD088933	Legacy information. See corresponding ChangeNotice				4	3				
	A	jvix12	bha009	06.11.2013	EAAD084882	Legacy information. See corresponding ChangeNotice				4	-				
	-	jvix12	dst009	13.12.2011	EAAD082762	Legacy information. See corresponding ChangeNotice				4	-				
	Rev.	Creator	Approver	Approval Date	Change ID	Change Synopsis	Approved	Activity Code	E	C					
<div>WIN GD</div> <div>Winterthur Gas & Diesel</div>					AIR SUPPLY SYSTEM										
Bill Of Material					Dimension										
Copyright Winterthur Gas & Diesel Ltd. All rights reserved. By taking possession of the document the recipient recognizes and honours these rights. Neither the whole nor any part of this document may be used in any way for construction, fabrication, marketing or any other purpose nor copied in any way nor made accessible to third parties without the previous written consent of Winterthur Gas & Diesel Ltd.					Units		[m] [kg]		Basic Material		Net Weight	0.001			
					Main Design		Yes		Design Group		9725	Q-Code	XXXXX	Standard	WDS
					Qty per		Engine		A4	Item ID		PAAD046047		BOM Page/s	01/01



Specifications which must be met	
41	INLET - Starting Air Starting air pressure: 25 or 30 bar (according to design) Capacity of starting air receivers: according to GTD
43	INLET - Control Air Control air pressure: 7-9 bar Control air quality has to comply with the compressed air purity class: 5-4-3 according to ISO 8573-1 (2010-04-15)

Prod.												
Change History												
	-	sde101	dst009	27.10.2021	CNA0000871	new Design				-	-	
	Rev.	Creator	Approver	Approval Date	Change ID	Change Synopsis			Approved	Activity Code	E	C
<div>WIN GD</div> <div>Winterthur Gas & Diesel</div>					AIR SUPPLY SYSTEM							
					Dimension							
Scale		-		NX	Units [mm] [kg]		Basic Material			Net Weight		0.001
Copyright Winterthur Gas & Diesel Ltd. All rights reserved. By taking possession of the drawing the recipient recognizes and honours these rights. Neither the whole nor any part of this drawing may be used in any way for construction, fabrication, marketing or any other purpose nor copied in any way nor made accessible to third parties without the previous written consent of Winterthur Gas & Diesel Ltd.					Main Design		Design Group		9725	Q-Code XXXXX	Standard	WDS
					Qty per		A3	Item ID		PTAA011965		Drawing Page/s

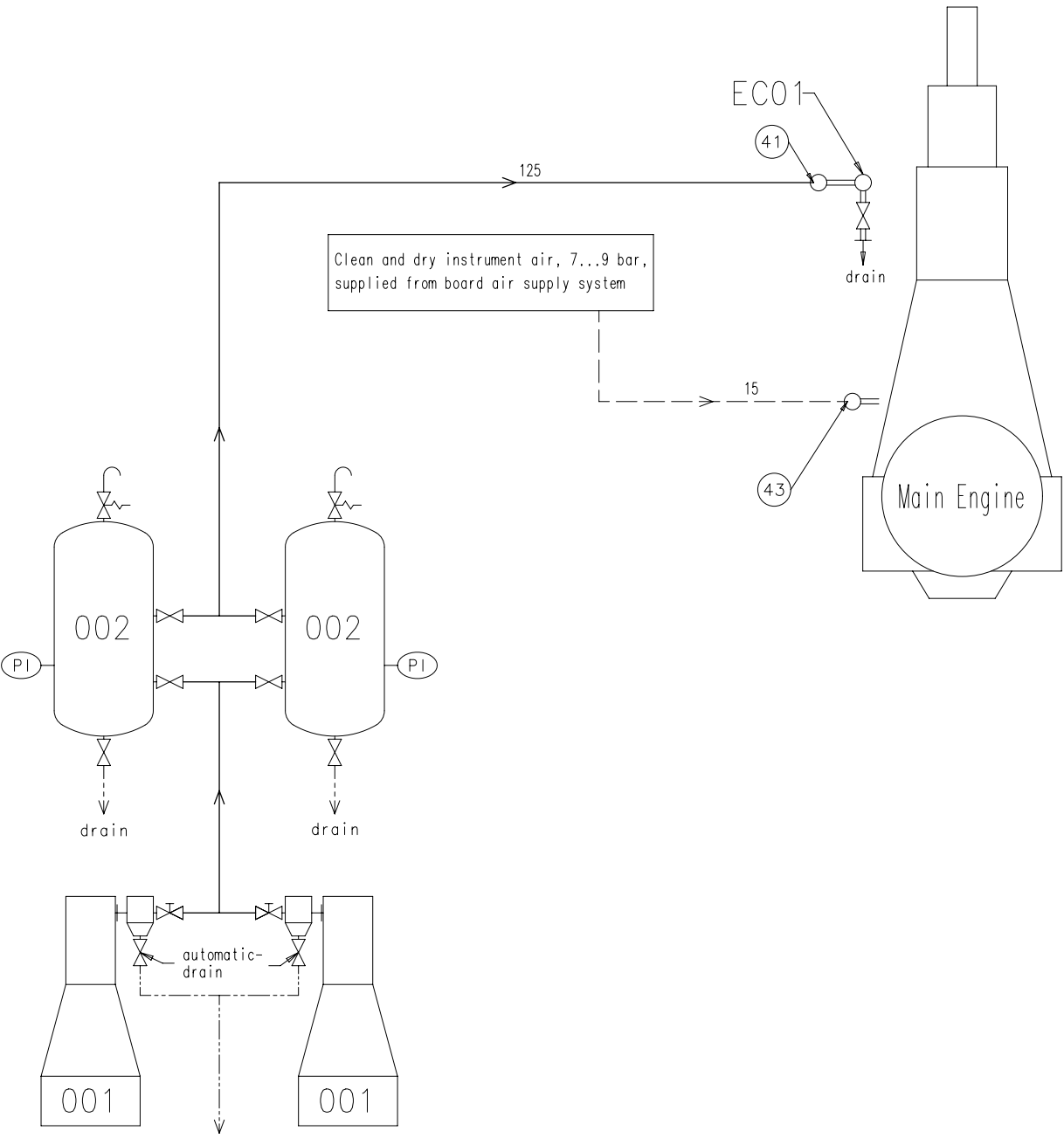
SURFACE PROTECTION SEE GROUP 0344

TOLERANCING PRINCIPLE ISO8015

GENERAL TOLERANCES ACCORDING TO ISO2768-mK

Copyright Winterthur Gas & Diesel Ltd. All rights reserved.
By taking possession of the drawing the recipient recognizes and honours these rights. Neither the whole nor any part of this drawing may be used in any way for construction, fabrication, marketing or any other purpose nor copied in any way nor made accessible to third parties without the previous written consent of Winterthur Gas & Diesel Ltd.

SYSTEM PROPOSAL



Pos.	System Components *1)
001	Starting air compressor 25/30 bar (for capacity see GTD)
002	Starting air receiver 25/30 bar (for capacity see GTD)
Pos.	Engine Connections *2)
④1	INLET - Starting Air
④3	INLET - Control Air (control system and air spring)
Pos.	Engine Components *3)
EC01	Distribution pipe with automatic starting air shut-off valve
<u>Remarks:</u>	
- Drain plugs and drain cocks where necessary	
- Pipe diameters for starting air compressors and auxiliary equipment according to suppliers recommendations.	
The working air inlet to the leakage collect./ washing system is shown on the relevant drawing of design group 9724.	
*1) Refer to the "Pipe Connection Plan" for the execution and location of the engine pipe connections.	
*2) To be delivered by external supplier and to be installed by the shipyard.	
*3) To be delivered by the engine builder, i.e. already equipped on engine side.	
———— Starting air feed pipes	
- - - - Control air pipes	
———— Ancillary equipment pipes	
----- Drain pipes	
===== Pipes on engine	
○ Pipe connections	

MIDS - WinGD RT-flex50-D – Air Supply System (DG9725)

TRACK CHANGES

DATE	SUBJECT	DESCRIPTION
2017-02-24	DRAWING SET	First web upload
2018-03-26	107.340.766	System drg. – new drawing revision
2021-11-03	PAAD046047 PTAA011965	Main drg. and system drg. – new drawing revision

DISCLAIMER

© Copyright by Winterthur Gas & Diesel Ltd.

All rights reserved. No part of this document may be reproduced or copied in any form or by any means (electronic, mechanical, graphic, photocopying, recording, taping or other information retrieval systems) without the prior written permission of the copyright owner.

THIS PUBLICATION IS DESIGNED TO PROVIDE AN ACCURATE AND AUTHORITATIVE INFORMATION WITH REGARD TO THE SUBJECT-MATTER COVERED AS WAS AVAILABLE AT THE TIME OF PRINTING. HOWEVER, THE PUBLICATION DEALS WITH COMPLICATED TECHNICAL MATTERS SUITED ONLY FOR SPECIALISTS IN THE AREA, AND THE DESIGN OF THE SUBJECT-PRODUCTS IS SUBJECT TO REGULAR IMPROVEMENTS, MODIFICATIONS AND CHANGES. CONSEQUENTLY, THE PUBLISHER AND COPYRIGHT OWNER OF THIS PUBLICATION CAN NOT ACCEPT ANY RESPONSIBILITY OR LIABILITY FOR ANY EVENTUAL ERRORS OR OMISSIONS IN THIS BOOKLET OR FOR DISCREPANCIES ARISING FROM THE FEATURES OF ANY ACTUAL ITEM IN THE RESPECTIVE PRODUCT BEING DIFFERENT FROM THOSE SHOWN IN THIS PUBLICATION. THE PUBLISHER AND COPYRIGHT OWNER SHALL UNDER NO CIRCUMSTANCES BE HELD LIABLE FOR ANY FINANCIAL CONSEQUENTIAL DAMAGES OR OTHER LOSS, OR ANY OTHER DAMAGE OR INJURY, SUFFERED BY ANY PARTY MAKING USE OF THIS PUBLICATION OR THE INFORMATION CONTAINED HEREIN.