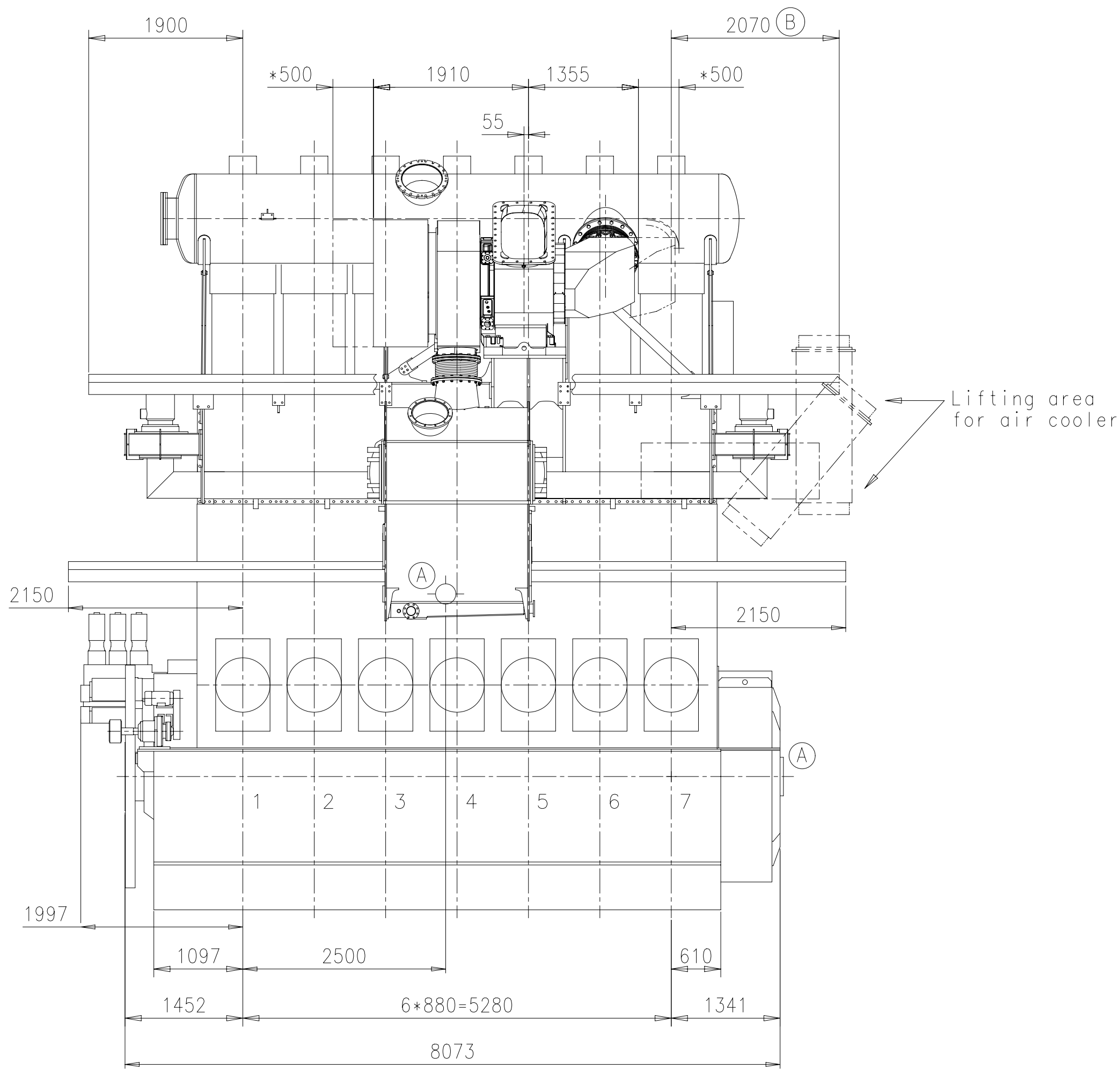
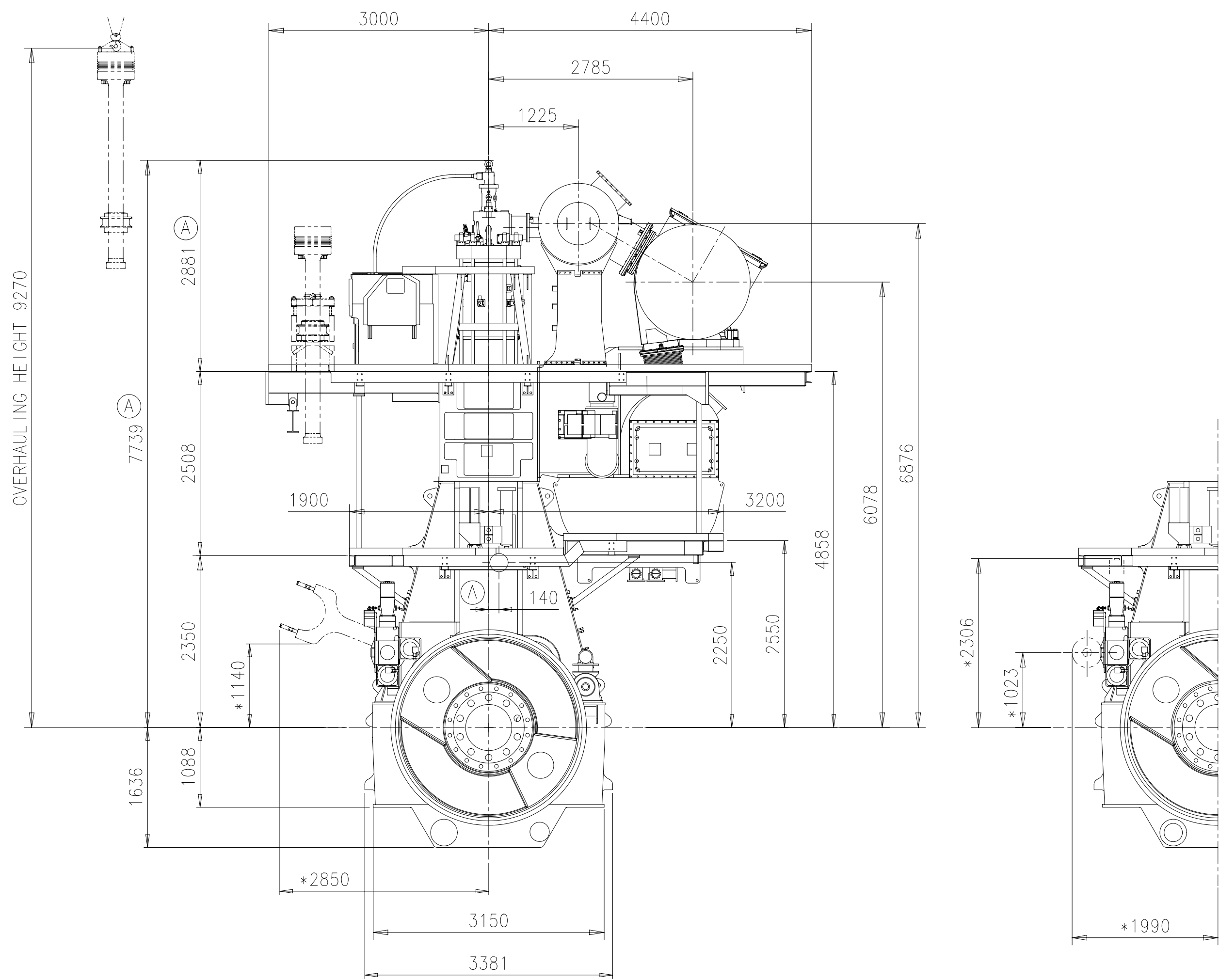


Download  
"DXF file"

Abgasseite  
EXHAUST SIDE



Antriebsseite  
DRIVING END



TOOLS FOR  
PISTON AND CYL. COVER  
DISMANTLING

SPARES

RECOMMENDED  
MINIMUM  
AREA TO BE COVERED BY  
THE ENGINE ROOM CRANE

ENGINE ROOM  
HATCH

Lifting area  
for air cooler

TURBOCHARGER 1xA175-L

\* Platz fuer Demontage  
SPACE FOR REMOVAL  
Gewicht ohne Wasser und Oel= 225 t  
WEIGHT WITHOUT WATER AND OIL

\* ca. Schwerpunkt  
APPROX. CENTRE OF GRAVITY

PLEASE NOTE:  
MAIN STAIRS WITH MORE THAN 4 STEPS ONLY  
IN LONGITUDINAL DIRECTION OF THE ENGINE.

WINGD  
Winterthur Gas & Diesel

Product  
7RT-flex50-D

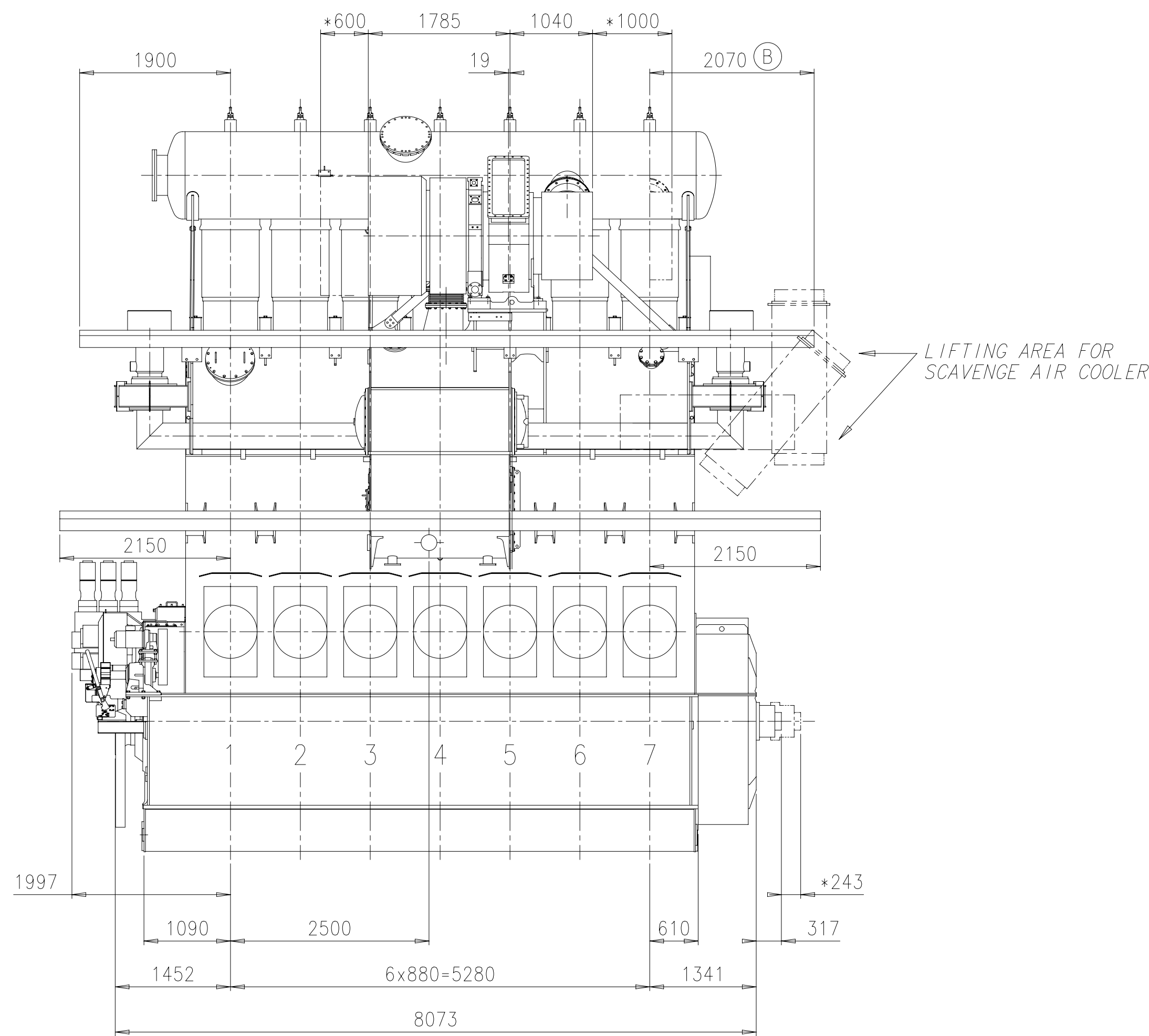
ENGINE OUTLINE VIEW

Motoransichten

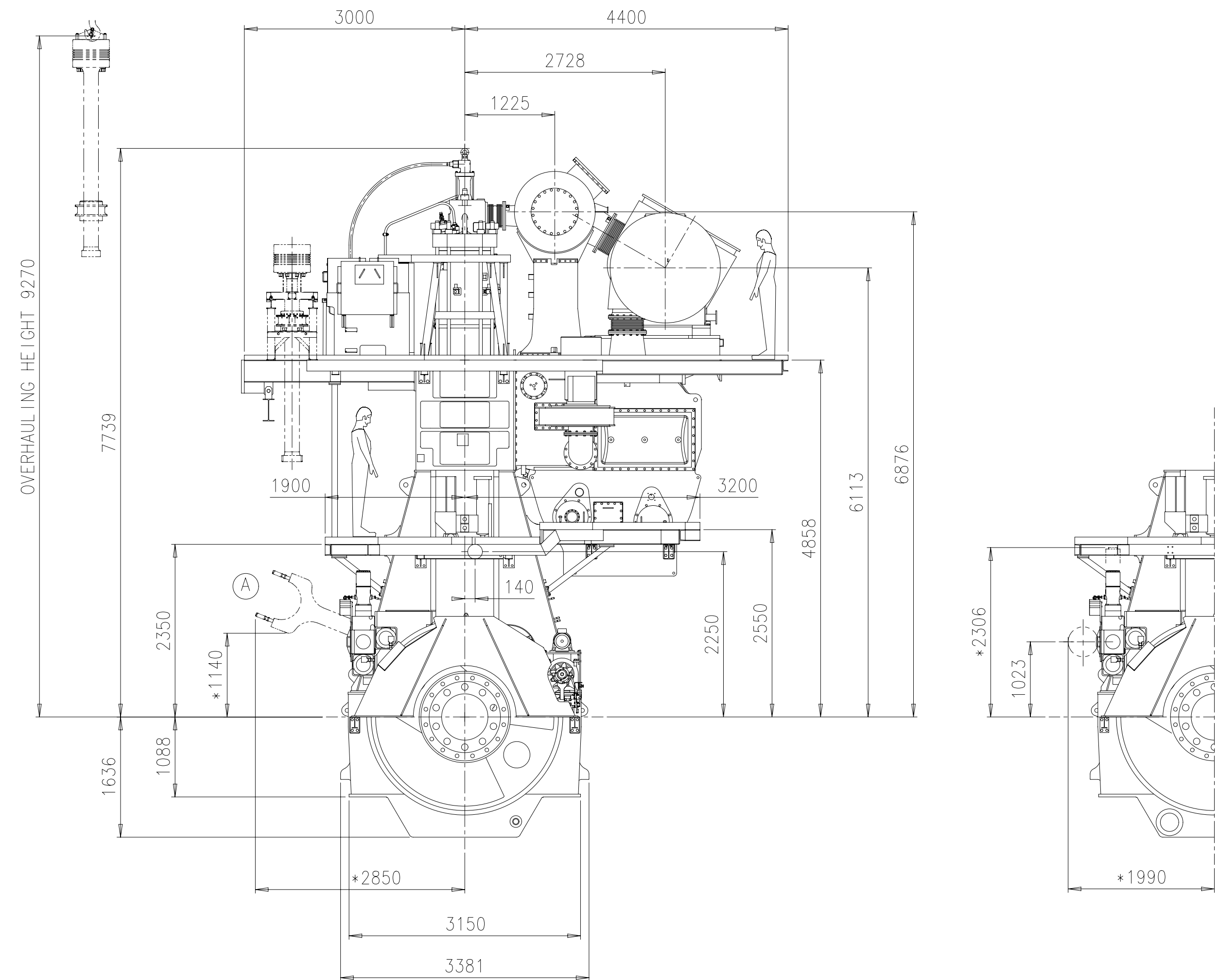
SURFACE PROTECTION SEE GROUP 0344		Scale 1:50		Size A1		Page 1/1		Material PAAD191686	
TOLERANCING PRINCIPLE ISO8015		Design Group		Drawing ID 0812		107.395.231		Rev. B	
GENERAL TOLERANCES ACCORDING TO ISO2768-mK		Appd 11.01.2008 REG002 Egg							

Download  
"DXF file"

Abgasseite  
EXHAUST SIDE

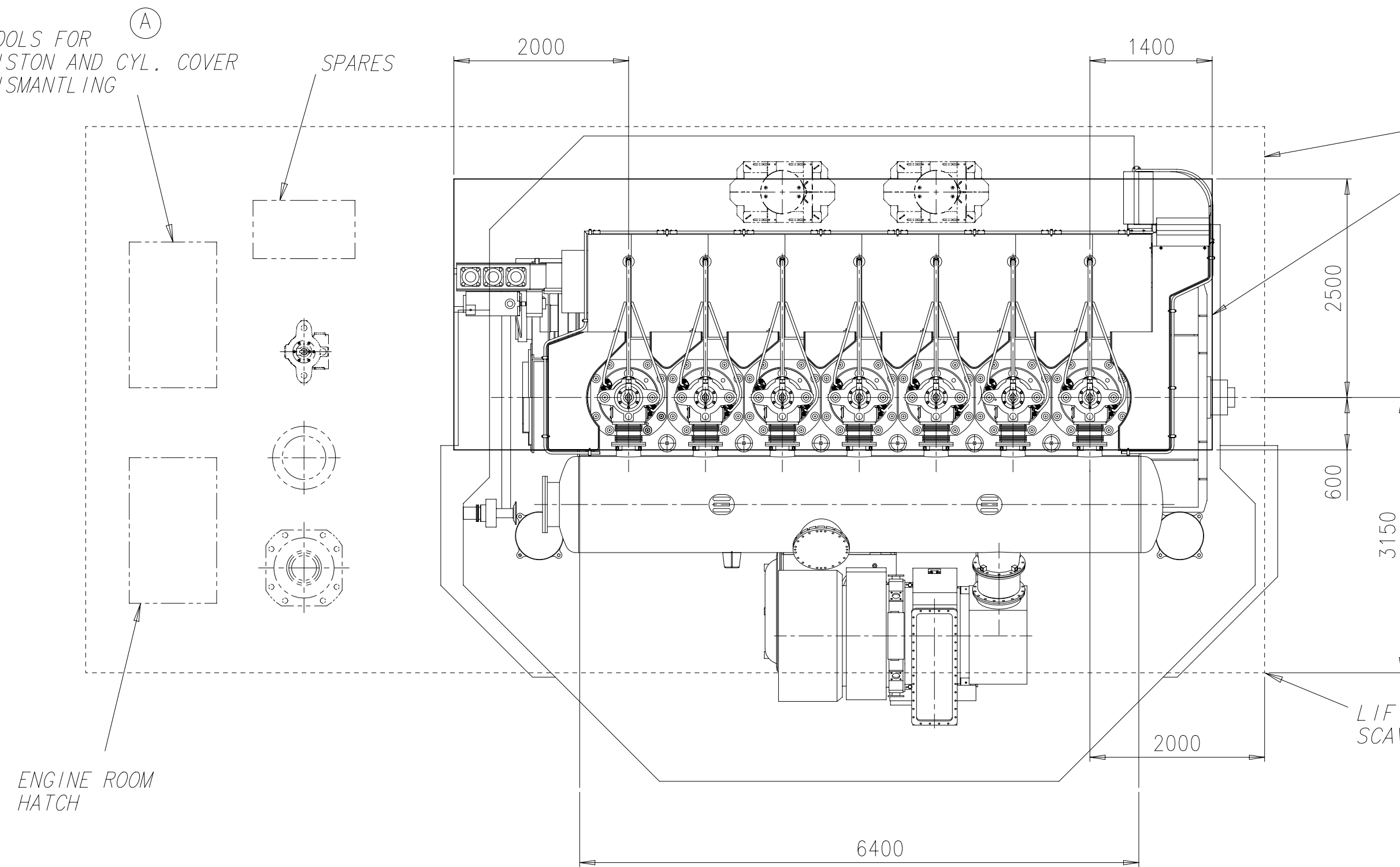


Antriebsseite  
DRIVING END



TOOLS FOR  
PISTON AND CYL. COVER  
DISMANTLING

SPARES



RECOMMENDED  
MINIMUM

AREA TO BE COVERED BY  
THE ENGINE ROOM CRANE

For safety and timesaving reasons it will  
be an advantage to increase the minimum area  
for moving the heavy components between the  
storing places and the engine or to the engine  
room hatch by using the engine room crane.

LIFTING AREA FOR  
SCAVENGE AIR COOLER

TURBOCHARGER 1xMET60MB

ca. Schwerpunkt  
APPROX. CENTRE OF GRAVITY

\* Platz fuer Demontage  
SPACE FOR REMOVAL

Gewicht ohne Wasser und Oel= 255 t  
WEIGHT WITHOUT WATER AND OIL

PLEASE NOTE:

MAIN STAIRS WITH MORE THAN 4 STEPS ONLY  
IN LONGITUDINAL DIRECTION OF THE ENGINE.

WINGD  
Winterthur Gas & Diesel

Product  
7RT-flex50-D

ENGINE OUTLINE VIEW

Motoransichten

Units	mm kg	NX	Basic Material	Net Weight	0,001
Made	18.05.2012	hri004	Riser	Scale	1:50
Chkd	05.06.2012	mgr026	Graf	Design Group	
Appd	06.06.2012	oha005	Habicht	Drawing ID	DAAD028221
Size	A1	Page	1/1	Material ID	PAAD089171
Rev.	B				

SURFACE PROTECTION SEE GROUP 0344  
TOLERANCING PRINCIPLE ISO8015  
GENERAL TOLERANCES ACCORDING TO ISO2768-mK

## WinGD-7RT-flex50-D \_ Engine Outline Views

### TRACK CHANGES

DATE	SUBJECT	DESCRIPTION
2018-02-26	DRAWING SET	First web upload
2021-06-07	PAAD089171 PAAD191686	Revised Engine Outline View for Turbocharger Type 1XMET60MB has been updated. Revised Engine Outline View for Turbocharger Type 1XA175-L has been updated.

### DISCLAIMER

© Copyright by Winterthur Gas & Diesel Ltd.

All rights reserved. No part of this document may be reproduced or copied in any form or by any means (electronic, mechanical, graphic, photocopying, recording, taping or other information retrieval systems) without the prior written permission of the copyright owner.

THIS PUBLICATION IS DESIGNED TO PROVIDE AN ACCURATE AND AUTHORITATIVE INFORMATION WITH REGARD TO THE SUBJECT-MATTER COVERED AS WAS AVAILABLE AT THE TIME OF PRINTING. HOWEVER, THE PUBLICATION DEALS WITH COMPLICATED TECHNICAL MATTERS SUITED ONLY FOR SPECIALISTS IN THE AREA, AND THE DESIGN OF THE SUBJECT-PRODUCTS IS SUBJECT TO REGULAR IMPROVEMENTS, MODIFICATIONS AND CHANGES. CONSEQUENTLY, THE PUBLISHER AND COPYRIGHT OWNER OF THIS PUBLICATION CAN NOT ACCEPT ANY RESPONSIBILITY OR LIABILITY FOR ANY EVENTUAL ERRORS OR OMISSIONS IN THIS BOOKLET OR FOR DISCREPANCIES ARISING FROM THE FEATURES OF ANY ACTUAL ITEM IN THE RESPECTIVE PRODUCT BEING DIFFERENT FROM THOSE SHOWN IN THIS PUBLICATION. THE PUBLISHER AND COPYRIGHT OWNER SHALL UNDER NO CIRCUMSTANCES BE HELD LIABLE FOR ANY FINANCIAL CONSEQUENTIAL DAMAGES OR OTHER LOSS, OR ANY OTHER DAMAGE OR INJURY, SUFFERED BY ANY PARTY MAKING USE OF THIS PUBLICATION OR THE INFORMATION CONTAINED HEREIN.