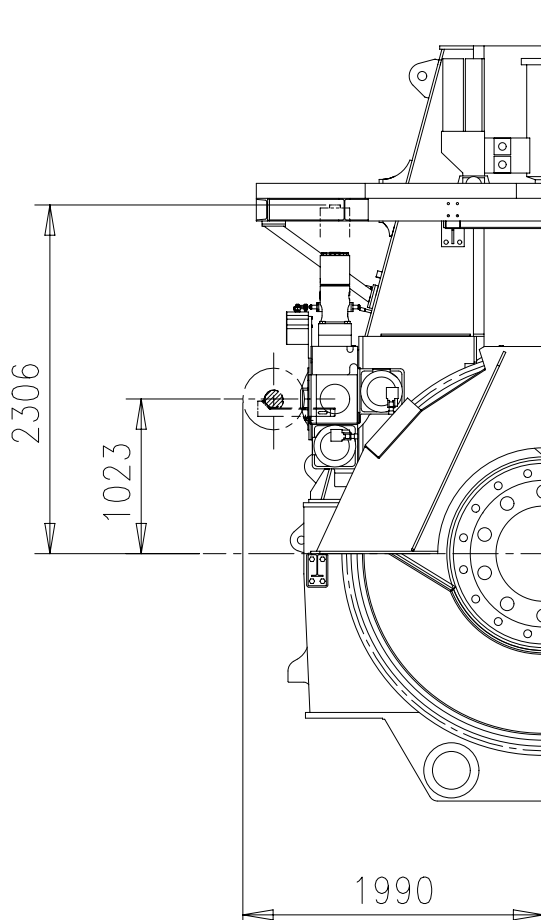
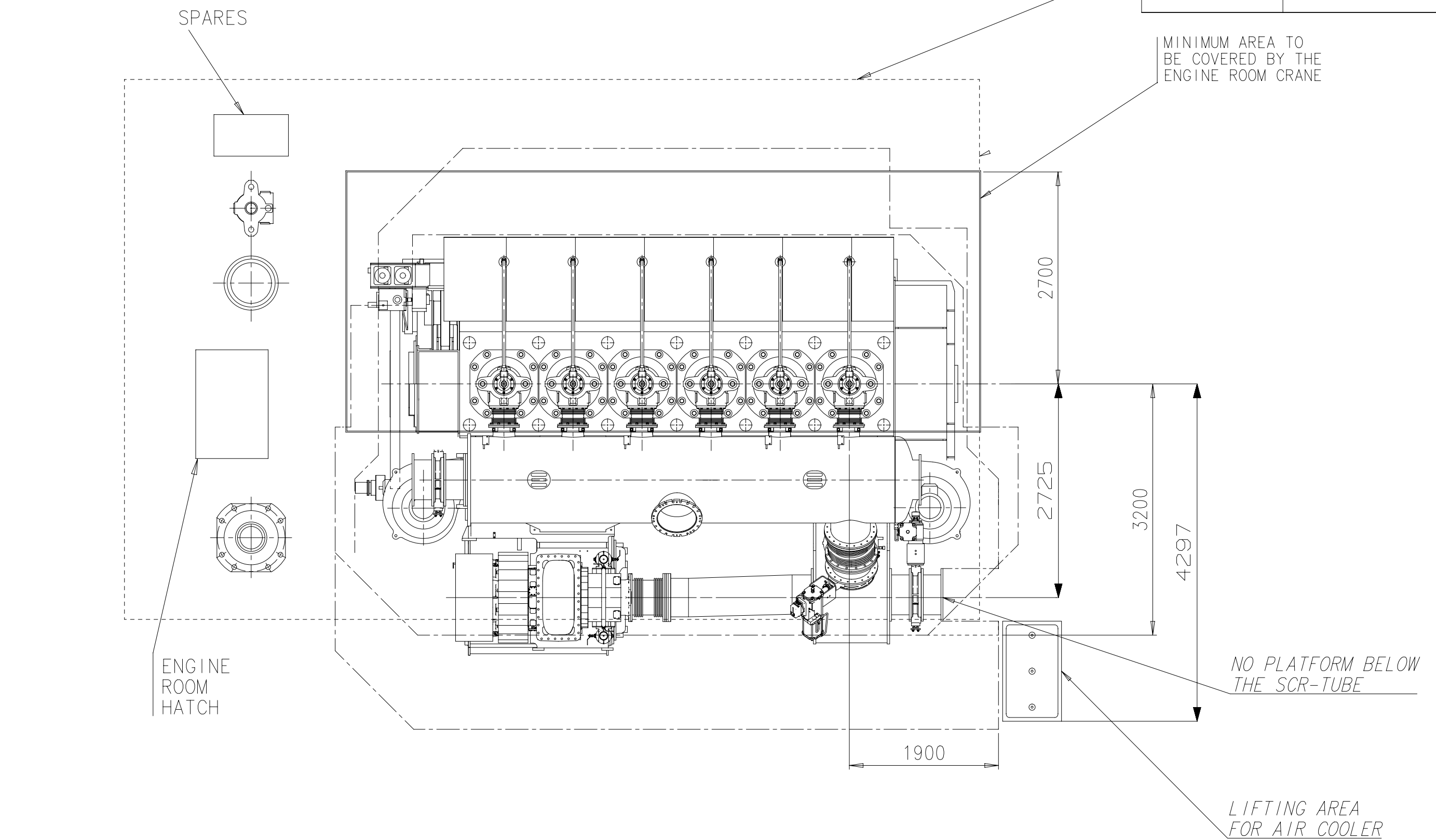
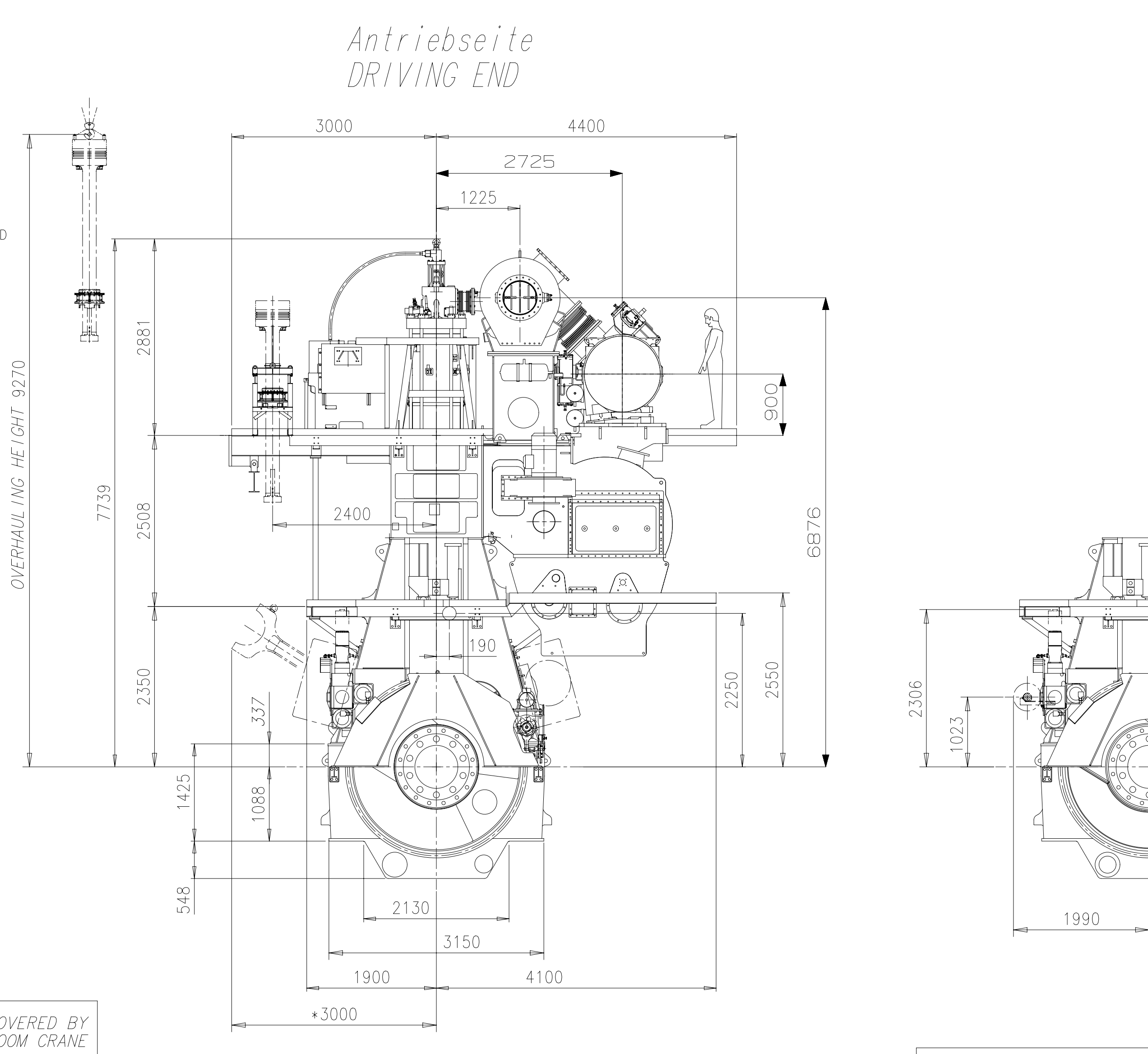
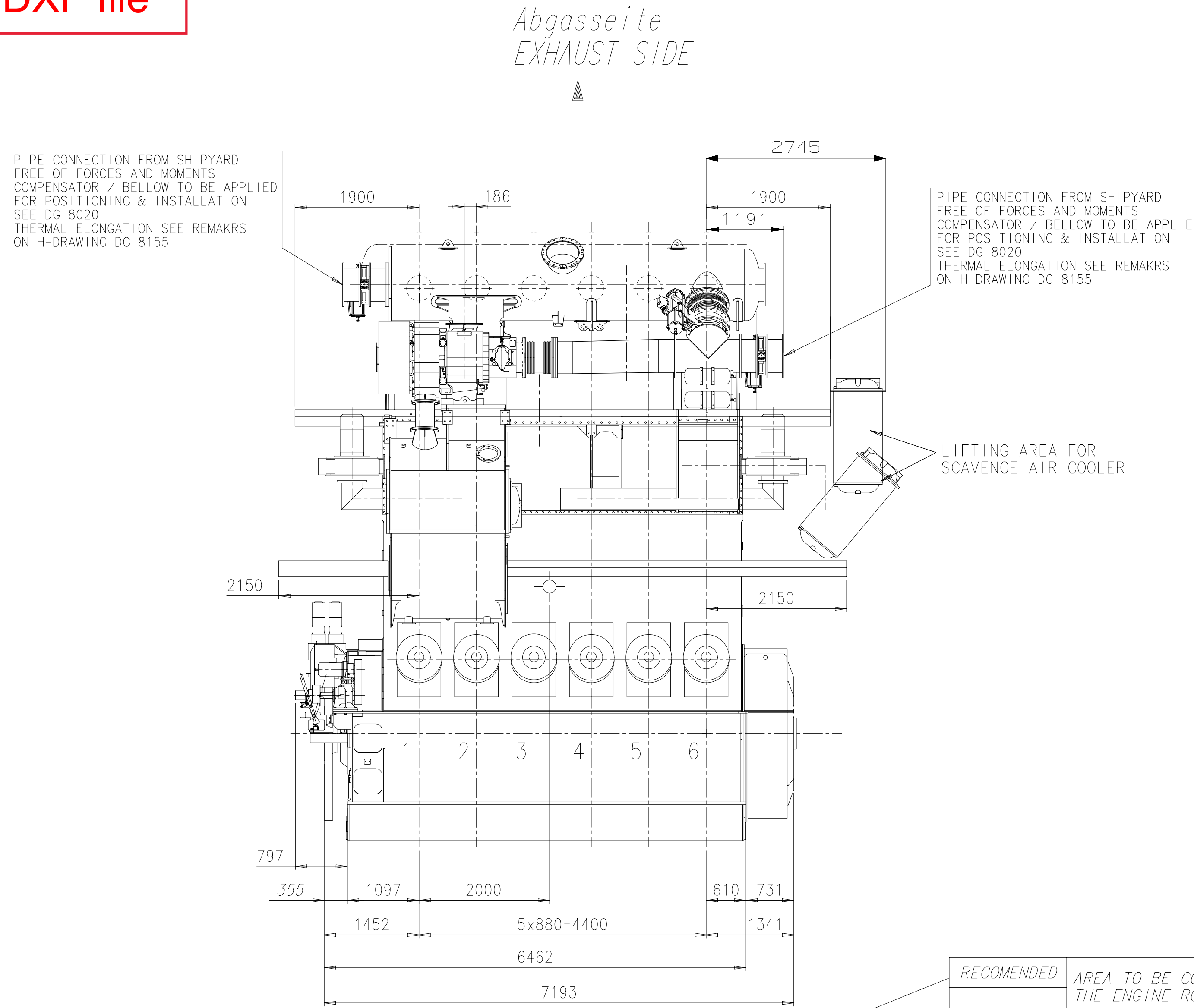


Download
"DXF file"



Turbolader: 1xA165-L
TURBOCHARGER

Gewicht ohne Wasser und Öl = 230 t
WEIGHT WITHOUT WATER AND OIL

ca. Schwerpunkt
APPROX. CENTRE OF GRAVITY

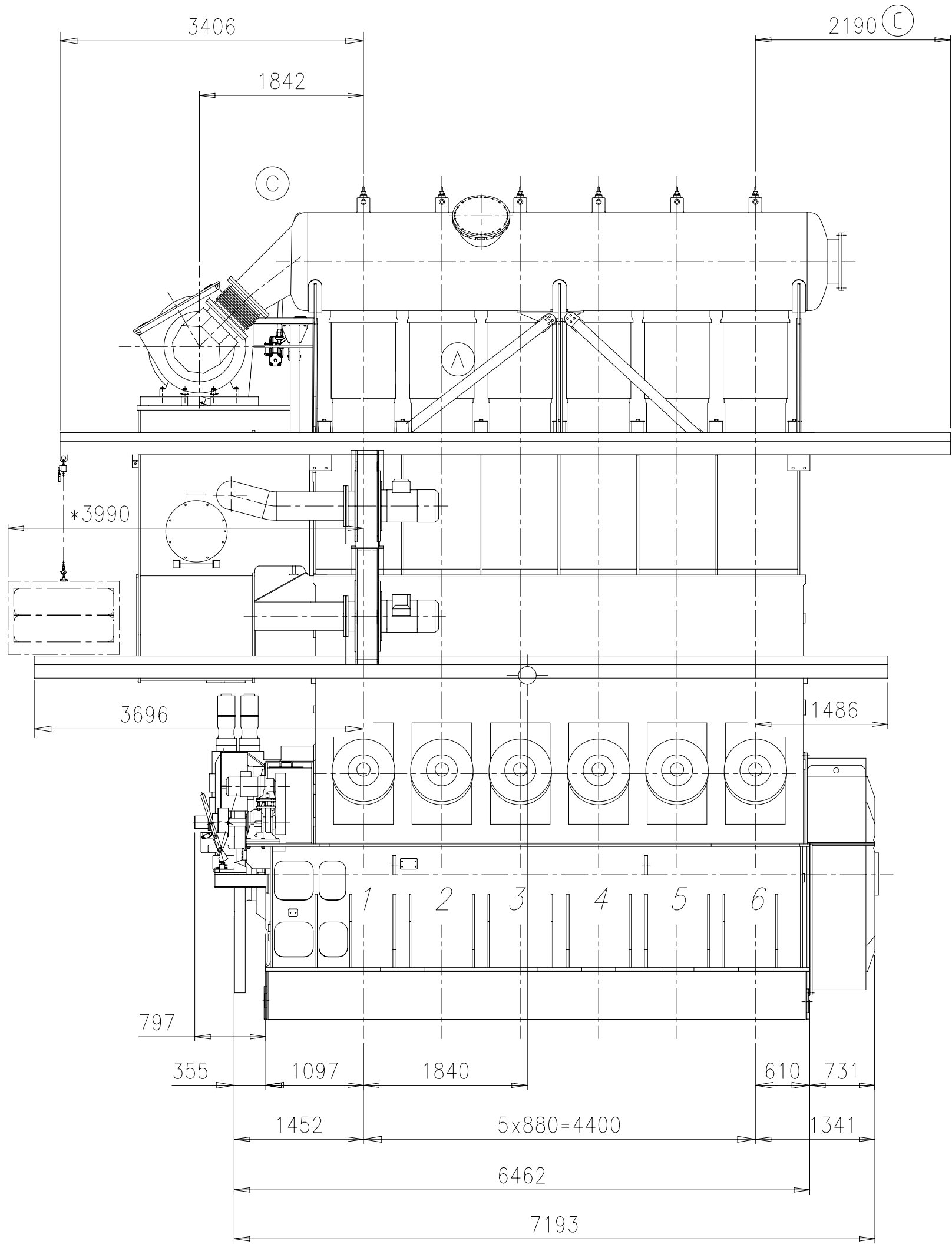
* = Platz fuer Demontage
SPACE FOR REMOVAL

PLEASE NOTE:
MAIN STAIRS WITH MORE THAN 4 STEPS ONLY
IN LONGITUDINAL DIRECTION OF THE ENGINE.

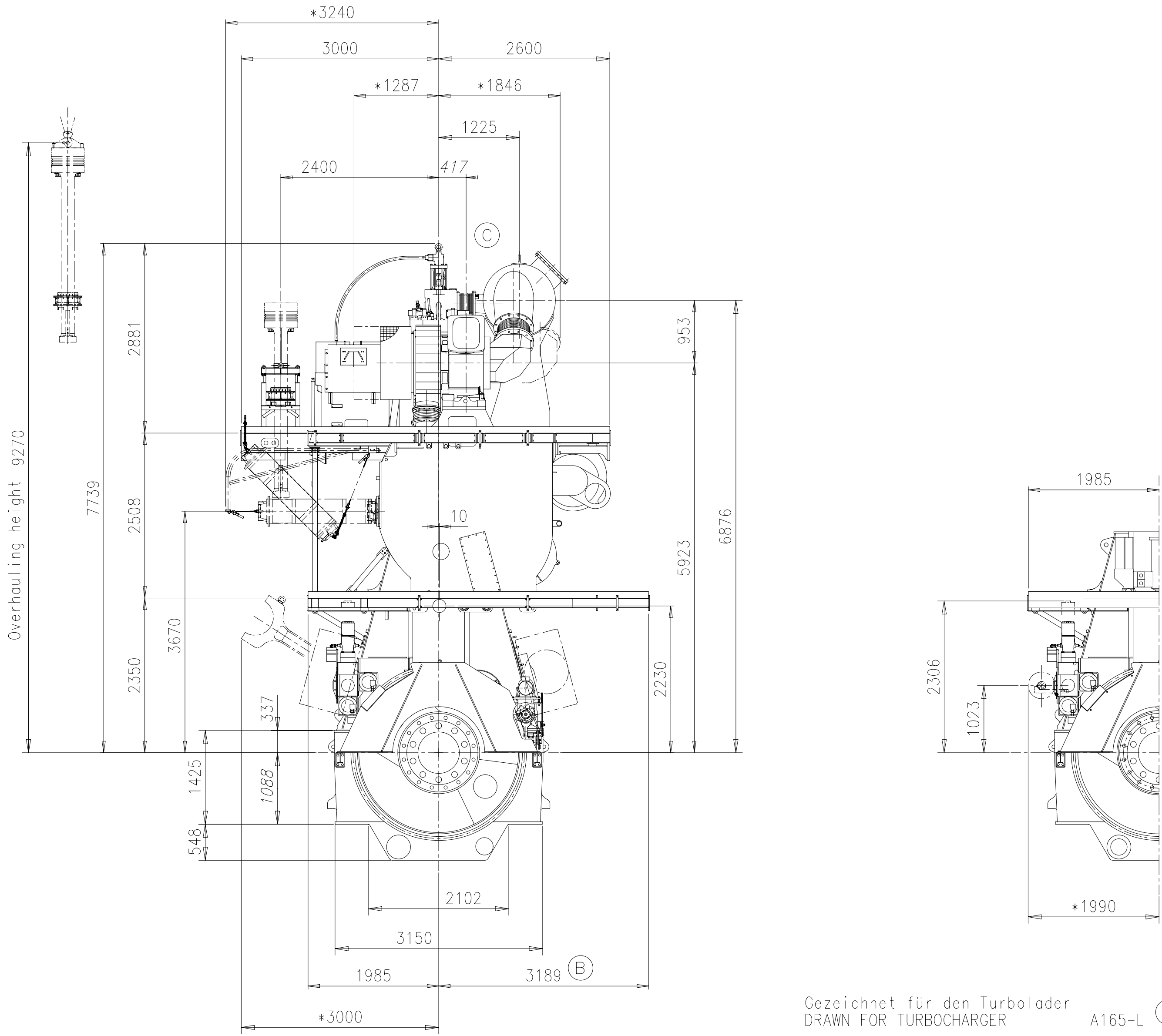
Free space for file	D-Code XXXXX Standard ISO; JIS				Main Drw. H
Modif.	EAAD090327	17.01.2019			
Number	17.01.2019	mgr026 Graf	Number	17.01.2019	mda006 Dacic
Product	6RT-flex50-E		ENGINE OUTLINE VIEW HP-SCR Motoransichten HP-SCR		Net Weight 0,001
Units	mm kg	NX	Basic Material	Scale 1:40	Size A1 Page 1/1 Material PAAD316789
Surface Protection	SEE GROUP 0344		Tolerancing Principle	ISO 8015	
General Tolerances	ACCORDING TO ISO 2768-mK		Design Group	0812	
Drawing ID	DAAD111412		Rev.	-	

Download
"DXF file"

EXHAUST SIDE



DRIVING END



Gezeichnet für den Turbolader
DRAWN FOR TURBOCHARGER A165-L (A)

PLEASE NOTE:
MAIN STAIRS WITH MORE THAN 4 STEPS ONLY
IN LONGITUDINAL DIRECTION OF THE ENGINE.

Gewicht ohne Wasser oder Öl = 225 t
WEIGHT WITHOUT WATER NOR OIL

ca. Schwerpunkt
APPROX. CENTRE OF GRAVITY

Turbolader: 1xA165-L
TURBOCHARGER: 1xA265-L (A)

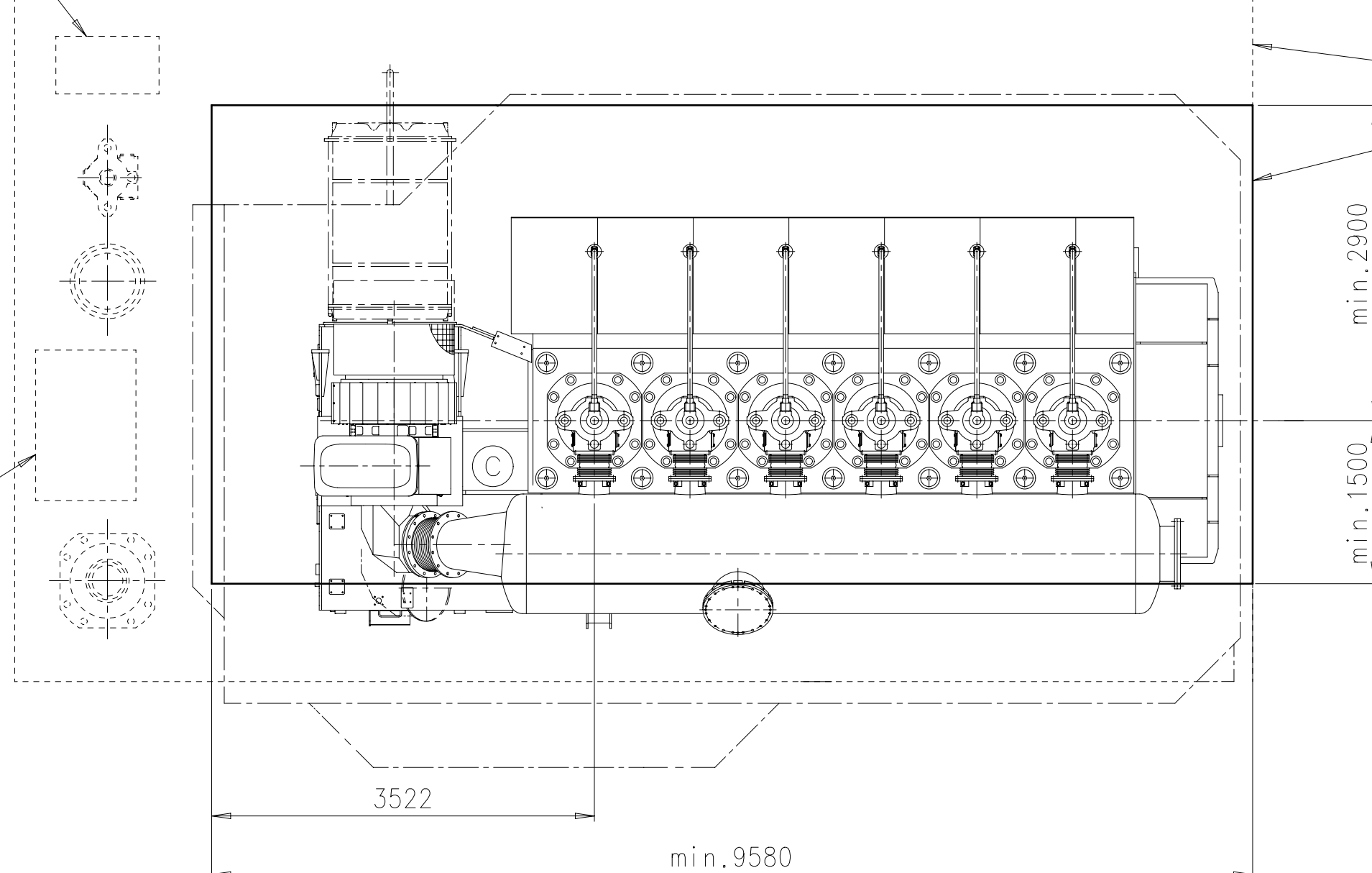
(C)

* = Platz fuer Demontage
SPACE FOR REMOVAL

SPARES

ENGINE
ROOM
HATCH

RECOMMENDED
MINIMUM
AREA TO BE COVERED BY
THE ENGINE ROOM CRANE



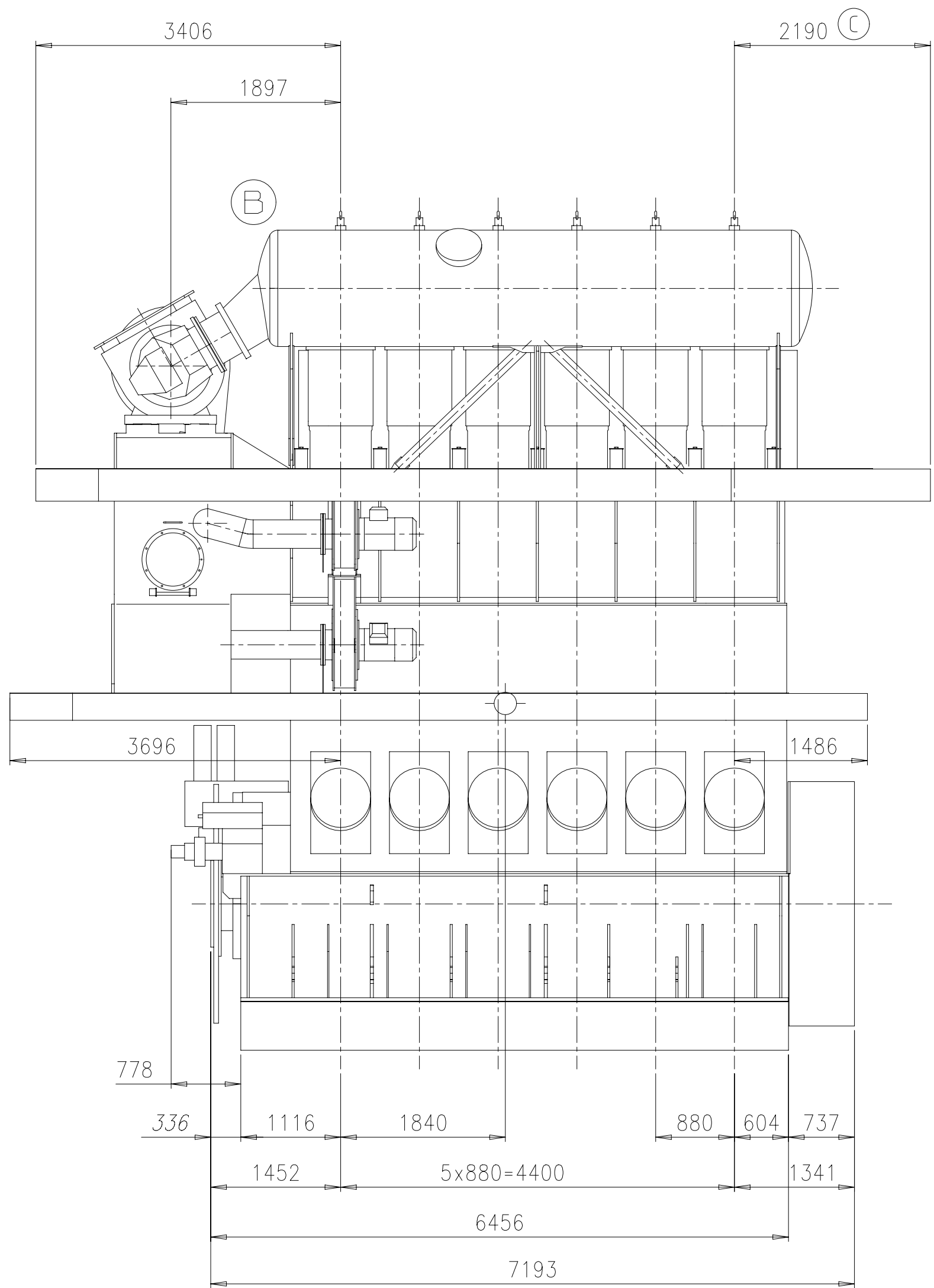
DIMENSIONS ONLY FOR REFERENCE THIS OUTLINE DRAWING CAN NOT BE USED FOR FINAL DESIGN. PLEASE TAKE CORRESPONDING DESIGN GROUP				SURFACE PROTECTION SEE GROUP 0344 TOLERANCING PRINCIPLE ISO8015 GENERAL TOLERANCES ACCORDING TO ISO2768-mK				Units: mm kg NX Made: 15.11.2013 hdo002 H.Doerre Chkd: 18.11.2013 ihe003 Herceg Appd: 19.11.2013 bha009 Haag				Basic Material Scale: 1:50 Design Group: 0812				Size: A1 Page: 1/1 Material: PAAD147188 Drawing ID: DAAD045851 Rev: C			
-----------------------------------------------------------------------------------------------------------------------------------	--	--	--	------------------------------------------------------------------------------------------------------------------	--	--	--	-----------------------------------------------------------------------------------------------------------------------	--	--	--	-----------------------------------------------------	--	--	--	--------------------------------------------------------------------------	--	--	--

Approved

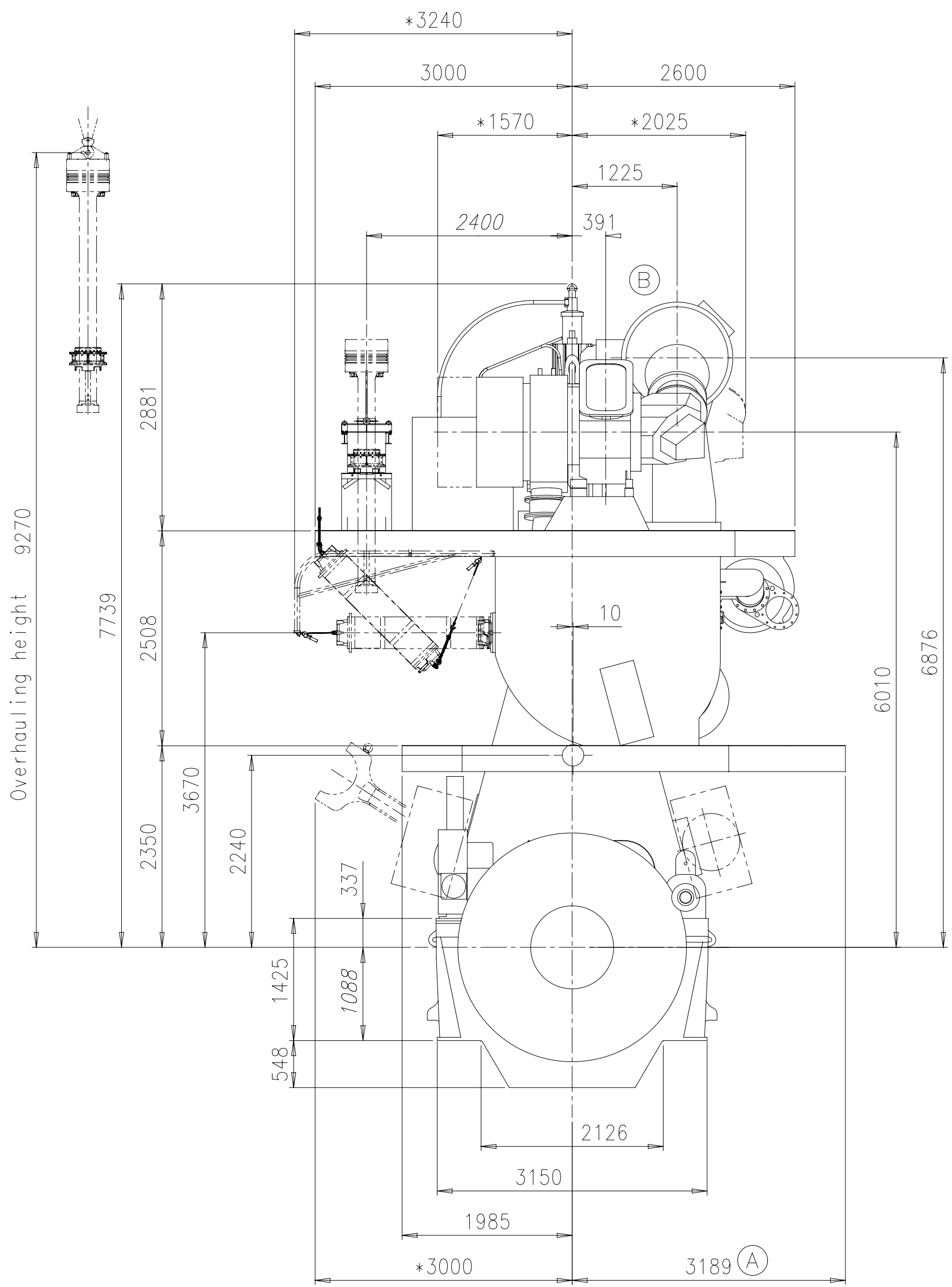
1D - DIMENSIONAL DRAWING - Confidential

Download
"DXF file"

EXHAUST SIDE

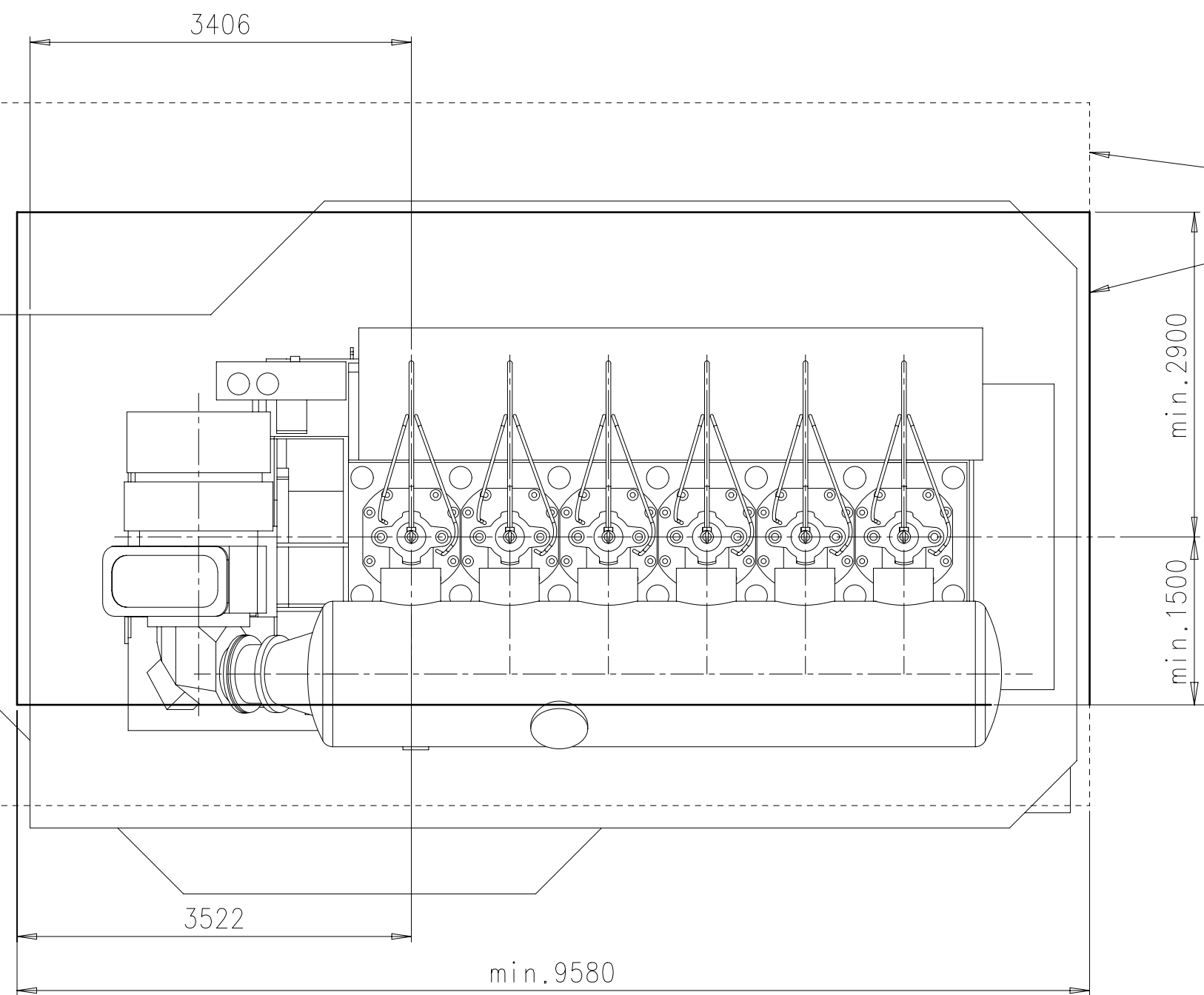


DRIVING END



SPARES

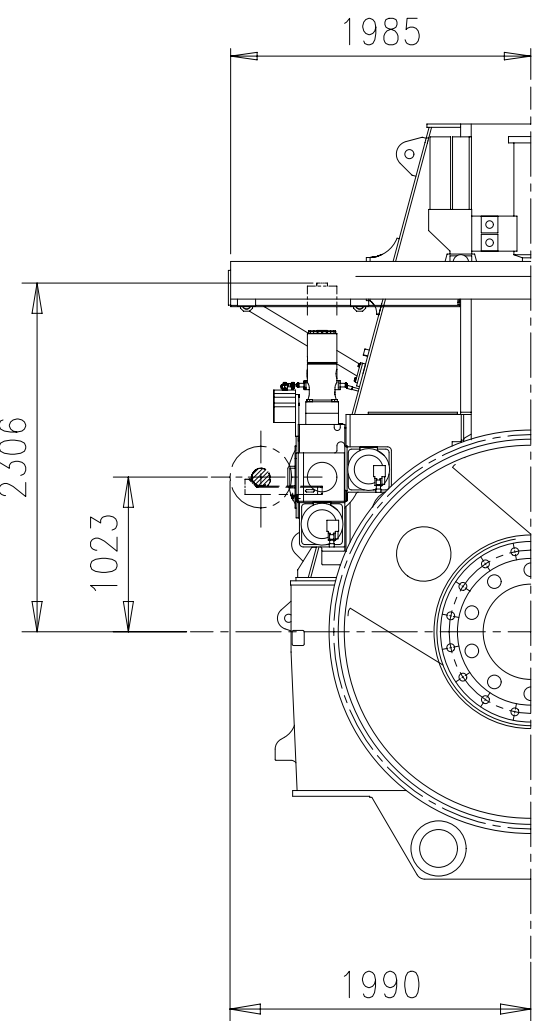
ENGINE ROOM HATCH



RECOMMENDED

MINIMUM

AREA TO BE COVERED BY THE ENGINE ROOM CRANE




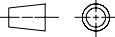
TURBOCHARGER 1x A170

ca. Schwerpunkt
APPROX. CENTRE OF GRAVITY

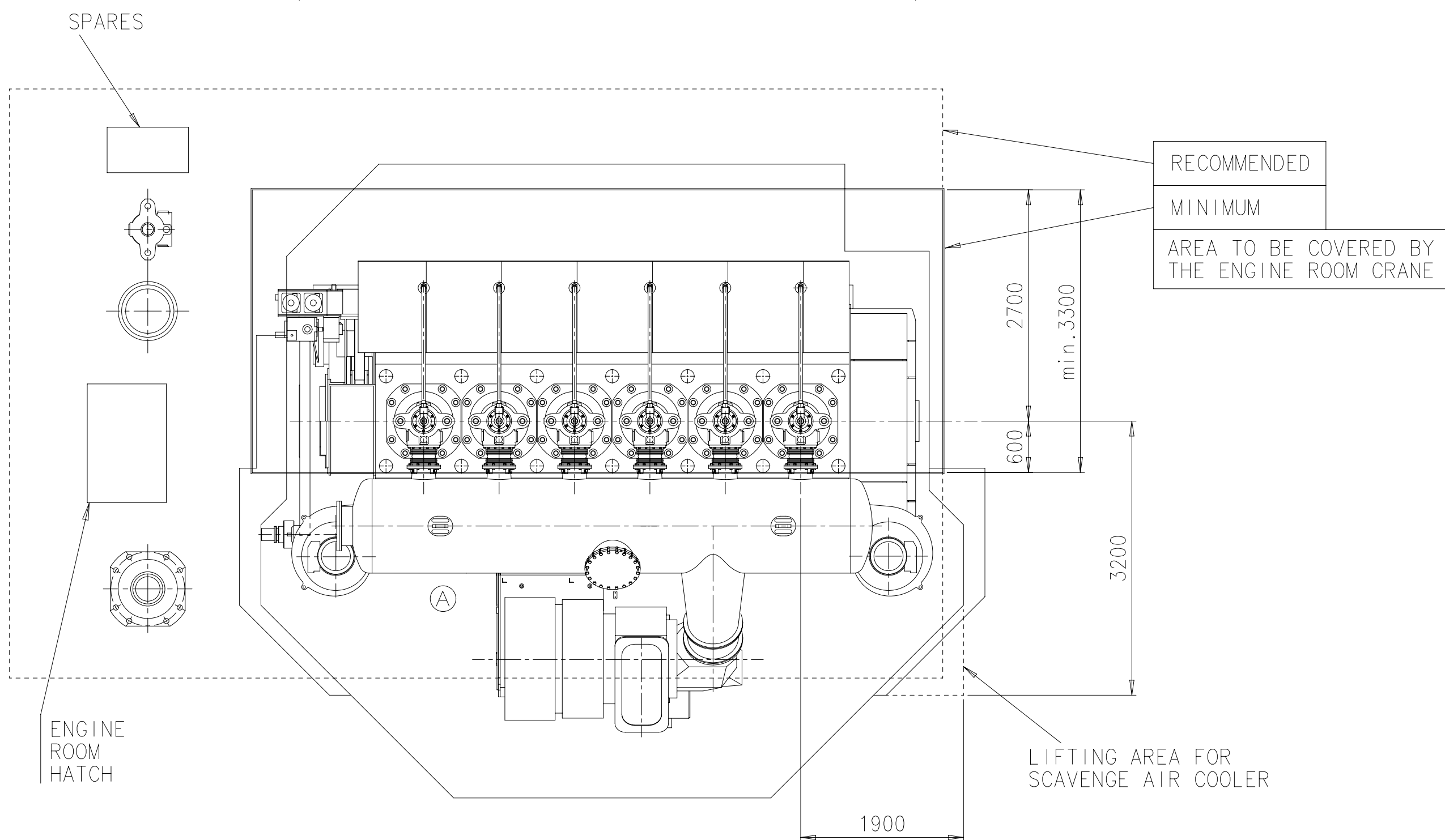
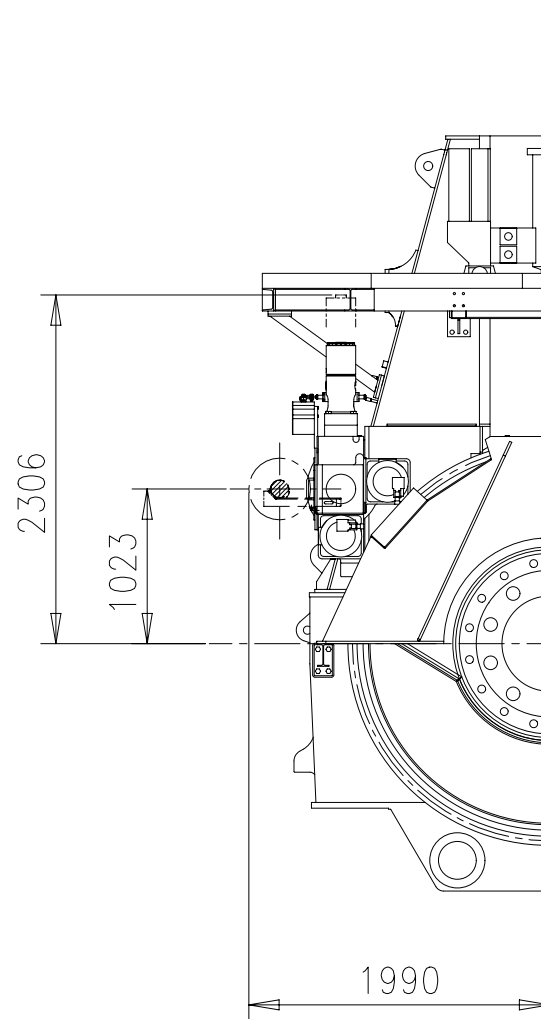
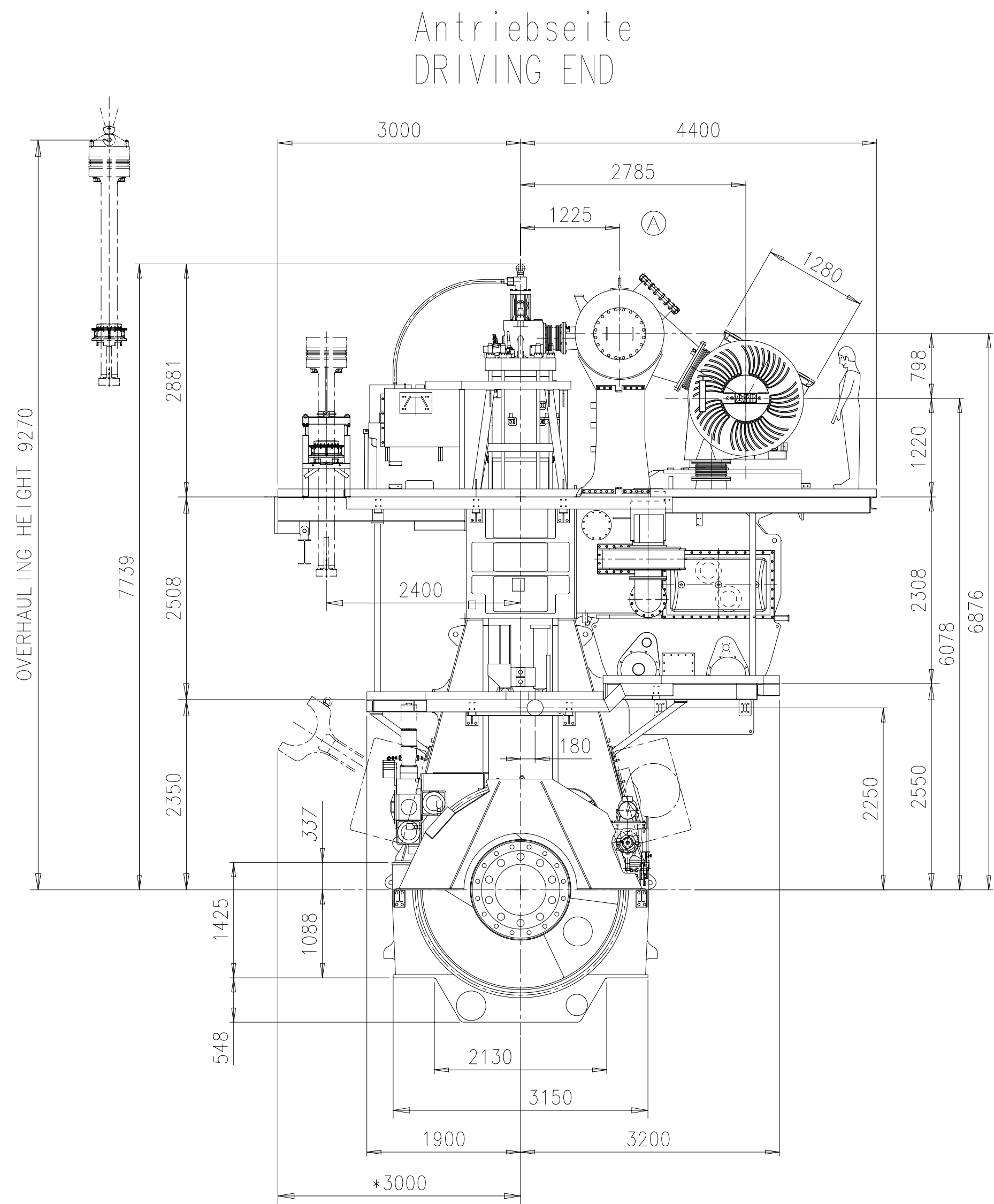
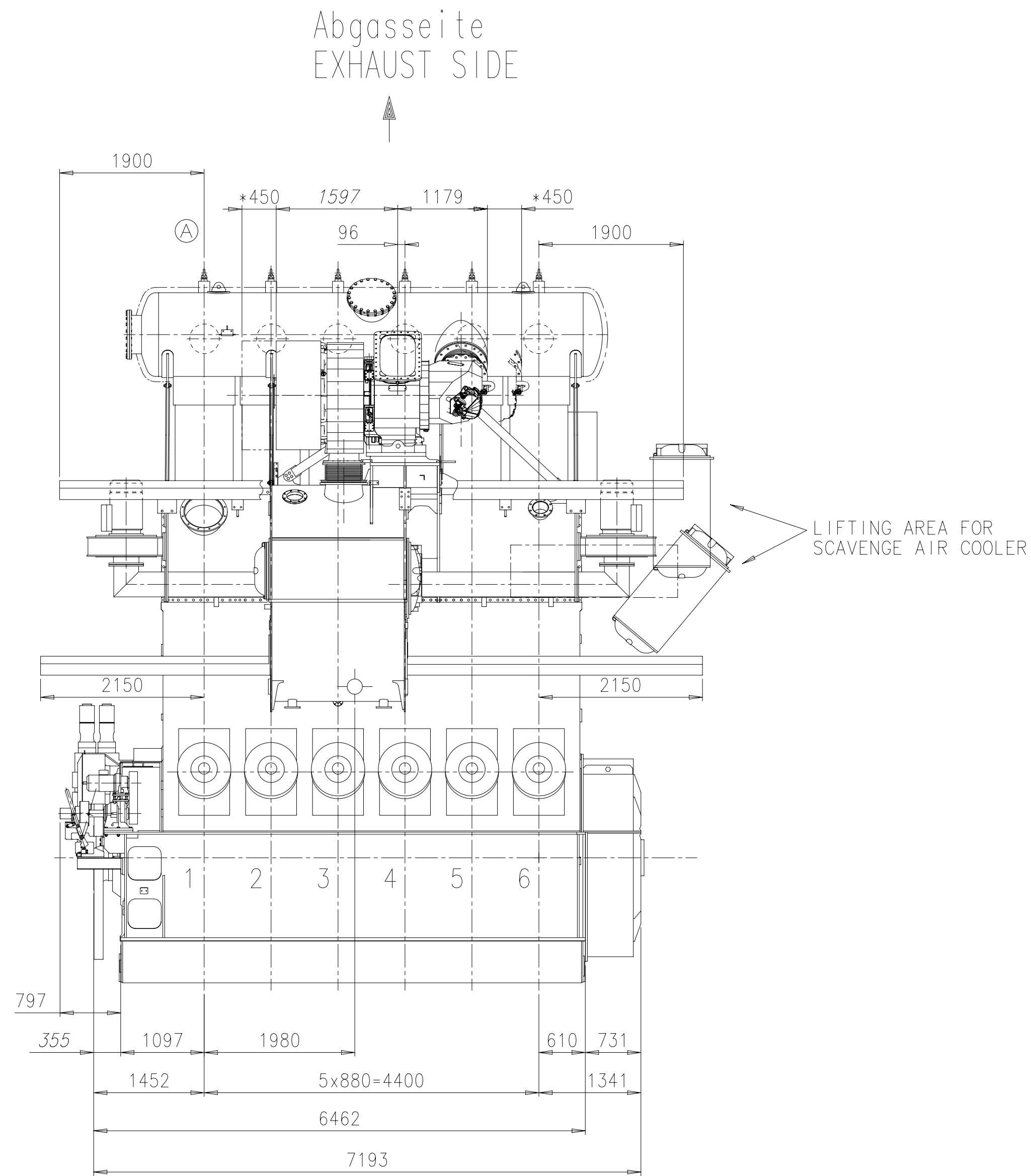
* Platz fuer Demontage
SPACE FOR REMOVAL

Gewicht ohne Wasser und Oel= 225 t
WEIGHT WITHOUT WATER AND OIL

PLEASE NOTE:
MAIN STAIRS WITH MORE THAN 4 STEPS ONLY
IN LONGITUDINAL DIRECTION OF THE ENGINE.

Free space for l.c.		Q-Code XXXXXX						Main Drw. H																	
Modif.		A		EAAD087192		11.11.2016		B		EAAD096542		28.04.2021		ISO; JIS											
		Number		Drawn date				Number		Drawn date				Number		Drawn date									
Product 6RT-flex50-D				ENGINE OUTLINE VIEW																					
 Winterthur Gas & Diesel				Motoransichten																					
Units		mm kg		NX				Basic Material						Net Weight 0,001											
Made		25.08.2016		ihe003		Ivan HERCEG		Scale		1:50		Size		A1		Page		1/1		Material		ID		PAAD237747	
Chkd		06.09.2016		hda002		Dörre		Design Group		0812		Drawing ID		DAAD081496		Rev.		B							
Appd		06.09.2016		mda006		Dacic																			

Download
"DXF file"



Turbolader: 1xA270-L
TURBOCHARGER

Gewicht ohne Wasser und Öl = 225 t
WEIGHT WITHOUT WATER AND OIL

ca. Schwerpunkt
APPROX. CENTRE OF GRAVITY

* = Platz fuer Demontage
SPACE FOR REMOVAL

(A)

PLEASE NOTE:
MAIN STAIRS WITH MORE THAN 4 STEPS ONLY
IN LONGITUDINAL DIRECTION OF THE ENGINE

Free space for l.c.				D-Code XXXXX Standard ISO; JIS		Main Drw. H	
Modif.	A	EAAD096542	27.04.2021				
Number		Drawn date		Number		Drawn date	
Product 6RT-flex50-D		ENGINE OUTLINE VIEW		Motoransichten			
Units	mm kg	NX	Basic Material	Net Weight 0,001			
Made	21.09.2016	ihe003	Ivan HERCEG	Scale	1:50	Size	A1
Chkd	17.11.2016	ast044	Stephan	Design Group		Page	1/1
Appd	17.11.2016	bha009	Haag	0812	Drawing ID	DAAD082072	Rev. A

DIMENSIONS ONLY FOR REFERENCE
THIS OUTLINE DRAWING CAN NOT BE USED FOR FINAL DESIGN.
PLEASE TAKE CORRESPONDING DESIGN GROUP

SURFACE PROTECTION SEE GROUP 0344
TOLERANCING PRINCIPLE ISO8015
GENERAL TOLERANCES ACCORDING TO ISO2768-mK

WinGD-6RT-flex50-D_Engine-outline-views

TRACK CHANGES

DATE	SUBJECT	DESCRIPTION
2018-02-26	DRAWING SET	First web upload
2021-05-19	107.396.383.500 PAAD135558 PAAD147188 PAAD237747 PAAD239797 PAAD316789	Revised Engine Outline Views for Turbocharger type 1xA165, 1xA175, 1xA165/A265, 1xA170 and 1xA270 have been updated.

DISCLAIMER

© Copyright by Winterthur Gas & Diesel Ltd.

All rights reserved. No part of this document may be reproduced or copied in any form or by any means (electronic, mechanical, graphic, photocopying, recording, taping or other information retrieval systems) without the prior written permission of the copyright owner.

THIS PUBLICATION IS DESIGNED TO PROVIDE AN ACCURATE AND AUTHORITATIVE INFORMATION WITH REGARD TO THE SUBJECT-MATTER COVERED AS WAS AVAILABLE AT THE TIME OF PRINTING. HOWEVER, THE PUBLICATION DEALS WITH COMPLICATED TECHNICAL MATTERS SUITED ONLY FOR SPECIALISTS IN THE AREA, AND THE DESIGN OF THE SUBJECT-PRODUCTS IS SUBJECT TO REGULAR IMPROVEMENTS, MODIFICATIONS AND CHANGES. CONSEQUENTLY, THE PUBLISHER AND COPYRIGHT OWNER OF THIS PUBLICATION CAN NOT ACCEPT ANY RESPONSIBILITY OR LIABILITY FOR ANY EVENTUAL ERRORS OR OMISSIONS IN THIS BOOKLET OR FOR DISCREPANCIES ARISING FROM THE FEATURES OF ANY ACTUAL ITEM IN THE RESPECTIVE PRODUCT BEING DIFFERENT FROM THOSE SHOWN IN THIS PUBLICATION. THE PUBLISHER AND COPYRIGHT OWNER SHALL UNDER NO CIRCUMSTANCES BE HELD LIABLE FOR ANY FINANCIAL CONSEQUENTIAL DAMAGES OR OTHER LOSS, OR ANY OTHER DAMAGE OR INJURY, SUFFERED BY ANY PARTY MAKING USE OF THIS PUBLICATION OR THE INFORMATION CONTAINED HEREIN.