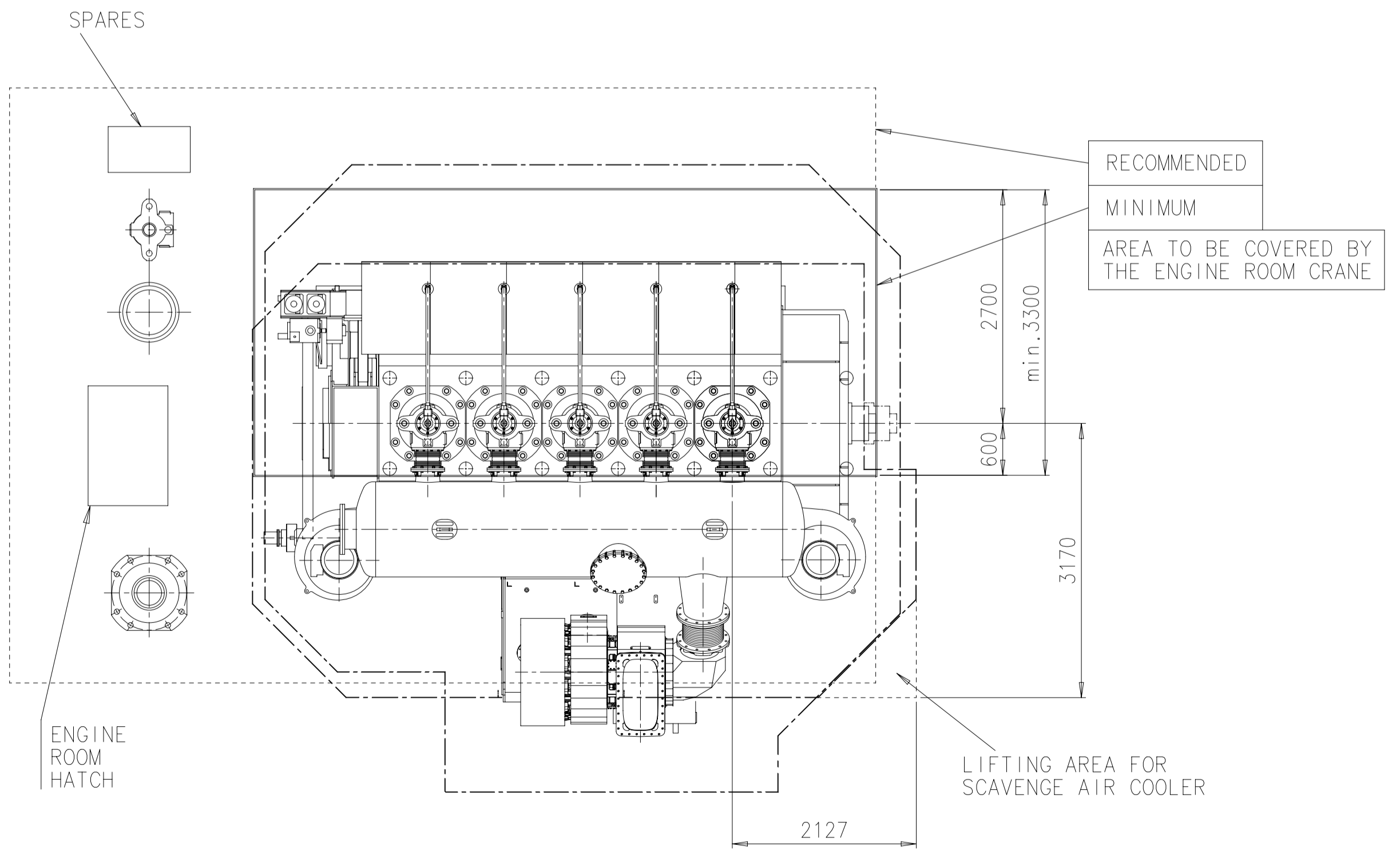
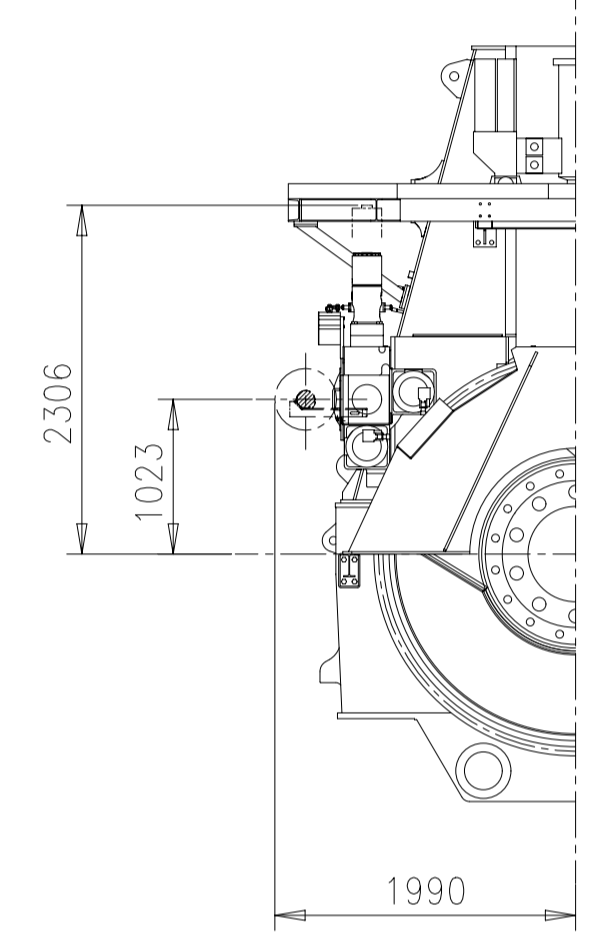
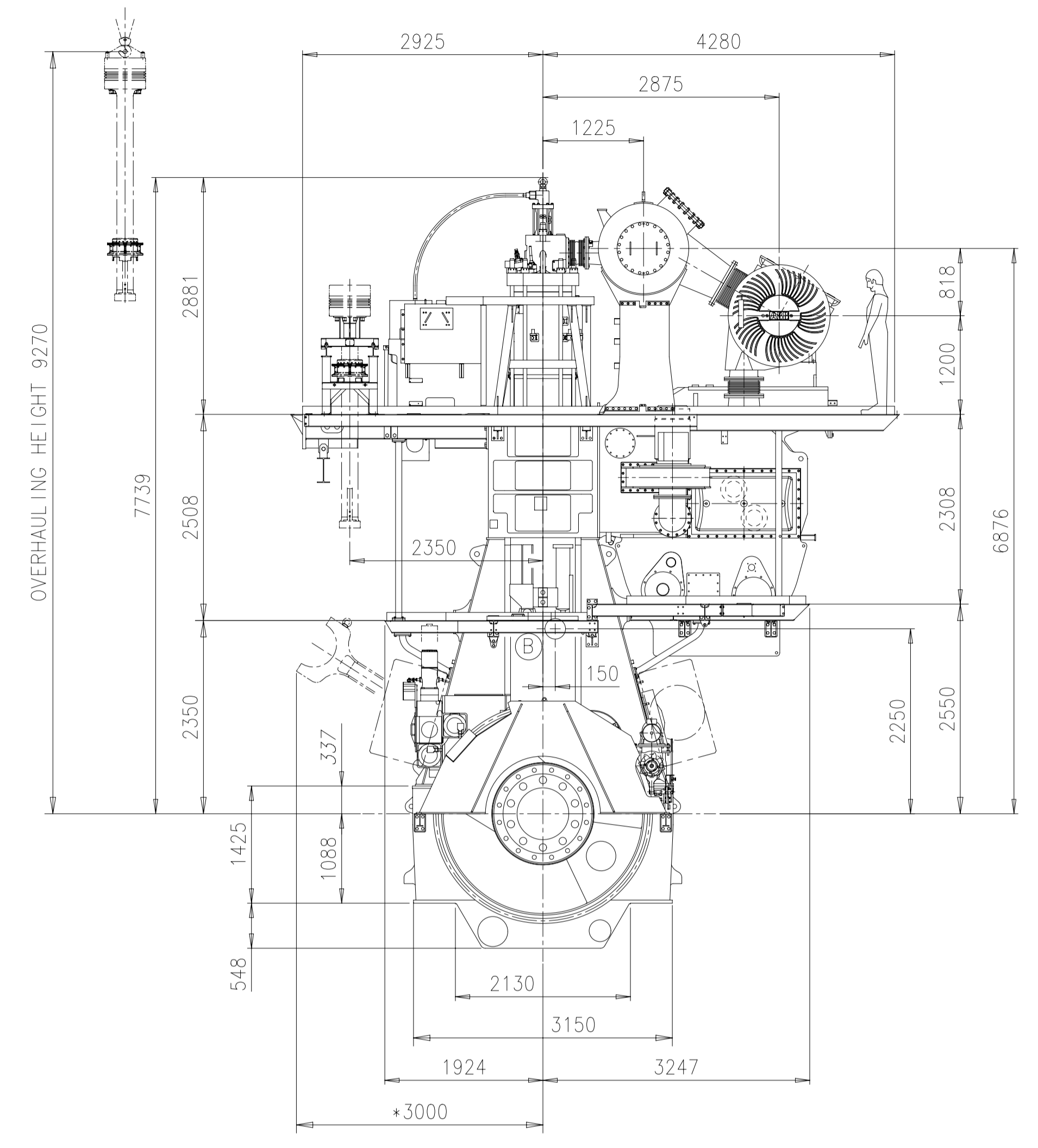
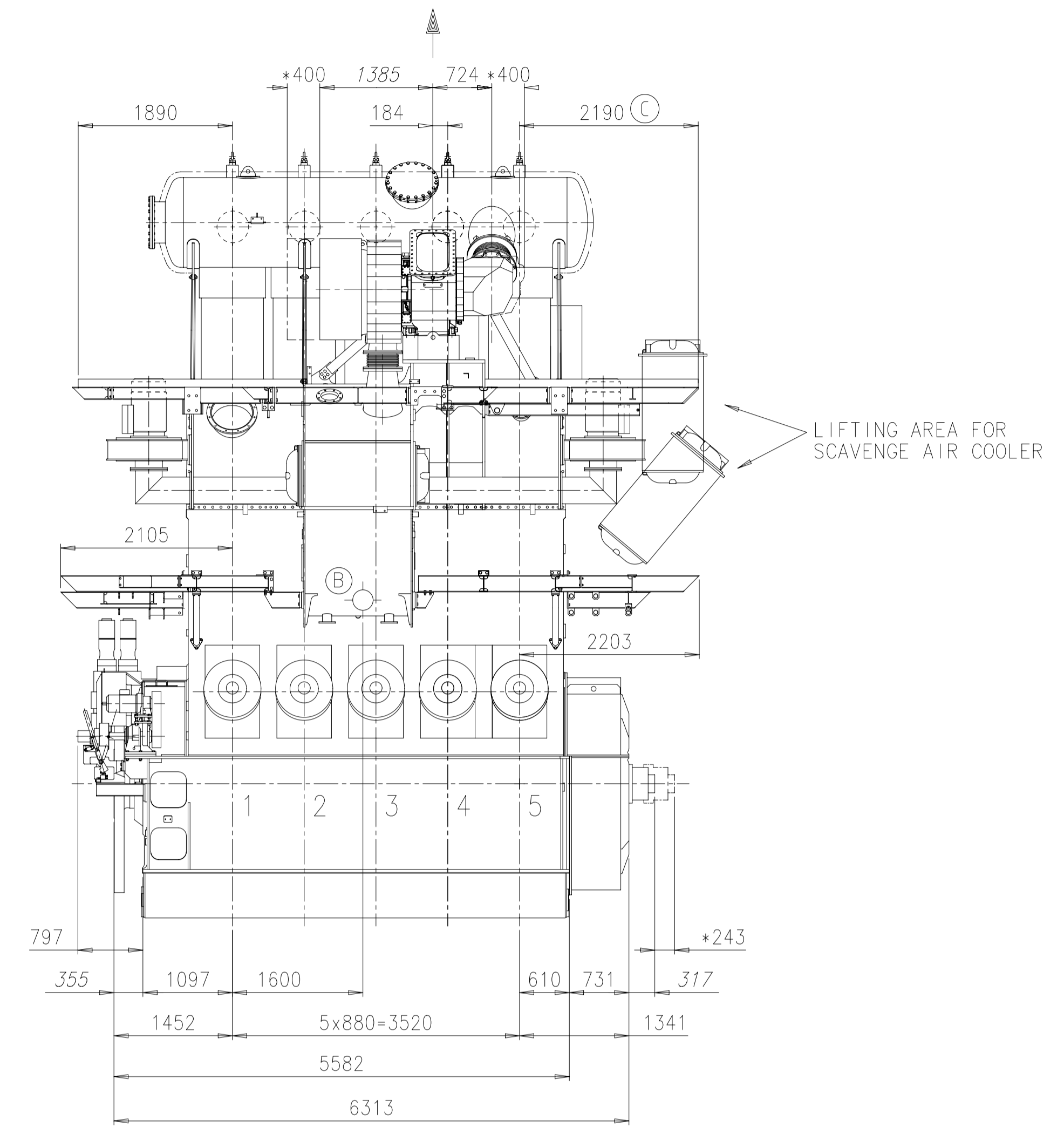


Download  
"DXF file"

Abgasseite  
EXHAUST SIDE

Antriebsseite  
DRIVING END



Turbolader: 1x1A165-L (A)  
TURBOCHARGER

Gewicht ohne Wasser und Öl = 189 t  
WEIGHT WITHOUT WATER AND OIL

Gezeichnet mit Winkeltransmitter  
DRAWN WITH CRANK ANGLE SENSOR

\* = Platz fuer Demontage  
SPACE FOR REMOVAL

ca. Schwerpunkt  
APPROX. CENTRE OF GRAVITY

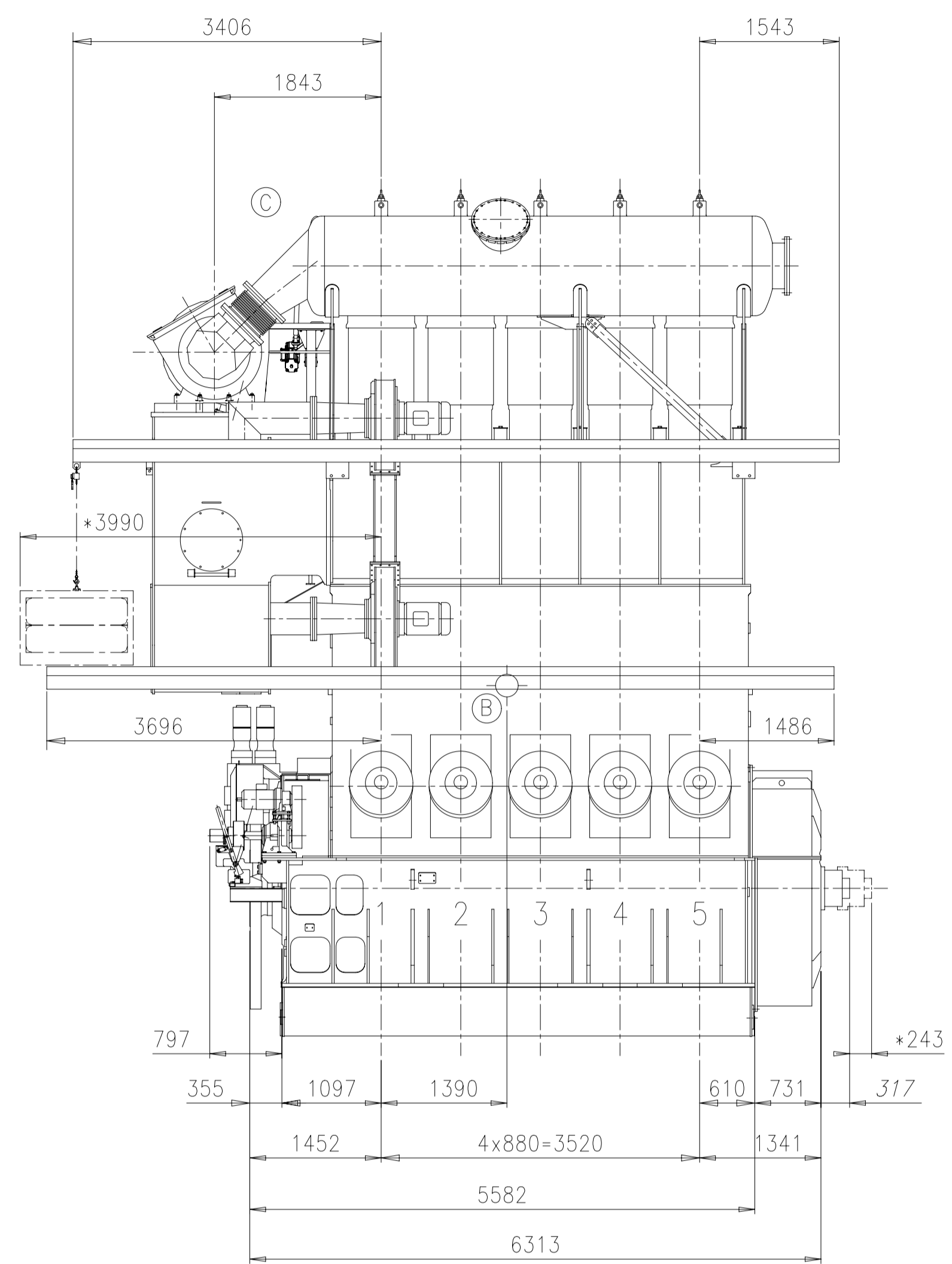
**PLEASE NOTE:**  
MAIN STAIRS WITH MORE THAN 4 STEPS ONLY  
IN LONGITUDINAL DIRECTION OF THE ENGINE

Free space for file	O-Code XXXXX				Main Drw. H
Modif.	A	B	C		
Number	EAAD085139	EAAD085829	EAAD096095		
Drawn date	06.05.2014	11.04.2016	09.03.2021		
Product	5RT-r1ex50-D		ENGINE OUTLINE VIEW		
Basic Material	NX		Motorsansichten		
Units	mm	kg		Net Weight	0,001
Scale	1:50	Size	A1	Page	1/1
Design Group	nug001 Ugale	Material ID	PAAT012480		
Appd	25.10.2013 cma011 Manhart	Drawing ID	DAAT002994		
Rev.					C

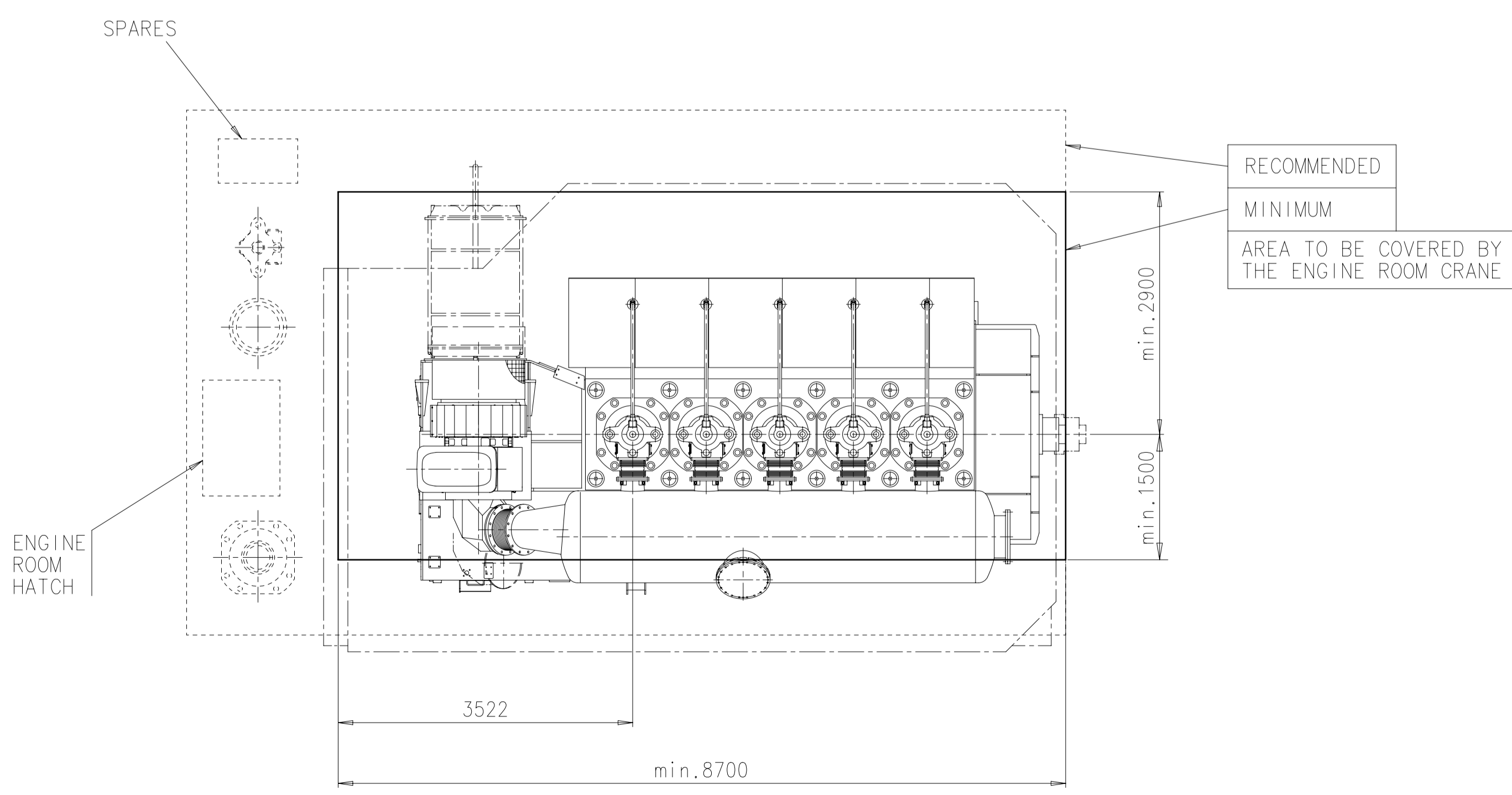
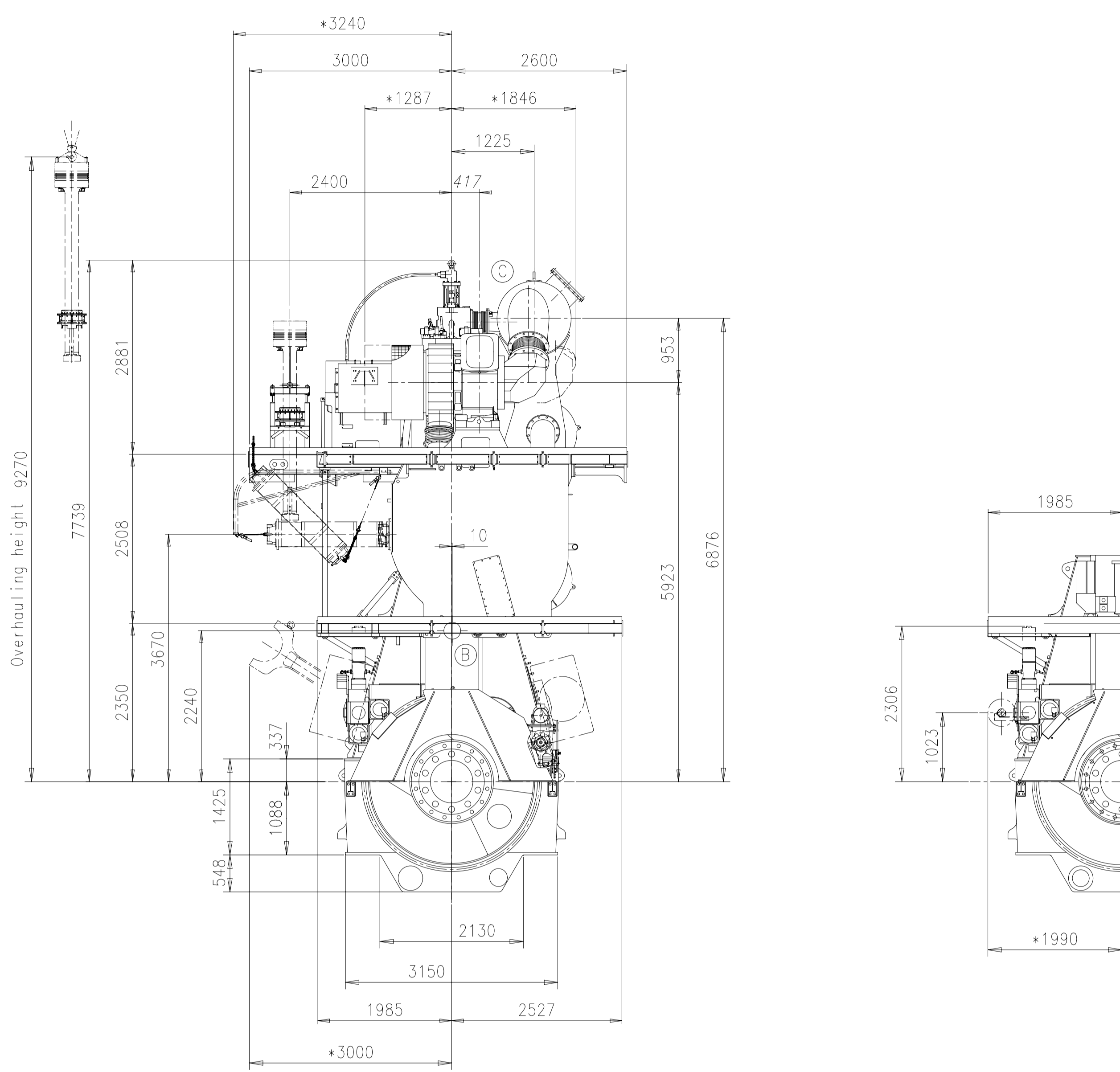
SURFACE PROTECTION SEE GROUP 0344  
TOLERANCING PRINCIPLE ISO8015  
GENERAL TOLERANCES ACCORDING TO ISO2768-mK

Download  
"DXF file"

EXHAUST SIDE



DRIVING END



Turbolader: 1x A165-L  
TURBOCHARGER

PLEASE NOTE:  
MAIN STAIRS WITH MORE THAN 4 STEPS ONLY  
IN LONGITUDINAL DIRECTION OF THE ENGINE.

ca. Schwerpunkt  
APPROX. CENTRE OF GRAVITY

Gewicht ohne Wasser und Öl = 200 t  
WEIGHT WITHOUT WATER AND OIL

\* = Platz fuer Demontage  
SPACE FOR REMOVAL

Free space for lic.	O-Code XXXXX	Main Drw. H
Modif. Number	Drawn date	Number
EAAD083847	06.06.2012	23
EAAD084255	23.11.2012	24
EAAD085829	11.04.2016	25
EAAD096542	27.04.2021	26

Product	ENGINE OUTLINE VIEW
5RT-flex50-B	Motoransichten
5RT-flex50-D	

Units	mm kg	NX	Basic Material	Net Weight	0,001
Surface Protection	SEE GROUP 0344	Made	29.05.2012	hri004	Riser
Tolerancing Principle	ISO 8015	Scale	1:50	Size	A1
Design Group	05.06.2012 mgr026 Graf	Page	1/1	Material ID	PAAD089355
General Tolerances	ACCORDING TO ISO 2768-mK	Appd	06.06.2012 oha005 Habicht	Drawing ID	DAAD028287
				Rev.	C



## WinGD-5RT-flex50D\_ Engine-Outline-View

### TRACK CHANGES

DATE	SUBJECT	DESCRIPTION
2018-02-26	DRAWING SET	First web upload
2021-05-13	DAAD010479 DAAD028287 DAAT002994	Revised Engine Outline Views for Turbocharger type 1xA170, DE_1xA165-L & ES_1xA165-L have been updated.

### DISCLAIMER

© Copyright by Winterthur Gas & Diesel Ltd.

All rights reserved. No part of this document may be reproduced or copied in any form or by any means (electronic, mechanical, graphic, photocopying, recording, taping or other information retrieval systems) without the prior written permission of the copyright owner.

THIS PUBLICATION IS DESIGNED TO PROVIDE AN ACCURATE AND AUTHORITATIVE INFORMATION WITH REGARD TO THE SUBJECT-MATTER COVERED AS WAS AVAILABLE AT THE TIME OF PRINTING. HOWEVER, THE PUBLICATION DEALS WITH COMPLICATED TECHNICAL MATTERS SUITED ONLY FOR SPECIALISTS IN THE AREA, AND THE DESIGN OF THE SUBJECT-PRODUCTS IS SUBJECT TO REGULAR IMPROVEMENTS, MODIFICATIONS AND CHANGES. CONSEQUENTLY, THE PUBLISHER AND COPYRIGHT OWNER OF THIS PUBLICATION CAN NOT ACCEPT ANY RESPONSIBILITY OR LIABILITY FOR ANY EVENTUAL ERRORS OR OMISSIONS IN THIS BOOKLET OR FOR DISCREPANCIES ARISING FROM THE FEATURES OF ANY ACTUAL ITEM IN THE RESPECTIVE PRODUCT BEING DIFFERENT FROM THOSE SHOWN IN THIS PUBLICATION. THE PUBLISHER AND COPYRIGHT OWNER SHALL UNDER NO CIRCUMSTANCES BE HELD LIABLE FOR ANY FINANCIAL CONSEQUENTIAL DAMAGES OR OTHER LOSS, OR ANY OTHER DAMAGE OR INJURY, SUFFERED BY ANY PARTY MAKING USE OF THIS PUBLICATION OR THE INFORMATION CONTAINED HEREIN.