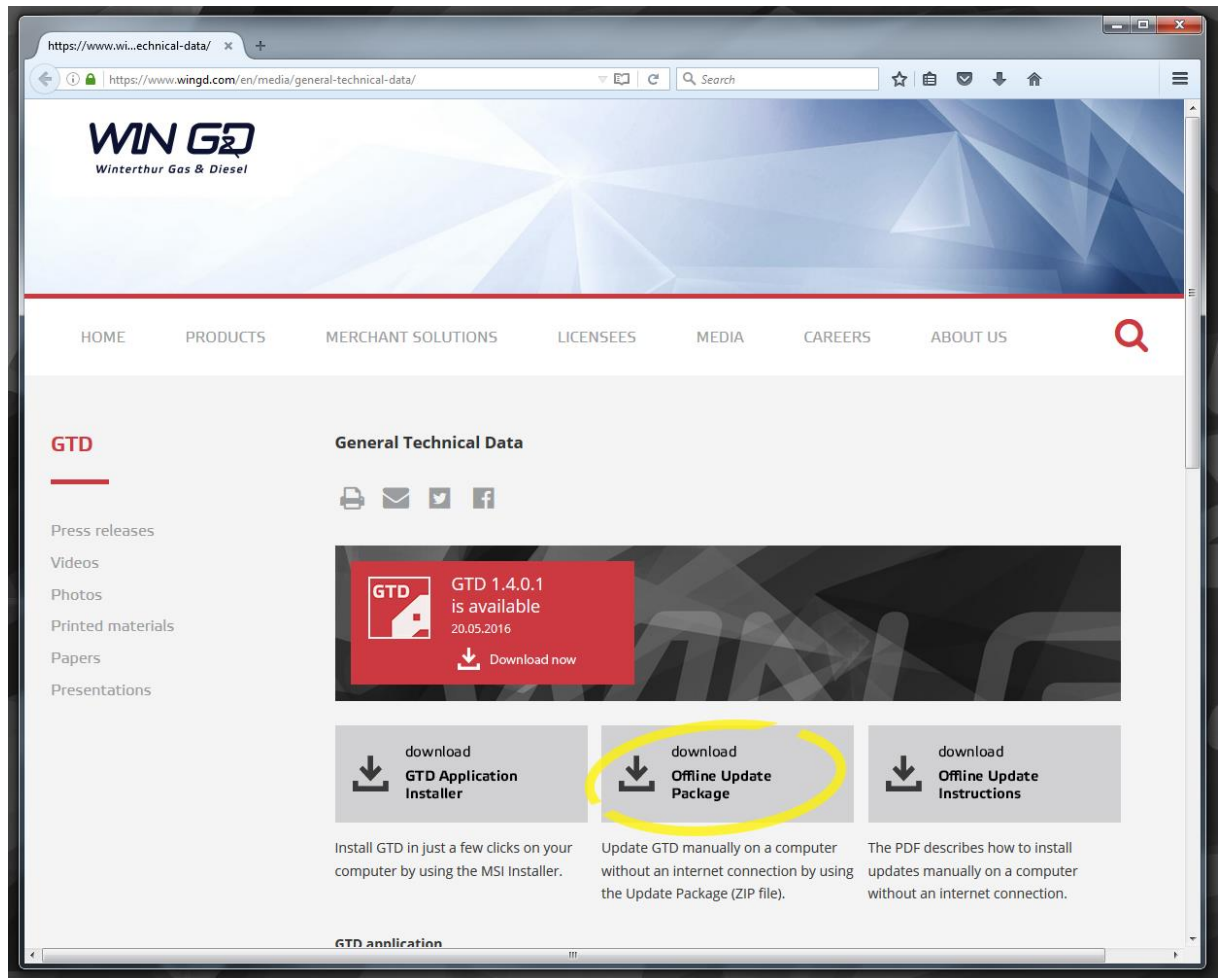


GTD – Manual Update Instructions

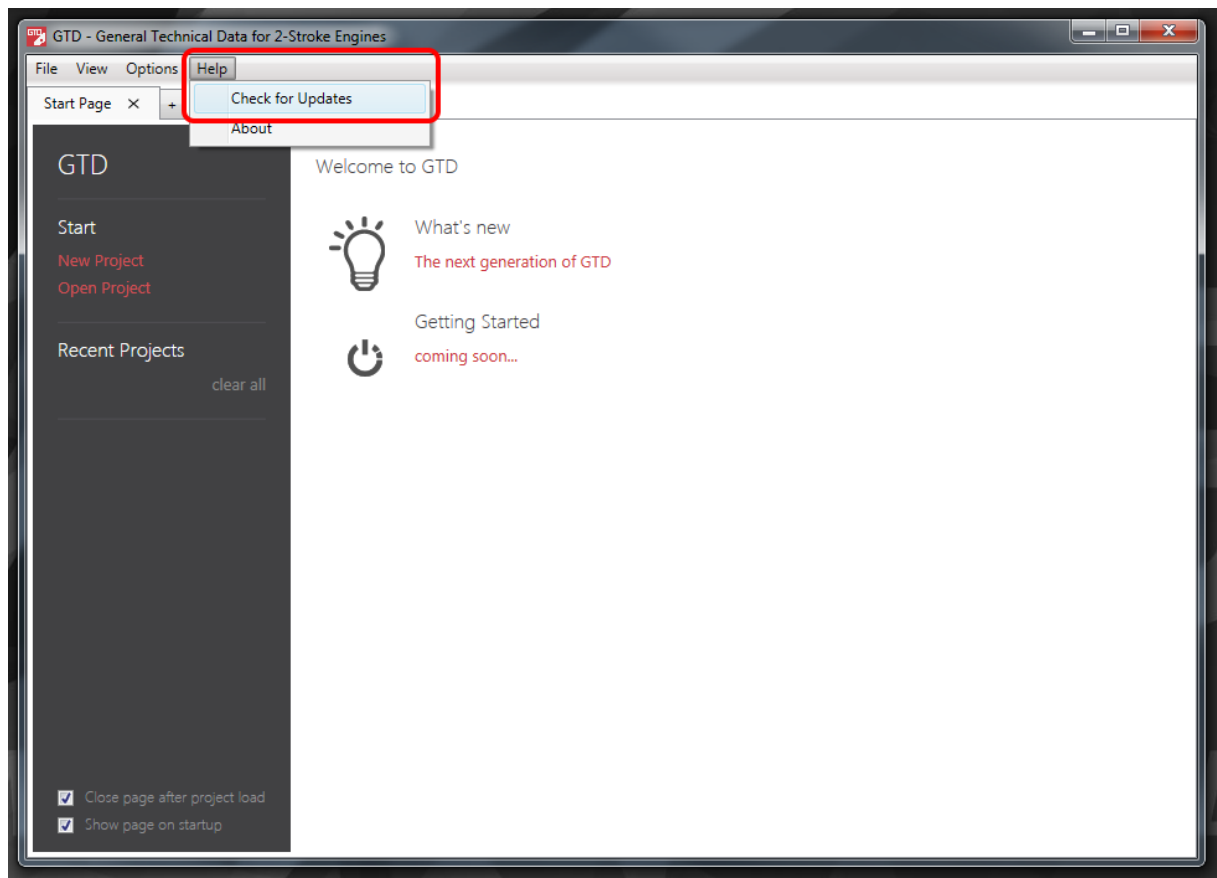
This document describes how to install GTD updates manually. Please follow the step by step instructions carefully to ensure a successful application update.

1. The latest GTD offline update package can be downloaded from the following WinGD website:
<https://www.wingd.com/en/media/general-technical-data/>

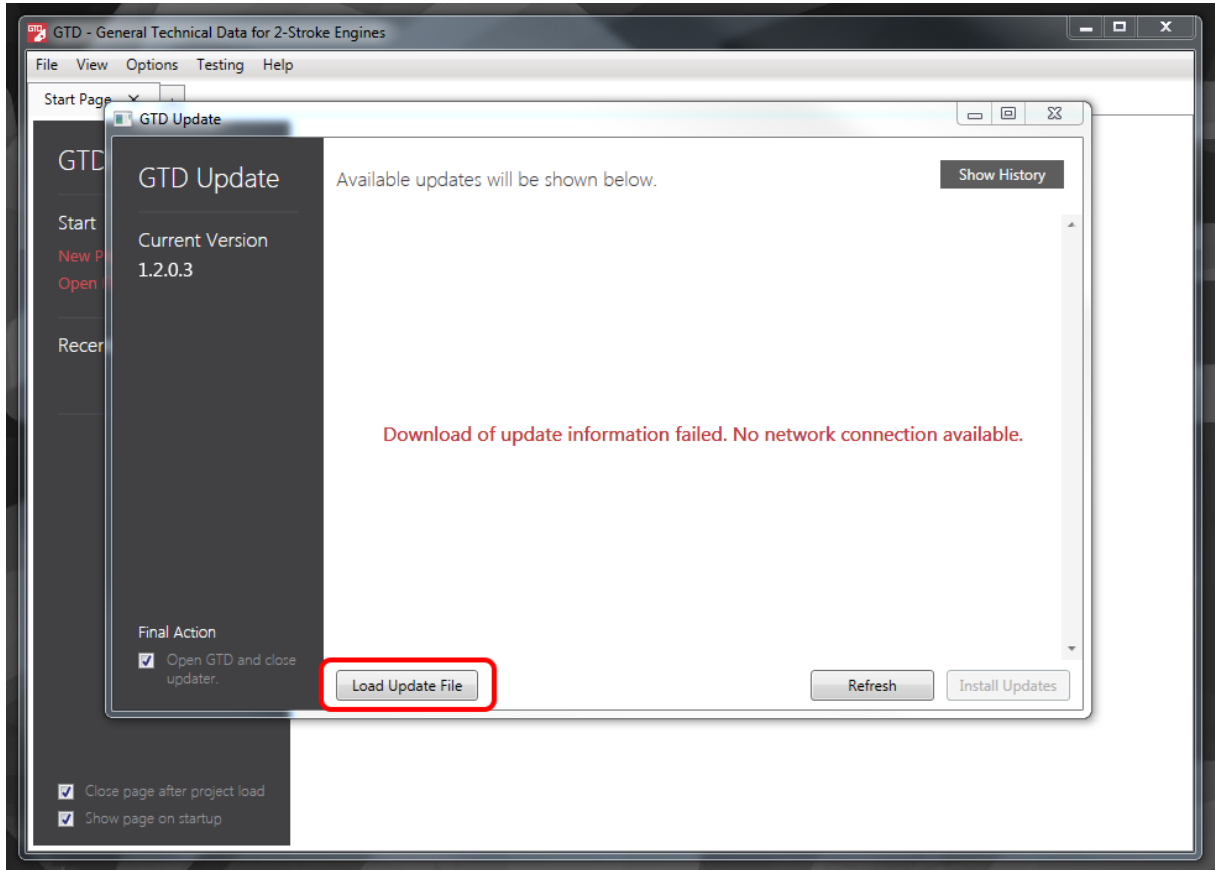
Open this link in your web browser and click on “download Offline Update Package” (see figure below).



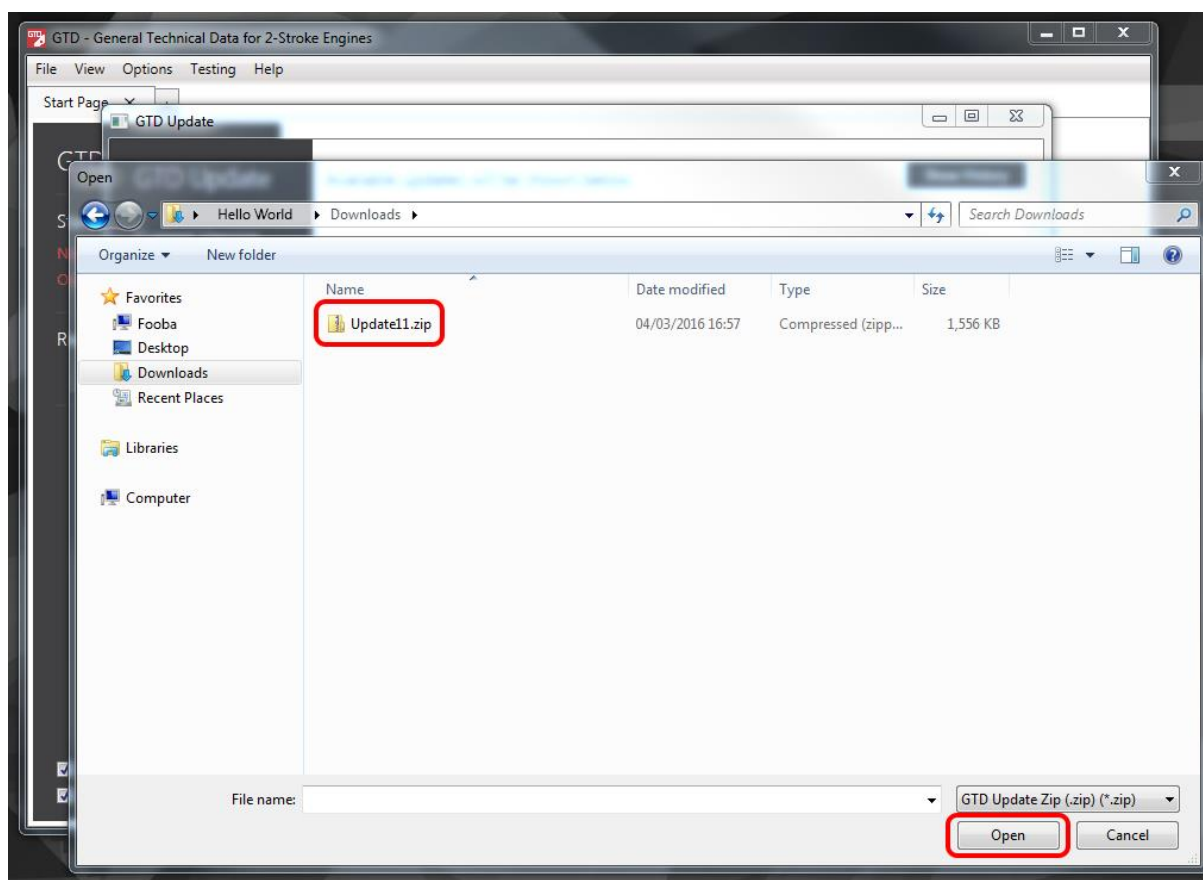
2. Start the GTD application, open the "Help" menu and click on the entry "Check for Updates". Please wait a few seconds until the updater has been started.



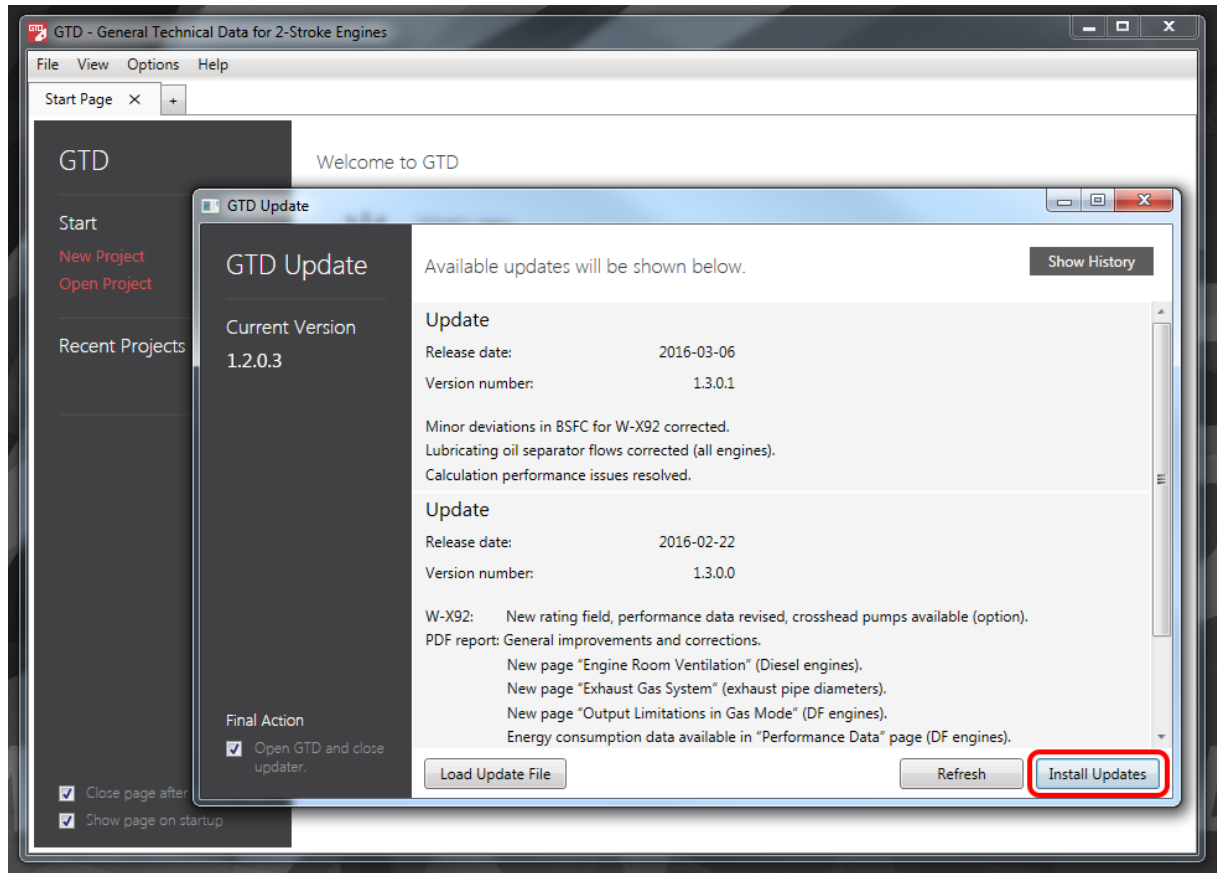
3. The updater will display an error message if you do not have an active internet connection. Ignore this message and click on the "Load Update File" button (see highlighted button in the figure below).



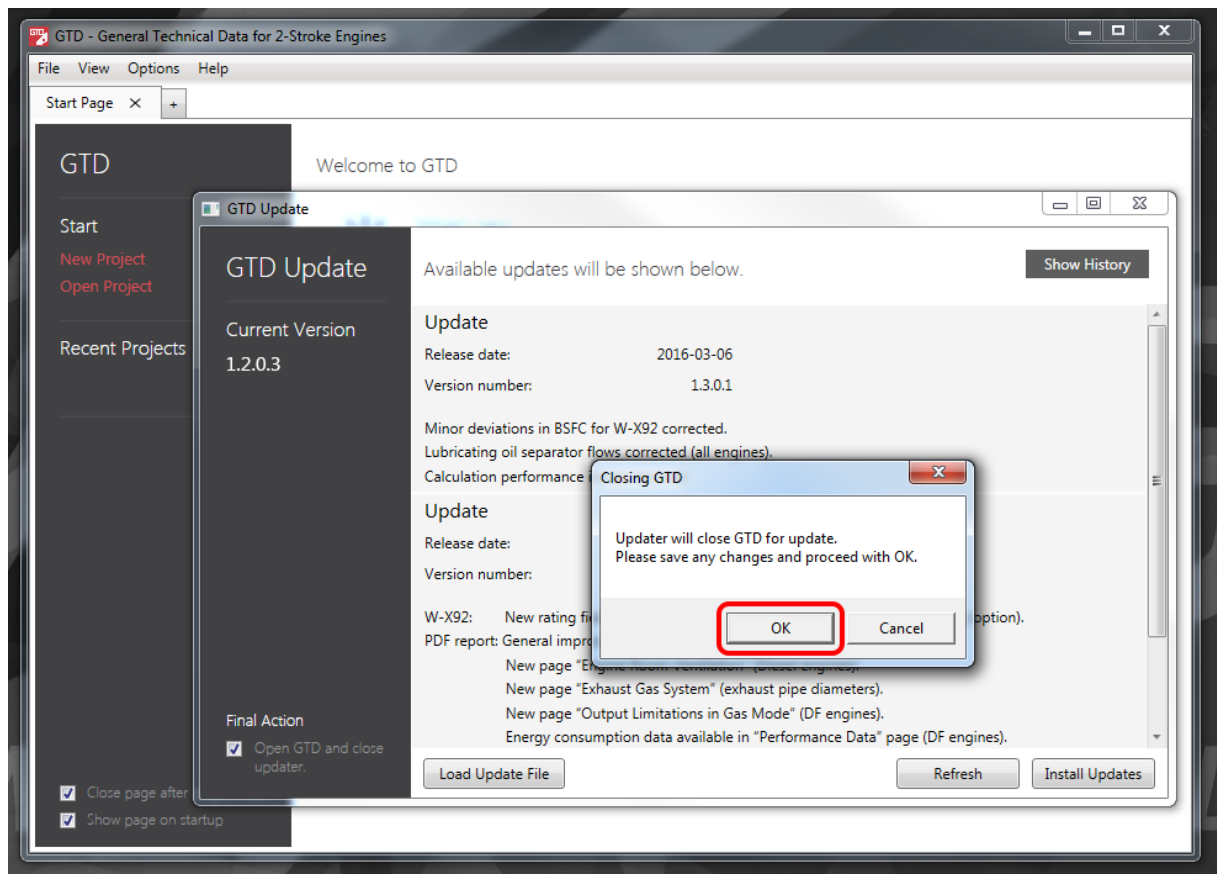
4. Now browse to the file location where you have stored the latest GTD offline update package and click on open. The updater will now validate the update package.



5. The updater provides a list of available updates if your installed version of GTD is outdated. Please click on the "Install Updates" button (see highlighted button in the figure below).



- The updater needs to close the GTD application. Please click on "OK" if the dialog window "Closing GTD" appears otherwise you cannot proceed with the update process.



7. Your GTD application will be updated. Congratulations!

