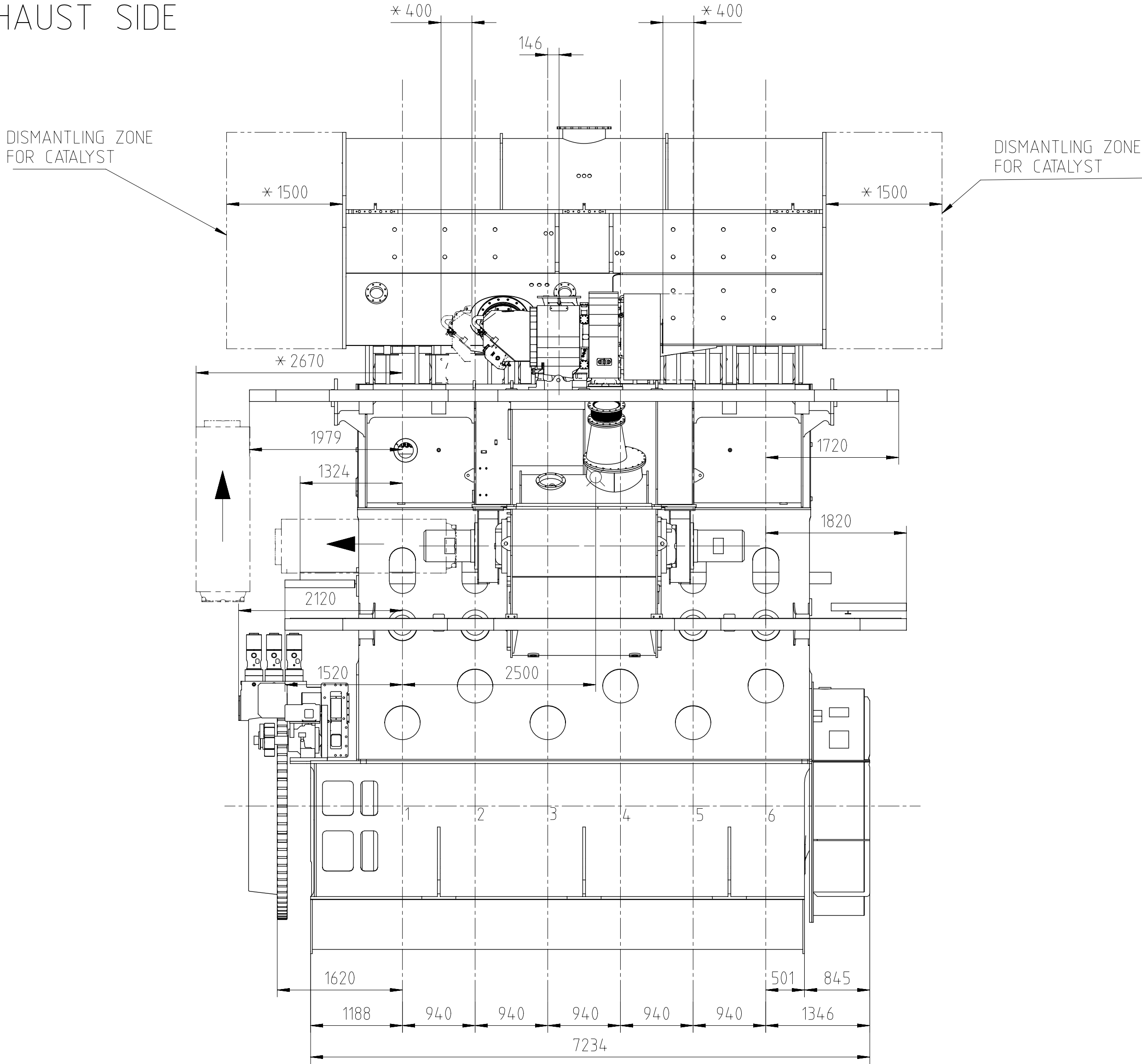
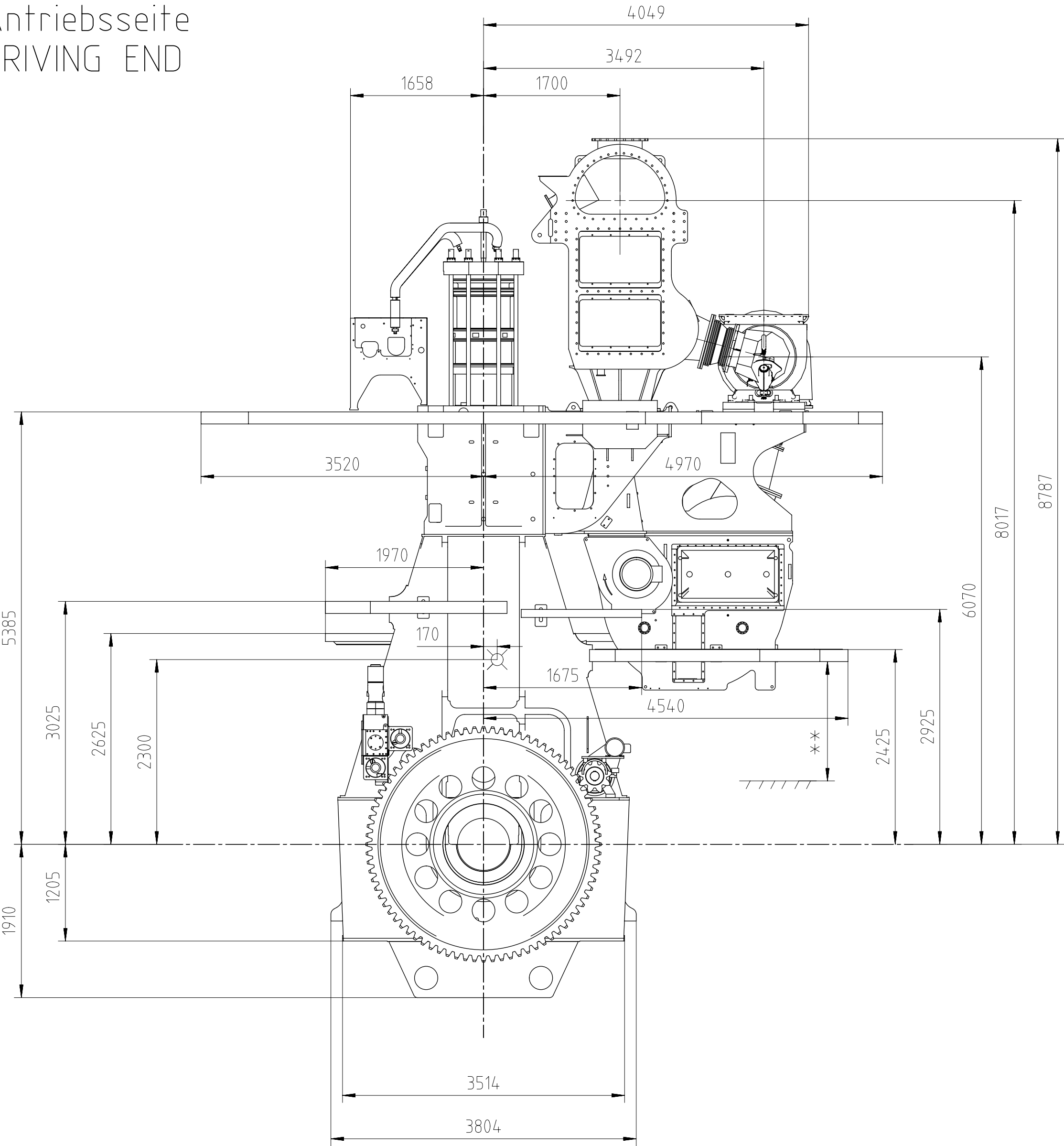


Download
"DXF file"

Abgasseite
EXHAUST SIDE



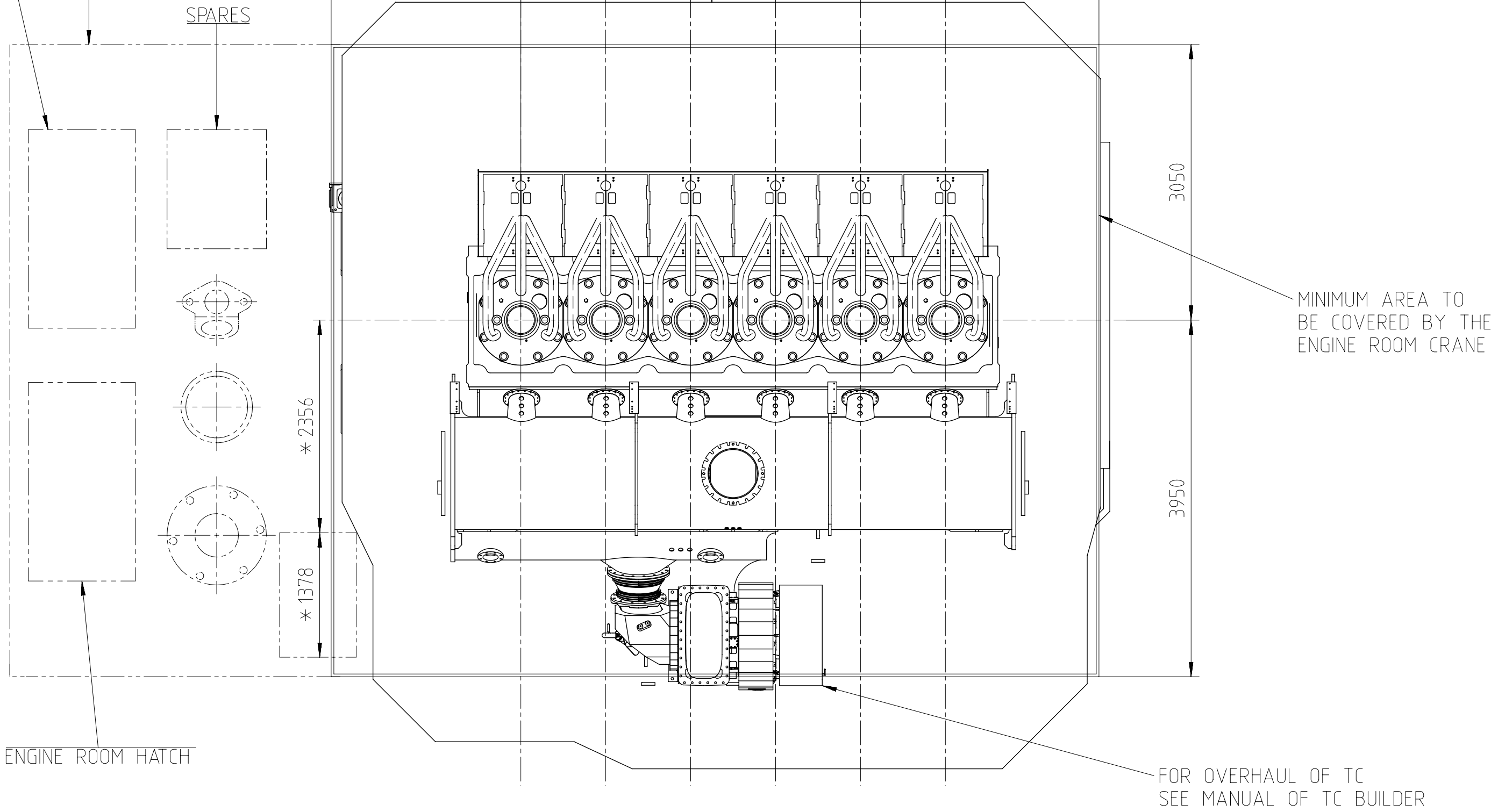
Antriebsseite
DRIVING END



TOOLS FOR PISTON
AND CYL. COVER
DISMANTLING

RECOMMENDED AREA TO
BE COVERED BY THE
ENGINE ROOM CRANE

PLATFORM
OUTLINE

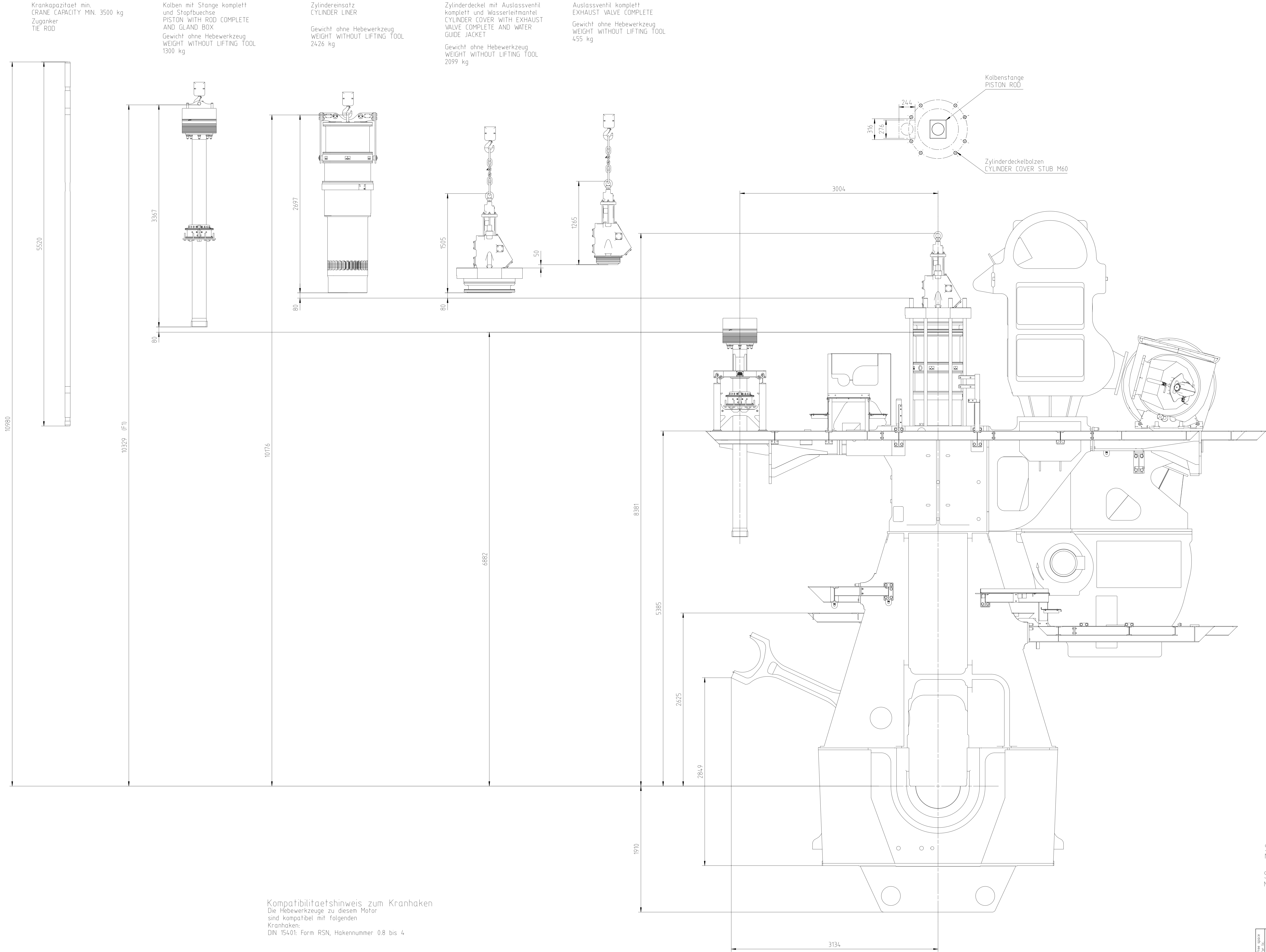


☒ APPROXIMATE CENTER OF GRAVITY
WEIGHT WITHOUT WATER OR OIL = 271 t
* SPACE FOR REMOVAL
** ATTENTION: FREE SPACE FOR PASSAGE
IS REDUCED, IF THE BASIS LEVEL ON
THE SHIP IS HIGHER THAN THE CENTER
OF CRANKSHAFT.

TURBOCHARGER A165-L

Net Weight	0,001	1	001	PAAD336676	DISMANTLING DIMENSIONS	DAAD120355	0,001
Quantity PER ENGINE	SEQ. NO.	Material ID	Material Name	Dimension, Occ.	Standard or Drawing	Basic Material Material Standard	Weight GR./NET
PAAD359267	Free space for TC					XXXXX Standard ISO	Main Drw. H
Modif.	Number	Drawn date	Number	Drawn date	Number	Drawn date	Number
Materials							
Units	mm kg	NX	Product CX52	Basic Material	Net Weight		
Scale	1:45	Size A1	Page 1/1	Material ID	DAAD132076	Rev.	-
Design Group	0812	Drawing ID					
Design Group	0812	Drawing ID					
Design Group	0812	Drawing ID					

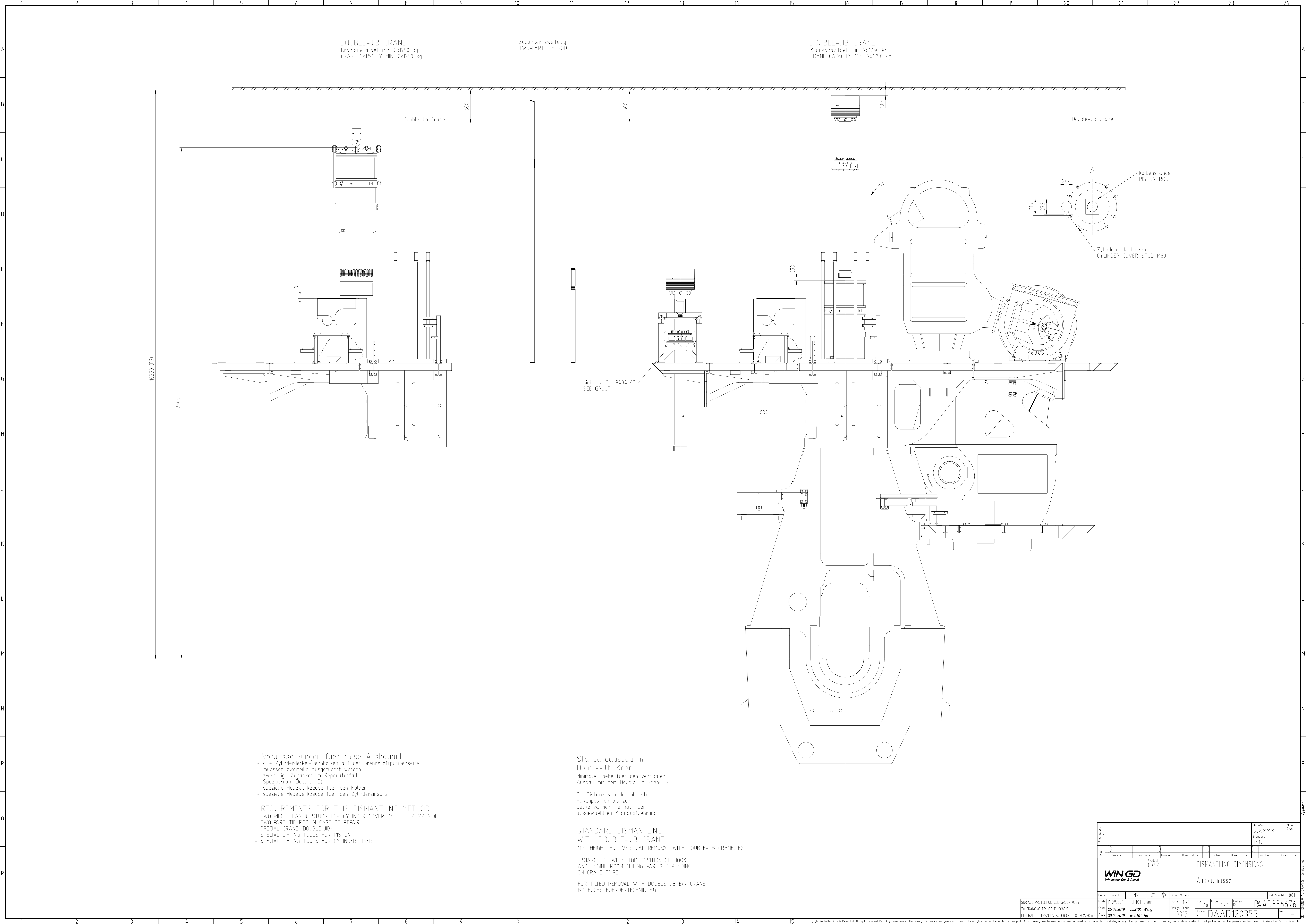
DIMENSIONS FOR REFERENCE ONLY!
THIS OUTLINE DRAWING CAN NOT
BE USED FOR THE FINAL DESIGN!
PLEASE TAKE THE CORRESPONDING
DESIGN GROUP!



Standardausbau
Minimale Höhe fuer den vertikalen Ausbau: F1

STANDARD DISMANTLING
MIN. HEIGHT FOR VERTICAL REMOVAL: F1

Free space for file				B-Code XXXXX Standard ISO				Plan Draw
Modif.	Number	Drawn date	Product	Number	Drawn date	Number	Drawn date	
			CX52					
WINGD Winthor Gas & Diesel				DISMANTLING DIMENSIONS Ausbaumasse				
Units	mm kg	NX	Basic Material	Scale	1:20	Size	A0	Page 1/3
Made	11.09.2019	1ch101	Uhen	Design Group	0812	Material	PAAD336676	Rev. -
Chd	25.09.2019	zwei101	Wang	Design Group	0812	Drawing	DAAD120355	Rev. -
Asst	30.09.2019	wher101	He	Design Group	0812	Drawing	DAAD120355	Rev. -
SURNAME PROTECTION SEE GROUP 0364				TOLERANCING PRINCIPLE ISO8015				
GENERAL TOLERANCES ACCORDING TO ISO2768-mK				IB - PREPRODUCTION - CONFIDENTIAL				



Voraussetzungen fuer diese Ausbautart

- alle Zylinderdeckel-Dehnbolzen auf der Brennstoffpumpenseite muessen zweiteilig ausgefuehrt werden
- zweiteilige Zuganker im Reparaturfall
- Spezialkran (Double-Jib)
- spezielle Hebewerkzeuge fuer den Kolben
- spezielle Hebewerkzeuge fuer den Zylindereinsatz

REQUIREMENTS FOR THIS DISMANTLING METHOD

- TWO-PIECE ELASTIC STUDS FOR CYLINDER COVER ON FUEL PUMP SIDE
- TWO-PART TIE ROD IN CASE OF REPAIR
- SPECIAL CRANE (DOUBLE-JIB)
- SPECIAL LIFTING TOOLS FOR PISTON
- SPECIAL LIFTING TOOLS FOR CYLINDER LINER

Standardausbau mit Double-Jib Kran

Minimale Hoehe fuer den vertikalen Ausbau mit dem Double-Jib Kran: F2

Die Distanz von der obersten Hakenposition bis zur Decke variiert je nach der ausgewaehlten Krahnausfuehrung

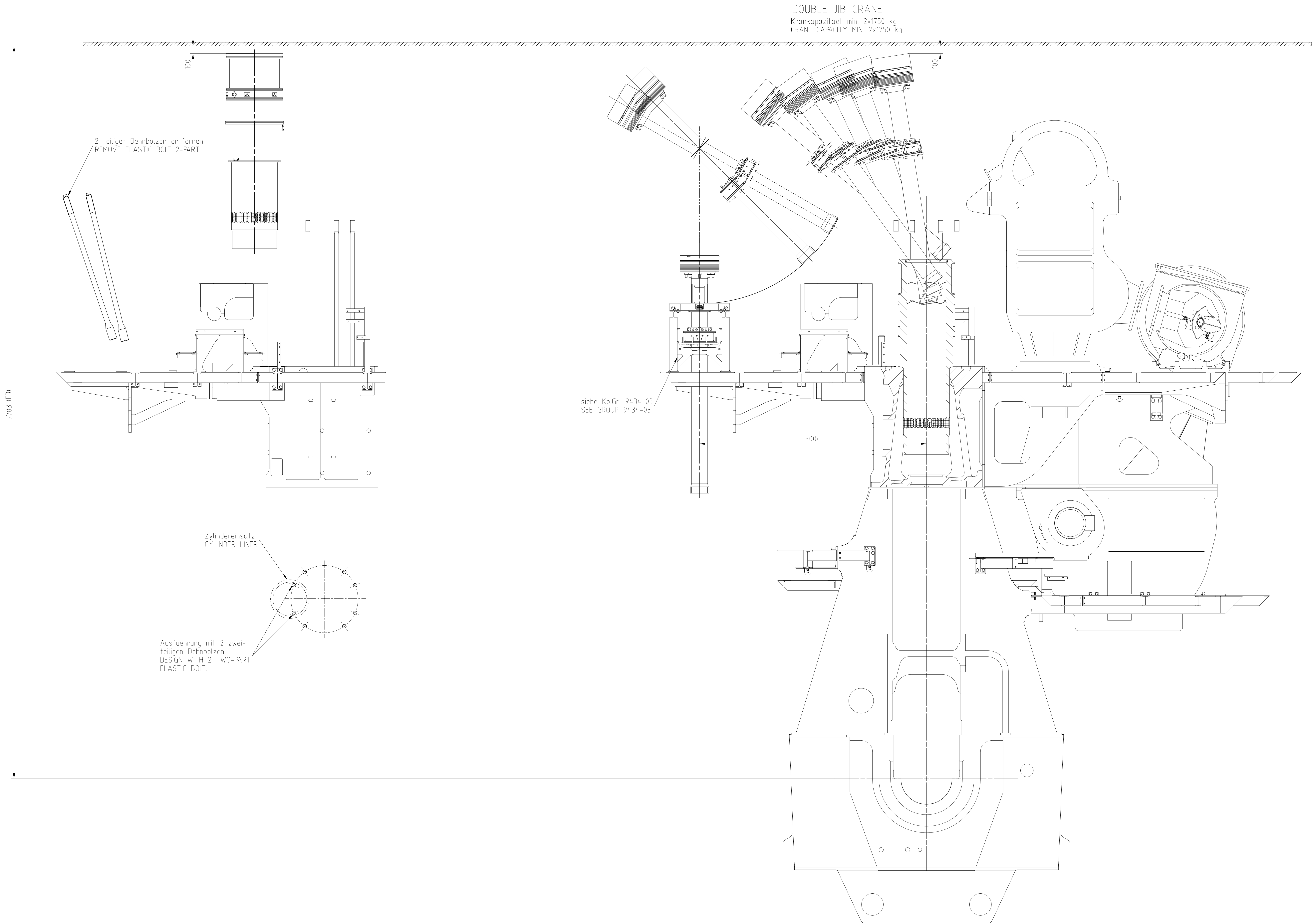
STANDARD DISMANTLING WITH DOUBLE-JIB CRANE

MIN. HEIGHT FOR VERTICAL REMOVAL WITH DOUBLE-JIB CRANE: F2

DISTANCE BETWEEN TOP POSITION OF HOOK AND ENGINE ROOM CEILING VARIES DEPENDING ON CRANE TYPE.

FOR TILTED REMOVAL WITH DOUBLE JIB E/R CRANE BY FUCHS FOERDERTECHNIK AG

SURFACE PROTECTION SEE GROUP 0304				Scale: 1:20				Size: A0				Page: 2/3				Material: PAAD336676			
TOLERANCING PRINCIPLE ISO8015				Design Group: 0812				Drawing: DAAD120355				Rev: -							
GENERAL TOLERANCES ACCORDING TO ISO2768-mK				Date: 25.09.2019				Drawn by: rws101				Checked by: whs101							



Voraussetzungen fuer diese Ausbautart

- zweiteilige Zylinderdeckel-Dehnbolzen auf der Brennstoffpumpenseite
- zweiteilige Zuganker im Reparaturfall
- Spezialkran (DOUBLE-JIB)
- spezielle Hebewerkzeuge fuer den Zylindereinsatz und den Kolben
- damit der Zylindereinsatz ausgebaut werden kann, muessen die benachbarten Zylinderdeckel demoniert werden.

REQUIREMENTS FOR THIS DISMANTLING METHOD

- TWO-PIECE ELASTIC STUDS FOR CYLINDER COVER ON FUEL PUMP SIDE
- TWO-PART TIE ROD IN CASE OF REPAIR
- SPECIAL CRANE (DOUBLE-JIB)
- SPECIAL LIFTING TOOLS FOR CYLINDER LINER AND PISTON
- FOR CYLINDER LINER DISMANTLING THE NEIGHBOURING CYLINDER COVERS NEED TO BE REMOVED, TOO

STANDARD DISMANTLING
WITH DOUBLE-JIB CRANE

MIN. HEIGHT FOR VERTICAL REMOVAL WITH DOUBLE-JIB CRANE: F3
DISTANCE BETWEEN TOP POSITION OF
HOOK AND ENGINE ROOM CEILING VARIES
DEPENDING ON CRANE TYPE.

FOR TILTED REMOVAL WITH DOUBLE JIB E/R CRANE
BY FUCHS FOERDERTECHNIK AG

Free space		Project CX52				B-Code XXXXXX Standard ISO		Plan Drawn	
Weight	Number	Drawn date	Number	Drawn date	Number	Drawn date	Number	Drawn date	
WIN GD Winthor Gas & Diesel		DISMANTLING DIMENSIONS		Ausbaumasse					
Units	mm kg	NX	Basic Material		Net Weight 0.001				
Drawn	11.09.2019	1ch101 Chen	Scale	1:20	Size	A0	Page	3/3	
Checked	25.09.2019	zwei101 Wang	Design Group		Material		PAAD336676		
Approved	30.09.2019	wher101 He	0812		Drawing	DAAD120355		Rev.	-
SURFACE PROTECTION SEE GROUP 0344									
TOLERANCING PRINCIPLE ISO8015									
GENERAL TOLERANCES ACCORDING TO ISO2768-mK									

WinGD – CX52_Engine Outline View

TRACK CHANGES

DATE	SUBJECT	DESCRIPTION
2021-06-07	DRAWING SET	First web upload

DISCLAIMER

© Copyright by Winterthur Gas & Diesel Ltd.

All rights reserved. No part of this document may be reproduced or copied in any form or by any means (electronic, mechanical, graphic, photocopying, recording, taping or other information retrieval systems) without the prior written permission of the copyright owner.

THIS PUBLICATION IS DESIGNED TO PROVIDE AN ACCURATE AND AUTHORITATIVE INFORMATION WITH REGARD TO THE SUBJECT-MATTER COVERED AS WAS AVAILABLE AT THE TIME OF PRINTING. HOWEVER, THE PUBLICATION DEALS WITH COMPLICATED TECHNICAL MATTERS SUITED ONLY FOR SPECIALISTS IN THE AREA, AND THE DESIGN OF THE SUBJECT-PRODUCTS IS SUBJECT TO REGULAR IMPROVEMENTS, MODIFICATIONS AND CHANGES. CONSEQUENTLY, THE PUBLISHER AND COPYRIGHT OWNER OF THIS PUBLICATION CAN NOT ACCEPT ANY RESPONSIBILITY OR LIABILITY FOR ANY EVENTUAL ERRORS OR OMISSIONS IN THIS BOOKLET OR FOR DISCREPANCIES ARISING FROM THE FEATURES OF ANY ACTUAL ITEM IN THE RESPECTIVE PRODUCT BEING DIFFERENT FROM THOSE SHOWN IN THIS PUBLICATION. THE PUBLISHER AND COPYRIGHT OWNER SHALL UNDER NO CIRCUMSTANCES BE HELD LIABLE FOR ANY FINANCIAL CONSEQUENTIAL DAMAGES OR OTHER LOSS, OR ANY OTHER DAMAGE OR INJURY, SUFFERED BY ANY PARTY MAKING USE OF THIS PUBLICATION OR THE INFORMATION CONTAINED HEREIN.