

DISMANTLING OF MAIN ENGINE COMPONENTS

F1 VERTICAL REMOVAL WITH A STANDARD CRANE

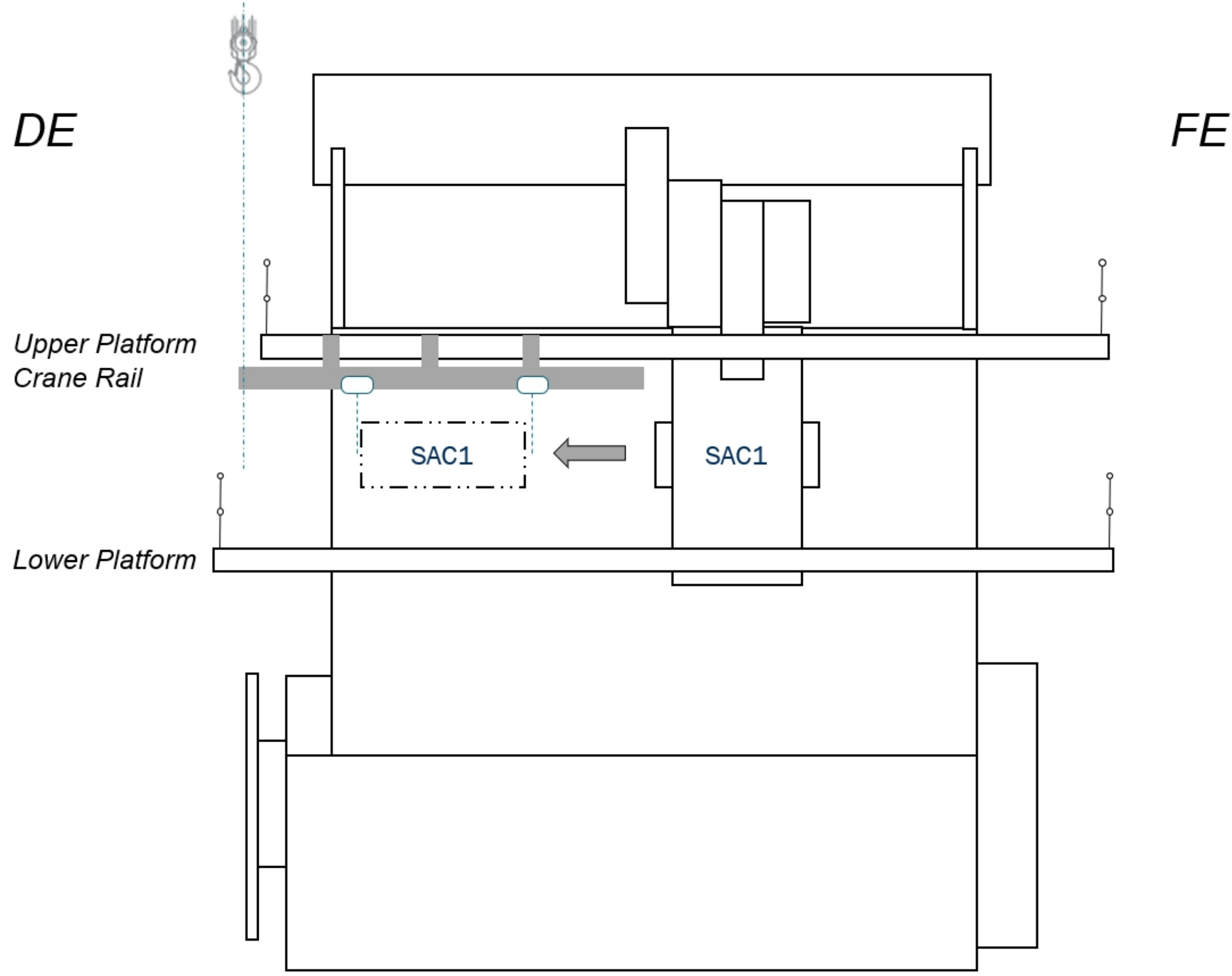
F2 VERTICAL REMOVAL WITH A DOUBLE JIB CRANE: SEE PARTS LIST
F3 TILTED REMOVAL WITH A DOUBLE JIB CRANE: SEE PARTS LIST

COMPATIBILITY NOTE FOR CRANE HOOK

THE LIFTING TOOLS FOR THIS ENGINE
ARE COMPATIBLE WITH FOLLOWING
CRANE HOOK:
DIN 15401: SHAPE RSN, HOOK NUMBER 08 TO 1.6 (A)

DISMANTLING ON EXHAUST SIDE

THE DISMANTLING PRINCIPLE OF SCAVENGE AIR COOLER (SAC),
WATER SEPARATOR AND AUXILIARY BLOWERS IS DEPENDING ON
THE ENGINE CONFIGURATION AND IS DESCRIBED IN THE
PLATFORM SPECIFICATION OF DG 7602.

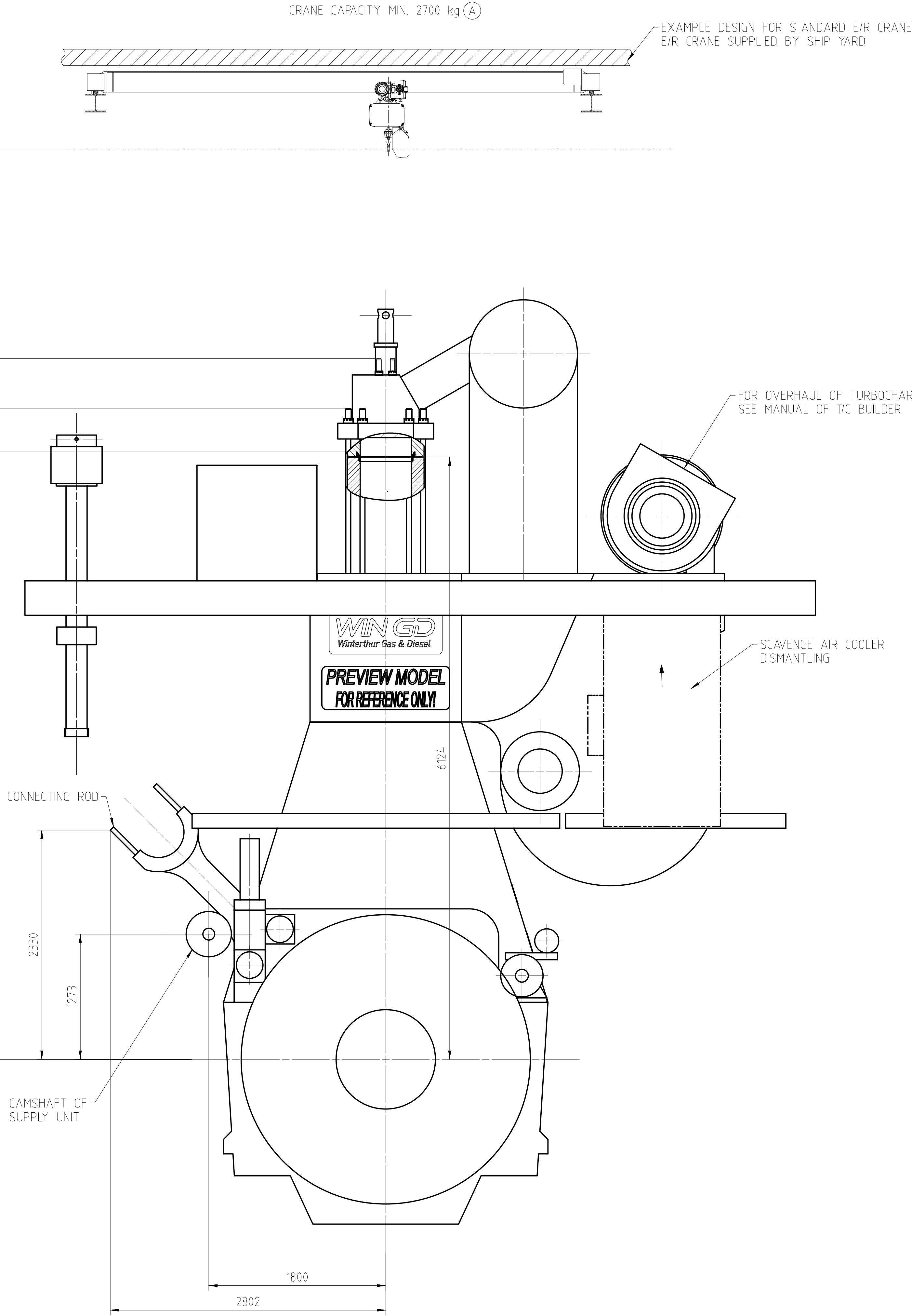
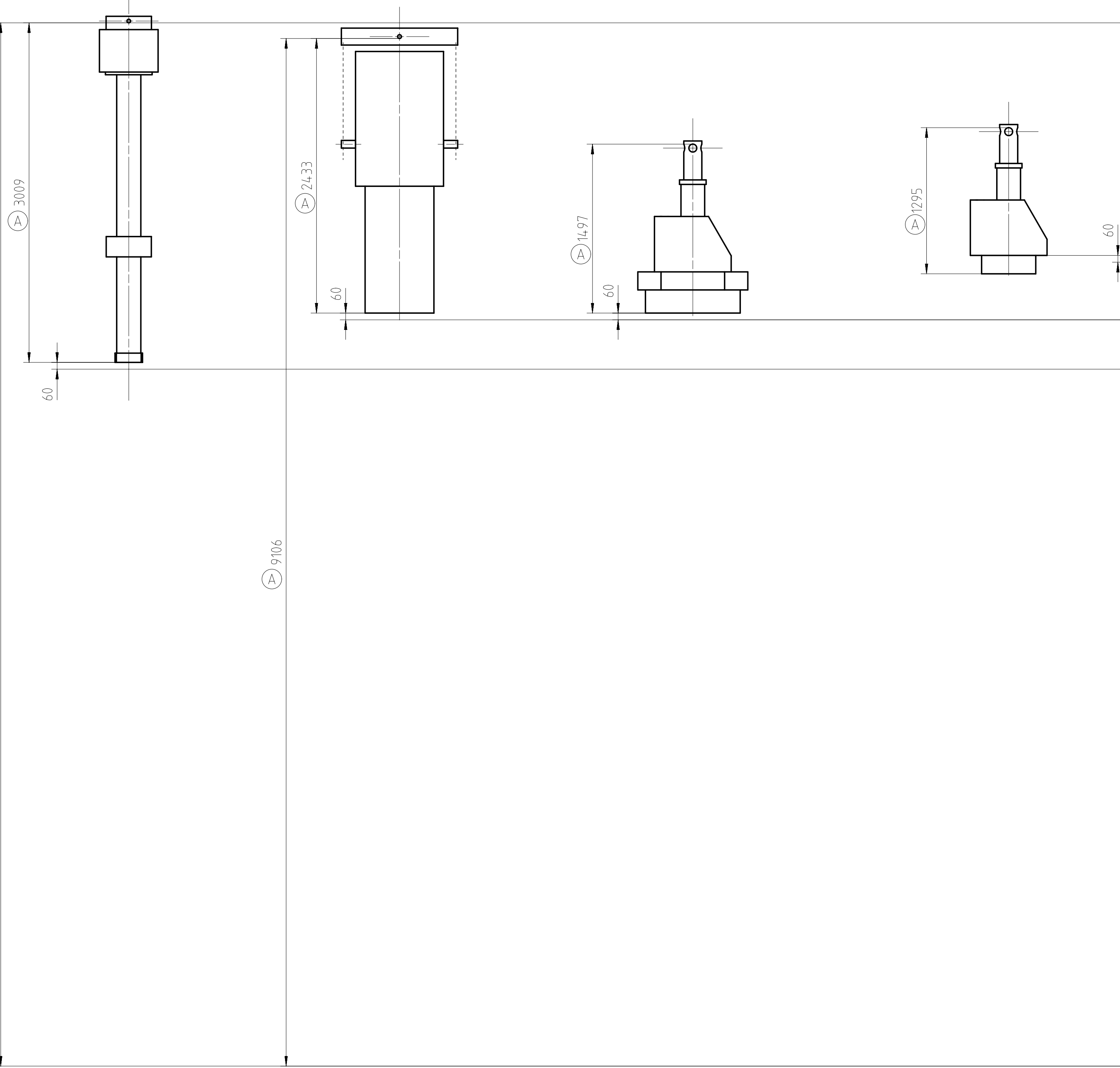


PISTON WITH ROD COMPLETE
AND GLAND BOX
MASS WITHOUT LIFTING TOOL:
1150 kg

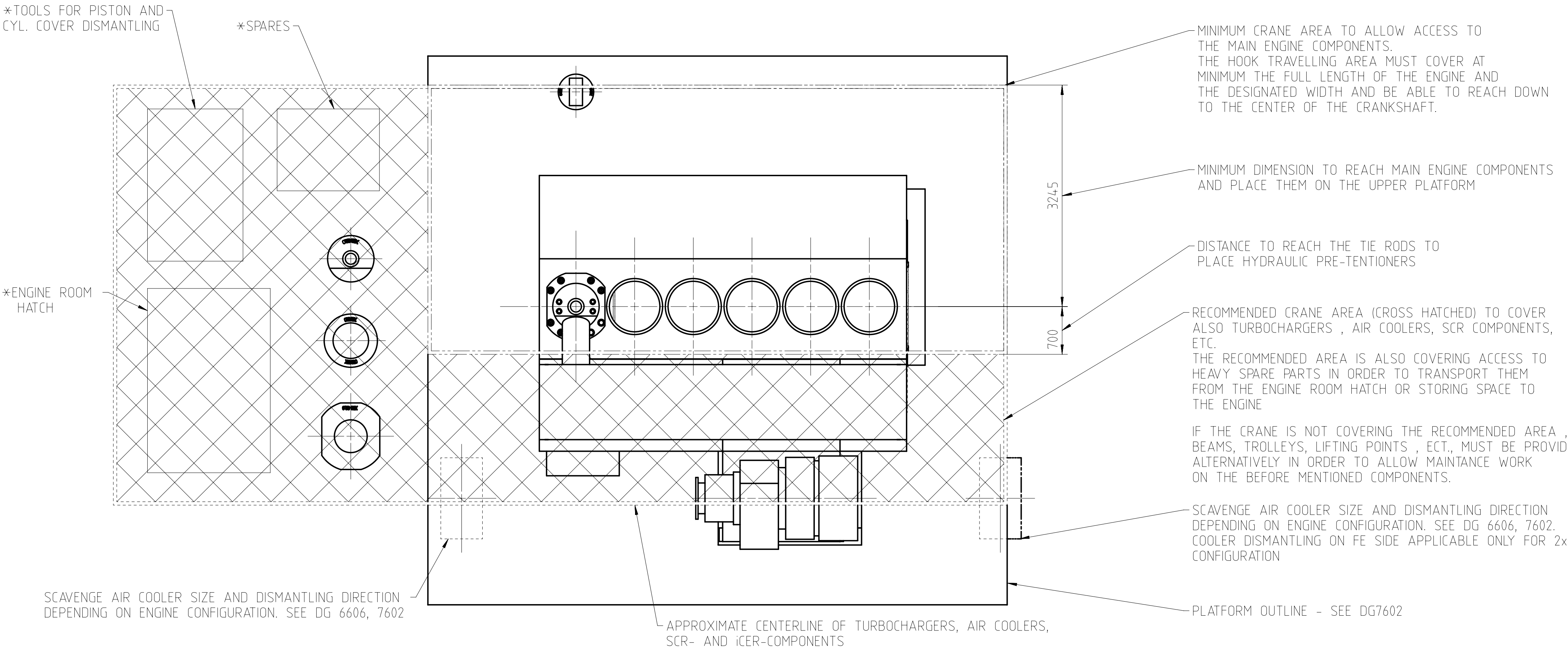
CYLINDER LINER WITH WATER GUIDE JACKET
MASS WITHOUT LIFTING TOOL:
2250 kg (A)

CYLINDER COVER WITH EXHAUST VALVE
COMPLETE AND WATER GUIDE JACKET
MASS:
1750 kg (A)

EXHAUST VALVE COMPLETE
MASS:
550 kg



CRANE AREA



*THE SHOWN PLACEMENT FOR TOOLS, SPARES
AND ENGINE ROOM HATCH ARE FOR GUIDANCE ONLY

MINIMUM CRANE AREA TO ALLOW ACCESS TO
THE MAIN ENGINE COMPONENTS.
THE HOOK TRAVELLING AREA MUST COVER AT
MINIMUM THE FULL LENGTH OF THE ENGINE AND
THE DESIGNATED WIDTH AND BE ABLE TO REACH DOWN
TO THE CENTER OF THE CRANKSHAFT.

MINIMUM DIMENSION TO REACH MAIN ENGINE COMPONENTS
AND PLACE THEM ON THE UPPER PLATFORM

DISTANCE TO REACH THE TIE RODS TO
PLACE HYDRAULIC PRE-TENTIONERS

RECOMMENDED CRANE AREA (CROSS HATCHED) TO COVER
ALSO TURBOCHARGERS, AIR COOLERS, SCR COMPONENTS,
ETC.
THE RECOMMENDED AREA IS ALSO COVERING ACCESS TO
HEAVY SPARE PARTS IN ORDER TO TRANSPORT THEM
FROM THE ENGINE ROOM HATCH OR STORING SPACE TO
THE ENGINE

IF THE CRANE IS NOT COVERING THE RECOMMENDED AREA,
BEAMS, TROLLEYS, LIFTING POINTS, ETC., MUST BE PROVIDED
ALTERNATIVELY IN ORDER TO ALLOW MAINTANCE WORK
ON THE BEFORE MENTIONED COMPONENTS.

SCAVENGE AIR COOLER SIZE AND DISMANTLING DIRECTION
DEPENDING ON ENGINE CONFIGURATION. SEE DG 6606, 7602.
COOLER DISMANTLING ON FE SIDE APPLICABLE ONLY FOR 2x T/C
CONFIGURATION

PLATFORM OUTLINE - SEE DG7602

APPROXIMATE CENTERLINE OF TURBOCHARGERS, AIR COOLERS,
SCR- AND ICER-COMPONENTS

STANDARD DISMANTLING F1

DRAWN FOR : 6X52-S2.0
TCLOCATION : ES

DISCLAIMER:
THE DATA PROVIDED ON THIS DISMANTLING DIMENSIONS
DRAWING ARE SUBJECT TO TOLERANCES AND POSSIBLE
DESIGN MODIFICATIONS AND ARE FOR ORIENTATION ONLY.
IN CASE OF A VERY LIMITED E/R SPACE SITUATION
PLEASE CONSIDER MANUFACTURING DRAWINGS OR
GET IN CONTACT WITH WINGD.

5.6.7.8X52-S2.0									
Prod									
Change History									
A	201801	fta015	29.11.2023	CNAA004787	Drawing update			4	3
-	bzh102	mda006	11.10.2023	CNAA004616	New MainDesign introduced for X52-S2.0			-	-
Rev.	Creator	Approver	Approval Date	Change ID	Change Synopsis	Approved	Activity Code	E	C
WINGD Winterthur Gas & Diesel									
DISMANTLING DIMENSIONS									
Scale 1:4.0 1=1m NX									
Copyright Winterthur Gas & Diesel Ltd. All rights reserved. All rights reserved. If the drawing is to be used for manufacturing and/or for other purposes, the user must obtain the necessary permission from Winterthur Gas & Diesel Ltd. in writing. No part of this drawing may be reproduced or transmitted in any form or by any means electronic, mechanical, photocopying, recording, or otherwise, without prior written consent of Winterthur Gas & Diesel Ltd.									
Dimension		Units [mm]	[kg]	Basic Material		Net Weight		0.001	
Main Design		Yes	Design Group	0816-02		Q-Code X X 0		Standard WDS	
Qty per		Engine	A0	Item ID		PTAA078326		Drawing Pages 1/1	